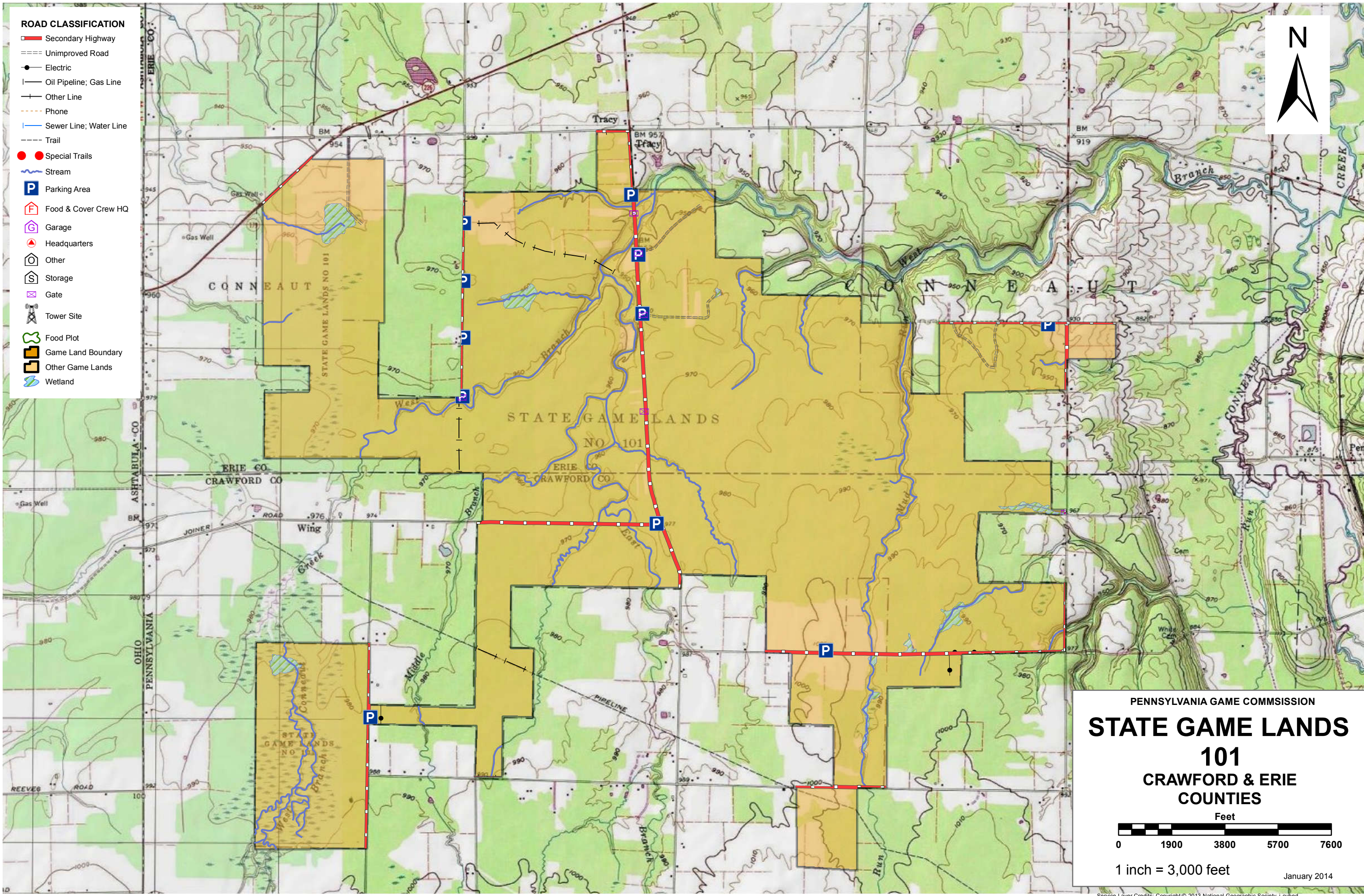
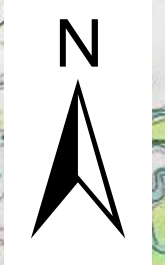


- ROAD CLASSIFICATION**
- Secondary Highway
 - Unimproved Road
 - Electric
 - Oil Pipeline; Gas Line
 - Other Line
 - Phone
 - Sewer Line; Water Line
 - Trail
 - Special Trails
 - Stream
 - Parking Area
 - Food & Cover Crew HQ
 - Garage
 - Headquarters
 - Other
 - Storage
 - Gate
 - Tower Site
 - Food Plot
 - Game Land Boundary
 - Other Game Lands
 - Wetland



PENNSYLVANIA GAME COMMISSION

STATE GAME LANDS

101

CRAWFORD & ERIE COUNTIES

Feet

1 inch = 3,000 feet

January 2014

Service Layer Credits: Copyright© 2013 National Geographic Society, i-cubed



SPORTSMEN'S RECREATION MAP



STATE GAME LANDS No. 101 CRAWFORD & ERIE COUNTIES

Each time a hunter buys a hunting license, the money he spends goes toward many facets of wildlife management. Since 1920, close to a million and a half acres of State Game Lands have been acquired with these funds. Each year nearly \$7,000,000 is spent to improve wildlife habitat. Habitat improvements enhance living conditions for non-game birds and mammals as well as those species which are hunted. Pennsylvania hunters willingly share these lands with the non-hunting public, and with few exceptions, State Game Lands are open for general use year round. Surveys indicate that hunting accounts for only thirty-five percent of game land usage. The remaining sixty-five percent is used by the general public for non-hunting purposes.

“Working Together for Wildlife” is a Game Commission program providing everyone an opportunity to help support wildlife management in the areas for endangered and non-game animals. Monies derived from the “Working Together for Wildlife” Program are being used in Pennsylvania to re-introduce the osprey, river otter, bald eagle, peregrine falcon and provide habitat for other birds and mammals indigenous to the Commonwealth. Construction placement of blue bird houses on State Game Lands provides needed homes for this beautiful songbird. Islands in the Susquehanna River have been set aside as propagations areas for non-game shore birds. Numerous other projects are planned on State Game Lands and other public properties which will also provide food and habitat for non-game wildlife.

The future of Pennsylvania’s wildlife resources requires the concern, cooperation and financial support of everyone, hunters and non-hunters alike. “Working Together for Wildlife” is the answer. Send your contributions to “Working Together for Wildlife”, 2001 Elmerton Avenue, Harrisburg, Pennsylvania 17110-9797.

COMMONWEALTH OF PENNSYLVANIA
PENNSYLVANIA GAME COMMISSION

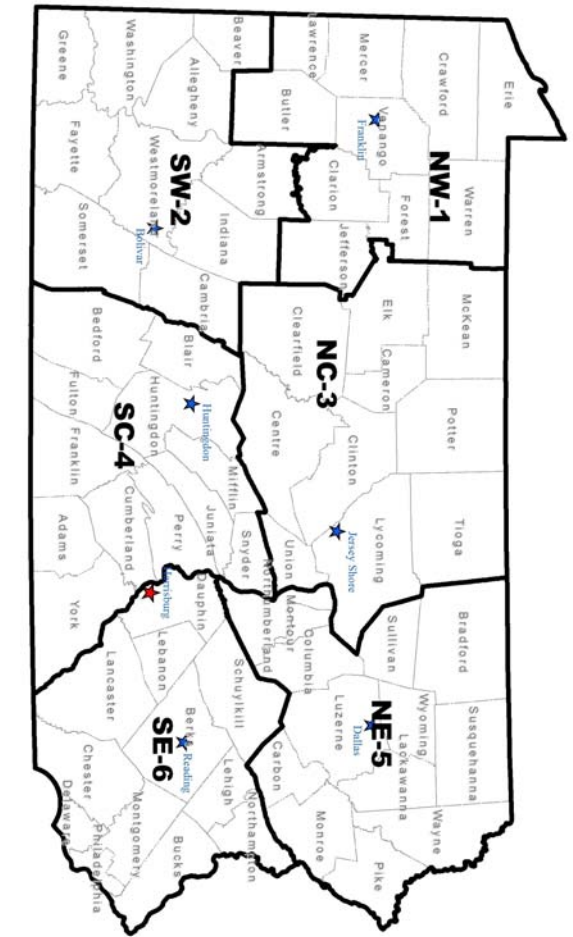
State Game Land 101 lies in three tracts (one large and two smaller tracts) consisting of a total 5056.7 acres within the Pennsylvania Game Commission's (PGC) Northwest Region, Wildlife Management Unit 1B. It is located adjacent to the Ohio state line and straddles the Crawford and Erie County line. It is Approximately 4 miles southwest of Albion and 25 miles southwest of Erie.

The main access artery runs north to south through the game land – called Beaver Center Road in Crawford County (SR 4001) and Griffey Road in Erie County (SR 3001). Other roads giving access to SGL 101 include Tracy Road (T-341), Joiner Road (T-883), Jerusalem Road (T-885), Philadelphia Road (T-867), and SR 226

This game land was purchased in 24 parcels between 1934 and 1996 for \$352,301.69, of which \$5017.819 came from Pittman-Robertson funds. The Game Land is overall generally lacking in major topography, having less than 75 feet of elevation difference in its greater than 5000 acres. It falls within the Lake Erie drainage, primarily with the upper reaches of Conneaut Creek. These streams have characteristic shale bottoms and vary greatly in flow, based mainly upon precipitation. Soils are very poorly to poorly drained and heavy, resulting in the area being generally wet through much of the year.

Much of the Game Land was historically either in agriculture or pasture, resulting in a current relatively early successional forest with a large shrub component. Commercial timber activities in the past have proven difficult because of the water regime, and have been utilized quite sparingly in the recent past. In an attempt to maintain early succession, shrub and aspen habitat, a program of mainly non-commercial rotational cutting has been in place since 1976.

SGL 101 receives moderate to heavy hunting pressure. Due to its proximity to Ohio, it receives many non-resident hunters. Deer, woodcock, turkey and pheasant, are the most popular game. Pheasants are stocked on Jerusalem Hill Road, and both residents and non-residents utilize them heavily because pheasants are not stocked in Ohio. Furtakers actively pursue beavers in particular, and to a lesser extent, coyotes, muskrat, mink, fox and raccoons. There are no legal snowmobile trails, designated routes, or handicapped ATV trails on this game land.



| | | |
|---|---|------------------------------|
| 6 | SOUTHEAST REGIONAL HEADQUARTERS 253 SNYDER RD., READING, PA 19605 | 610-926-3136 610-926-3137 |
| 5 | NORTHEAST REGIONAL HEADQUARTERS 3917 MEMORIAL HWY, DALLAS, PA 18612 | 570-675-1143 570-675-1144 |
| 4 | SOUTHCENTRAL REGIONAL HEADQUARTERS 8627 WILLIAM PENN HWY, HUNTINGDON, PA 16652 | 814-643-1831 814-643-1835 |
| 3 | NORTHCENTRAL REGIONAL HEADQUARTERS 1566 S ROUTE 44 HWY, JERSEY SHORE, PA 17740 | 570-398-4744 570-398-4745 |
| 2 | SOUTHWEST REGIONAL HEADQUARTERS 4820 ROUTE 711, BOULCAR, PA 15923 | 724-238-9523 724-238-9524 |
| 1 | NORTHWEST REGIONAL HEADQUARTERS 1509 PITTSBURG RD, FRANKLIN, PA 16323 | 814-432-3187 814-432-3188 |

FOR FURTHER INFORMATION
CONTACT THE FOLLOWING: