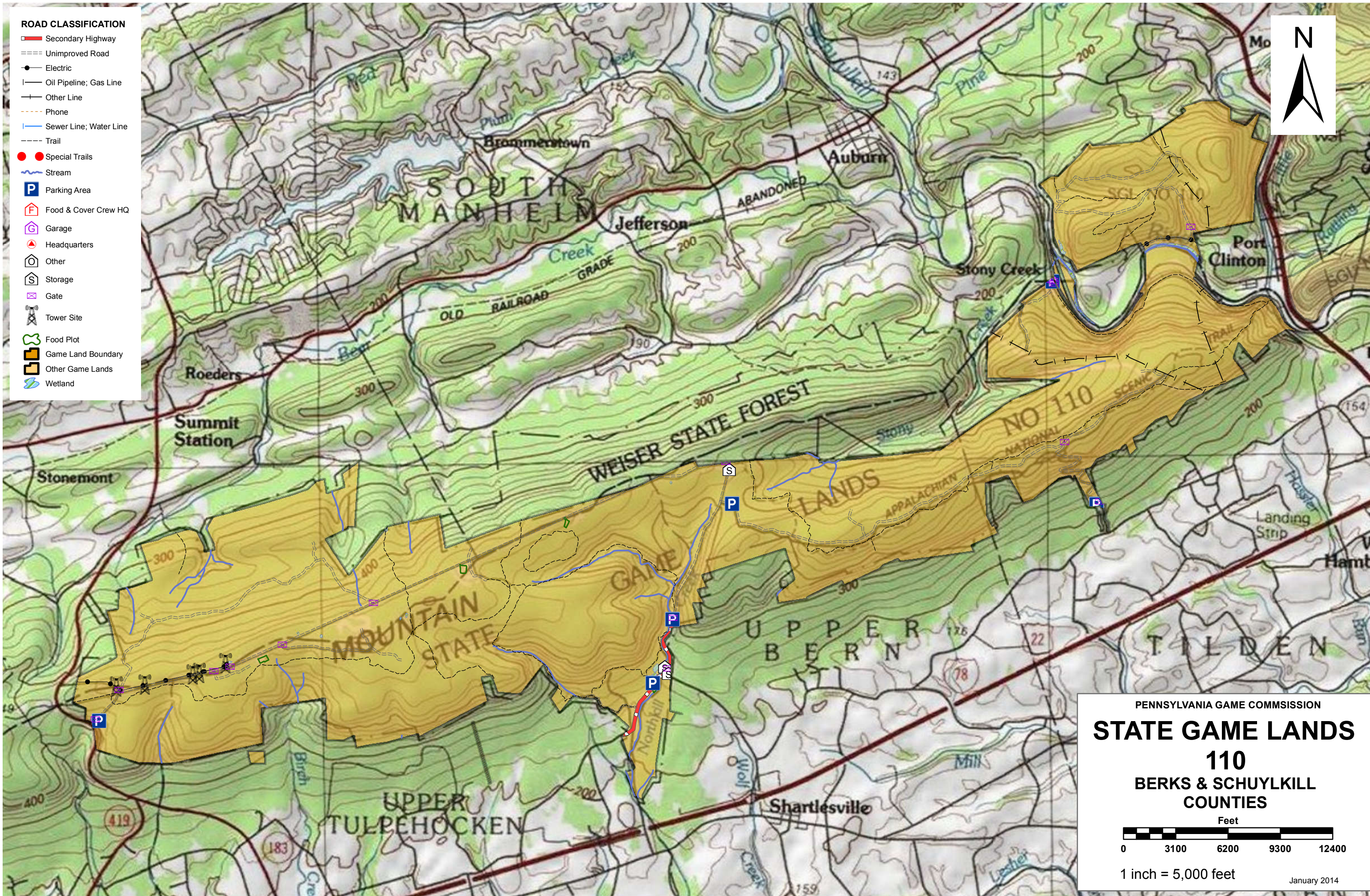


**ROAD CLASSIFICATION**

- Secondary Highway
- Unimproved Road
- Electric
- Oil Pipeline; Gas Line
- Other Line
- Phone
- Sewer Line; Water Line
- Trail
- Special Trails
- Stream
- Parking Area
- Food & Cover Crew HQ
- Garage
- Headquarters
- Other
- Storage
- Gate
- Tower Site
- Food Plot
- Game Land Boundary
- Other Game Lands
- Wetland



PENNSYLVANIA GAME COMMISSION

# STATE GAME LANDS 110

BERKS & SCHUYLKILL COUNTIES

Feet

0 3100 6200 9300 12400

1 inch = 5,000 feet

January 2014

Service Layer Credits: Copyright © 2013 National Geographic Society, I-cubed



# SPORTSMEN'S RECREATION MAP



## STATE GAME LANDS No. 110 BERKS & SCHUYLKILL COUNTIES

Each time a hunter buys a hunting license, the money he spends goes toward many facets of wildlife management. Since 1920, close to a million and a half acres of State Game Lands have been acquired with these funds. Each year nearly \$7,000,000 is spent to improve wildlife habitat. Habitat improvements enhance living conditions for non-game birds and mammals as well as those species which are hunted. Pennsylvania hunters willingly share these lands with the non-hunting public, and with few exceptions, State Game Lands are open for general use year round. Surveys indicate that hunting accounts for only thirty-five percent of game land usage. The remaining sixty-five percent is used by the general public for non-hunting purposes.

“Working Together for Wildlife” is a Game Commission program providing everyone an opportunity to help support wildlife management in the areas for endangered and non-game animals. Monies derived from the “Working Together for Wildlife” Program are being used in Pennsylvania to re-introduce the osprey, river otter, bald eagle, peregrine falcon and provide habitat for other birds and mammals indigenous to the Commonwealth. Construction placement of blue bird houses on State Game Lands provides needed homes for this beautiful songbird. Islands in the Susquehanna River have been set aside as propagations areas for non-game shore birds. Numerous other projects are planned on State Game Lands and other public properties which will also provide food and habitat for non-game wildlife.

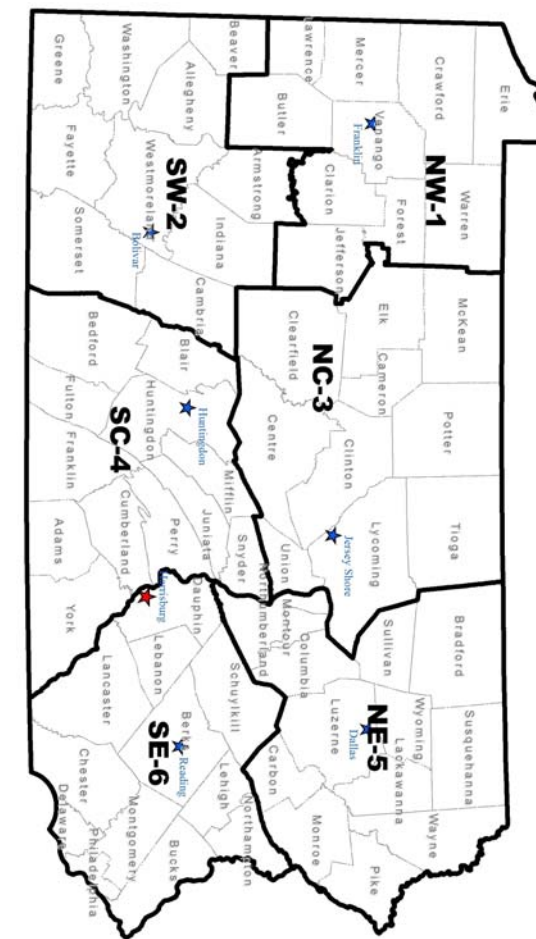
The future of Pennsylvania’s wildlife resources requires the concern, cooperation and financial support of everyone, hunters and non-hunters alike. “Working Together for Wildlife” is the answer. Send your contributions to “Working Together for Wildlife”, 2001 Elmerton Avenue, Harrisburg, Pennsylvania 17110-9797.

State Game Land (SGL) 110, which totals 10,130 acres, is located along the Blue Mountain range in Berks County (Bethel, Upper Bern, Upper Tulpehocken, and Tilden townships), and Schuylkill County (Wayne and West Brunswick Townships). The property is located in the Pennsylvania Game Commission’s Southeast Region and lies entirely within Wildlife Management Unit 4C. SGL 110 is located approximately 18 miles north of Reading.

Access to the game lands is obtained on the western end by State Route 183. Northkill Creek Road, running north from Shartlesville, and Mountain Road, running parallel to U.S. Route 78 and 22, provide access to the southern portion. Access to the eastern end is gained by following Broad Street west from Port Clinton and State Route 61. In Schuylkill County from Route 61 and Rolling Mill road travel west to Fork Mountain Road, which the township vacated in 2013 travel south to parking area. Bear Creek Road from Auburn and Bear Creek Road from Summit Station provide access from the north. Parking lots are located adjacent to the major access points. Internal service roads emanate from most parking areas and provide access to much of the game lands. The Appalachian Trail is located on the top of the Blue Mountain and runs the length of the game lands from State Route 183 to Port Clinton.

Both big game and small game are hunted on SGL 110. Deer, black bear, turkey, grouse, rabbits and squirrels are found here. Ducks and geese are occasionally hunted along the Schuylkill River corridor. Coyotes, foxes, opossums and raccoons are actively trapped on the game lands. There are also opportunities for muskrat and mink trapping along Schuylkill River and some of its small tributaries.

Public utilization of this game lands is very extensive. Sport hunting for game species is not the only major activity. Intensive public activity can be found year round. Fishing in the Schuylkill River and the properties numerous small streams, observation of raptures, fall foliage tours, and heavy usage of the Appalachian Trail corridor are examples of nonconsumptive uses of the game lands. Winter season enables the public to take advantage of the snowmobile trail system.



- |   |   |                              |
|---|---|------------------------------|
| 6 | SOUTHEAST REGIONAL HEADQUARTERS<br>253 SNYDER RD., READING, PA 19605              | 610-926-3136<br>610-926-3137 |
| 5 | NORTHEAST REGIONAL HEADQUARTERS<br>3917 MEMORIAL HWY, DALLAS, PA 18612            | 570-675-1143<br>570-675-1144 |
| 4 | 8627 WILLIAM PENN HWY, HUNTINGDON, PA 16652                                       | 814-643-1835                 |
| 3 | SOUTHCENTRAL REGIONAL HEADQUARTERS<br>1566 S ROUTE 44 HWY, JERSEY SHORE, PA 17740 | 814-643-1831<br>814-643-1835 |
| 2 | NORTHWEST REGIONAL HEADQUARTERS<br>4820 ROUTE 711, BOULCAR, PA 15923              | 724-238-9524<br>724-238-9523 |
| 1 | SOUTHWEST REGIONAL HEADQUARTERS<br>1509 PITTSBURG RD, FRANKLIN, PA 16323          | 814-432-3187<br>814-432-3188 |

FOR FURTHER INFORMATION  
CONTACT THE FOLLOWING:

COMMONWEALTH OF PENNSYLVANIA  
PENNSYLVANIA GAME COMMISSION