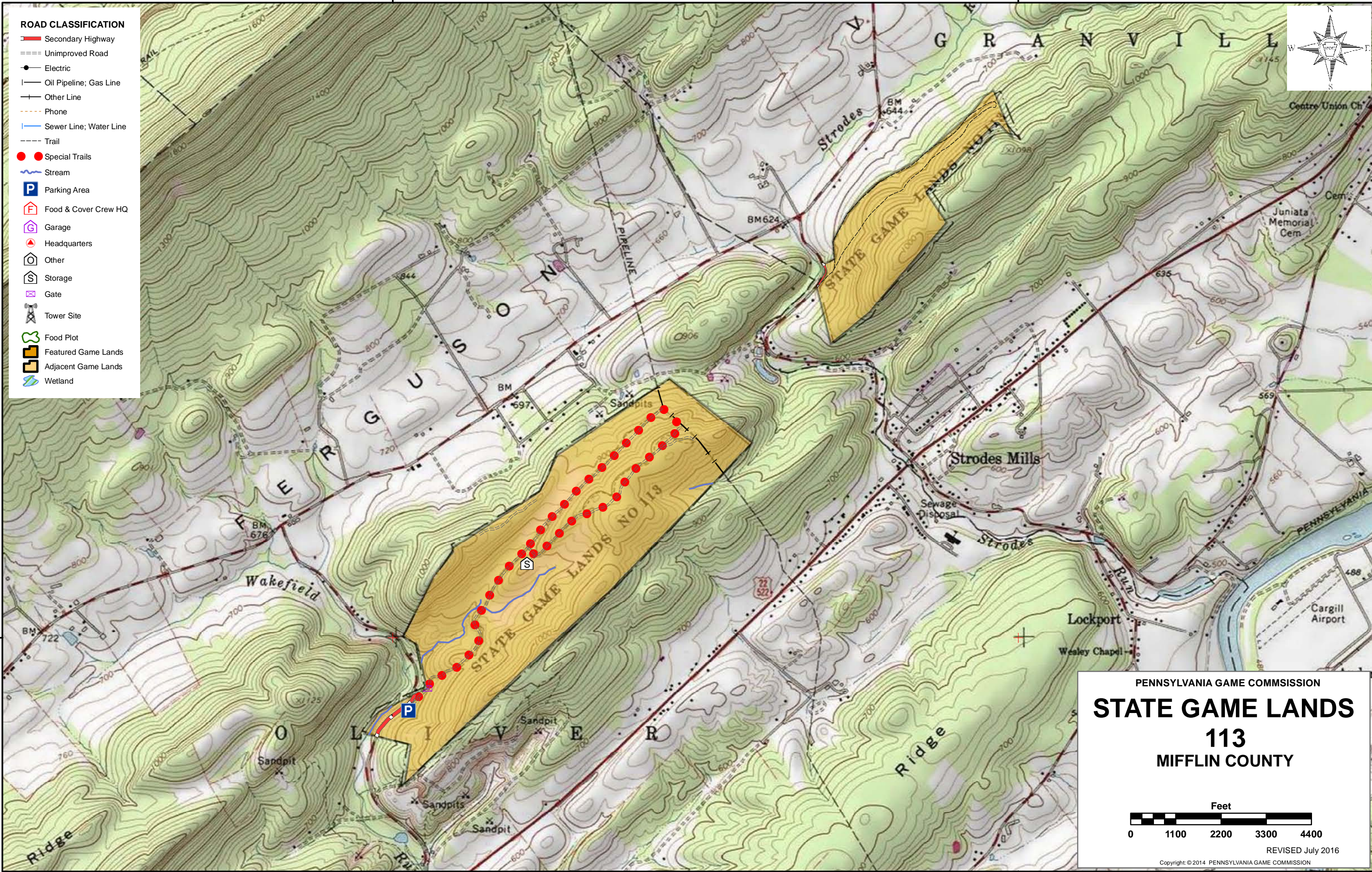
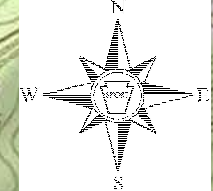


77°42'30"W

77°40'0"W



- ROAD CLASSIFICATION**
- Secondary Highway
 - Unimproved Road
 - Electric
 - Oil Pipeline; Gas Line
 - Other Line
 - Phone
 - Sewer Line; Water Line
 - Trail
 - Special Trails
 - Stream
 - Parking Area
 - Food & Cover Crew HQ
 - Garage
 - Headquarters
 - Other
 - Storage
 - Gate
 - Tower Site
 - Food Plot
 - Featured Game Lands
 - Adjacent Game Lands
 - Wetland



PENNSYLVANIA GAME COMMISSION

STATE GAME LANDS

113

MIFFLIN COUNTY

Feet

0 1100 2200 3300 4400

REVISED July 2016
Copyright © 2014 PENNSYLVANIA GAME COMMISSION

40°32'30"N

40°32'30"N

77°42'30"W

77°40'0"W

SPORTSMEN'S RECREATION MAP



STATE GAME LANDS No. 113 MIFFLIN COUNTY

Each time a hunter buys a hunting license, the money he spends goes toward many facets of wildlife management. Since 1920, close to a million and a half acres of State Game Lands have been acquired with these funds. Each year nearly \$7,000,000 is spent to improve wildlife habitat. Habitat improvements enhance living conditions for non-game birds and mammals as well as those species which are hunted. Pennsylvania hunters willingly share these lands with the non-hunting public, and with few exceptions, State Game Lands are open for general use year round. Surveys indicate that hunting accounts for only thirty-five percent of game land usage. The remaining sixty-five percent is used by the general public for non-hunting purposes.

“Working Together for Wildlife” is a Game Commission program providing everyone an opportunity to help support wildlife management in the areas for endangered and non-game animals. Monies derived from the “Working Together for Wildlife” Program are being used in Pennsylvania to re-introduce the osprey, river otter, bald eagle, peregrine falcon and provide habitat for other birds and mammals indigenous to the Commonwealth. Construction placement of blue bird houses on State Game Lands provides needed homes for this beautiful songbird. Islands in the Susquehanna River have been set aside as propagations areas for non-game shore birds. Numerous other projects are planned on State Game Lands and other public properties which will also provide food and habitat for non-game wildlife.

The future of Pennsylvania’s wildlife resources requires the concern, cooperation and financial support of everyone, hunters and non-hunters alike. “Working Together for Wildlife” is the answer. Send your contributions to “Working Together for Wildlife”, 2001 Elmerton Avenue, Harrisburg, Pennsylvania 17110-9797.

State Game Lands (SGL) 113 consists of 523 acres in two separate tracts in Oliver and Granville townships, central Mifflin County near the village of Strodes Mills, approximately 5 miles southwest of Lewistown. For administrative purposes, the Game Lands will be managed as two compartments.

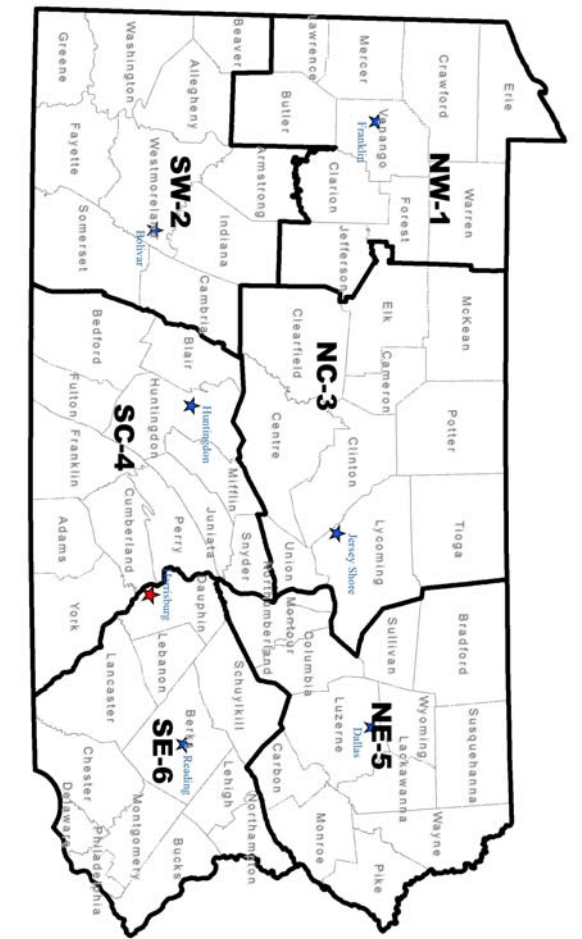
It lies on two ridges along the eastern edge of Ferguson Valley. The surrounding landscape is characterized by low to moderately high linear ridges and adjacent valleys and is a mixture of agricultural lands, forested ridges and woodlots, and developed areas. Elevations range from about 600 feet above mean sea level along Wakefield Run to 1,060 feet atop the ridge in compartment 2. SGL 113 is entirely contained within Wildlife Management Unit (WMU) 4D.

SGL 113 is dominated by deciduous forests with interspersed conifer stands, wetlands, shrublands, and herbaceous areas. Of the total Game Lands acreage, 93% (486 acres) is forested. The remaining acreage is comprised of open, managed herbaceous areas (27 acres), a utility right-of-way (4 acres), waterways (1 acre), and public-use roads (5 acres).

Access to SGL 113 is excellent. Access to the southern tract (compartment 1) is very good from U.S. Route 22/522 by using Wakefield Road (SR 3007), approximately 2.7 miles east of McVeytown, to the only developed parking lot located on this SGL. The northern tract (compartment 2) is located along Strodes Mills Road (TR 710). This road also connects to Route 22 at the village of Strodes Mills. PGC service roads provide pedestrian access to the interiors of both tracts.

SGL 113 hosts opportunities for hunting big game and some species of small game. Deer, bear, and turkey are found here as well as squirrel, some rabbits, and grouse. Ringneck pheasants are stocked for a popular put-and-take program, but few, if any, survive the seasons. Furbearers provide some hunting and trapping opportunity here due to the diverse habitat.

Non-consumptive wildlife recreation here is hiking, biking, bird-watching, and horseback riding. SGL 113 is popular among locals walking and enjoying the outdoors. One designated hiking, biking and equestrian route of approximately 2 miles starts and ends at the public parking lot located in compartment 1 along Wakefield Road.



- 1 NORTHWEST REGIONAL HEADQUARTERS
1509 PITTSBURGH RD, FRANKLIN, PA 16323
- 2 SOUTHWEST REGIONAL HEADQUARTERS
4820 ROUTE 711, BOULCAR, PA 15923
- 3 NORTHCENTRAL REGIONAL HEADQUARTERS
1566 S ROUTE 44 HWY, JERSEY SHORE, PA 17740
- 4 SOUTHCENTRAL REGIONAL HEADQUARTERS
8627 WILLIAM PENN HWY, HUNTINGDON, PA 16652
- 5 NORTHEAST REGIONAL HEADQUARTERS
3917 MEMORIAL HWY, DALLAS, PA 18612
- 6 SOUTHEAST REGIONAL HEADQUARTERS
253 SNYDER RD, READING, PA 19605

FOR FURTHER INFORMATION
CONTACT THE FOLLOWING:

- 814-432-3187
- 814-432-3188
- 724-238-9523
- 724-238-9524
- 570-398-4744
- 570-398-4745
- 814-643-1831
- 814-643-1835
- 570-675-1143
- 570-675-1144
- 610-926-3136
- 610-926-3137

COMMONWEALTH OF PENNSYLVANIA
PENNSYLVANIA GAME COMMISSION