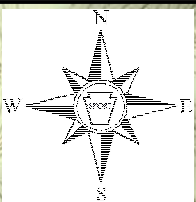


77°17'30"W 77°15'0"W 77°12'30"W 77°10'0"W 77°7'30"W



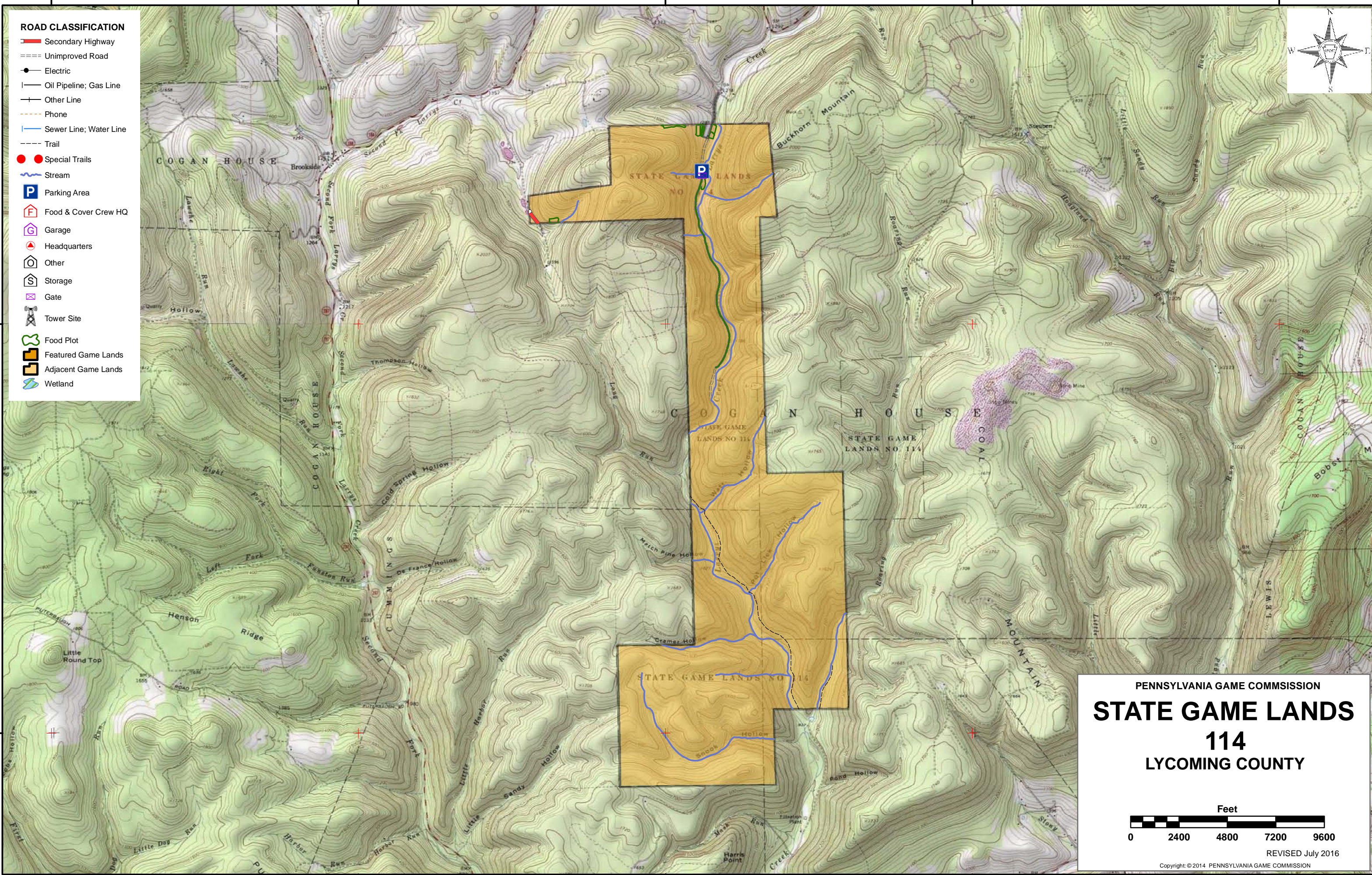
- ROAD CLASSIFICATION**
- Secondary Highway
  - Unimproved Road
  - Electric
  - Oil Pipeline; Gas Line
  - Other Line
  - Phone
  - Sewer Line; Water Line
  - Trail
  - Special Trails
  - Stream
  - Parking Area
  - Food & Cover Crew HQ
  - Garage
  - Headquarters
  - Other
  - Storage
  - Gate
  - Tower Site
  - Food Plot
  - Featured Game Lands
  - Adjacent Game Lands
  - Wetland

41°22'30"N

41°22'30"N

41°20'0"N

41°20'0"N



PENNSYLVANIA GAME COMMISSION

# STATE GAME LANDS

## 114

### LYCOMING COUNTY

Feet

0 2400 4800 7200 9600

REVISED July 2016

Copyright © 2014 PENNSYLVANIA GAME COMMISSION

77°17'30"W 77°15'0"W 77°12'30"W 77°10'0"W 77°7'30"W

# SPORTSMEN'S RECREATION MAP



## STATE GAME LANDS No. 114 LYCOMING COUNTY

Each time a hunter buys a hunting license, the money he spends goes toward many facets of wildlife management. Since 1920, close to a million and a half acres of State Game Lands have been acquired with these funds. Each year nearly \$7,000,000 is spent to improve wildlife habitat. Habitat improvements enhance living conditions for non-game birds and mammals as well as those species which are hunted. Pennsylvania hunters willingly share these lands with the non-hunting public, and with few exceptions, State Game Lands are open for general use year round. Surveys indicate that hunting accounts for only thirty-five percent of game land usage. The remaining sixty-five percent is used by the general public for non-hunting purposes.

“Working Together for Wildlife” is a Game Commission program providing everyone an opportunity to help support wildlife management in the areas for endangered and non-game animals. Monies derived from the “Working Together for Wildlife” Program are being used in Pennsylvania to re-introduce the osprey, river otter, bald eagle, peregrine falcon and provide habitat for other birds and mammals indigenous to the Commonwealth. Construction placement of blue bird houses on State Game Lands provides needed homes for this beautiful songbird. Islands in the Susquehanna River have been set aside as propagations areas for non-game shore birds. Numerous other projects are planned on State Game Lands and other public properties which will also provide food and habitat for non-game wildlife.

The future of Pennsylvania’s wildlife resources requires the concern, cooperation and financial support of everyone, hunters and non-hunters alike. “Working Together for Wildlife” is the answer. Send your contributions to “Working Together for Wildlife”, 2001 Elmerton Avenue, Harrisburg, Pennsylvania 17110-9797.

COMMONWEALTH OF PENNSYLVANIA  
PENNSYLVANIA GAME COMMISSION

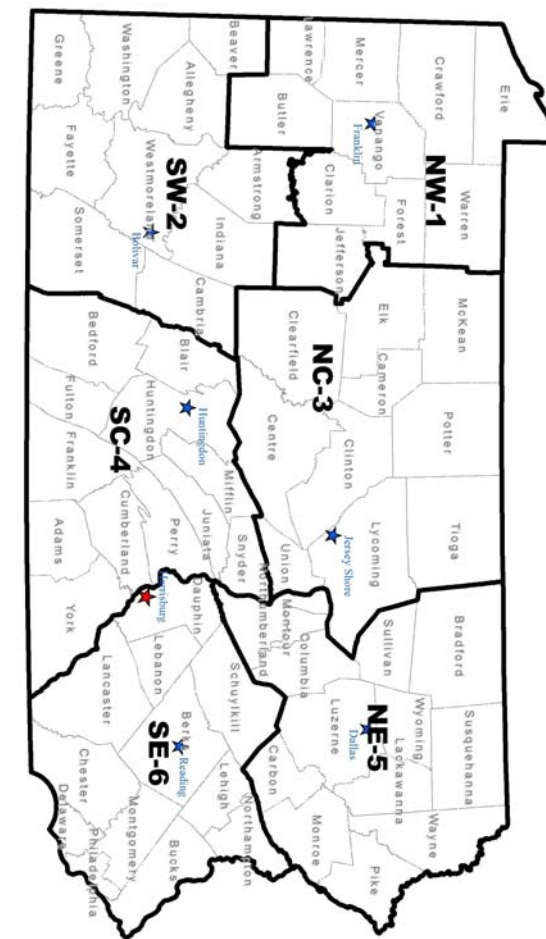
State Game Lands 114 (2,881.8 acres) is located in Lycoming County within the Pennsylvania Game Commission's Northcentral Region and Wildlife Management Unit 2G. The game lands is managed in two compartments and has very limited access due to being bordered by large private hunting clubs and a municipal water authority. Compartment 1 has the only public access off of Township Route 784 and Compartment 2 is only accessible by foot through the water authority property.

Topography is mostly very steep side hills. The Highest elevation of 1814 feet is found on the ridge tops between Watt Hollow and Larry's Creek in Compartment 1. The lowest elevation of 940 feet is found along Larry's Creek where it leaves the Game Lands in Compartment 2. The Game Lands is located in the West Branch of the Susquehanna River watershed. Larry's Creek and its tributaries drain the Game Lands. The surrounding area is sparsely populated

The original purchase consisted of two parcels and the transaction took place in December 1935. According to paper work found in the files at NCRO there was once a tannery located along Larry's Creek on the north end of the game lands. It was noted that in 1972 that there were numerous ditches and stone walls evident that indicated where the tannery once stood.

State Game Lands 114 falls within the state's largest IMA, the Northern Allegheny Plateau, representing the last large block of relatively unfragmented forest habitat remaining in the state. Mammals found on the game lands include black bear, white-tailed deer, porcupine, coyote, bobcat, fisher, mink, and squirrels. Wild turkey and ruffed grouse are common and the late-successional forest also provides habitat that support many bird species of greatest the conservation need. Hunting pressure is not overly excessive due to the relative inaccessibility of most of the game lands.

Hiking, bird watching, fishing, and cross-country skiing are lawful recreational activities that occur occasionally.



6	SOUTHEAST REGIONAL HEADQUARTERS 253 SNYDER RD., READING, PA 19605	610-926-3136 610-926-3137
5	NORTHEAST REGIONAL HEADQUARTERS 3917 MEMORIAL HWY, DALLAS, PA 18612	570-675-1143 570-675-1144
4	8627 WILLIAM PENN HWY, HUNTINGDON, PA 16652	814-643-1831 814-643-1835
3	SOUTHCENTRAL REGIONAL HEADQUARTERS 1566 S ROUTE 44 HWY, JERSEY SHORE, PA 17740	570-398-4744 570-398-4745
2	NORTHWEST REGIONAL HEADQUARTERS 4820 ROUTE 711, BOULCAR, PA 15923	724-238-9524 724-238-9524
1	SOUTH WEST REGIONAL HEADQUARTERS 1509 PITTSBURG RD, FRANKLIN, PA 16323	814-432-3187 814-432-3188

FOR FURTHER INFORMATION  
CONTACT THE FOLLOWING: