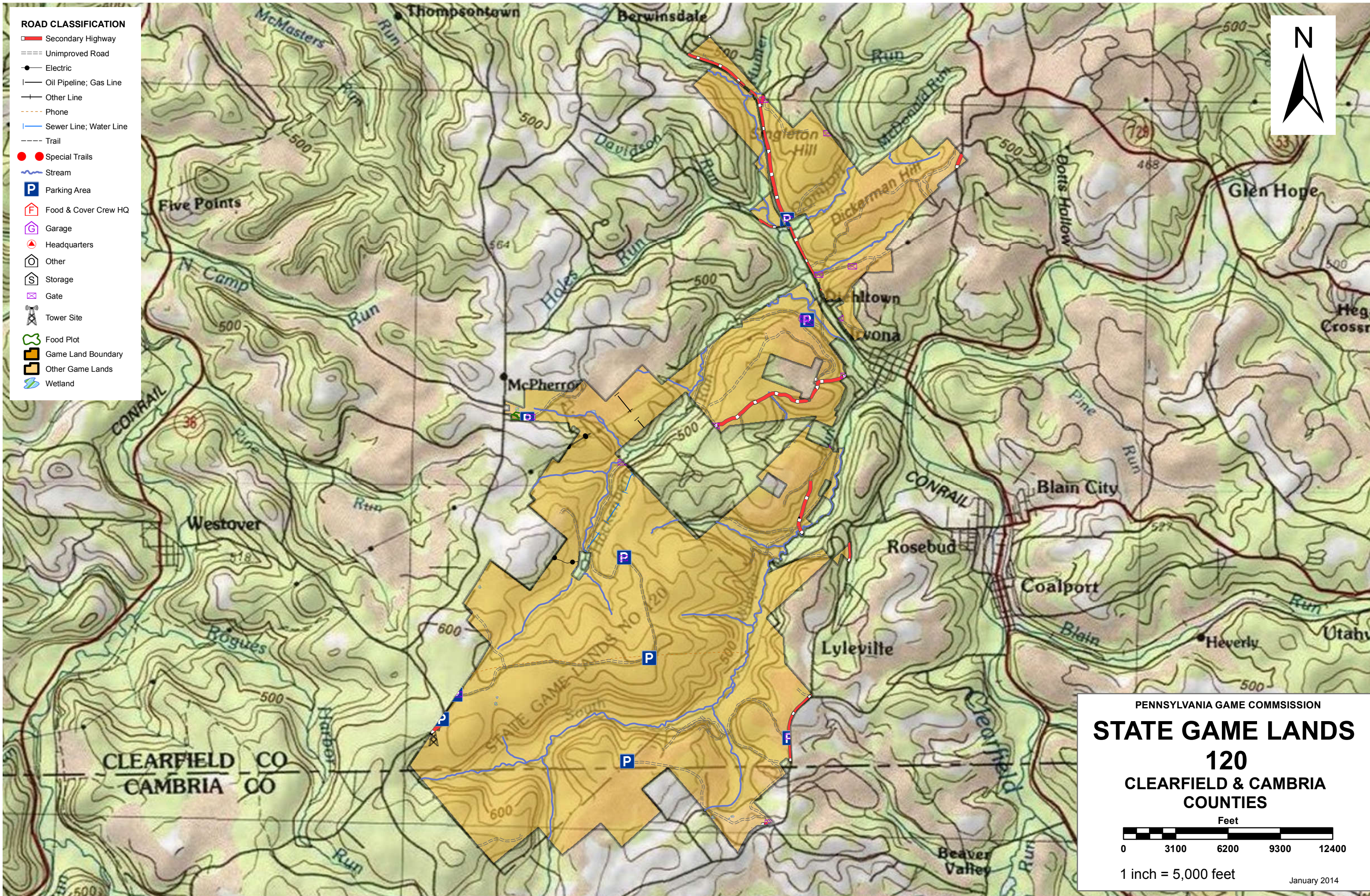


- ROAD CLASSIFICATION**
- Secondary Highway
 - Unimproved Road
 - Electric
 - Oil Pipeline; Gas Line
 - Other Line
 - Phone
 - Sewer Line; Water Line
 - Trail
 - Special Trails
 - Stream
 - Parking Area
 - Food & Cover Crew HQ
 - Garage
 - Headquarters
 - Other
 - Storage
 - Gate
 - Tower Site
 - Food Plot
 - Game Land Boundary
 - Other Game Lands
 - Wetland



PENNSYLVANIA GAME COMMISSION

STATE GAME LANDS 120

CLEARFIELD & CAMBRIA
COUNTIES

Feet

0 3100 6200 9300 12400

1 inch = 5,000 feet

January 2014

Service Layer Credits: Copyright © 2013 National Geographic Society, I-cubed



SPORTSMEN'S RECREATION MAP



STATE GAME LANDS No. 120 CLEARFIELD & CAMBRIA COUNTIES

Each time a hunter buys a hunting license, the money he spends goes toward many facets of wildlife management. Since 1920, close to a million and a half acres of State Game Lands have been acquired with these funds. Each year nearly \$7,000,000 is spent to improve wildlife habitat. Habitat improvements enhance living conditions for non-game birds and mammals as well as those species which are hunted. Pennsylvania hunters willingly share these lands with the non-hunting public, and with few exceptions, State Game Lands are open for general use year round. Surveys indicate that hunting accounts for only thirty-five percent of game land usage. The remaining sixty-five percent is used by the general public for non-hunting purposes.

“Working Together for Wildlife” is a Game Commission program providing everyone an opportunity to help support wildlife management in the areas for endangered and non-game animals. Monies derived from the “Working Together for Wildlife” Program are being used in Pennsylvania to re-introduce the osprey, river otter, bald eagle, peregrine falcon and provide habitat for other birds and mammals indigenous to the Commonwealth. Construction placement of blue bird houses on State Game Lands provides needed homes for this beautiful songbird. Islands in the Susquehanna River have been set aside as propagations areas for non-game shore birds. Numerous other projects are planned on State Game Lands and other public properties which will also provide food and habitat for non-game wildlife.

The future of Pennsylvania’s wildlife resources requires the concern, cooperation and financial support of everyone, hunters and non-hunters alike. “Working Together for Wildlife” is the answer. Send your contributions to “Working Together for Wildlife”, 2001 Elmerton Avenue, Harrisburg, Pennsylvania 17110-9797.

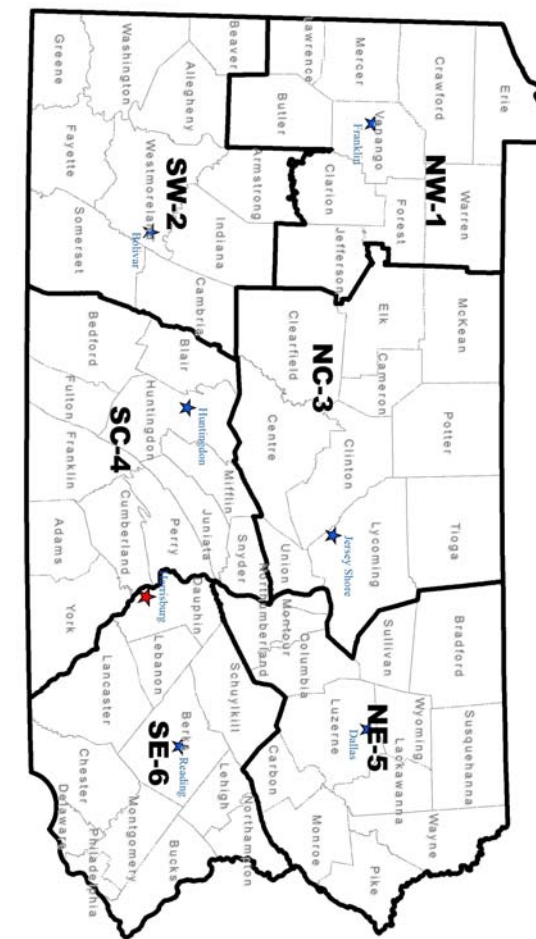
State game land (SGL) 120 is located in Chest Township, Cambria County as well as Jordan and Chest Township, Clearfield County in Wildlife Management Unit 2E, and currently has a deeded acreage of 7,651 acres. Located in Pennsylvania Game Commission's Southwest Region Wildlife Habitat Management Group Three. All water within this SGL is part of the Susquehanna River watershed.

The PGC currently maintains nine public parking areas on SGL 120, and there is parking along most of the township and state roads that traverse the game land. The farthest area by foot from any parking lot or public road is approximately one mile. All roads except two are currently closed year-round to public motor vehicle traffic and access is controlled with locked gates. The gated roads and rights-of-way provide access for hunters and avenues for hiking, wildlife photography and bird-watching.

Hunting for deer, grouse, and turkeys is popular in this area. Prominent furtaking opportunities include raccoon and red fox. Ring-necked pheasant are currently stocked on one reclaimed strip mine on SGL 120 where suitable habitat exists. Pheasant stocking of SGL 120 was initiated in 2012.

There are no designated trails for horseback riding and mountain biking. The gated roads and trails used for management activities and the operation of communication towers and herbaceous openings, along with a large gas transmission line and an extended public water supply line, provide very nice avenues for hiking, bird watching, and other similar forms of outdoor activities.

The overall goal for SGL 120 is to manage for mixed successional habitat. Practices that favor the habitat requirements of white-tailed deer, grouse, turkey, woodcock and forest bird species of greatest conservation need will be emphasized.



- 1 NORTHWEST REGIONAL HEADQUARTERS
1509 PITTSBURG RD, FRANKLIN, PA 16323
814-432-3187
- 2 SOUTHWEST REGIONAL HEADQUARTERS
4820 ROUTE 711, BOULCAR, PA 15923
724-238-9523
- 3 NORTH CENTRAL REGIONAL HEADQUARTERS
1566 S ROUTE 44 HWY, JERSEY SHORE, PA 17740
570-398-4744
- 4 SOUTH CENTRAL REGIONAL HEADQUARTERS
8627 WILLIAM PENN HWY, HUNTINGDON, PA 16652
814-643-1831
- 5 NORTHEAST REGIONAL HEADQUARTERS
3917 MEMORIAL HWY, DALLAS, PA 18612
570-675-1143
- 6 SOUTHEAST REGIONAL HEADQUARTERS
253 SNYDER RD, READING, PA 19605
610-926-3136

FOR FURTHER INFORMATION
CONTACT THE FOLLOWING:

COMMONWEALTH OF PENNSYLVANIA
PENNSYLVANIA GAME COMMISSION