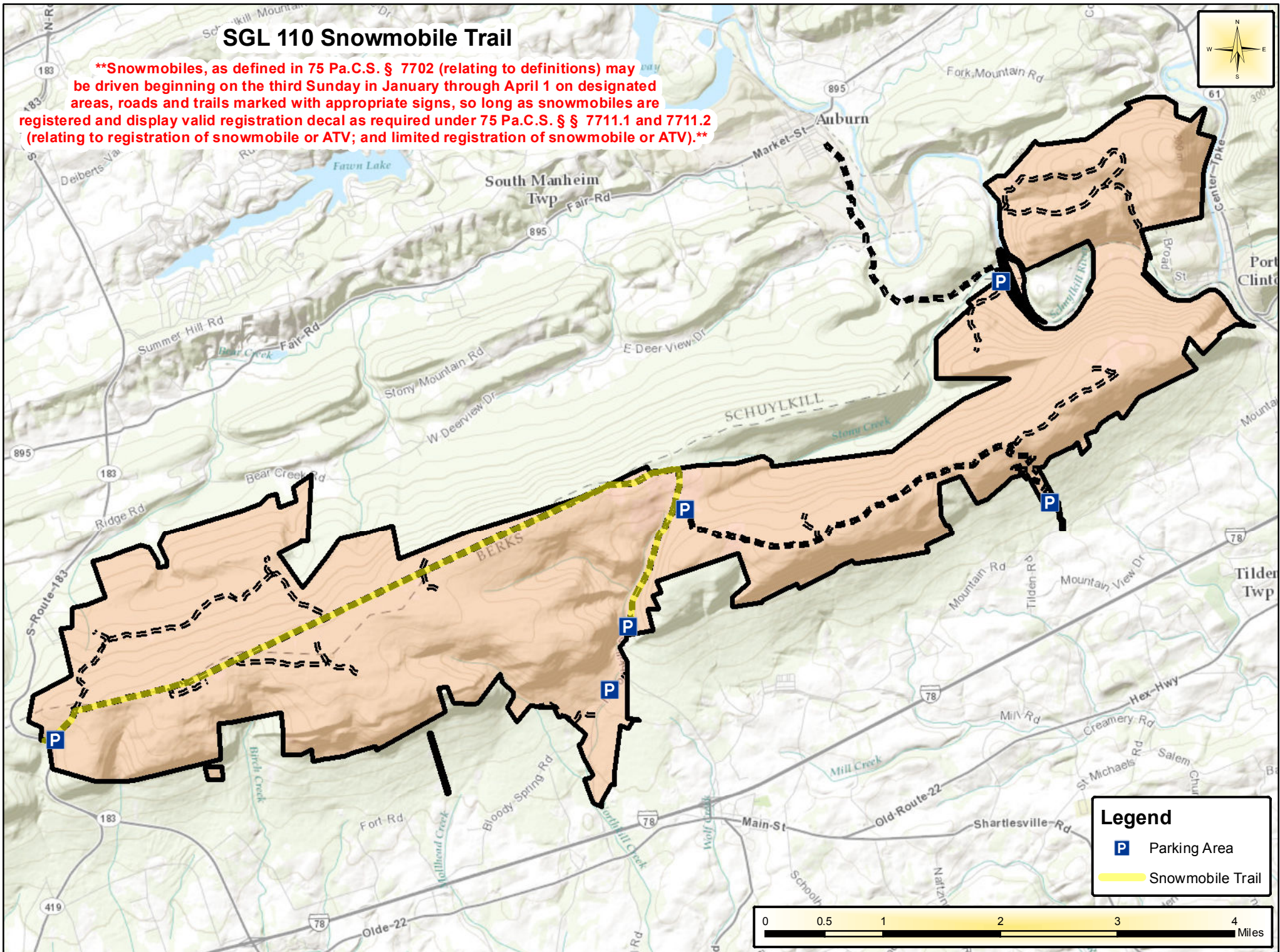
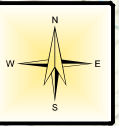


SGL 110 Snowmobile Trail

****Snowmobiles, as defined in 75 Pa.C.S. § 7702 (relating to definitions) may be driven beginning on the third Sunday in January through April 1 on designated areas, roads and trails marked with appropriate signs, so long as snowmobiles are registered and display valid registration decal as required under 75 Pa.C.S. § 7711.1 and 7711.2 (relating to registration of snowmobile or ATV; and limited registration of snowmobile or ATV).****



Legend

- Parking Area
- Snowmobile Trail

