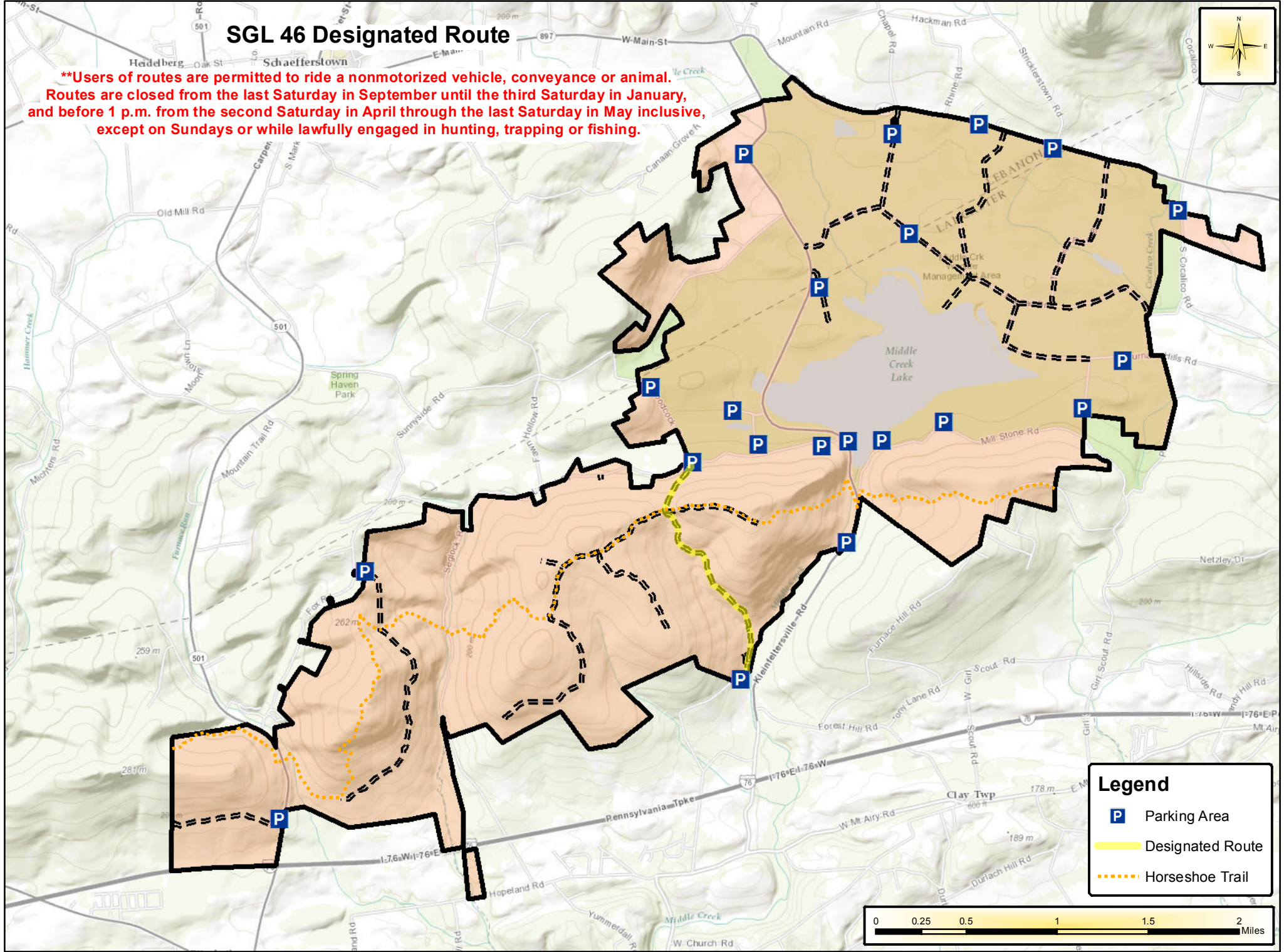
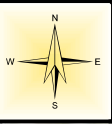


# SGL 46 Designated Route

**\*\*Users of routes are permitted to ride a nonmotorized vehicle, conveyance or animal.  
Routes are closed from the last Saturday in September until the third Saturday in January,  
and before 1 p.m. from the second Saturday in April through the last Saturday in May inclusive,  
except on Sundays or while lawfully engaged in hunting, trapping or fishing.**



**Legend**

- Parking Area
- Designated Route
- Horseshoe Trail

