

76°25'0"W

76°22'30"W

76°20'0"W

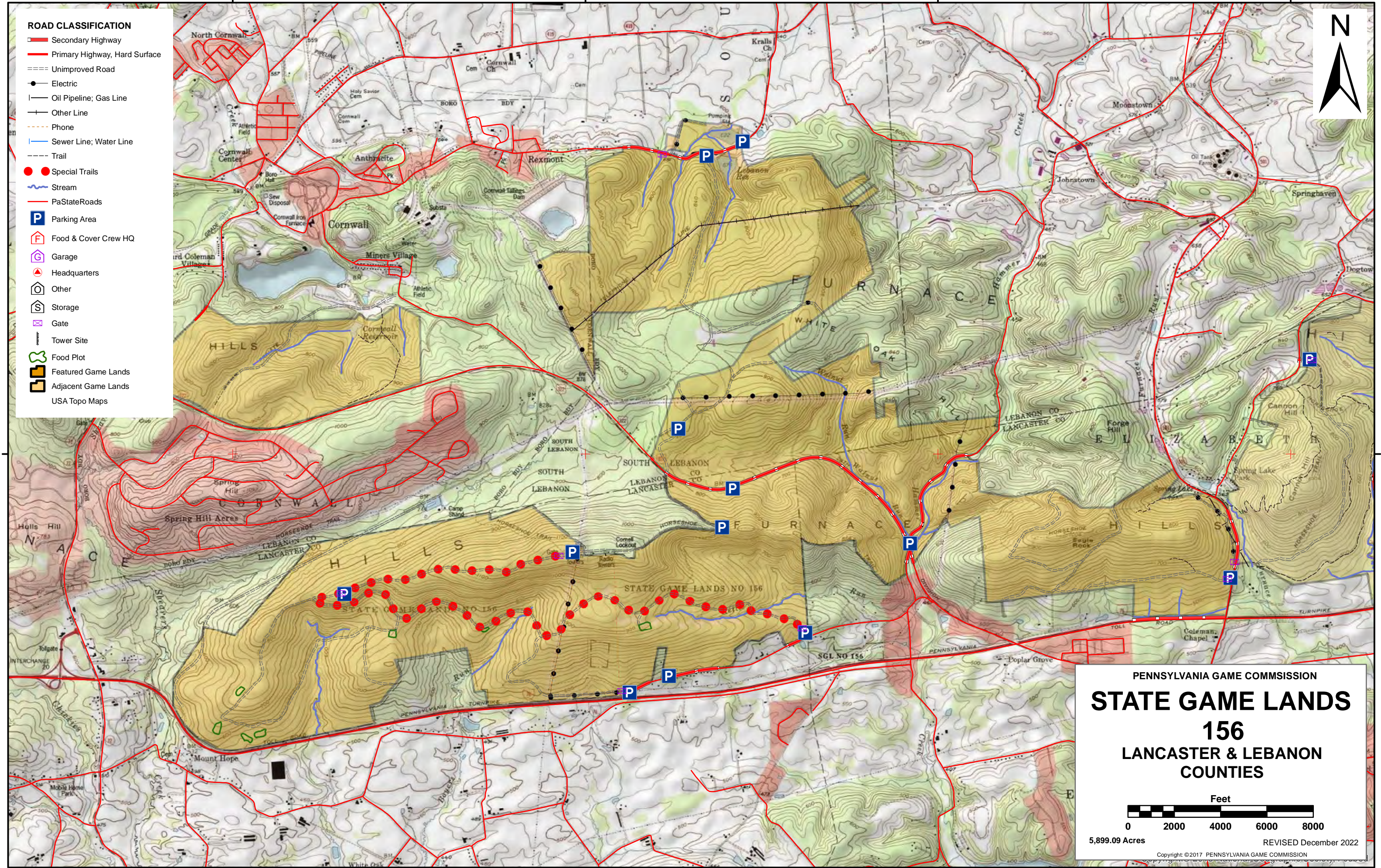
76°17'30"W

40°15'0"N

40°15'0"N

ROAD CLASSIFICATION

- Secondary Highway
- Primary Highway, Hard Surface
- Unimproved Road
- Electric
- Oil Pipeline; Gas Line
- Other Line
- Phone
- Sewer Line; Water Line
- Trail
- Special Trails
- Stream
- PaStateRoads
- Parking Area
- Food & Cover Crew HQ
- Garage
- Headquarters
- Other
- Storage
- Gate
- Tower Site
- Food Plot
- Featured Game Lands
- Adjacent Game Lands
- USA Topo Maps



PENNSYLVANIA GAME COMMISSION

STATE GAME LANDS

156

LANCASTER & LEBANON COUNTIES

Feet

0 2000 4000 6000 8000

5,899.09 Acres

REVISED December 2022

Copyright © 2017 PENNSYLVANIA GAME COMMISSION

76°25'0"W

76°22'30"W

76°20'0"W

76°17'30"W



SPORTSMEN'S RECREATION MAP



STATE GAME LANDS No. 156 LANCASTER & LEBANON COUNTIES

Each time a hunter buys a hunting license, the money he spends goes toward many facets of wildlife management. Since 1920, close to a million and a half acres of State Game Lands have been acquired with these funds. Each year nearly \$7,000,000 is spent to improve wildlife habitat. Habitat improvements enhance living conditions for non-game birds and mammals as well as those species which are hunted. Pennsylvania hunters willingly share these lands with the non-hunting public, and with few exceptions, State Game Lands are open for general use year round. Surveys indicate that hunting accounts for only thirty-five percent of game land usage. The remaining sixty-five percent is used by the general public for non-hunting purposes.

“Working Together for Wildlife” is a Game Commission program providing everyone an opportunity to help support wildlife management in the areas for endangered and non-game animals. Monies derived from the “Working Together for Wildlife” Program are being used in Pennsylvania to re-introduce the osprey, river otter, bald eagle, peregrine falcon and provide habitat for other birds and mammals indigenous to the Commonwealth. Construction placement of blue bird houses on State Game Lands provides needed homes for this beautiful songbird. Islands in the Susquehanna River have been set aside as propagations areas for non-game shore birds. Numerous other projects are planned on State Game Lands and other public properties which will also provide food and habitat for non-game wildlife.

The future of Pennsylvania’s wildlife resources requires the concern, cooperation and financial support of everyone, hunters and non-hunters alike. “Working Together for Wildlife” is the answer. Send your contributions to “Working Together for Wildlife”, 2001 Elmerton Avenue, Harrisburg, Pennsylvania 17110-9797.

State Game Lands 156 is located in southern Lebanon County and northern Lancaster County, and consists of two separate tracts. Game Lands 156 is situated entirely in Wildlife Management Unit 5B.

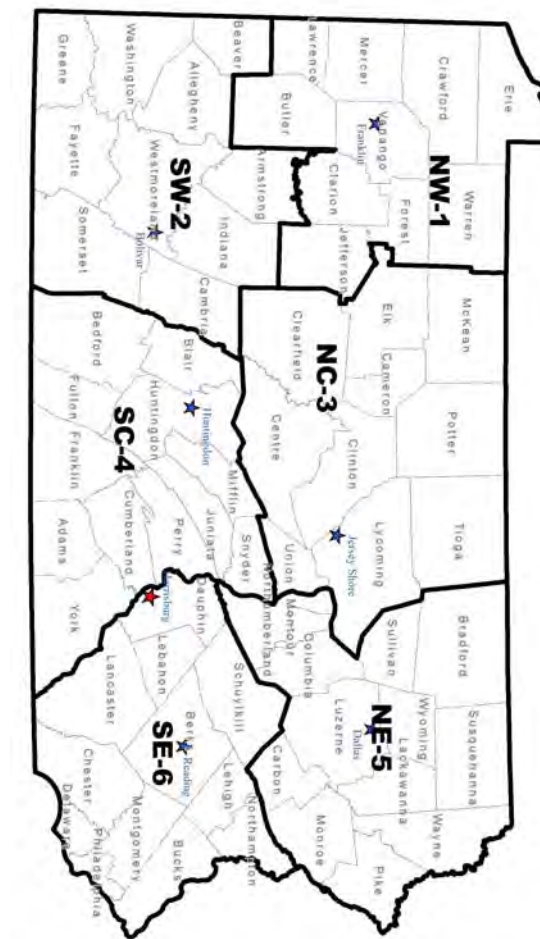
There are 9 maintained parking lots on SGL 156 and it is accessible primarily from PA Route 322 with two of the lots accessible from Boyd Street in Cornwall Borough and Rexmont Road. and the farthest point on SGL 156 by foot from a parking area or public road is approximately 0.7 mile. There are 15.4 miles of maintained administrative roads providing for public access to this area by foot. The gated roads and right-of-ways provide access for hunters and avenues for hiking, wildlife photography and bird-watching. Seven miles of roads are currently open to handicapped hunters and snowmobilers during the allowed seasons. All other roads are closed year round to public motor vehicle traffic. There is one designated route for horseback riding (the Horseshoe Trail) and mountain biking. The game lands is located directly adjacent to the PA Turnpike and is bisected by Route 322 west to east. It contains three reservoirs or ponds and is in the Hammer Creek drainage.

Both big game and small game are hunted on SGL 156. Deer, turkey, grouse and squirrels are hunted here. There are also opportunities for muskrat and mink trapping around the Hammer Creek and along the small tributaries. Red and gray fox, and raccoons are actively trapped on the game lands. Coyote hunting is also becoming more popular in the area. The farmland portion, which includes 25 acres of cultivated fields, is stocked with ring-necked pheasants.

Approximately 3.8 miles of the Horseshoe Trail bisects the game lands east to west and is open to hiking and mountain biking. From 15 January 15th thru 31 March 31, 7 miles of trail are open to snowmobiling. Beginning at the upper parking lot adjacent to the Cornwall Lookout Tower, the trail runs westward on a Game Commission secondary road for approximately 2 miles. From this point a hard left turn is required, and again, the trail follows a Game Commission secondary road for a distance of approximately 5 miles, crossing the PPL Co. and Denver and Ephrata Telephone Co. right-of-ways terminating in the lower parking lot located along Township Route 562 also known as Dead End Rd.

Horseback Riding trails area also designated with 7 miles of trails: From the first parking area off of Dead End Road, travel 5 miles west to the intersection of another road. At the intersection, turn to the right and travel east for 2 miles to the parking area adjacent to the Cornwall Lookout Tower.

There are many opportunities for hiking on the more than 12.5 miles of roads, trails and utility access lines found on the tract. Bird watching is a popular activity, as is cross-country skiing.



- 1 NORTHWEST REGIONAL HEADQUARTERS
1509 PITTSBURG RD, FRANKLIN, PA 16323
- 2 SOUTHWEST REGIONAL HEADQUARTERS
4820 ROUTE 711, BOULVAR, PA 15923
- 3 NORTHCENTRAL REGIONAL HEADQUARTERS
1566 S ROUTE 44 HWY, JERSEY SHORE, PA 17740
- 4 SOUTHCENTRAL REGIONAL HEADQUARTERS
8627 WILLIAM PENN HWY, HUNTINGDON, PA 16652
- 5 NORTHEAST REGIONAL HEADQUARTERS
3917 MEMORIAL HWY, DALLAS, PA 18612
- 6 SOUTHEAST REGIONAL HEADQUARTERS
253 SNYDER RD, READING, PA 19605

FOR FURTHER INFORMATION
CONTACT THE FOLLOWING:

- 814-432-3187
- 814-432-3188
- 724-238-9523
- 724-238-9524
- 570-398-4744
- 570-398-4745
- 814-643-1831
- 814-643-1835
- 570-675-1143
- 570-675-1144
- 610-926-3136
- 610-926-3137

COMMONWEALTH OF PENNSYLVANIA
PENNSYLVANIA GAME COMMISSION