



# Pennsylvania Game Commission

## Northwest Region



## State Game Land ATV Access Trails

It is unlawful to ride ATVs on State Game Lands, except on designated roads open for persons issued a Disabled Persons Permit, and who have a valid registration from the Department of Conservation & Natural Resources.



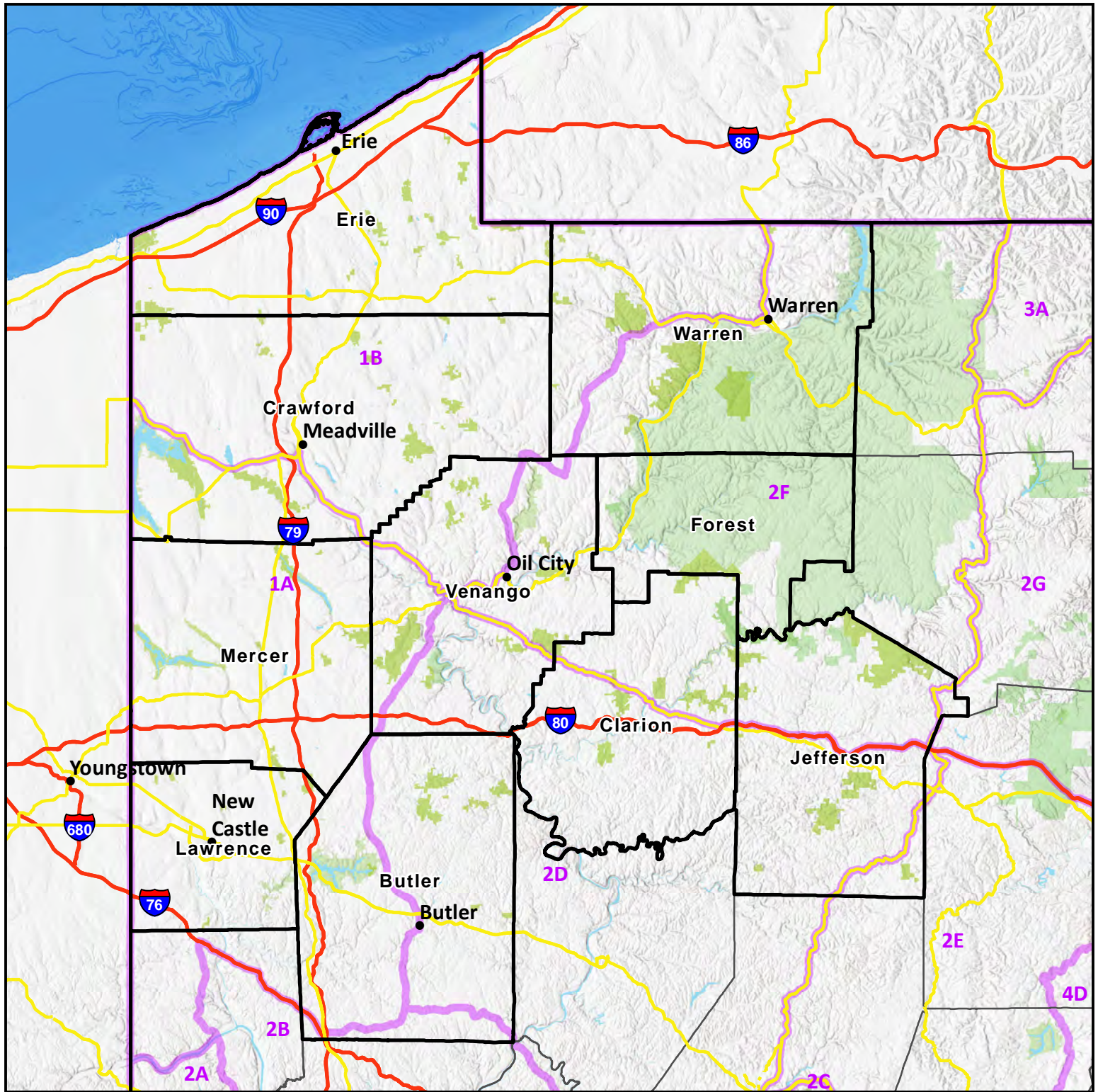
# Table of Contents

## State Game Land ATV Access Trails – Northwest Region

---

	<u>Page</u>
Northwest Region Overview Map .....	1
 <b><u>ATV Access Trails</u></b>	
SGL 24..... Forest County.....	2
SGL 39..... Venango County.....	3
SGL 74..... Clarion/Jefferson County.....	4
SGL 86..... Warren County.....	5
SGL 95..... Butler County.....	6
SGL 122..... Crawford County.....	7
SGL 143..... Warren County.....	8
SGL 151..... Lawrence County.....	9
SGL 154..... Erie County.....	10
SGL 244..... Jefferson County.....	11
Shenango River Reservoir* .....	12

\*Shenango River Reservoir is owned and operated by the United States Army Corps of Engineers. The Pennsylvania Game Commission manages approximately 3,000 acres of project land for wildlife purposes. Please check with USACE for any additional ATV regulations in the project area.



## Pennsylvania Game Commission - Northwest Region

**Keith Harbaugh, Director**

**Serving the following Counties:** Butler, Clarion, Crawford, Erie, Forest, Jefferson, Lawrence, Mercer, Venango, and Warren.



P.O. Box 31

Franklin, PA 16323

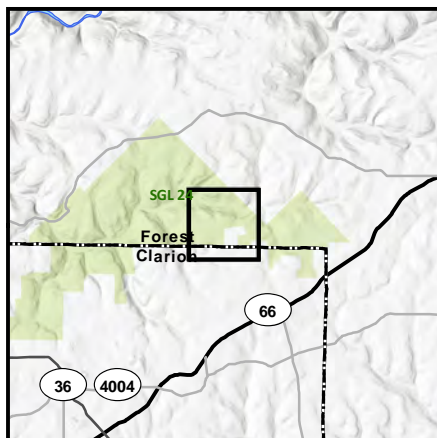
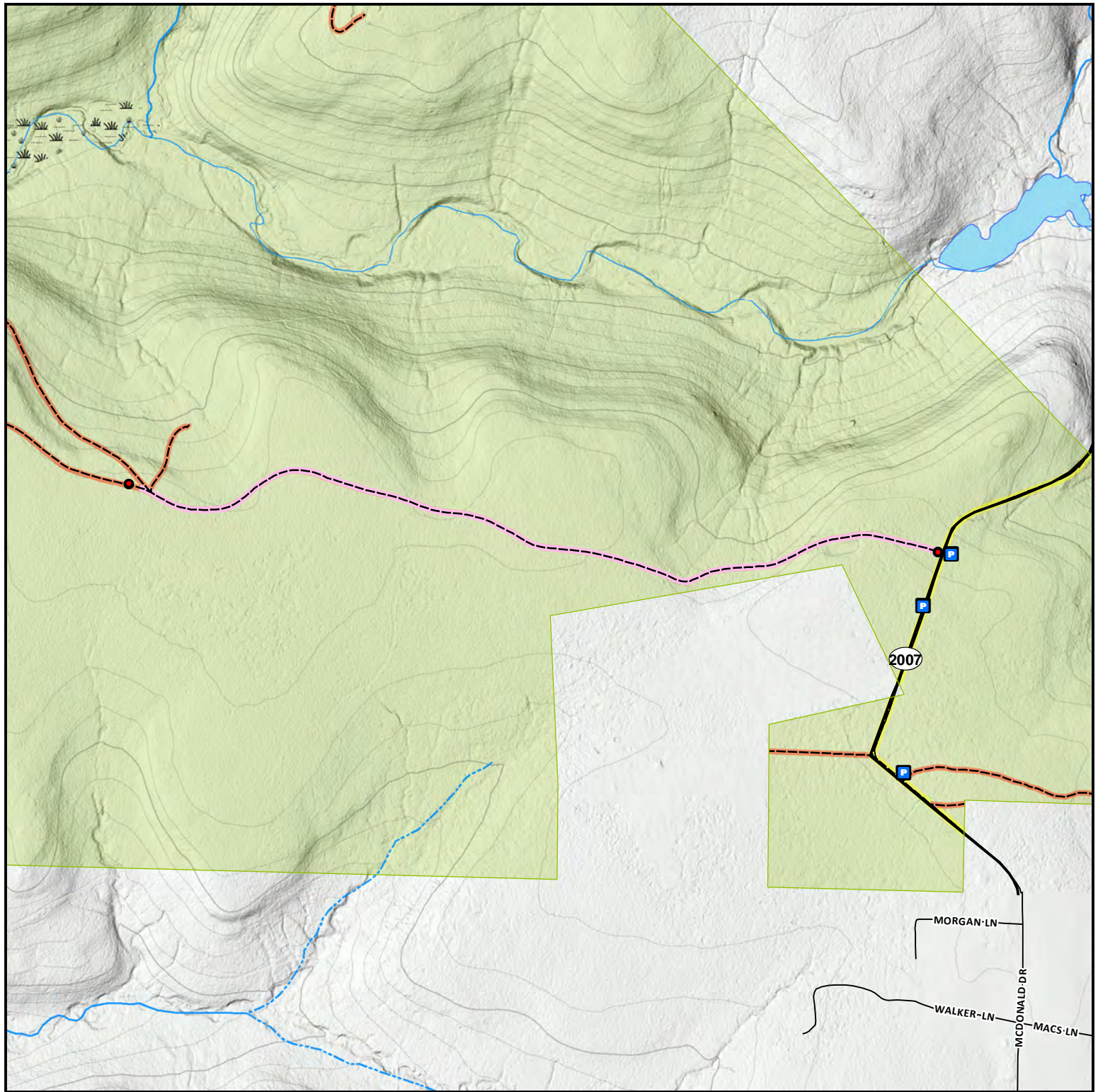
Phone: (814) 432-3187 or (814) 432-3188



0 5 10 20 30 40  
Miles

- Interstate Highway
- US Highway
- County Boundary
- Wildlife Management Unit
- State Game Lands
- State Forest
- State Park





Parking Area



Gate

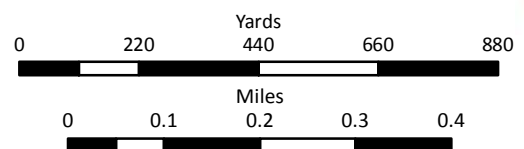
Disabled Persons ATV Trail

Administrative Road -  
Closed to Public

Public Road

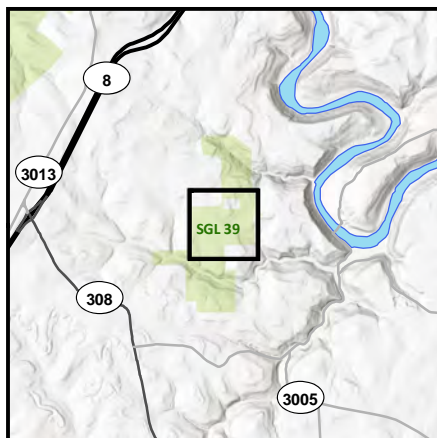
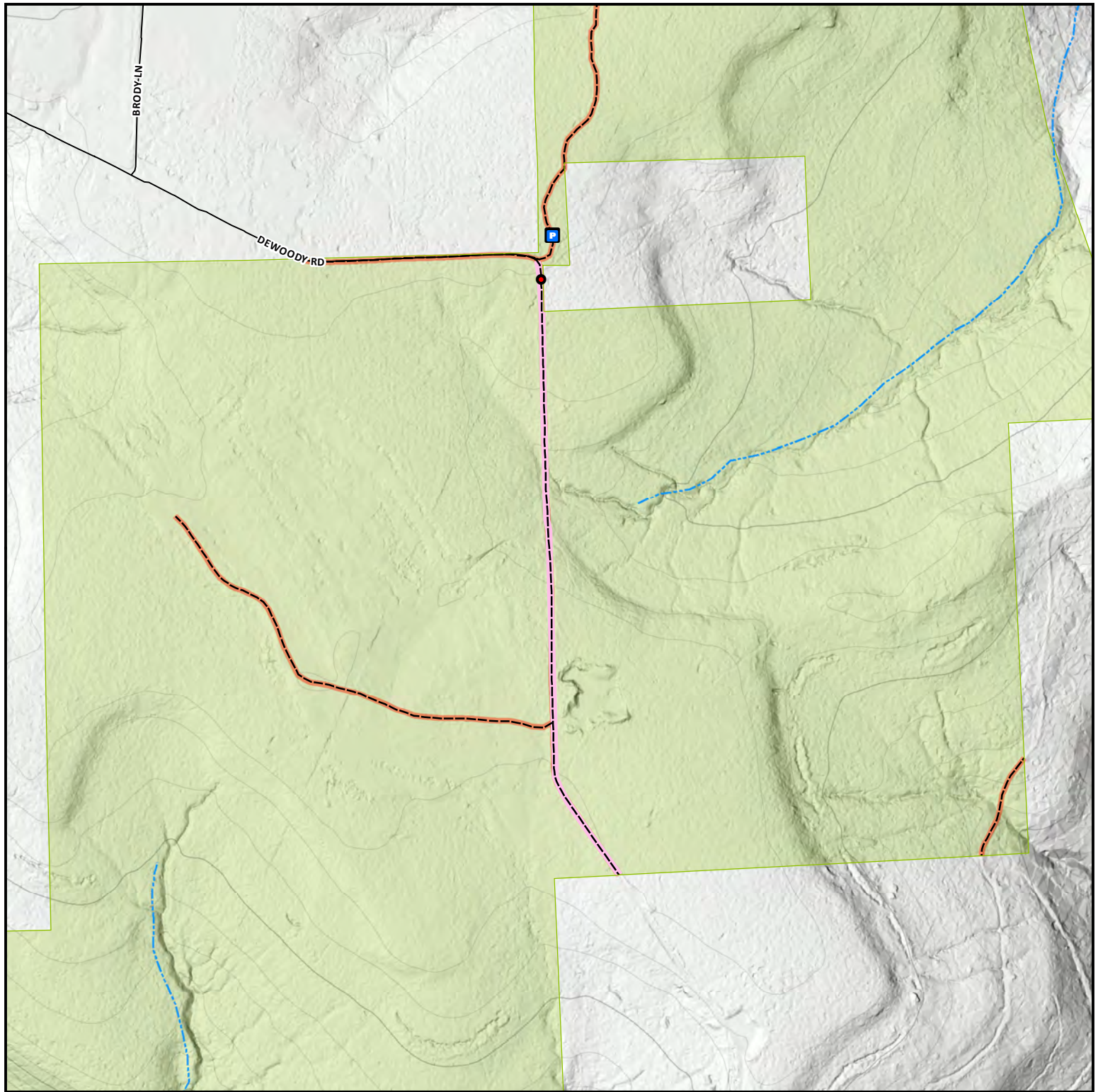
State Game Lands

## State Game Lands 24



It is unlawful to ride ATVs on State Game Lands, except on designated roads open for persons issued a Disabled Person Permit, and who have a valid registration from the Department of Conservation & Natural Resources.





Parking Area



Gate

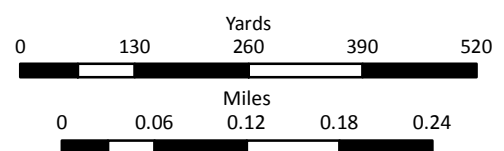
Disabled Persons ATV Trail

Administrative Road -  
Closed to Public

Public Road

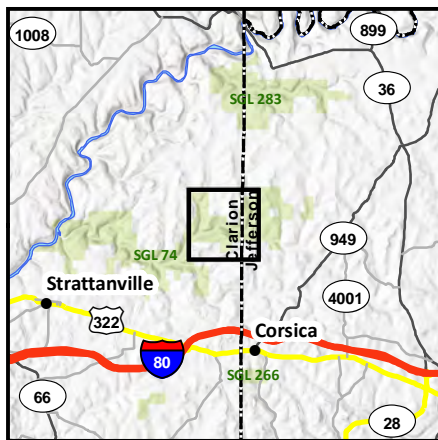
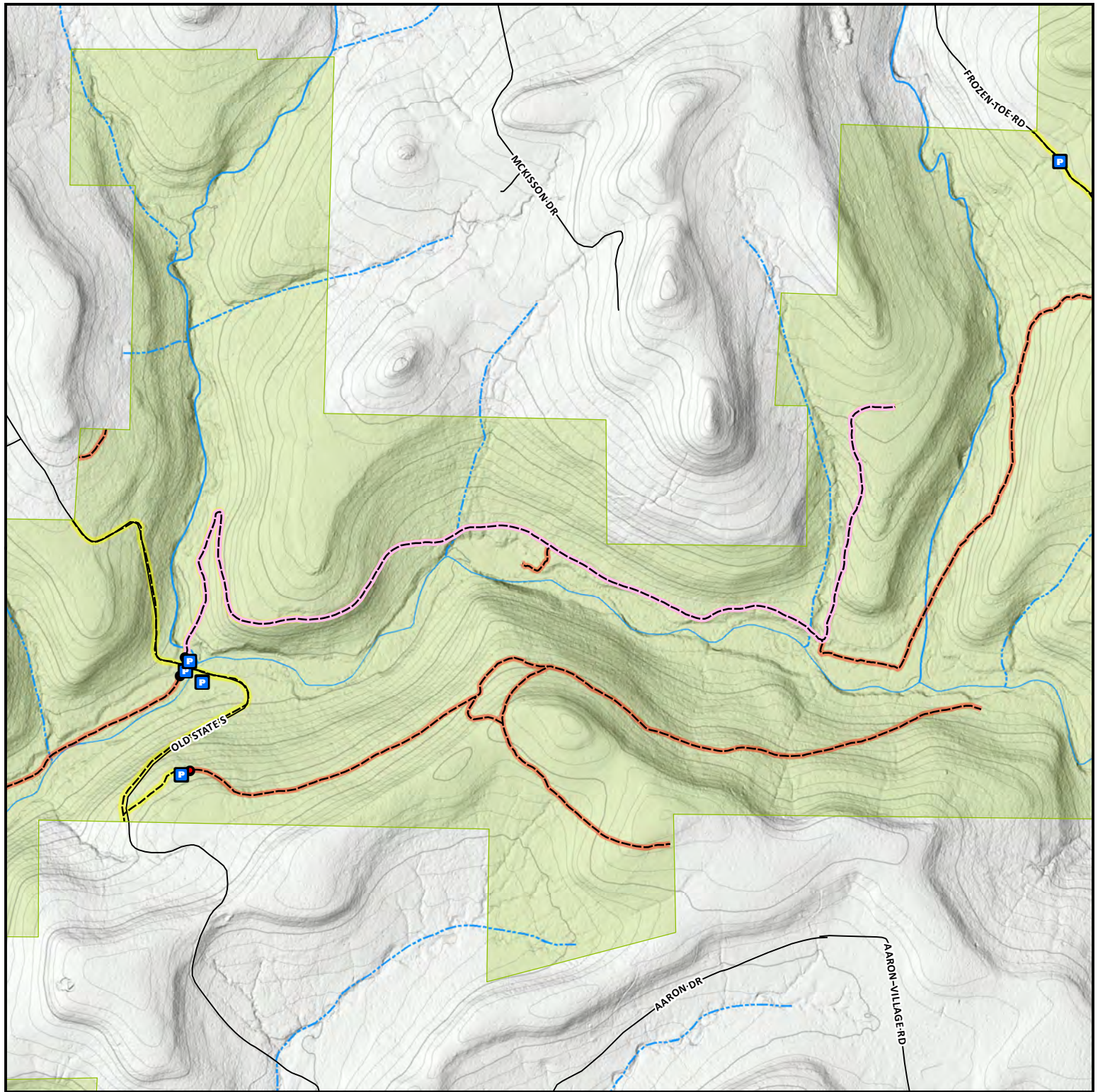
State Game Lands

## State Game Lands 39



It is unlawful to ride ATVs on State Game Lands, except on designated roads open for persons issued a Disabled Person Permit, and who have a valid registration from the Department of Conservation & Natural Resources.





Parking Area



Gate

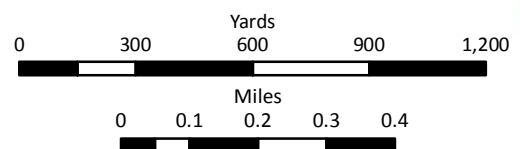
Disabled Persons ATV Trail

Administrative Road -  
Closed to Public

Public Road

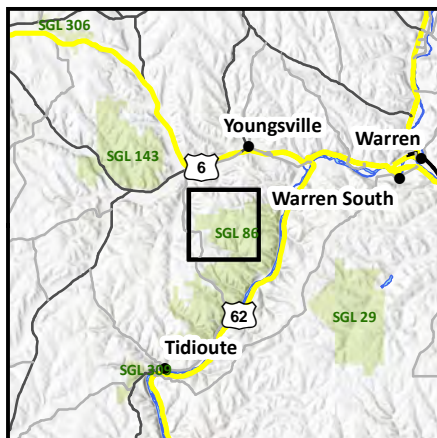
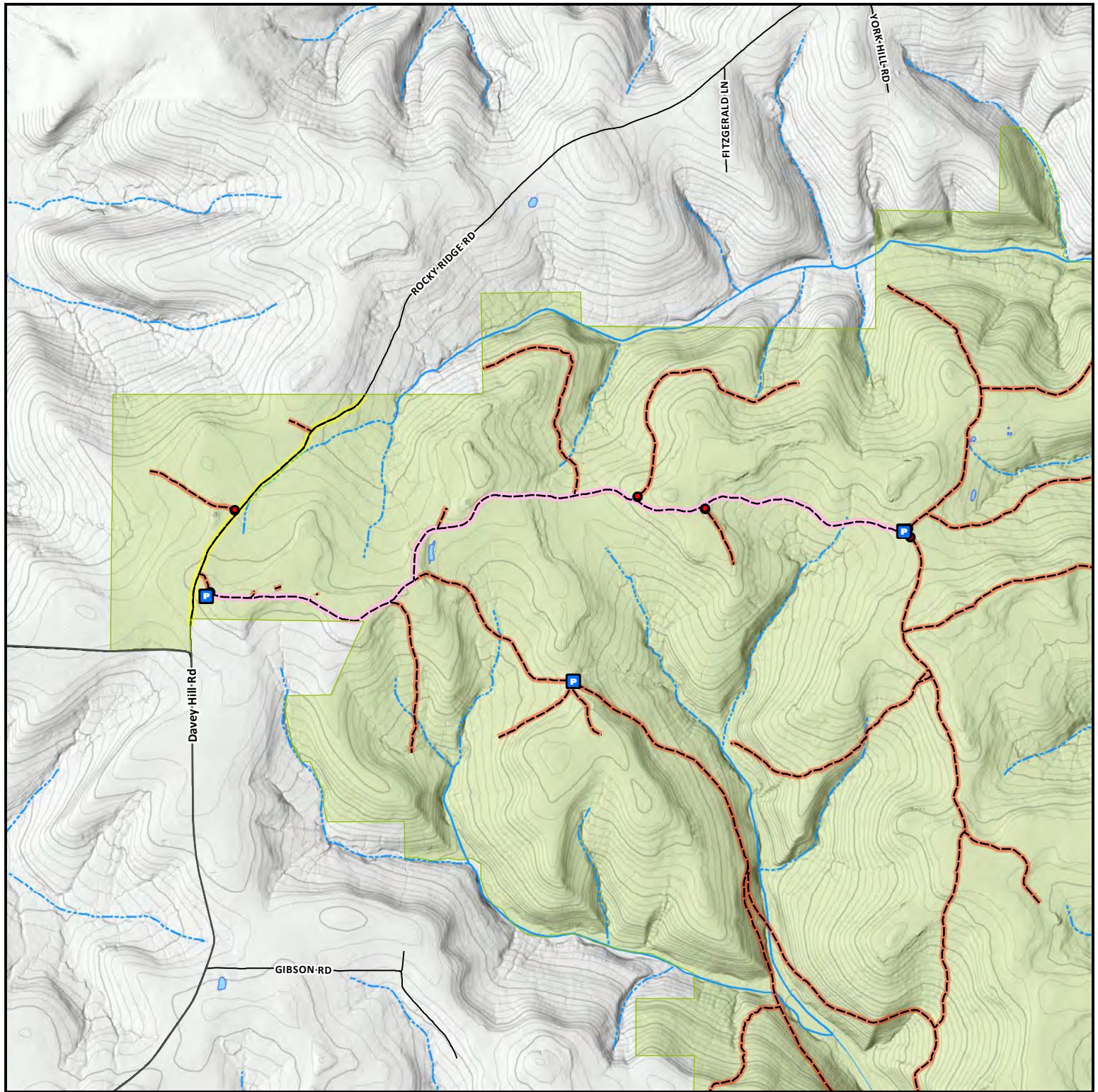
State Game Lands

## State Game Lands 74



It is unlawful to ride ATVs on State Game Lands, except on designated roads open for persons issued a Disabled Person Permit, and who have a valid registration from the Department of Conservation & Natural Resources.





Parking Area



Gate

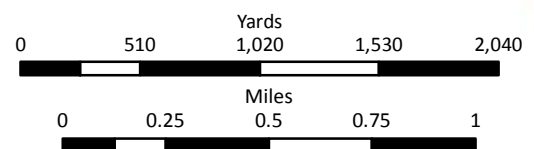
Disabled Persons ATV Trail

Administrative Road -  
Closed to Public

Public Road

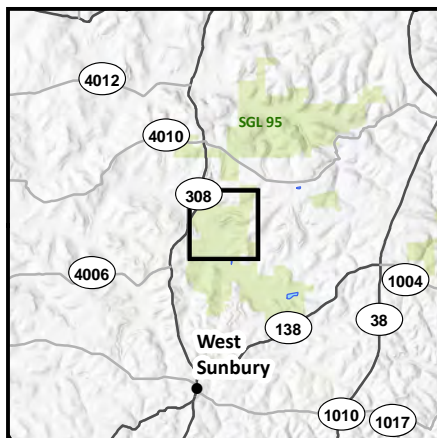
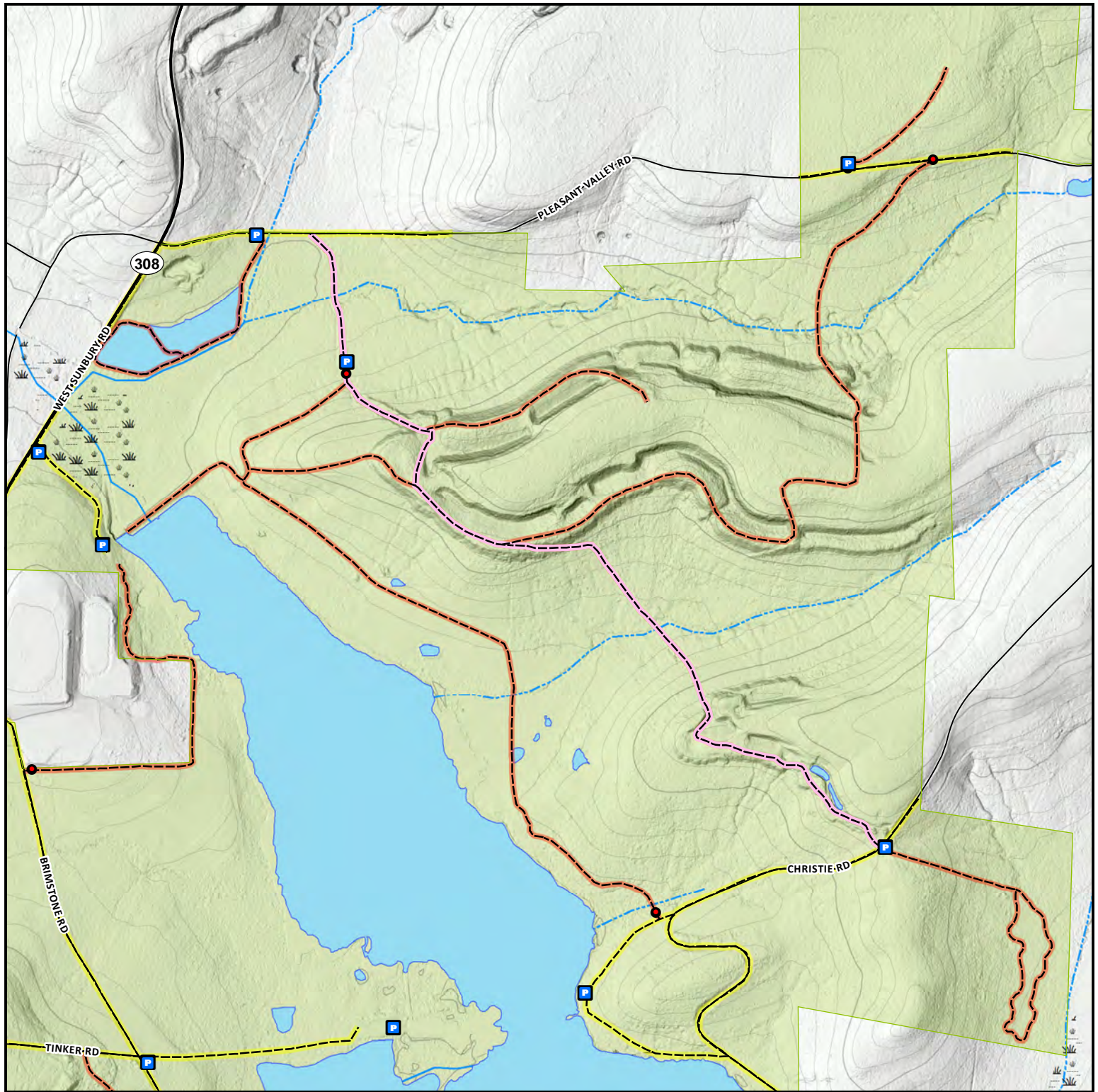
State Game Lands

## State Game Lands 86



It is unlawful to ride ATVs on State Game Lands, except on designated roads open for persons issued a Disabled Person Permit, and who have a valid registration from the Department of Conservation & Natural Resources.





Parking Area



Gate

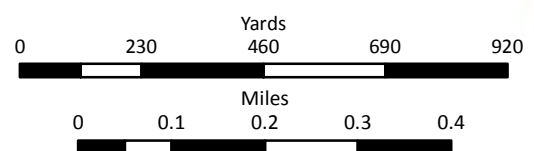
Disabled Persons ATV Trail

Administrative Road -  
Closed to Public

Public Road

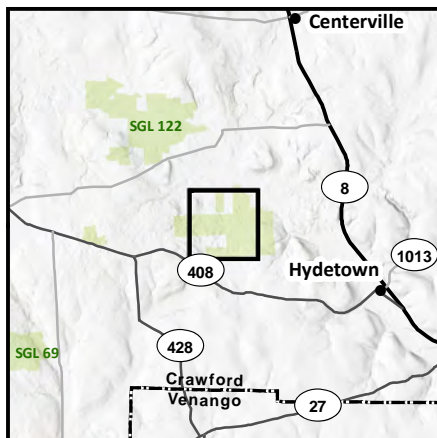
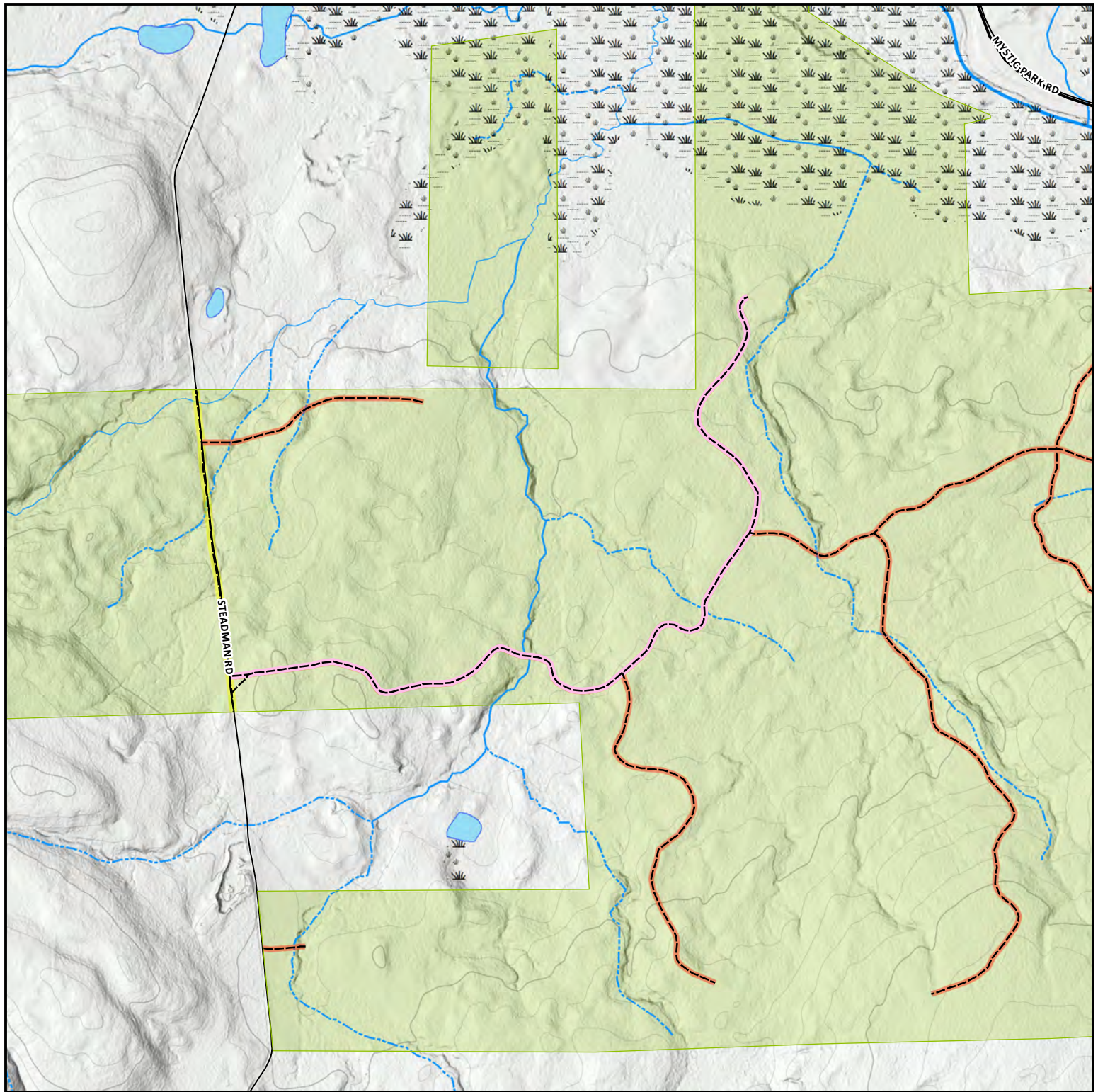
State Game Lands

## State Game Lands 95



It is unlawful to ride ATVs on State Game Lands, except on designated roads open for persons issued a Disabled Person Permit, and who have a valid registration from the Department of Conservation & Natural Resources.





Parking Area



Gate

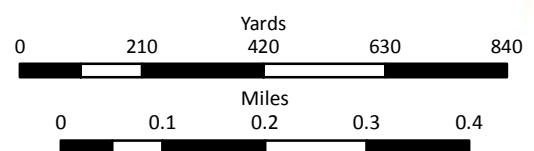
Disabled Persons ATV Trail

Administrative Road -  
Closed to Public

Public Road

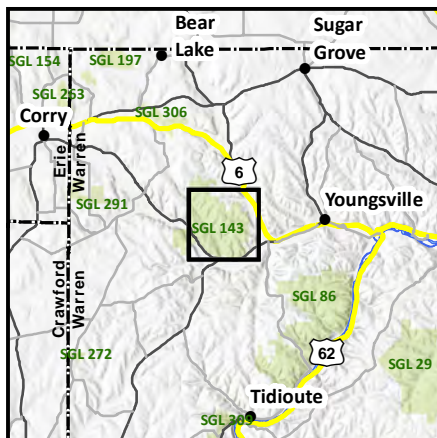
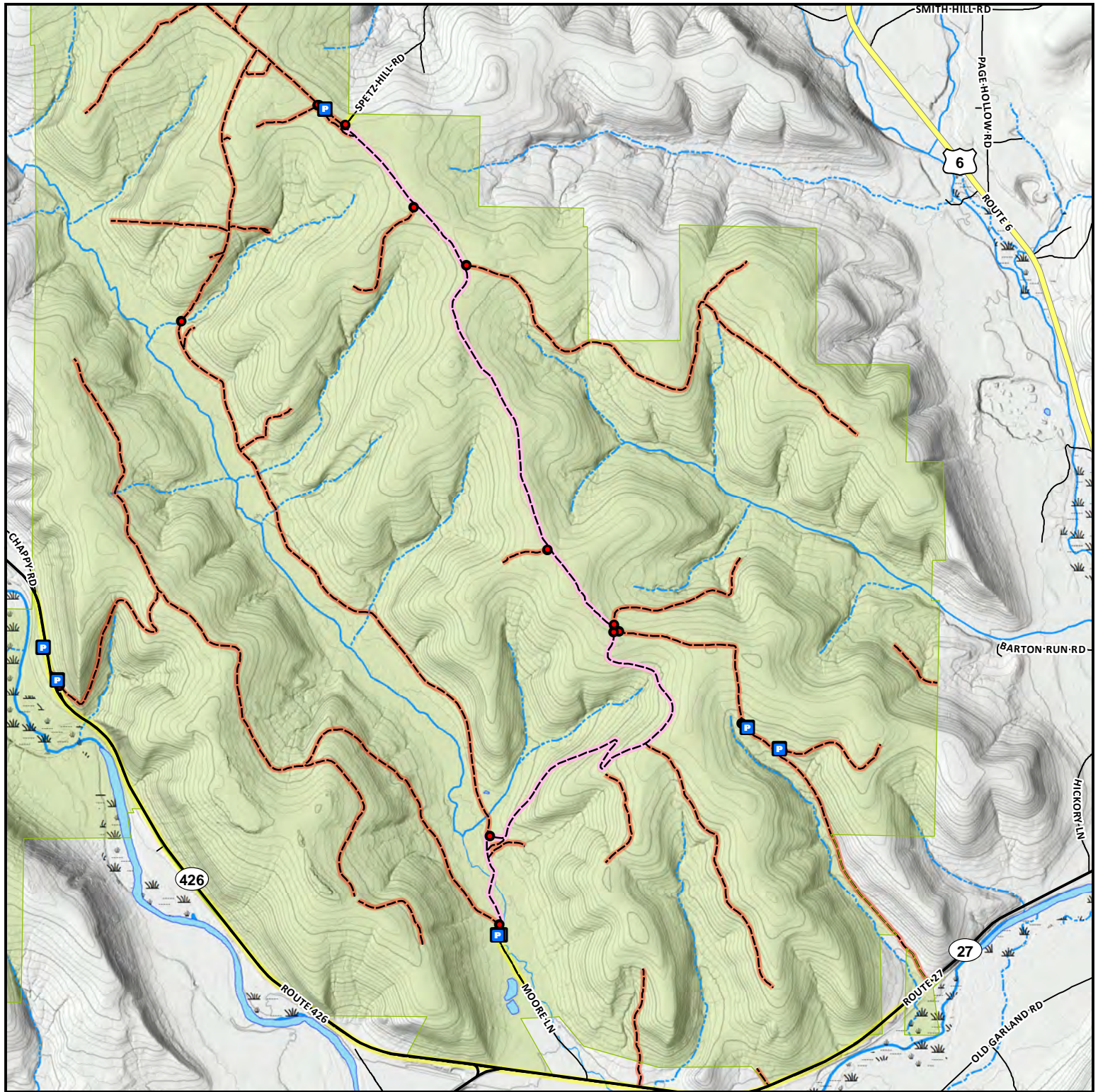
State Game Lands

## State Game Lands 122



It is unlawful to ride ATVs on State Game Lands, except on designated roads open for persons issued a Disabled Person Permit, and who have a valid registration from the Department of Conservation & Natural Resources.





Parking Area



Gate

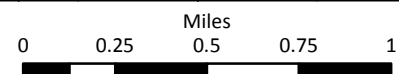
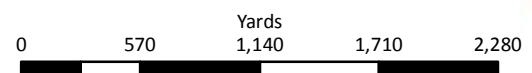
Disabled Persons ATV Trail

Administrative Road -  
Closed to Public

Public Road

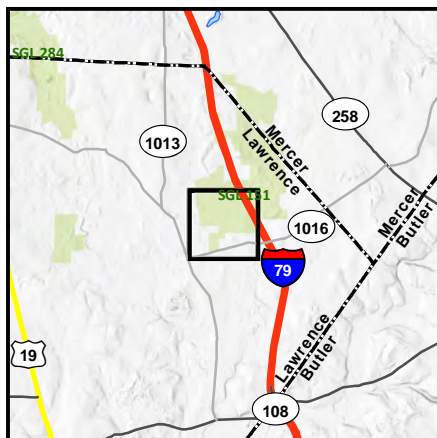
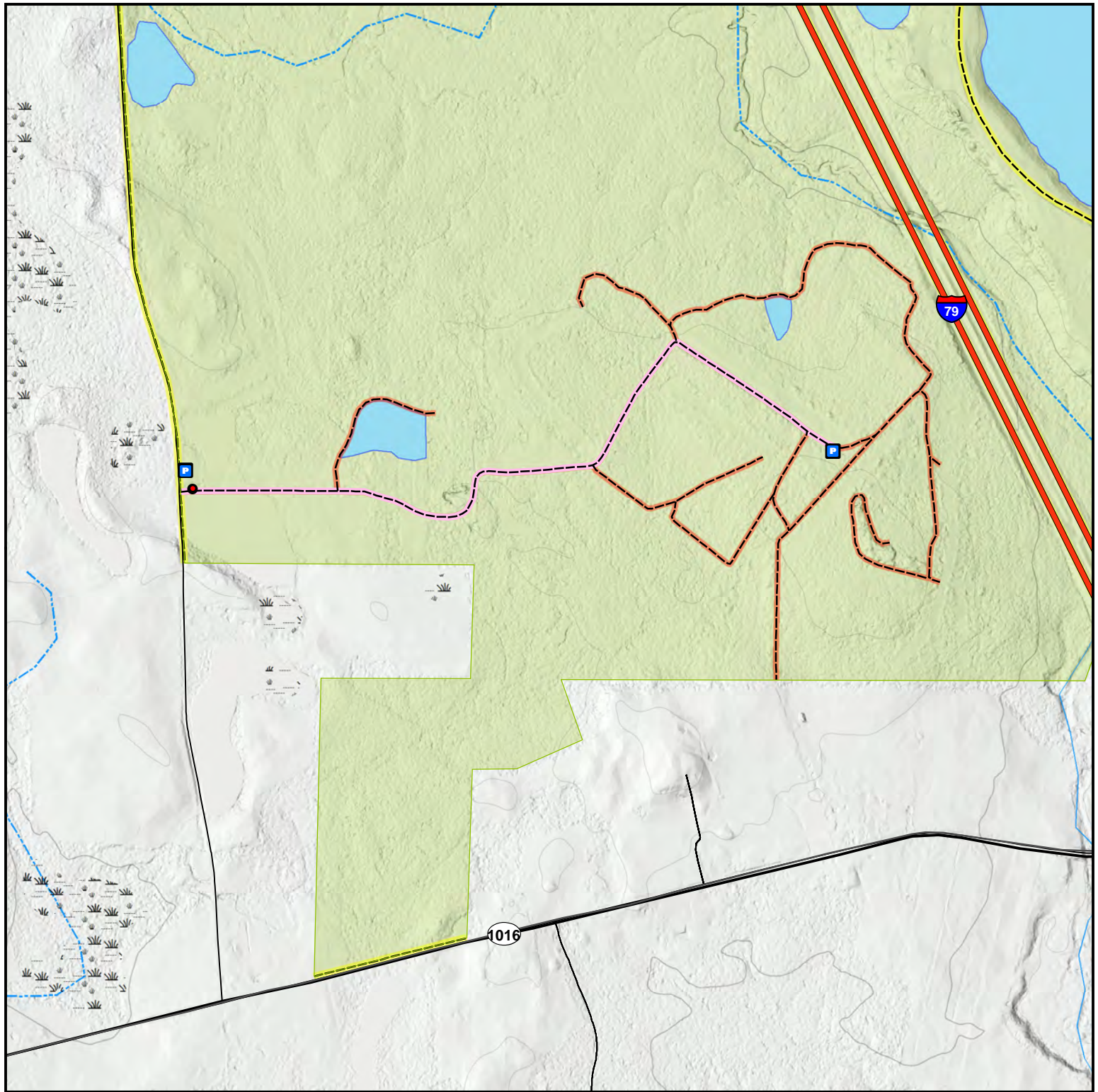
State Game Lands

## State Game Lands 143



It is unlawful to ride ATVs on State Game Lands, except on designated roads open for persons issued a Disabled Person Permit, and who have a valid registration from the Department of Conservation & Natural Resources.





Parking Area



Gate

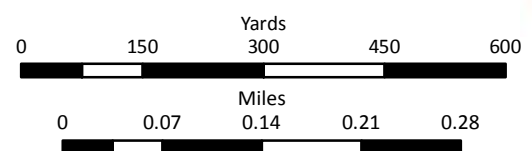
Disabled Persons ATV Trail

Administrative Road -  
Closed to Public

Public Road

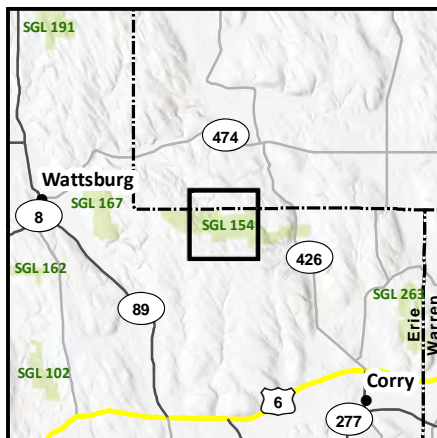
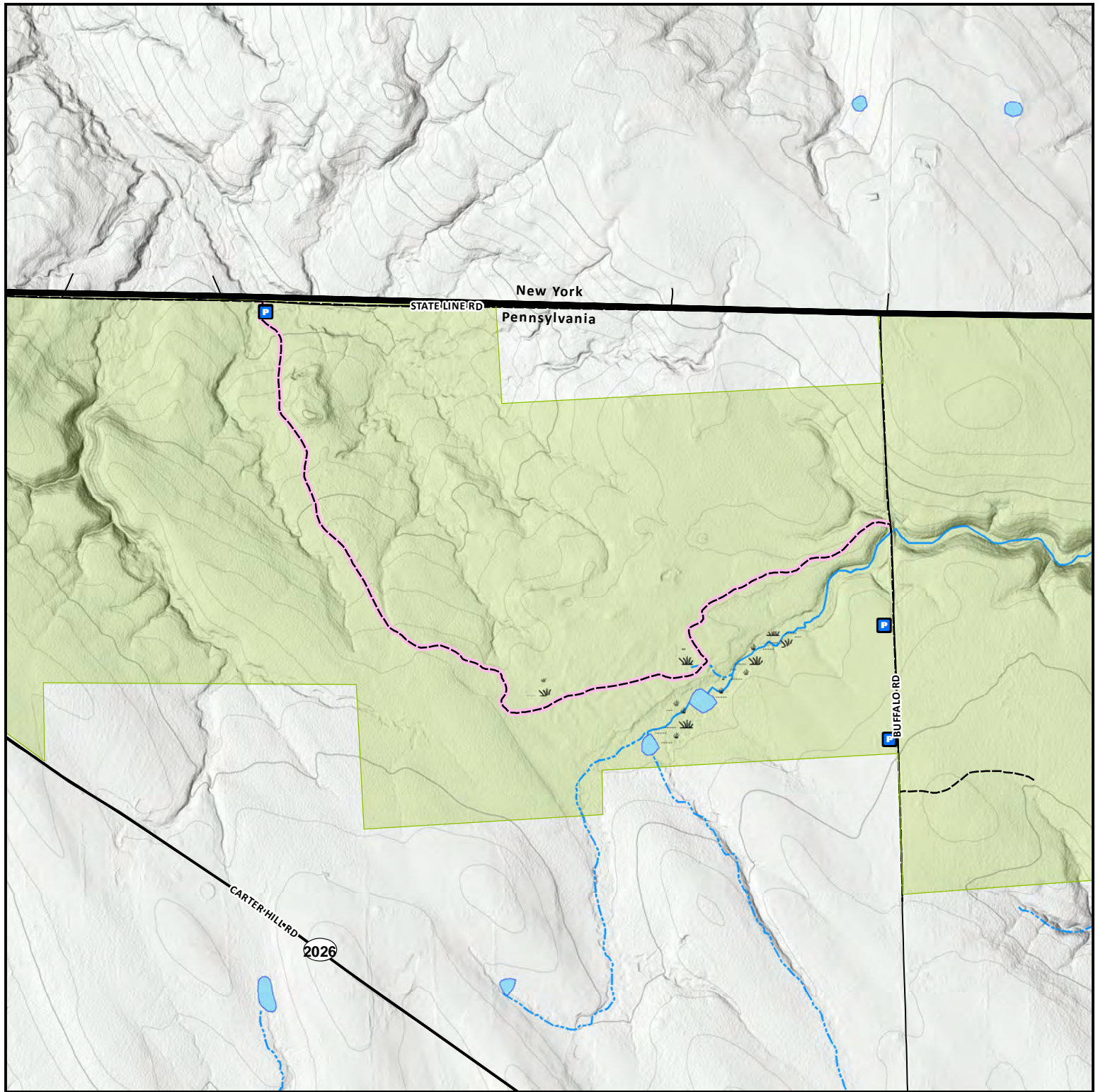
State Game Lands

## State Game Lands 151



It is unlawful to ride ATVs on State Game Lands, except on designated roads open for persons issued a Disabled Person Permit, and who have a valid registration from the Department of Conservation & Natural Resources.





Parking Area



Gate

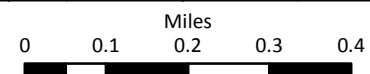
Disabled Persons ATV Trail

Administrative Road -  
Closed to Public

Public Road

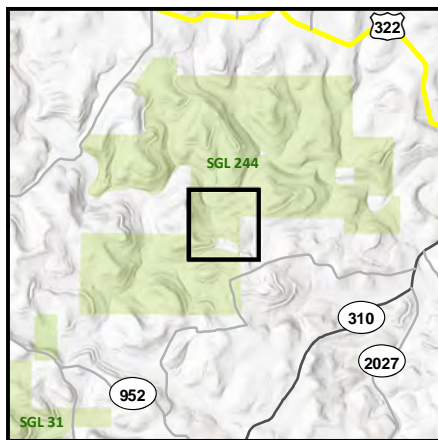
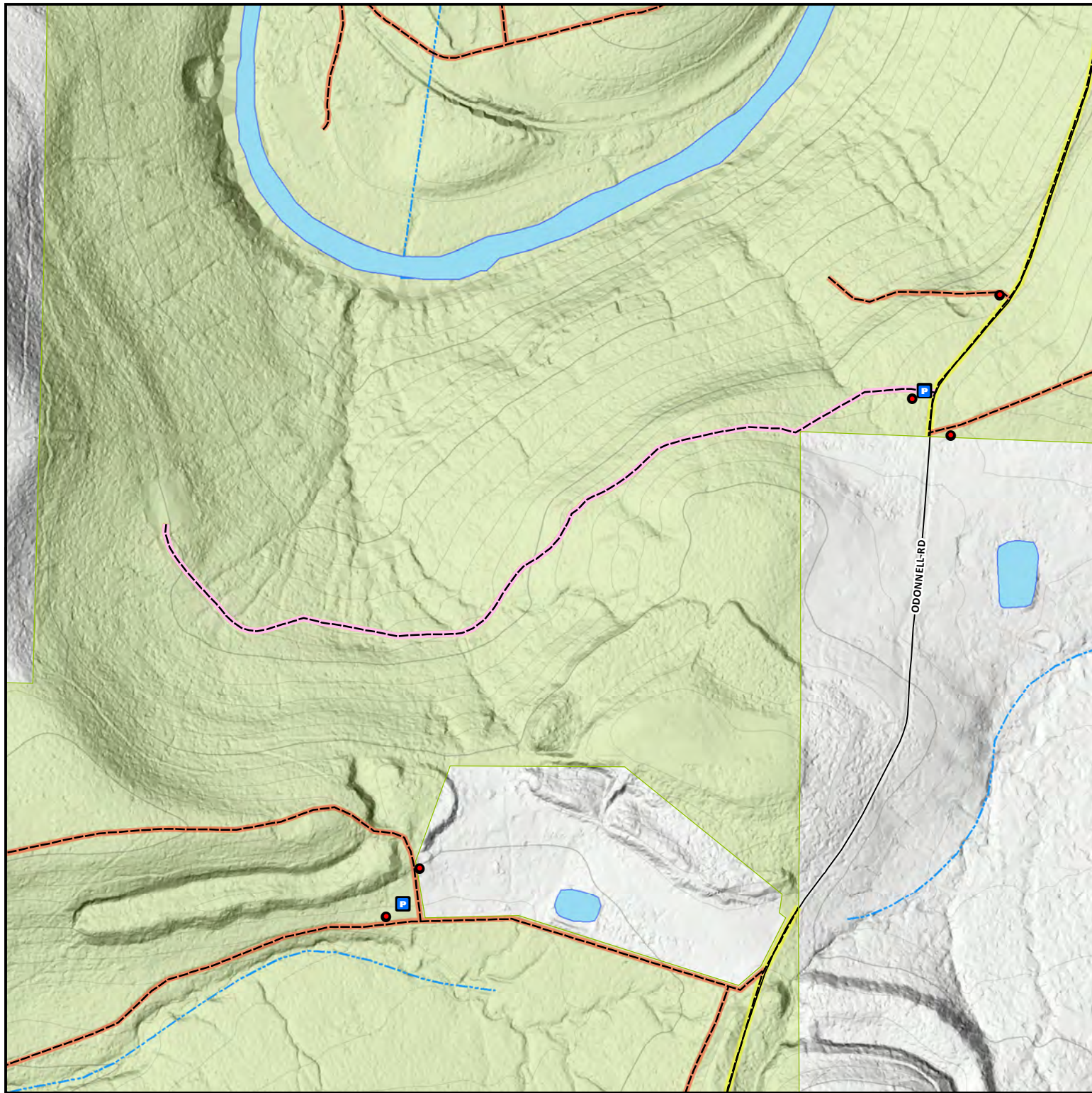
State Game Lands

## State Game Lands 154



It is unlawful to ride ATVs on State Game Lands, except on designated roads open for persons issued a Disabled Person Permit, and who have a valid registration from the Department of Conservation & Natural Resources.





Parking Area



Gate

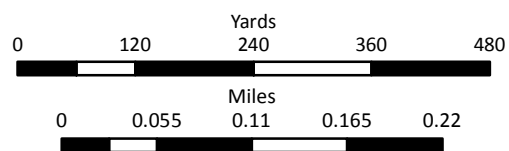
Disabled Persons ATV Trail

Administrative Road -  
Closed to Public

Public Road

State Game Lands

## State Game Lands 244



It is unlawful to ride ATVs on State Game Lands, except on designated roads open for persons issued a Disabled Person Permit, and who have a valid registration from the Department of Conservation & Natural Resources.



