

Plan 18 Turtle and Duck Loafing Platform

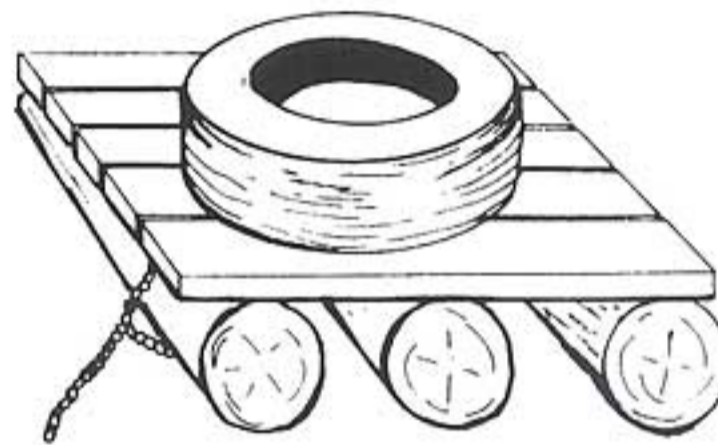
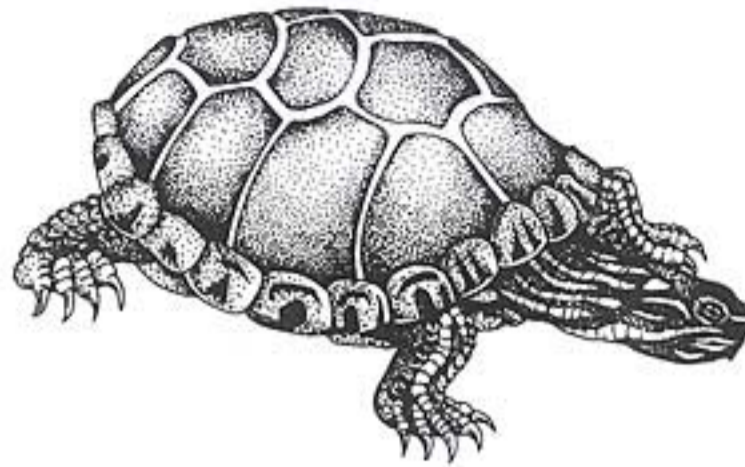
SUPPLIES NEEDED:

- One 8" diameter utility pole - 12' long
- Four 2" X 6" X 8' pine boards
- About 20' of welded link chain; more or less depending on water depth
- Four bolts, nuts and washers
- Two 8" X 8" X 16" foundation blocks
- Four dozen galvanized nails

ASSEMBLY INSTRUCTIONS:

This floating platform requires three lengths of about 8 inch diameter power poles 4 feet long. Lay the posts parallel in order to make a 4' X 4' platform on top of the posts. Lay the posts parallel in order to make a 4' X 4' platform on top of the posts. Nail 4-foot lengths of 2" X 6" pine boards perpendicular to the posts. Space boards about 1" apart. The exact length and width of the platform is not so important. It is important that the platform floats low enough for easy access by a turtle. Waterlogged platforms can be "raised" by inserting styrofoam between the poles.

Place the platform in 2 to 4 feet of water. A length of welded link chain should be bolted around the posts on opposing corners of the platform. Each chain should be 3 feet longer than the depth of the water mark to the bottom. Each chain should be bolted to an 8" X 8" X 16" concrete foundation block. The double anchor blocks are dropped 6 feet apart to prevent the platform from constantly pivoting in the wind.



Anchor chain

