

**Turkey Hunting-Related Shooting Incidents**

# Summary Report 1982-2009



**Hunter-Trapper  
Education  
Division**

**Summary  
of  
Spring Turkey  
HRSIs**

**1982-2009**

## Hunting Related Shooting Incidents from 1/1/1982 to 12/31/1982 INCIDENTS INVOLVING SPRING TURKEY

**Hunting Related Shooting Incident Reporting**

HRSIS Report: 02

		<i>Non-</i>				<i>Non-</i>	
	<i>Fatal</i>	<i>Fatal</i>	<i>Total</i>		<i>Fatal</i>	<i>Fatal</i>	<i>Total</i>
<b>Number of Incidents</b>				<b>Distance Between Victim/Offender Mistaken for Game</b>			
**** TOTALS ****		8	8	76 - 150 FEET		5	5
<b>Injury Type</b>				151 - 300 FEET		2	2
INFLECTED BY OTHERS		8	8	<b>Color Worn by Victim Mistaken for Game</b>			
<b>Sporting Arm Used</b>				CAMOUFLAGE		1	1
SHOTGUN		8	8	OTHER COLOR		5	5
<b>Species Hunted</b>				NOT REPORTED		1	1
TURKEY		8	8	<b>Victim Position</b>			
<b>Victim Age</b>				STANDING		2	2
21 - 50 YEARS		5	5	WALKING/RUNNING		3	3
OVER 50 YEARS		3	3	SITTING		3	3
<b>Offender Age</b>				<b>Victim Was</b>			
16 - 20 YEARS		1	1	NOT REPORTED		8	8
21 - 50 YEARS		4	4	<b>Offender Was</b>			
OVER 50 YEARS		2	2	NOT REPORTED		8	8
				<b>Gauge</b>			
<b>Light Conditions</b>				NOT REPORTED		8	8
DAYLIGHT		8	8	<b>Shot Size</b>			
<b>Weather Conditions</b>				NOT REPORTED		8	8
CLEAR		7	7				
OVERCAST		1	1				
<b>Cause of Incident</b>							
VICTIM IN LINE OF FIRE		1	1				
SHOT FOR GAME		7	7				
<b>Place of Incident</b>							
WOODLAND		6	6				
ROAD/HIGHWAY		2	2				
<b>Cover</b>							
DENSE		3	3				
LIGHT		4	4				
<b>Victim Experience</b>							
OVER 10 YEARS		8	8				
<b>Offender Experience</b>							
UNDER 2 YEARS		1	1				
6 - 10 YEARS		2	2				
OVER 10 YEARS		5	5				
<b>Offender Experience Hunting Specie</b>							
NOT REPORTED		8	8				

These 8 incidents represent 4.42% of the 181 incidents reported during the period.

## Hunting Related Shooting Incidents from 1/1/1983 to 12/31/1983 INCIDENTS INVOLVING SPRING TURKEY

**Hunting Related Shooting Incident Reporting**

HRSIS Report: 02

		<i>Non-</i>				<i>Non-</i>	
	<i>Fatal</i>	<i>Fatal</i>	<i>Total</i>		<i>Fatal</i>	<i>Fatal</i>	<i>Total</i>
<b><i>Number of Incidents</i></b>				<b><i>Distance Between Victim/Offender Mistaken for Game</i></b>			
**** TOTALS ****		7	7	26 - 75 FEET		3	3
<b><i>Injury Type</i></b>				76 - 150 FEET		2	2
INFLECTED BY OTHERS		7	7	151 - 300 FEET		1	1
<b><i>Sporting Arm Used</i></b>				<b><i>Color Worn by Victim Mistaken for Game</i></b>			
SHOTGUN		7	7	OTHER COLOR		1	1
<b><i>Species Hunted</i></b>				NOT REPORTED		5	5
TURKEY		7	7	<b><i>Victim Position</i></b>			
<b><i>Victim Age</i></b>				WALKING/RUNNING		1	1
21 - 50 YEARS		7	7	SITTING		4	4
<b><i>Offender Age</i></b>				OTHER/UNKNOWN		2	2
21 - 50 YEARS		6	6	<b><i>Victim Was</i></b>			
OVER 50 YEARS		1	1	NOT REPORTED		7	7
<b><i>Light Conditions</i></b>				<b><i>Offender Was</i></b>			
DAWN		1	1	NOT REPORTED		7	7
DAYLIGHT		6	6	<b><i>Gauge</i></b>			
<b><i>Weather Conditions</i></b>				NOT REPORTED		7	7
CLEAR		3	3	<b><i>Shot Size</i></b>			
OVERCAST		3	3	NOT REPORTED		7	7
RAIN		1	1				
<b><i>Cause of Incident</i></b>							
HUNTER SLIPPED &/OR FELL		1	1				
SHOT FOR GAME		6	6				
<b><i>Place of Incident</i></b>							
WOODLAND		5	5				
ROAD/HIGHWAY		2	2				
<b><i>Cover</i></b>							
DENSE		2	2				
LIGHT		4	4				
<b><i>Victim Experience</i></b>							
6 - 10 YEARS		2	2				
OVER 10 YEARS		5	5				
<b><i>Offender Experience</i></b>							
OVER 10 YEARS		7	7				
<b><i>Offender Experience Hunting Specie</i></b>							
NOT REPORTED		7	7				

These 7 incidents represent 3.93% of the 178 incidents reported during the period.

Thursday, December 06, 2001

Page 1 of 1

## Hunting Related Shooting Incidents from 1/1/1984 to 12/31/1984 INCIDENTS INVOLVING SPRING TURKEY

**Hunting Related Shooting Incident Reporting**

HRSIS Report: 02

		<i>Non-</i>				<i>Non-</i>	
	<i>Fatal</i>	<i>Fatal</i>	<i>Total</i>		<i>Fatal</i>	<i>Fatal</i>	<i>Total</i>
<b>Number of Incidents</b>				<b>Distance Between Victim/Offender Mistaken for Game</b>			
**** TOTALS ****	1	5	6	76 - 150 FEET		5	5
<b>Injury Type</b>				<b>Color Worn by Victim Mistaken for Game</b>			
SELF-INFLICTED	1		1	CAMOUFLAGE		3	3
INFLECTED BY OTHERS		5	5	OTHER COLOR		1	1
<b>Sporting Arm Used</b>				NOT REPORTED		1	1
SHOTGUN	1	5	6	<b>Victim Position</b>			
<b>Species Hunted</b>				WALKING/RUNNING	1		1
TURKEY	1	5	6	SITTING		4	4
<b>Victim Age</b>				OTHER/UNKNOWN		1	1
21 - 50 YEARS	1	4	5	<b>Victim Was</b>			
OVER 50 YEARS		1	1	NOT REPORTED	1	5	6
<b>Offender Age</b>				<b>Offender Was</b>			
16 - 20 YEARS		1	1	NOT REPORTED	1	5	6
21 - 50 YEARS	1	2	3	<b>Gauge</b>			
OVER 50 YEARS		2	2	NOT REPORTED	1	5	6
<b>Light Conditions</b>				<b>Shot Size</b>			
DAWN		1	1	NOT REPORTED	1	5	6
DAYLIGHT	1	4	5				
<b>Weather Conditions</b>							
CLEAR		2	2				
OVERCAST	1	2	3				
FOG		1	1				
<b>Cause of Incident</b>							
SPORT ARM DANGEROUS POS	1		1				
SHOT FOR GAME		5	5				
<b>Place of Incident</b>							
WOODLAND	1	5	6				
<b>Cover</b>							
DENSE	1	3	4				
LIGHT		2	2				
<b>Victim Experience</b>							
OVER 10 YEARS	1	5	6				
<b>Offender Experience</b>							
UNDER 2 YEARS		1	1				
6 - 10 YEARS		1	1				
OVER 10 YEARS	1	3	4				
<b>Offender Experience Hunting Specie</b>							
NOT REPORTED	1	5	6				

These 6 incidents represent 4.92% of the 122 incidents reported during the period.

## Hunting Related Shooting Incidents from 1/1/1985 to 12/31/1985

### INCIDENTS INVOLVING SPRING TURKEY

**Hunting Related Shooting Incident Reporting**

HRSIS Report: 02

		<i>Non-</i>				<i>Non-</i>	
	<i>Fatal</i>	<i>Fatal</i>	<i>Total</i>		<i>Fatal</i>	<i>Fatal</i>	<i>Total</i>
<b><i>Number of Incidents</i></b>				<b><i>Distance Between Victim/Offender Mistaken for Game</i></b>			
**** TOTALS ****	2	6	8	26 - 75 FEET	1		1
<b><i>Injury Type</i></b>				76 - 150 FEET		2	2
INFLECTED BY OTHERS	2	6	8	151 - 300 FEET		1	1
<b><i>Sporting Arm Used</i></b>				<b><i>Color Worn by Victim Mistaken for Game</i></b>			
SHOTGUN	2	6	8	CAMOUFLAGE	1	2	3
<b><i>Species Hunted</i></b>				NOT REPORTED		1	1
TURKEY	2	6	8	<b><i>Victim Position</i></b>			
<b><i>Victim Age</i></b>				STANDING		1	1
21 - 50 YEARS	2	6	8	WALKING/RUNNING	1	2	3
<b><i>Offender Age</i></b>				SITTING	1	2	3
21 - 50 YEARS	1	4	5	OTHER/UNKNOWN		1	1
OVER 50 YEARS	1	1	2	<b><i>Victim Was</i></b>			
<b><i>Light Conditions</i></b>				NOT REPORTED	2	6	8
DAWN		1	1	<b><i>Offender Was</i></b>			
DAYLIGHT	2	5	7	NOT REPORTED	2	6	8
<b><i>Weather Conditions</i></b>				<b><i>Gauge</i></b>			
CLEAR	2	5	7	NOT REPORTED	2	6	8
OVERCAST		1	1	<b><i>Shot Size</i></b>			
<b><i>Cause of Incident</i></b>				NOT REPORTED	2	6	8
SPORT ARM DANGEROUS POS		1	1				
STRAY SHOT		1	1				
VICTIM IN LINE OF FIRE	1	1	2				
SHOT FOR GAME	1	3	4				
<b><i>Place of Incident</i></b>							
FIELD		1	1				
WOODLAND	2	5	7				
<b><i>Cover</i></b>							
DENSE	2	4	6				
LIGHT		2	2				
<b><i>Victim Experience</i></b>							
UNDER 2 YEARS	1	1	2				
OVER 10 YEARS	1	5	6				
<b><i>Offender Experience</i></b>							
UNDER 2 YEARS		1	1				
OVER 10 YEARS	2	5	7				
<b><i>Offender Experience Hunting Specie</i></b>							
NOT REPORTED	2	6	8				

These 8 incidents represent 6.25% of the 128 incidents reported during the period.

Thursday, December 06, 2001

Page 1 of 1

## Hunting Related Shooting Incidents from 1/1/1986 to 12/31/1986 INCIDENTS INVOLVING SPRING TURKEY

**Hunting Related Shooting Incident Reporting**

**HRSIS Report: 02**

		<i>Non-</i>				<i>Non-</i>	
	<i>Fatal</i>	<i>Fatal</i>	<i>Total</i>		<i>Fatal</i>	<i>Fatal</i>	<i>Total</i>
<b>Number of Incidents</b>				<b>Offender Experience</b>			
**** TOTALS ****		10	10	UNDER 2 YEARS		1	1
<b>Injury Type</b>				2 - 5 YEARS			
SELF-INFLICTED		1	1	6 - 10 YEARS		1	1
INFLECTED BY OTHERS		9	9	OVER 10 YEARS		7	7
<b>Sporting Arm Used</b>				<b>Offender Experience Hunting Specie</b>			
SHOTGUN		10	10	NOT REPORTED		10	10
<b>Species Hunted</b>				<b>Distance Between Victim/Offender Mistaken for Game</b>			
TURKEY		10	10	76 - 150 FEET		4	4
<b>Victim Age</b>				151 - 300 FEET			
16 - 20 YEARS		1	1	<b>Color Worn by Victim Mistaken for Game</b>			
21 - 50 YEARS		8	8	CAMOUFLAGE		5	5
OVER 50 YEARS		1	1	<b>Victim Position</b>			
<b>Offender Age</b>				STANDING			
12 - 15 YEARS		1	1	WALKING/RUNNING		2	2
16 - 20 YEARS		2	2	SITTING		6	6
21 - 50 YEARS		5	5	OTHER/UNKNOWN		1	1
OVER 50 YEARS		2	2	<b>Victim Was</b>			
<b>Light Conditions</b>				NOT REPORTED			
DAWN		2	2	<b>Offender Was</b>			
DAYLIGHT		8	8	NOT REPORTED		10	10
<b>Weather Conditions</b>				<b>Gauge</b>			
CLEAR		7	7	NOT REPORTED		10	10
OVERCAST		2	2	<b>Shot Size</b>			
FOG		1	1	NOT REPORTED		10	10
<b>Cause of Incident</b>							
SPORT ARM DANGEROUS POS		1	1				
VICTIM IN LINE OF FIRE		3	3				
HUNTER SLIPPED &/OR FELL		1	1				
SHOT FOR GAME		5	5				
<b>Place of Incident</b>							
FIELD		1	1				
WOODLAND		9	9				
<b>Cover</b>							
DENSE		6	6				
LIGHT		3	3				
<b>Victim Experience</b>							
6 - 10 YEARS		1	1				
OVER 10 YEARS		9	9				

**These 10 incidents represent 8% of the 125 incidents reported during the period.**

Thursday, December 06, 2001

Page 1 of 1

## Hunting Related Shooting Incidents from 1/1/1987 to 12/31/1987

### INCIDENTS INVOLVING SPRING TURKEY

**Hunting Related Shooting Incident Reporting**

HRSIS Report: 02

		<i>Non-</i>				<i>Non-</i>	
	<i>Fatal</i>	<i>Fatal</i>	<i>Total</i>		<i>Fatal</i>	<i>Fatal</i>	<i>Total</i>
<b>Number of Incidents</b>				<b>Offender Experience Hunting Specie</b>			
**** TOTALS ****		8	8	NOT REPORTED		8	8
<b>Injury Type</b>				<b>Distance Between Victim/Offender Mistaken for Game</b>			
INFLECTED BY OTHERS		8	8	0 - 25 FEET		1	1
<b>Sporting Arm Used</b>				26 - 75 FEET		1	1
SHOTGUN		8	8	76 - 150 FEET		5	5
<b>Species Hunted</b>				<b>Color Worn by Victim Mistaken for Game</b>			
TURKEY		8	8	CAMOUFLAGE		6	6
<b>Victim Age</b>				OTHER COLOR		1	1
12 - 15 YEARS		1	1	<b>Victim Position</b>			
21 - 50 YEARS		7	7	STANDING		4	4
<b>Offender Age</b>				WALKING/RUNNING		1	1
16 - 20 YEARS		1	1	SITTING		3	3
21 - 50 YEARS		3	3	<b>Victim Was</b>			
OVER 50 YEARS		3	3	NOT REPORTED		8	8
<b>Light Conditions</b>				<b>Offender Was</b>			
DAWN		2	2	NOT REPORTED		8	8
DAYLIGHT		5	5	<b>Gauge</b>			
DUSK		1	1	NOT REPORTED		8	8
<b>Weather Conditions</b>				<b>Shot Size</b>			
CLEAR		6	6	NOT REPORTED		8	8
OVERCAST		2	2				
<b>Cause of Incident</b>							
VICTIM IN LINE OF FIRE		1	1				
SHOT FOR GAME		7	7				
<b>Place of Incident</b>							
FIELD		1	1				
WOODLAND		7	7				
<b>Cover</b>							
DENSE		6	6				
LIGHT		2	2				
<b>Victim Experience</b>							
2 - 5 YEARS		1	1				
6 - 10 YEARS		3	3				
OVER 10 YEARS		4	4				
<b>Offender Experience</b>							
UNDER 2 YEARS		1	1				
6 - 10 YEARS		2	2				
OVER 10 YEARS		5	5				

These 8 incidents represent 6.25% of the 128 incidents reported during the period.



## Hunting Related Shooting Incidents from 1/1/1988 to 12/31/1988 INCIDENTS INVOLVING SPRING TURKEY

**Hunting Related Shooting Incident Reporting**

**HRSIS Report: 02**

		<i>Non-</i>				<i>Non-</i>	
	<i>Fatal</i>	<i>Fatal</i>	<i>Total</i>		<i>Fatal</i>	<i>Fatal</i>	<i>Total</i>
<b><i>Number of Incidents</i></b>				<b><i>Distance Between Victim/Offender Mistaken for Game</i></b>			
**** TOTALS ****		8	8	76 - 150 FEET		3	3
<b><i>Injury Type</i></b>				151 - 300 FEET		2	2
INFLECTED BY OTHERS		8	8	<b><i>Color Worn by Victim Mistaken for Game</i></b>			
<b><i>Sporting Arm Used</i></b>				CAMOUFLAGE		5	5
SHOTGUN		8	8	<b><i>Victim Position</i></b>			
<b><i>Species Hunted</i></b>				STANDING		1	1
TURKEY		8	8	WALKING/RUNNING		2	2
<b><i>Victim Age</i></b>				SITTING		4	4
16 - 20 YEARS		1	1	OTHER/UNKNOWN		1	1
21 - 50 YEARS		6	6	<b><i>Victim Was</i></b>			
OVER 50 YEARS		1	1	NOT REPORTED		8	8
<b><i>Offender Age</i></b>				<b><i>Offender Was</i></b>			
21 - 50 YEARS		4	4	NOT REPORTED		8	8
OVER 50 YEARS		2	2	<b><i>Gauge</i></b>			
<b><i>Light Conditions</i></b>				NOT REPORTED		8	8
DAYLIGHT		8	8	<b><i>Shot Size</i></b>			
<b><i>Weather Conditions</i></b>				NOT REPORTED		8	8
CLEAR		4	4				
OVERCAST		3	3				
RAIN		1	1				
<b><i>Cause of Incident</i></b>							
VICTIM IN LINE OF FIRE		3	3				
SHOT FOR GAME		5	5				
<b><i>Place of Incident</i></b>							
FIELD		2	2				
WOODLAND		6	6				
<b><i>Cover</i></b>							
DENSE		4	4				
LIGHT		4	4				
<b><i>Victim Experience</i></b>							
2 - 5 YEARS		1	1				
OVER 10 YEARS		7	7				
<b><i>Offender Experience</i></b>							
UNDER 2 YEARS		2	2				
OVER 10 YEARS		6	6				
<b><i>Offender Experience Hunting Specie</i></b>							
NOT REPORTED		8	8				

These 8 incidents represent 6.11% of the 131 incidents reported during the period.

## Hunting Related Shooting Incidents from 1/1/1989 to 12/31/1989 INCIDENTS INVOLVING SPRING TURKEY

**Hunting Related Shooting Incident Reporting**

HRSIS Report: 02

		<i>Non-</i>				<i>Non-</i>	
	<i>Fatal</i>	<i>Fatal</i>	<i>Total</i>		<i>Fatal</i>	<i>Fatal</i>	<i>Total</i>
<b><i>Number of Incidents</i></b>				<b><i>Color Worn by Victim Mistaken for Game</i></b>			
**** TOTALS ****	1	3	4	CAMOUFLAGE	1	3	4
<b><i>Injury Type</i></b>				<b><i>Victim Position</i></b>			
INFLECTED BY OTHERS	1	3	4	STANDING	1	1	2
<b><i>Sporting Arm Used</i></b>				WALKING/RUNNING		1	1
SHOTGUN		3	3	SITTING		1	1
RIFLE	1		1	<b><i>Victim Was</i></b>			
<b><i>Species Hunted</i></b>				NOT REPORTED	1	3	4
TURKEY	1	3	4	<b><i>Offender Was</i></b>			
<b><i>Victim Age</i></b>				NOT REPORTED	1	3	4
12 - 15 YEARS		1	1	<b><i>Caliber</i></b>			
21 - 50 YEARS	1	1	2	NOT REPORTED	1		1
OVER 50 YEARS		1	1	<b><i>Gauge</i></b>			
<b><i>Offender Age</i></b>				NOT REPORTED		3	3
21 - 50 YEARS	1	3	4	<b><i>Shot Size</i></b>			
<b><i>Light Conditions</i></b>				NOT REPORTED		3	3
DAYLIGHT	1	3	4				
<b><i>Weather Conditions</i></b>							
CLEAR	1	2	3				
OVERCAST		1	1				
<b><i>Cause of Incident</i></b>							
SHOT FOR GAME	1	3	4				
<b><i>Place of Incident</i></b>							
WOODLAND	1	3	4				
<b><i>Cover</i></b>							
LIGHT	1	3	4				
<b><i>Victim Experience</i></b>							
UNDER 2 YEARS	1		1				
2 - 5 YEARS		1	1				
OVER 10 YEARS		2	2				
<b><i>Offender Experience</i></b>							
6 - 10 YEARS		1	1				
OVER 10 YEARS	1	2	3				
<b><i>Offender Experience Hunting Specie</i></b>							
NOT REPORTED	1	3	4				
<b><i>Distance Between Victim/Offender Mistaken for Game</i></b>							
76 - 150 FEET		2	2				
151 - 300 FEET	1	1	2				

These 4 incidents represent 3.51% of the 114 incidents reported during the period.

Thursday, December 06, 2001

Page 1 of 1

## Hunting Related Shooting Incidents from 1/1/1990 to 12/31/1990

### INCIDENTS INVOLVING SPRING TURKEY

**Hunting Related Shooting Incident Reporting**

**HRSIS Report: 02**

		<i>Non-</i>				<i>Non-</i>	
	<i>Fatal</i>	<i>Fatal</i>	<i>Total</i>		<i>Fatal</i>	<i>Fatal</i>	<i>Total</i>
<b><i>Number of Incidents</i></b>				<b><i>Offender Experience Hunting Specie</i></b>			
**** TOTALS ****	1	7	8	NOT REPORTED	1	7	8
<b><i>Injury Type</i></b>				<b><i>Distance Between Victim/Offender Mistaken for Game</i></b>			
INFLECTED BY OTHERS	1	7	8	76 - 150 FEET	1	4	5
<b><i>Sporting Arm Used</i></b>				151 - 300 FEET		2	2
SHOTGUN	1	7	8	<b><i>Color Worn by Victim Mistaken for Game</i></b>			
<b><i>Species Hunted</i></b>				CAMOUFLAGE	1	6	7
TURKEY	1	7	8	<b><i>Victim Position</i></b>			
<b><i>Victim Age</i></b>				STANDING		3	3
12 - 15 YEARS		1	1	WALKING/RUNNING	1	2	3
21 - 50 YEARS	1	4	5	SITTING		1	1
OVER 50 YEARS		2	2	OTHER/UNKNOWN		1	1
<b><i>Offender Age</i></b>				<b><i>Victim Was</i></b>			
16 - 20 YEARS		2	2	NOT REPORTED	1	7	8
21 - 50 YEARS	1	2	3	<b><i>Offender Was</i></b>			
OVER 50 YEARS		2	2	NOT REPORTED	1	7	8
<b><i>Light Conditions</i></b>				<b><i>Gauge</i></b>			
DAWN		1	1	NOT REPORTED	1	7	8
DAYLIGHT	1	6	7	<b><i>Shot Size</i></b>			
<b><i>Weather Conditions</i></b>				NOT REPORTED	1	7	8
CLEAR	1	2	3				
OVERCAST		3	3				
FOG		1	1				
RAIN		1	1				
<b><i>Cause of Incident</i></b>							
VICTIM IN LINE OF FIRE		1	1				
SHOT FOR GAME	1	6	7				
<b><i>Place of Incident</i></b>							
WOODLAND	1	7	8				
<b><i>Cover</i></b>							
DENSE		4	4				
LIGHT	1	3	4				
<b><i>Victim Experience</i></b>							
2 - 5 YEARS		1	1				
OVER 10 YEARS	1	6	7				
<b><i>Offender Experience</i></b>							
UNDER 2 YEARS		1	1				
2 - 5 YEARS		2	2				
OVER 10 YEARS	1	4	5				

These 8 incidents represent 6.61% of the 121 incidents reported during the period.

Thursday, December 06, 2001

Page 1 of 1

## Hunting Related Shooting Incidents from 1/1/1991 to 12/31/1991 INCIDENTS INVOLVING SPRING TURKEY

**Hunting Related Shooting Incident Reporting**

**HRSIS Report: 02**

		<i>Non-</i>				<i>Non-</i>	
	<i>Fatal</i>	<i>Fatal</i>	<i>Total</i>		<i>Fatal</i>	<i>Fatal</i>	<i>Total</i>
<b><i>Number of Incidents</i></b>				<b><i>Offender Experience Hunting Specie</i></b>			
**** TOTALS ****		16	16	NOT REPORTED		16	16
<b><i>Injury Type</i></b>				<b><i>Distance Between Victim/Offender Mistaken for Game</i></b>			
INFLECTED BY OTHERS		16	16	76 - 150 FEET		12	12
<b><i>Sporting Arm Used</i></b>				151 - 300 FEET		4	4
SHOTGUN		16	16	<b><i>Color Worn by Victim Mistaken for Game</i></b>			
<b><i>Species Hunted</i></b>				CAMOUFLAGE		13	13
TURKEY		16	16	OTHER COLOR		3	3
<b><i>Victim Age</i></b>				<b><i>Victim Position</i></b>			
12 - 15 YEARS		3	3	STANDING		5	5
16 - 20 YEARS		1	1	WALKING/RUNNING		5	5
21 - 50 YEARS		11	11	SITTING		6	6
OVER 50 YEARS		1	1	<b><i>Victim Was</i></b>			
<b><i>Offender Age</i></b>				NOT REPORTED		16	16
12 - 15 YEARS		1	1	<b><i>Offender Was</i></b>			
16 - 20 YEARS		2	2	NOT REPORTED		16	16
21 - 50 YEARS		9	9	<b><i>Gauge</i></b>			
OVER 50 YEARS		2	2	NOT REPORTED		16	16
<b><i>Light Conditions</i></b>				<b><i>Shot Size</i></b>			
DAWN		3	3	NOT REPORTED		16	16
DAYLIGHT		13	13	NOT REPORTED		16	16
<b><i>Weather Conditions</i></b>							
CLEAR		14	14				
OVERCAST		2	2				
<b><i>Cause of Incident</i></b>							
SHOT FOR GAME		16	16				
<b><i>Place of Incident</i></b>							
FIELD		1	1				
WOODLAND		15	15				
<b><i>Cover</i></b>							
DENSE		9	9				
LIGHT		7	7				
<b><i>Victim Experience</i></b>							
UNDER 2 YEARS		2	2				
2 - 5 YEARS		2	2				
OVER 10 YEARS		12	12				
<b><i>Offender Experience</i></b>							
UNDER 2 YEARS		3	3				
6 - 10 YEARS		2	2				
OVER 10 YEARS		11	11				

These 16 incidents represent 11.76% of the 136 incidents reported during the period.

Friday, August 16, 2002

Page 1 of 1

## Hunting Related Shooting Incidents from 1/1/1992 to 12/31/1992 INCIDENTS INVOLVING SPRING TURKEY

**Hunting Related Shooting Incident Reporting**

**HRSIS Report: 02**

		<i>Non-</i>			<i>Non-</i>	
	<i>Fatal</i>	<i>Fatal</i>	<i>Total</i>		<i>Fatal</i>	<i>Fatal</i>
<i>Number of Incidents</i>				<i>Distance Between Victim/Offender Mistaken for Game</i>		
***** TOTALS *****		8	8	26 - 75 FEET	1	1
<i>Injury Type</i>				76 - 150 FEET	2	2
INFLECTED BY OTHERS		8	8	151 - 300 FEET	2	2
<i>Sporting Arm Used</i>				<i>Color Worn by Victim Mistaken for Game</i>		
SHOTGUN		8	8	CAMOUFLAGE	5	5
<i>Species Hunted</i>				<i>Victim Position</i>		
TURKEY		8	8	STANDING	2	2
<i>Victim Age</i>				WALKING/RUNNING	2	2
21 - 50 YEARS		8	8	SITTING	3	3
<i>Offender Age</i>				OTHER/UNKNOWN	1	1
21 - 50 YEARS		4	4	<i>Victim Was</i>		
OVER 50 YEARS		2	2	HUNTING	8	8
<i>Light Conditions</i>				<i>Offender Was</i>		
DAWN		3	3	HUNTING	8	8
DAYLIGHT		5	5	<i>Gauge</i>		
<i>Weather Conditions</i>				10	1	1
CLEAR		6	6	12	5	5
OVERCAST		2	2	20	1	1
<i>Cause of Incident</i>				NOT REPORTED	1	1
RICOCHET		1	1	<i>Shot Size</i>		
STRAY SHOT		2	2	2	2	2
SHOT FOR GAME		5	5	4	1	1
<i>Place of Incident</i>				6	1	1
WOODLAND		8	8	7.5	1	1
<i>Cover</i>				NOT REPORTED	3	3
DENSE		4	4			
LIGHT		4	4			
<i>Victim Experience</i>						
OVER 10 YEARS		8	8			
<i>Offender Experience</i>						
UNDER 2 YEARS		2	2			
6 - 10 YEARS		1	1			
OVER 10 YEARS		5	5			
<i>Offender Experience Hunting Specie</i>						
NOT REPORTED		8	8			

These 8 incidents represent 8% of the 100 incidents reported during the period.

Thursday, December 06, 2001

Page 1 of 1

## Hunting Related Shooting Incidents from 1/1/1993 to 12/31/1993

### INCIDENTS INVOLVING SPRING TURKEY

**Hunting Related Shooting Incident Reporting**

HRSIS Report: 02

		<i>Non-</i>			<i>Non-</i>		
	<i>Fatal</i>	<i>Fatal</i>	<i>Total</i>		<i>Fatal</i>	<i>Fatal</i>	<i>Total</i>
<b><i>Number of Incidents</i></b>				<b><i>Color Worn by Victim Mistaken for Game</i></b>			
**** TOTALS ****		5	5	CAMOUFLAGE		5	5
<b><i>Injury Type</i></b>				<b><i>Victim Position</i></b>			
INFLECTED BY OTHERS		5	5	WALKING/RUNNING		2	2
<b><i>Sporting Arm Used</i></b>				SITTING		3	3
SHOTGUN		5	5	<b><i>Victim Was</i></b>			
<b><i>Species Hunted</i></b>				HUNTING		5	5
TURKEY		5	5	<b><i>Offender Was</i></b>			
<b><i>Victim Age</i></b>				HUNTING		5	5
21 - 50 YEARS		5	5	<b><i>Gauge</i></b>			
<b><i>Offender Age</i></b>				12		3	3
21 - 50 YEARS		1	1	UNKNOWN		2	2
OVER 50 YEARS		2	2	<b><i>Shot Size</i></b>			
NOT REPORTED		2	2	4		2	2
<b><i>Light Conditions</i></b>				7.5		1	1
DAWN		1	1	UNKNOWN		2	2
DAYLIGHT		4	4				
<b><i>Weather Conditions</i></b>							
CLEAR		3	3				
OVERCAST		2	2				
<b><i>Cause of Incident</i></b>							
SHOT FOR GAME		5	5				
<b><i>Place of Incident</i></b>							
WOODLAND		5	5				
<b><i>Cover</i></b>							
DENSE		1	1				
LIGHT		4	4				
<b><i>Victim Experience</i></b>							
OVER 10 YEARS		5	5				
<b><i>Offender Experience</i></b>							
NOT REPORTED		2	2				
OVER 10 YEARS		3	3				
<b><i>Offender Experience Hunting Specie</i></b>							
NOT REPORTED		5	5				
<b><i>Distance Between Victim/Offender Mistaken for Game</i></b>							
26 - 75 FEET		1	1				
76 - 150 FEET		2	2				
151 - 300 FEET		2	2				

These 5 incidents represent 5.88% of the 85 incidents reported during the period.

## Hunting Related Shooting Incidents from 1/1/1994 to 12/31/1994 INCIDENTS INVOLVING SPRING TURKEY

**Hunting Related Shooting Incident Reporting**

HRSIS Report: 02

		<i>Non-</i>				<i>Non-</i>	
	<i>Fatal</i>	<i>Fatal</i>	<i>Total</i>		<i>Fatal</i>	<i>Fatal</i>	<i>Total</i>
<b>Number of Incidents</b>				<b>Distance Between Victim/Offender Mistaken for Game</b>			
**** TOTALS ****	1	8	9	26 - 75 FEET	1		1
<b>Injury Type</b>				76 - 150 FEET		2	2
INFLECTED BY OTHERS	1	8	9	151 - 300 FEET		3	3
<b>Sporting Arm Used</b>				<b>Color Worn by Victim Mistaken for Game</b>			
SHOTGUN	1	8	9	FL. ORANGE		1	1
<b>Species Hunted</b>				CAMOUFLAGE	1	4	5
TURKEY	1	8	9	<b>Fluorescent Orange Visible to Offender?</b>			
<b>Victim Age</b>				NO		1	1
16 - 20 YEARS		2	2	<b>Victim Position</b>			
21 - 50 YEARS	1	4	5	STANDING		3	3
OVER 50 YEARS		2	2	WALKING/RUNNING	1	2	3
<b>Offender Age</b>				SITTING		1	1
16 - 20 YEARS		1	1	OTHER/UNKNOWN		2	2
21 - 50 YEARS	1	4	5	<b>Victim Was</b>			
NOT REPORTED		3	3	HUNTING	1	8	9
<b>Light Conditions</b>				<b>Offender Was</b>			
DAYLIGHT	1	8	9	HUNTING		5	6
<b>Weather Conditions</b>				UNKNOWN	1	3	3
CLEAR	1	7	8	<b>Gauge</b>			
OVERCAST		1	1	10		1	1
<b>Cause of Incident</b>				12	1	4	5
STRAY SHOT		2	2	UNKNOWN		3	3
VICTIM IN LINE OF FIRE		1	1	<b>Shot Size</b>			
SHOT FOR GAME	1	5	6	4		2	2
<b>Place of Incident</b>				6	1	4	5
WOODLAND	1	8	9	UNKNOWN		2	2
<b>Cover</b>				<b>Victim Experience</b>			
DENSE	1	6	7	2 - 5 YEARS		1	1
LIGHT		2	2	6 - 10 YEARS		1	1
<b>Offender Experience</b>				OVER 10 YEARS	1	6	7
6 - 10 YEARS		1	1	<b>Offender Experience</b>			
NOT REPORTED		3	3	6 - 10 YEARS		1	1
OVER 10 YEARS	1	4	5	NOT REPORTED		3	3
<b>Offender Experience Hunting Specie</b>				OVER 10 YEARS	1	4	5
NOT REPORTED	1	8	9				

These 9 incidents represent 8.65% of the 104 incidents reported during the period.

## Hunting Related Shooting Incidents from 1/1/1995 to 12/31/1995 INCIDENTS INVOLVING SPRING TURKEY

**Hunting Related Shooting Incident Reporting**

**HRSIS Report: 02**

		<i>Non-</i>				<i>Non-</i>	
	<i>Fatal</i>	<i>Fatal</i>	<i>Total</i>		<i>Fatal</i>	<i>Fatal</i>	<i>Total</i>
<b><i>Number of Incidents</i></b>				<b><i>Offender Experience</i></b>			
**** TOTALS ****		16	16	OVER 10 YEARS		10	10
<b><i>Injury Type</i></b>				NOT REPORTED		6	6
INFLECTED BY OTHERS		16	16	<b><i>Offender Experience Hunting Specie</i></b>			
<b><i>Sporting Arm Used</i></b>				NOT REPORTED		16	16
SHOTGUN		16	16	<b><i>Distance Between Victim/Offender Mistaken for Game</i></b>			
<b><i>Species Hunted</i></b>				76 - 150 FEET		5	5
TURKEY		16	16	151 - 300 FEET		3	3
<b><i>Victim Age</i></b>				<b><i>Color Worn by Victim Mistaken for Game</i></b>			
16 - 20 YEARS		1	1	FL. ORANGE		1	1
21 - 50 YEARS		10	10	CAMOUFLAGE		7	7
OVER 50 YEARS		5	5	<b><i>Fluorescent Orange Visible to Offender?</i></b>			
<b><i>Offender Age</i></b>				NO		1	1
21 - 50 YEARS		8	8	<b><i>Victim Position</i></b>			
OVER 50 YEARS		2	2	STANDING		3	3
NOT REPORTED		6	6	WALKING/RUNNING		2	2
<b><i>Light Conditions</i></b>				SITTING		10	10
DAWN		1	1	OTHER/UNKNOWN		1	1
DAYLIGHT		15	15	<b><i>Victim Was</i></b>			
<b><i>Weather Conditions</i></b>				HUNTING		16	16
CLEAR		13	13	<b><i>Offender Was</i></b>			
OVERCAST		1	1	HUNTING		16	16
FOG		1	1	<b><i>Gauge</i></b>			
RAIN		1	1	12		11	11
<b><i>Cause of Incident</i></b>				20		1	1
STRAY SHOT		1	1	UNKNOWN		4	4
VICTIM IN LINE OF FIRE		5	5	<b><i>Shot Size</i></b>			
SHOT FOR GAME		8	8	4		7	7
OTHER		2	2	6		3	3
<b><i>Place of Incident</i></b>				7.5		1	1
WOODLAND		15	15	OTHER		1	1
ROAD/HIGHWAY		1	1	UNKNOWN		4	4
<b><i>Cover</i></b>							
DENSE		7	7				
LIGHT		9	9				
<b><i>Victim Experience</i></b>							
6 - 10 YEARS		2	2				
OVER 10 YEARS		14	14				

These 16 incidents represent 16.49% of the 97 incidents reported during the period.



## Hunting Related Shooting Incidents from 1/1/1996 to 12/31/1996

### INCIDENTS INVOLVING SPRING TURKEY

**Hunting Related Shooting Incident Reporting**

**HRSIS Report: 02**

		<i>Non-</i>				<i>Non-</i>	
	<i>Fatal</i>	<i>Fatal</i>	<i>Total</i>		<i>Fatal</i>	<i>Fatal</i>	<i>Total</i>
<b>Number of Incidents</b>				<b>Offender Experience</b>			
**** TOTALS ****		12	12	6 - 10 YEARS		1	1
<b>Injury Type</b>				OVER 10 YEARS			
INFLECTED BY OTHERS		12	12	NOT REPORTED		10	10
<b>Sporting Arm Used</b>				<b>Offender Experience Hunting Specie</b>			
SHOTGUN		12	12	2 - 5 YEARS		5	5
<b>Species Hunted</b>				6 - 10 YEARS			
TURKEY		12	12	OVER 10 YEARS		1	1
<b>Victim Age</b>				NOT REPORTED			
12 - 15 YEARS		1	1	0 - 25 FEET		5	5
21 - 50 YEARS		7	7	76 - 150 FEET		1	1
OVER 50 YEARS		4	4	151 - 300 FEET		3	3
<b>Offender Age</b>				<b>Distance Between Victim/Offender Mistaken for Game</b>			
16 - 20 YEARS		1	1	CAMOUFLAGE		10	10
21 - 50 YEARS		9	9	<b>Color Worn by Victim Mistaken for Game</b>			
OVER 50 YEARS		1	1	STANDING		3	3
NOT REPORTED		1	1	WALKING/RUNNING		1	1
<b>Light Conditions</b>				SITTING			
DAWN		2	2	<b>Victim Was</b>			
DAYLIGHT		10	10	HUNTING		12	12
<b>Weather Conditions</b>				<b>Offender Was</b>			
CLEAR		5	5	HUNTING		12	12
OVERCAST		4	4	<b>Gauge</b>			
FOG		2	2	10		3	3
RAIN		1	1	12		9	9
<b>Cause of Incident</b>				<b>Shot Size</b>			
VICTIM IN LINE OF FIRE		1	1	4		5	5
HUNTER SLIPPED &/OR FELL		1	1	5		1	1
SHOT FOR GAME		10	10	6		4	4
<b>Place of Incident</b>				OTHER			
FIELD		1	1			2	2
WOODLAND		11	11	<b>Cover</b>			
<b>Cover</b>				DENSE			
DENSE		7	7	LIGHT			
LIGHT		5	5	<b>Victim Experience</b>			
<b>Victim Experience</b>				UNDER 2 YEARS			
UNDER 2 YEARS		1	1	6 - 10 YEARS			
6 - 10 YEARS		2	2	OVER 10 YEARS			
OVER 10 YEARS		9	9				

These 12 incidents represent 14.12% of the 85 incidents reported during the period.

## Hunting Related Shooting Incidents from 1/1/1997 to 12/31/1997 INCIDENTS INVOLVING SPRING TURKEY

**Hunting Related Shooting Incident Reporting**

**HRSIS Report: 02**

		<i>Non-</i>				<i>Non-</i>	
	<i>Fatal</i>	<i>Fatal</i>	<i>Total</i>		<i>Fatal</i>	<i>Fatal</i>	<i>Total</i>
<b><i>Number of Incidents</i></b>				<b><i>Offender Experience</i></b>			
**** TOTALS ****		12	12	2 - 5 YEARS		1	1
<b><i>Injury Type</i></b>				6 - 10 YEARS		2	2
SELF-INFLICTED		1	1	NOT REPORTED		2	2
INFLECTED BY OTHERS		11	11	OVER 10 YEARS		7	7
<b><i>Sporting Arm Used</i></b>				<b><i>Offender Experience Hunting Specie</i></b>			
SHOTGUN		12	12	2 - 5 YEARS		2	2
<b><i>Species Hunted</i></b>				6 - 10 YEARS		4	4
TURKEY		12	12	OVER 10 YEARS		4	4
<b><i>Victim Age</i></b>				NOT REPORTED		2	2
16 - 20 YEARS		2	2	<b><i>Distance Between Victim/Offender Mistaken for Game</i></b>			
21 - 50 YEARS		8	8	26 - 75 FEET		1	1
OVER 50 YEARS		2	2	76 - 150 FEET		4	4
<b><i>Offender Age</i></b>				151 - 300 FEET		2	2
16 - 20 YEARS		2	2	<b><i>Color Worn by Victim Mistaken for Game</i></b>			
21 - 50 YEARS		4	4	FL. ORANGE		4	4
OVER 50 YEARS		4	4	CAMOUFLAGE		3	3
NOT REPORTED		2	2	OTHER COLOR		1	1
<b><i>Light Conditions</i></b>				<b><i>Fluorescent Orange Visible to Offender?</i></b>			
DAWN		3	3	YES		4	4
DAYLIGHT		9	9	<b><i>Victim Position</i></b>			
<b><i>Weather Conditions</i></b>				STANDING		3	3
CLEAR		5	5	WALKING/RUNNING		6	6
OVERCAST		4	4	SITTING		3	3
RAIN		3	3	<b><i>Victim Was</i></b>			
<b><i>Cause of Incident</i></b>				HUNTING		11	11
UNINTENTIONAL DISCHARGE		1	1	OTHER		1	1
VICTIM IN LINE OF FIRE		3	3	<b><i>Offender Was</i></b>			
SHOT FOR GAME		8	8	HUNTING		12	12
<b><i>Place of Incident</i></b>				<b><i>Gauge</i></b>			
WOODLAND		12	12	10		1	1
<b><i>Cover</i></b>				12		8	8
DENSE		6	6	20		1	1
LIGHT		6	6	UNKNOWN		2	2
<b><i>Victim Experience</i></b>				<b><i>Shot Size</i></b>			
2 - 5 YEARS		2	2	4		3	3
6 - 10 YEARS		1	1	5		2	2
OVER 10 YEARS		9	9	6		5	5
				UNKNOWN		2	2

These 12 incidents represent 13.04% of the 92 incidents reported during the period.

## Hunting Related Shooting Incidents from 1/1/1998 to 12/31/1998

### INCIDENTS INVOLVING SPRING TURKEY

**Hunting Related Shooting Incident Reporting**

HRSIS Report: 02

		<i>Non-</i>				<i>Non-</i>	
	<i>Fatal</i>	<i>Fatal</i>	<i>Total</i>		<i>Fatal</i>	<i>Fatal</i>	<i>Total</i>
<b>Number of Incidents</b>				<b>Distance Between Victim/Offender Mistaken for Game</b>			
**** TOTALS ****		10	10	26 - 75 FEET		1	1
<b>Injury Type</b>				76 - 150 FEET		8	8
INFLECTED BY OTHERS		10	10	151 - 300 FEET		1	1
<b>Sporting Arm Used</b>				<b>Color Worn by Victim Mistaken for Game</b>			
SHOTGUN		10	10	FL. ORANGE		1	1
<b>Species Hunted</b>				CAMOUFLAGE		9	9
TURKEY		10	10	<b>Fluorescent Orange Visible to Offender?</b>			
<b>Victim Age</b>				YES		1	1
16 - 20 YEARS		1	1	<b>Victim Position</b>			
21 - 50 YEARS		7	7	STANDING		3	3
OVER 50 YEARS		2	2	WALKING/RUNNING		2	2
<b>Offender Age</b>				SITTING		5	5
16 - 20 YEARS		1	1	<b>Victim Was</b>			
21 - 50 YEARS		7	7	HUNTING		10	10
OVER 50 YEARS		2	2	<b>Offender Was</b>			
<b>Light Conditions</b>				HUNTING		10	10
DAWN		2	2	<b>Gauge</b>			
DAYLIGHT		8	8	10		1	1
<b>Weather Conditions</b>				12		8	8
CLEAR		5	5	16		1	1
RAIN		5	5	<b>Shot Size</b>			
<b>Cause of Incident</b>				2		1	1
SHOT FOR GAME		10	10	4		5	5
<b>Place of Incident</b>				6		4	4
FIELD		1	1				
WOODLAND		9	9				
<b>Cover</b>							
DENSE		5	5				
LIGHT		5	5				
<b>Victim Experience</b>							
2 - 5 YEARS		2	2				
OVER 10 YEARS		8	8				
<b>Offender Experience</b>							
6 - 10 YEARS		1	1				
OVER 10 YEARS		9	9				
<b>Offender Experience Hunting Specie</b>							
UNDER 2 YEARS		1	1				
6 - 10 YEARS		4	4				
OVER 10 YEARS		5	5				

These 10 incidents represent 10.99% of the 91 incidents reported during the period.

## Hunting Related Shooting Incidents from 1/1/1999 to 12/31/1999

### INCIDENTS INVOLVING SPRING TURKEY

**Hunting Related Shooting Incident Reporting**

**HRSIS Report: 02**

		<i>Non-</i>				<i>Non-</i>	
	<i>Fatal</i>	<i>Fatal</i>	<i>Total</i>		<i>Fatal</i>	<i>Fatal</i>	<i>Total</i>
<b>Number of Incidents</b>				<b>Offender Experience</b>			
**** TOTALS ****		14	14	2 - 5 YEARS		1	1
<b>Injury Type</b>				6 - 10 YEARS		1	1
INFLECTED BY OTHERS		14	14	NOT REPORTED		2	2
<b>Sporting Arm Used</b>				OVER 10 YEARS		10	10
SHOTGUN		14	14	<b>Offender Experience Hunting Specie</b>			
<b>Species Hunted</b>				UNDER 2 YEARS		3	3
TURKEY		14	14	2 - 5 YEARS		2	2
<b>Victim Age</b>				6 - 10 YEARS		3	3
12 - 15 YEARS		1	1	OVER 10 YEARS		4	4
21 - 50 YEARS		13	13	NOT REPORTED		2	2
<b>Offender Age</b>				<b>Distance Between Victim/Offender Mistaken for Game</b>			
16 - 20 YEARS		1	1	26 - 75 FEET		1	1
21 - 50 YEARS		9	9	76 - 150 FEET		4	4
OVER 50 YEARS		2	2	151 - 300 FEET		3	3
NOT REPORTED		2	2	<b>Color Worn by Victim Mistaken for Game</b>			
<b>Light Conditions</b>				FL. ORANGE		4	4
DAWN		3	3	CAMOUFLAGE		3	3
DAYLIGHT		11	11	OTHER COLOR		1	1
<b>Weather Conditions</b>				<b>Fluorescent Orange Visible to Offender?</b>			
CLEAR		11	11	YES		4	4
OVERCAST		3	3	<b>Victim Position</b>			
<b>Cause of Incident</b>				STANDING		1	1
RICOCHET		1	1	WALKING/RUNNING		3	3
VICTIM IN LINE OF FIRE		4	4	SITTING		9	9
SHOT FOR GAME		8	8	OTHER/UNKNOWN		1	1
OTHER		1	1	<b>Victim Was</b>			
<b>Place of Incident</b>				HUNTING		13	13
FIELD		2	2	OTHER		1	1
WOODLAND		12	12	<b>Offender Was</b>			
<b>Cover</b>				HUNTING		14	14
DENSE		5	5	<b>Gauge</b>			
LIGHT		9	9	12		12	12
<b>Victim Experience</b>				16		1	1
UNDER 2 YEARS		2	2	UNKNOWN		1	1
OVER 10 YEARS		12	12	<b>Shot Size</b>			
				4		8	8
				5		1	1
				6		4	4
				T		1	1

These 14 incidents represent 16.87% of the 83 incidents reported during the period.











## Hunting Related Shooting Incidents from 01/01/2004 to 12/31/2004

### INCIDENTS INVOLVING SPRING TURKEY

**Hunting Related Shooting Incident Reporting**

**HRSIS Report: 02**

		<i>Non-</i>				<i>Non-</i>	
	<i>Fatal</i>	<i>Fatal</i>	<i>Total</i>		<i>Fatal</i>	<i>Fatal</i>	<i>Total</i>
<b><i>Number of Incidents</i></b>				<b><i>Offender Experience Hunting Specie</i></b>			
**** TOTALS ****		9	9	UNDER 2 YEARS		1	1
<b><i>Injury Type</i></b>				2 - 5 YEARS		3	3
INFLECTED BY OTHERS		9	9	6 - 10 YEARS		1	1
<b><i>Sporting Arm Used</i></b>				OVER 10 YEARS		4	4
SHOTGUN		9	9	<b><i>Distance Between Victim/Offender Mistaken for Game</i></b>			
<b><i>Species Hunted</i></b>				26 - 75 FEET		4	4
TURKEY		9	9	76 - 150 FEET		3	3
<b><i>Victim Age</i></b>				151 - 300 FEET		2	2
16 - 20 YEARS		1	1	<b><i>Color Worn by Victim Mistaken for Game</i></b>			
21 - 50 YEARS		7	7	FL. ORANGE		3	3
OVER 50 YEARS		1	1	CAMOUFLAGE		6	6
<b><i>Offender Age</i></b>				<b><i>Fluorescent Orange Visible to Offender?</i></b>			
12 - 15 YEARS		1	1	YES		1	1
16 - 20 YEARS		1	1	NO		2	2
21 - 50 YEARS		4	4	<b><i>Victim Position</i></b>			
OVER 50 YEARS		3	3	WALKING/RUNNING		3	3
<b><i>Light Conditions</i></b>				SITTING		6	6
DAWN		3	3	<b><i>Victim Was</i></b>			
DAYLIGHT		6	6	HUNTING		9	9
<b><i>Weather Conditions</i></b>				<b><i>Offender Was</i></b>			
CLEAR		6	6	HUNTING		9	9
OVERCAST		2	2	<b><i>Gauge</i></b>			
FOG		1	1	12		6	6
<b><i>Cause of Incident</i></b>				16		1	1
SHOT FOR GAME		9	9	20		2	2
<b><i>Place of Incident</i></b>				<b><i>Shot Size</i></b>			
WOODLAND		9	9	4		3	3
<b><i>Cover</i></b>				5		1	1
DENSE		2	2	6		5	5
LIGHT		7	7	<b><i>Victim Experience</i></b>			
<b><i>Victim Experience</i></b>				2 - 5 YEARS		1	1
2 - 5 YEARS		1	1	OVER 10 YEARS		8	8
OVER 10 YEARS		8	8	<b><i>Offender Experience</i></b>			
<b><i>Offender Experience</i></b>				2 - 5 YEARS		2	2
2 - 5 YEARS		2	2	6 - 10 YEARS		1	1
6 - 10 YEARS		1	1	OVER 10 YEARS		6	6
OVER 10 YEARS		6	6				

These 9 incidents represent 16.07% of the 56 incidents reported during the period.

## Hunting Related Shooting Incidents from 01/01/2005 to 12/31/2005

### INCIDENTS INVOLVING SPRING TURKEY

**Hunting Related Shooting Incident Reporting**

HRSIS Report: 02

		<i>Non-</i>				<i>Non-</i>	
	<i>Fatal</i>	<i>Fatal</i>	<i>Total</i>		<i>Fatal</i>	<i>Fatal</i>	<i>Total</i>
<b>Number of Incidents</b>				<b>Offender Experience Hunting Specie</b>			
**** TOTALS ****		9	9	2 - 5 YEARS		1	1
<b>Injury Type</b>				6 - 10 YEARS		2	2
SELF-INFLICTED		1	1	OVER 10 YEARS		3	3
INFLECTED BY OTHERS		8	8	NOT REPORTED		3	3
<b>Sporting Arm Used</b>				<b>Distance Between Victim/Offender Mistaken for Game</b>			
SHOTGUN		9	9	26 - 75 FEET		2	2
<b>Species Hunted</b>				76 - 150 FEET		5	5
TURKEY		9	9	<b>Color Worn by Victim Mistaken for Game</b>			
<b>Victim Age</b>				FL. ORANGE		1	1
21 - 50 YEARS		6	6	CAMOUFLAGE		6	6
OVER 50 YEARS		3	3	<b>Fluorescent Orange Visible to Offender?</b>			
<b>Offender Age</b>				YES		1	1
21 - 50 YEARS		5	5	<b>Victim Position</b>			
OVER 50 YEARS		1	1	STANDING		2	2
NOT REPORTED		3	3	WALKING/RUNNING		2	2
<b>Light Conditions</b>				SITTING		4	4
DAWN		3	3	OTHER/UNKNOWN		1	1
DAYLIGHT		6	6	<b>Victim Was</b>			
<b>Weather Conditions</b>				HUNTING		9	9
CLEAR		6	6	<b>Offender Was</b>			
OVERCAST		1	1	HUNTING		9	9
RAIN		2	2	<b>Gauge</b>			
<b>Cause of Incident</b>				12		6	6
UNINTENTIONAL DISCHARGE		1	1	20		1	1
RICOCHET		1	1	UNKNOWN		2	2
SHOT FOR GAME		7	7	<b>Shot Size</b>			
<b>Place of Incident</b>				5		4	4
WOODLAND		9	9	6		1	1
<b>Cover</b>				BB		1	1
DENSE		5	5	OTHER		1	1
LIGHT		4	4	UNKNOWN		2	2
<b>Victim Experience</b>							
OVER 10 YEARS		9	9				
<b>Offender Experience</b>							
OVER 10 YEARS		6	6				
NOT REPORTED		3	3				

These 9 incidents represent 19.15% of the 47 incidents reported during the period.

# Hunting Related Shooting Incidents from 01/01/2006 to 12/31/2006

## INCIDENTS INVOLVING S TURKEY

Hunting Related Shooting Incident Reporting System

HRSIS Report: 02

	<i>Non-Fatal</i>		<i>Total</i>		<i>Non-Fatal</i>		<i>Total</i>
<b>Number of Incidents</b>				<b>Distance Between Victim/Offender Mistaken for Game</b>			
***** TOTALS *****		5	5	76 - 150 FEET		3	3
<b>Injury Type</b>				<b>Color Worn by Victim Mistaken for Game</b>			
SELF-INFLICTED		1	1	CAMOUFLAGE		3	3
INFLECTED BY OTHERS		4	4	<b>Victim Position</b>			
<b>Sporting Arm Used</b>				WALKING/RUNNING		1	1
SHOTGUN		5	5	SITTING		3	3
<b>Species Hunted</b>				OTHER/UNKNOWN		1	1
TURKEY		5	5	<b>Victim Was</b>			
<b>Victim Age</b>				HUNTING		5	5
21 - 50 YEARS		2	2	<b>Offender Was</b>			
OVER 50 YEARS		3	3	HUNTING		5	5
<b>Offender Age</b>				<b>Gauge</b>			
21 - 50 YEARS		4	4	10		1	1
OVER 50 YEARS		1	1	12		4	4
<b>Light Conditions</b>				<b>Shot Size</b>			
DAWN		3	3	4		1	1
DAYLIGHT		2	2	5		4	4
<b>Weather Conditions</b>							
CLEAR		2	2				
OVERCAST		3	3				
<b>Cause of Incident</b>							
VICTIM IN LINE OF FIRE		1	1				
SHOT FOR GAME		3	3				
SPORT ARM DEFECTIVE		1	1				
<b>Place of Incident</b>							
WOODLAND		5	5				
<b>Cover</b>							
DENSE		1	1				
LIGHT		4	4				
<b>Victim Experience</b>							
OVER 10 YEARS		5	5				
<b>Offender Experience</b>							
OVER 10 YEARS		5	5				
<b>Offender Experience Hunting Specie</b>							
2 - 5 YEARS		1	1				
6 - 10 YEARS		1	1				
OVER 10 YEARS		3	3				

These 5 incidents represent 10.87% of the 46 incidents reported during the period.

# Hunting Related Shooting Incidents from 01/01/2007 to 12/31/2007

## INCIDENTS INVOLVING S TURKEY

Hunting Related Shooting Incident Reporting System

HRSIS Report: 02

	<i>Non-Fatal</i>		<i>Non-Fatal</i>	
	<i>Fatal</i>	<i>Total</i>	<i>Fatal</i>	<i>Total</i>
<b>Number of Incidents</b>				
***** TOTALS *****	5	5		
<b>Injury Type</b>				
SELF-INFLICTED	1	1		
INFLECTED BY OTHERS	4	4		
<b>Sporting Arm Used</b>				
SHOTGUN	4	4		
MUZZLELOADER	1	1		
<b>Species Hunted</b>				
TURKEY	5	5		
<b>Victim Age</b>				
21 - 50 YEARS	4	4		
OVER 50 YEARS	1	1		
<b>Offender Age</b>				
16 - 20 YEARS	1	1		
21 - 50 YEARS	2	2		
OVER 50 YEARS	2	2		
<b>Light Conditions</b>				
DAWN	2	2		
DAYLIGHT	3	3		
<b>Weather Conditions</b>				
CLEAR	4	4		
OVERCAST	1	1		
<b>Cause of Incident</b>				
UNINTENTIONAL DISCHARGE	1	1		
SHOT FOR GAME	4	4		
<b>Place of Incident</b>				
WOODLAND	5	5		
<b>Cover</b>				
DENSE	1	1		
LIGHT	4	4		
<b>Victim Experience</b>				
OVER 10 YEARS	5	5		
<b>Offender Experience</b>				
2 - 5 YEARS	1	1		
OVER 10 YEARS	4	4		
<b>Offender Experience Hunting Specie</b>				
2 - 5 YEARS	1	1		
6 - 10 YEARS	1	1		
OVER 10 YEARS	3	3		
<b>Distance Between Victim/Offender Mistaken for Game</b>				
26 - 75 FEET			1	1
76 - 150 FEET			3	3
<b>Color Worn by Victim Mistaken for Game</b>				
FL. ORANGE			1	1
CAMOUFLAGE			3	3
<b>Fluorescent Orange Visible to Offender?</b>				
NO			1	1
<b>Victim Position</b>				
STANDING			2	2
WALKING/RUNNING			1	1
SITTING			2	2
<b>Victim Was</b>				
HUNTING			5	5
<b>Offender Was</b>				
HUNTING			5	5
<b>Caliber</b>				
BLACK POWDER			1	1
<b>Gauge</b>				
12			4	4
<b>Shot Size</b>				
4			1	1
5			2	2
6			1	1

These 5 incidents represent 15.15% of the 33 incidents reported during the period.

# Hunting Related Shooting Incidents from 01/01/2008 to 12/31/2008

## INCIDENTS INVOLVING S TURKEY

Hunting Related Shooting Incident Reporting System

HRSIS Report: 02

	<i>Non-Fatal</i>		<i>Non-Fatal</i>	
	<i>Fatal</i>	<i>Total</i>	<i>Fatal</i>	<i>Total</i>
<b>Number of Incidents</b>				
**** TOTALS ****	8	8		
<b>Injury Type</b>				
SELF-INFLICTED	1	1		
INFLECTED BY OTHERS	7	7		
<b>Sporting Arm Used</b>				
SHOTGUN	8	8		
<b>Species Hunted</b>				
TURKEY	8	8		
<b>Victim Age</b>				
16 - 20 YEARS	1	1		
21 - 50 YEARS	4	4		
OVER 50 YEARS	3	3		
<b>Offender Age</b>				
12 - 15 YEARS	1	1		
21 - 50 YEARS	4	4		
OVER 50 YEARS	3	3		
<b>Light Conditions</b>				
DAWN	3	3		
DAYLIGHT	5	5		
<b>Weather Conditions</b>				
CLEAR	3	3		
OVERCAST	5	5		
<b>Cause of Incident</b>				
UNINTENTIONAL DISCHARGE	1	1		
VICTIM IN LINE OF FIRE	1	1		
SHOT FOR GAME	6	6		
<b>Place of Incident</b>				
WOODLAND	8	8		
<b>Cover</b>				
DENSE	3	3		
LIGHT	5	5		
<b>Victim Experience</b>				
6 - 10 YEARS	1	1		
OVER 10 YEARS	7	7		
<b>Offender Experience</b>				
UNDER 2 YEARS	1	1		
OVER 10 YEARS	7	7		
<b>Offender Experience Hunting Specie</b>				
6 - 10 YEARS			1	1
OVER 10 YEARS			7	7
<b>Distance Between Victim/Offender Mistaken for Game</b>				
26 - 75 FEET			1	1
76 - 150 FEET			5	5
<b>Color Worn by Victim Mistaken for Game</b>				
CAMOUFLAGE			6	6
<b>Victim Position</b>				
STANDING			2	2
WALKING/RUNNING			1	1
SITTING			4	4
OTHER/UNKNOWN			1	1
<b>Victim Was</b>				
HUNTING			8	8
<b>Offender Was</b>				
HUNTING			8	8
<b>Gauge</b>				
10			1	1
12			6	6
20			1	1
<b>Shot Size</b>				
2			1	1
4			2	2
5			3	3
6			2	2

These 8 incidents represent 22.86% of the 35 incidents reported during the period.

# Hunting Related Shooting Incidents from 01/01/2009 to 12/31/2009

## INCIDENTS INVOLVING S TURKEY

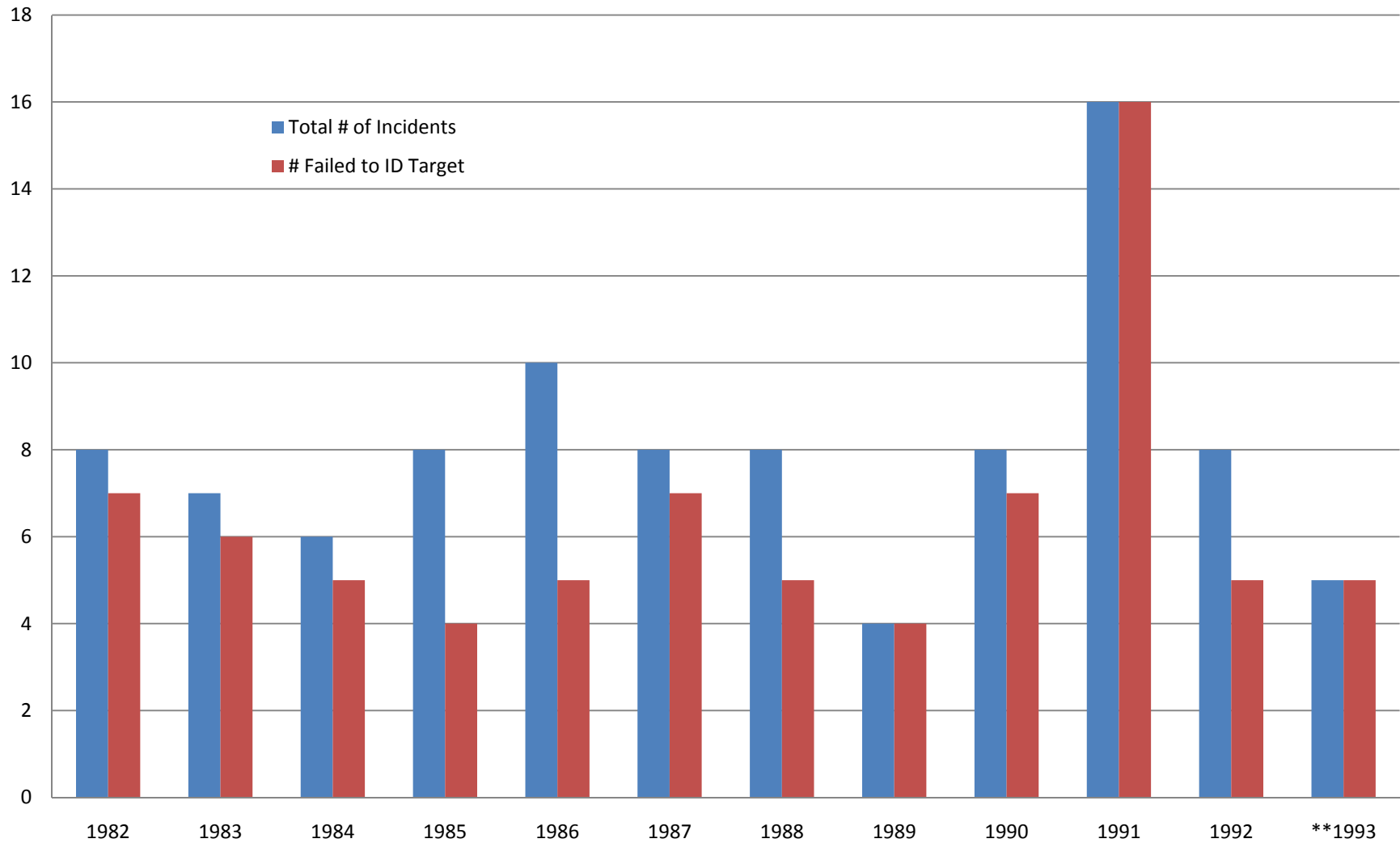
Hunting Related Shooting Incident Reporting System

HRSIS Report: 02

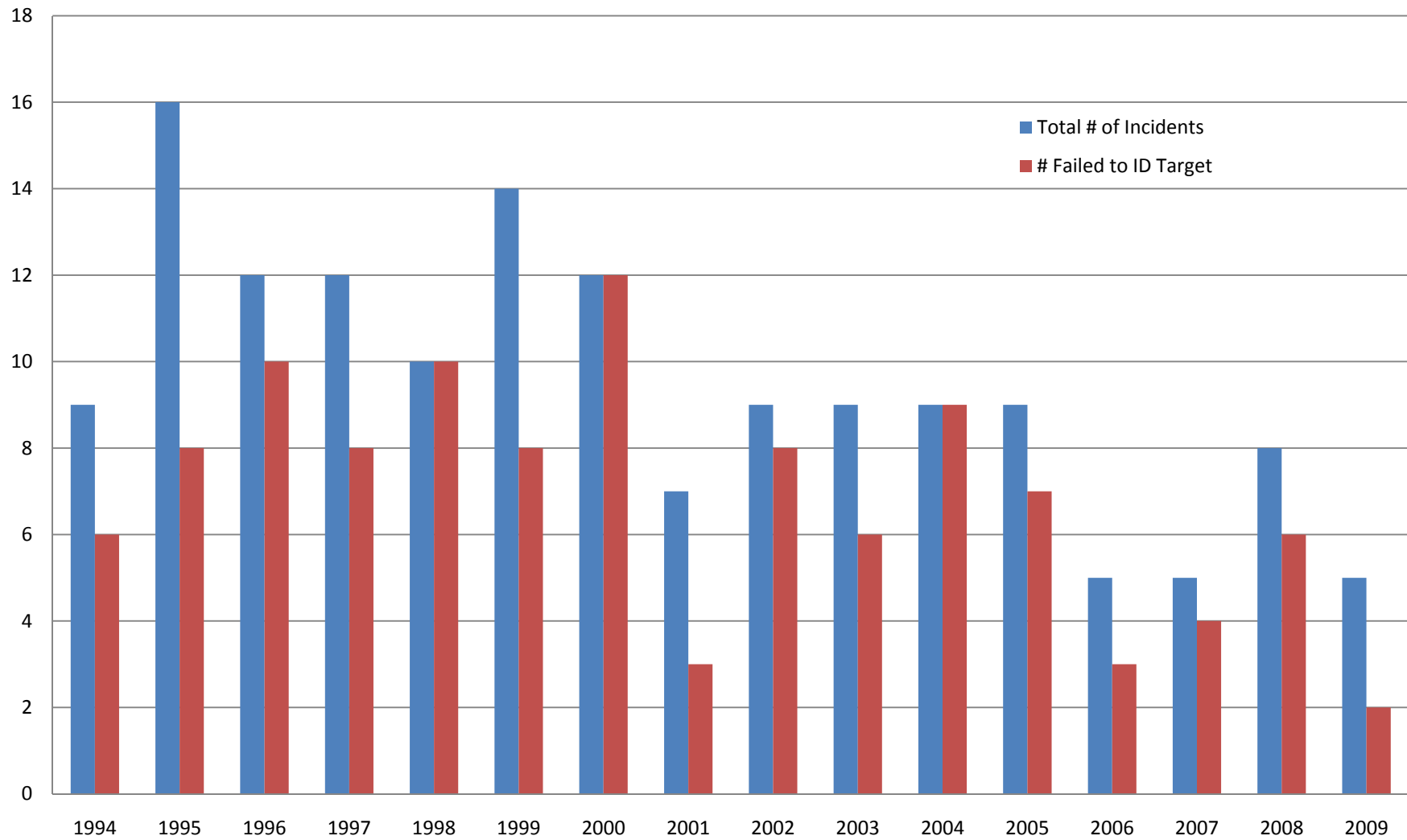
	<i>Non-Fatal</i>		<i>Total</i>		<i>Non-Fatal</i>		<i>Total</i>
	<i>Fatal</i>	<i>Fatal</i>	<i>Total</i>		<i>Fatal</i>	<i>Fatal</i>	<i>Total</i>
<b>Number of Incidents</b>				<b>Offender Experience</b>			
**** TOTALS ****		5	5	2 - 5 YEARS		1	1
<b>Injury Type</b>				<b>Offender Experience Hunting Specie</b>			
INFLECTED BY OTHERS		5	5	OVER 10 YEARS		3	3
<b>Sporting Arm Used</b>				<b>Distance Between Victim/Offender Mistaken for Game</b>			
SHOTGUN		5	5	76 - 150 FEET		1	1
<b>Species Hunted</b>				<b>Color Worn by Victim Mistaken for Game</b>			
TURKEY		5	5	151 - 300 FEET		1	1
<b>Victim Age</b>				<b>Victim Position</b>			
16 - 20 YEARS		1	1	CAMOUFLAGE		1	1
21 - 50 YEARS		2	2	OTHER COLOR		1	1
OVER 50 YEARS		2	2	<b>Victim Was</b>			
<b>Offender Age</b>				<b>Offender Was</b>			
12 - 15 YEARS		1	1	HUNTING		4	4
21 - 50 YEARS		2	2	OTHER		1	1
NOT REPORTED		1	1	<b>Gauge</b>			
OVER 50 YEARS		1	1	12		5	5
<b>Light Conditions</b>				<b>Shot Size</b>			
DAWN		2	2	4		1	1
DAYLIGHT		3	3	5		1	1
<b>Weather Conditions</b>				<b>Place of Incident</b>			
CLEAR		2	2	FIELD		2	2
OVERCAST		1	1	WOODLAND		3	3
FOG		1	1	<b>Cover</b>			
RAIN		1	1	DENSE		1	1
<b>Cause of Incident</b>				<b>Victim Experience</b>			
VICTIM IN LINE OF FIRE		3	3	UNDER 2 YEARS		1	1
SHOT FOR GAME		2	2	6 - 10 YEARS		1	1
<b>Place of Incident</b>				<b>Victim Experience</b>			
FIELD		2	2	OVER 10 YEARS		3	3
WOODLAND		3	3				

These 5 incidents represent 15.15% of the 33 incidents reported during the period.

## Pennsylvania Spring Turkey HRSIs 1982-1993



## Pennsylvania Spring Turkey HRSIs 1994-2009





**Summary  
of  
Fall Turkey  
HRSIs**

**1982-2009**

## Hunting Related Shooting Incidents from 1/1/1982 to 12/31/1982

### INCIDENTS INVOLVING FALL TURKEY

**Hunting Related Shooting Incident Reporting**

**HRSIS Report: 02**

		<i>Non-</i>				<i>Non-</i>	
	<i>Fatal</i>	<i>Fatal</i>	<i>Total</i>		<i>Fatal</i>	<i>Fatal</i>	<i>Total</i>
<b>Number of Incidents</b>				<b>Victim Experience</b>			
**** TOTALS ****	2	21	23	UNDER 2 YEARS	1	2	3
<b>Injury Type</b>				2 - 5 YEARS	1	1	2
SELF-INFLICTED		1	1	6 - 10 YEARS		2	2
INFLECTED BY OTHERS	2	20	22	OVER 10 YEARS		16	16
				<b>Offender Experience</b>			
<b>Sporting Arm Used</b>				UNDER 2 YEARS		5	5
SHOTGUN		19	19	2 - 5 YEARS		3	3
RIFLE	2	2	4	6 - 10 YEARS		2	2
<b>Species Hunted</b>				OVER 10 YEARS	2	11	13
TURKEY	2	21	23	<b>Offender Experience Hunting Specie</b>			
<b>Victim Age</b>				NOT REPORTED	2	21	23
12 - 15 YEARS	1	2	3	<b>Distance Between Victim/Offender Mistaken for Game</b>			
21 - 50 YEARS	1	13	14	26 - 75 FEET		3	3
OVER 50 YEARS		6	6	76 - 150 FEET		6	6
<b>Offender Age</b>				151 - 300 FEET	2	1	3
12 - 15 YEARS		3	3	<b>Color Worn by Victim Mistaken for Game</b>			
16 - 20 YEARS		1	1	FL. ORANGE		1	1
21 - 50 YEARS	2	11	13	CAMOUFLAGE	1	5	6
OVER 50 YEARS		2	2	OTHER COLOR	1	4	5
<b>Light Conditions</b>				<b>Fluorescent Orange Visible to Offender?</b>			
DAYLIGHT	2	21	23	YES		1	1
<b>Weather Conditions</b>				<b>Victim Position</b>			
CLEAR	1	14	15	STANDING		2	2
OVERCAST	1	6	7	WALKING/RUNNING		5	5
SNOW		1	1	SITTING	2	9	11
<b>Cause of Incident</b>				OTHER/UNKNOWN		5	5
STRAY SHOT		3	3	<b>Victim Was</b>			
VICTIM IN LINE OF FIRE		6	6	NOT REPORTED	2	21	23
HUNTER SLIPPED &/OR FELL		1	1	<b>Offender Was</b>			
HUNTER DROPPED SPORT		1	1	NOT REPORTED	2	21	23
SHOT FOR GAME	2	10	12	<b>Caliber</b>			
<b>Place of Incident</b>				NOT REPORTED	2	2	4
FIELD		1	1	<b>Gauge</b>			
WOODLAND	2	18	20	NOT REPORTED		19	19
ROAD/HIGHWAY		2	2	<b>Shot Size</b>			
<b>Cover</b>				NOT REPORTED		19	19
DENSE	2	7	9	<b>Shot Size</b>			
LIGHT		12	12	NOT REPORTED		19	19

These 23 incidents represent 12.71% of the 181 incidents reported during the period.

## Hunting Related Shooting Incidents from 1/1/1983 to 12/31/1983 INCIDENTS INVOLVING FALL TURKEY

**Hunting Related Shooting Incident Reporting**

**HRSIS Report: 02**

		<i>Non-</i>				<i>Non-</i>	
	<i>Fatal</i>	<i>Fatal</i>	<i>Total</i>		<i>Fatal</i>	<i>Fatal</i>	<i>Total</i>
<b>Number of Incidents</b>				<b>Offender Experience</b>			
**** TOTALS ****		13	13	UNDER 2 YEARS		4	4
<b>Injury Type</b>				6 - 10 YEARS			
INFLECTED BY OTHERS		13	13	OVER 10 YEARS		1	1
<b>Sporting Arm Used</b>				<b>Offender Experience Hunting Specie</b>			
SHOTGUN		13	13	NOT REPORTED		13	13
<b>Species Hunted</b>				<b>Distance Between Victim/Offender Mistaken for Game</b>			
TURKEY		13	13	76 - 150 FEET		9	9
<b>Victim Age</b>				151 - 300 FEET			
12 - 15 YEARS		2	2	FL. ORANGE		2	2
16 - 20 YEARS		4	4	CAMOUFLAGE		1	1
21 - 50 YEARS		7	7	OTHER COLOR		1	1
<b>Offender Age</b>				NOT REPORTED			
12 - 15 YEARS		1	1	<b>Fluorescent Orange Visible to Offender?</b>			
21 - 50 YEARS		8	8	NOT REPORTED		2	2
OVER 50 YEARS		1	1	<b>Victim Position</b>			
<b>Light Conditions</b>				STANDING			
DAYLIGHT		12	12	WALKING/RUNNING		3	3
DUSK		1	1	SITTING		6	6
<b>Weather Conditions</b>				OTHER/UNKNOWN			
CLEAR		9	9	<b>Victim Was</b>			
OVERCAST		2	2	NOT REPORTED		13	13
RAIN		1	1	<b>Offender Was</b>			
SNOW		1	1	NOT REPORTED		13	13
<b>Cause of Incident</b>				<b>Gauge</b>			
UNINTENTIONAL DISCHARGE		1	1	NOT REPORTED		13	13
VICTIM IN LINE OF FIRE		2	2	<b>Shot Size</b>			
SHOT FOR GAME		10	10	NOT REPORTED		13	13
<b>Place of Incident</b>				NOT REPORTED			
FIELD		1	1	<b>Cover</b>			
WOODLAND		11	11	DENSE		6	6
ROAD/HIGHWAY		1	1	LIGHT		6	6
<b>Victim Experience</b>				NOT REPORTED			
UNDER 2 YEARS		3	3	<b>Victim Experience</b>			
2 - 5 YEARS		4	4	UNDER 2 YEARS		3	3
6 - 10 YEARS		1	1	2 - 5 YEARS		4	4
OVER 10 YEARS		5	5	6 - 10 YEARS		1	1
				OVER 10 YEARS		5	5

These 13 incidents represent 7.3% of the 178 incidents reported during the period.

## Hunting Related Shooting Incidents from 1/1/1984 to 12/31/1984 INCIDENTS INVOLVING FALL TURKEY

**Hunting Related Shooting Incident Reporting**

**HRSIS Report: 02**

		<i>Non-</i>				<i>Non-</i>	
	<i>Fatal</i>	<i>Fatal</i>	<i>Total</i>		<i>Fatal</i>	<i>Fatal</i>	<i>Total</i>
<b>Number of Incidents</b>				<b>Offender Experience</b>			
**** TOTALS ****	1	9	10	UNDER 2 YEARS		2	2
<b>Injury Type</b>				2 - 5 YEARS		1	1
SELF-INFLICTED	1		1	6 - 10 YEARS		4	4
INFLECTED BY OTHERS		9	9	OVER 10 YEARS	1	2	3
<b>Sporting Arm Used</b>				<b>Offender Experience Hunting Specie</b>			
SHOTGUN		9	9	NOT REPORTED	1	9	10
RIFLE	1		1	<b>Distance Between Victim/Offender Mistaken for Game</b>			
<b>Species Hunted</b>				76 - 150 FEET		7	7
TURKEY	1	9	10	<b>Color Worn by Victim Mistaken for Game</b>			
<b>Victim Age</b>				CAMOUFLAGE		6	6
12 - 15 YEARS		2	2	OTHER COLOR		1	1
21 - 50 YEARS		7	7	<b>Victim Position</b>			
OVER 50 YEARS	1		1	STANDING		2	2
<b>Offender Age</b>				WALKING/RUNNING		2	2
12 - 15 YEARS		1	1	SITTING		5	5
16 - 20 YEARS		2	2	OTHER/UNKNOWN	1		1
21 - 50 YEARS		3	3	<b>Victim Was</b>			
OVER 50 YEARS	1	1	2	NOT REPORTED	1	9	10
<b>Light Conditions</b>				<b>Offender Was</b>			
DAWN		1	1	NOT REPORTED	1	9	10
DAYLIGHT		7	7	<b>Caliber</b>			
DUSK	1	1	2	NOT REPORTED	1		1
<b>Weather Conditions</b>				<b>Gauge</b>			
CLEAR	1	7	8	NOT REPORTED		9	9
OVERCAST		1	1	<b>Shot Size</b>			
FOG		1	1	NOT REPORTED		9	9
<b>Cause of Incident</b>				<b>Place of Incident</b>			
SPORT ARM DANGEROUS POS	1		1	WOODLAND	1	9	10
STRAY SHOT		2	2	<b>Cover</b>			
SHOT FOR GAME		7	7	DENSE		6	6
<b>Place of Incident</b>				LIGHT	1	3	4
<b>Cover</b>				<b>Victim Experience</b>			
DENSE		6	6	UNDER 2 YEARS		3	3
LIGHT	1	3	4	2 - 5 YEARS		1	1
<b>Victim Experience</b>				OVER 10 YEARS	1	5	6
UNDER 2 YEARS		3	3				
2 - 5 YEARS		1	1				
OVER 10 YEARS	1	5	6				

These 10 incidents represent 8.2% of the 122 incidents reported during the period.

## Hunting Related Shooting Incidents from 1/1/1985 to 12/31/1985 INCIDENTS INVOLVING FALL TURKEY

**Hunting Related Shooting Incident Reporting**

**HRSIS Report: 02**

		<i>Non-</i>				<i>Non-</i>	
	<i>Fatal</i>	<i>Fatal</i>	<i>Total</i>		<i>Fatal</i>	<i>Fatal</i>	<i>Total</i>
<b><i>Number of Incidents</i></b>				<b><i>Offender Experience</i></b>			
**** TOTALS ****	1	16	17	2 - 5 YEARS		3	3
<b><i>Injury Type</i></b>				6 - 10 YEARS		1	1
SELF-INFLICTED		2	2	OVER 10 YEARS	1	12	13
INFLECTED BY OTHERS	1	14	15	<b><i>Offender Experience Hunting Specie</i></b>			
<b><i>Sporting Arm Used</i></b>				NOT REPORTED	1	16	17
SHOTGUN		11	11	<b><i>Distance Between Victim/Offender Mistaken for Game</i></b>			
RIFLE	1	4	5	26 - 75 FEET		2	2
HANDGUN		1	1	76 - 150 FEET		3	3
<b><i>Species Hunted</i></b>				151 - 300 FEET	1	5	6
TURKEY	1	16	17	<b><i>Color Worn by Victim Mistaken for Game</i></b>			
<b><i>Victim Age</i></b>				FL. ORANGE		1	1
12 - 15 YEARS	1	2	3	CAMOUFLAGE	1	7	8
21 - 50 YEARS		12	12	OTHER COLOR		2	2
OVER 50 YEARS		2	2	<b><i>Fluorescent Orange Visible to Offender?</i></b>			
<b><i>Offender Age</i></b>				NO		1	1
12 - 15 YEARS		2	2	<b><i>Victim Position</i></b>			
16 - 20 YEARS		1	1	STANDING		10	10
21 - 50 YEARS		10	10	WALKING/RUNNING		3	3
OVER 50 YEARS	1	3	4	SITTING	1	3	4
<b><i>Light Conditions</i></b>				<b><i>Victim Was</i></b>			
DAYLIGHT	1	15	16	NOT REPORTED	1	16	17
DUSK		1	1	<b><i>Offender Was</i></b>			
<b><i>Weather Conditions</i></b>				NOT REPORTED	1	16	17
CLEAR		5	5	<b><i>Caliber</i></b>			
OVERCAST	1	4	5	NOT REPORTED	1	5	6
RAIN		7	7	<b><i>Gauge</i></b>			
<b><i>Cause of Incident</i></b>				NOT REPORTED		11	11
UNINTENTIONAL DISCHARGE		2	2	<b><i>Shot Size</i></b>			
RICOCHET		1	1	NOT REPORTED		11	11
VICTIM IN LINE OF FIRE		3	3				
SHOT FOR GAME	1	10	11				
<b><i>Place of Incident</i></b>							
WOODLAND	1	16	17				
<b><i>Cover</i></b>							
DENSE		11	11				
LIGHT	1	5	6				
<b><i>Victim Experience</i></b>							
UNDER 2 YEARS		2	2				
2 - 5 YEARS	1	2	3				
OVER 10 YEARS		12	12				

These 17 incidents represent 13.28% of the 128 incidents reported during the period.

## Hunting Related Shooting Incidents from 1/1/1986 to 12/31/1986 INCIDENTS INVOLVING FALL TURKEY

**Hunting Related Shooting Incident Reporting**

**HRSIS Report: 02**

		<i>Non-</i>				<i>Non-</i>	
	<i>Fatal</i>	<i>Fatal</i>	<i>Total</i>		<i>Fatal</i>	<i>Fatal</i>	<i>Total</i>
<b>Number of Incidents</b>				<b>Victim Experience</b>			
**** TOTALS ****	1	24	25	UNDER 2 YEARS		1	1
<b>Injury Type</b>				6 - 10 YEARS		4	4
SELF-INFLICTED		1	1	OVER 10 YEARS	1	19	20
INFLECTED BY OTHERS	1	23	24	<b>Offender Experience</b>			
<b>Sporting Arm Used</b>				UNDER 2 YEARS		7	7
SHOTGUN		22	22	2 - 5 YEARS	1	1	2
RIFLE	1	2	3	6 - 10 YEARS		3	3
<b>Species Hunted</b>				OVER 10 YEARS		13	13
TURKEY	1	24	25	<b>Offender Experience Hunting Specie</b>			
<b>Victim Age</b>				NOT REPORTED	1	24	25
12 - 15 YEARS		1	1	<b>Distance Between Victim/Offender Mistaken for Game</b>			
16 - 20 YEARS		4	4	26 - 75 FEET		3	3
21 - 50 YEARS	1	17	18	76 - 150 FEET		8	8
OVER 50 YEARS		2	2	151 - 300 FEET		3	3
<b>Offender Age</b>				OVER 300 FEET	1		1
16 - 20 YEARS	1	2	3	<b>Color Worn by Victim Mistaken for Game</b>			
21 - 50 YEARS		11	11	CAMOUFLAGE	1	12	13
OVER 50 YEARS		4	4	OTHER COLOR		2	2
<b>Light Conditions</b>				<b>Victim Position</b>			
DAYLIGHT	1	23	24	STANDING		8	8
DUSK		1	1	WALKING/RUNNING		8	8
<b>Weather Conditions</b>				SITTING	1	8	9
CLEAR		9	9	<b>Victim Was</b>			
OVERCAST	1	11	12	NOT REPORTED	1	24	25
FOG		2	2	<b>Offender Was</b>			
RAIN		2	2	NOT REPORTED	1	24	25
<b>Cause of Incident</b>				<b>Caliber</b>			
RICOCHET		1	1	NOT REPORTED	1	2	3
STRAY SHOT		4	4	<b>Gauge</b>			
VICTIM IN LINE OF FIRE		2	2	NOT REPORTED		22	22
HUNTER SLIPPED &/OR FELL		2	2	<b>Shot Size</b>			
HUNTER DROPPED SPORT		1	1	NOT REPORTED		22	22
SHOT FOR GAME	1	14	15				
<b>Place of Incident</b>							
FIELD		1	1				
WOODLAND	1	22	23				
ROAD/HIGHWAY		1	1				
<b>Cover</b>							
DENSE	1	12	13				
LIGHT		12	12				

These 25 incidents represent 20% of the 125 incidents reported during the period.

Thursday, December 06, 2001

Page 1 of 1

## Hunting Related Shooting Incidents from 1/1/1987 to 12/31/1987 INCIDENTS INVOLVING FALL TURKEY

**Hunting Related Shooting Incident Reporting**

**HRSIS Report: 02**

		<i>Non-</i>				<i>Non-</i>	
	<i>Fatal</i>	<i>Fatal</i>	<i>Total</i>		<i>Fatal</i>	<i>Fatal</i>	<i>Total</i>
<b>Number of Incidents</b>				<b>Victim Experience</b>			
**** TOTALS ****	1	24	25	UNDER 2 YEARS		1	1
<b>Injury Type</b>				2 - 5 YEARS		3	3
SELF-INFLICTED		1	1	6 - 10 YEARS	1	1	2
INFLECTED BY OTHERS	1	23	24	OVER 10 YEARS		19	19
<b>Sporting Arm Used</b>				<b>Offender Experience</b>			
SHOTGUN		16	16	UNDER 2 YEARS		3	3
RIFLE	1	8	9	2 - 5 YEARS		1	1
<b>Species Hunted</b>				6 - 10 YEARS		3	3
TURKEY	1	24	25	OVER 10 YEARS	1	17	18
<b>Victim Age</b>				<b>Offender Experience Hunting Specie</b>			
12 - 15 YEARS		2	2	NOT REPORTED	1	24	25
16 - 20 YEARS		2	2	<b>Distance Between Victim/Offender Mistaken for Game</b>			
21 - 50 YEARS	1	16	17	0 - 25 FEET		1	1
OVER 50 YEARS		4	4	26 - 75 FEET		1	1
<b>Offender Age</b>				76 - 150 FEET	1	13	14
12 - 15 YEARS		1	1	151 - 300 FEET		4	4
16 - 20 YEARS		1	1	<b>Color Worn by Victim Mistaken for Game</b>			
21 - 50 YEARS	1	15	16	CAMOUFLAGE	1	19	20
OVER 50 YEARS		5	5	<b>Victim Position</b>			
<b>Light Conditions</b>				STANDING		6	6
DAWN		3	3	WALKING/RUNNING	1	5	6
DAYLIGHT	1	21	22	SITTING		11	11
<b>Weather Conditions</b>				OTHER/UNKNOWN		2	2
CLEAR		19	19	<b>Victim Was</b>			
OVERCAST	1	3	4	NOT REPORTED	1	24	25
SNOW		2	2	<b>Offender Was</b>			
<b>Cause of Incident</b>				NOT REPORTED	1	24	25
SPORT ARM DANGEROUS POS		1	1	<b>Caliber</b>			
VICTIM IN LINE OF FIRE		4	4	NOT REPORTED	1	8	9
SHOT FOR GAME	1	19	20	<b>Gauge</b>			
<b>Place of Incident</b>				NOT REPORTED		16	16
WOODLAND	1	23	24	<b>Shot Size</b>			
ROAD/HIGHWAY		1	1	NOT REPORTED		16	16
<b>Cover</b>							
DENSE	1	14	15				
LIGHT		9	9				

These 25 incidents represent 19.53% of the 128 incidents reported during the period.

## Hunting Related Shooting Incidents from 1/1/1988 to 12/31/1988

### INCIDENTS INVOLVING FALL TURKEY

**Hunting Related Shooting Incident Reporting**

**HRSIS Report: 02**

		<i>Non-</i>				<i>Non-</i>	
	<i>Fatal</i>	<i>Fatal</i>	<i>Total</i>		<i>Fatal</i>	<i>Fatal</i>	<i>Total</i>
<b>Number of Incidents</b>				<b>Victim Experience</b>			
**** TOTALS ****	3	18	21	UNDER 2 YEARS	1	1	2
<b>Injury Type</b>							
SELF-INFLICTED	1		1	2 - 5 YEARS	1	2	3
INFLECTED BY OTHERS	2	18	20	6 - 10 YEARS		1	1
				OVER 10 YEARS	1	14	15
<b>Sporting Arm Used</b>				<b>Offender Experience</b>			
SHOTGUN	1	17	18	UNDER 2 YEARS		2	2
RIFLE	2	1	3	2 - 5 YEARS	1		1
<b>Species Hunted</b>				6 - 10 YEARS			
TURKEY	3	18	21	OVER 10 YEARS	2	11	13
<b>Victim Age</b>				<b>Offender Experience Hunting Specie</b>			
12 - 15 YEARS	1	1	2	NOT REPORTED	3	18	21
16 - 20 YEARS		2	2	<b>Distance Between Victim/Offender Mistaken for Game</b>			
21 - 50 YEARS	2	10	12	26 - 75 FEET		3	3
OVER 50 YEARS		5	5	76 - 150 FEET		6	6
<b>Offender Age</b>				151 - 300 FEET			
12 - 15 YEARS	1		1	<b>Color Worn by Victim Mistaken for Game</b>			
16 - 20 YEARS		3	3	CAMOUFLAGE	2	10	12
21 - 50 YEARS	1	6	7	OTHER COLOR		2	2
OVER 50 YEARS	1	7	8	<b>Victim Position</b>			
<b>Light Conditions</b>				STANDING			
DAWN		1	1	WALKING/RUNNING	2	5	7
DAYLIGHT	3	17	20	SITTING		9	9
<b>Weather Conditions</b>				OTHER/UNKNOWN			
CLEAR	2	14	16	<b>Victim Was</b>			
OVERCAST		3	3	NOT REPORTED	3	18	21
RAIN	1	1	2	<b>Offender Was</b>			
<b>Cause of Incident</b>				NOT REPORTED			
UNINTENTIONAL DISCHARGE	1	1	2	<b>Caliber</b>			
STRAY SHOT		1	1	NOT REPORTED	2	1	3
VICTIM IN LINE OF FIRE		4	4	<b>Gauge</b>			
SHOT FOR GAME	2	12	14	NOT REPORTED	1	17	18
<b>Place of Incident</b>				<b>Shot Size</b>			
FIELD		1	1	NOT REPORTED	1	17	18
WOODLAND	3	17	20				
<b>Cover</b>							
DENSE		7	7				
LIGHT	3	11	14				

These 21 incidents represent 16.03% of the 131 incidents reported during the period.



## Hunting Related Shooting Incidents from 1/1/1989 to 12/31/1989 INCIDENTS INVOLVING FALL TURKEY

**Hunting Related Shooting Incident Reporting**

**HRSIS Report: 02**

		<i>Non-</i>				<i>Non-</i>	
	<i>Fatal</i>	<i>Fatal</i>	<i>Total</i>		<i>Fatal</i>	<i>Fatal</i>	<i>Total</i>
<b>Number of Incidents</b>				<b>Offender Experience</b>			
**** TOTALS ****		19	19	UNDER 2 YEARS		5	5
<b>Injury Type</b>				6 - 10 YEARS			
INFLECTED BY OTHERS		19	19	OVER 10 YEARS		5	5
<b>Sporting Arm Used</b>				<b>Offender Experience Hunting Specie</b>			
				NOT REPORTED		19	19
SHOTGUN	16		16	<b>Distance Between Victim/Offender Mistaken for Game</b>			
RIFLE	3		3	26 - 75 FEET		2	2
<b>Species Hunted</b>				76 - 150 FEET		7	7
TURKEY		19	19	151 - 300 FEET		8	8
<b>Victim Age</b>				<b>Color Worn by Victim Mistaken for Game</b>			
12 - 15 YEARS		1	1	FL. ORANGE		1	1
16 - 20 YEARS		1	1	CAMOUFLAGE		15	15
21 - 50 YEARS		16	16	OTHER COLOR		1	1
OVER 50 YEARS		1	1	<b>Fluorescent Orange Visible to Offender?</b>			
<b>Offender Age</b>				NO		1	1
16 - 20 YEARS		3	3	<b>Victim Position</b>			
21 - 50 YEARS		9	9	STANDING		5	5
OVER 50 YEARS		3	3	WALKING/RUNNING		5	5
<b>Light Conditions</b>				SITTING		9	9
DAYLIGHT		18	18	<b>Victim Was</b>			
DUSK		1	1	NOT REPORTED		19	19
<b>Weather Conditions</b>				<b>Offender Was</b>			
CLEAR		16	16	NOT REPORTED		19	19
OVERCAST		2	2	<b>Caliber</b>			
RAIN		1	1	NOT REPORTED		3	3
<b>Cause of Incident</b>				<b>Gauge</b>			
STRAY SHOT		1	1	NOT REPORTED		16	16
VICTIM IN LINE OF FIRE		1	1	<b>Shot Size</b>			
SHOT FOR GAME		17	17	NOT REPORTED		16	16
<b>Place of Incident</b>				<b>Shot Size</b>			
WOODLAND		19	19	NOT REPORTED		16	16
<b>Cover</b>							
DENSE		12	12				
LIGHT		7	7				
<b>Victim Experience</b>							
UNDER 2 YEARS		2	2				
2 - 5 YEARS		2	2				
OVER 10 YEARS		15	15				

These 19 incidents represent 16.67% of the 114 incidents reported during the period.

## Hunting Related Shooting Incidents from 1/1/1990 to 12/31/1990

### INCIDENTS INVOLVING FALL TURKEY

**Hunting Related Shooting Incident Reporting**

**HRSIS Report: 02**

	<i>Fatal</i>	<i>Non-Fatal</i>	<i>Total</i>		<i>Fatal</i>	<i>Non-Fatal</i>	<i>Total</i>
<b>Number of Incidents</b>				<b>Offender Experience</b>			
**** TOTALS ****	3	35	38	UNDER 2 YEARS		4	4
<b>Injury Type</b>				2 - 5 YEARS		1	1
SELF-INFLICTED		1	1	6 - 10 YEARS		6	6
INFLECTED BY OTHERS	3	34	37	OVER 10 YEARS	3	24	27
<b>Sporting Arm Used</b>				<b>Offender Experience Hunting Specie</b>			
SHOTGUN		32	32	NOT REPORTED	3	35	38
RIFLE	3	3	6	<b>Distance Between Victim/Offender Mistaken for Game</b>			
<b>Species Hunted</b>				26 - 75 FEET		5	5
TURKEY	3	35	38	76 - 150 FEET		13	13
<b>Victim Age</b>				151 - 300 FEET	2	6	8
12 - 15 YEARS		2	2	OVER 300 FEET	1		1
16 - 20 YEARS		1	1	<b>Color Worn by Victim Mistaken for Game</b>			
21 - 50 YEARS	3	24	27	FL. ORANGE		2	2
OVER 50 YEARS		8	8	CAMOUFLAGE	2	20	22
<b>Offender Age</b>				OTHER COLOR	1	2	3
16 - 20 YEARS		4	4	<b>Fluorescent Orange Visible to Offender?</b>			
21 - 50 YEARS	3	21	24	YES		1	1
OVER 50 YEARS		6	6	NO		1	1
<b>Light Conditions</b>				<b>Victim Position</b>			
DAWN		1	1	STANDING		8	8
DAYLIGHT	3	33	36	WALKING/RUNNING		8	8
DUSK		1	1	SITTING	3	16	19
<b>Weather Conditions</b>				OTHER/UNKNOWN		3	3
CLEAR	3	32	35	<b>Victim Was</b>			
OVERCAST		3	3	NOT REPORTED	3	35	38
<b>Cause of Incident</b>				<b>Offender Was</b>			
UNINTENTIONAL DISCHARGE		1	1	NOT REPORTED	3	35	38
STRAY SHOT		2	2	<b>Caliber</b>			
VICTIM IN LINE OF FIRE		8	8	RIMFIRE		1	1
SHOT FOR GAME	3	24	27	NOT REPORTED	3	2	5
<b>Place of Incident</b>				<b>Gauge</b>			
FIELD	1	2	3	NOT REPORTED		32	32
WOODLAND	2	33	35	<b>Shot Size</b>			
<b>Cover</b>				NOT REPORTED		32	32
DENSE	2	19	21	<b>Victim Experience</b>			
LIGHT	1	16	17	2 - 5 YEARS		5	5
<b>Victim Experience</b>				6 - 10 YEARS		2	2
2 - 5 YEARS		5	5	OVER 10 YEARS	3	28	31
6 - 10 YEARS		2	2				
OVER 10 YEARS	3	28	31				

These 38 incidents represent 31.4% of the 121 incidents reported during the period.

## Hunting Related Shooting Incidents from 1/1/1991 to 12/31/1991 INCIDENTS INVOLVING FALL TURKEY

**Hunting Related Shooting Incident Reporting**

**HRSIS Report: 02**

		<i>Non-</i>				<i>Non-</i>	
	<i>Fatal</i>	<i>Fatal</i>	<i>Total</i>		<i>Fatal</i>	<i>Fatal</i>	<i>Total</i>
<b>Number of Incidents</b>				<b>Victim Experience</b>			
**** TOTALS ****	2	35	37	UNDER 2 YEARS		1	1
<b>Injury Type</b>				2 - 5 YEARS		8	8
SELF-INFLICTED		1	1	6 - 10 YEARS		7	7
INFLECTED BY OTHERS	2	34	36	OVER 10 YEARS	2	19	21
<b>Sporting Arm Used</b>				<b>Offender Experience</b>			
SHOTGUN	1	33	34	UNDER 2 YEARS		2	2
RIFLE	1	2	3	2 - 5 YEARS		2	2
<b>Species Hunted</b>				6 - 10 YEARS		3	3
TURKEY	2	35	37	OVER 10 YEARS	2	28	30
<b>Victim Age</b>				<b>Offender Experience Hunting Specie</b>			
12 - 15 YEARS		5	5	NOT REPORTED	2	35	37
16 - 20 YEARS		7	7	<b>Distance Between Victim/Offender Mistaken for Game</b>			
21 - 50 YEARS	2	17	19	0 - 25 FEET	2	1	3
OVER 50 YEARS		6	6	26 - 75 FEET		5	5
<b>Offender Age</b>				76 - 150 FEET		16	16
12 - 15 YEARS		2	2	151 - 300 FEET		7	7
16 - 20 YEARS		2	2	<b>Color Worn by Victim Mistaken for Game</b>			
21 - 50 YEARS	2	20	22	FL. ORANGE		1	1
OVER 50 YEARS		9	9	CAMOUFLAGE	2	26	28
<b>Light Conditions</b>				OTHER COLOR		2	2
DAWN		3	3	<b>Fluorescent Orange Visible to Offender?</b>			
DAYLIGHT	2	29	31	YES		1	1
DUSK		3	3	<b>Victim Position</b>			
<b>Weather Conditions</b>				STANDING		9	9
CLEAR	2	19	21	WALKING/RUNNING		12	12
OVERCAST		14	14	SITTING	2	14	16
RAIN		1	1	<b>Victim Was</b>			
SNOW		1	1	NOT REPORTED	2	35	37
<b>Cause of Incident</b>				<b>Offender Was</b>			
RICOCHET		1	1	NOT REPORTED	2	35	37
VICTIM IN LINE OF FIRE		4	4	<b>Caliber</b>			
HUNTER DROPPED SPORT		1	1	NOT REPORTED	1	2	3
SHOT FOR GAME	2	29	31	<b>Gauge</b>			
<b>Place of Incident</b>				NOT REPORTED		1	33
FIELD		1	1	<b>Shot Size</b>			
WOODLAND	2	33	35	NOT REPORTED	1	33	34
ROAD/HIGHWAY		1	1	<b>Cover</b>			
DENSE	2	23	25				
LIGHT		12	12				

These 37 incidents represent 27.21% of the 136 incidents reported during the period.

## Hunting Related Shooting Incidents from 1/1/1992 to 12/31/1992 INCIDENTS INVOLVING FALL TURKEY

**Hunting Related Shooting Incident Reporting**

**HRSIS Report: 02**

		<i>Non-</i>				<i>Non-</i>	
	<i>Fatal</i>	<i>Fatal</i>	<i>Total</i>		<i>Fatal</i>	<i>Fatal</i>	<i>Total</i>
<b>Number of Incidents</b>				<b>Offender Experience</b>			
**** TOTALS ****		6	6	2 - 5 YEARS		1	1
<b>Injury Type</b>				6 - 10 YEARS		1	1
INFLECTED BY OTHERS		6	6	OVER 10 YEARS		1	1
<b>Sporting Arm Used</b>				NOT REPORTED		3	3
SHOTGUN		5	5	<b>Offender Experience Hunting Specie</b>			
RIFLE		1	1	NOT REPORTED		6	6
<b>Species Hunted</b>				<b>Distance Between Victim/Offender Mistaken for Game</b>			
TURKEY		6	6	76 - 150 FEET		1	1
<b>Victim Age</b>				151 - 300 FEET		1	1
16 - 20 YEARS		1	1	<b>Color Worn by Victim Mistaken for Game</b>			
21 - 50 YEARS		3	3	FL. ORANGE		2	2
OVER 50 YEARS		2	2	<b>Fluorescent Orange Visible to Offender?</b>			
<b>Offender Age</b>				YES		1	1
16 - 20 YEARS		2	2	NO		1	1
21 - 50 YEARS		1	1	<b>Victim Position</b>			
NOT REPORTED		3	3	STANDING		3	3
<b>Light Conditions</b>				WALKING/RUNNING		1	1
DAWN		1	1	SITTING		2	2
DAYLIGHT		4	4	<b>Victim Was</b>			
DUSK		1	1	HUNTING		5	5
<b>Weather Conditions</b>				OTHER		1	1
CLEAR		3	3	<b>Offender Was</b>			
RAIN		2	2	HUNTING		6	6
SNOW		1	1	<b>Caliber</b>			
<b>Cause of Incident</b>				CENTERFIRE		1	1
STRAY SHOT		1	1	<b>Gauge</b>			
VICTIM IN LINE OF FIRE		3	3	12		3	3
SHOT FOR GAME		2	2	NOT REPORTED		2	2
<b>Place of Incident</b>				<b>Shot Size</b>			
WOODLAND		6	6	2		1	1
<b>Cover</b>				4		1	1
DENSE		4	4	6		2	2
LIGHT		2	2	NOT REPORTED		1	1
<b>Victim Experience</b>							
UNDER 2 YEARS		1	1				
OVER 10 YEARS		5	5				

These 6 incidents represent 6% of the 100 incidents reported during the period.

## Hunting Related Shooting Incidents from 1/1/1993 to 12/31/1993 INCIDENTS INVOLVING FALL TURKEY

**Hunting Related Shooting Incident Reporting**

**HRSIS Report: 02**

		<i>Non-</i>				<i>Non-</i>	
	<i>Fatal</i>	<i>Fatal</i>	<i>Total</i>		<i>Fatal</i>	<i>Fatal</i>	<i>Total</i>
<b><i>Number of Incidents</i></b>				<b><i>Offender Experience</i></b>			
**** TOTALS ****		6	6	6 - 10 YEARS		1	1
<b><i>Injury Type</i></b>				OVER 10 YEARS		5	5
SELF-INFLICTED		2	2	<b><i>Offender Experience Hunting Specie</i></b>			
INFLECTED BY OTHERS		4	4	NOT REPORTED		6	6
<b><i>Sporting Arm Used</i></b>				<b><i>Distance Between Victim/Offender Mistaken for Game</i></b>			
SHOTGUN		5	5	76 - 150 FEET		3	3
RIFLE		1	1	151 - 300 FEET		1	1
<b><i>Species Hunted</i></b>				<b><i>Color Worn by Victim Mistaken for Game</i></b>			
TURKEY		6	6	CAMOUFLAGE		4	4
<b><i>Victim Age</i></b>				<b><i>Victim Position</i></b>			
16 - 20 YEARS		1	1	STANDING		2	2
21 - 50 YEARS		4	4	WALKING/RUNNING		2	2
OVER 50 YEARS		1	1	SITTING		1	1
<b><i>Offender Age</i></b>				OTHER/UNKNOWN		1	1
16 - 20 YEARS		1	1	<b><i>Victim Was</i></b>			
21 - 50 YEARS		4	4	HUNTING		6	6
OVER 50 YEARS		1	1	<b><i>Offender Was</i></b>			
<b><i>Light Conditions</i></b>				HUNTING		6	6
DAYLIGHT		5	5	<b><i>Caliber</i></b>			
DUSK		1	1	RIMFIRE		1	1
<b><i>Weather Conditions</i></b>				<b><i>Gauge</i></b>			
CLEAR		1	1	12		5	5
OVERCAST		3	3	<b><i>Shot Size</i></b>			
RAIN		2	2	4		5	5
<b><i>Cause of Incident</i></b>							
UNINTENTIONAL DISCHARGE		1	1				
HUNTER SLIPPED &/OR FELL		1	1				
SHOT FOR GAME		4	4				
<b><i>Place of Incident</i></b>							
FIELD		1	1				
WOODLAND		5	5				
<b><i>Cover</i></b>							
DENSE		4	4				
LIGHT		2	2				
<b><i>Victim Experience</i></b>							
6 - 10 YEARS		2	2				
OVER 10 YEARS		4	4				

These 6 incidents represent 7.06% of the 85 incidents reported during the period.

## Hunting Related Shooting Incidents from 1/1/1994 to 12/31/1994 INCIDENTS INVOLVING FALL TURKEY

**Hunting Related Shooting Incident Reporting**

HRSIS Report: 02

		<i>Non-</i>				<i>Non-</i>	
	<i>Fatal</i>	<i>Fatal</i>	<i>Total</i>		<i>Fatal</i>	<i>Fatal</i>	<i>Total</i>
<b>Number of Incidents</b>				<b>Offender Experience Hunting Specie</b>			
**** TOTALS ****		7	7	NOT REPORTED		7	7
<b>Injury Type</b>				<b>Distance Between Victim/Offender Mistaken for Game</b>			
SELF-INFLICTED		1	1	26 - 75 FEET		1	1
INFLECTED BY OTHERS		6	6	76 - 150 FEET		1	1
<b>Sporting Arm Used</b>				151 - 300 FEET		2	2
SHOTGUN		7	7	<b>Color Worn by Victim Mistaken for Game</b>			
<b>Species Hunted</b>				FL. ORANGE		1	1
TURKEY		7	7	CAMOUFLAGE		3	3
<b>Victim Age</b>				<b>Fluorescent Orange Visible to Offender?</b>			
21 - 50 YEARS		6	6	YES		1	1
OVER 50 YEARS		1	1	<b>Victim Position</b>			
<b>Offender Age</b>				STANDING		3	3
12 - 15 YEARS		2	2	WALKING/RUNNING		2	2
16 - 20 YEARS		1	1	SITTING		2	2
21 - 50 YEARS		2	2	<b>Victim Was</b>			
NOT REPORTED		1	1	HUNTING		7	7
OVER 50 YEARS		1	1	<b>Offender Was</b>			
<b>Light Conditions</b>				HUNTING		7	7
DAYLIGHT		7	7	<b>Gauge</b>			
<b>Weather Conditions</b>				12		4	4
CLEAR		4	4	16		1	1
OVERCAST		3	3	20		1	1
<b>Cause of Incident</b>				UNKNOWN		1	1
STRAY SHOT		1	1	<b>Shot Size</b>			
HUNTER SLIPPED &/OR FELL		1	1	4		3	3
SHOT FOR GAME		4	4	6		1	1
SPORT ARM DEFECTIVE		1	1	UNKNOWN		3	3
<b>Place of Incident</b>							
WOODLAND		7	7				
<b>Cover</b>							
DENSE		3	3				
LIGHT		4	4				
<b>Victim Experience</b>							
OVER 10 YEARS		7	7				
<b>Offender Experience</b>							
UNDER 2 YEARS		2	2				
2 - 5 YEARS		1	1				
OVER 10 YEARS		3	3				
NOT REPORTED		1	1				

These 7 incidents represent 6.73% of the 104 incidents reported during the period.

## Hunting Related Shooting Incidents from 1/1/1995 to 12/31/1995

### INCIDENTS INVOLVING FALL TURKEY

**Hunting Related Shooting Incident Reporting**

**HRSIS Report: 02**

		<i>Non-</i>				<i>Non-</i>	
	<i>Fatal</i>	<i>Fatal</i>	<i>Total</i>		<i>Fatal</i>	<i>Fatal</i>	<i>Total</i>
<b>Number of Incidents</b>				<b>Victim Experience</b>			
**** TOTALS ****		14	14	2 - 5 YEARS		2	2
<b>Injury Type</b>				6 - 10 YEARS		1	1
SELF-INFLICTED		1	1	OVER 10 YEARS		11	11
INFLECTED BY OTHERS		13	13	<b>Offender Experience</b>			
<b>Sporting Arm Used</b>				UNDER 2 YEARS		1	1
SHOTGUN		11	11	2 - 5 YEARS		4	4
RIFLE		3	3	6 - 10 YEARS		1	1
<b>Species Hunted</b>				OVER 10 YEARS		6	6
TURKEY		14	14	NOT REPORTED		2	2
<b>Victim Age</b>				<b>Offender Experience Hunting Specie</b>			
12 - 15 YEARS		2	2	NOT REPORTED		14	14
16 - 20 YEARS		1	1	<b>Distance Between Victim/Offender Mistaken for Game</b>			
21 - 50 YEARS		7	7	26 - 75 FEET		2	2
OVER 50 YEARS		4	4	76 - 150 FEET		4	4
<b>Offender Age</b>				151 - 300 FEET		2	2
12 - 15 YEARS		4	4	OVER 300 FEET		1	1
16 - 20 YEARS		2	2	<b>Color Worn by Victim Mistaken for Game</b>			
21 - 50 YEARS		3	3	FL. ORANGE		2	2
OVER 50 YEARS		3	3	CAMOUFLAGE		7	7
NOT REPORTED		2	2	<b>Fluorescent Orange Visible to Offender?</b>			
<b>Light Conditions</b>				NO		2	2
DAWN		1	1	<b>Victim Position</b>			
DAYLIGHT		13	13	STANDING		5	5
<b>Weather Conditions</b>				WALKING/RUNNING		5	5
CLEAR		8	8	SITTING		4	4
OVERCAST		4	4	<b>Victim Was</b>			
FOG		1	1	HUNTING		14	14
RAIN		1	1	<b>Offender Was</b>			
<b>Cause of Incident</b>				HUNTING		14	14
SPORT ARM DANGEROUS POS		2	2	<b>Caliber</b>			
UNINTENTIONAL DISCHARGE		1	1	CENTERFIRE		3	3
VICTIM IN LINE OF FIRE		2	2	<b>Gauge</b>			
SHOT FOR GAME		9	9	12		8	8
<b>Place of Incident</b>				20		2	2
FIELD		1	1	UNKNOWN		1	1
WOODLAND		12	12				
ROAD/HIGHWAY		1	1				
<b>Cover</b>							
DENSE		3	3				
LIGHT		11	11				

These 14 incidents represent 14.43% of the 97 incidents reported during the period.

# Hunting Related Shooting Incidents from 1/1/1995 to 12/31/1995

## INCIDENTS INVOLVING F TURKEY

### Hunting Related Shooting Incident Reporting

HRSIS Report: 02

<i>Shot Size</i>	<i>Non-</i>			<i>Non-</i>		
	<i>Fatal</i>	<i>Fatal</i>	<i>Total</i>	<i>Fatal</i>	<i>Fatal</i>	<i>Total</i>
4		5	5			
5		1	1			
6		3	3			
7.5		1	1			
UNKNOWN		1	1			

These 14 incidents represent 14.43% of the 97 incidents reported during the period.

Thursday, December 06, 2001

Page 2 of 2



## Hunting Related Shooting Incidents from 1/1/1996 to 12/31/1996 INCIDENTS INVOLVING FALL TURKEY

**Hunting Related Shooting Incident Reporting**

**HRSIS Report: 02**

		<i>Non-</i>				<i>Non-</i>	
	<i>Fatal</i>	<i>Fatal</i>	<i>Total</i>		<i>Fatal</i>	<i>Fatal</i>	<i>Total</i>
<b>Number of Incidents</b>				<b>Victim Experience</b>			
**** TOTALS ****	1	11	12	UNDER 2 YEARS		2	2
<b>Injury Type</b>				2 - 5 YEARS		4	4
SELF-INFLICTED		3	3	OVER 10 YEARS	1	5	6
INFLECTED BY OTHERS	1	8	9	<b>Offender Experience</b>			
<b>Sporting Arm Used</b>				UNDER 2 YEARS		1	1
SHOTGUN		11	11	2 - 5 YEARS		4	4
RIFLE	1		1	OVER 10 YEARS	1	5	6
<b>Species Hunted</b>				NOT REPORTED		1	1
TURKEY	1	11	12	<b>Offender Experience Hunting Specie</b>			
<b>Victim Age</b>				UNDER 2 YEARS		4	4
12 - 15 YEARS		5	5	2 - 5 YEARS		4	4
16 - 20 YEARS		1	1	OVER 10 YEARS	1	2	3
21 - 50 YEARS		4	4	NOT REPORTED		1	1
OVER 50 YEARS	1	1	2	<b>Distance Between Victim/Offender Mistaken for Game</b>			
<b>Offender Age</b>				26 - 75 FEET		1	1
12 - 15 YEARS		4	4	76 - 150 FEET		5	5
16 - 20 YEARS		1	1	151 - 300 FEET	1		1
21 - 50 YEARS		3	3	<b>Color Worn by Victim Mistaken for Game</b>			
NOT REPORTED		1	1	FL. ORANGE		3	3
OVER 50 YEARS	1	2	3	CAMOUFLAGE	1	3	4
<b>Light Conditions</b>				<b>Fluorescent Orange Visible to Offender?</b>			
DAWN		1	1	NO		3	3
DAYLIGHT	1	10	11	<b>Victim Position</b>			
<b>Weather Conditions</b>				STANDING		1	1
CLEAR		5	5	WALKING/RUNNING		7	7
OVERCAST	1	2	3	SITTING	1	3	4
RAIN		1	1	<b>Victim Was</b>			
SNOW		3	3	HUNTING	1	11	12
<b>Cause of Incident</b>				<b>Offender Was</b>			
UNINTENTIONAL DISCHARGE		1	1	HUNTING	1	11	12
HUNTER SLIPPED &/OR FELL		3	3	<b>Caliber</b>			
HUNTER DROPPED SPORT		1	1	RIMFIRE	1		1
SHOT FOR GAME	1	6	7	<b>Gauge</b>			
<b>Place of Incident</b>				12		10	10
WOODLAND	1	11	12	20		1	1
<b>Cover</b>				<b>Shot Size</b>			
DENSE		7	7	4		2	2
LIGHT	1	4	5	5		1	1
				6		8	8

These 12 incidents represent 14.12% of the 85 incidents reported during the period.

## Hunting Related Shooting Incidents from 1/1/1997 to 12/31/1997 INCIDENTS INVOLVING FALL TURKEY

**Hunting Related Shooting Incident Reporting**

HRSIS Report: 02

		<i>Non-</i>				<i>Non-</i>	
	<i>Fatal</i>	<i>Fatal</i>	<i>Total</i>		<i>Fatal</i>	<i>Fatal</i>	<i>Total</i>
<b>Number of Incidents</b>				<b>Offender Experience</b>			
**** TOTALS ****		14	14	2 - 5 YEARS		2	2
<b>Injury Type</b>				6 - 10 YEARS		1	1
INFLECTED BY OTHERS		14	14	NOT REPORTED		1	1
<b>Sporting Arm Used</b>				OVER 10 YEARS		10	10
SHOTGUN		13	13	<b>Offender Experience Hunting Specie</b>			
RIFLE		1	1	UNDER 2 YEARS		1	1
<b>Species Hunted</b>				2 - 5 YEARS		4	4
TURKEY		14	14	6 - 10 YEARS		1	1
<b>Victim Age</b>				OVER 10 YEARS		7	7
12 - 15 YEARS		2	2	NOT REPORTED		1	1
16 - 20 YEARS		1	1	<b>Distance Between Victim/Offender Mistaken for Game</b>			
21 - 50 YEARS		11	11	26 - 75 FEET		2	2
<b>Offender Age</b>				76 - 150 FEET		11	11
12 - 15 YEARS		1	1	<b>Color Worn by Victim Mistaken for Game</b>			
16 - 20 YEARS		2	2	FL. ORANGE		5	5
21 - 50 YEARS		5	5	CAMOUFLAGE		8	8
OVER 50 YEARS		5	5	<b>Fluorescent Orange Visible to Offender?</b>			
NOT REPORTED		1	1	YES		1	1
<b>Light Conditions</b>				NO		4	4
DAWN		1	1	<b>Victim Position</b>			
DAYLIGHT		13	13	STANDING		3	3
<b>Weather Conditions</b>				WALKING/RUNNING		2	2
CLEAR		5	5	SITTING		8	8
OVERCAST		4	4	OTHER/UNKNOWN		1	1
RAIN		4	4	<b>Victim Was</b>			
SNOW		1	1	HUNTING		13	13
<b>Cause of Incident</b>				OTHER		1	1
VICTIM IN LINE OF FIRE		1	1	<b>Offender Was</b>			
SHOT FOR GAME		13	13	HUNTING		14	14
<b>Place of Incident</b>				<b>Caliber</b>			
WOODLAND		14	14	CENTERFIRE		1	1
<b>Cover</b>				<b>Gauge</b>			
DENSE		6	6	12		10	10
LIGHT		8	8	16		1	1
<b>Victim Experience</b>				20		1	1
2 - 5 YEARS		2	2	UNKNOWN		1	1
6 - 10 YEARS		2	2				
OVER 10 YEARS		10	10				

These 14 incidents represent 15.22% of the 92 incidents reported during the period.

# Hunting Related Shooting Incidents from 1/1/1997 to 12/31/1997

## INCIDENTS INVOLVING F TURKEY

### Hunting Related Shooting Incident Reporting

HRSIS Report: 02

<i>Shot Size</i>	<i>Non-</i>			<i>Non-</i>		
	<i>Fatal</i>	<i>Fatal</i>	<i>Total</i>	<i>Fatal</i>	<i>Fatal</i>	<i>Total</i>
2		1	1			
4		5	5			
5		2	2			
6		4	4			
UNKNOWN		1	1			

These 14 incidents represent 15.22% of the 92 incidents reported during the period.

## Hunting Related Shooting Incidents from 1/1/1998 to 12/31/1998

### INCIDENTS INVOLVING FALL TURKEY

**Hunting Related Shooting Incident Reporting**

HRSIS Report: 02

		<i>Non-</i>				<i>Non-</i>	
	<i>Fatal</i>	<i>Fatal</i>	<i>Total</i>		<i>Fatal</i>	<i>Fatal</i>	<i>Total</i>
<b>Number of Incidents</b>				<b>Offender Experience Hunting Specie</b>			
**** TOTALS ****	2	7	9	2 - 5 YEARS		1	1
<b>Injury Type</b>				6 - 10 YEARS		3	3
INFLECTED BY OTHERS	2	7	9	OVER 10 YEARS	2	2	4
<b>Sporting Arm Used</b>				NOT REPORTED		1	1
SHOTGUN	1	7	8	<b>Distance Between Victim/Offender Mistaken for Game</b>			
RIFLE	1		1	26 - 75 FEET		1	1
<b>Species Hunted</b>				76 - 150 FEET		5	5
TURKEY	2	7	9	151 - 300 FEET	2		2
<b>Victim Age</b>				<b>Color Worn by Victim Mistaken for Game</b>			
12 - 15 YEARS	1		1	FL. ORANGE		1	1
21 - 50 YEARS		3	3	CAMOUFLAGE	2	5	7
OVER 50 YEARS	1	4	5	<b>Fluorescent Orange Visible to Offender?</b>			
<b>Offender Age</b>				NO		1	1
21 - 50 YEARS	2	4	6	<b>Victim Position</b>			
OVER 50 YEARS		2	2	STANDING		3	3
NOT REPORTED		1	1	WALKING/RUNNING		3	3
<b>Light Conditions</b>				SITTING		1	1
DAYLIGHT	2	6	8	OTHER/UNKNOWN	2		2
DUSK		1	1	<b>Victim Was</b>			
<b>Weather Conditions</b>				HUNTING	2	7	9
CLEAR		4	4	<b>Offender Was</b>			
OVERCAST	1	3	4	HUNTING	2	7	9
RAIN	1		1	<b>Caliber</b>			
<b>Cause of Incident</b>				CENTERFIRE	1		1
VICTIM IN LINE OF FIRE		1	1	<b>Gauge</b>			
SHOT FOR GAME	2	6	8	12	1	4	5
<b>Place of Incident</b>				20		1	1
WOODLAND	2	7	9	410		1	1
<b>Cover</b>				UNKNOWN		1	1
DENSE	2	4	6	<b>Shot Size</b>			
LIGHT		3	3	4		3	3
<b>Victim Experience</b>				5		1	1
UNDER 2 YEARS	1		1	6		2	2
OVER 10 YEARS	1	7	8	00	1		1
<b>Offender Experience</b>				UNKNOWN		1	1
2 - 5 YEARS		1	1				
OVER 10 YEARS	2	5	7				
NOT REPORTED		1	1				

These 9 incidents represent 9.89% of the 91 incidents reported during the period.

## Hunting Related Shooting Incidents from 1/1/1999 to 12/31/1999 INCIDENTS INVOLVING FALL TURKEY

**Hunting Related Shooting Incident Reporting**

**HRSIS Report: 02**

		<i>Non-</i>				<i>Non-</i>	
	<i>Fatal</i>	<i>Fatal</i>	<i>Total</i>		<i>Fatal</i>	<i>Fatal</i>	<i>Total</i>
<b>Number of Incidents</b>				<b>Offender Experience</b>			
**** TOTALS ****	1	15	16	2 - 5 YEARS		2	2
<b>Injury Type</b>				6 - 10 YEARS		2	2
INFLECTED BY OTHERS	1	15	16	NOT REPORTED		2	2
<b>Sporting Arm Used</b>				OVER 10 YEARS	1	9	10
SHOTGUN		14	14	<b>Offender Experience Hunting Specie</b>			
RIFLE	1	1	2	2 - 5 YEARS		4	4
<b>Species Hunted</b>				6 - 10 YEARS		5	5
TURKEY	1	15	16	OVER 10 YEARS	1	2	3
<b>Victim Age</b>				NOT REPORTED		4	4
16 - 20 YEARS		3	3	<b>Distance Between Victim/Offender Mistaken for Game</b>			
21 - 50 YEARS		10	10	26 - 75 FEET		1	1
OVER 50 YEARS	1	2	3	76 - 150 FEET	1	7	8
<b>Offender Age</b>				151 - 300 FEET		2	2
16 - 20 YEARS		3	3	<b>Color Worn by Victim Mistaken for Game</b>			
21 - 50 YEARS	1	7	8	FL. ORANGE		1	1
NOT REPORTED		2	2	CAMOUFLAGE	1	7	8
OVER 50 YEARS		3	3	OTHER COLOR		2	2
<b>Light Conditions</b>				<b>Fluorescent Orange Visible to Offender?</b>			
DAWN		1	1	NO		1	1
DAYLIGHT	1	13	14	<b>Victim Position</b>			
DARK		1	1	STANDING		5	5
<b>Weather Conditions</b>				WALKING/RUNNING	1	2	3
CLEAR	1	10	11	SITTING		7	7
OVERCAST		4	4	OTHER/UNKNOWN		1	1
RAIN		1	1	<b>Victim Was</b>			
<b>Cause of Incident</b>				HUNTING	1	15	16
RICOCHET		1	1	<b>Offender Was</b>			
VICTIM IN LINE OF FIRE		3	3	HUNTING	1	14	15
SHOT FOR GAME	1	10	11	UNKNOWN		1	1
OTHER		1	1	<b>Caliber</b>			
<b>Place of Incident</b>				CENTERFIRE	1		1
FIELD		1	1	RIMFIRE		1	1
WOODLAND	1	14	15	<b>Gauge</b>			
<b>Cover</b>				12		13	13
DENSE		8	8	UNKNOWN		1	1
LIGHT	1	7	8	<b>Shot Size</b>			
<b>Victim Experience</b>				4		8	8
2 - 5 YEARS		2	2	5		1	1
6 - 10 YEARS		2	2	6		2	2
OVER 10 YEARS	1	11	12	OTHER		1	1
				UNKNOWN		2	2

These 16 incidents represent 19.28% of the 83 incidents reported during the period.

## Hunting Related Shooting Incidents from 1/1/2000 to 12/31/2000

### INCIDENTS INVOLVING FALL TURKEY

**Hunting Related Shooting Incident Reporting**

HRSIS Report: 02

		<i>Non-</i>				<i>Non-</i>	
	<i>Fatal</i>	<i>Fatal</i>	<i>Total</i>		<i>Fatal</i>	<i>Fatal</i>	<i>Total</i>
<b>Number of Incidents</b>				<b>Offender Experience Hunting Specie</b>			
**** TOTALS ****		10	10	UNDER 2 YEARS		1	1
<b>Injury Type</b>				2 - 5 YEARS		1	1
INFLECTED BY OTHERS		10	10	6 - 10 YEARS		2	2
<b>Sporting Arm Used</b>				OVER 10 YEARS		6	6
SHOTGUN	9	9		<b>Distance Between Victim/Offender Mistaken for Game</b>			
RIFLE	1	1		76 - 150 FEET		5	5
<b>Species Hunted</b>				151 - 300 FEET		1	1
TURKEY	10	10		<b>Color Worn by Victim Mistaken for Game</b>			
<b>Victim Age</b>				FL. ORANGE		1	1
16 - 20 YEARS		1	1	CAMOUFLAGE		5	5
21 - 50 YEARS		6	6	<b>Fluorescent Orange Visible to Offender?</b>			
OVER 50 YEARS		3	3	NO		1	1
<b>Offender Age</b>				<b>Victim Position</b>			
12 - 15 YEARS		1	1	STANDING		4	4
16 - 20 YEARS		2	2	SITTING		6	6
21 - 50 YEARS		4	4	<b>Victim Was</b>			
OVER 50 YEARS		3	3	HUNTING		10	10
<b>Light Conditions</b>				<b>Offender Was</b>			
DAYLIGHT	10	10		HUNTING		10	10
<b>Weather Conditions</b>				<b>Caliber</b>			
CLEAR		6	6	RIMFIRE		1	1
OVERCAST		3	3	<b>Gauge</b>			
FOG		1	1	12		7	7
<b>Cause of Incident</b>				16		1	1
VICTIM IN LINE OF FIRE		4	4	20		1	1
SHOT FOR GAME		6	6	<b>Shot Size</b>			
<b>Place of Incident</b>				4		3	3
WOODLAND	10	10		5		1	1
<b>Cover</b>				6		5	5
DENSE		4	4				
LIGHT		6	6				
<b>Victim Experience</b>							
2 - 5 YEARS		1	1				
6 - 10 YEARS		1	1				
OVER 10 YEARS		8	8				
<b>Offender Experience</b>							
2 - 5 YEARS		2	2				
6 - 10 YEARS		1	1				
OVER 10 YEARS		7	7				

These 10 incidents represent 13.7% of the 73 incidents reported during the period.

Thursday, December 06, 2001

Page 1 of 1

## Hunting Related Shooting Incidents from 1/1/2001 to 12/31/2001 INCIDENTS INVOLVING FALL TURKEY

**Hunting Related Shooting Incident Reporting**

**HRSIS Report: 02**

		<i>Non-</i>				<i>Non-</i>	
	<i>Fatal</i>	<i>Fatal</i>	<i>Total</i>		<i>Fatal</i>	<i>Fatal</i>	<i>Total</i>
<b>Number of Incidents</b>				<b>Victim Experience</b>			
**** TOTALS ****		13	13	UNDER 2 YEARS		1	1
<b>Injury Type</b>				2 - 5 YEARS		2	2
SELF-INFLICTED		1	1	OVER 10 YEARS		10	10
INFLECTED BY OTHERS		12	12	<b>Offender Experience</b>			
<b>Sporting Arm Used</b>				2 - 5 YEARS		2	2
SHOTGUN		12	12	6 - 10 YEARS		1	1
HANDGUN		1	1	OVER 10 YEARS		8	8
<b>Species Hunted</b>				NOT REPORTED		2	2
TURKEY		13	13	<b>Offender Experience Hunting Specie</b>			
<b>Victim Age</b>				UNDER 2 YEARS		1	1
12 - 15 YEARS		2	2	2 - 5 YEARS		2	2
16 - 20 YEARS		1	1	6 - 10 YEARS		2	2
21 - 50 YEARS		6	6	OVER 10 YEARS		6	6
OVER 50 YEARS		4	4	NOT REPORTED		2	2
<b>Offender Age</b>				<b>Distance Between Victim/Offender Mistaken for Game</b>			
12 - 15 YEARS		1	1	26 - 75 FEET		1	1
21 - 50 YEARS		6	6	76 - 150 FEET		8	8
OVER 50 YEARS		4	4	<b>Color Worn by Victim Mistaken for Game</b>			
NOT REPORTED		2	2	FL. ORANGE		2	2
<b>Light Conditions</b>				CAMOUFLAGE		7	7
DAWN		1	1	<b>Fluorescent Orange Visible to Offender?</b>			
DAYLIGHT		11	11	NO		2	2
DUSK		1	1	<b>Victim Position</b>			
<b>Weather Conditions</b>				STANDING		3	3
CLEAR		8	8	WALKING/RUNNING		2	2
OVERCAST		4	4	SITTING		8	8
SNOW		1	1	<b>Victim Was</b>			
<b>Cause of Incident</b>				HUNTING		12	12
SPORT ARM DANGEROUS POS		1	1	OTHER		1	1
VICTIM IN LINE OF FIRE		3	3	<b>Offender Was</b>			
SHOT FOR GAME		9	9	HUNTING		13	13
<b>Place of Incident</b>				<b>Caliber</b>			
WOODLAND		12	12	CENTERFIRE		1	1
ROAD/HIGHWAY		1	1	<b>Gauge</b>			
<b>Cover</b>				12		9	9
DENSE		9	9	16		1	1
LIGHT		4	4	UNKNOWN		2	2

These 13 incidents represent 20.97% of the 62 incidents reported during the period.

**Hunting Related Shooting Incidents from 1/1/2001 to 12/31/2001**  
**INCIDENTS INVOLVING F TURKEY**

**Hunting Related Shooting Incident Reporting**

**HRSIS Report: 02**

<i>Shot Size</i>	<i>Non-</i>			<i>Non-</i>		
	<i>Fatal</i>	<i>Fatal</i>	<i>Total</i>	<i>Fatal</i>	<i>Fatal</i>	<i>Total</i>
4		6	6			
5		2	2			
6		2	2			
UNKNOWN		2	2			

**These 13 incidents represent 20.97% of the 62 incidents reported during the period.**



# Hunting Related Shooting Incidents from 01/01/2002 to 12/31/2002

## INCIDENTS INVOLVING F TURKEY

Hunting Related Shooting Incident Reporting System

HRSIS Report: 02

	<i>Non-Fatal</i>	<i>Total</i>
<b>Number of Incidents</b>		
***** TOTALS *****	15	15
<b>Injury Type</b>		
SELF-INFLICTED	1	1
INFLECTED BY OTHERS	14	14
<b>Sporting Arm Used</b>		
SHOTGUN	11	11
RIFLE	4	4
<b>Species Hunted</b>		
TURKEY	15	15
<b>Victim Age</b>		
16 - 20 YEARS	4	4
21 - 50 YEARS	6	6
OVER 50 YEARS	5	5
<b>Offender Age</b>		
16 - 20 YEARS	2	2
21 - 50 YEARS	8	8
OVER 50 YEARS	5	5
<b>Light Conditions</b>		
DAWN	2	2
DAYLIGHT	13	13
<b>Weather Conditions</b>		
CLEAR	6	6
OVERCAST	5	5
RAIN	2	2
SNOW	2	2
<b>Cause of Incident</b>		
UNINTENTIONAL DISCHARGE	1	1
VICTIM IN LINE OF FIRE	4	4
SHOT FOR GAME	10	10
<b>Place of Incident</b>		
WOODLAND	14	14
ROAD/HIGHWAY	1	1
<b>Cover</b>		
DENSE	9	9
LIGHT	6	6
<b>Victim Experience</b>		
UNDER 2 YEARS	1	1
2 - 5 YEARS	2	2
6 - 10 YEARS	2	2
OVER 10 YEARS	10	10

	<i>Non-Fatal</i>	<i>Total</i>
<b>Offender Experience</b>		
2 - 5 YEARS	1	1
6 - 10 YEARS	1	1
OVER 10 YEARS	13	13
<b>Offender Experience Hunting Specie</b>		
2 - 5 YEARS	3	3
6 - 10 YEARS	2	2
OVER 10 YEARS	10	10
<b>Distance Between Victim/Offender Mistaken for Game</b>		
26 - 75 FEET	2	2
76 - 150 FEET	3	3
151 - 300 FEET	4	4
OVER 300 FEET	1	1
<b>Color Worn by Victim Mistaken for Game</b>		
FL. ORANGE	3	3
CAMOUFLAGE	6	6
OTHER COLOR	1	1
<b>Fluorescent Orange Visible to Offender?</b>		
NO	3	3
<b>Victim Position</b>		
STANDING	5	5
WALKING/RUNNING	3	3
SITTING	6	6
OTHER/UNKNOWN	1	1
<b>Victim Was</b>		
HUNTING	15	15
<b>Offender Was</b>		
HUNTING	15	15
<b>Caliber</b>		
CENTERFIRE	2	2
RIMFIRE	2	2
<b>Gauge</b>		
10	1	1
12	8	8
20	2	2
<b>Shot Size</b>		
2	1	1
4	4	4
6	3	3
7.5	1	1
UNKNOWN	2	2

These 15 incidents represent 22.06% of the 68 incidents reported during the period.

# Hunting Related Shooting Incidents from 01/01/2003 to 12/31/2003

## INCIDENTS INVOLVING F TURKEY

Hunting Related Shooting Incident Reporting System

HRSIS Report: 02

	<i>Non-Fatal</i>		<i>Non-Fatal</i>	
	<i>Fatal</i>	<i>Total</i>	<i>Fatal</i>	<i>Total</i>
<b>Number of Incidents</b>				
**** TOTALS ****	2	2		
<b>Injury Type</b>				
INFLECTED BY OTHERS	2	2		
<b>Sporting Arm Used</b>				
SHOTGUN	2	2		
<b>Species Hunted</b>				
TURKEY	2	2		
<b>Victim Age</b>				
OVER 50 YEARS	2	2		
<b>Offender Age</b>				
21 - 50 YEARS	2	2		
<b>Light Conditions</b>				
DAYLIGHT	2	2		
<b>Weather Conditions</b>				
CLEAR	1	1		
OVERCAST	1	1		
<b>Cause of Incident</b>				
SHOT FOR GAME	2	2		
<b>Place of Incident</b>				
WOODLAND	2	2		
<b>Cover</b>				
DENSE	2	2		
<b>Victim Experience</b>				
OVER 10 YEARS	2	2		
<b>Offender Experience</b>				
OVER 10 YEARS	2	2		
<b>Offender Experience Hunting Specie</b>				
OVER 10 YEARS	2	2		
<b>Distance Between Victim/Offender Mistaken for Game</b>				
76 - 150 FEET	2	2		
<b>Color Worn by Victim Mistaken for Game</b>				
CAMOUFLAGE	2	2		
<b>Victim Position</b>				
WALKING/RUNNING	2	2		
<b>Victim Was</b>				
HUNTING			1	1
OTHER			1	1
<b>Offender Was</b>				
HUNTING			2	2
<b>Gauge</b>				
12			2	2
<b>Shot Size</b>				
4			1	1
6			1	1

These 2 incidents represent 3.51% of the 57 incidents reported during the period.

# Hunting Related Shooting Incidents from 01/01/2004 to 12/31/2004

## INCIDENTS INVOLVING F TURKEY

Hunting Related Shooting Incident Reporting System

HRSIS Report: 02

	<i>Non-Fatal</i>		<i>Total</i>		<i>Non-Fatal</i>		<i>Total</i>
<b>Number of Incidents</b>				<b>Offender Experience Hunting Specie</b>			
***** TOTALS *****	5		5	UNDER 2 YEARS	1		1
<b>Injury Type</b>				<b>Distance Between Victim/Offender Mistaken for Game</b>			
INFLECTED BY OTHERS	5		5	76 - 150 FEET	1		1
<b>Sporting Arm Used</b>				<b>Color Worn by Victim Mistaken for Game</b>			
SHOTGUN	4		4	FL. ORANGE	2		2
RIFLE	1		1	CAMOUFLAGE	2		2
<b>Species Hunted</b>				<b>Fluorescent Orange Visible to Offender?</b>			
TURKEY	5		5	NO	2		2
<b>Victim Age</b>				<b>Victim Position</b>			
21 - 50 YEARS	4		4	STANDING	2		2
OVER 50 YEARS	1		1	WALKING/RUNNING	1		1
<b>Offender Age</b>				<b>Victim Was</b>			
12 - 15 YEARS	1		1	HUNTING	5		5
21 - 50 YEARS	2		2	<b>Offender Was</b>			
NOT REPORTED	1		1	HUNTING	5		5
OVER 50 YEARS	1		1	<b>Caliber</b>			
<b>Light Conditions</b>				<b>Gauge</b>			
DAWN	1		1	12	3		3
DAYLIGHT	4		4	UNKNOWN	1		1
<b>Weather Conditions</b>				<b>Shot Size</b>			
CLEAR	3		3	4	2		2
OVERCAST	2		2	6	1		1
<b>Cause of Incident</b>				<b>UNKNOWN</b>			
VICTIM IN LINE OF FIRE	1		1	1	1		1
SHOT FOR GAME	4		4	<b>Place of Incident</b>			
<b>Place of Incident</b>				<b>WOODLAND</b>			
<b>Cover</b>				<b>5</b>			
DENSE	2		2	<b>5</b>			
LIGHT	3		3	<b>Cover</b>			
<b>Victim Experience</b>				<b>DENSE</b>			
OVER 10 YEARS	5		5	<b>2</b>			
<b>Offender Experience</b>				<b>LIGHT</b>			
2 - 5 YEARS	1		1	<b>3</b>			
NOT REPORTED	1		1	<b>Victim Experience</b>			
OVER 10 YEARS	3		3	<b>OVER 10 YEARS</b>			

These 5 incidents represent 8.93% of the 56 incidents reported during the period.

# Hunting Related Shooting Incidents from 01/01/2005 to 12/31/2005

## INCIDENTS INVOLVING F TURKEY

Hunting Related Shooting Incident Reporting System

HRSIS Report: 02

	<i>Non-Fatal</i>		<i>Non-Fatal</i>	
	<i>Fatal</i>	<i>Total</i>	<i>Fatal</i>	<i>Total</i>
<b>Number of Incidents</b>				
**** TOTALS ****	2	2		
<b>Injury Type</b>				
INFLECTED BY OTHERS	2	2		
<b>Sporting Arm Used</b>				
SHOTGUN	1	1		
RIFLE	1	1		
<b>Species Hunted</b>				
TURKEY	2	2		
<b>Victim Age</b>				
16 - 20 YEARS	1	1		
21 - 50 YEARS	1	1		
<b>Offender Age</b>				
16 - 20 YEARS	1	1		
OVER 50 YEARS	1	1		
<b>Light Conditions</b>				
DAYLIGHT	2	2		
<b>Weather Conditions</b>				
CLEAR	1	1		
OVERCAST	1	1		
<b>Cause of Incident</b>				
SHOT FOR GAME	2	2		
<b>Place of Incident</b>				
WOODLAND	2	2		
<b>Cover</b>				
LIGHT	2	2		
<b>Victim Experience</b>				
2 - 5 YEARS	1	1		
OVER 10 YEARS	1	1		
<b>Offender Experience</b>				
6 - 10 YEARS	1	1		
OVER 10 YEARS	1	1		
<b>Offender Experience Hunting Specie</b>				
2 - 5 YEARS	1	1		
OVER 10 YEARS	1	1		
<b>Distance Between Victim/Offender Mistaken for Game</b>				
76 - 150 FEET	2	2		
<b>Color Worn by Victim Mistaken for Game</b>				
CAMOUFLAGE			1	1
OTHER COLOR			1	1
<b>Victim Position</b>				
SITTING			1	1
OTHER/UNKNOWN			1	1
<b>Victim Was</b>				
HUNTING			2	2
<b>Offender Was</b>				
HUNTING			2	2
<b>Caliber</b>				
CENTERFIRE			1	1
<b>Gauge</b>				
12			1	1
<b>Shot Size</b>				
6			1	1

These 2 incidents represent 4.26% of the 47 incidents reported during the period.

# Hunting Related Shooting Incidents from 01/01/2006 to 12/31/2006

## INCIDENTS INVOLVING F TURKEY

Hunting Related Shooting Incident Reporting System

HRSIS Report: 02

	<i>Non-Fatal</i>	<i>Fatal</i>	<i>Total</i>
<b>Number of Incidents</b>			
**** TOTALS ****	4	4	
<b>Injury Type</b>			
INFLECTED BY OTHERS	4	4	
<b>Sporting Arm Used</b>			
SHOTGUN	4	4	
<b>Species Hunted</b>			
TURKEY	4	4	
<b>Victim Age</b>			
21 - 50 YEARS	4	4	
<b>Offender Age</b>			
21 - 50 YEARS	2	2	
OVER 50 YEARS	2	2	
<b>Light Conditions</b>			
DAWN	3	3	
DAYLIGHT	1	1	
<b>Weather Conditions</b>			
CLEAR	2	2	
OVERCAST	2	2	
<b>Cause of Incident</b>			
VICTIM IN LINE OF FIRE	2	2	
SHOT FOR GAME	2	2	
<b>Place of Incident</b>			
FIELD	1	1	
WOODLAND	3	3	
<b>Cover</b>			
LIGHT	4	4	
<b>Victim Experience</b>			
6 - 10 YEARS	1	1	
OVER 10 YEARS	3	3	
<b>Offender Experience</b>			
OVER 10 YEARS	4	4	
<b>Offender Experience Hunting Specie</b>			
OVER 10 YEARS	4	4	
<b>Distance Between Victim/Offender Mistaken for Game</b>			
76 - 150 FEET	2	2	
<b>Color Worn by Victim Mistaken for Game</b>			
CAMOUFLAGE	2	2	

	<i>Non-Fatal</i>	<i>Fatal</i>	<i>Total</i>
<b>Victim Position</b>			
STANDING	2	2	
SITTING	2	2	
<b>Victim Was</b>			
HUNTING	4	4	
<b>Offender Was</b>			
HUNTING	4	4	
<b>Gauge</b>			
12	4	4	
<b>Shot Size</b>			
4	2	2	
5	1	1	
6	1	1	

These 4 incidents represent 8.7% of the 46 incidents reported during the period.

# Hunting Related Shooting Incidents from 01/01/2007 to 12/31/2007

## INCIDENTS INVOLVING F TURKEY

Hunting Related Shooting Incident Reporting System

HRSIS Report: 02

		<i>Non- Fatal</i>	<i>Fatal</i>	<i>Total</i>		<i>Non- Fatal</i>	<i>Fatal</i>	<i>Total</i>	
<b><i>Number of Incidents</i></b>					<b><i>Victim Was</i></b>				
**** TOTALS ****			1	1	HUNTING			1 1	
<b><i>Injury Type</i></b>					<b><i>Offender Was</i></b>				
INFLECTED BY OTHERS			1	1	HUNTING			1 1	
<b><i>Sporting Arm Used</i></b>					<b><i>Caliber</i></b>				
RIFLE			1	1	CENTERFIRE			1 1	
<b><i>Species Hunted</i></b>									
TURKEY			1	1					
<b><i>Victim Age</i></b>									
21 - 50 YEARS			1	1					
<b><i>Offender Age</i></b>									
21 - 50 YEARS			1	1					
<b><i>Light Conditions</i></b>									
DAYLIGHT			1	1					
<b><i>Weather Conditions</i></b>									
CLEAR			1	1					
<b><i>Cause of Incident</i></b>									
SHOT FOR GAME			1	1					
<b><i>Place of Incident</i></b>									
WOODLAND			1	1					
<b><i>Cover</i></b>									
DENSE			1	1					
<b><i>Victim Experience</i></b>									
OVER 10 YEARS			1	1					
<b><i>Offender Experience</i></b>									
OVER 10 YEARS			1	1					
<b><i>Offender Experience Hunting Specie</i></b>									
OVER 10 YEARS			1	1					
<b><i>Distance Between Victim/Offender Mistaken for Game</i></b>									
151 - 300 FEET			1	1					
<b><i>Color Worn by Victim Mistaken for Game</i></b>									
FL. ORANGE			1	1					
<b><i>Fluorescent Orange Visible to Offender?</i></b>									
NO			1	1					
<b><i>Victim Position</i></b>									
STANDING			1	1					

This 1 incident represents 3.03% of the 33 incidents reported during the period.

# Hunting Related Shooting Incidents from 01/01/2008 to 12/31/2008

## INCIDENTS INVOLVING F TURKEY

Hunting Related Shooting Incident Reporting System

HRSIS Report: 02

		<i>Non- Fatal</i>	<i>Fatal</i>	<i>Total</i>			<i>Non- Fatal</i>	<i>Fatal</i>	<i>Total</i>
<b>Number of Incidents</b>					<b>Victim Position</b>				
**** TOTALS ****			2	2	SITTING		1		1
<b>Injury Type</b>					<b>OTHER/UNKNOWN</b>				
INFLECTED BY OTHERS			2	2			1		1
<b>Sporting Arm Used</b>					<b>Victim Was</b>				
SHOTGUN			2	2	HUNTING		2		2
<b>Species Hunted</b>					<b>Offender Was</b>				
TURKEY			2	2	HUNTING		2		2
<b>Victim Age</b>					<b>Gauge</b>				
OVER 50 YEARS			2	2	12		2		2
<b>Offender Age</b>					<b>Shot Size</b>				
OVER 50 YEARS			2	2	5		1		1
<b>Light Conditions</b>					<b>6</b>				
DAYLIGHT			2	2			1		1
<b>Weather Conditions</b>									
CLEAR			2	2					
<b>Cause of Incident</b>									
SHOT FOR GAME			2	2					
<b>Place of Incident</b>									
WOODLAND			2	2					
<b>Cover</b>									
DENSE			1	1					
LIGHT			1	1					
<b>Victim Experience</b>									
OVER 10 YEARS			2	2					
<b>Offender Experience</b>									
OVER 10 YEARS			2	2					
<b>Offender Experience Hunting Specie</b>									
OVER 10 YEARS			2	2					
<b>Distance Between Victim/Offender Mistaken for Game</b>									
26 - 75 FEET			1	1					
76 - 150 FEET			1	1					
<b>Color Worn by Victim Mistaken for Game</b>									
FL. ORANGE			1	1					
CAMOUFLAGE			1	1					
<b>Fluorescent Orange Visible to Offender?</b>									
NO			1	1					

These 2 incidents represent 5.71% of the 35 incidents reported during the period.

# Hunting Related Shooting Incidents from 01/01/2009 to 12/31/2009

## INCIDENTS INVOLVING F TURKEY

Hunting Related Shooting Incident Reporting System

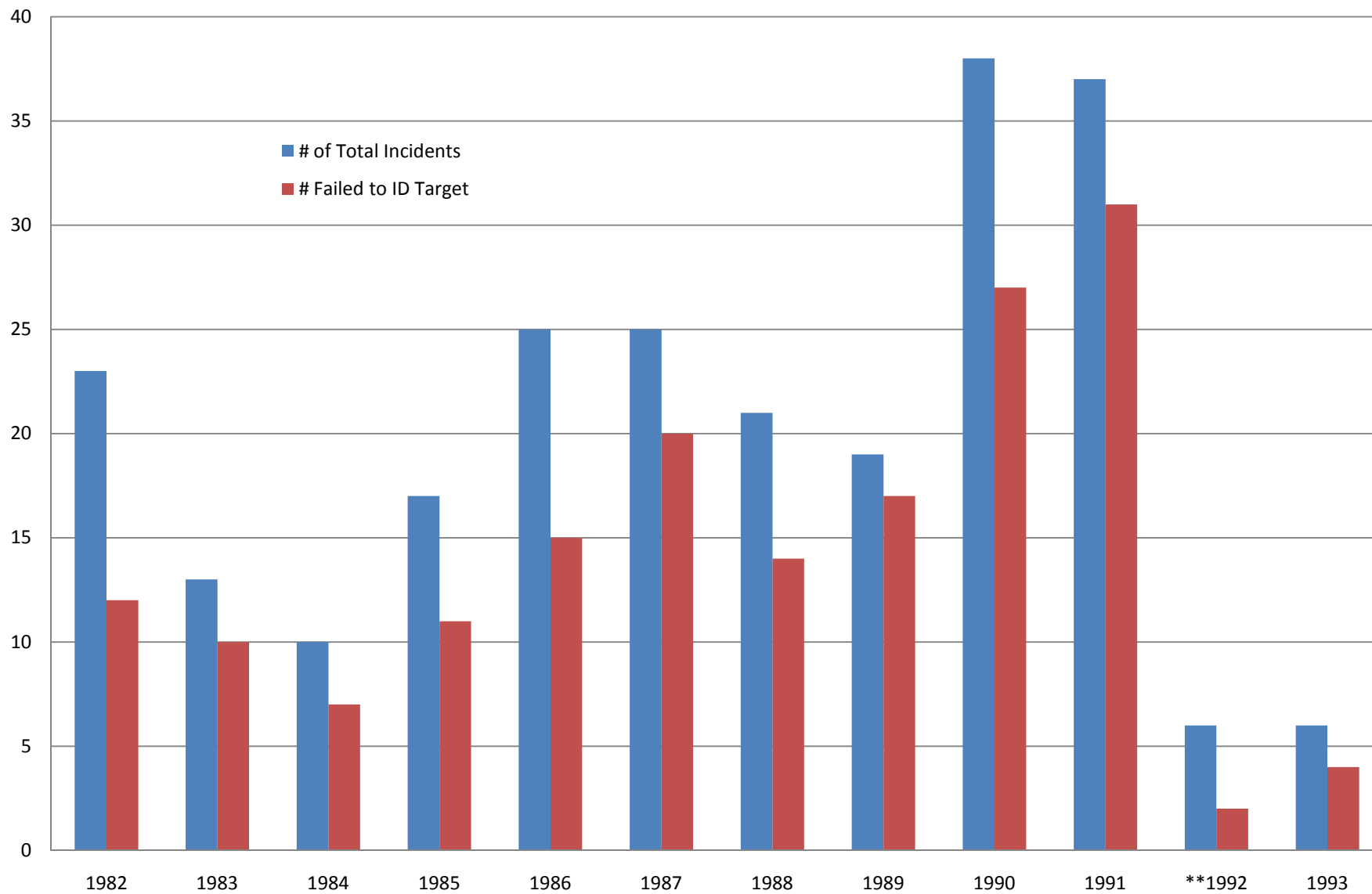
HRSIS Report: 02

	<i>Non-Fatal</i>		<i>Non-Fatal</i>	
	<i>Fatal</i>	<i>Total</i>	<i>Fatal</i>	<i>Total</i>
<b>Number of Incidents</b>				
***** TOTALS *****	4	4		
<b>Injury Type</b>				
INFLECTED BY OTHERS	4	4		
<b>Sporting Arm Used</b>				
SHOTGUN	3	3		
RIFLE	1	1		
<b>Species Hunted</b>				
TURKEY	4	4		
<b>Victim Age</b>				
12 - 15 YEARS	1	1		
21 - 50 YEARS	1	1		
OVER 50 YEARS	2	2		
<b>Offender Age</b>				
21 - 50 YEARS	2	2		
OVER 50 YEARS	2	2		
<b>Light Conditions</b>				
DAYLIGHT	4	4		
<b>Weather Conditions</b>				
CLEAR	2	2		
OVERCAST	2	2		
<b>Cause of Incident</b>				
SHOT FOR GAME	4	4		
<b>Place of Incident</b>				
FIELD	1	1		
WOODLAND	3	3		
<b>Cover</b>				
LIGHT	4	4		
<b>Victim Experience</b>				
2 - 5 YEARS	1	1		
OVER 10 YEARS	3	3		
<b>Offender Experience</b>				
OVER 10 YEARS	4	4		
<b>Offender Experience Hunting Specie</b>				
2 - 5 YEARS	1	1		
OVER 10 YEARS	3	3		
<b>Distance Between Victim/Offender Mistaken for Game</b>				
76 - 150 FEET	1	1		
151 - 300 FEET	2	2		
<b>Color Worn by Victim Mistaken for Game</b>				
CAMOUFLAGE			2	2
OTHER COLOR			2	2
<b>Victim Position</b>				
STANDING			1	1
WALKING/RUNNING			2	2
OTHER/UNKNOWN			1	1
<b>Victim Was</b>				
HUNTING			3	3
TRAPPING			1	1
<b>Offender Was</b>				
HUNTING			4	4
<b>Caliber</b>				
CENTERFIRE			1	1
<b>Gauge</b>				
12			3	3
<b>Shot Size</b>				
4			2	2
5			1	1

These 4 incidents represent 12.12% of the 33 incidents reported during the period.



## Pennsylvania Fall Turkey HRSIs 1982-1993



## Pennsylvania Fall Turkey HRSIs 1994-2009

