



# Feet First!

Pennsylvania is home currently to 480 species of wild birds and mammals. Many are familiar to us. Others are not. But when you see only a portion of an animal, it immediately become harder to identify. So how well do you really know the wild birds and mammals of our fields and forests? Could you pick them out of a line-up? For many people that might not be much of a challenge. But what if all you could see was their feet? Do you think you'd still be able to get the job done, or ace the test? The puzzle below offers you a chance to show off your species identification skills. There are eight types of feet below. All belong to different animals. Your task is to see these species through their feet and identify them. Are you up to the challenge? Good luck!



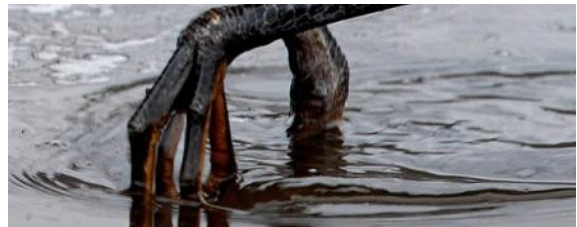
1. \_\_\_\_\_



2. \_\_\_\_\_



3. \_\_\_\_\_



4. \_\_\_\_\_



5. \_\_\_\_\_



6. \_\_\_\_\_



7. \_\_\_\_\_



8. \_\_\_\_\_



# Answers: Feet First

Sometimes seeing only the paw or foot of one of our wild birds and mammals can cloud your ability to identify an animal you surely know. It happens because we usually identify animals by their size and body, not just their feet. To help you see these animals that own the feet showcased on the quiz, check out the images below. We promise, you'll get to the bottom of it and connect with wildlife!

**Fox Squirrel**



**Ruffed Grouse**



**Groundhog**

**Great Blue Heron**



**Muskrat**

**River Otter**



**Wood Duck**



**Snowshoe Hare**