



Wildlife on WiFi

Wildlife Forensics
Weekly Lesson Plan





About *Wildlife on WiFi*

About *Wildlife on WiFi*

Wildlife on WiFi (“*WoW*”) seeks to connect Pennsylvania residents to their state’s wildlife from anywhere. To achieve this, *WoW* provides innovative online learning opportunities, virtual lessons and educational resources about wildlife and its conservation.

The *Wildlife on WiFi* online education hub features 50 lessons, activities, videos, story time readings, watchable wildlife livestreams, and more!

To connect with *Wildlife on WiFi*

Wildlife on WiFi is available online at <http://bit.ly/PGCWildlifeOnWiFi>

For questions or to schedule a virtual lesson, please contact wildlifeonwifi@pa.gov.





Wildlife on WiFi Weekly Lesson Plans

About *Wildlife on WiFi* Weekly Lesson Plans

Wildlife on WiFi weekly lesson plans provide day-by-day activities to keep children learning, thinking, and getting outside! Designed for grades 5 – 9, these plans can be adapted by educators to suit their needs and grade levels.

Educators and parents may find them ideal to support at home and virtual learning, but they may also be used during regular in-person or partial in-person teaching.

Live virtual lessons from a Game Commission educator are a great way to cap off a wildlife week. To inquire about a virtual lesson, please contact wildlifeonwifi@pa.gov.





Wildlife Forensics Weekly Lesson Plan

Overview: Wildlife forensics is an exciting part of solving crimes related to duties of a Game Warden. Wildlife cannot speak for itself, but when a crime has been committed towards wild animals, the Game Warden, using forensic evidence and crime scene investigation, can sometimes speak for the animal and bring the violator to justice. These videos and activities have been created to give you a glimpse of what it's like to be a wildlife forensics investigator. This weekly lesson plan reinforces critical thinking and observational skills. Activities are generally suitable for grades 5–9 with teacher adaptations based on age and teaching objectives.

Day	Recommended Activities
Monday	Introduction to Wildlife Forensics video, Forensic Observation video, Pre-test activity
Tuesday	Building your own Forensics Kit, Forensics Kit activities
Wednesday	The Case of the Phantom Feather
Thursday	The Case of the Barn Bucks
Friday	Forensics Reading & closing or Wildlife Professional Virtual Lesson



Day 1: Wildlife Forensics Introduction

Day 1 Activities

Begin the week having students learn about Wildlife Forensics by watching the [Introduction video](#). During the video, have students complete the [Wildlife Forensics Pre-test](#). Additionally, challenge students' observational skills by having them watch the [Forensic Observations](#) video and the corresponding [activity](#) video.



Access activities by clicking the links in blue above.

Wildlife Forensics PRE-TEST



True or False (Circle T or F)

1. T or F A field-type lead test kit can be used to help differentiate arrow wounds from bullet wounds on a deer carcass.
2. T or F A mature deer's pelvis bone can be used to determine a male deer from a female deer.

Multiple Choice (Choose the best answer and circle the corresponding letter)

3. The breast feathers of this common Pennsylvania bird can be used to distinguish the male from the female species.
A. Snow Goose B. Turkey C. Canada Goose D. Catbird
4. The two locations on a white-tailed deer that most forensic examiners would use in a field test to determine Time Of Death using a thermometer would be:
A. Thigh and eye B. Thigh and nasal
C. Chest and nasal D. Ear and thigh
5. Forensic entomology deals with what species of animal?
A. Birds B. Reptiles C. Insects D. Mammals
6. This Pennsylvania State agency deals primarily with the wild birds and mammals in the Commonwealth.
A. PA Dept. of Agriculture B. PA Fish and Boat Commission
C. PA Game Commission D. Dept. of Environmental Protection
7. What is the average body temperature in degrees F of a live white-tailed deer that is healthy?
A. 100 B. 85 C. 102 D. 107
8. Which statement is not true regarding the phenomena that occurs to a white-tailed deer's eyes after death?
A. The eye becomes dull in appearance
B. The pupil constricts and gets narrow
C. The cornea becomes cloudy in appearance
D. The lens takes on a bright red color



Day 2: Forensics Kit and Fingerprints

Day 2 Activities

Students will learn how to make their own Forensics Kit by watching [this video](#). Then, they will watch the [CSI Kit activity](#) video, a [fingerprint activity](#) video, and a [wrap up](#) video. Each of these outlines different fun activities the students can use their kits for.



Access activities by clicking the links in blue above.

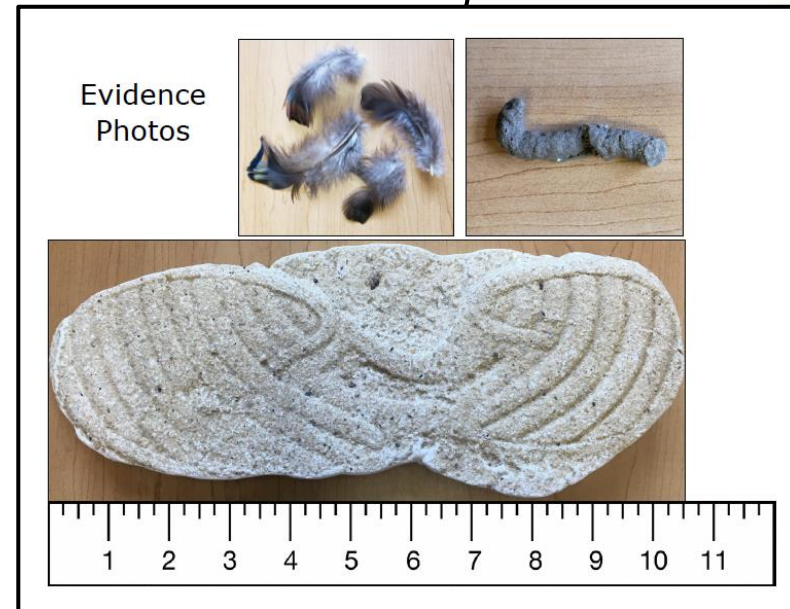


Day 3: The Case of the Phantom Feathers

Day 3 Activity

Students will learn about life as a Game Warden for a day by completing The Case of the Phantom Feathers wildlife forensic activity. This activity is designed for students to complete in the classroom or virtually.

- [Teacher Plan](#)
- [Student Worksheet](#)
- [Evidence photos](#)
- [Feather ID Chart](#)
- [Answer Key](#)



Access activities by clicking the links in blue above.



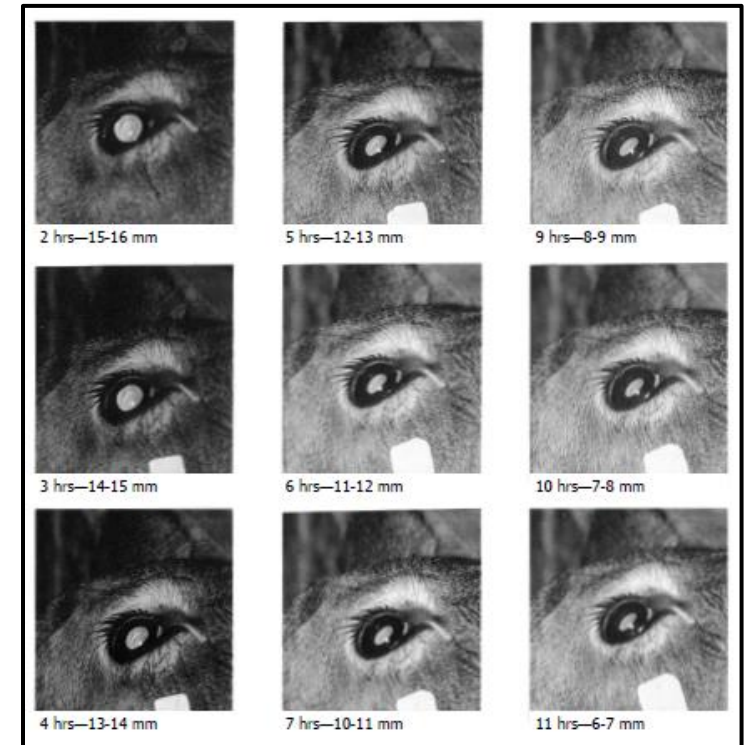
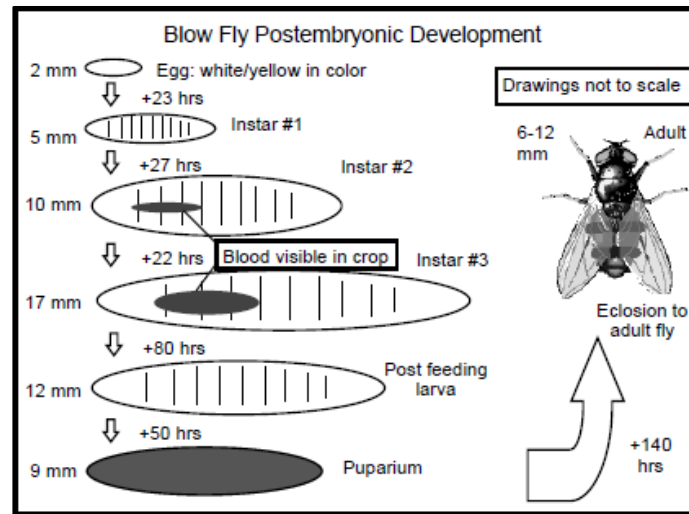
Day 4: The Case of the Barn Bucks



Day 4 Activity

Students will learn about life as a Game Warden for a day and complete The Case of the Barn Bucks wildlife forensic activity. This activity is designed to be “hands-on” and can be completed in the classroom or virtually.

- [Introduction video](#)
- [Teacher Plan](#)
- [Student Worksheet](#)
- [Answer Key](#)





Day 5: Forensics Reading

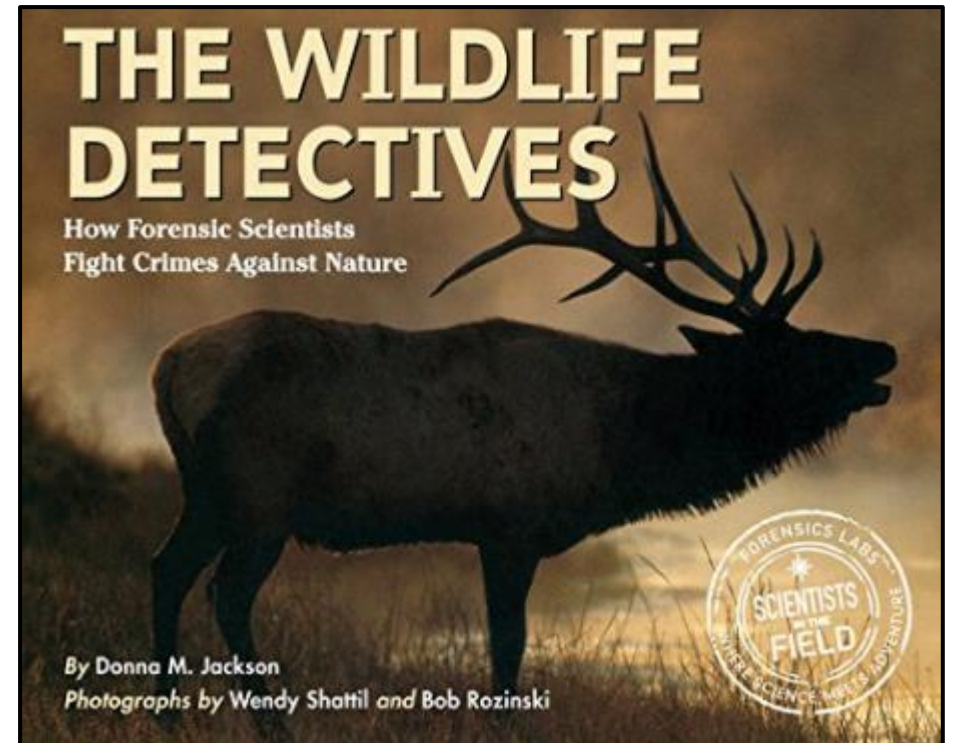
Day 5 Activities

Students will listen to a [Forensics reading video](#) about a famous elk from Yellowstone National Park, followed by a [closing segment](#). Students will then be able to assess what they have learned about wildlife forensics by taking the [Wildlife Forensics Post-test](#).

Alternate option: Schedule a virtual lesson with a PGC Wildlife Education Specialist to further discuss forensics in the wildlife field.



Access activities or resources by clicking the links in blue above.





Thank You!

Questions or Comments?

Let us know at wildlifeonwifi@pa.gov.