



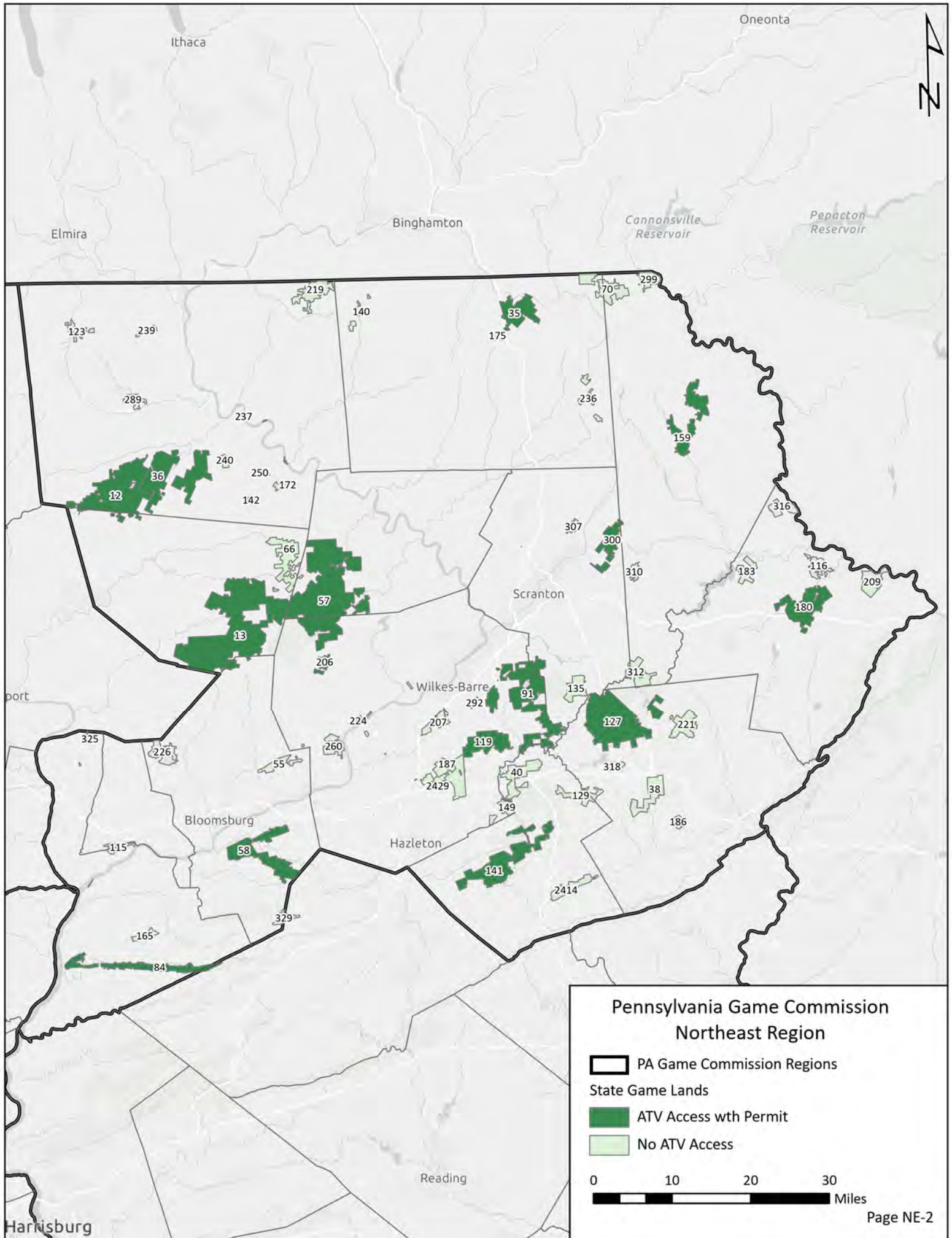
Northeast Region



It is unlawful to ride ATVs on state game lands, except on designated roads open for persons issued a Disabled Persons Permit, and who have a valid registration from the Department of Conservation & Natural Resources.

Table of Contents

Northeast Region Overview Map	NE-2
State Game Lands 12	Bradford and Sullivan counties	NE-3
State Game Lands 13	Sullivan and Columbia counties	NE-4
State Game Lands 35	Susquehanna County	NE-5
State Game Lands 36	Bradford County.....	NE-6
State Game Lands 57	Wyoming and Luzerne counties	NE-7
State Game Lands 58	Columbia County.....	NE-8
State Game Lands 84	Northumberland and Schuylkill counties	NE-9
State Game Lands 91	Luzerne and Lackawanna counties	NE-10
State Game Lands 119	Luzerne County	NE-11
State Game Lands 127	Monroe County.....	NE-12
State Game Lands 141	Carbon County	NE-13
State Game Lands 159	Wayne County.....	NE-14
State Game Lands 180	Pike County	NE-15
State Game Lands 206	Luzerne County	NE-16
State Game Lands 300	Lackawanna and Wayne counties.....	NE-17



**Pennsylvania Game Commission
Northeast Region**

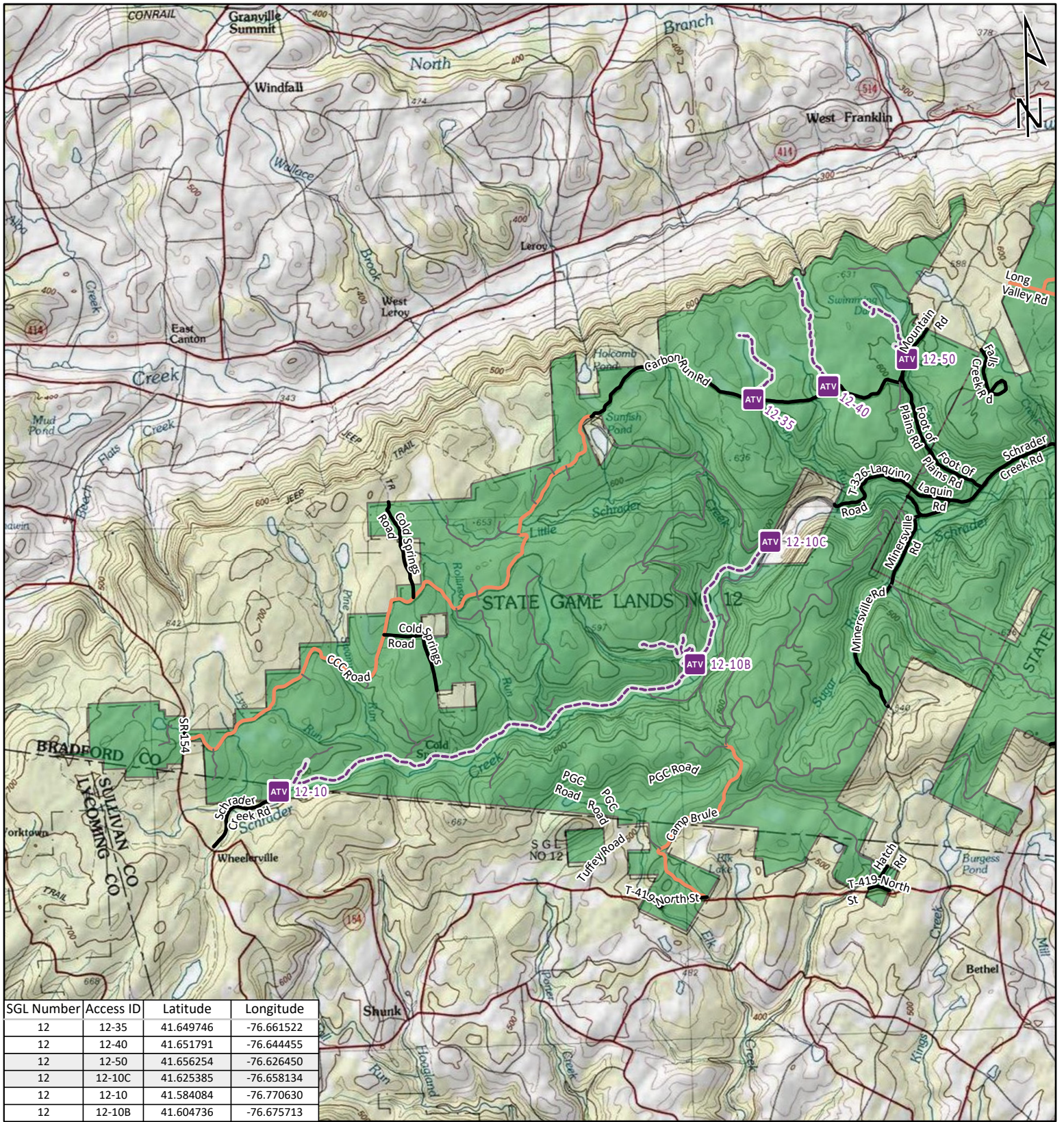
PA Game Commission Regions





State Game Lands

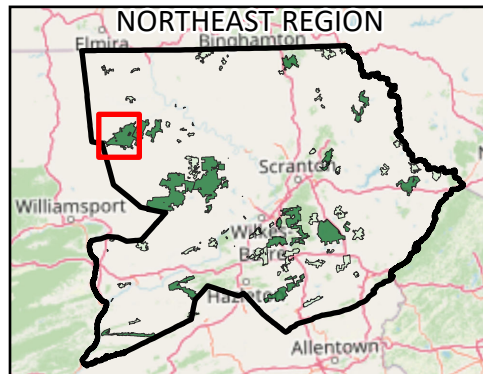
ATV Access with Permit

No ATV Access

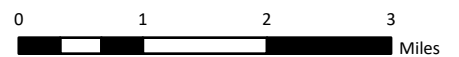
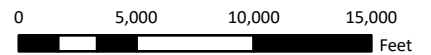
0 10 20 30 Miles



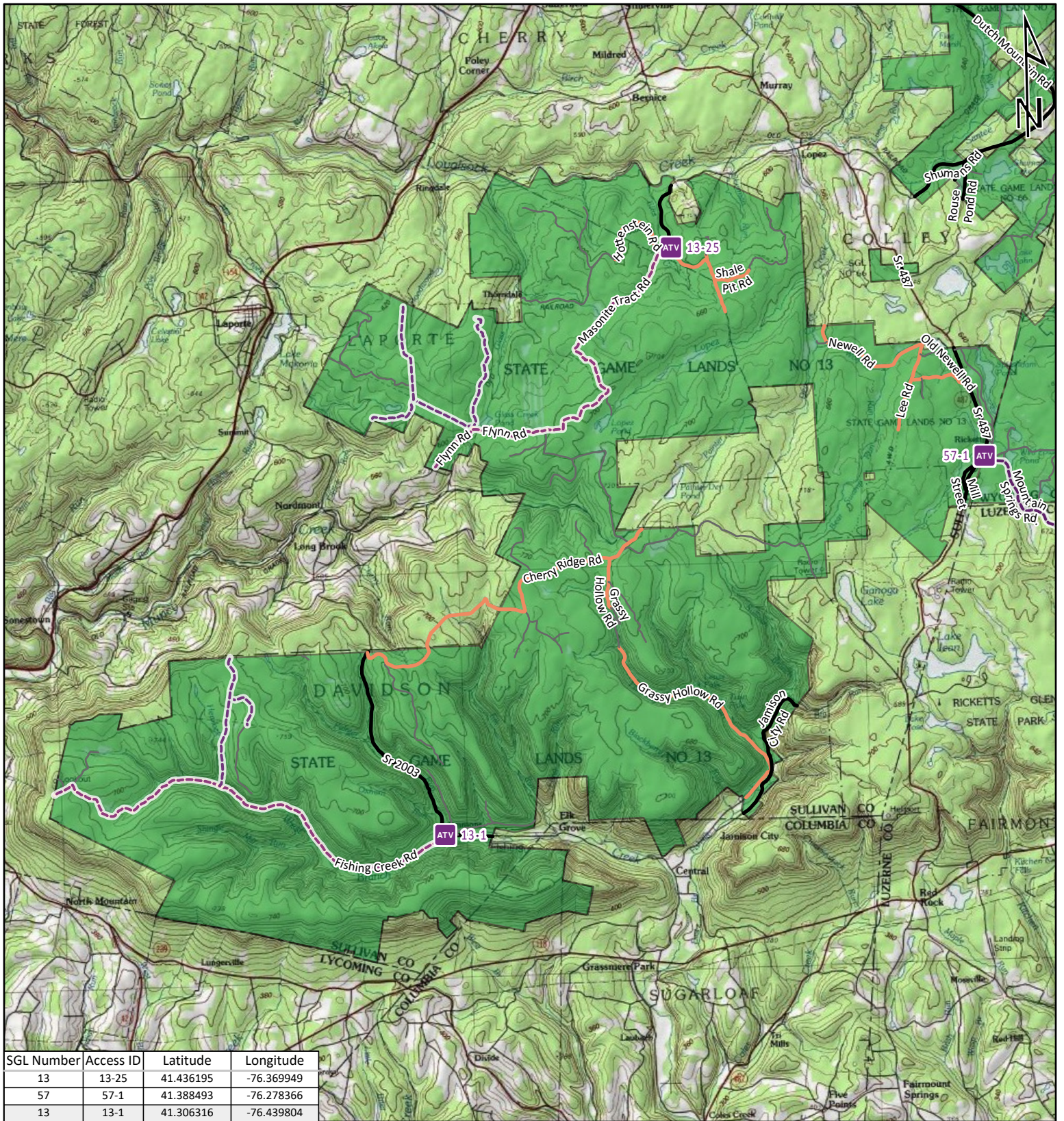
-  ATV ACCESS TRAIL START
-  STATE GAME LAND BOUNDARY
- GAME LANDS ROADS**
-  ROADS OPEN TO VEHICLE TRAFFIC
-  ROADS SEASONALLY OPEN TO VEHICLE TRAFFIC
-  ROADS CLOSED TO VEHICLE TRAFFIC
-  ATV ACCESS WITH PERMIT



STATE GAME LAND 12

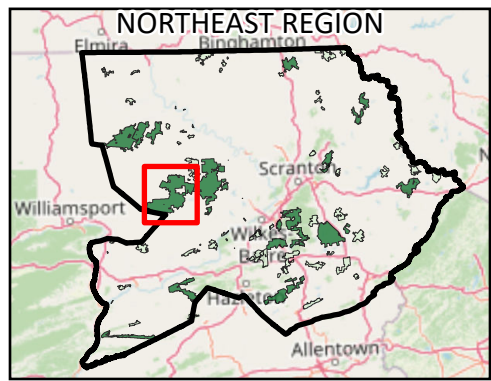


It is unlawful to ride ATV's on state game lands, except on designated roads open for persons issued a Disabled Person Permit, and who have a valid registration from the Department of Conservation & Natural Resources.

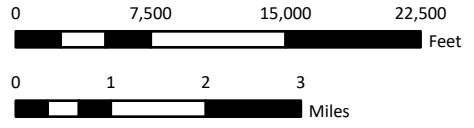


SGL Number	Access ID	Latitude	Longitude
13	13-25	41.436195	-76.369949
57	57-1	41.388493	-76.278366
13	13-1	41.306316	-76.439804

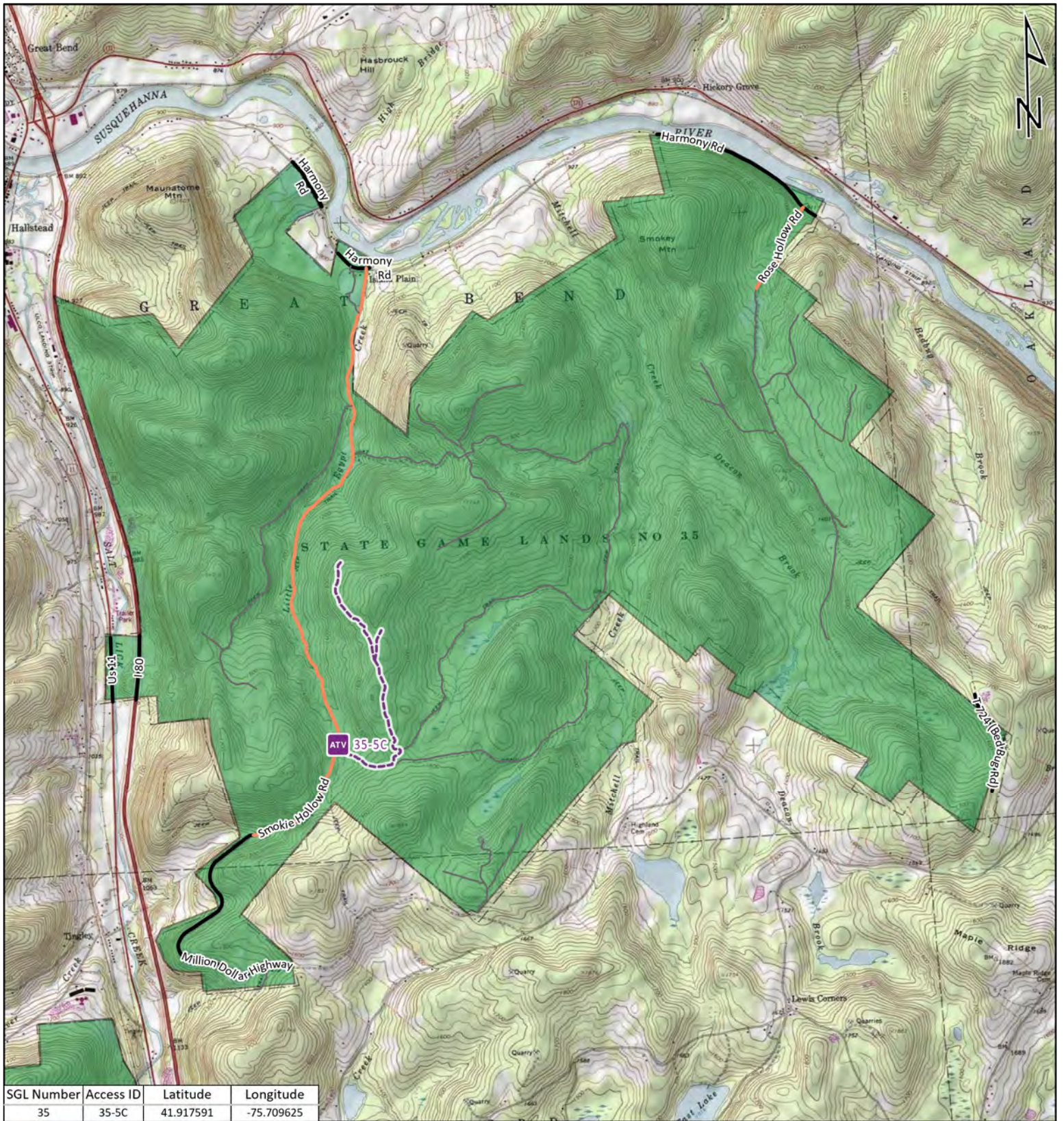
- ATV ACCESS TRAIL START
- STATE GAME LAND BOUNDARY
- GAME LANDS ROADS**
- ROADS OPEN TO VEHICLE TRAFFIC
- ROADS SEASONALLY OPEN TO VEHICLE TRAFFIC
- ROADS CLOSED TO VEHICLE TRAFFIC
- ATV ACCESS WITH PERMIT



STATE GAME LAND 13

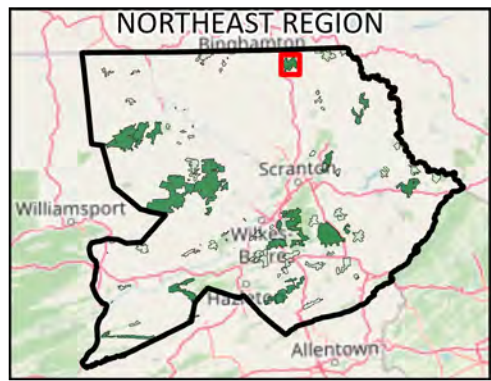


It is unlawful to ride ATV's on state game lands, except on designated roads open for persons issued a Disabled Person Permit, and who have a valid registration from the Department of Conservation & Natural Resources.

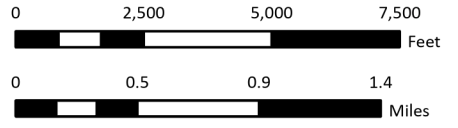


SGL Number	Access ID	Latitude	Longitude
35	35-5C	41.917591	-75.709625

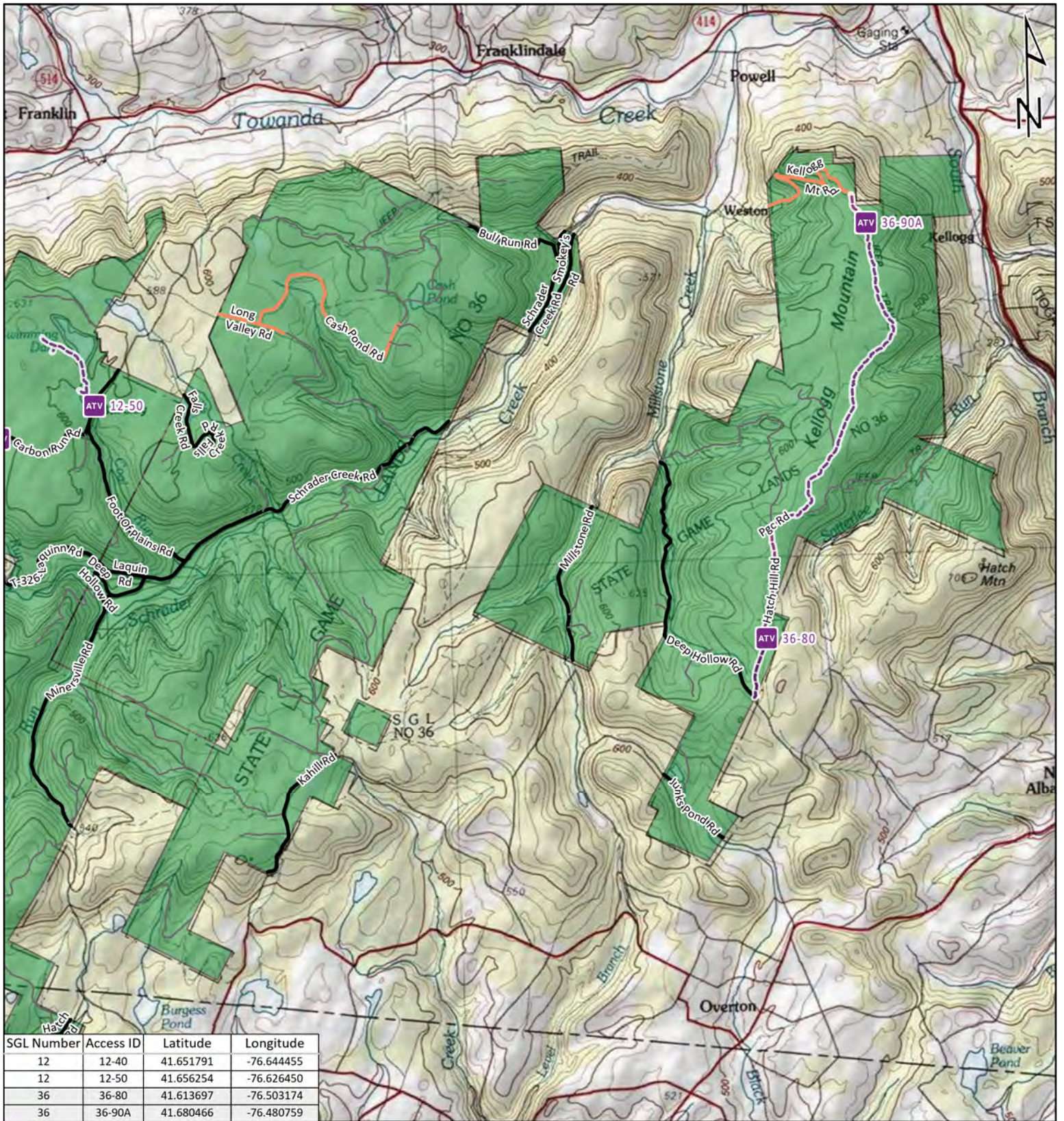
-  ATV ACCESS TRAIL START
-  STATE GAME LAND BOUNDARY
- GAME LANDS ROADS**
-  ROADS OPEN TO VEHICLE TRAFFIC
-  ROADS SEASONALLY OPEN TO VEHICLE TRAFFIC
-  ROADS CLOSED TO VEHICLE TRAFFIC
-  ATV ACCESS WITH PERMIT



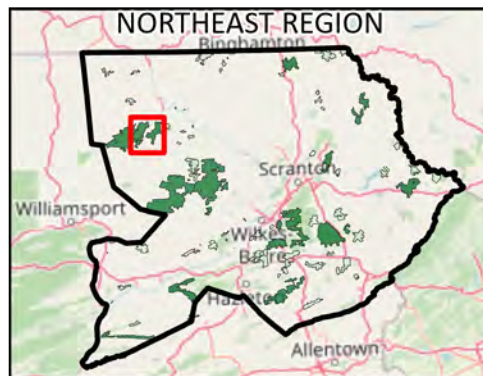
STATE GAME LAND 35



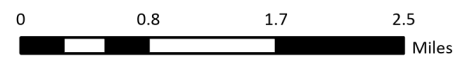
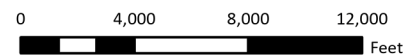
It is unlawful to ride ATV's on state game lands, except on designated roads open for persons issued a Disabled Person Permit, and who have a valid registration from the Department of Conservation & Natural Resources.



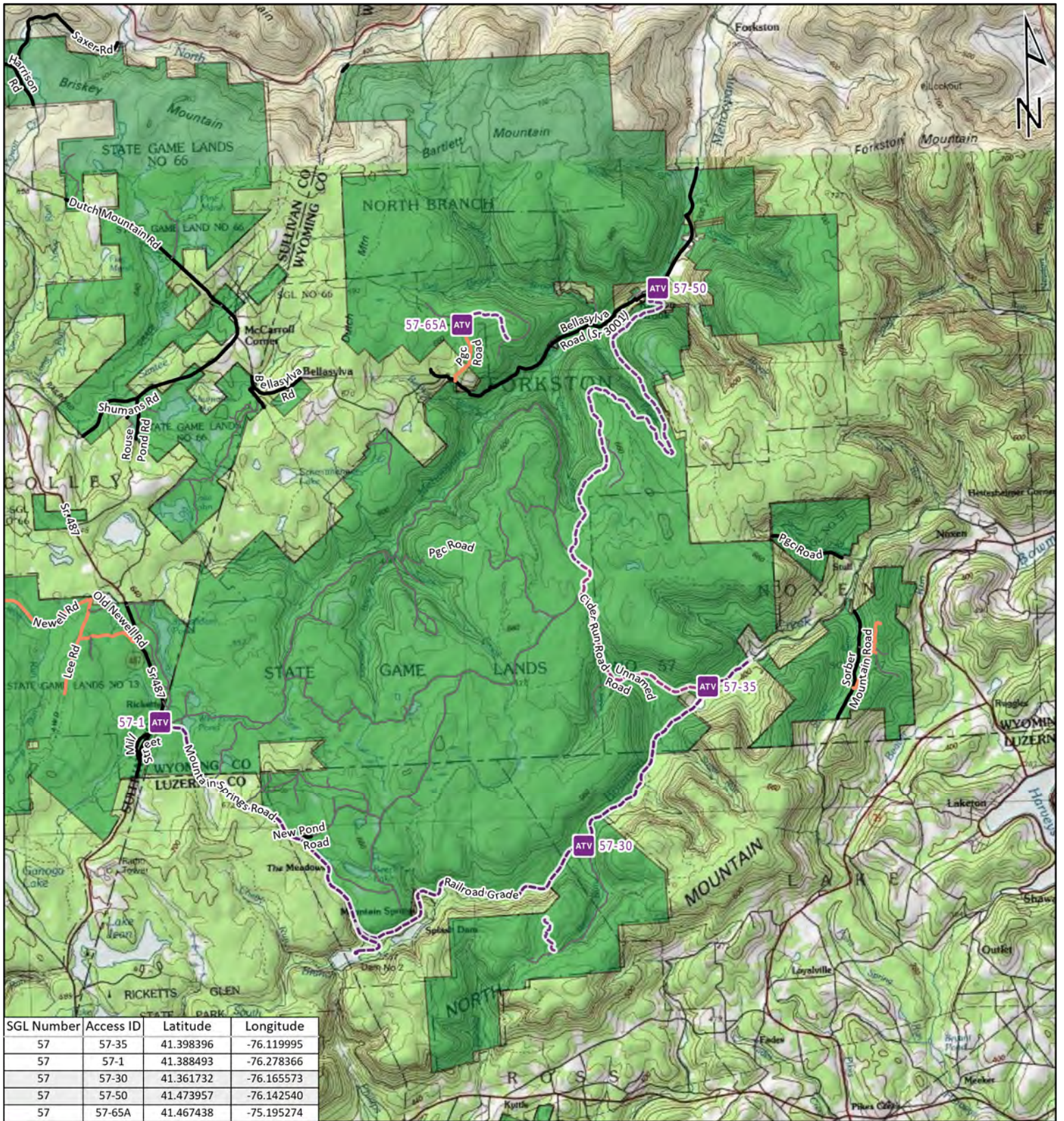
- ATV ACCESS TRAIL START
- STATE GAME LAND BOUNDARY
- GAME LANDS ROADS**
- ROADS OPEN TO VEHICLE TRAFFIC
- ROADS SEASONALLY OPEN TO VEHICLE TRAFFIC
- ROADS CLOSED TO VEHICLE TRAFFIC
- ATV ACCESS WITH PERMIT



STATE GAME LAND 36

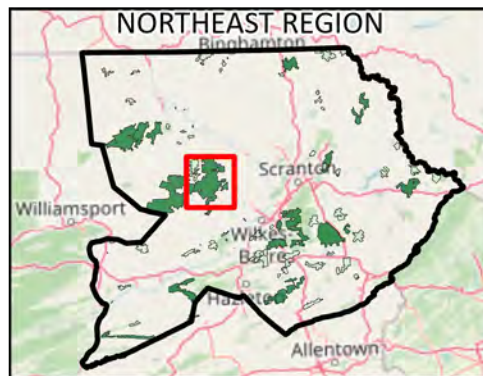


It is unlawful to ride ATV's on state game lands, except on designated roads open for persons issued a Disabled Person Permit, and who have a valid registration from the Department of Conservation & Natural Resources.

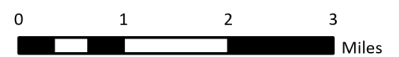
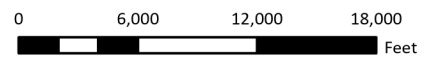


SGL Number	Access ID	Latitude	Longitude
57	57-35	41.398396	-76.119995
57	57-1	41.388493	-76.278366
57	57-30	41.361732	-76.165573
57	57-50	41.473957	-76.142540
57	57-65A	41.467438	-75.195274

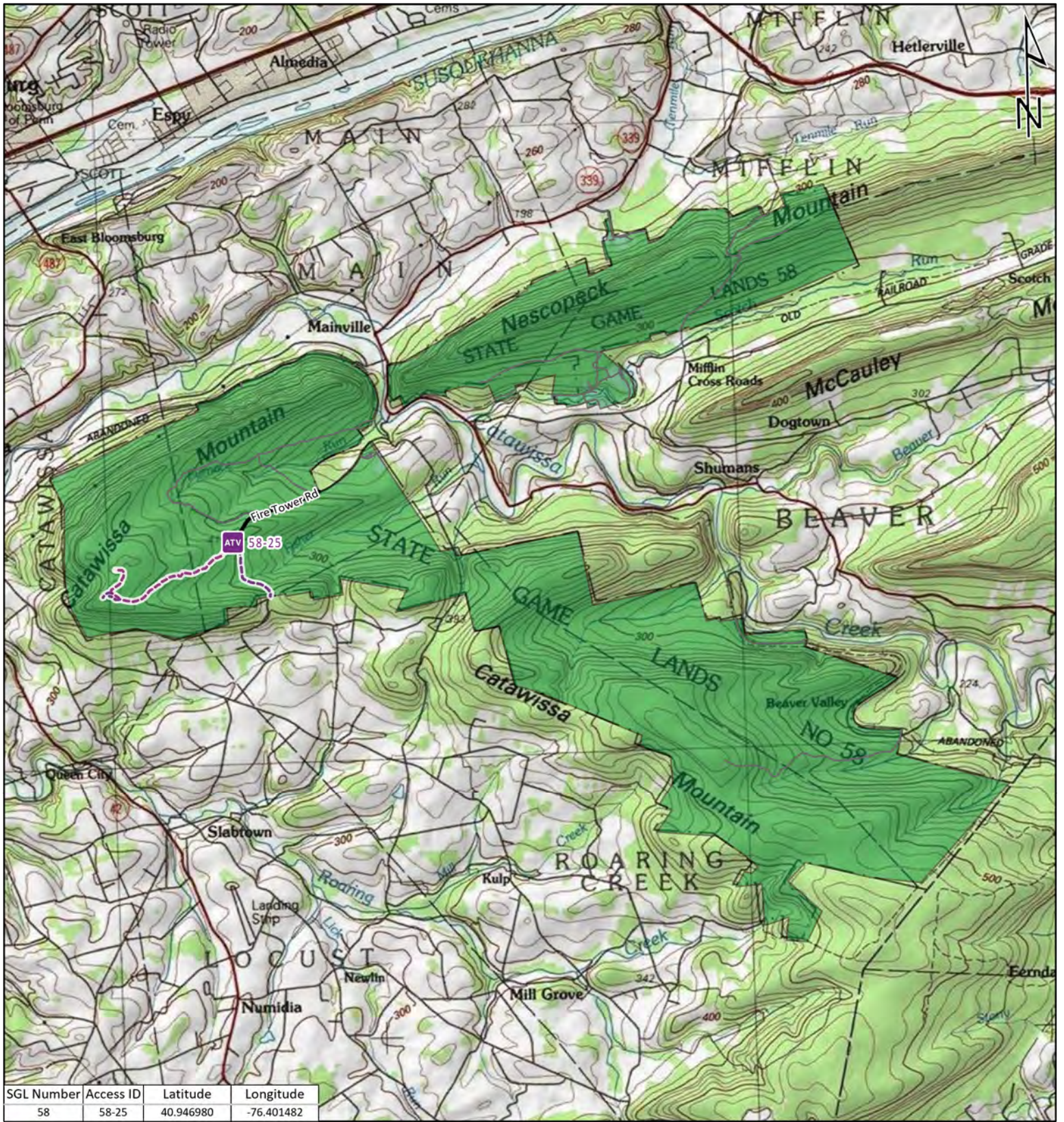
-  ATV ACCESS TRAIL START
-  STATE GAME LAND BOUNDARY
- GAME LANDS ROADS**
-  ROADS OPEN TO VEHICLE TRAFFIC
-  ROADS SEASONALLY OPEN TO VEHICLE TRAFFIC
-  ROADS CLOSED TO VEHICLE TRAFFIC
-  ATV ACCESS WITH PERMIT



STATE GAME LAND 57



It is unlawful to ride ATV's on state game lands, except on designated roads open for persons issued a Disabled Person Permit, and who have a valid registration from the Department of Conservation & Natural Resources.



ATV ACCESS TRAIL START



STATE GAME LAND BOUNDARY

GAME LANDS ROADS



ROADS OPEN TO VEHICLE TRAFFIC



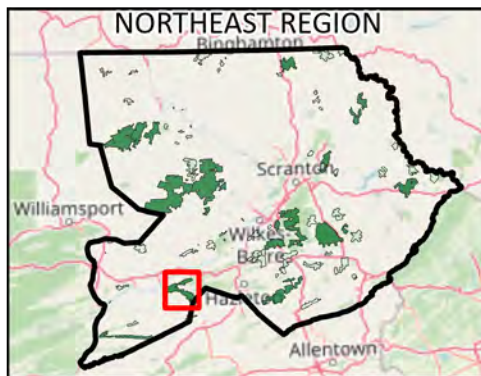
ROADS SEASONALLY OPEN TO VEHICLE TRAFFIC



ROADS CLOSED TO VEHICLE TRAFFIC



ATV ACCESS WITH PERMIT



STATE GAME LAND 58



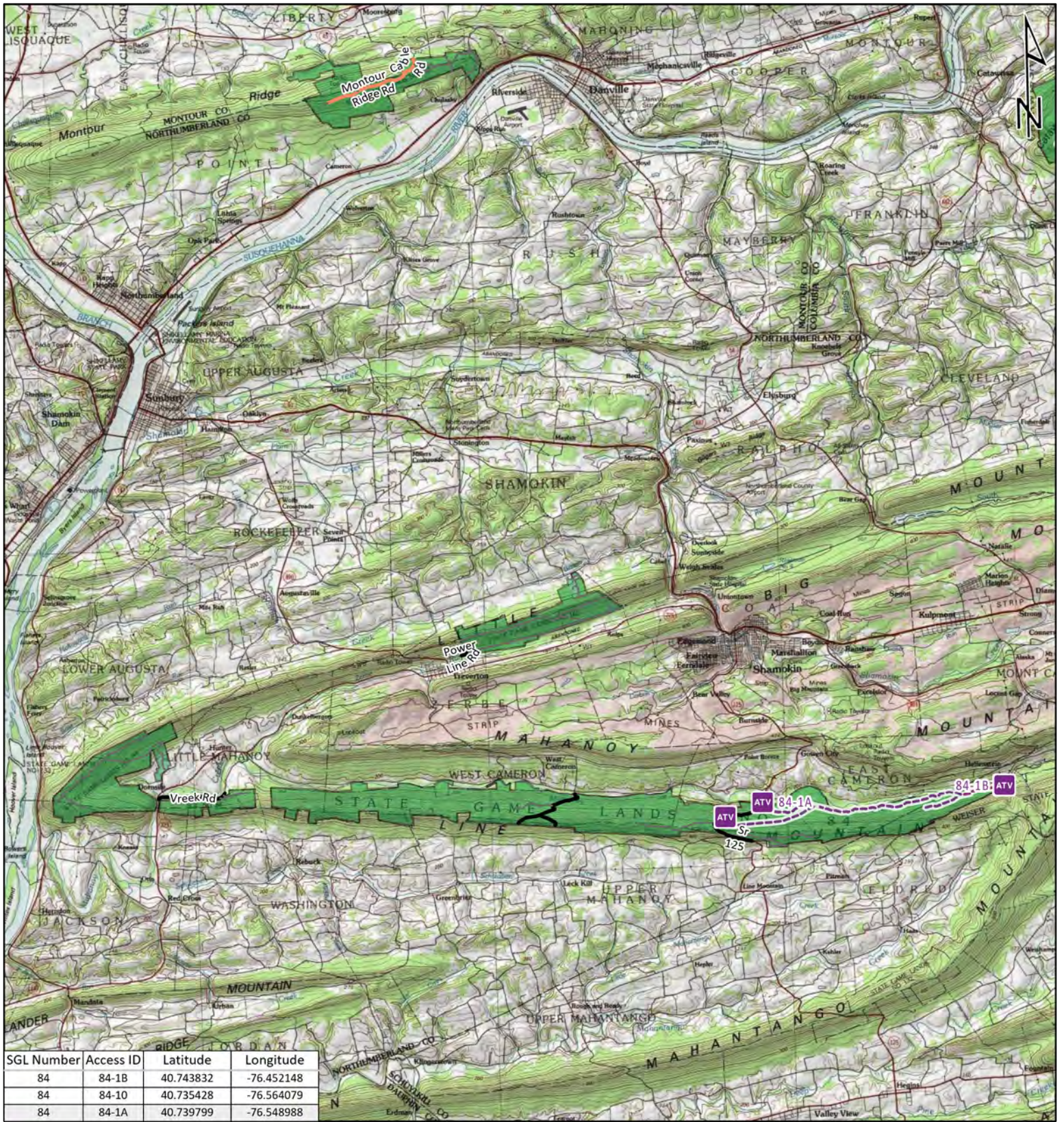
0 4,000 8,000 12,000

Feet

0 0.8 1.7 2.5

Miles

It is unlawful to ride ATV's on state game lands, except on designated roads open for persons issued a Disabled Person Permit, and who have a valid registration from the Department of Conservation & Natural Resources.



ATV ACCESS TRAIL START



STATE GAME LAND BOUNDARY

GAME LANDS ROADS



ROADS OPEN TO VEHICLE TRAFFIC



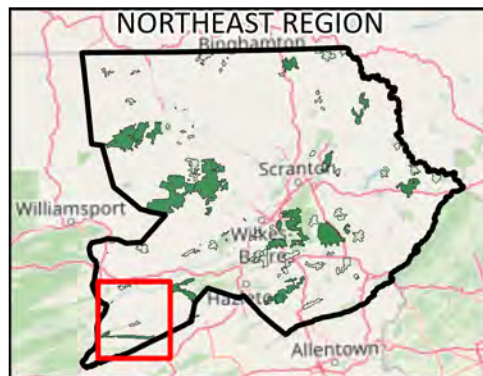
ROADS SEASONALLY OPEN TO VEHICLE TRAFFIC



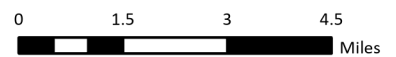
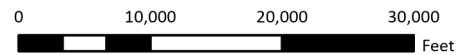
ROADS CLOSED TO VEHICLE TRAFFIC



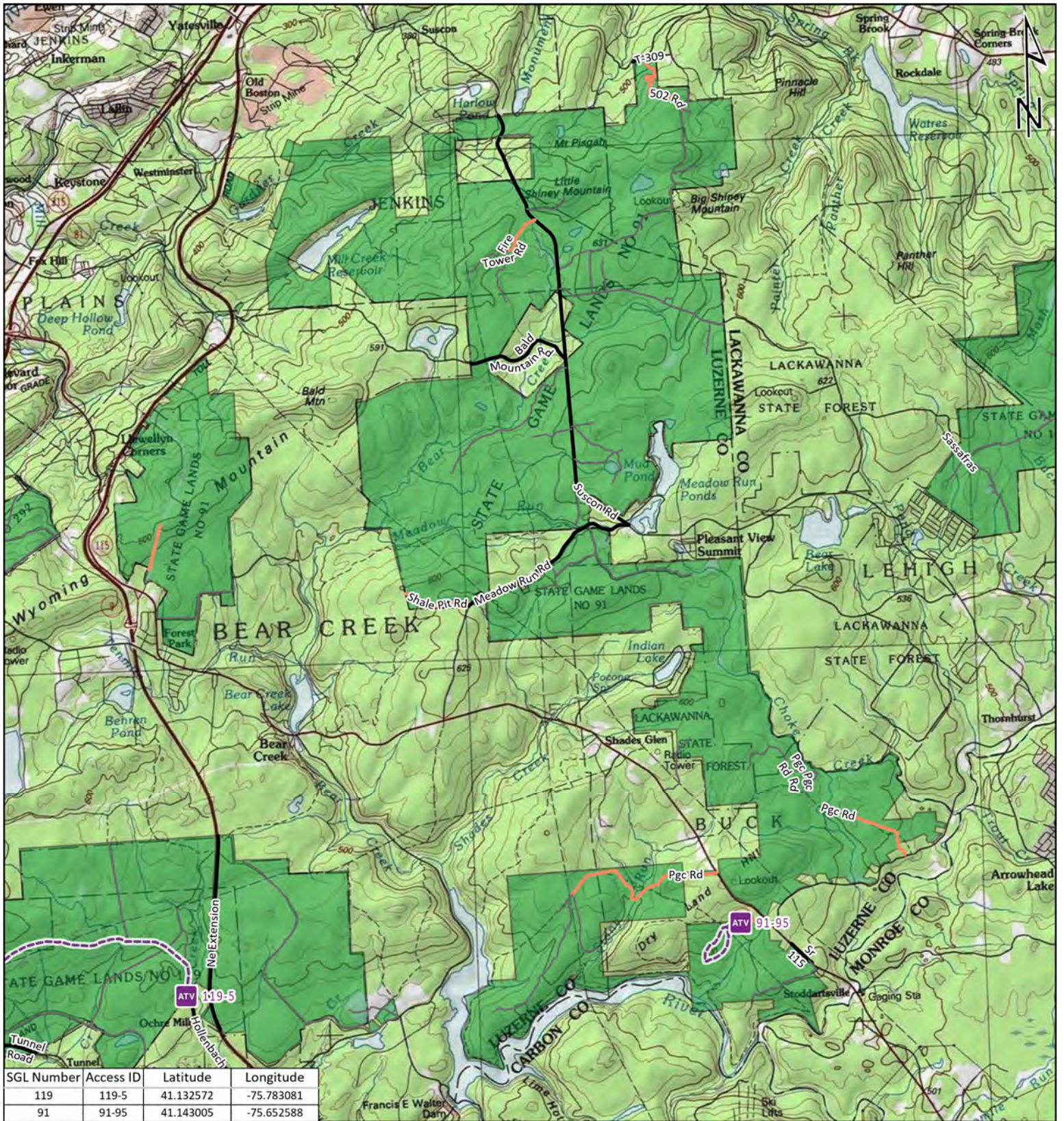
ATV ACCESS WITH PERMIT



STATE GAME LAND 84

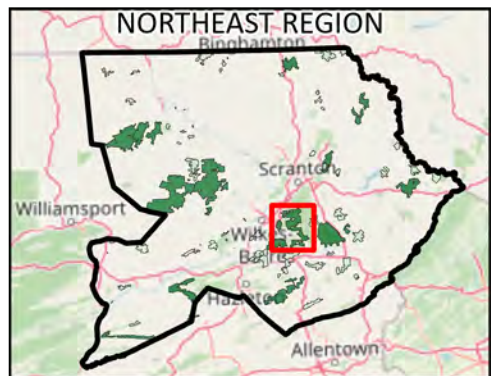


It is unlawful to ride ATV's on state game lands, except on designated roads open for persons issued a Disabled Person Permit, and who have a valid registration from the Department of Conservation & Natural Resources.



SGL Number	Access ID	Latitude	Longitude
119	119-5	41.132572	-75.783081
91	91-95	41.143005	-75.652588

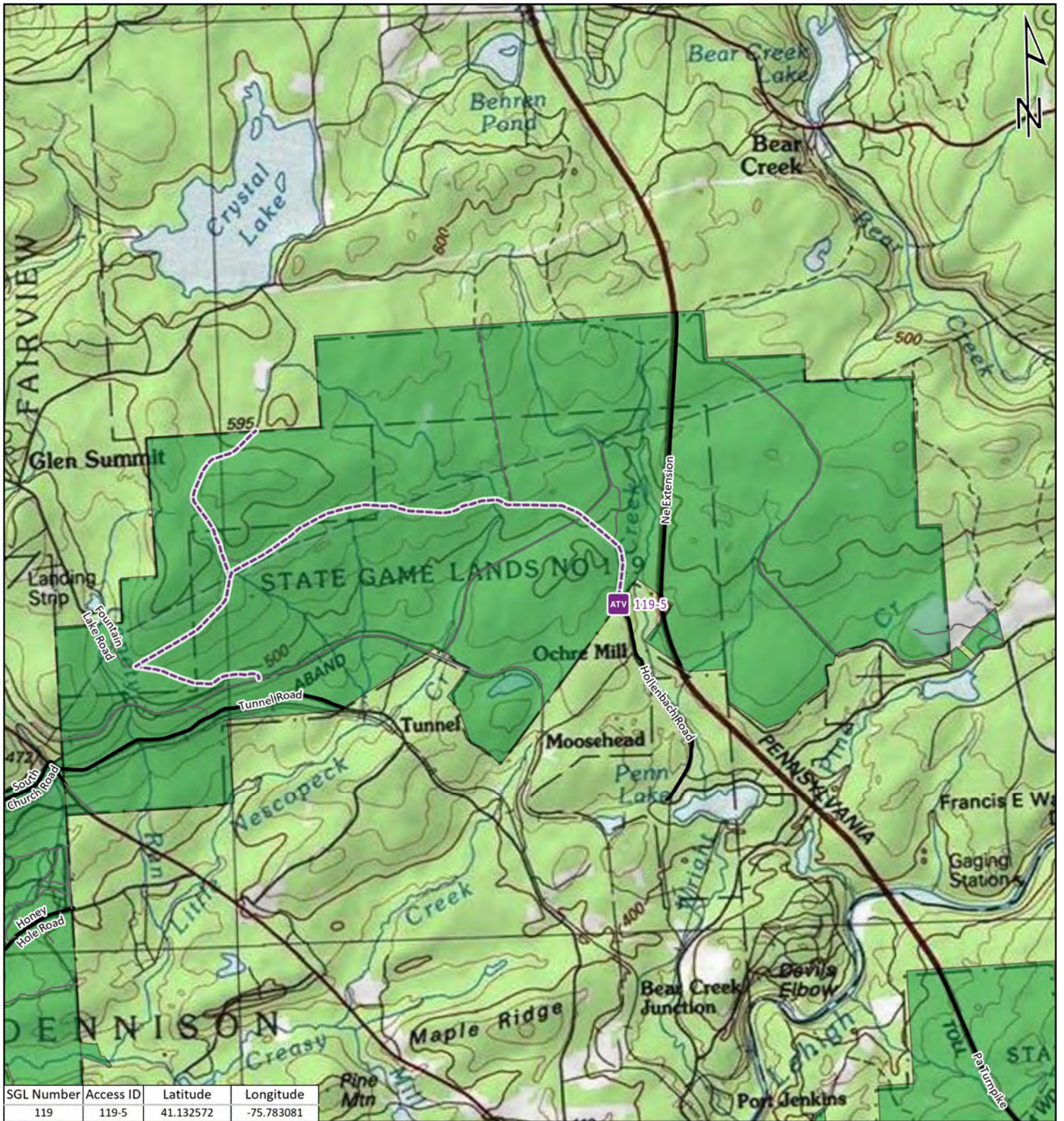
-  ATV ACCESS TRAIL START
-  STATE GAME LAND BOUNDARY
- GAME LANDS ROADS**
-  ROADS OPEN TO VEHICLE TRAFFIC
-  ROADS SEASONALLY OPEN TO VEHICLE TRAFFIC
-  ROADS CLOSED TO VEHICLE TRAFFIC
-  ATV ACCESS WITH PERMIT



STATE GAME LAND 91

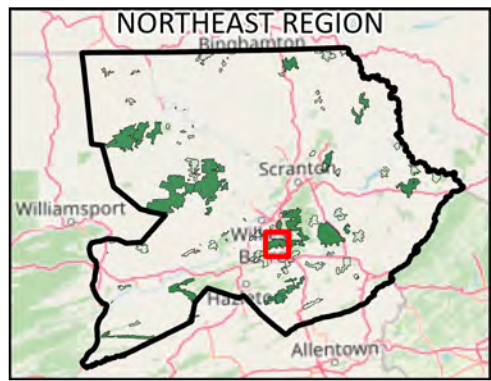


It is unlawful to ride ATV's on state game lands, except on designated roads open for persons issued a Disabled Person Permit, and who have a valid registration from the Department of Conservation & Natural Resources.



SGL Number	Access ID	Latitude	Longitude
119	119-5	41.132572	-75.783081

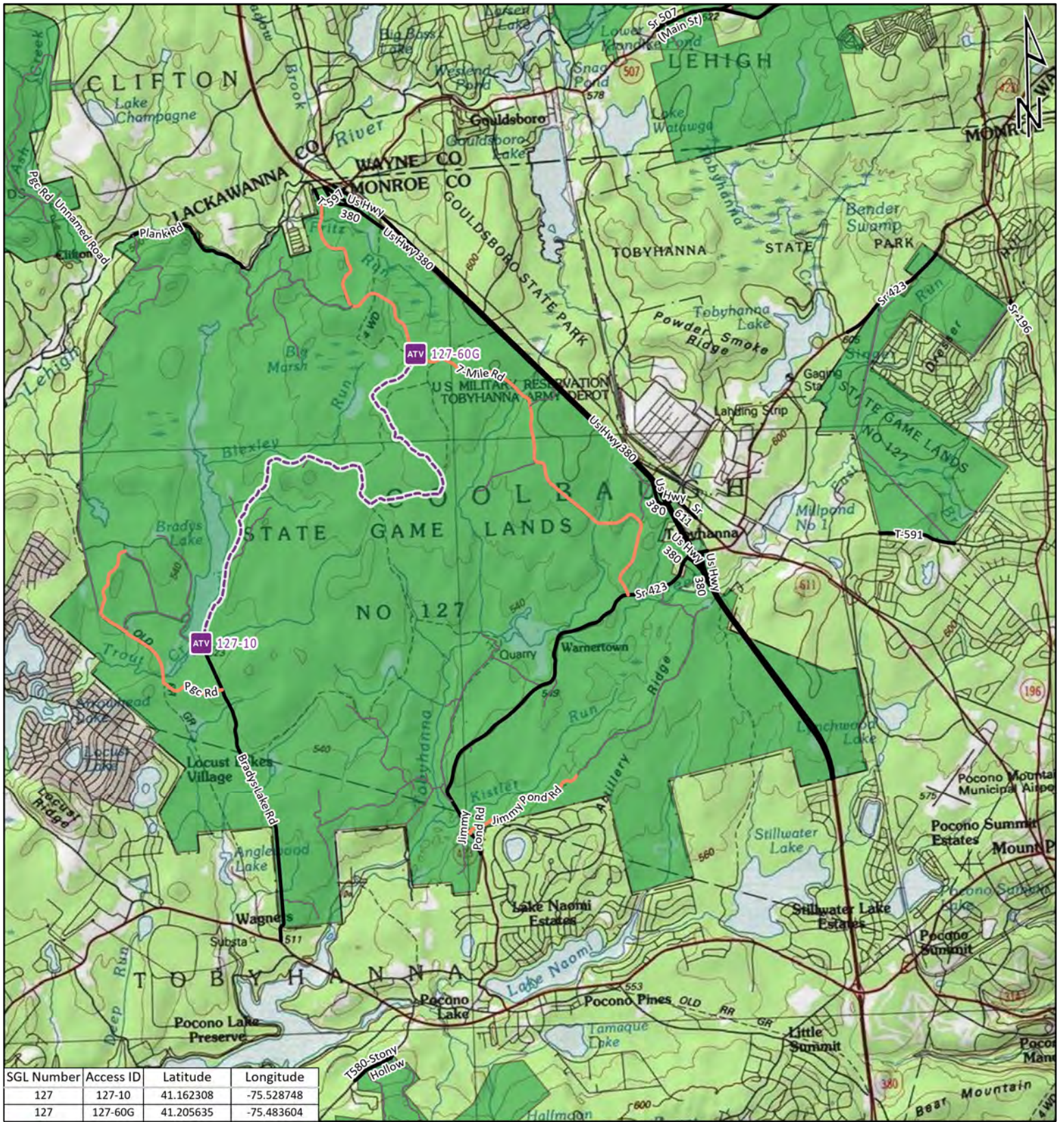
-  ATV ACCESS TRAIL START
-  STATE GAME LAND BOUNDARY
- GAME LANDS ROADS**
-  ROADS OPEN TO VEHICLE TRAFFIC
-  ROADS SEASONALLY OPEN TO VEHICLE TRAFFIC
-  ROADS CLOSED TO VEHICLE TRAFFIC
-  ATV ACCESS WITH PERMIT



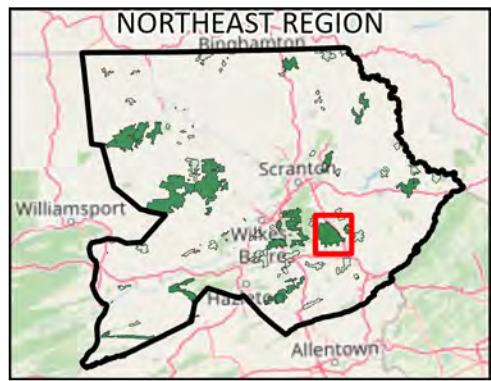
STATE GAME LAND 119



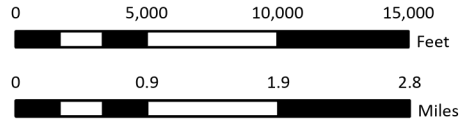
It is unlawful to ride ATV's on state game lands, except on designated roads open for persons issued a Disabled Person Permit, and who have a valid registration from the Department of Conservation & Natural Resources.



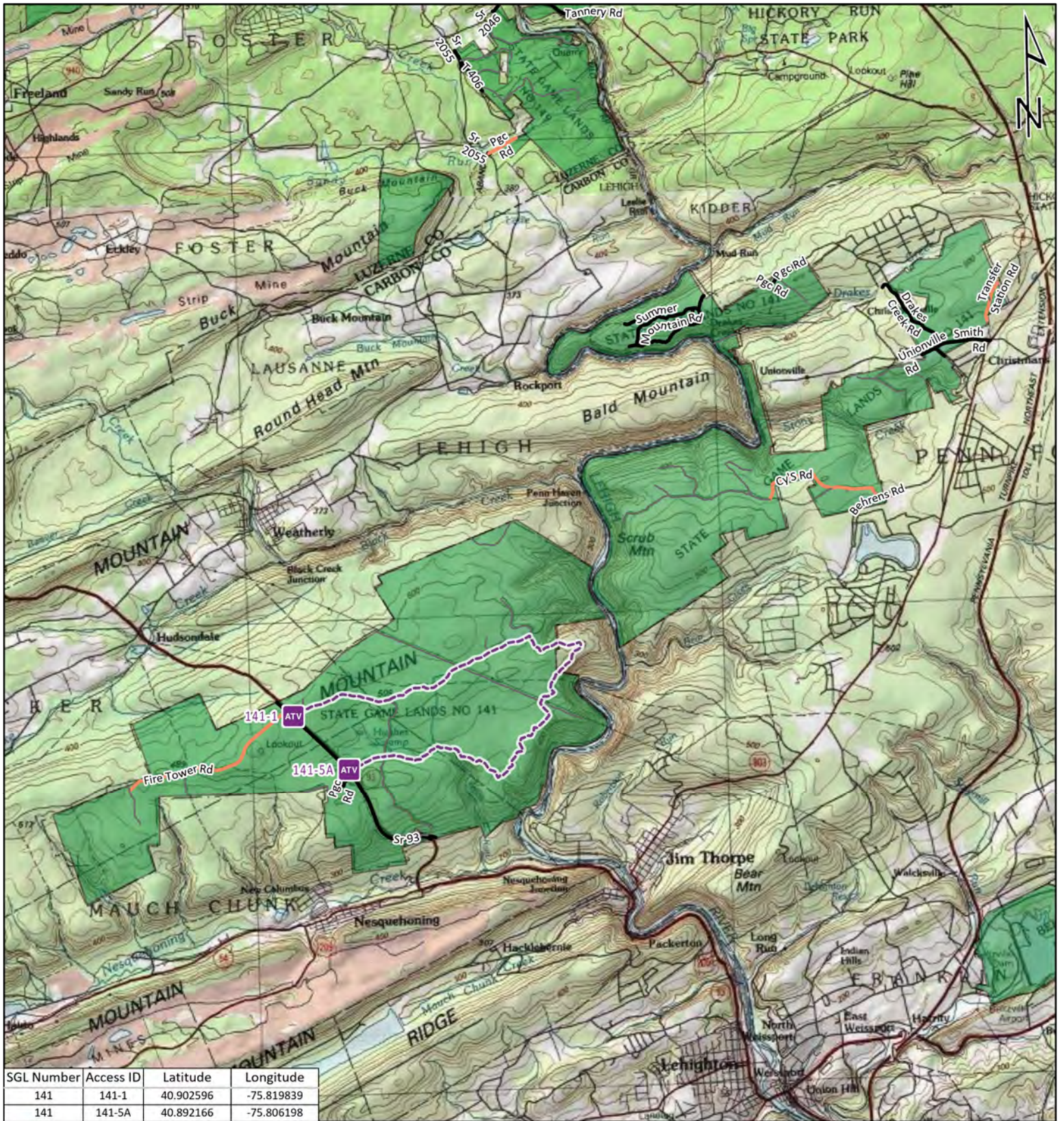
-  ATV ACCESS TRAIL START
-  STATE GAME LAND BOUNDARY
- GAME LANDS ROADS**
-  ROADS OPEN TO VEHICLE TRAFFIC
-  ROADS SEASONALLY OPEN TO VEHICLE TRAFFIC
-  ROADS CLOSED TO VEHICLE TRAFFIC
-  ATV ACCESS WITH PERMIT



STATE GAME LAND 127

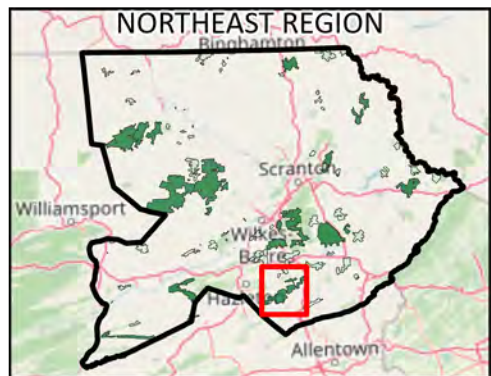


It is unlawful to ride ATV's on state game lands, except on designated roads open for persons issued a Disabled Person Permit, and who have a valid registration from the Department of Conservation & Natural Resources.

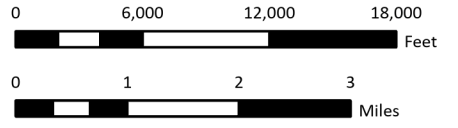


SGL Number	Access ID	Latitude	Longitude
141	141-1	40.902596	-75.819839
141	141-5A	40.892166	-75.806198

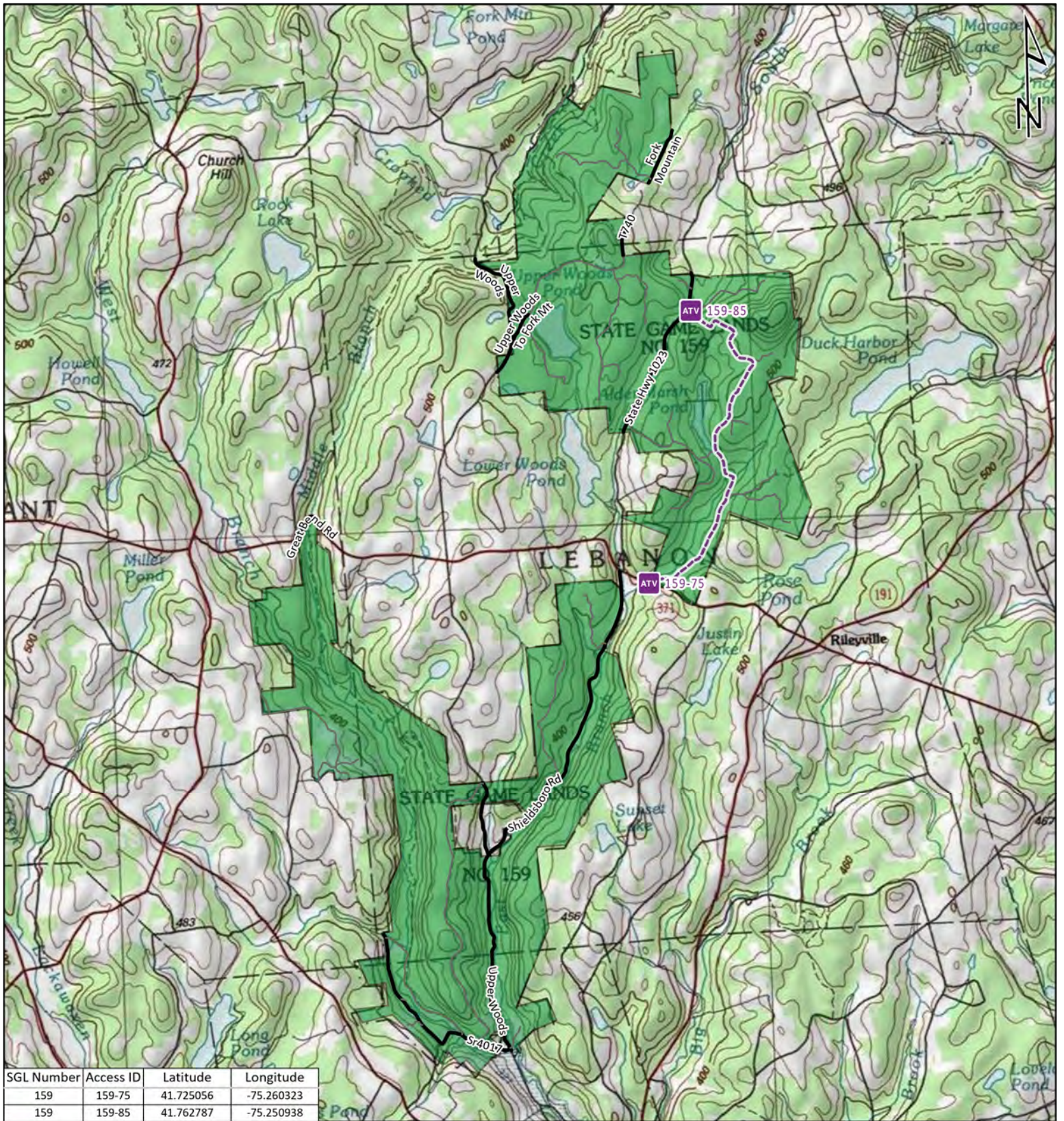
-  ATV ACCESS TRAIL START
-  STATE GAME LAND BOUNDARY
- GAME LANDS ROADS**
-  ROADS OPEN TO VEHICLE TRAFFIC
-  ROADS SEASONALLY OPEN TO VEHICLE TRAFFIC
-  ROADS CLOSED TO VEHICLE TRAFFIC
-  ATV ACCESS WITH PERMIT



STATE GAME LAND 141

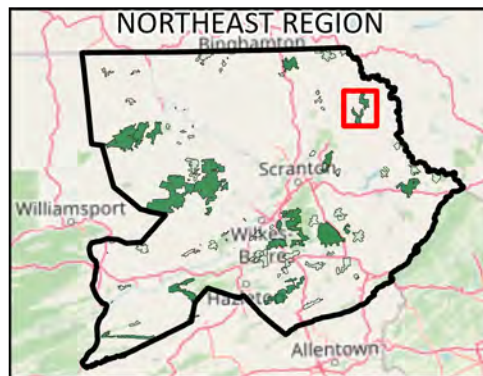


It is unlawful to ride ATV's on state game lands, except on designated roads open for persons issued a Disabled Person Permit, and who have a valid registration from the Department of Conservation & Natural Resources.

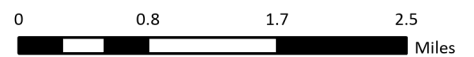
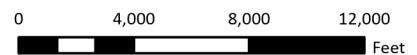


SGL Number	Access ID	Latitude	Longitude
159	159-75	41.725056	-75.260323
159	159-85	41.762787	-75.250938

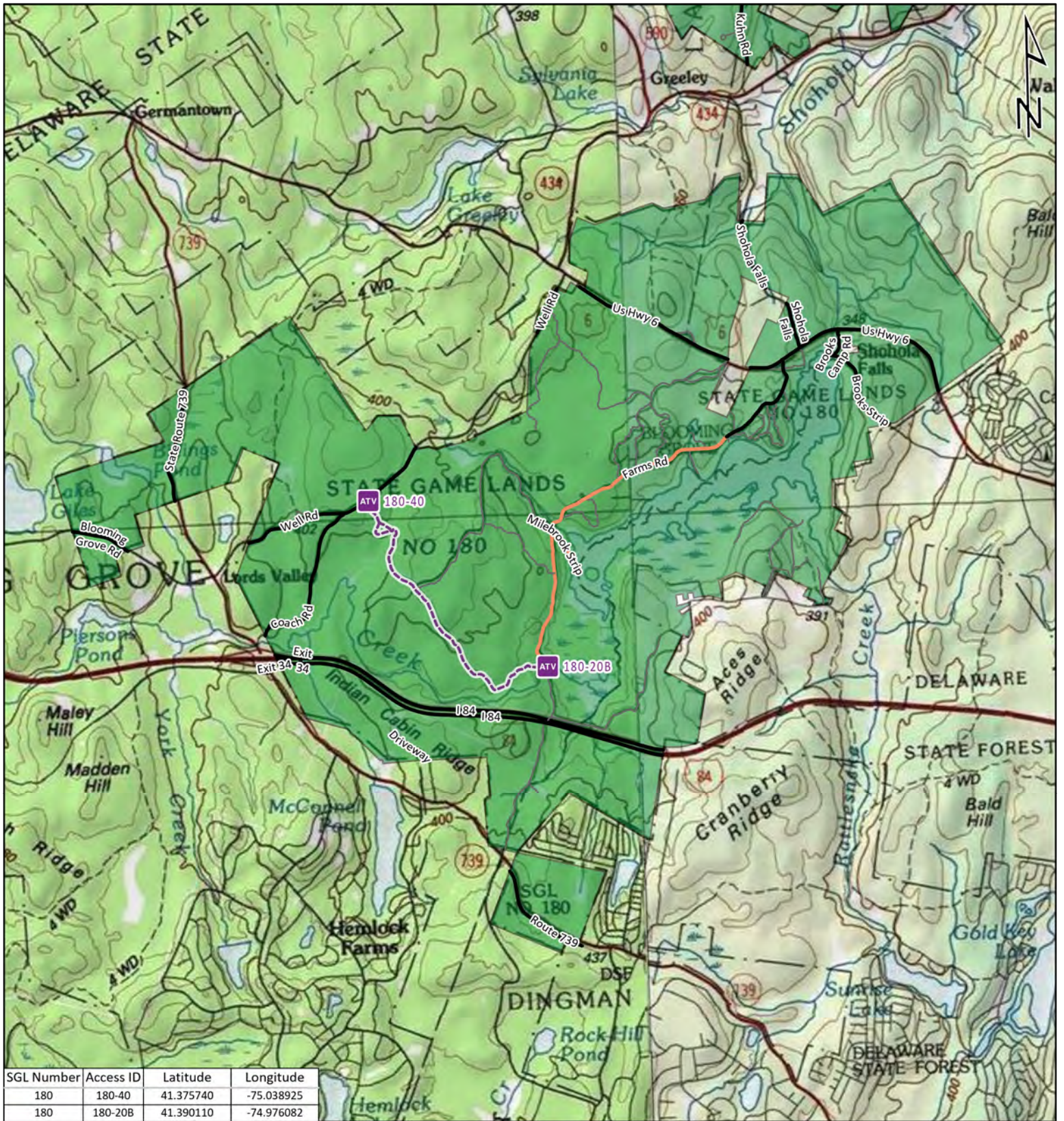
-  ATV ACCESS TRAIL START
-  STATE GAME LAND BOUNDARY
- GAME LANDS ROADS**
-  ROADS OPEN TO VEHICLE TRAFFIC
-  ROADS SEASONALLY OPEN TO VEHICLE TRAFFIC
-  ROADS CLOSED TO VEHICLE TRAFFIC
-  ATV ACCESS WITH PERMIT



STATE GAME LAND 159



It is unlawful to ride ATV's on state game lands, except on designated roads open for persons issued a Disabled Person Permit, and who have a valid registration from the Department of Conservation & Natural Resources.



SGL Number	Access ID	Latitude	Longitude
180	180-40	41.375740	-75.038925
180	180-20B	41.390110	-74.976082

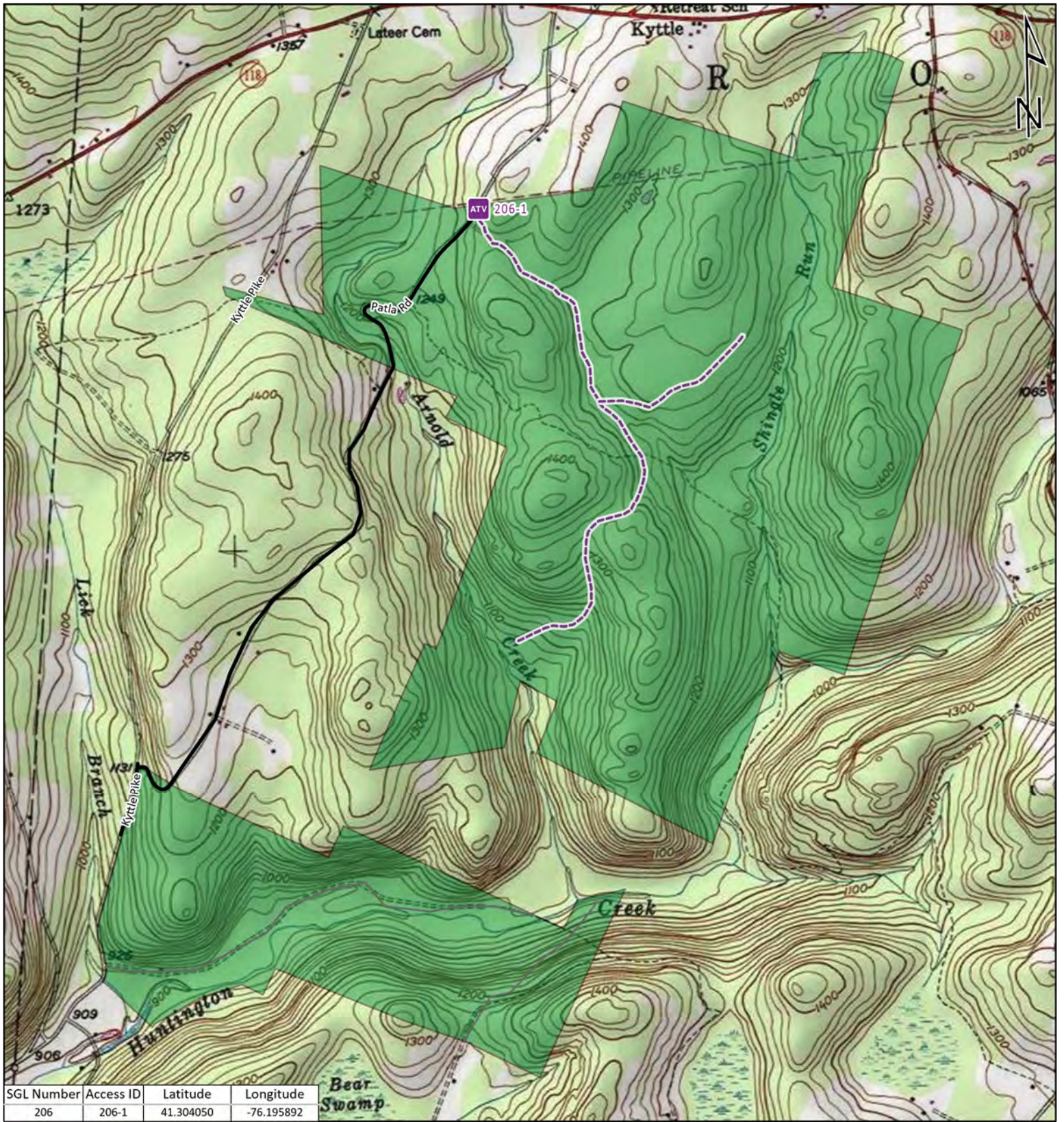
- ATV ACCESS TRAIL START
- STATE GAME LAND BOUNDARY
- GAME LANDS ROADS**
- ROADS OPEN TO VEHICLE TRAFFIC
- ROADS SEASONALLY OPEN TO VEHICLE TRAFFIC
- ROADS CLOSED TO VEHICLE TRAFFIC
- ATV ACCESS WITH PERMIT








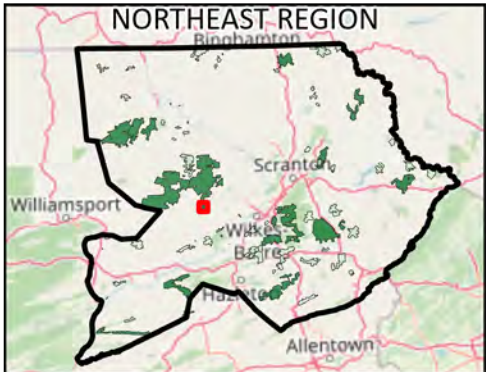
STATE GAME LAND 180



It is unlawful to ride ATV's on state game lands, except on designated roads open for persons issued a Disabled Person Permit, and who have a valid registration from the Department of Conservation & Natural Resources.



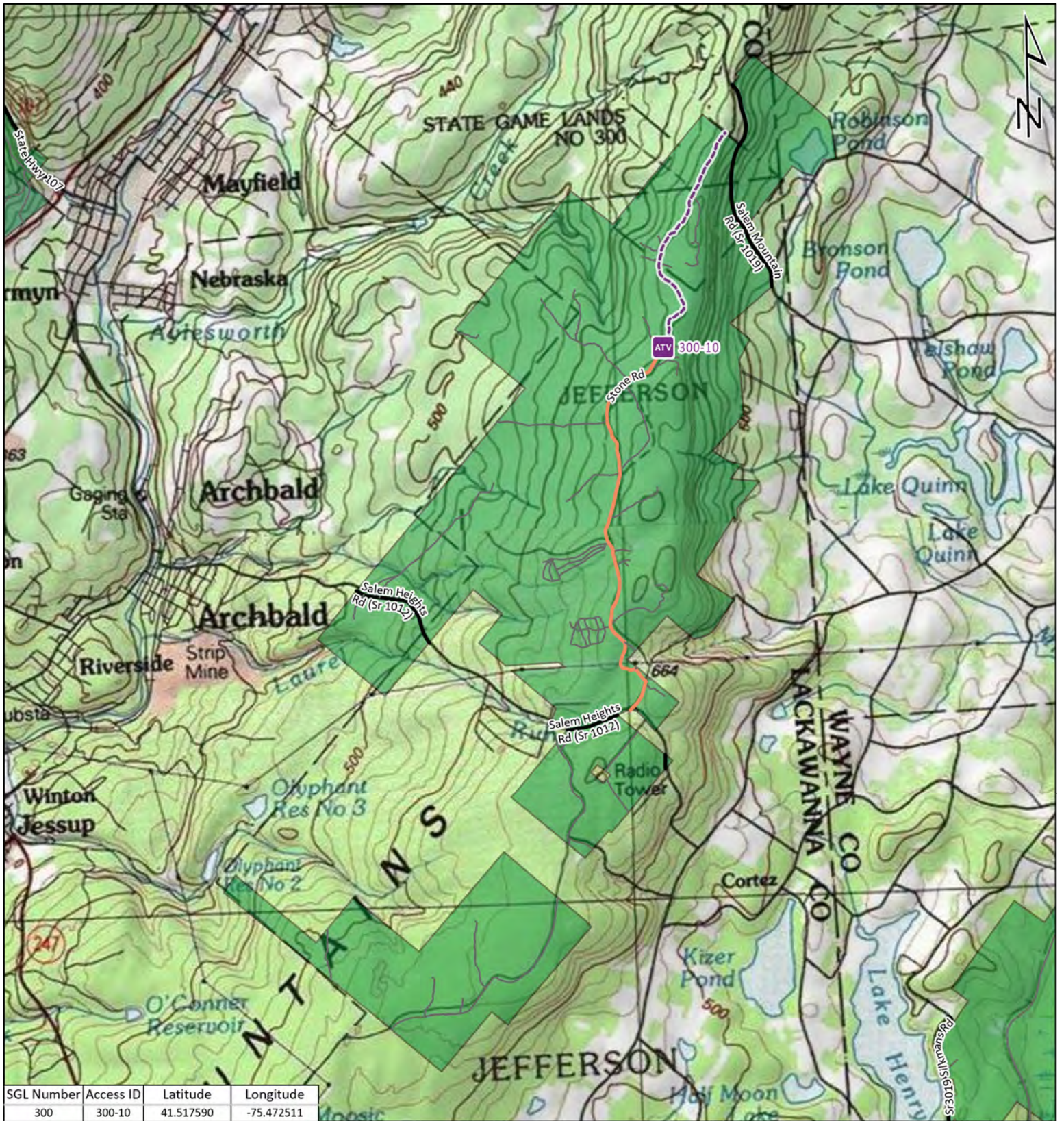
-  ATV ACCESS TRAIL START
-  STATE GAME LAND BOUNDARY
- GAME LANDS ROADS**
-  ROADS OPEN TO VEHICLE TRAFFIC
-  ROADS SEASONALLY OPEN TO VEHICLE TRAFFIC
-  ROADS CLOSED TO VEHICLE TRAFFIC
-  ATV ACCESS WITH PERMIT



STATE GAME LAND 206

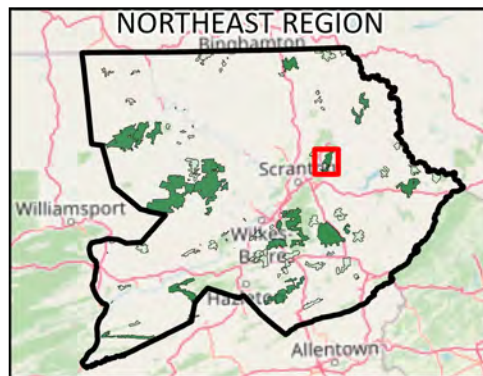


It is unlawful to ride ATV's on state game lands, except on designated roads open for persons issued a Disabled Person Permit, and who have a valid registration from the Department of Conservation & Natural Resources.

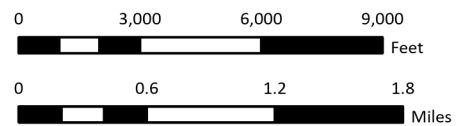


SGL Number	Access ID	Latitude	Longitude
300	300-10	41.517590	-75.472511

-  ATV ACCESS TRAIL START
-  STATE GAME LAND BOUNDARY
- GAME LANDS ROADS**
-  ROADS OPEN TO VEHICLE TRAFFIC
-  ROADS SEASONALLY OPEN TO VEHICLE TRAFFIC
-  ROADS CLOSED TO VEHICLE TRAFFIC
-  ATV ACCESS WITH PERMIT



STATE GAME LAND 300



It is unlawful to ride ATV's on state game lands, except on designated roads open for persons issued a Disabled Person Permit, and who have a valid registration from the Department of Conservation & Natural Resources.