

COMMONWEALTH OF PENNSYLVANIA
PENNSYLVANIA GAME COMMISSION



P.O. Box 31
Franklin, PA 16323

Northwest Region
(814) 432-3187

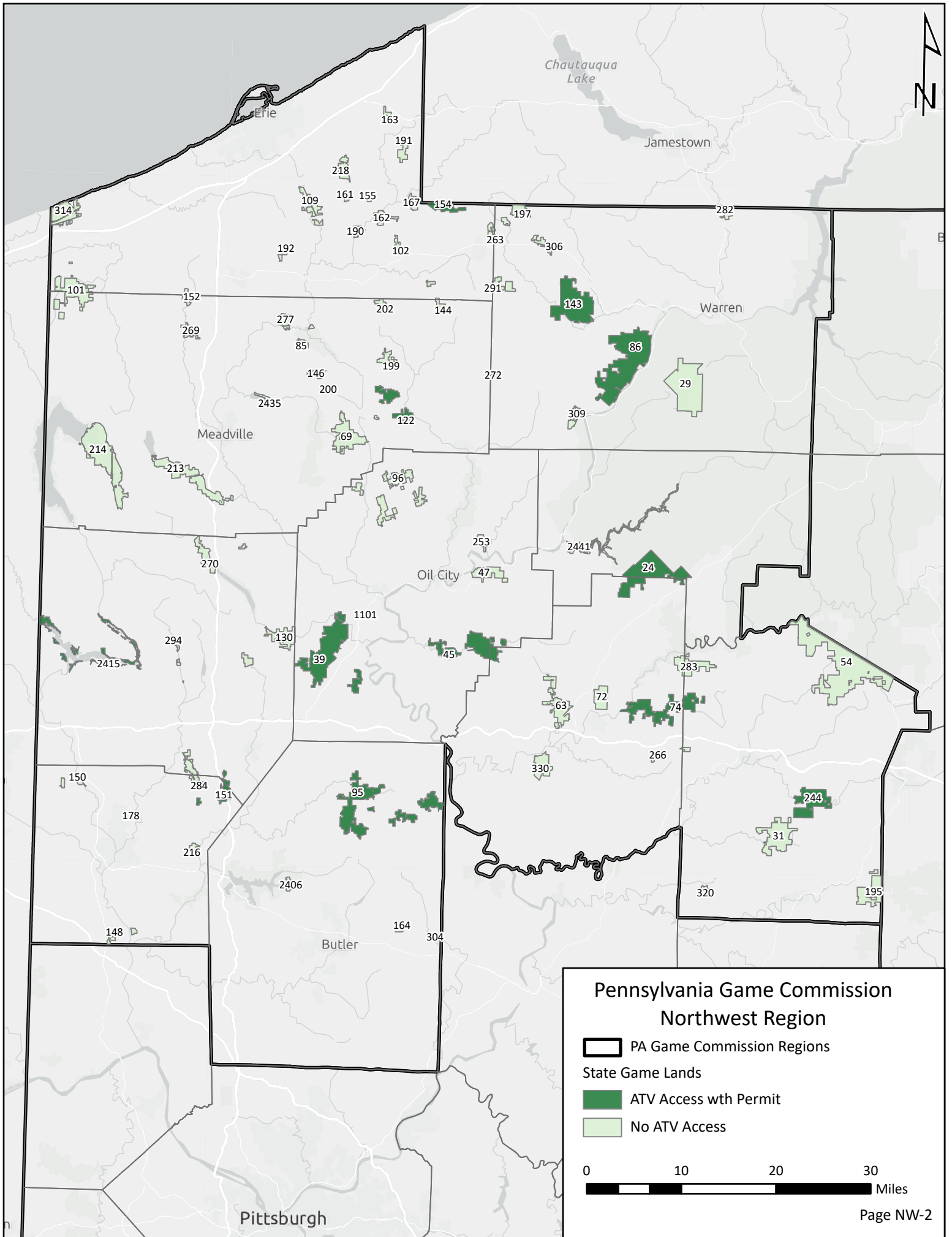
Northwest Region

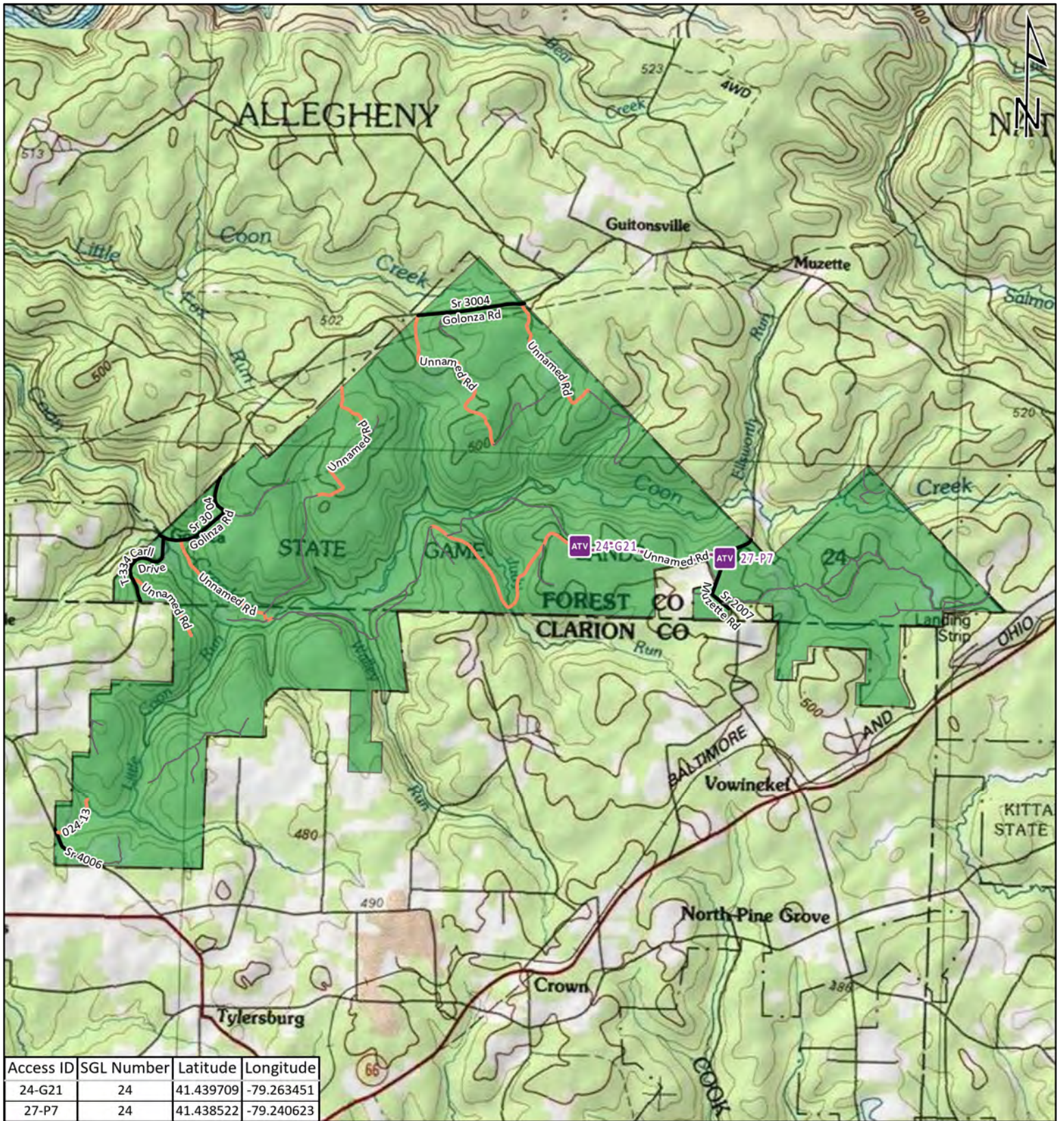


It is unlawful to ride ATVs on state game lands, except on designated roads open for persons issued a Disabled Persons Permit, and who have a valid registration from the Department of Conservation & Natural Resources.


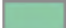





Table of Contents

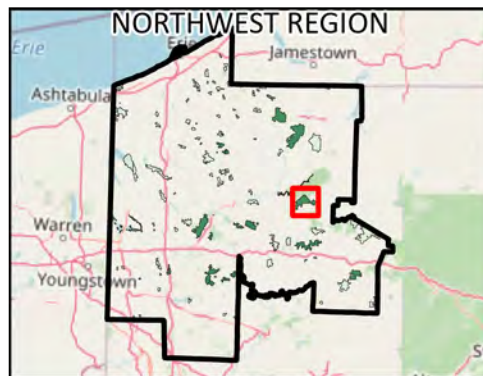
Northwest Region Overview Map	NW-2
State Game Lands 24	Clarion and Forest counties	NW-3
State Game Lands 39	Venango County.....	NW-4
State Game Lands 45	Clarion and Venango counties	NW-5
State Game Lands 74	Clarion and Jefferson counties.....	NW-6
State Game Lands 86	Warren County.....	NW-7
State Game Lands 95	Butler County	NW-8
State Game Lands 122	Crawford County.....	NW-9
State Game Lands 143	Warren County.....	NW-10
State Game Lands 151	Lawrence and Mercer counties	NW-11
State Game Lands 154	Erie County.....	NW-12
State Game Lands 178	Lawrence County	NW-13
State Game Lands 244	Jefferson County	NW-14
Shenango River Lake 2415	Mercer County	NW-15



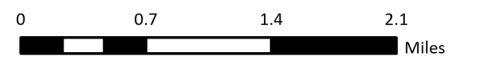
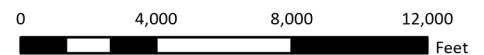


Access ID	SGL Number	Latitude	Longitude
24-G21	24	41.439709	-79.263451
27-P7	24	41.438522	-79.240623

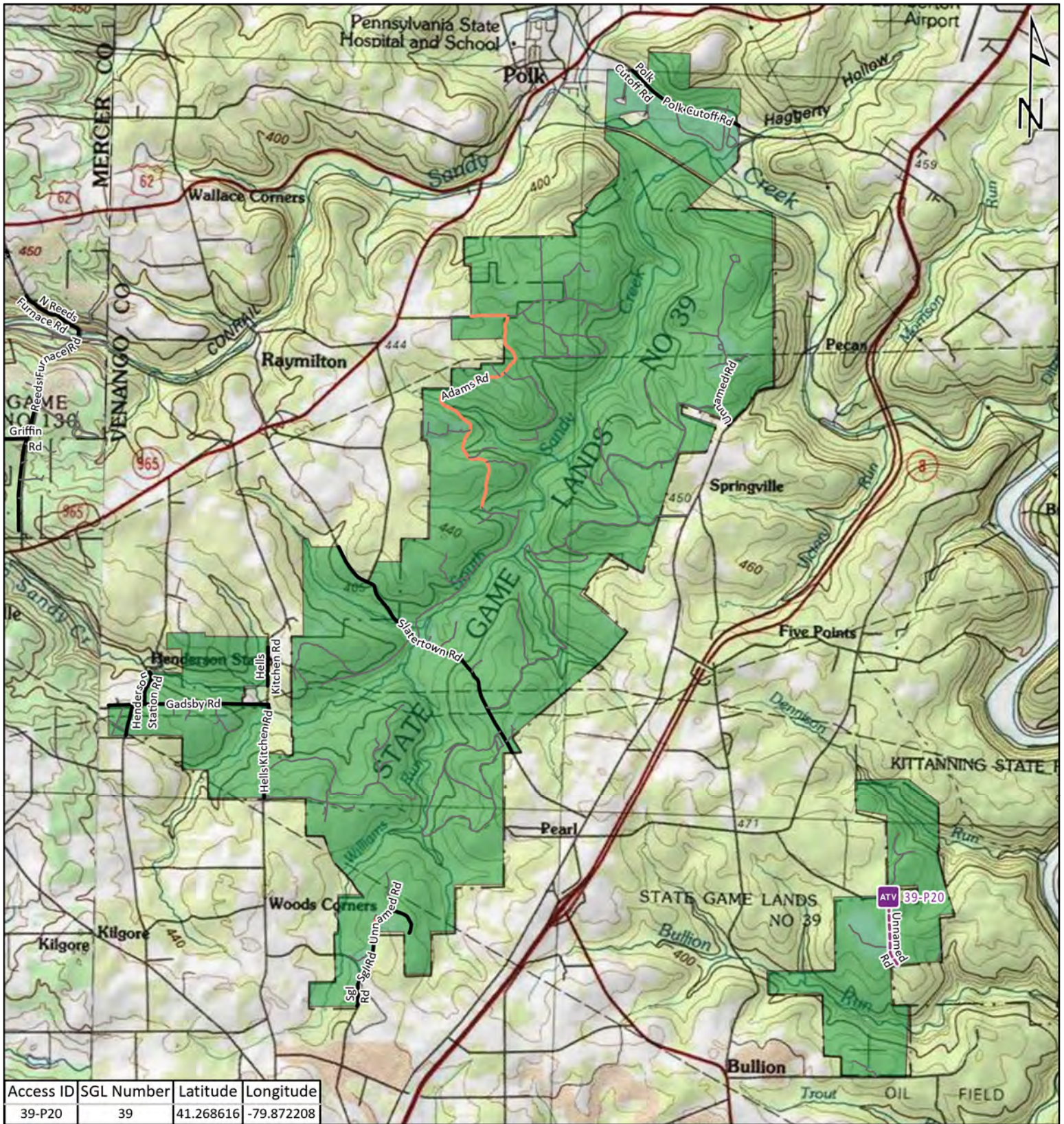
-  ATV Access Trail Start
-  State Game Land Boundary
-  Game Lands Roads
-  Roads Open to Vehicle Traffic
-  Roads Seasonally Open to Vehicle Traffic
-  Roads Closed to Vehicle Traffic
-  ATV Access with Permit



STATE GAME LAND 24

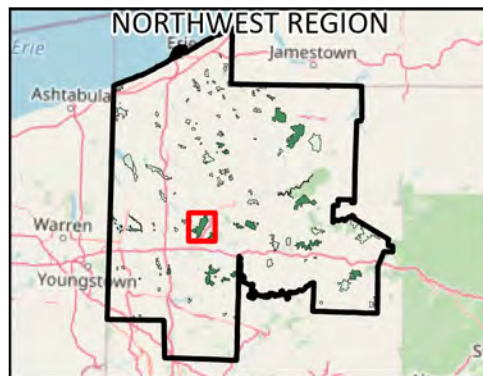


It is unlawful to ride ATV's on state game lands, except on designated roads open for persons issued a Disabled Person Permit, and who have a valid registration from the Department of Conservation & Natural Resources.

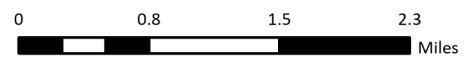
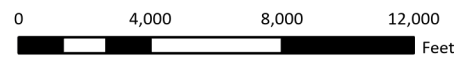


Access ID	SGL Number	Latitude	Longitude
39-P20	39	41.268616	-79.872208

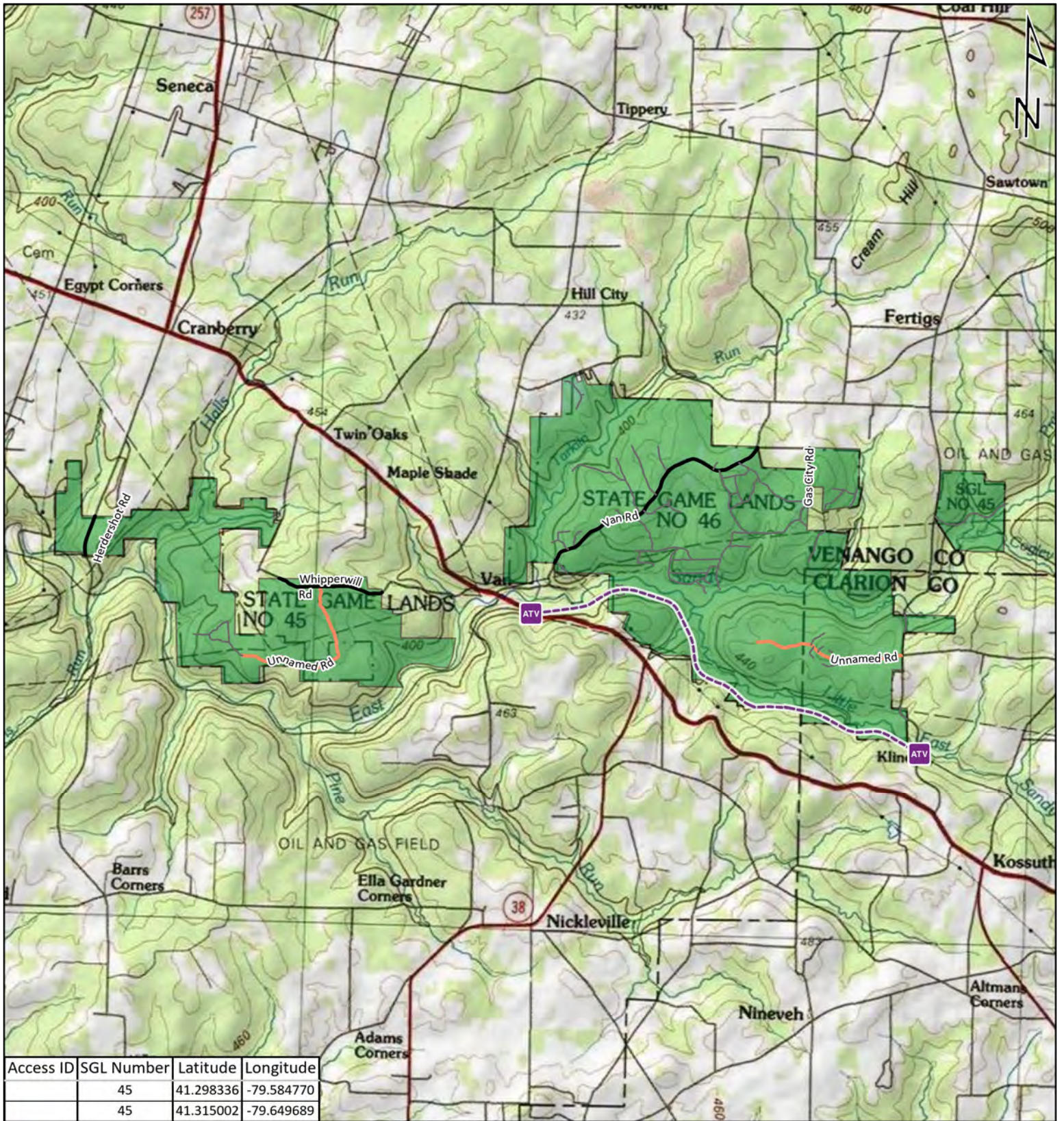
- ATV Access Trail Start
- State Game Land Boundary
- Game Lands Roads
- Roads Open to Vehicle Traffic
- Roads Seasonally Open to Vehicle Traffic
- Roads Closed to Vehicle Traffic
- ATV Access with Permit










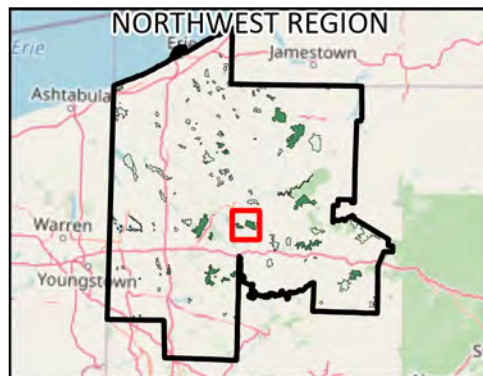
STATE GAME LAND 39



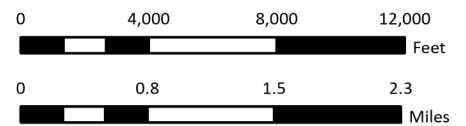
It is unlawful to ride ATV's on state game lands, except on designated roads open for persons issued a Disabled Person Permit, and who have a valid registration from the Department of Conservation & Natural Resources.



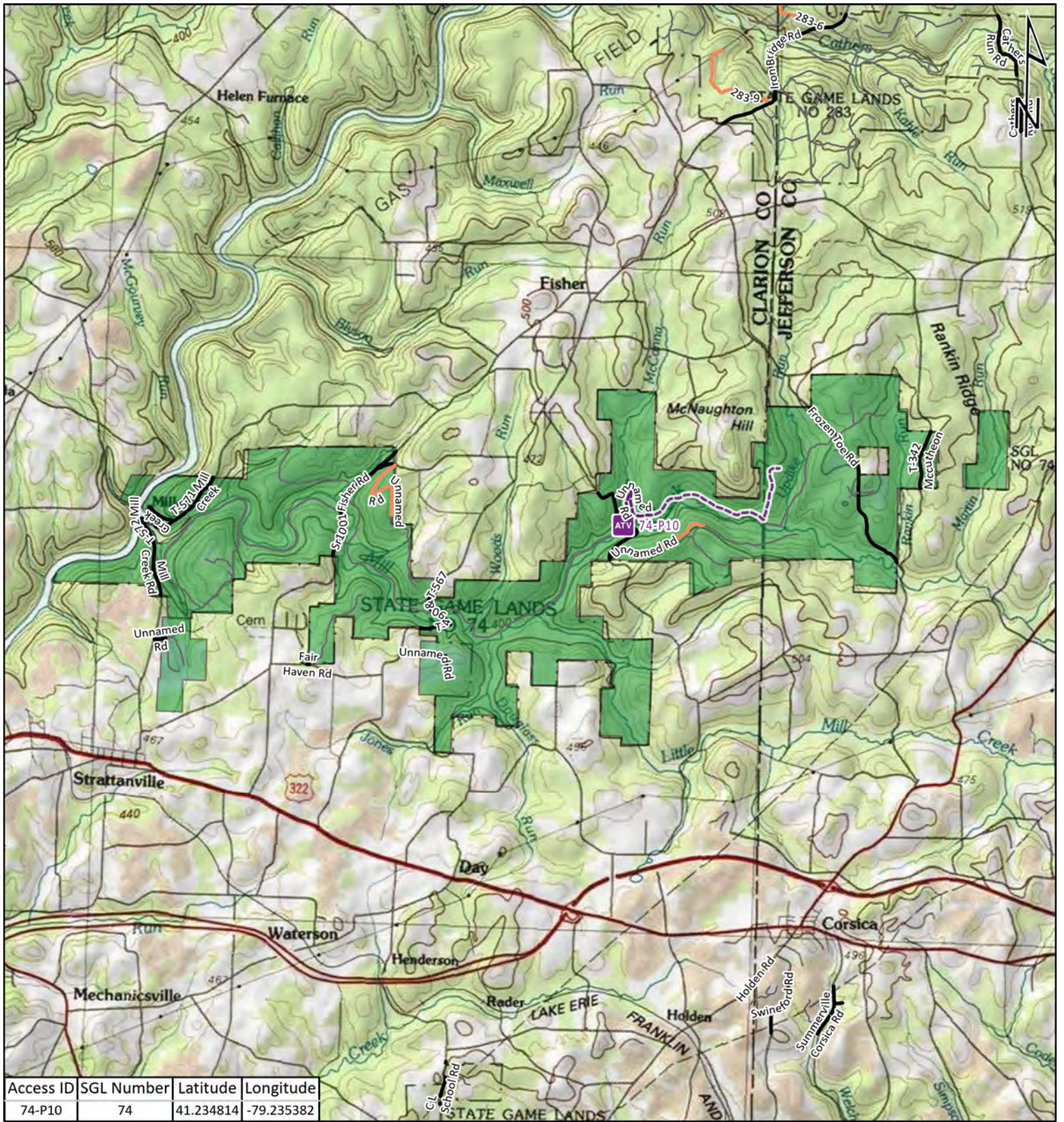
-  ATV Access Trail Start
-  State Game Land Boundary
-  Game Lands Roads
-  Roads Open to Vehicle Traffic
-  Roads Seasonally Open to Vehicle Traffic
-  Roads Closed to Vehicle Traffic
-  ATV Access with Permit




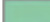





STATE GAME LAND 45

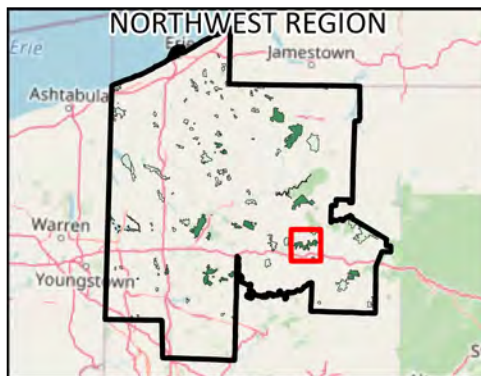


It is unlawful to ride ATV's on state game lands, except on designated roads open for persons issued a Disabled Person Permit, and who have a valid registration from the Department of Conservation & Natural Resources.

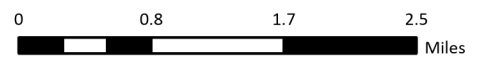
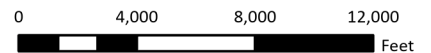


Access ID	SGL Number	Latitude	Longitude
74-P10	74	41.234814	-79.235382

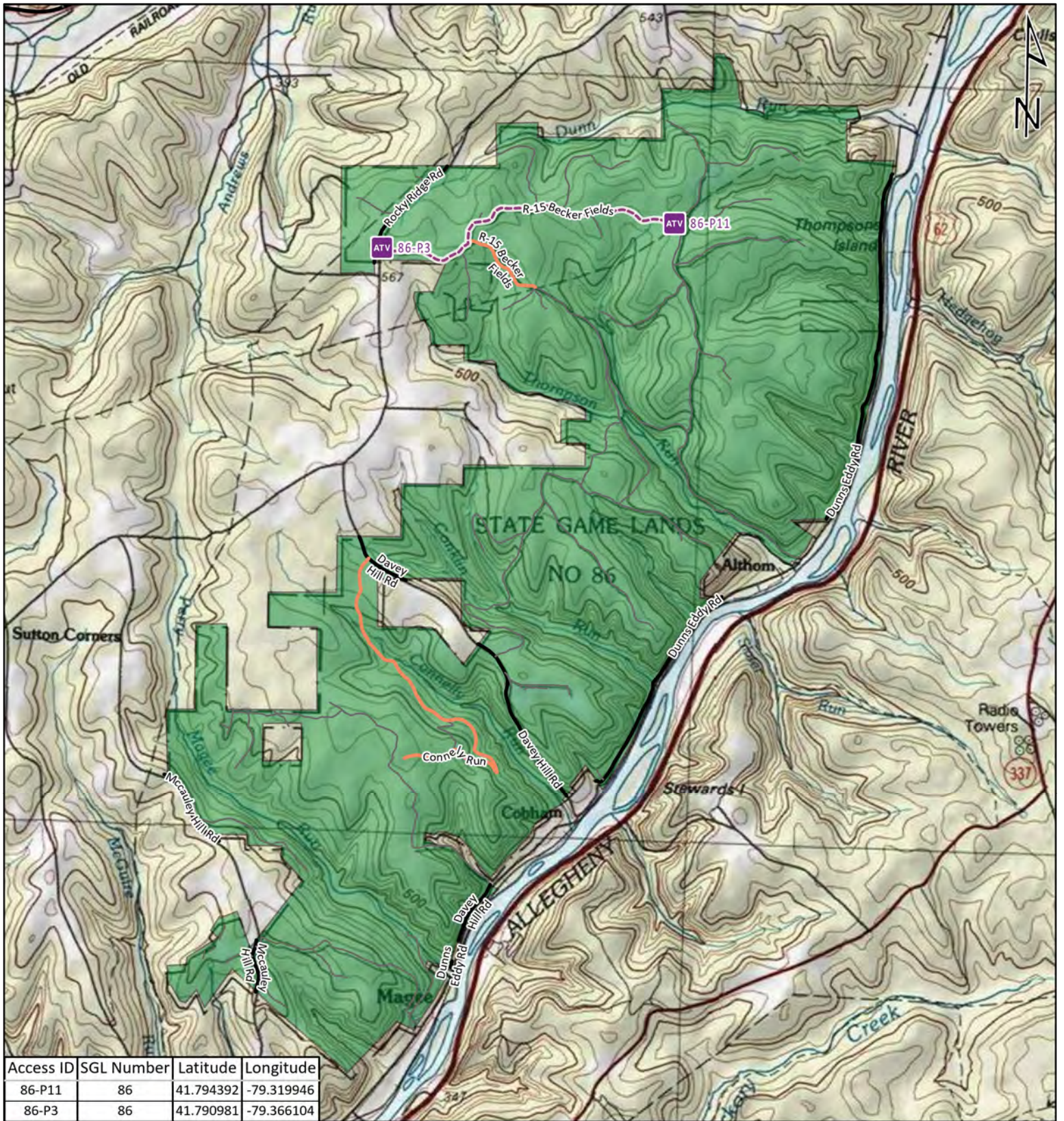
-  ATV Access Trail Start
-  State Game Land Boundary
-  Game Lands Roads
-  Roads Open to Vehicle Traffic
-  Roads Seasonally Open to Vehicle Traffic
-  Roads Closed to Vehicle Traffic
-  ATV Access with Permit










STATE GAME LAND 74



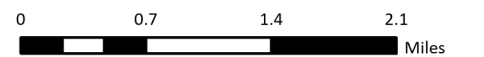
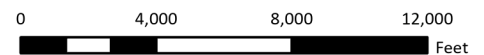
It is unlawful to ride ATV's on state game lands, except on designated roads open for persons issued a Disabled Person Permit, and who have a valid registration from the Department of Conservation & Natural Resources.



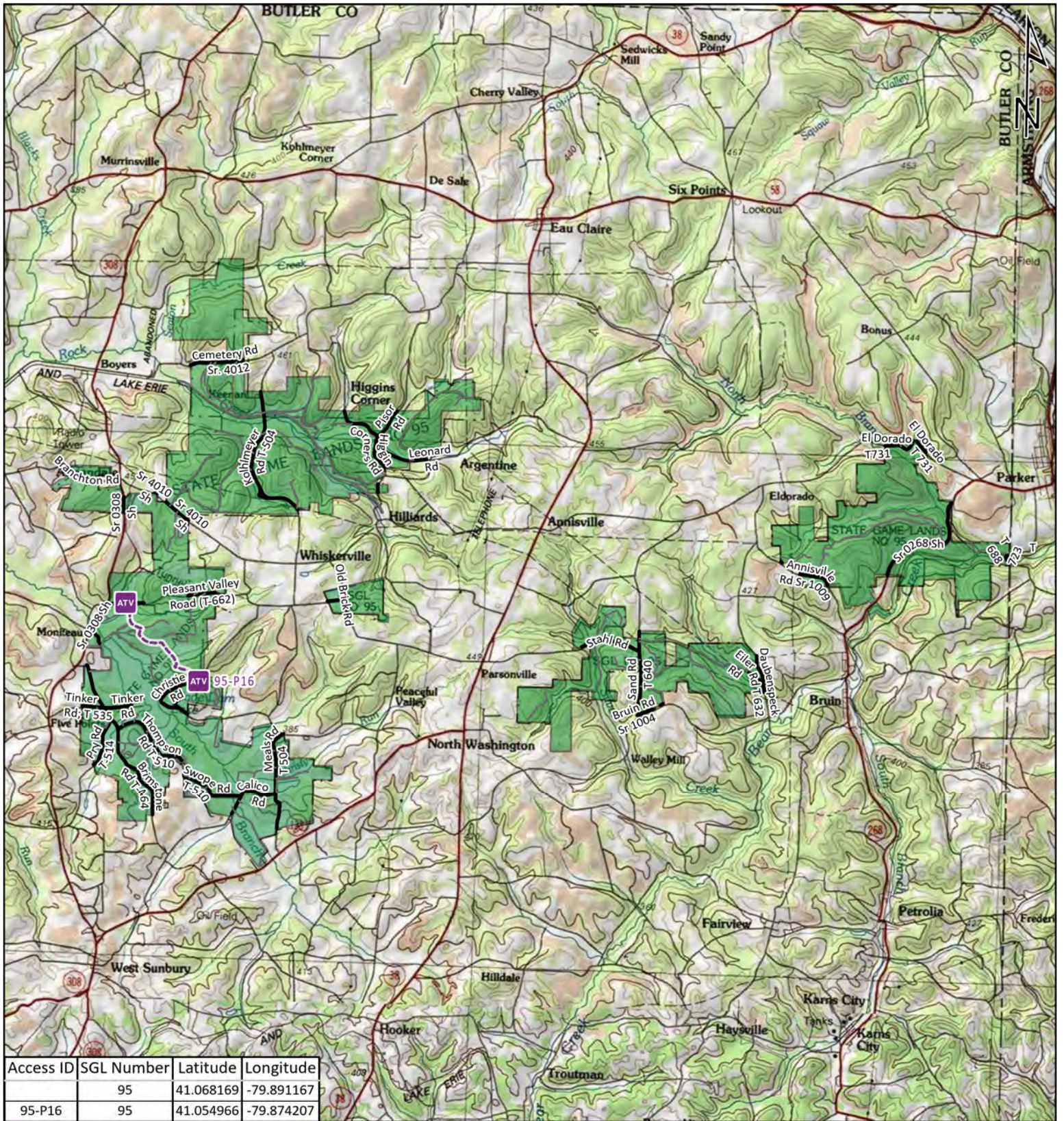
-  ATV Access Trail Start
-  State Game Land Boundary
-  Game Lands Roads
-  Roads Open to Vehicle Traffic
-  Roads Seasonally Open to Vehicle Traffic
-  Roads Closed to Vehicle Traffic
-  ATV Access with Permit










STATE GAME LAND 86



It is unlawful to ride ATV's on state game lands, except on designated roads open for persons issued a Disabled Person Permit, and who have a valid registration from the Department of Conservation & Natural Resources.



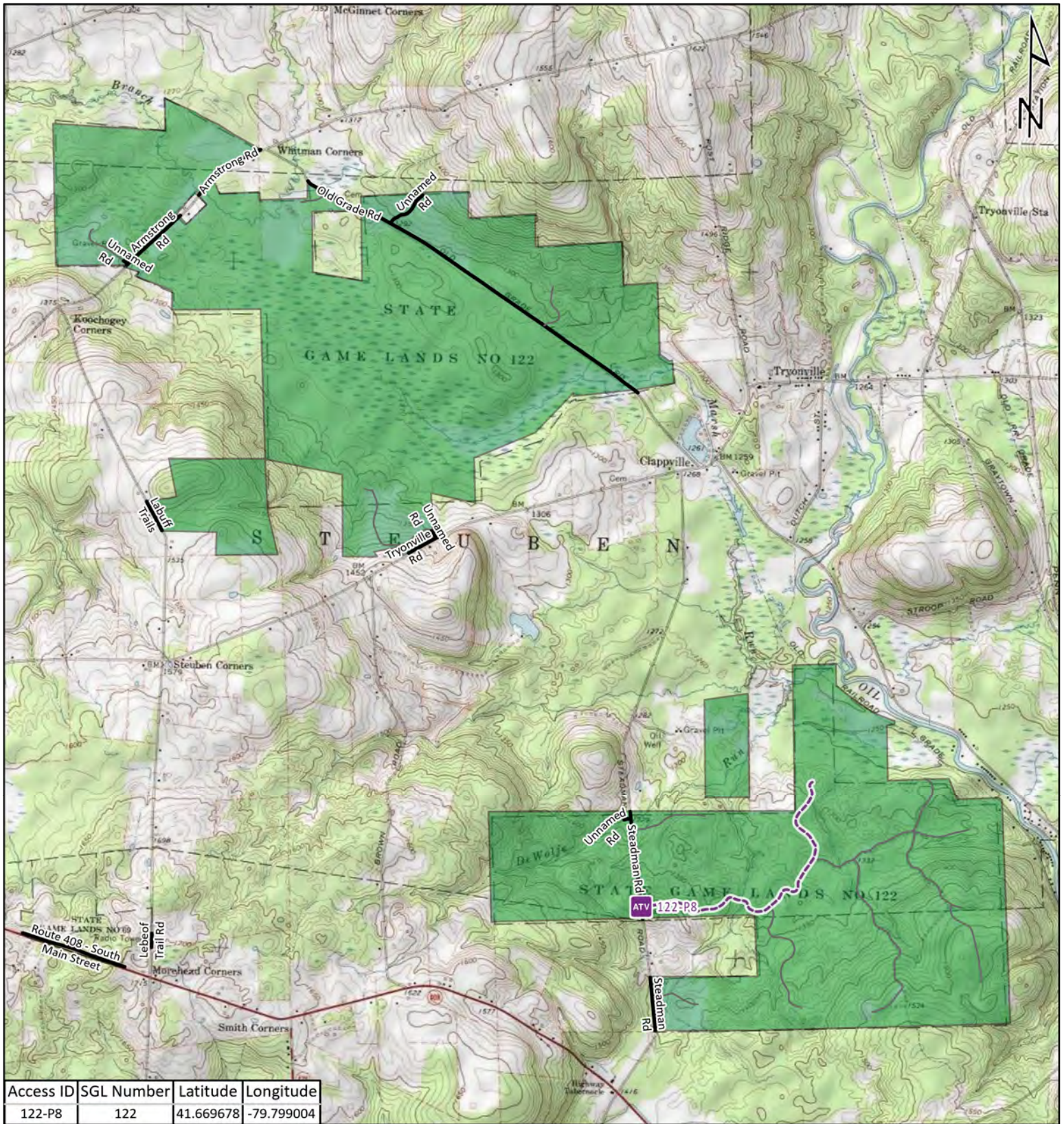
-  ATV Access Trail Start
-  State Game Land Boundary
-  Game Lands Roads
-  Roads Open to Vehicle Traffic
-  Roads Seasonally Open to Vehicle Traffic
-  Roads Closed to Vehicle Traffic
-  ATV Access with Permit









STATE GAME LAND 95

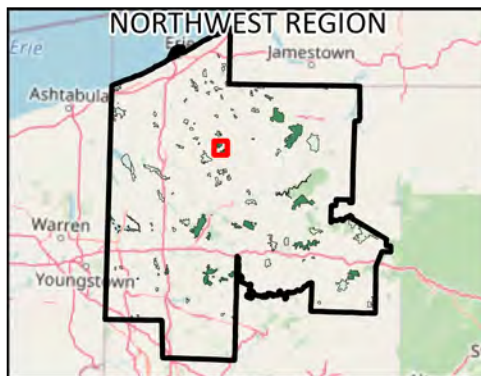


It is unlawful to ride ATV's on state game lands, except on designated roads open for persons issued a Disabled Person Permit, and who have a valid registration from the Department of Conservation & Natural Resources.

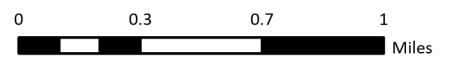
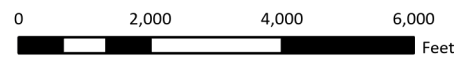


Access ID	SGL Number	Latitude	Longitude
122-P8	122	41.669678	-79.799004

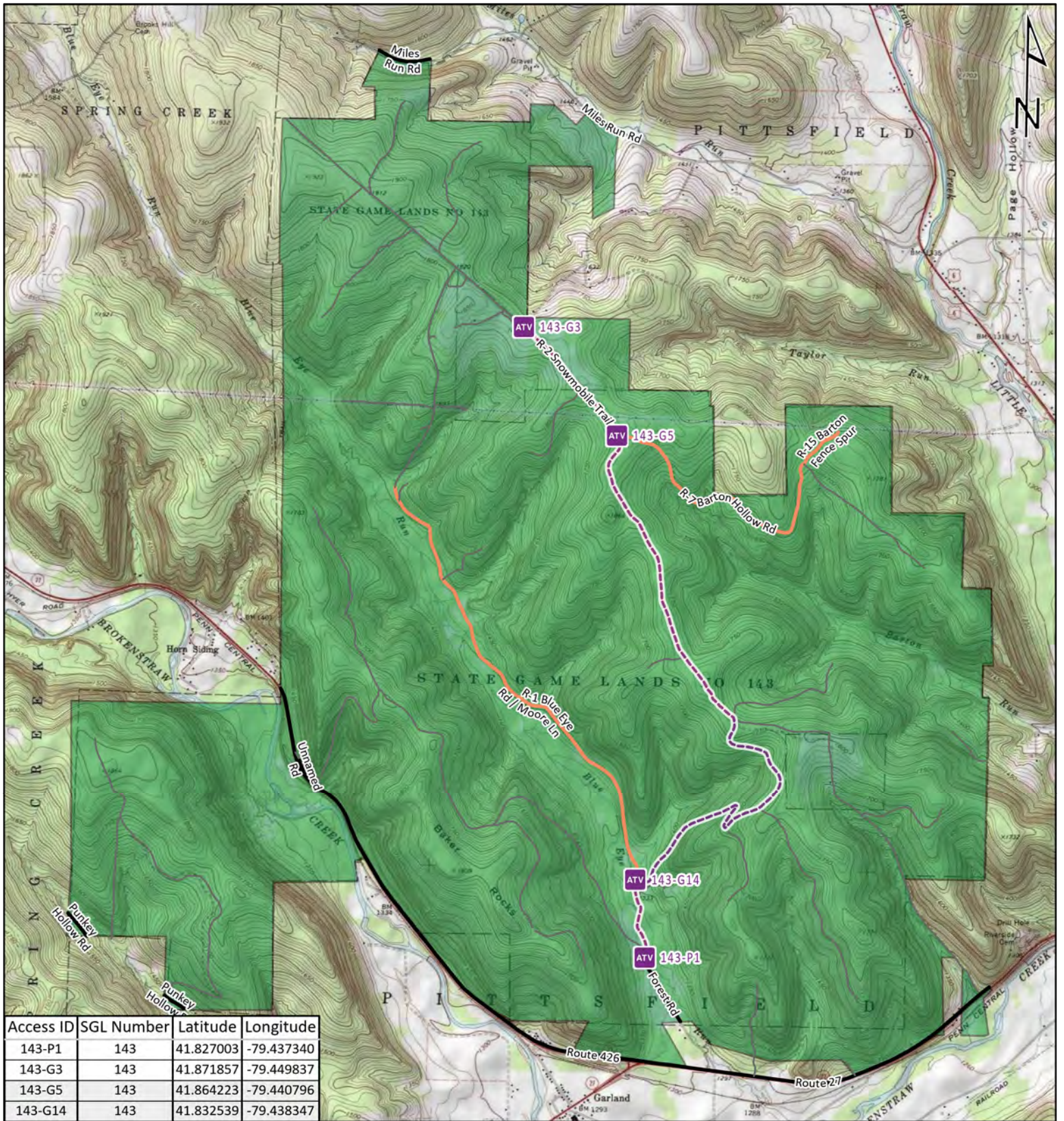
-  ATV Access Trail Start
-  State Game Land Boundary
- Game Lands Roads
-  Roads Open to Vehicle Traffic
-  Roads Seasonally Open to Vehicle Traffic
-  Roads Closed to Vehicle Traffic
-  ATV Access with Permit









STATE GAME LAND 122

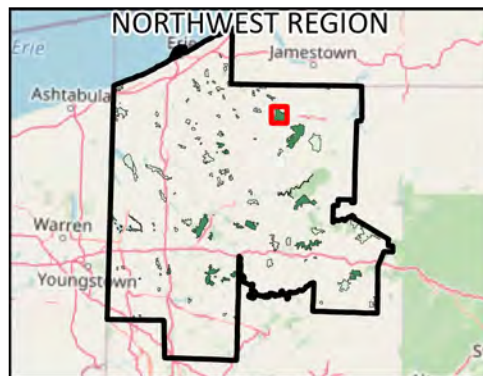


It is unlawful to ride ATV's on state game lands, except on designated roads open for persons issued a Disabled Person Permit, and who have a valid registration from the Department of Conservation & Natural Resources.

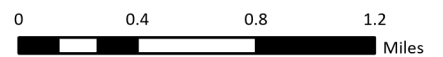
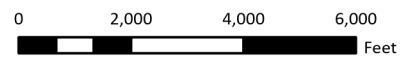


Access ID	SGL Number	Latitude	Longitude
143-P1	143	41.827003	-79.437340
143-G3	143	41.871857	-79.449837
143-G5	143	41.864223	-79.440796
143-G14	143	41.832539	-79.438347

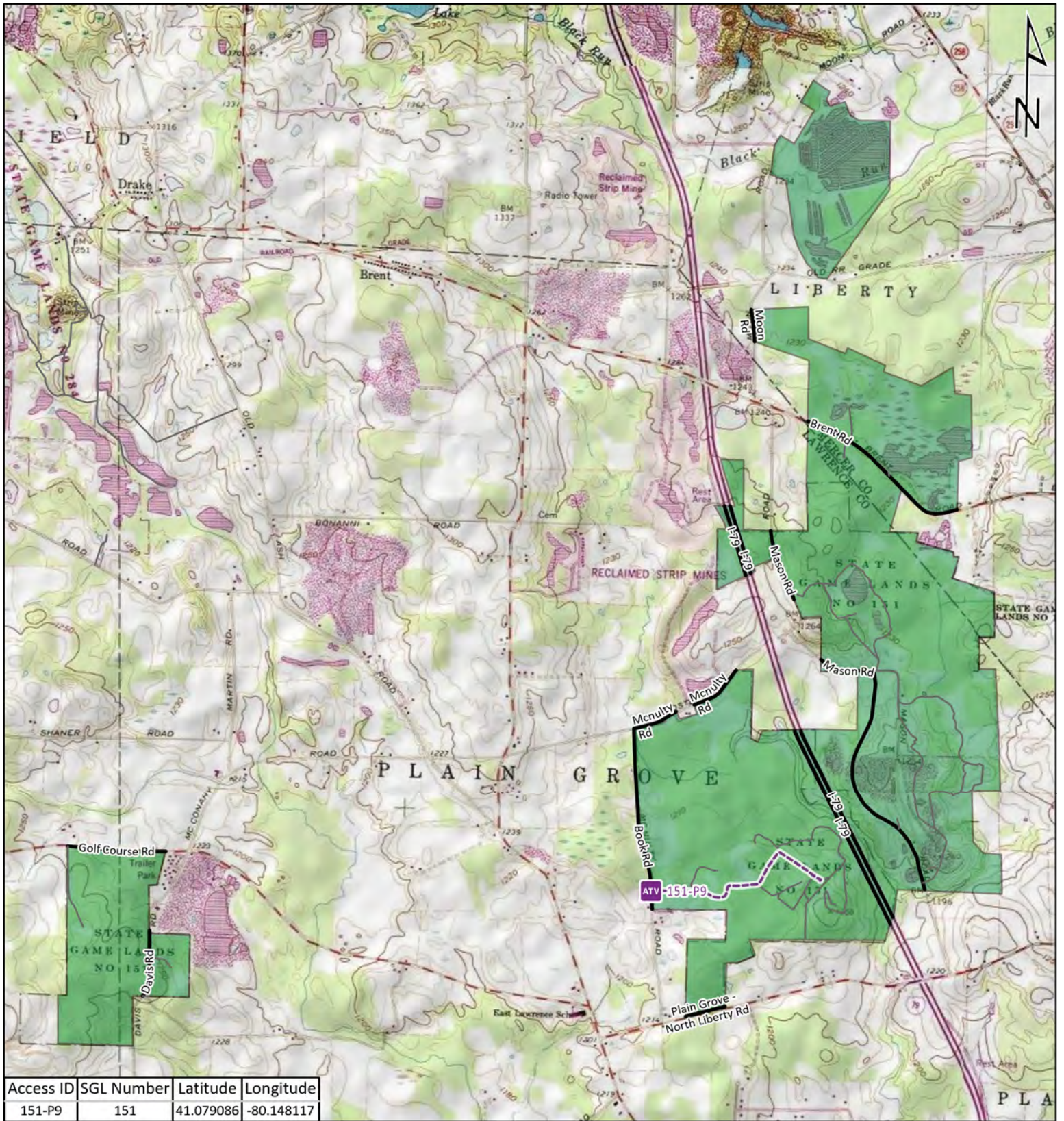
-  ATV Access Trail Start
-  State Game Land Boundary
-  Roads Open to Vehicle Traffic
-  Roads Seasonally Open to Vehicle Traffic
-  Roads Closed to Vehicle Traffic
-  ATV Access with Permit










STATE GAME LAND 143

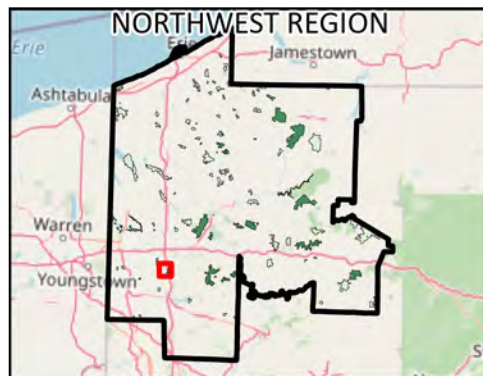


It is unlawful to ride ATV's on state game lands, except on designated roads open for persons issued a Disabled Person Permit, and who have a valid registration from the Department of Conservation & Natural Resources.

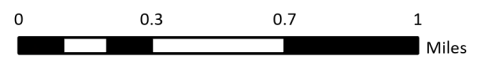
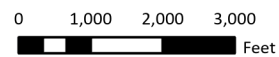


Access ID	SGL Number	Latitude	Longitude
151-P9	151	41.079086	-80.148117

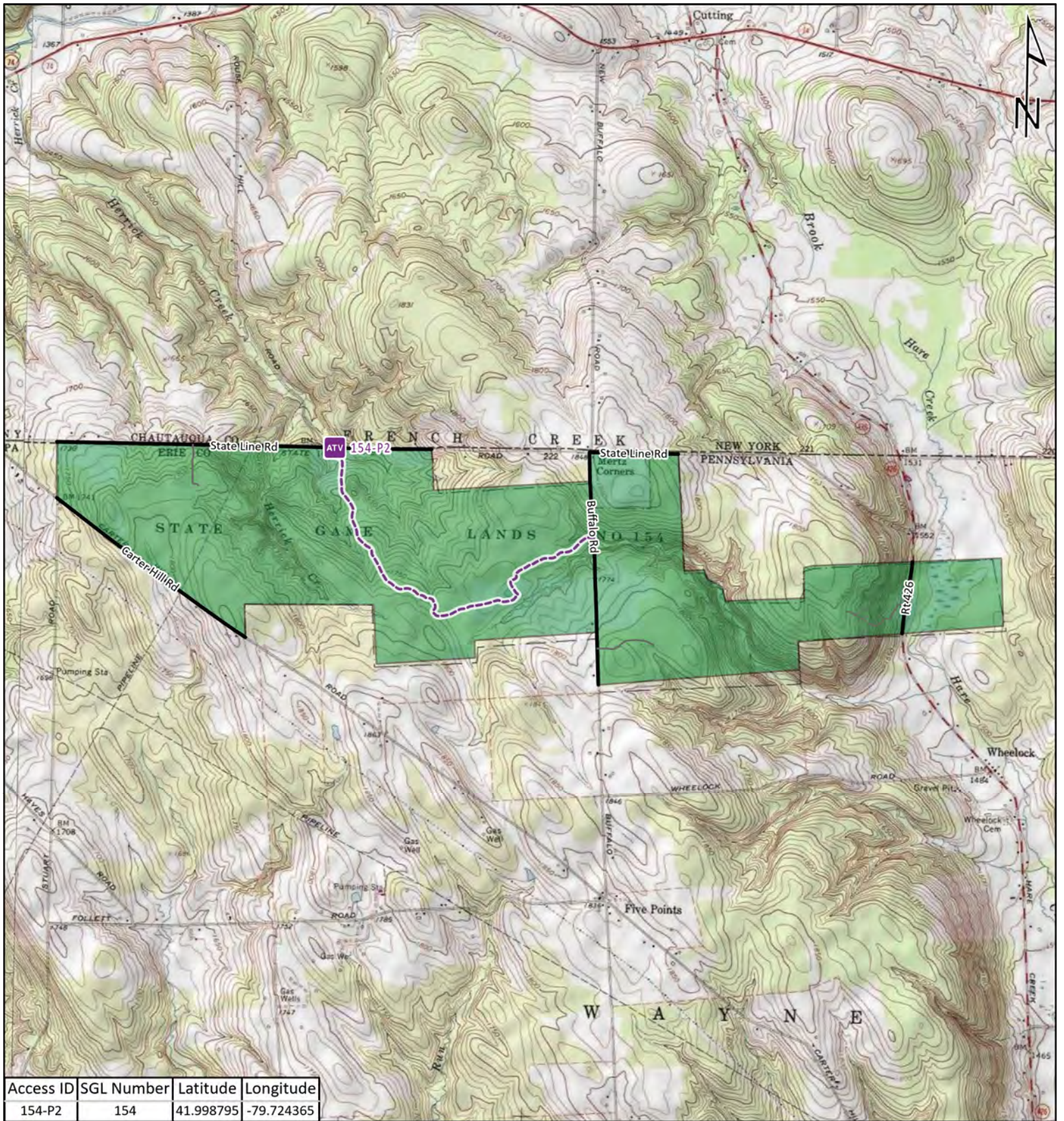
-  ATV Access Trail Start
-  State Game Land Boundary
-  Game Lands Roads
-  Roads Open to Vehicle Traffic
-  Roads Seasonally Open to Vehicle Traffic
-  Roads Closed to Vehicle Traffic
-  ATV Access with Permit





STATE GAME LAND 151



It is unlawful to ride ATV's on state game lands, except on designated roads open for persons issued a Disabled Person Permit, and who have a valid registration from the Department of Conservation & Natural Resources.



Access ID	SGL Number	Latitude	Longitude
154-P2	154	41.998795	-79.724365

-  ATV Access Trail Start
-  State Game Land Boundary
-  Game Lands Roads
-  Roads Open to Vehicle Traffic
-  Roads Seasonally Open to Vehicle Traffic
-  Roads Closed to Vehicle Traffic
-  ATV Access with Permit










STATE GAME LAND 154

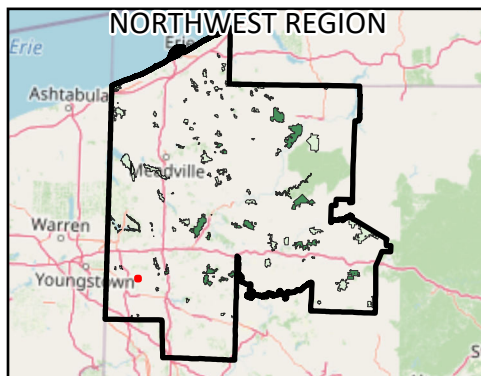


It is unlawful to ride ATV's on state game lands, except on designated roads open for persons issued a Disabled Person Permit, and who have a valid registration from the Department of Conservation & Natural Resources.

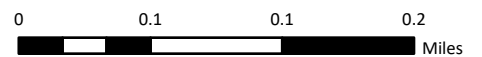
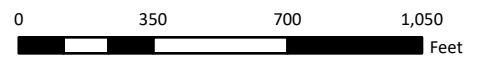


Access ID	SGL Number	Latitude	Longitude
178-2-G2	178	41.052887	-80.318192

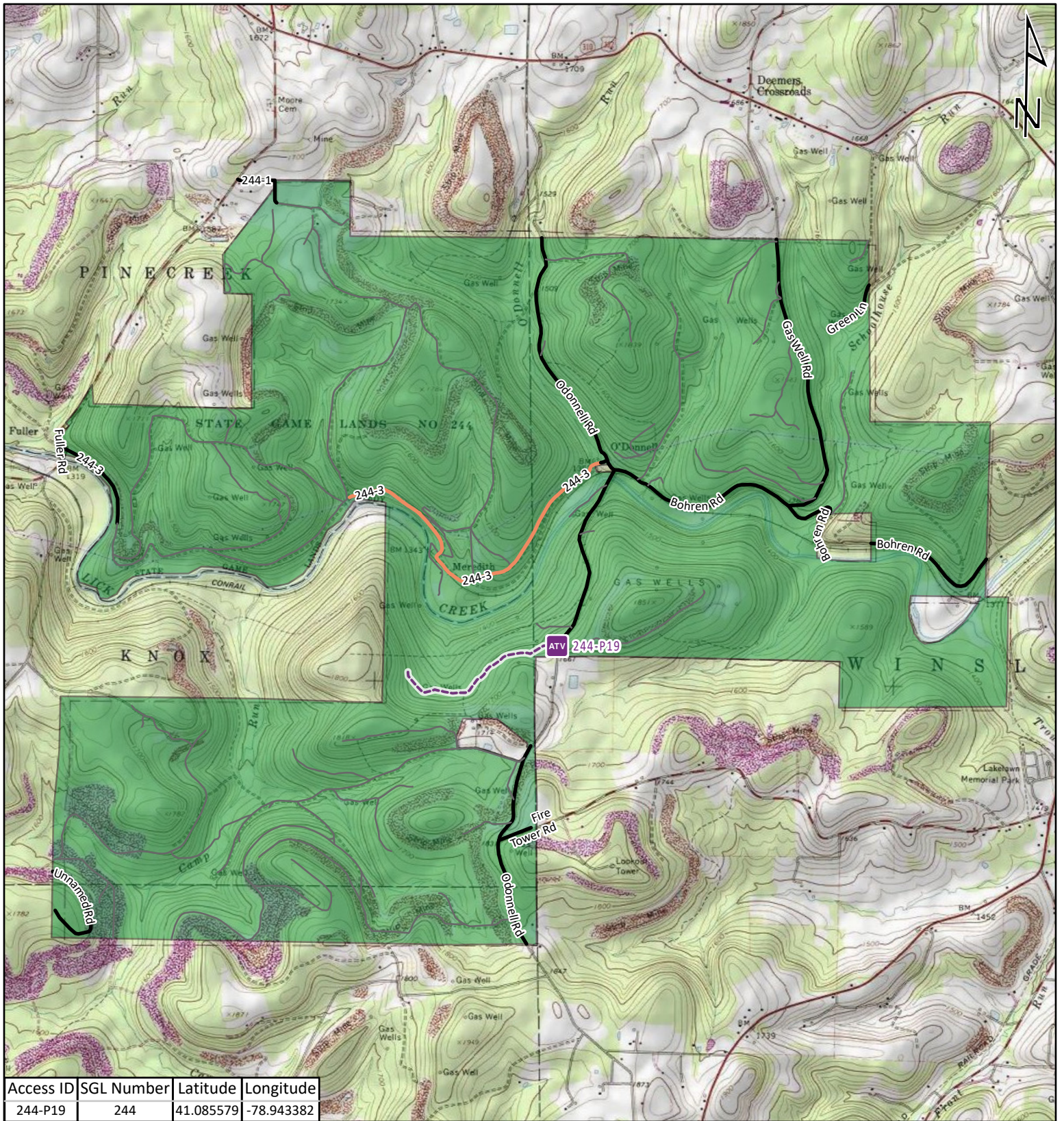
-  ATV Access Trail Start
-  State Game Land Boundary
-  Game Lands Roads
-  Roads Open to Vehicle Traffic
-  Roads Seasonally Open to Vehicle Traffic
-  Roads Closed to Vehicle Traffic
-  ATV Access with Permit




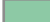





STATE GAME LAND 178

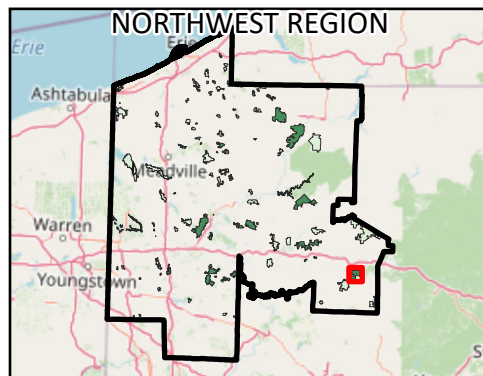


It is unlawful to ride ATV's on state game lands, except on designated roads open for persons issued a Disabled Person Permit, and who have a valid registration from the Department of Conservation & Natural Resources.

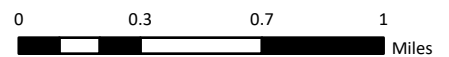
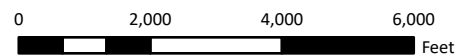


Access ID	SGL Number	Latitude	Longitude
244-P19	244	41.085579	-78.943382

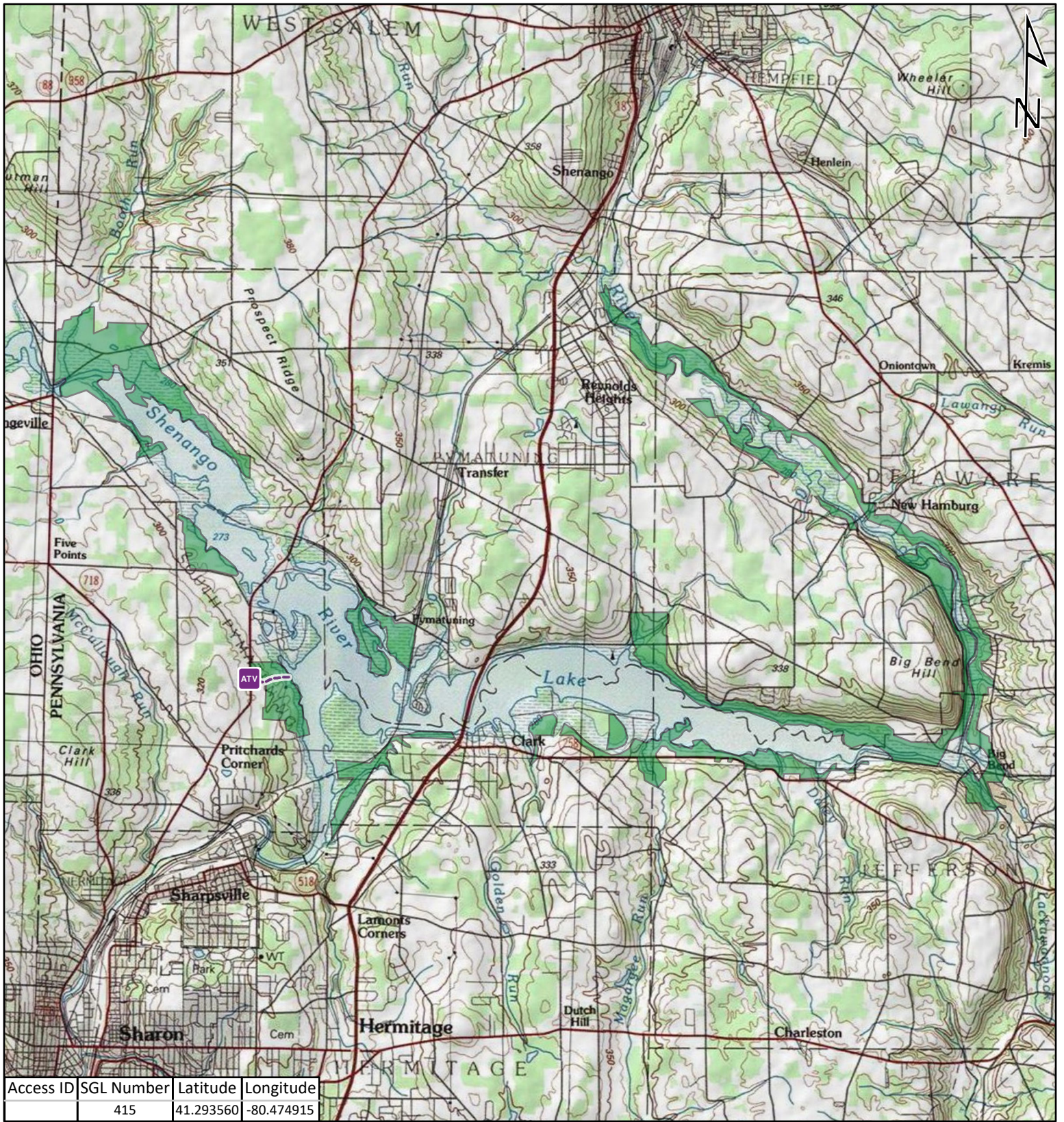
-  ATV Access Trail Start
-  State Game Land Boundary
-  Game Lands Roads
-  Roads Open to Vehicle Traffic
-  Roads Seasonally Open to Vehicle Traffic
-  Roads Closed to Vehicle Traffic
-  ATV Access with Permit



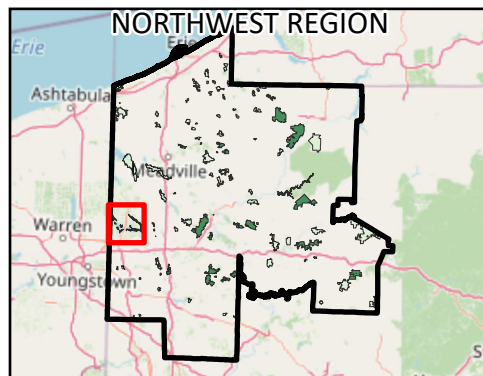
STATE GAME LAND 244



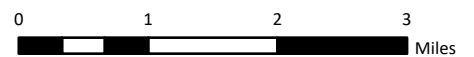
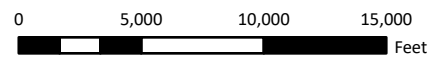
It is unlawful to ride ATV's on state game lands, except on designated roads open for persons issued a Disabled Person Permit, and who have a valid registration from the Department of Conservation & Natural Resources.



- ATV Access Trail Start
- State Game Land Boundary
- Game Lands Roads
- Roads Open to Vehicle Traffic
- Roads Seasonally Open to Vehicle Traffic
- Roads Closed to Vehicle Traffic
- ATV Access with Permit



STATE GAME LAND 2415



It is unlawful to ride ATV's on state game lands, except on designated roads open for persons issued a Disabled Person Permit, and who have a valid registration from the Department of Conservation & Natural Resources.