



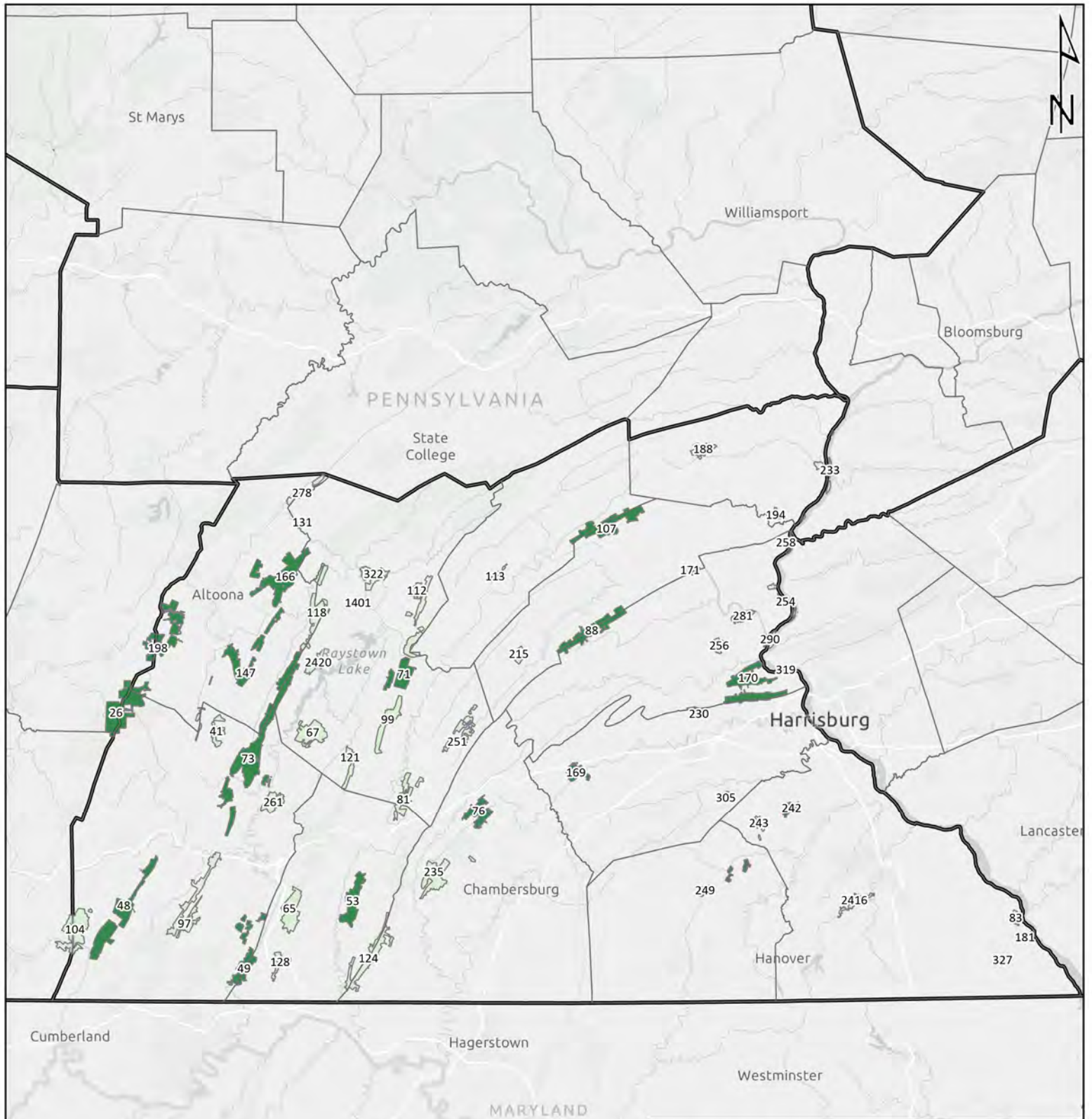
Southcentral Region





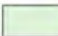
It is unlawful to ride ATVs on state game lands, except on designated roads open for persons issued a Disabled Persons Permit, and who have a valid registration from the Department of Conservation & Natural Resources.


Table of Contents

Southcentral Region Overview Map	SC-2
State Game Lands 26 Bedford, Blair, Cambria, and Somerset counties.....	SC-3
State Game Lands 48 Bedford County.....	SC-4
State Game Lands 49 Bedford and Fulton counties	SC-5
State Game Lands 53 Fulton County.....	SC-6
State Game Lands 71 Huntingdon County.....	SC-7
State Game Lands 73 Bedford, Blair, and Huntingdon counties	SC-8
State Game Lands 76 Franklin County.....	SC-9
State Game Lands 88 Juniata and Perry counties.....	SC-10
State Game Lands 107 Juniata and Mifflin counties.....	SC-11
State Game Lands 147 Blair County.....	SC-12
State Game Lands 166 Blair and Huntingdon county	SC-13
State Game Lands 169 Cumberland County	SC-14
State Game Lands 170 Cumberland and Perry counties	SC-15
State Game Lands 198 Blair and Cambria County	SC-16
State Game Lands 230 Cumberland and Perry counties	SC-17
State Game Lands 242 York County.....	SC-18
State Game Lands 249 Adams County.....	SC-19

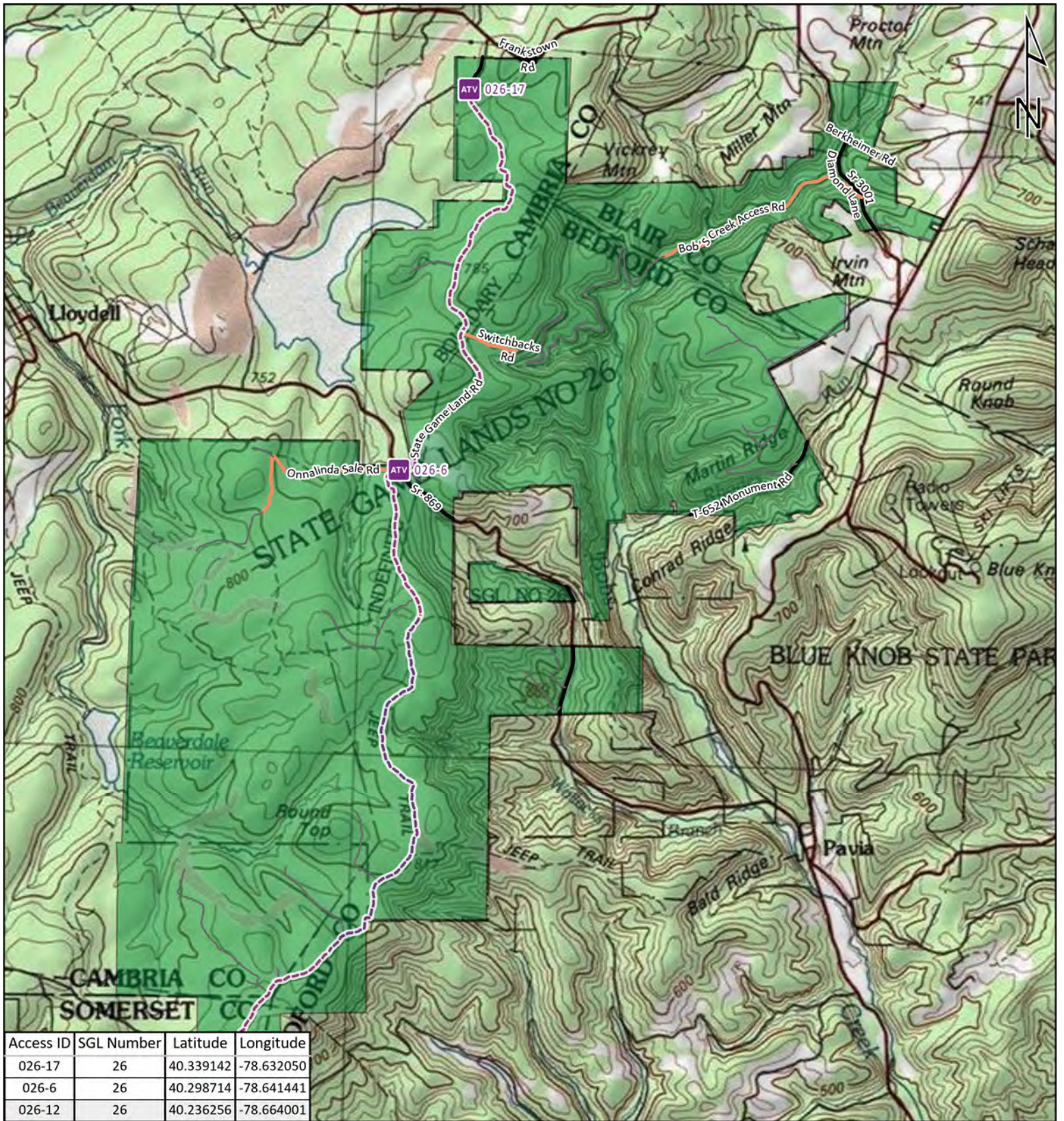


**Pennsylvania Game Commission
Southcentral Region**

-  PA Game Commission Regions
- State Game Lands**
-  ATV Access with Permit
-  No ATV Access

0 10 20 30 40
 Miles

Page SC-2

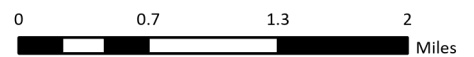
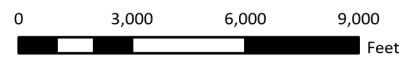


Access ID	SGL Number	Latitude	Longitude
026-17	26	40.339142	-78.632050
026-6	26	40.298714	-78.641441
026-12	26	40.236256	-78.664001

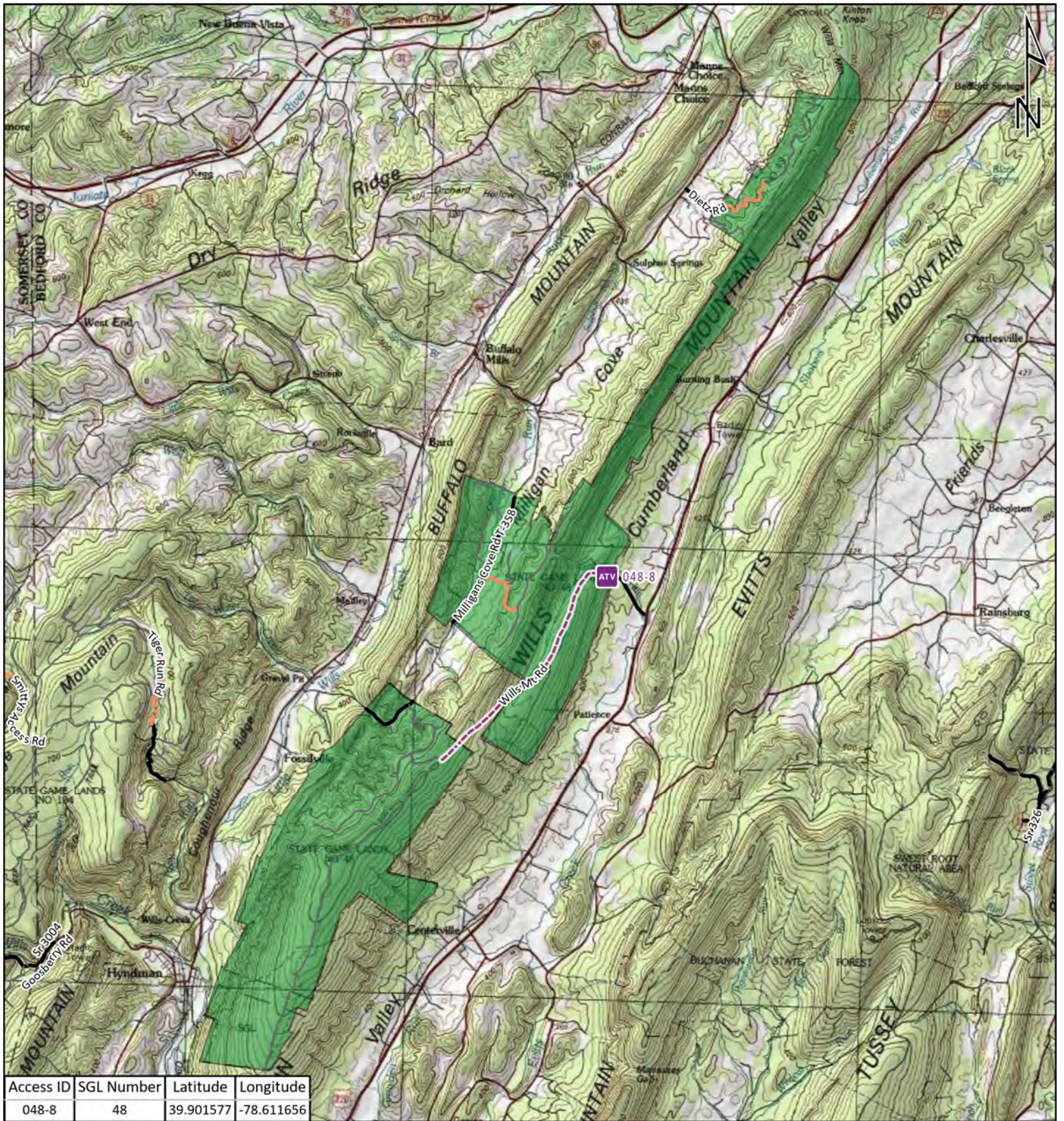
- ATV Access Trail Start
- State Game Land Boundary
- Game Land Roads
- Roads Open to Vehicle Traffic
- Roads Seasonally Open to Vehicle Traffic
- Roads Closed to Vehicle Traffic
- ATV Access with Permit



STATE GAME LAND 26



It is unlawful to ride ATV's on state game lands, except on designated roads open for persons issued a Disabled Person Permit, and who have a valid registration from the Department of Conservation & Natural Resources.

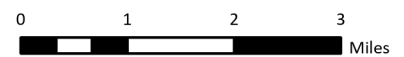
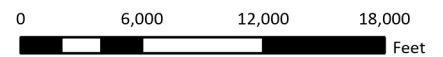


Access ID	SGL Number	Latitude	Longitude
048-8	48	39.901577	-78.611656

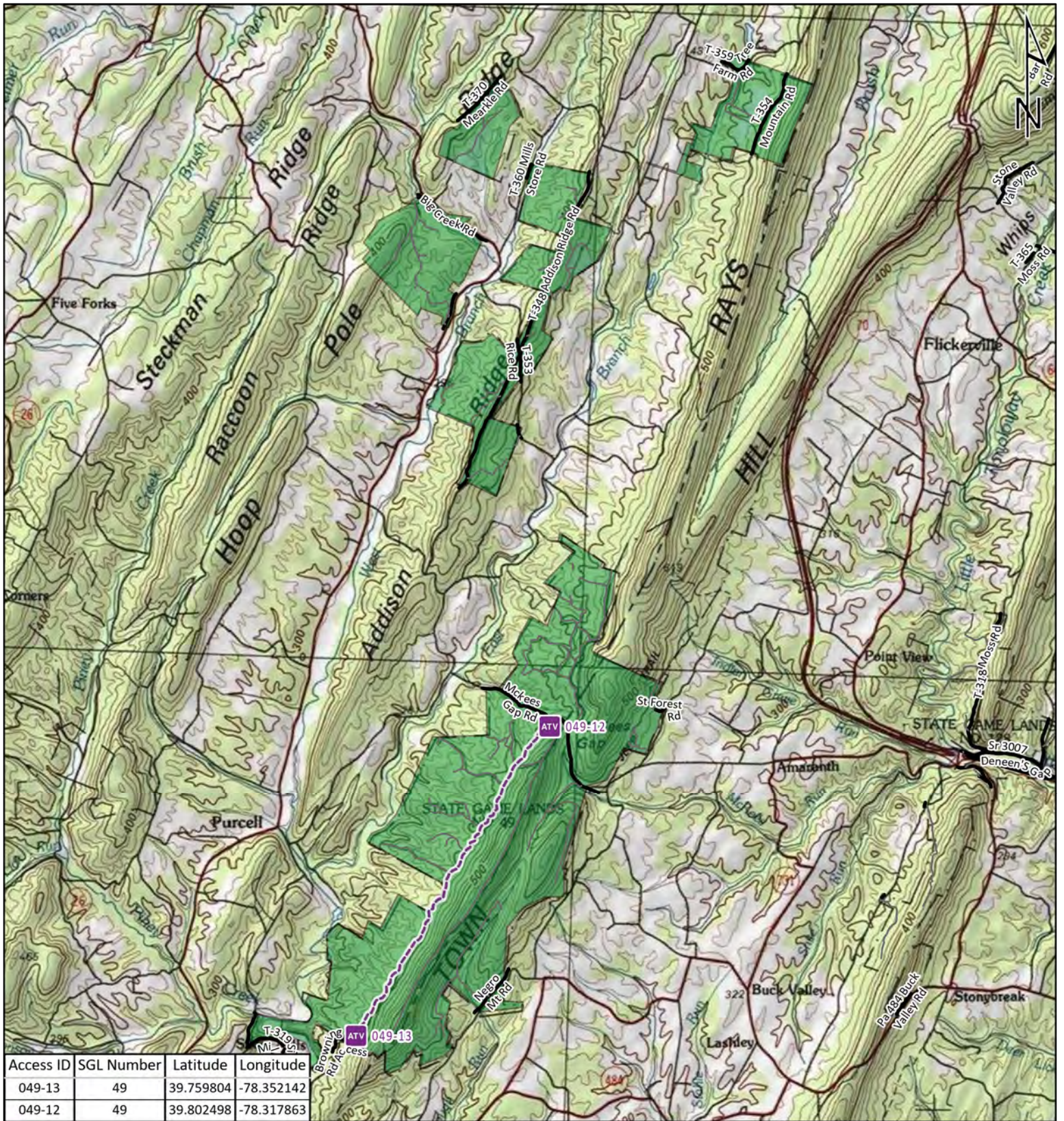
- ATV Access Trail Start
- State Game Land Boundary
- Game Land Roads
- Roads Open to Vehicle Traffic
- Roads Seasonally Open to Vehicle Traffic
- Roads Closed to Vehicle Traffic
- ATV Access with Permit









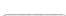
STATE GAME LAND 48



It is unlawful to ride ATV's on state game lands, except on designated roads open for persons issued a Disabled Person Permit, and who have a valid registration from the Department of Conservation & Natural Resources.

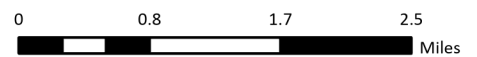
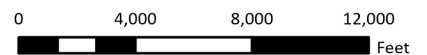


Access ID	SGL Number	Latitude	Longitude
049-13	49	39.759804	-78.352142
049-12	49	39.802498	-78.317863

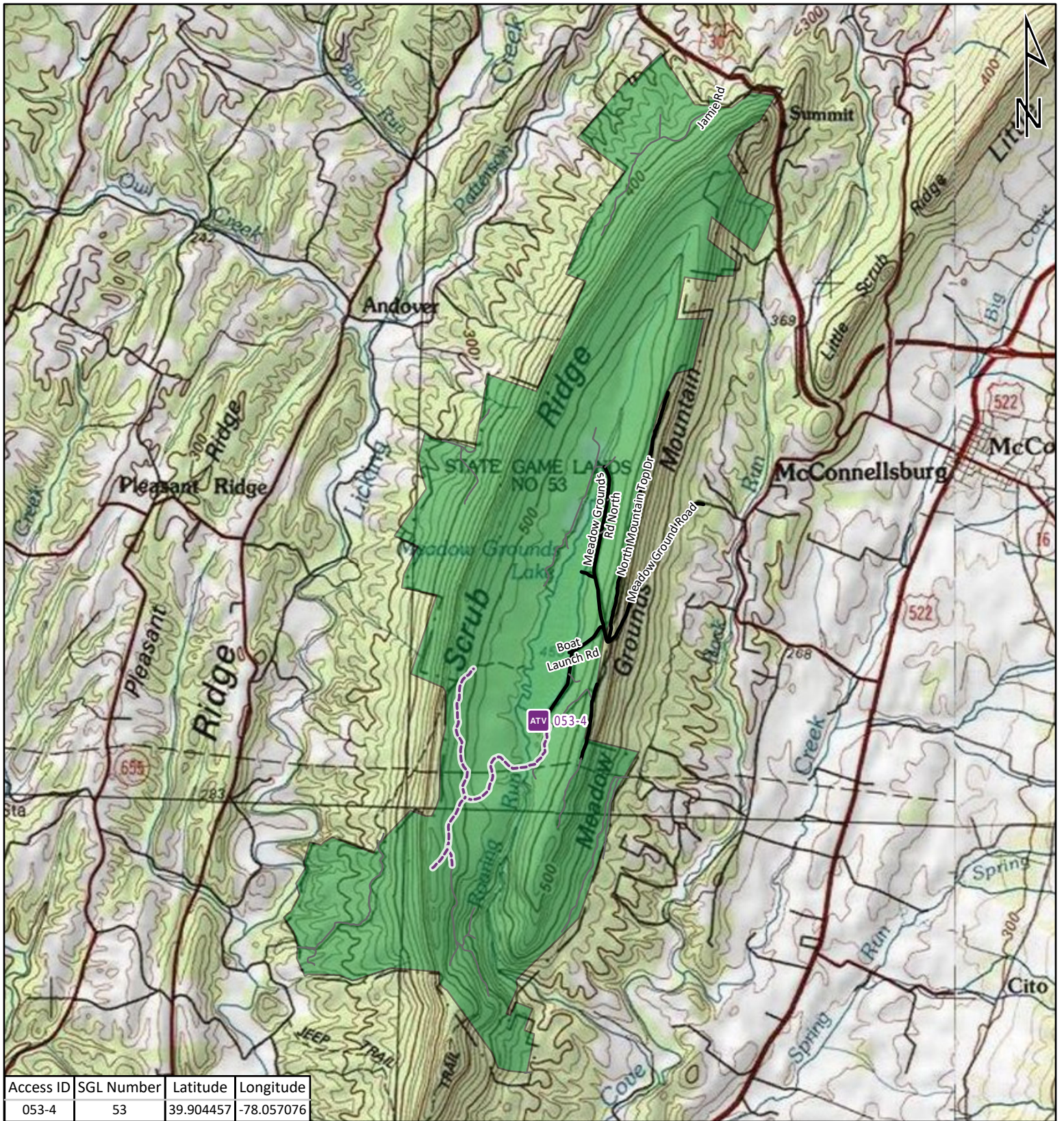
-  ATV Access Trail Start
-  State Game Land Boundary
-  Game Land Roads
-  Roads Open to Vehicle Traffic
-  Roads Seasonally Open to Vehicle Traffic
-  Roads Closed to Vehicle Traffic
-  ATV Access with Permit




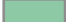




STATE GAME LAND 49

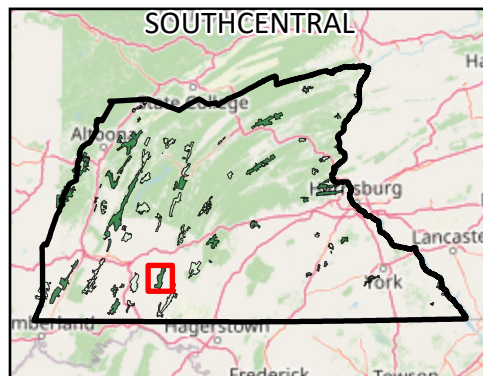


It is unlawful to ride ATV's on state game lands, except on designated roads open for persons issued a Disabled Person Permit, and who have a valid registration from the Department of Conservation & Natural Resources.

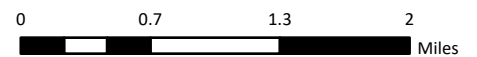
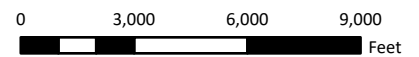


Access ID	SGL Number	Latitude	Longitude
053-4	53	39.904457	-78.057076

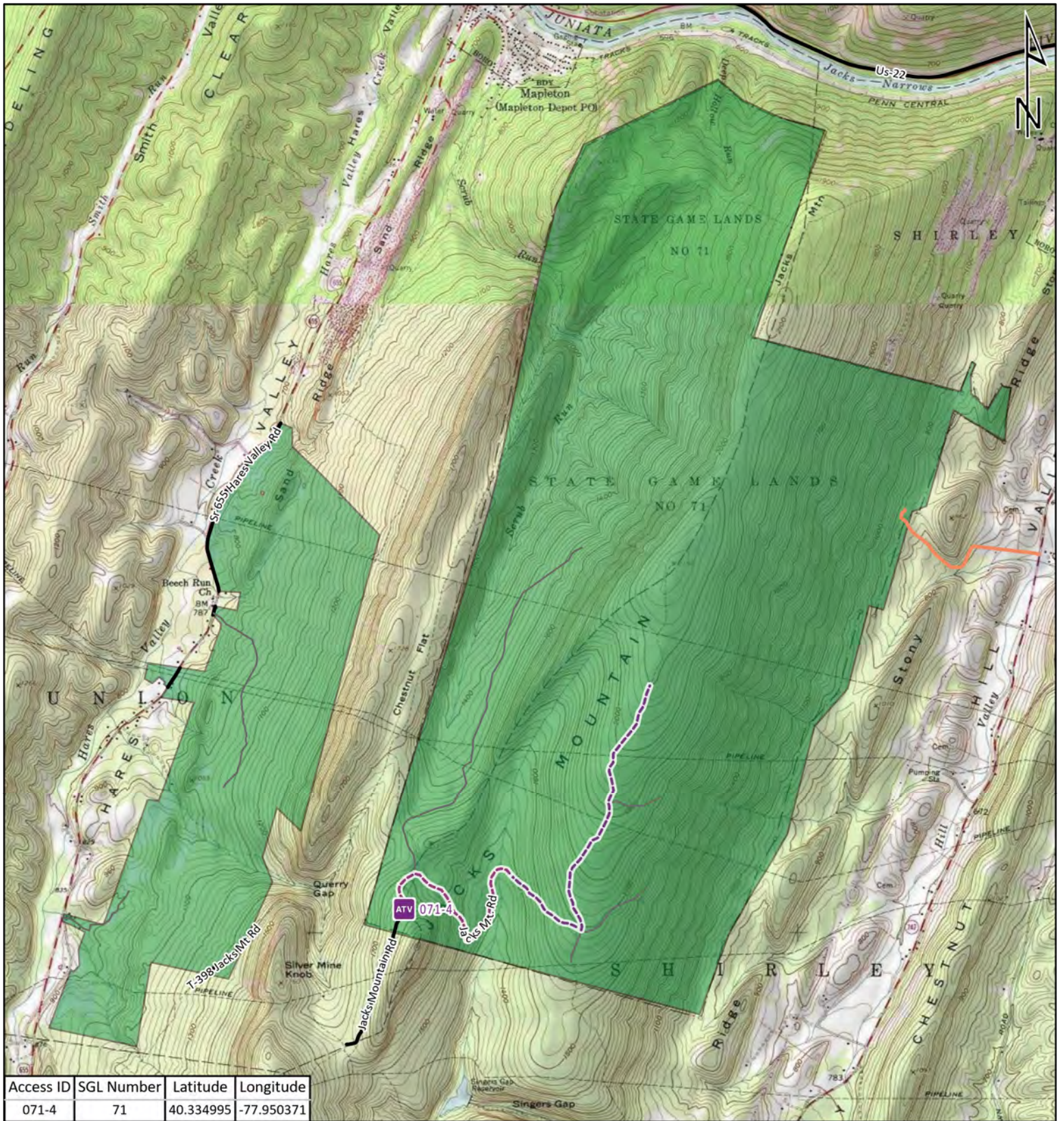
-  ATV Access Trail Start
-  State Game Land Boundary
- Game Land Roads**
-  Roads Open to Vehicle Traffic
-  Roads Seasonally Open to Vehicle Traffic
-  Roads Closed to Vehicle Traffic
-  ATV Access with Permit









STATE GAME LAND 53



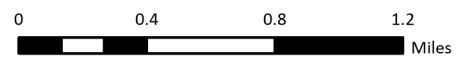
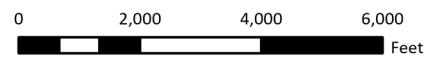
It is unlawful to ride ATV's on state game lands, except on designated roads open for persons issued a Disabled Person Permit, and who have a valid registration from the Department of Conservation & Natural Resources.



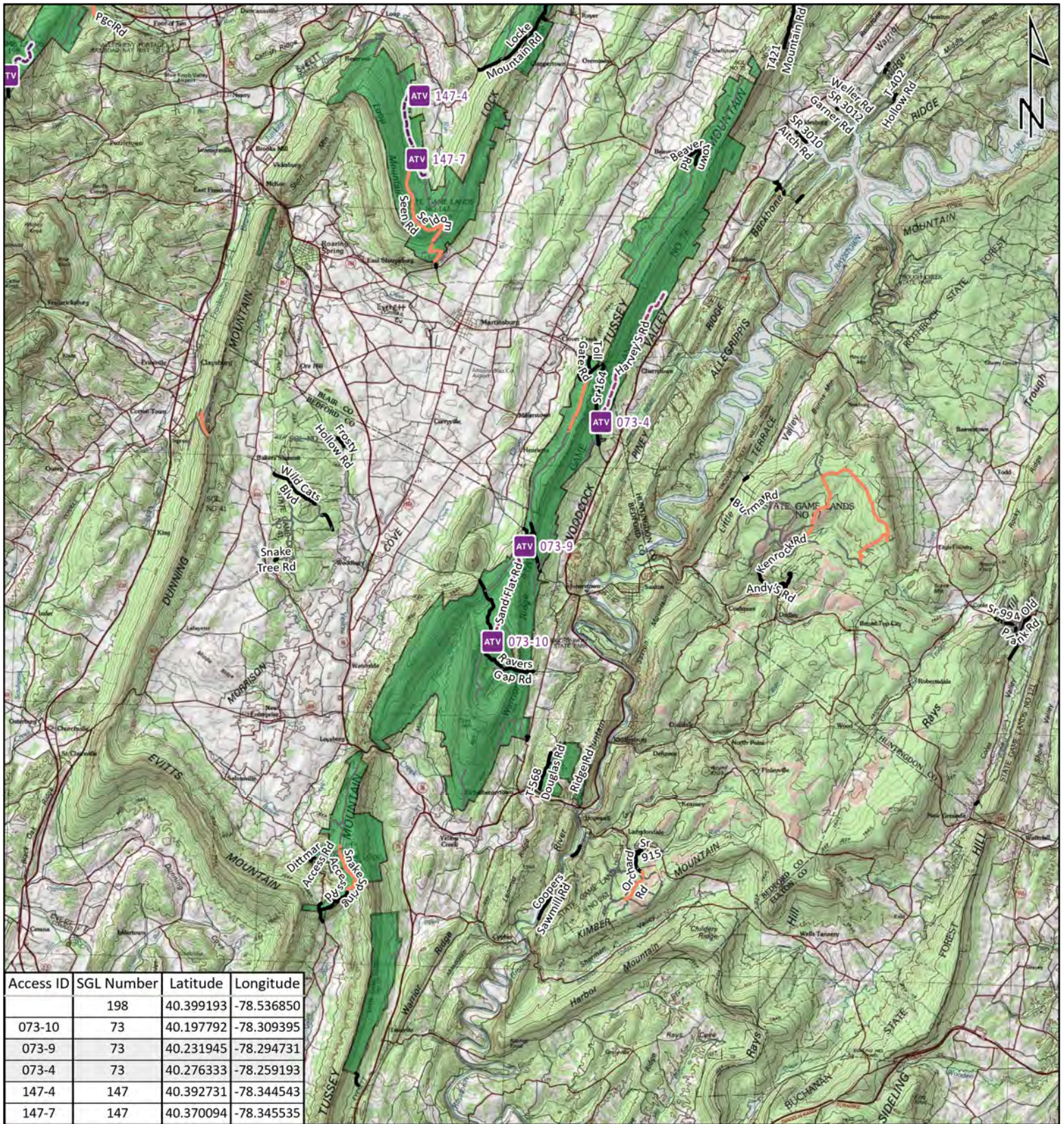
-  ATV Access Trail Start
-  State Game Land Boundary
- Game Land Roads
-  Roads Open to Vehicle Traffic
-  Roads Seasonally Open to Vehicle Traffic
-  Roads Closed to Vehicle Traffic
-  ATV Access with Permit










STATE GAME LAND 71



It is unlawful to ride ATV's on state game lands, except on designated roads open for persons issued a Disabled Person Permit, and who have a valid registration from the Department of Conservation & Natural Resources.

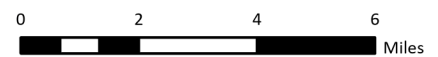
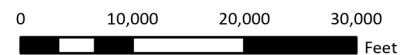


Access ID	SGL Number	Latitude	Longitude
	198	40.399193	-78.536850
073-10	73	40.197792	-78.309395
073-9	73	40.231945	-78.294731
073-4	73	40.276333	-78.259193
147-4	147	40.392731	-78.344543
147-7	147	40.370094	-78.345535

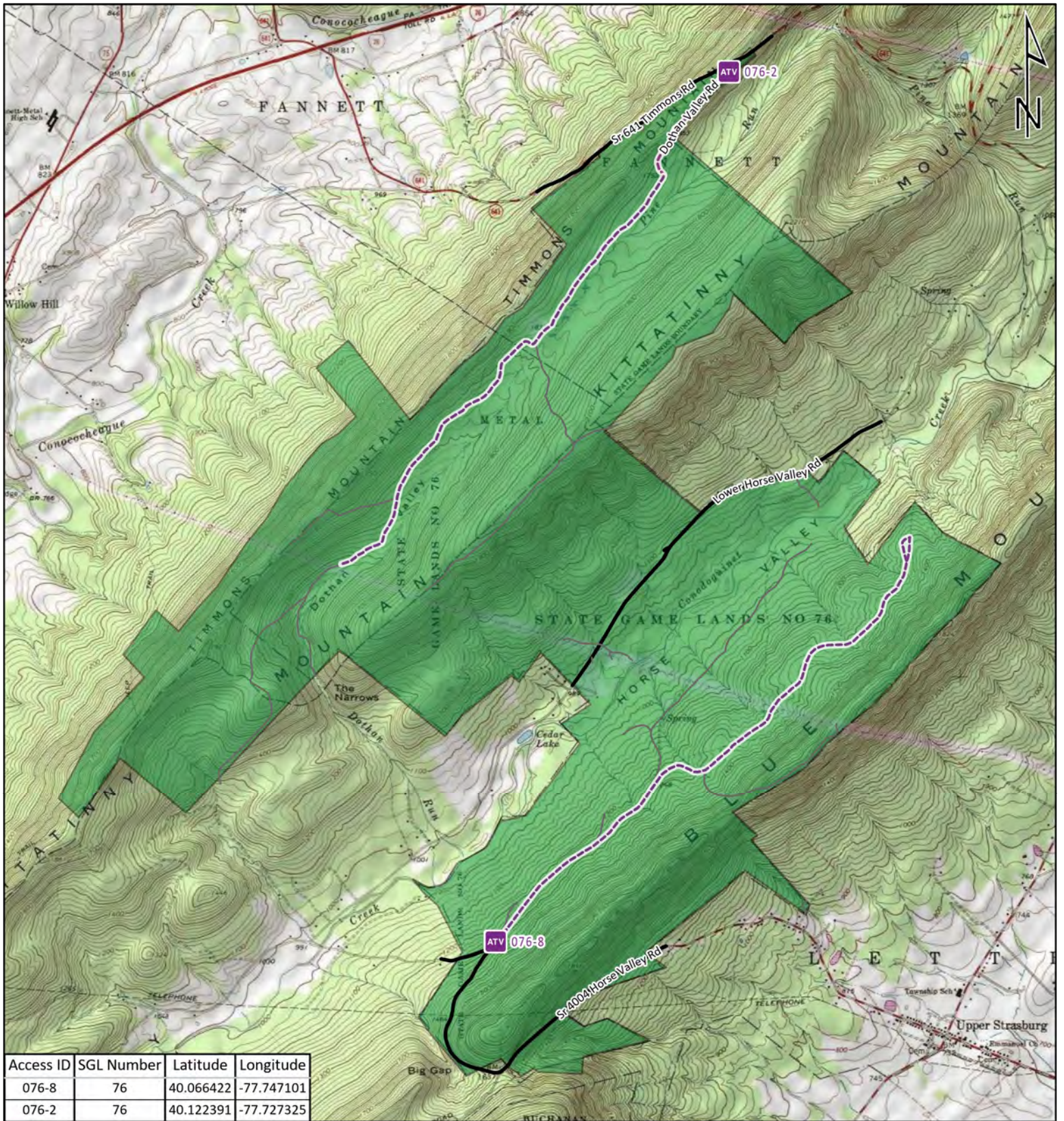
-  ATV Access Trail Start
-  State Game Land Boundary
-  Game Land Roads
-  Roads Open to Vehicle Traffic
-  Roads Seasonally Open to Vehicle Traffic
-  Roads Closed to Vehicle Traffic
-  ATV Access with Permit


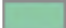






STATE GAME LAND 73



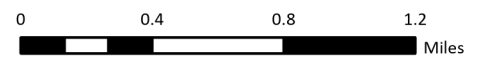
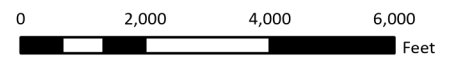
It is unlawful to ride ATV's on state game lands, except on designated roads open for persons issued a Disabled Person Permit, and who have a valid registration from the Department of Conservation & Natural Resources.



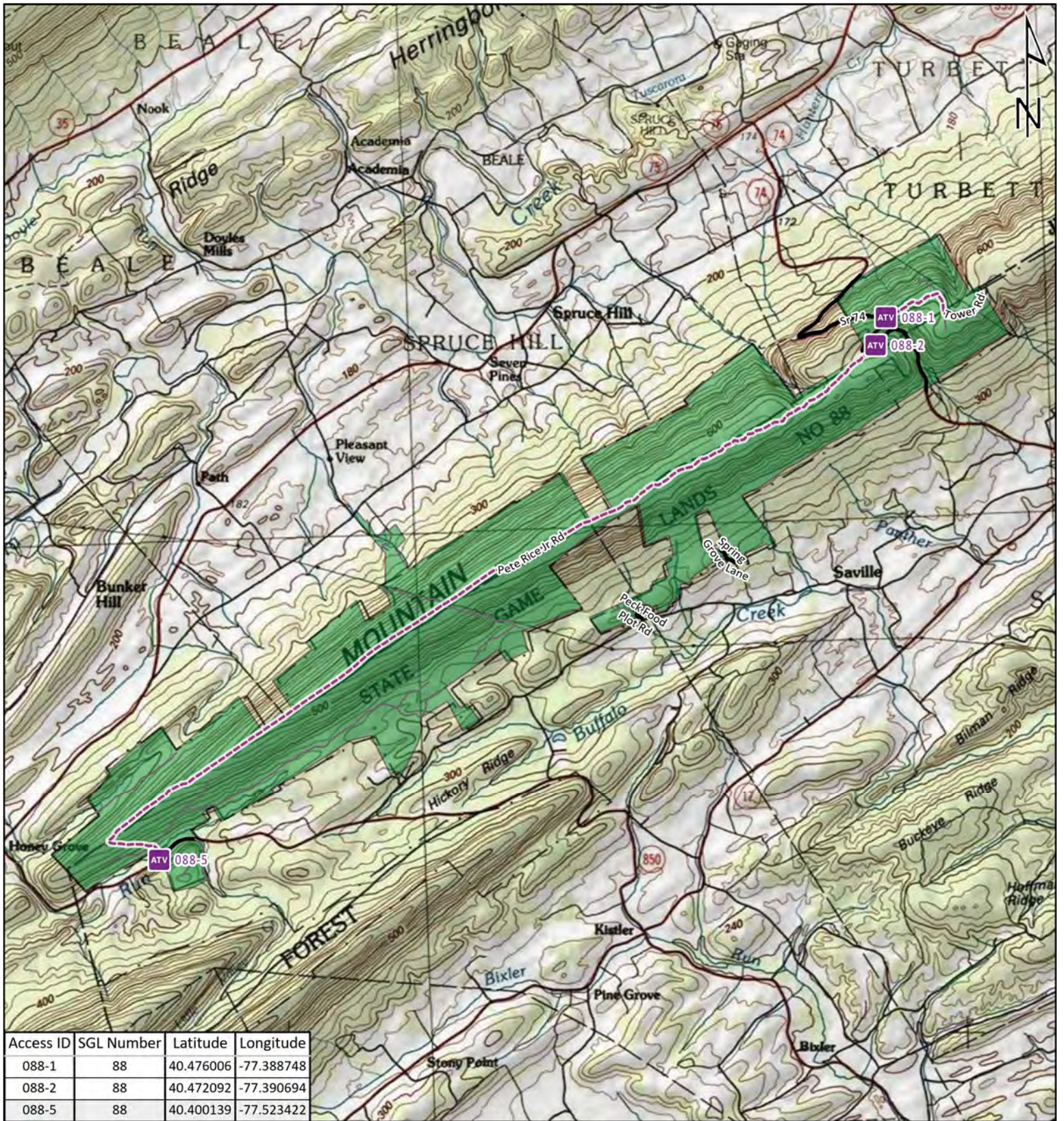
-  ATV Access Trail Start
-  State Game Land Boundary
- Game Land Roads
-  Roads Open to Vehicle Traffic
-  Roads Seasonally Open to Vehicle Traffic
-  Roads Closed to Vehicle Traffic
-  ATV Access with Permit



STATE GAME LAND 76



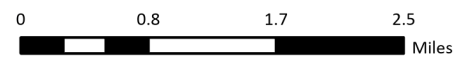
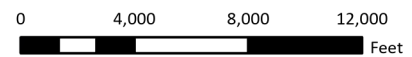
It is unlawful to ride ATV's on state game lands, except on designated roads open for persons issued a Disabled Person Permit, and who have a valid registration from the Department of Conservation & Natural Resources.



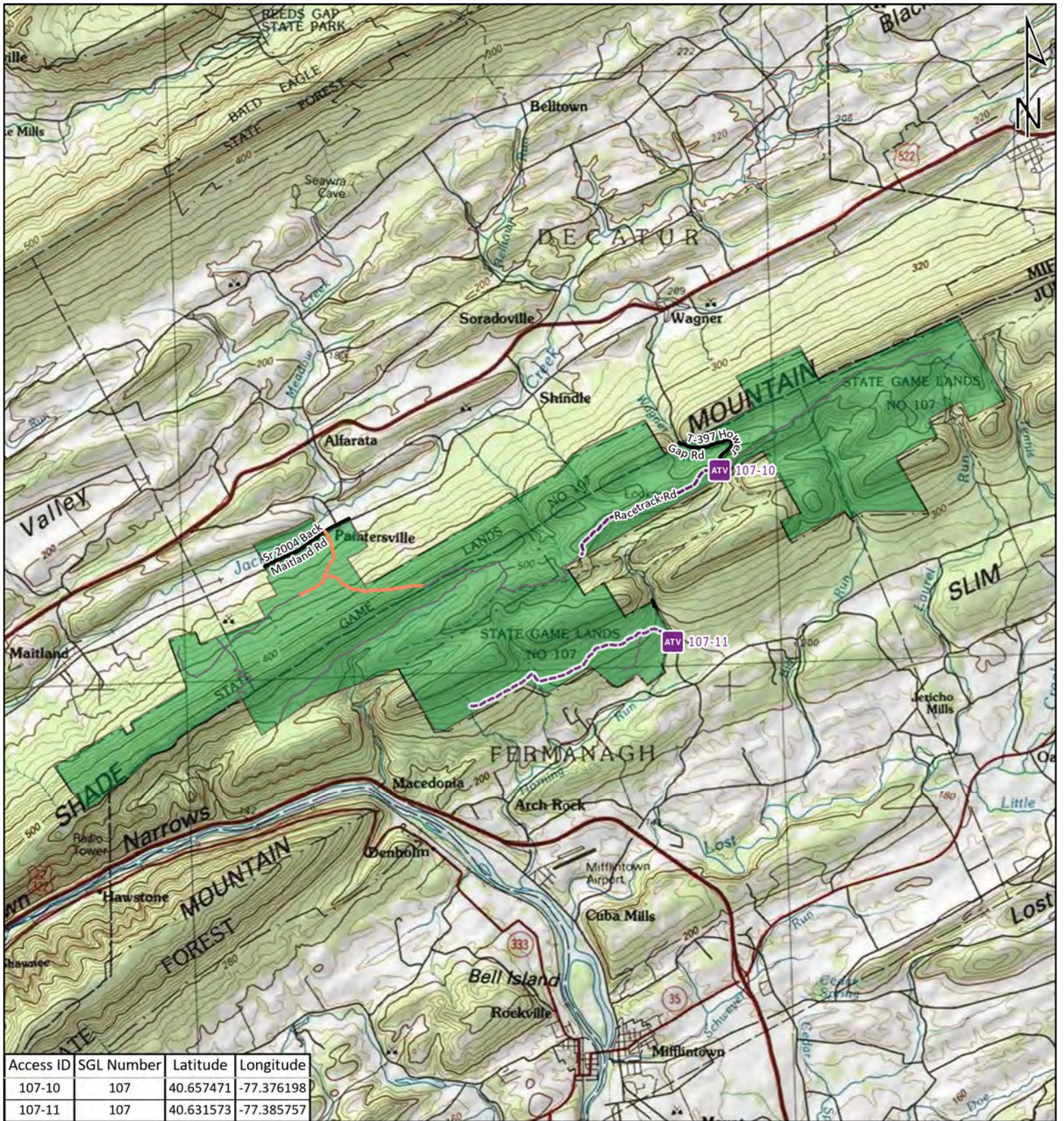
- ATV Access Trail Start
- State Game Land Boundary
- Game Land Roads
- Roads Open to Vehicle Traffic
- Roads Seasonally Open to Vehicle Traffic
- Roads Closed to Vehicle Traffic
- ATV Access with Permit










STATE GAME LAND 88



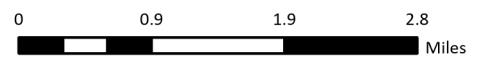
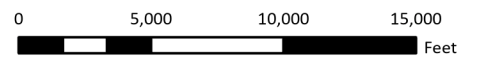
It is unlawful to ride ATV's on state game lands, except on designated roads open for persons issued a Disabled Person Permit, and who have a valid registration from the Department of Conservation & Natural Resources.



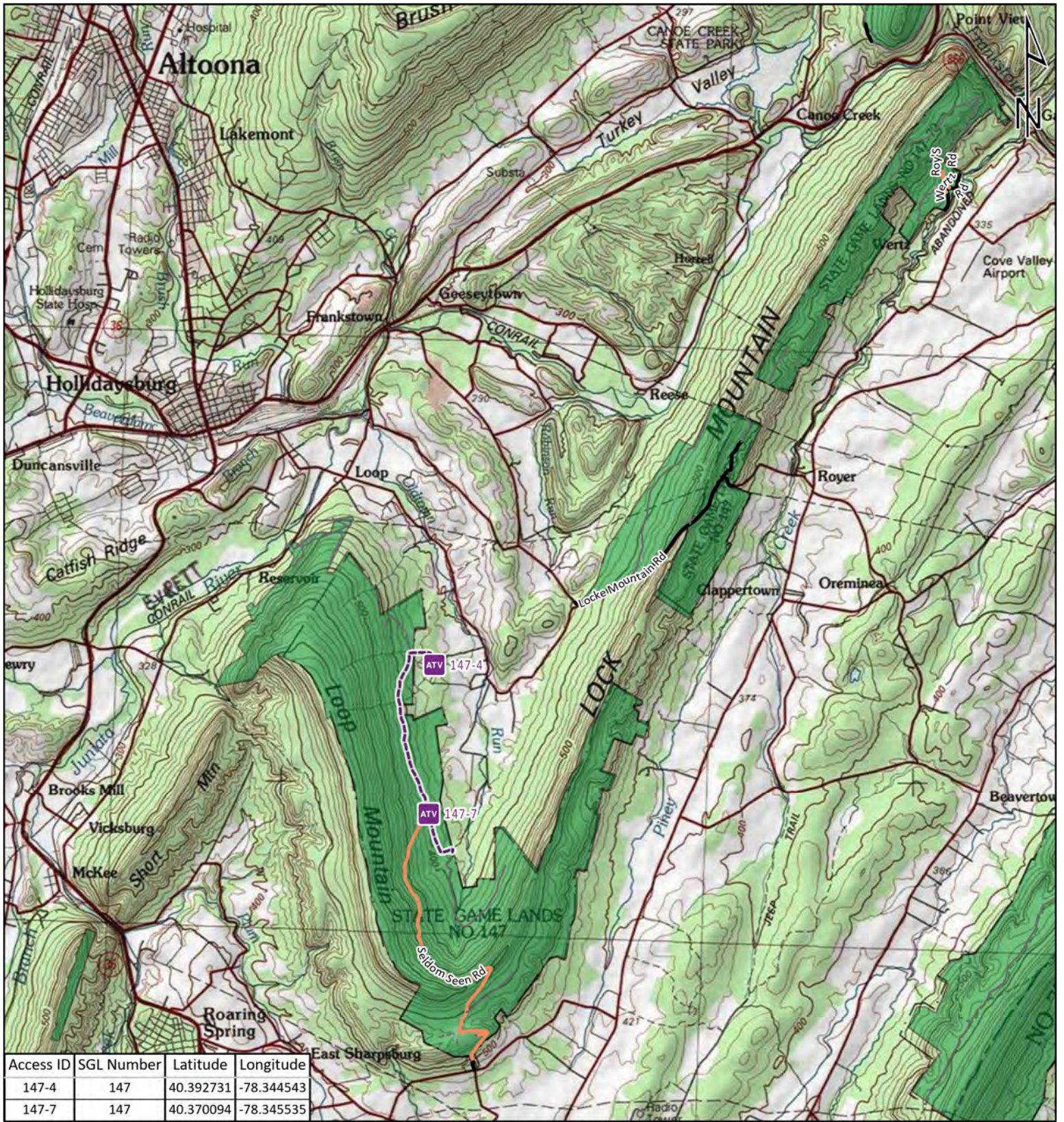
-  ATV Access Trail Start
-  State Game Land Boundary
-  Game Land Roads
-  Roads Open to Vehicle Traffic
-  Roads Seasonally Open to Vehicle Traffic
-  Roads Closed to Vehicle Traffic
-  ATV Access with Permit



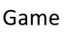






STATE GAME LAND 107



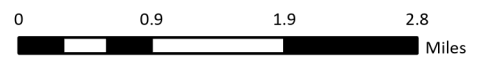
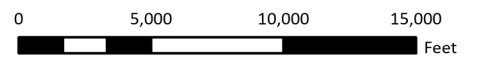
It is unlawful to ride ATV's on state game lands, except on designated roads open for persons issued a Disabled Person Permit, and who have a valid registration from the Department of Conservation & Natural Resources.



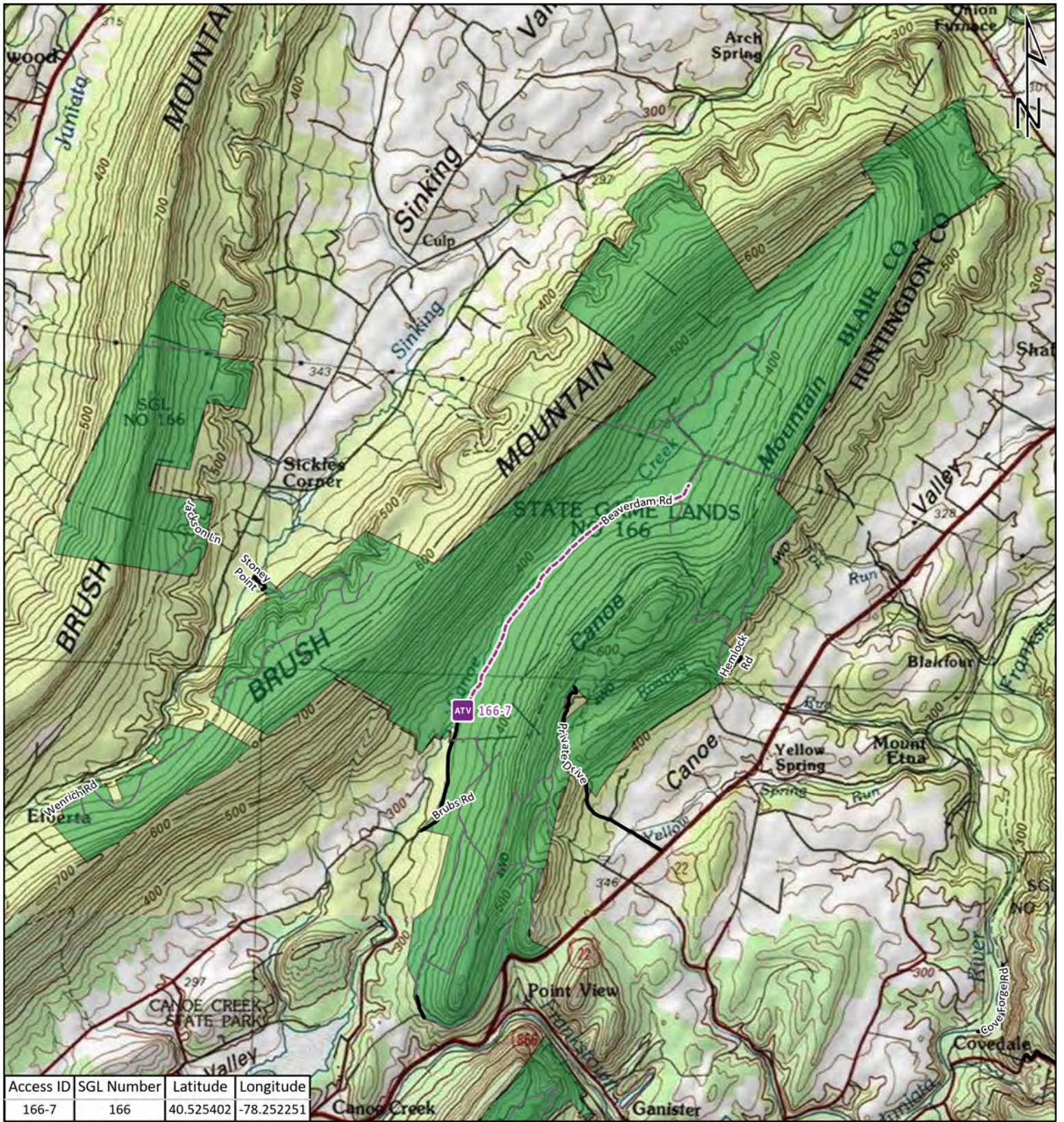
-  ATV Access Trail Start
-  State Game Land Boundary
-  Game Land Roads
-  Roads Open to Vehicle Traffic
-  Roads Seasonally Open to Vehicle Traffic
-  Roads Closed to Vehicle Traffic
-  ATV Access with Permit




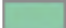




STATE GAME LAND 147



It is unlawful to ride ATV's on state game lands, except on designated roads open for persons issued a Disabled Person Permit, and who have a valid registration from the Department of Conservation & Natural Resources.



Access ID	SGL Number	Latitude	Longitude
166-7	166	40.525402	-78.252251

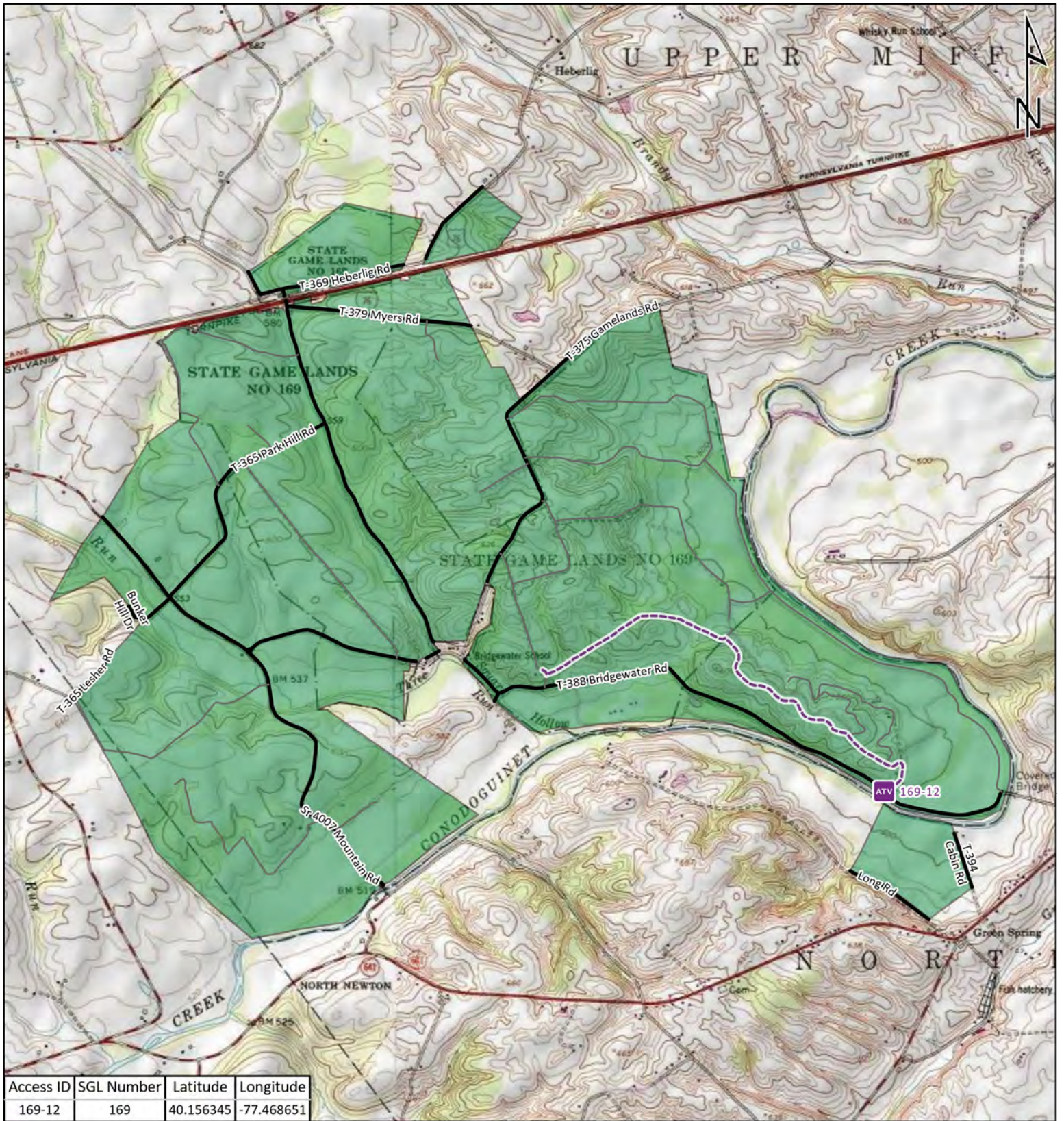
-  ATV Access Trail Start
-  State Game Land Boundary
- Game Land Roads
-  Roads Open to Vehicle Traffic
-  Roads Seasonally Open to Vehicle Traffic
-  Roads Closed to Vehicle Traffic
-  ATV Access with Permit









STATE GAME LAND 166



It is unlawful to ride ATV's on state game lands, except on designated roads open for persons issued a Disabled Person Permit, and who have a valid registration from the Department of Conservation & Natural Resources.

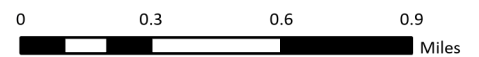
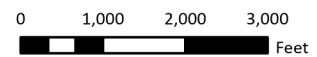


Access ID	SGL Number	Latitude	Longitude
169-12	169	40.156345	-77.468651

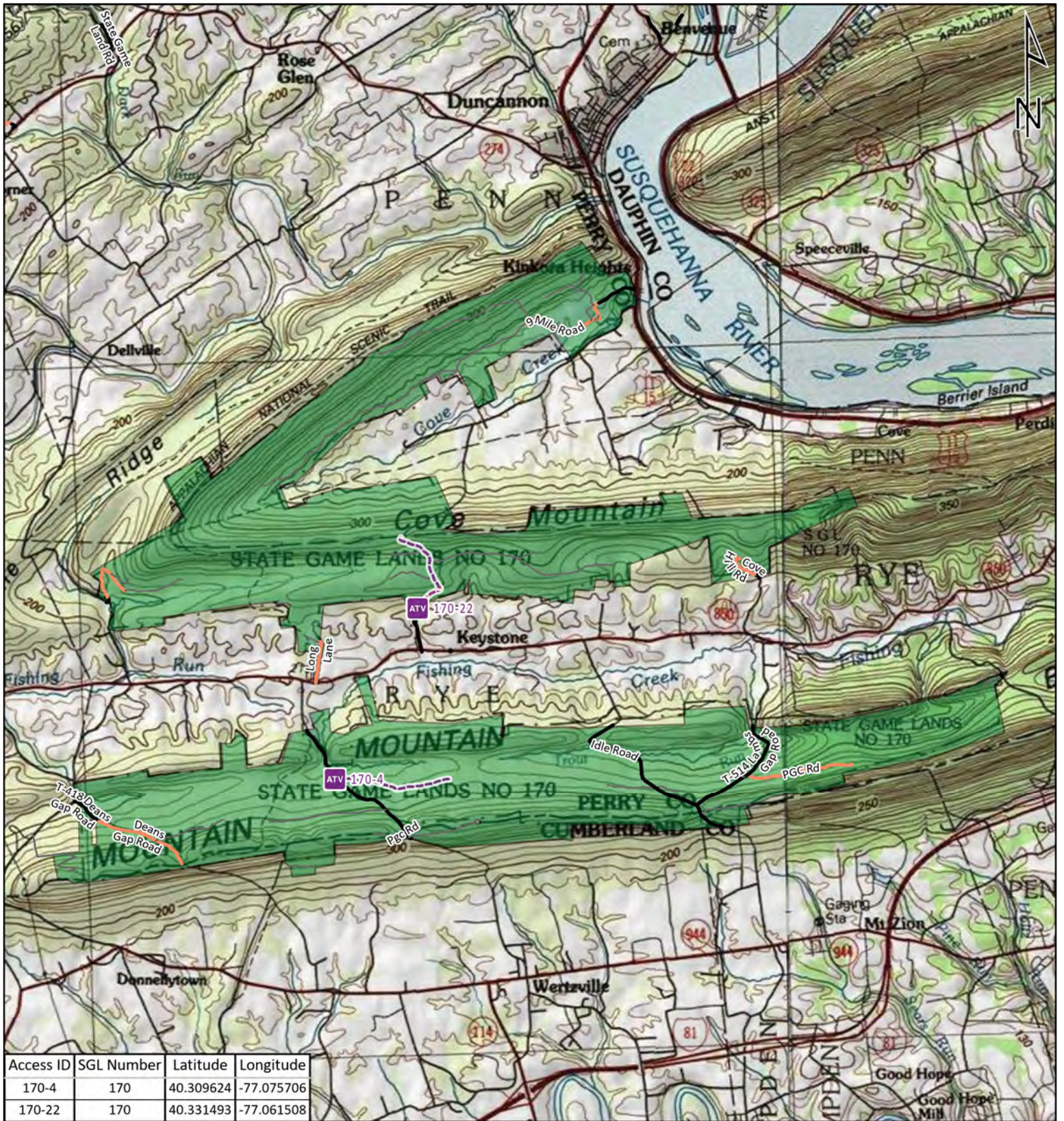
-  ATV Access Trail Start
-  State Game Land Boundary
- Game Land Roads
-  Roads Open to Vehicle Traffic
-  Roads Seasonally Open to Vehicle Traffic
-  Roads Closed to Vehicle Traffic
-  ATV Access with Permit










STATE GAME LAND 169



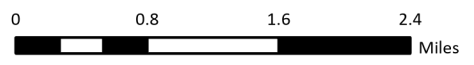
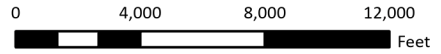
It is unlawful to ride ATV's on state game lands, except on designated roads open for persons issued a Disabled Person Permit, and who have a valid registration from the Department of Conservation & Natural Resources.



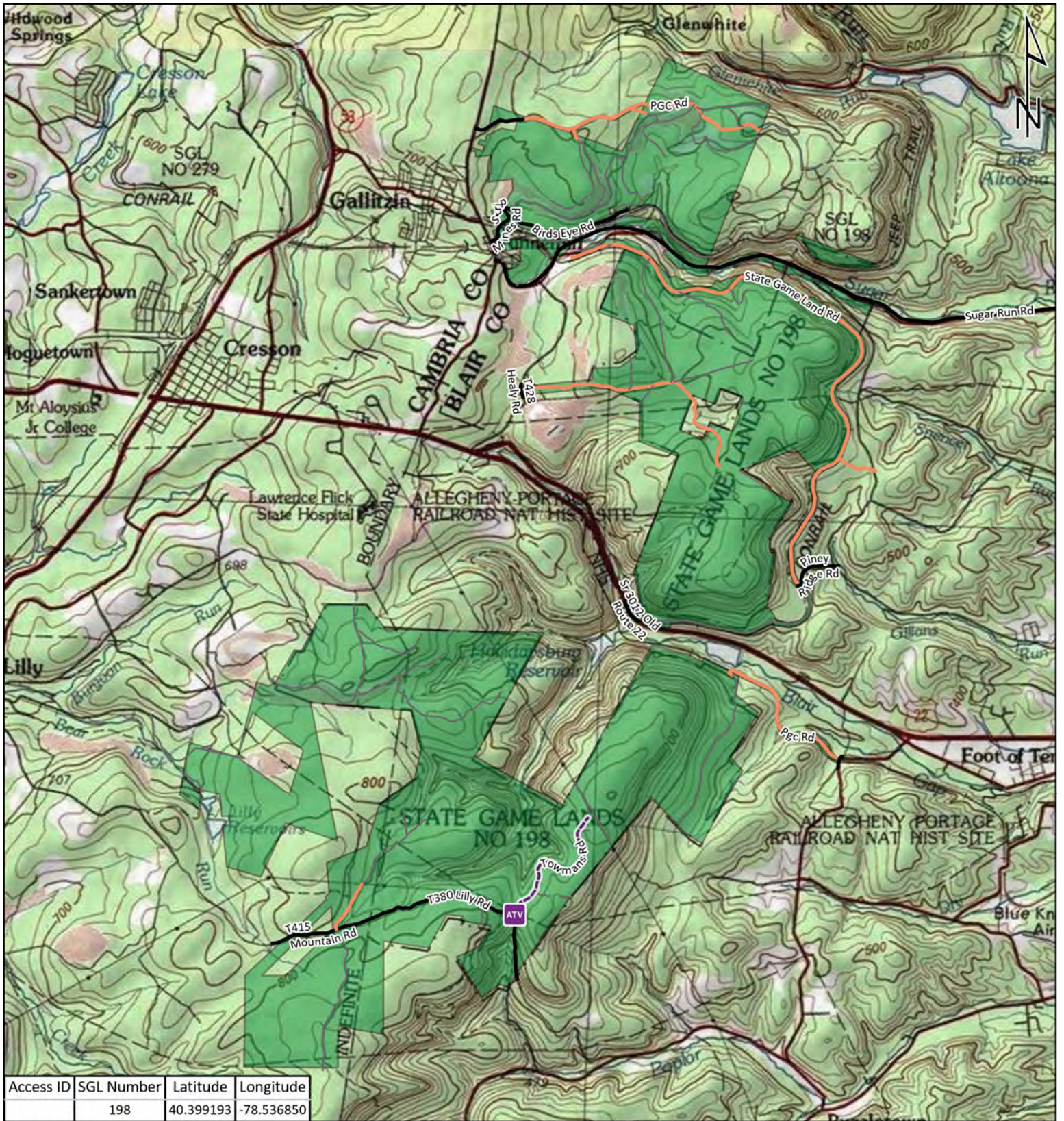
-  ATV Access Trail Start
-  State Game Land Boundary
-  Game Land Roads
-  Roads Open to Vehicle Traffic
-  Roads Seasonally Open to Vehicle Traffic
-  Roads Closed to Vehicle Traffic
-  ATV Access with Permit


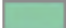






STATE GAME LAND 170



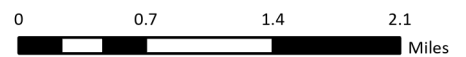
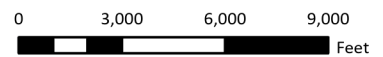
It is unlawful to ride ATV's on state game lands, except on designated roads open for persons issued a Disabled Person Permit, and who have a valid registration from the Department of Conservation & Natural Resources.



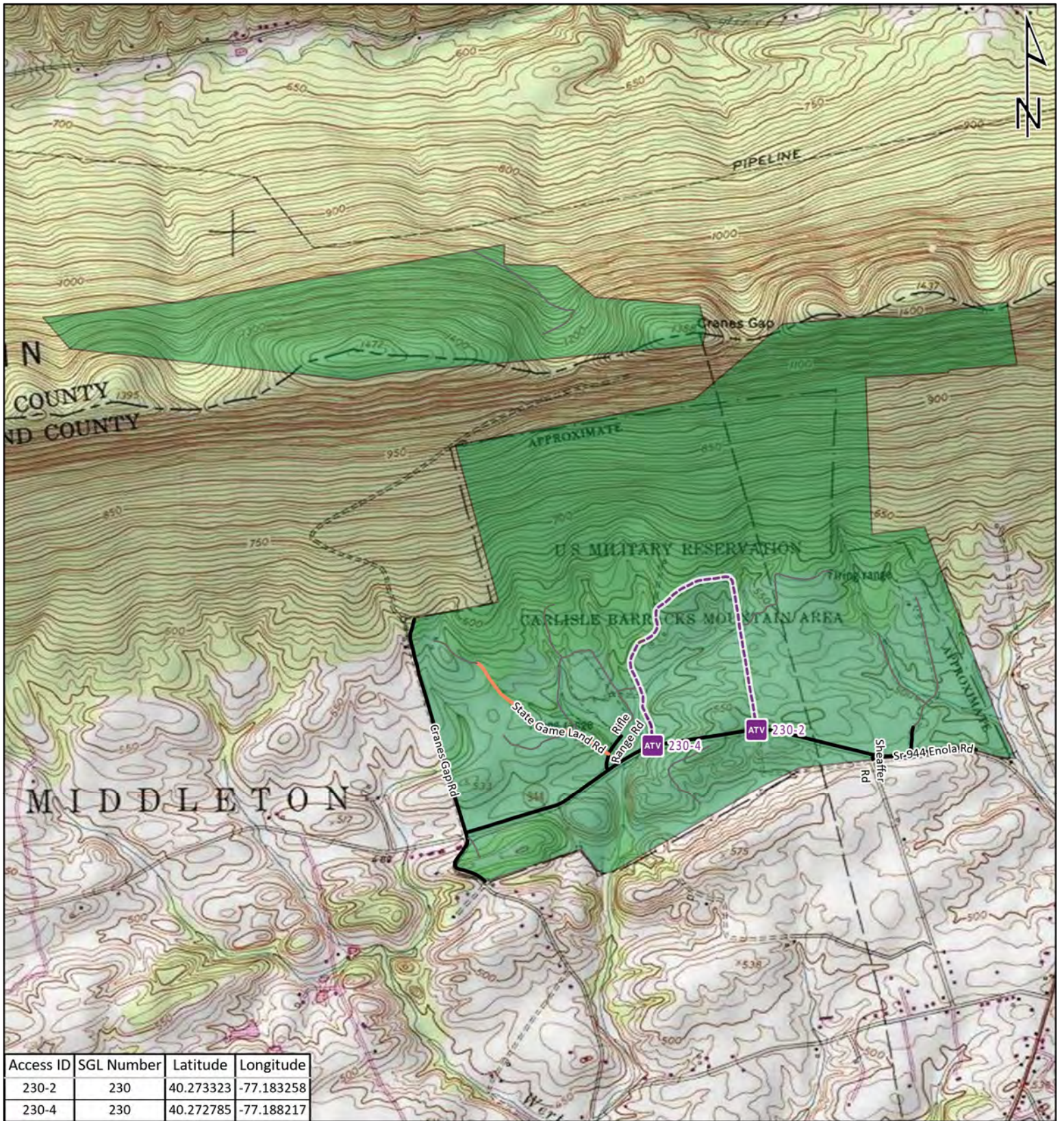
-  ATV Access Trail Start
-  State Game Land Boundary
- Game Land Roads
-  Roads Open to Vehicle Traffic
-  Roads Seasonally Open to Vehicle Traffic
-  Roads Closed to Vehicle Traffic
-  ATV Access with Permit










STATE GAME LAND 198



It is unlawful to ride ATV's on state game lands, except on designated roads open for persons issued a Disabled Person Permit, and who have a valid registration from the Department of Conservation & Natural Resources.

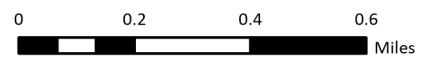
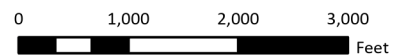


Access ID	SGL Number	Latitude	Longitude
230-2	230	40.273323	-77.183258
230-4	230	40.272785	-77.188217

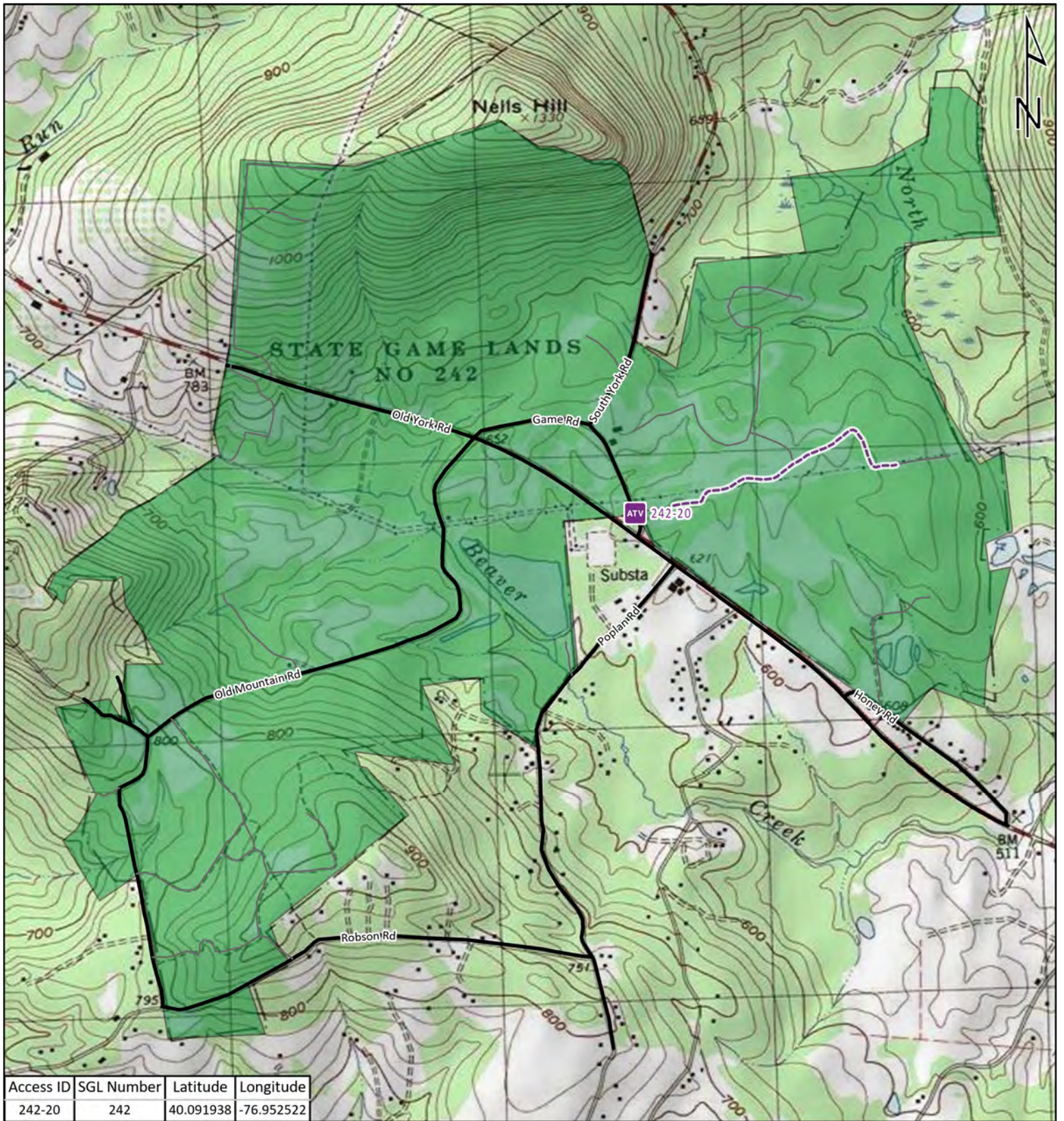
-  ATV Access Trail Start
-  State Game Land Boundary
-  Game Land Roads
-  Roads Open to Vehicle Traffic
-  Roads Seasonally Open to Vehicle Traffic
-  Roads Closed to Vehicle Traffic
-  ATV Access with Permit




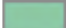




STATE GAME LAND 230



It is unlawful to ride ATV's on state game lands, except on designated roads open for persons issued a Disabled Person Permit, and who have a valid registration from the Department of Conservation & Natural Resources.

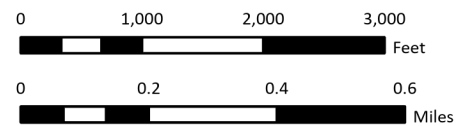


Access ID	SGL Number	Latitude	Longitude
242-20	242	40.091938	-76.952522

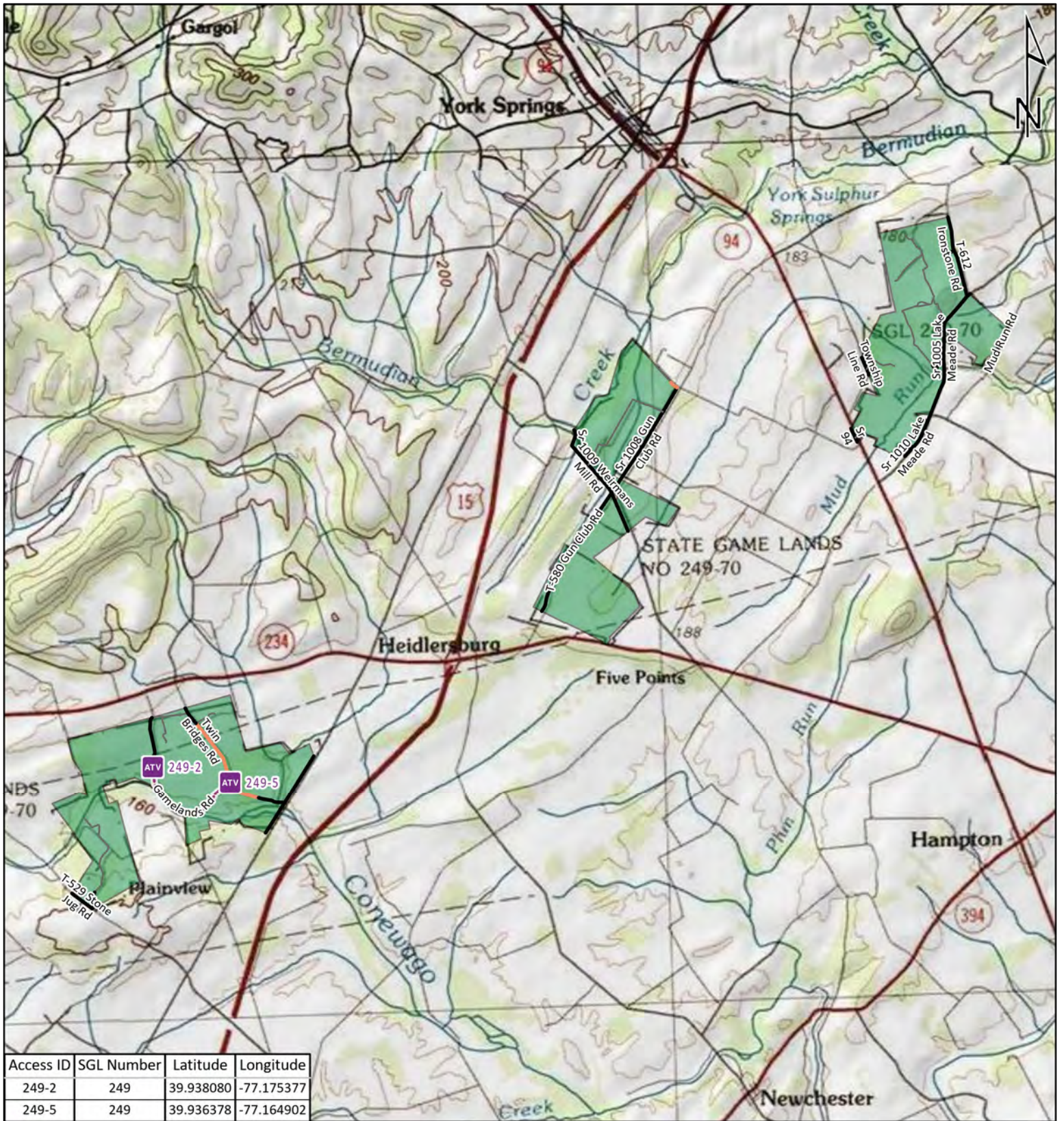
-  ATV Access Trail Start
-  State Game Land Boundary
- Game Land Roads
-  Roads Open to Vehicle Traffic
-  Roads Seasonally Open to Vehicle Traffic
-  Roads Closed to Vehicle Traffic
-  ATV Access with Permit





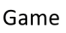




STATE GAME LAND 242



It is unlawful to ride ATV's on state game lands, except on designated roads open for persons issued a Disabled Person Permit, and who have a valid registration from the Department of Conservation & Natural Resources.

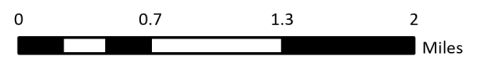
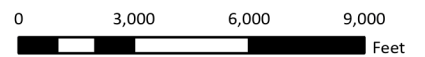


Access ID	SGL Number	Latitude	Longitude
249-2	249	39.938080	-77.175377
249-5	249	39.936378	-77.164902

-  ATV Access Trail Start
-  State Game Land Boundary
-  Game Land Roads
-  Roads Open to Vehicle Traffic
-  Roads Seasonally Open to Vehicle Traffic
-  Roads Closed to Vehicle Traffic
-  ATV Access with Permit



STATE GAME LAND 249



It is unlawful to ride ATV's on state game lands, except on designated roads open for persons issued a Disabled Person Permit, and who have a valid registration from the Department of Conservation & Natural Resources.