



## Southwest Region

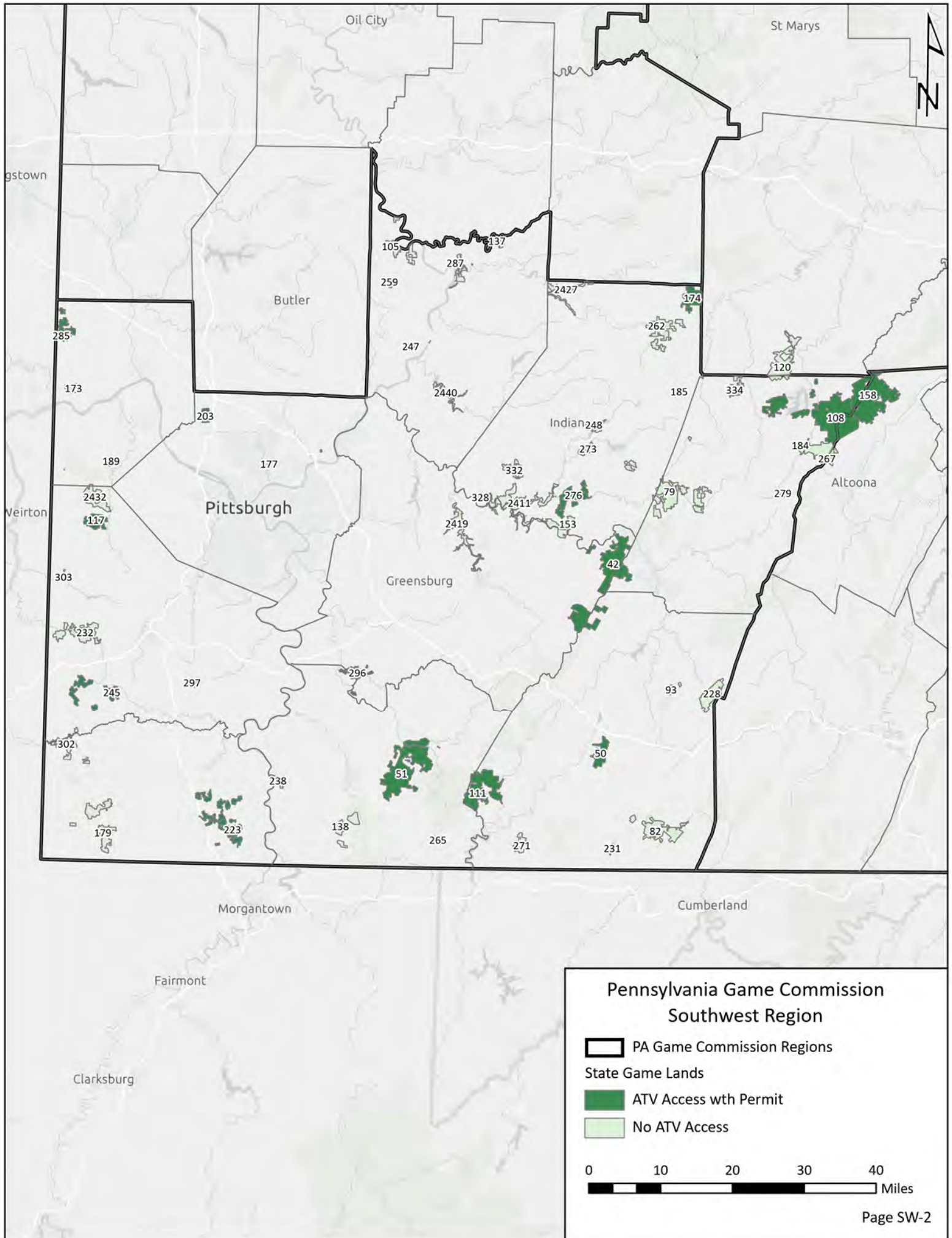


It is unlawful to ride ATVs on state game lands, except on designated roads open for persons issued a Disabled Persons Permit, and who have a valid registration from the Department of Conservation & Natural Resources.




# Table of Contents


<b>Southwest Region Overview Map</b>	.....	SW-2
<b>State Game Lands 42</b>	Cambria, Somerset, and Westmoreland counties.....	SW-3
<b>State Game Lands 50</b>	Somerset County.....	SW-4
<b>State Game Lands 51</b>	Fayette County.....	SW-5
<b>State Game Lands 108</b>	Blair and Cambria counties.....	SW-6
<b>State Game Lands 111</b>	Fayette and Somerset counties .....	SW-7
<b>State Game Lands 117</b>	Washington County .....	SW-8
<b>State Game Lands 158</b>	Blair and Cambria counties.....	SW-9
<b>State Game Lands 174</b>	Clearfield and Indiana counties .....	SW-10
<b>State Game Lands 203</b>	Allegheny County.....	SW-11
<b>State Game Lands 223</b>	Greene County.....	SW-12
<b>State Game Lands 245</b>	Washington County .....	SW-13
<b>State Game Lands 247</b>	Armstrong County.....	SW-14
<b>State Game Lands 276</b>	Indiana County.....	SW-15
<b>State Game Lands 285</b>	Beaver County.....	SW-16
<b>State Game Lands 296</b>	Fayette and Westmoreland counties .....	SW-17




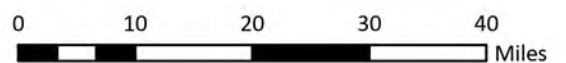
**Pennsylvania Game Commission  
Southwest Region**

 PA Game Commission Regions

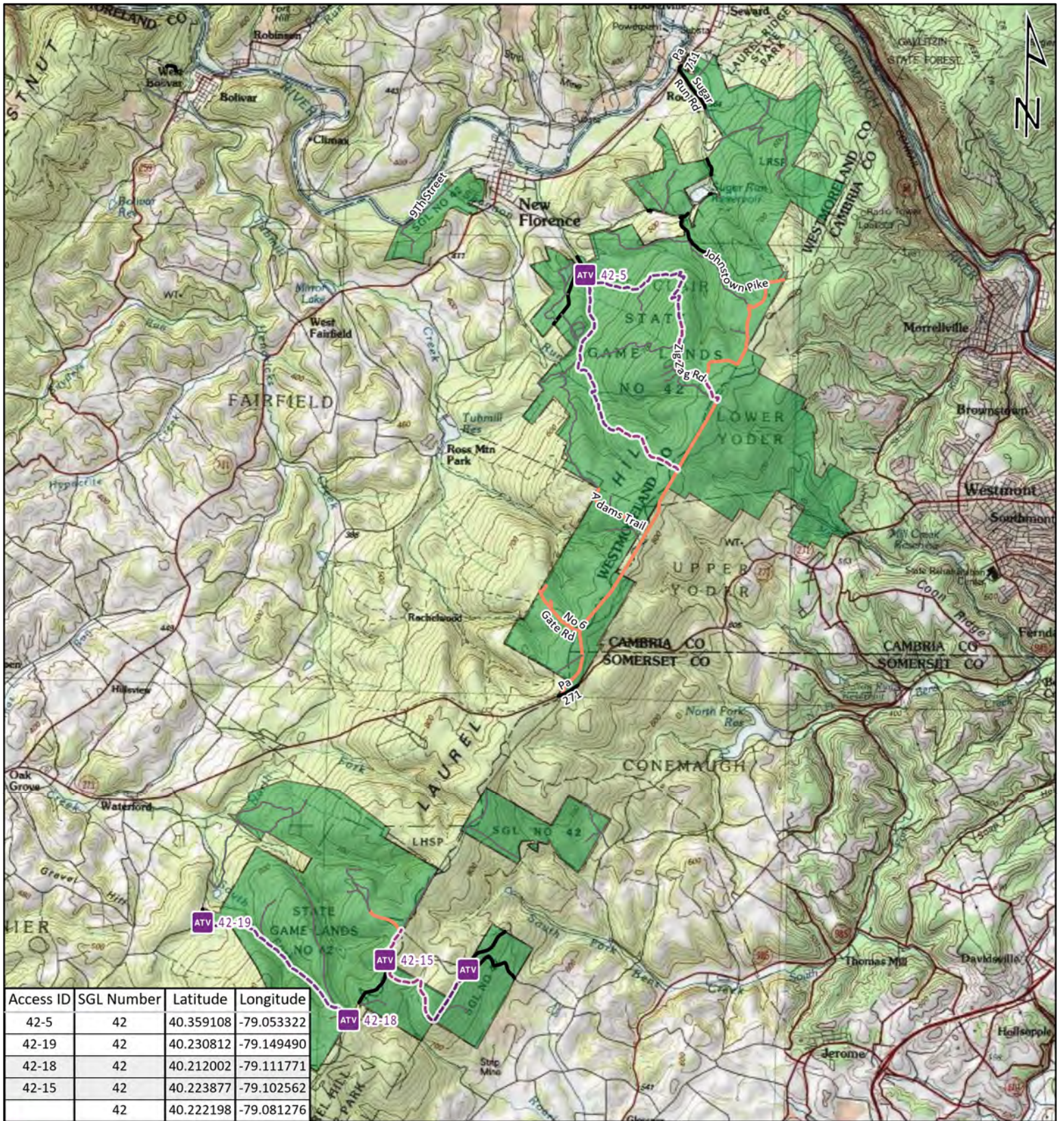
State Game Lands








 ATV Access with Permit

 No ATV Access



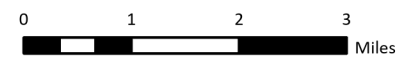
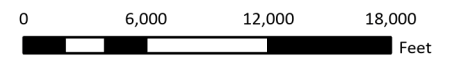




-  ATV Access Trail Start
-  State Game Land Boundary
-  Game Land Roads
-  Roads Open to Vehicle Traffic
-  Roads Seasonally Open to Vehicle Traffic
-  Roads Closed to Vehicle Traffic
-  ATV Access with Permit

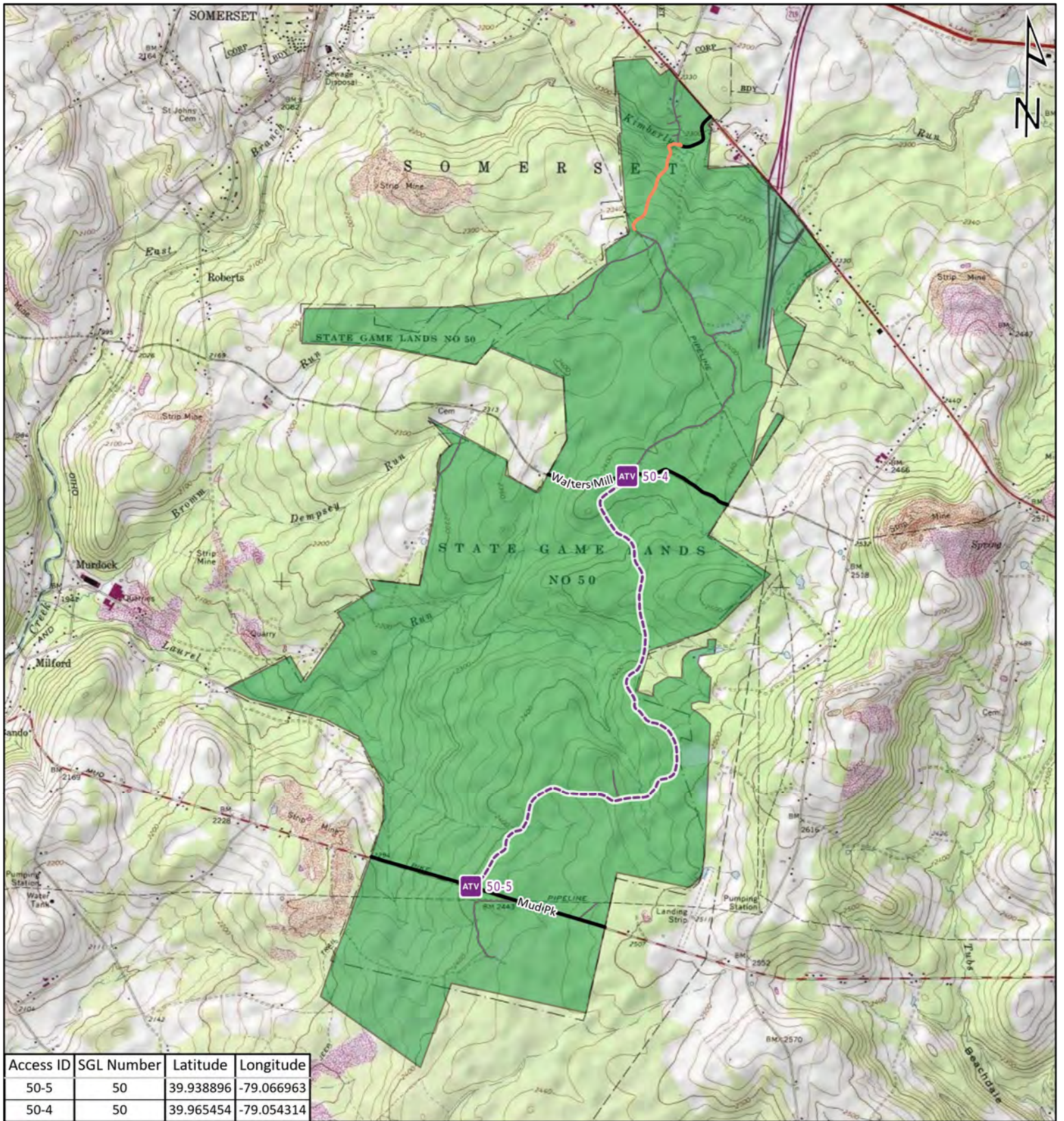


## STATE GAME LAND 42



It is unlawful to ride ATV's on state game lands, except on designated roads open for persons issued a Disabled Person Permit, and who have a valid registration from the Department of Conservation & Natural Resources.



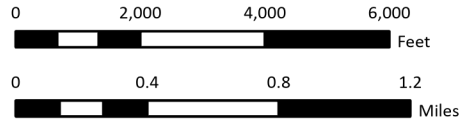


Access ID	SGL Number	Latitude	Longitude
50-5	50	39.938896	-79.066963
50-4	50	39.965454	-79.054314

- ATV Access Trail Start
- State Game Land Boundary
- Game Land Roads
- Roads Open to Vehicle Traffic
- Roads Seasonally Open to Vehicle Traffic
- Roads Closed to Vehicle Traffic
- ATV Access with Permit

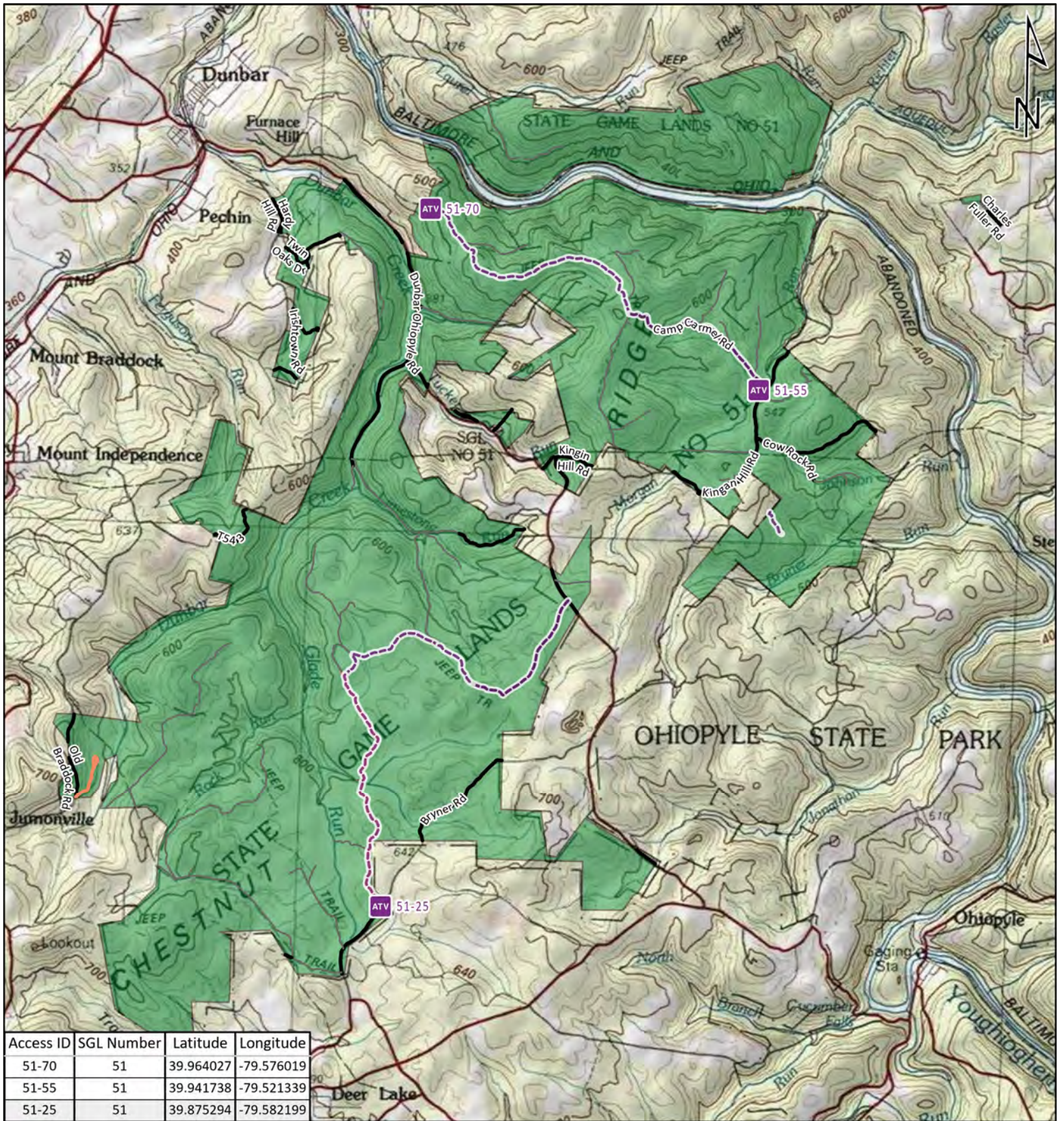


## STATE GAME LAND 50



It is unlawful to ride ATV's on state game lands, except on designated roads open for persons issued a Disabled Person Permit, and who have a valid registration from the Department of Conservation & Natural Resources.



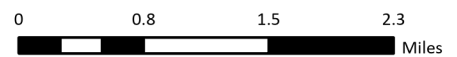
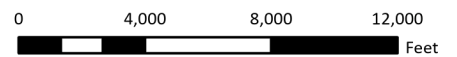


Access ID	SGL Number	Latitude	Longitude
51-70	51	39.964027	-79.576019
51-55	51	39.941738	-79.521339
51-25	51	39.875294	-79.582199

- ATV Access Trail Start
- State Game Land Boundary
- Game Land Roads
- Roads Open to Vehicle Traffic
- Roads Seasonally Open to Vehicle Traffic
- Roads Closed to Vehicle Traffic
- ATV Access with Permit

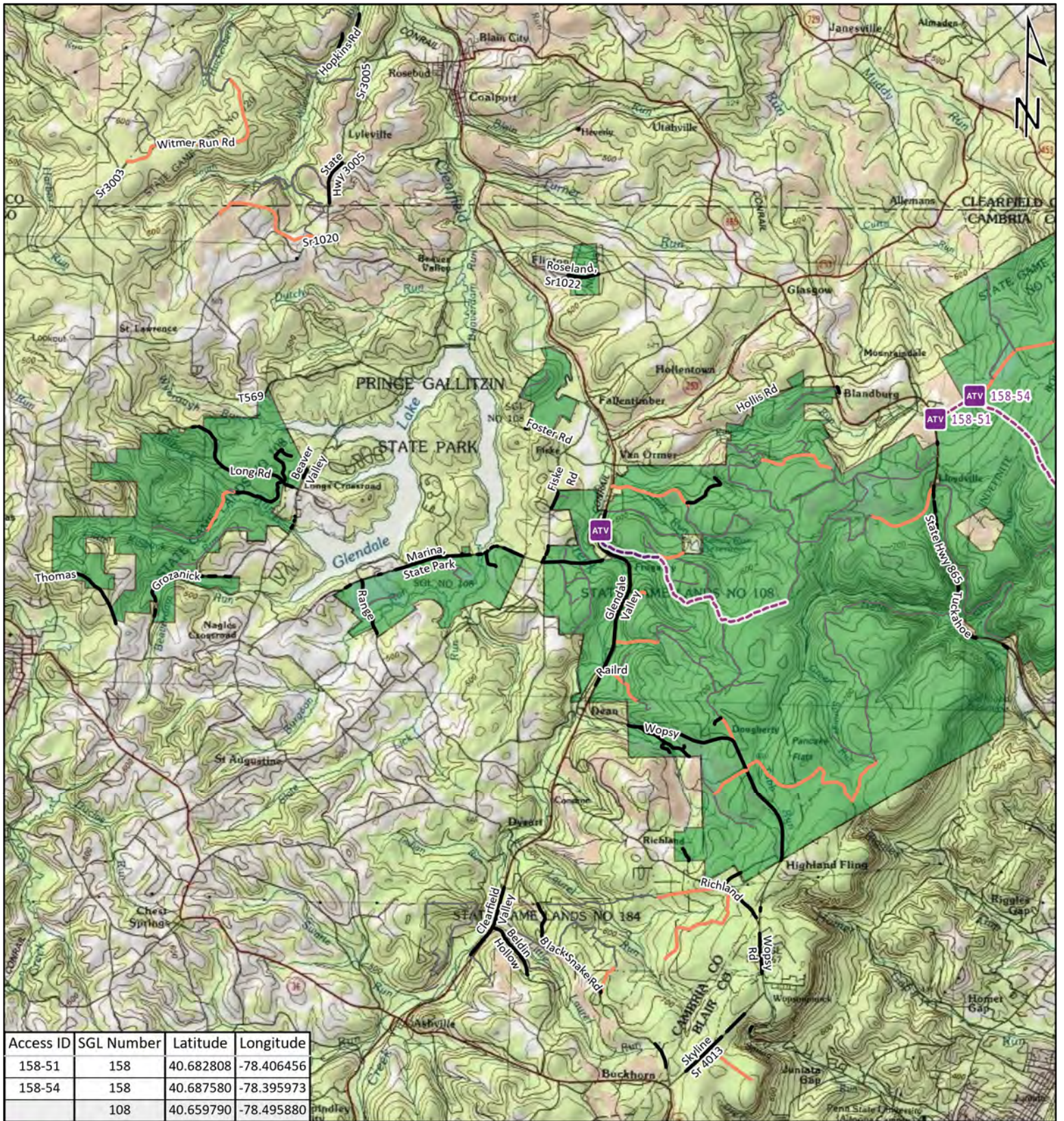


## STATE GAME LAND 51


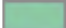







It is unlawful to ride ATV's on state game lands, except on designated roads open for persons issued a Disabled Person Permit, and who have a valid registration from the Department of Conservation & Natural Resources.



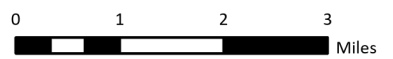
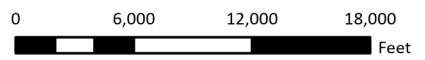


Access ID	SGL Number	Latitude	Longitude
158-51	158	40.682808	-78.406456
158-54	158	40.687580	-78.395973
	108	40.659790	-78.495880

-  ATV Access Trail Start
-  State Game Land Boundary
-  Game Land Roads
-  Roads Open to Vehicle Traffic
-  Roads Seasonally Open to Vehicle Traffic
-  Roads Closed to Vehicle Traffic
-  ATV Access with Permit

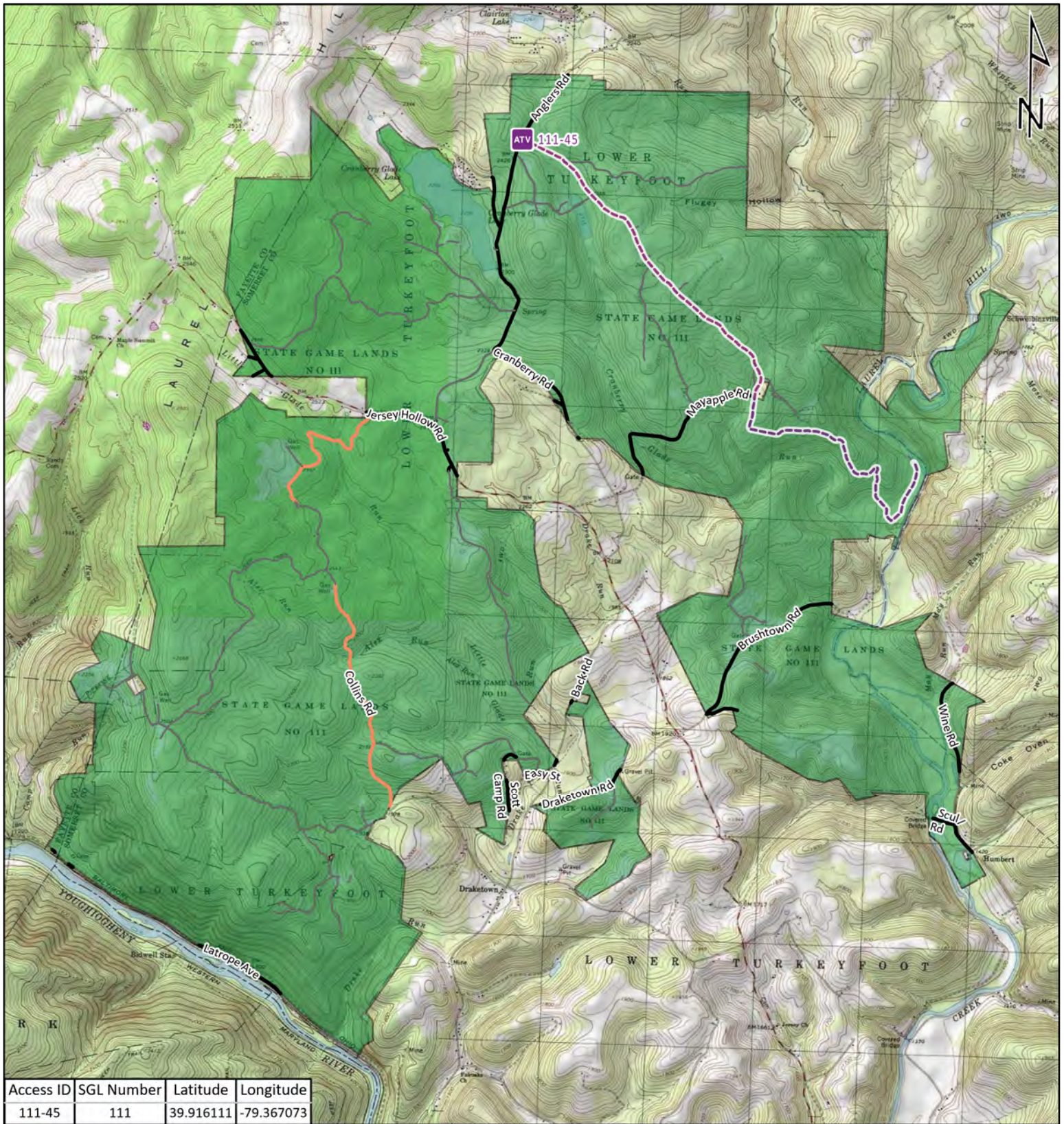


## STATE GAME LAND 108









It is unlawful to ride ATV's on state game lands, except on designated roads open for persons issued a Disabled Person Permit, and who have a valid registration from the Department of Conservation & Natural Resources.



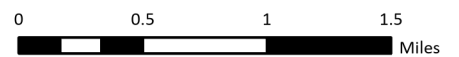
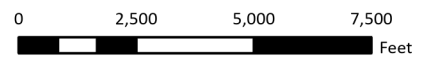


Access ID	SGL Number	Latitude	Longitude
111-45	111	39.916111	-79.367073

-  ATV Access Trail Start
-  State Game Land Boundary
- Game Land Roads**
-  Roads Open to Vehicle Traffic
-  Roads Seasonally Open to Vehicle Traffic
-  Roads Closed to Vehicle Traffic
-  ATV Access with Permit

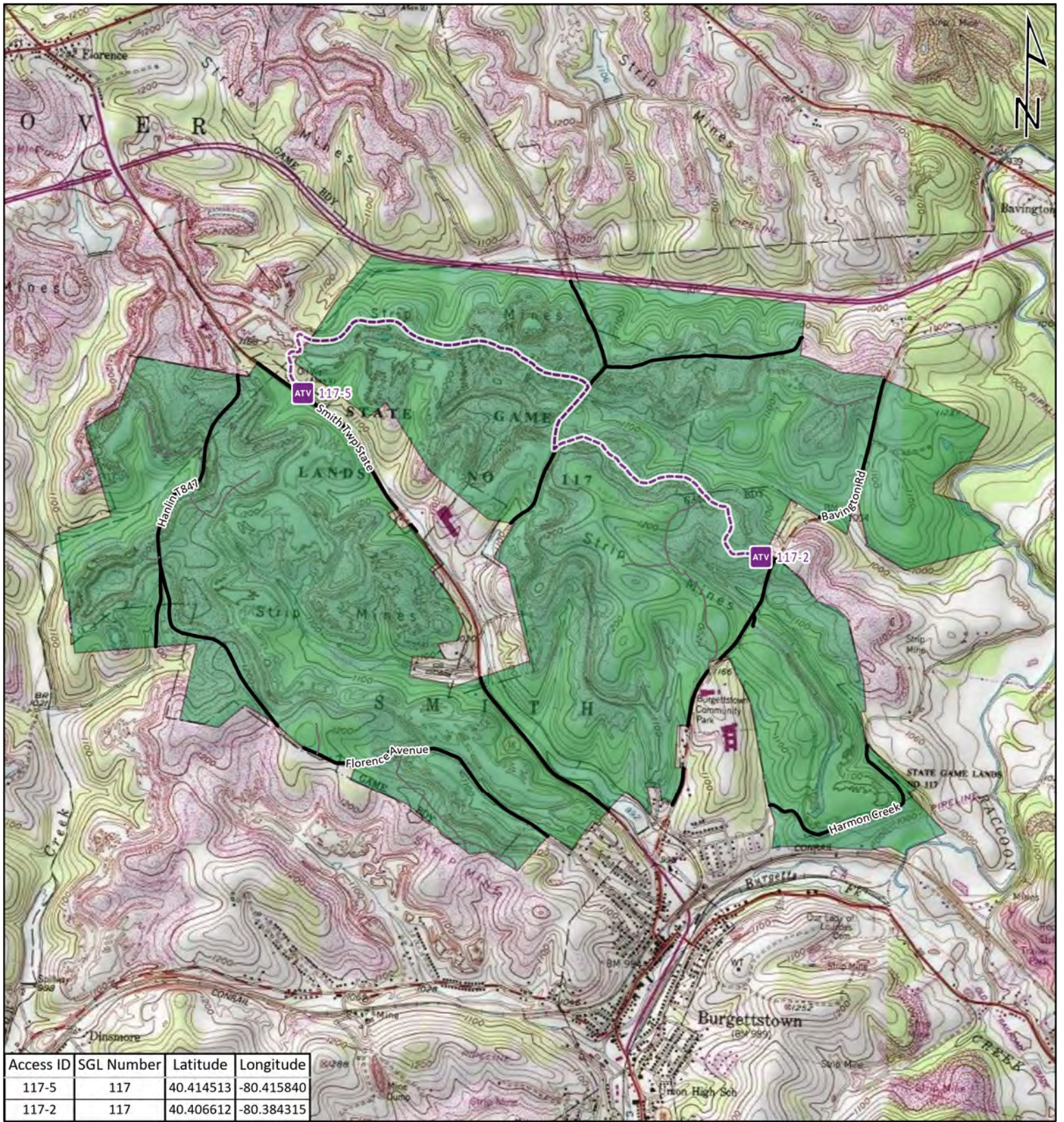









## STATE GAME LAND 111



It is unlawful to ride ATV's on state game lands, except on designated roads open for persons issued a Disabled Person Permit, and who have a valid registration from the Department of Conservation & Natural Resources.

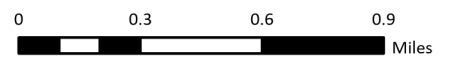
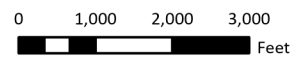




-  ATV Access Trail Start
-  State Game Land Boundary
-  Game Land Roads
-  Roads Open to Vehicle Traffic
-  Roads Seasonally Open to Vehicle Traffic
-  Roads Closed to Vehicle Traffic
-  ATV Access with Permit

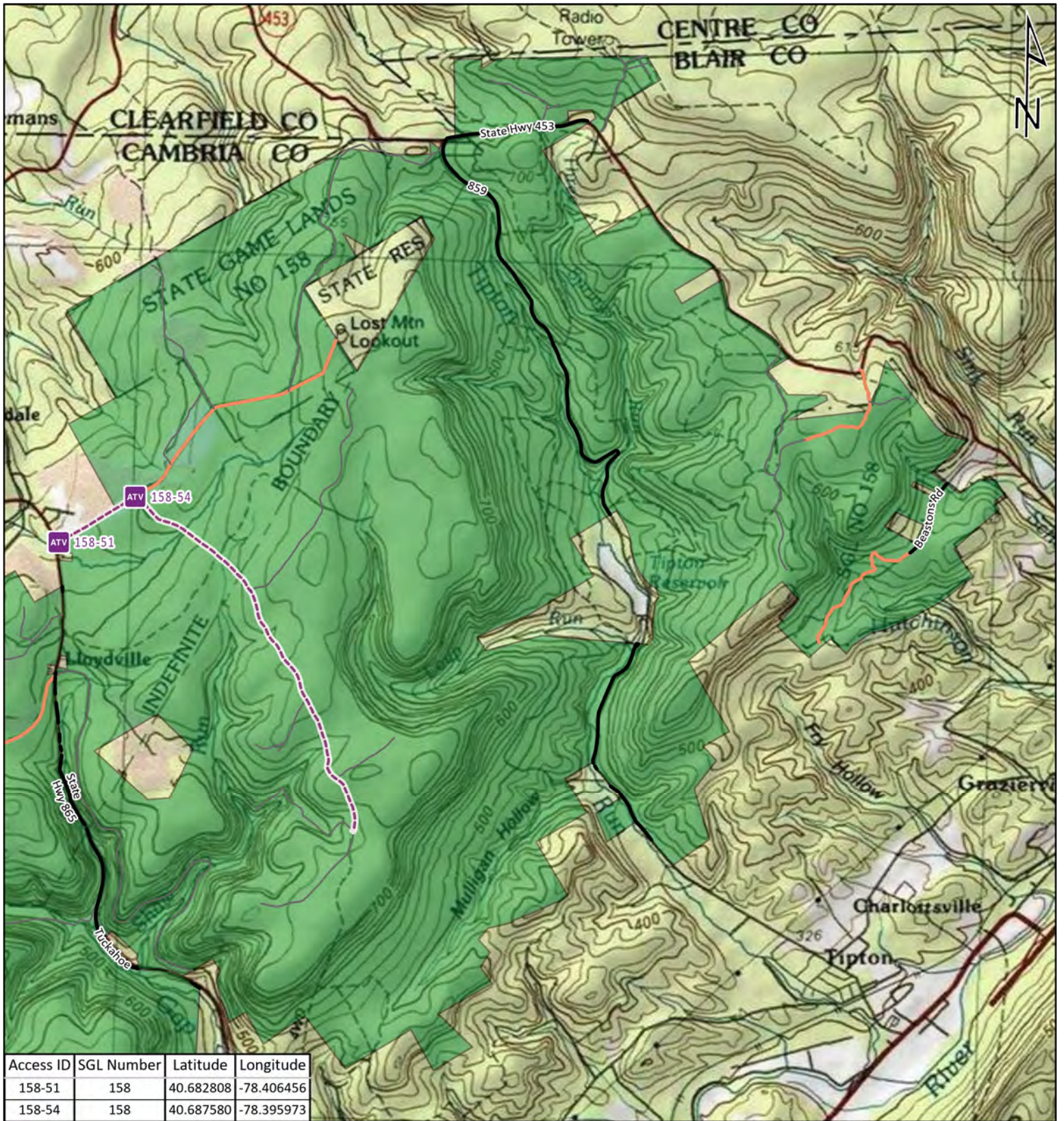


## STATE GAME LAND 117










It is unlawful to ride ATV's on state game lands, except on designated roads open for persons issued a Disabled Person Permit, and who have a valid registration from the Department of Conservation & Natural Resources.



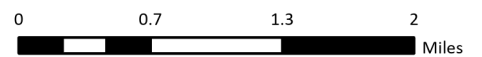
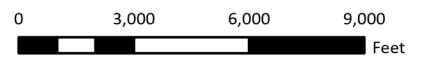


Access ID	SGL Number	Latitude	Longitude
158-51	158	40.682808	-78.406456
158-54	158	40.687580	-78.395973

-  ATV Access Trail Start
-  State Game Land Boundary
-  Game Land Roads
-  Roads Open to Vehicle Traffic
-  Roads Seasonally Open to Vehicle Traffic
-  Roads Closed to Vehicle Traffic
-  ATV Access with Permit

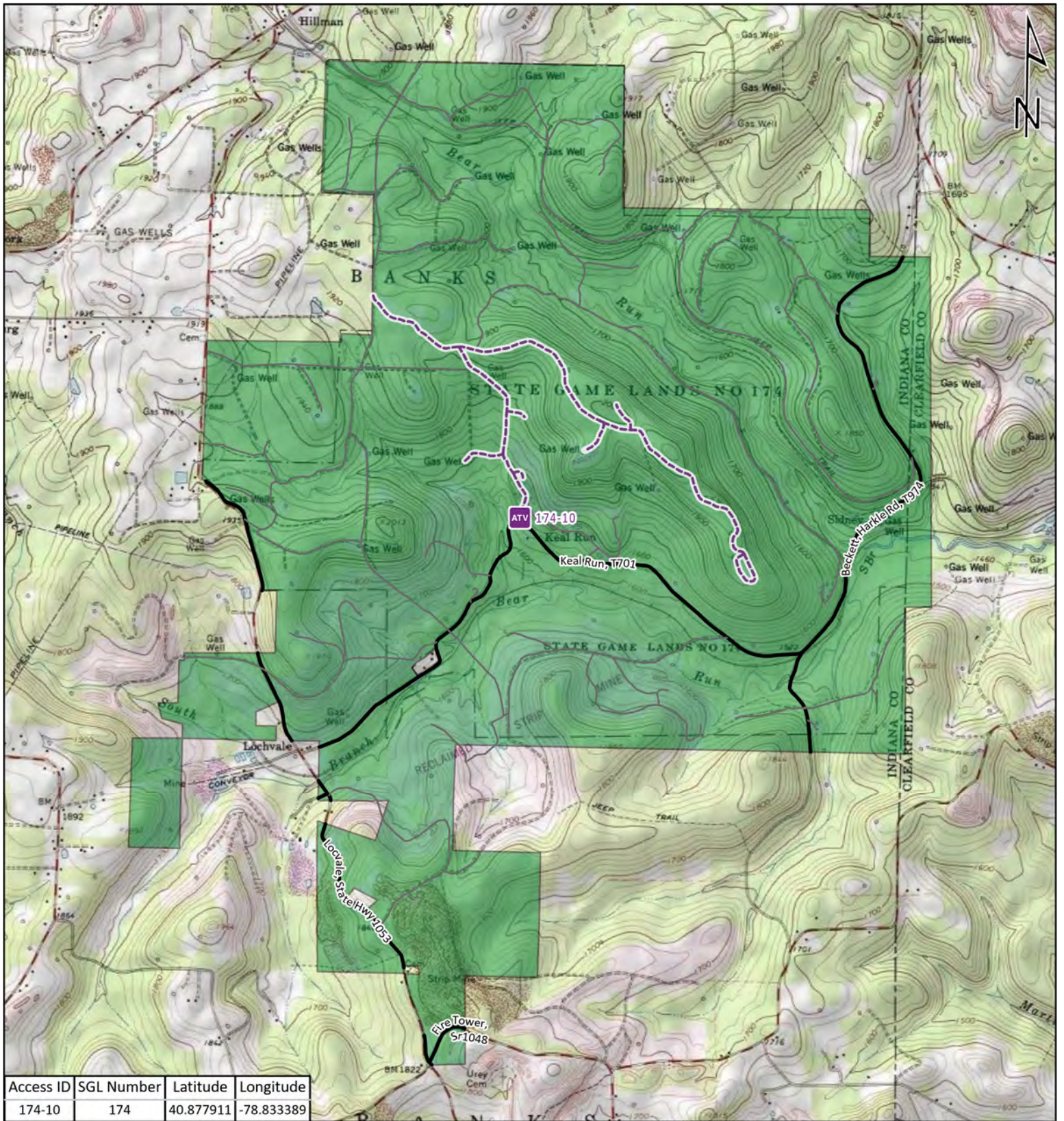


## STATE GAME LAND 158



It is unlawful to ride ATV's on state game lands, except on designated roads open for persons issued a Disabled Person Permit, and who have a valid registration from the Department of Conservation & Natural Resources.



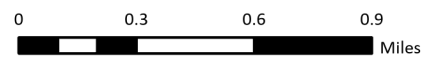
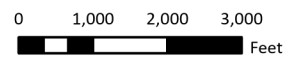


Access ID	SGL Number	Latitude	Longitude
174-10	174	40.877911	-78.833389

- ATV Access Trail Start
- State Game Land Boundary
- Game Land Roads
- Roads Open to Vehicle Traffic
- Roads Seasonally Open to Vehicle Traffic
- Roads Closed to Vehicle Traffic
- ATV Access with Permit

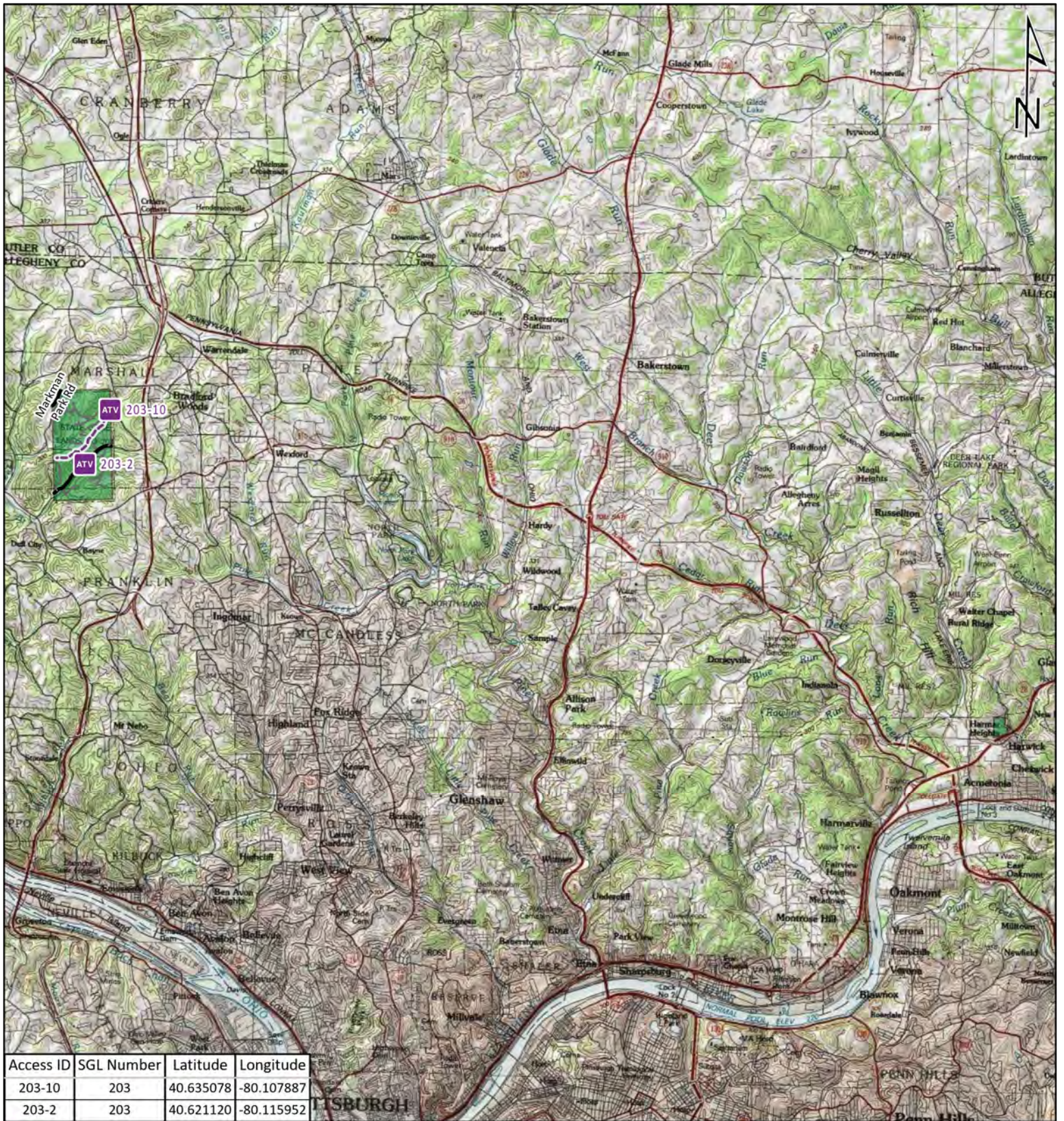









## STATE GAME LAND 174



It is unlawful to ride ATV's on state game lands, except on designated roads open for persons issued a Disabled Person Permit, and who have a valid registration from the Department of Conservation & Natural Resources.

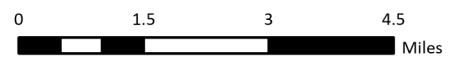
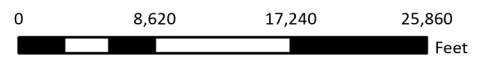




-  ATV Access Trail Start
-  State Game Land Boundary
-  Game Land Roads
-  Roads Open to Vehicle Traffic
-  Roads Seasonally Open to Vehicle Traffic
-  Roads Closed to Vehicle Traffic
-  ATV Access with Permit

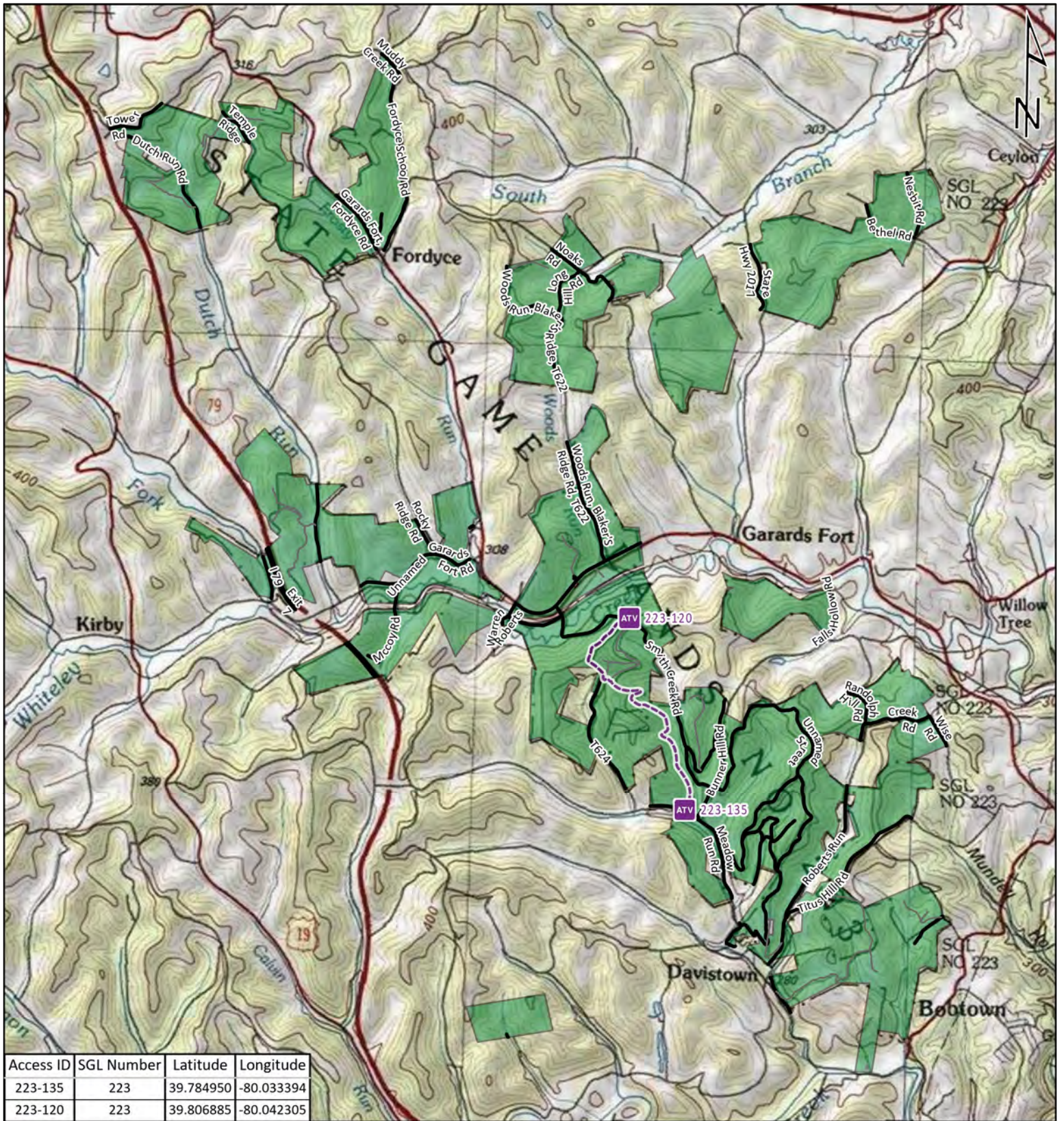


## STATE GAME LAND 203


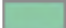







It is unlawful to ride ATV's on state game lands, except on designated roads open for persons issued a Disabled Person Permit, and who have a valid registration from the Department of Conservation & Natural Resources.



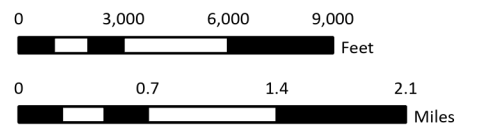


Access ID	SGL Number	Latitude	Longitude
223-135	223	39.784950	-80.033394
223-120	223	39.806885	-80.042305

-  ATV Access Trail Start
-  State Game Land Boundary
-  Game Land Roads
-  Roads Open to Vehicle Traffic
-  Roads Seasonally Open to Vehicle Traffic
-  Roads Closed to Vehicle Traffic
-  ATV Access with Permit

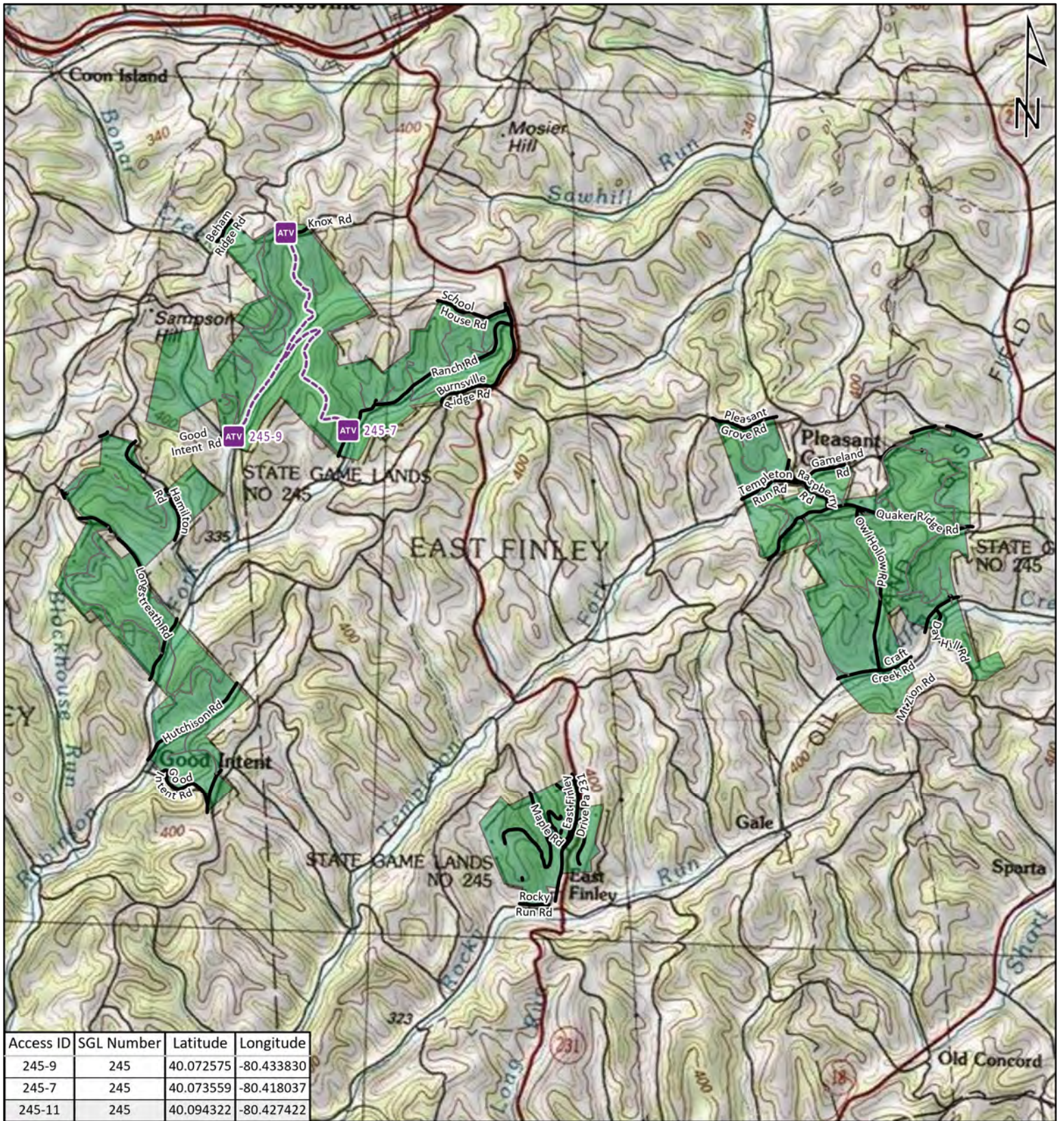


## STATE GAME LAND 223










It is unlawful to ride ATV's on state game lands, except on designated roads open for persons issued a Disabled Person Permit, and who have a valid registration from the Department of Conservation & Natural Resources.



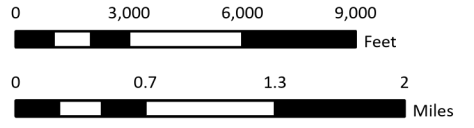


Access ID	SGL Number	Latitude	Longitude
245-9	245	40.072575	-80.433830
245-7	245	40.073559	-80.418037
245-11	245	40.094322	-80.427422

-  ATV Access Trail Start
-  State Game Land Boundary
-  Game Land Roads
-  Roads Open to Vehicle Traffic
-  Roads Seasonally Open to Vehicle Traffic
-  Roads Closed to Vehicle Traffic
-  ATV Access with Permit

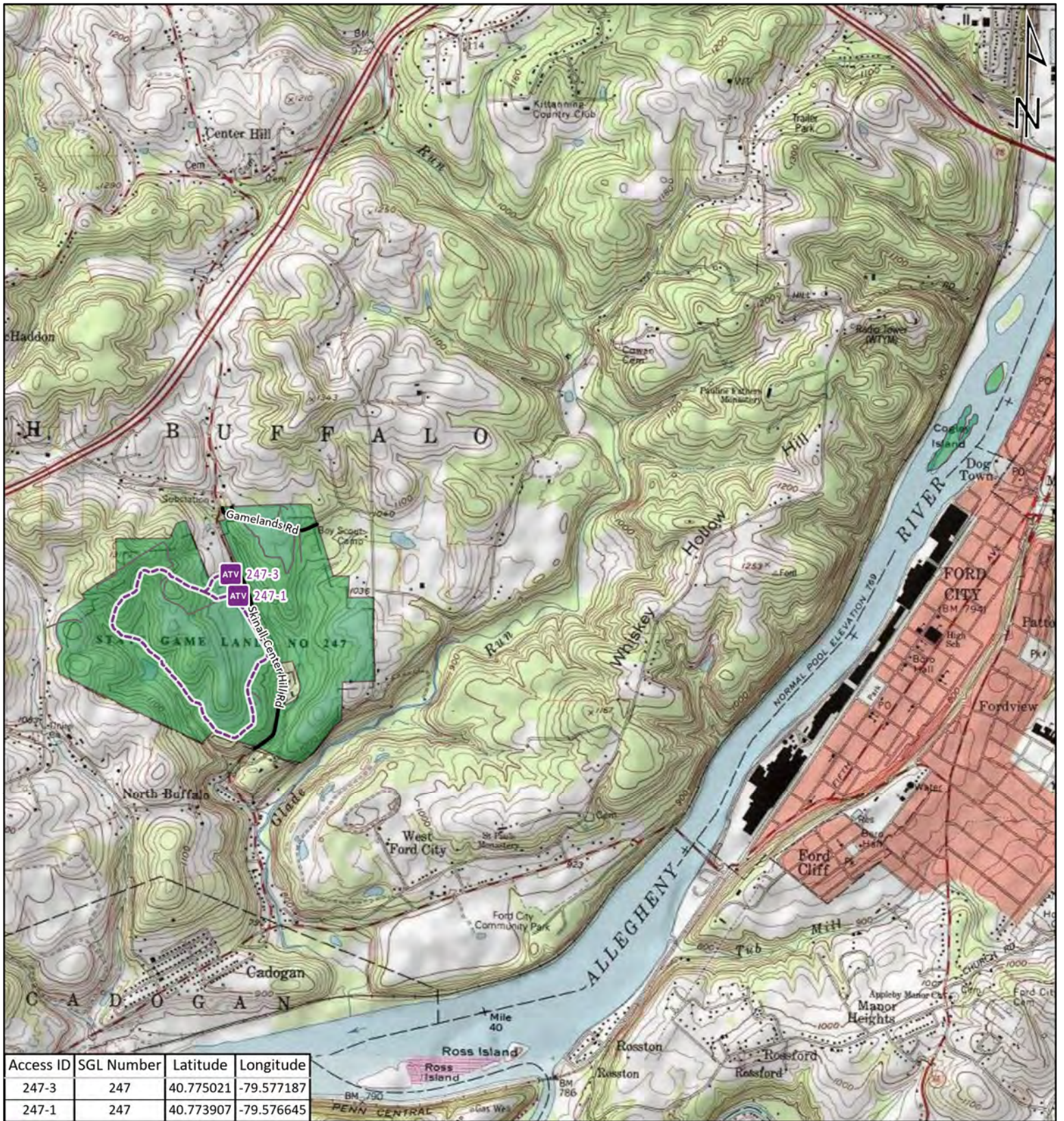









## STATE GAME LAND 245



It is unlawful to ride ATV's on state game lands, except on designated roads open for persons issued a Disabled Person Permit, and who have a valid registration from the Department of Conservation & Natural Resources.

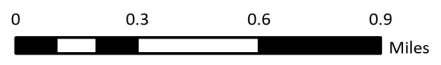
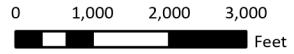




-  ATV Access Trail Start
-  State Game Land Boundary
-  Game Land Roads
-  Roads Open to Vehicle Traffic
-  Roads Seasonally Open to Vehicle Traffic
-  Roads Closed to Vehicle Traffic
-  ATV Access with Permit

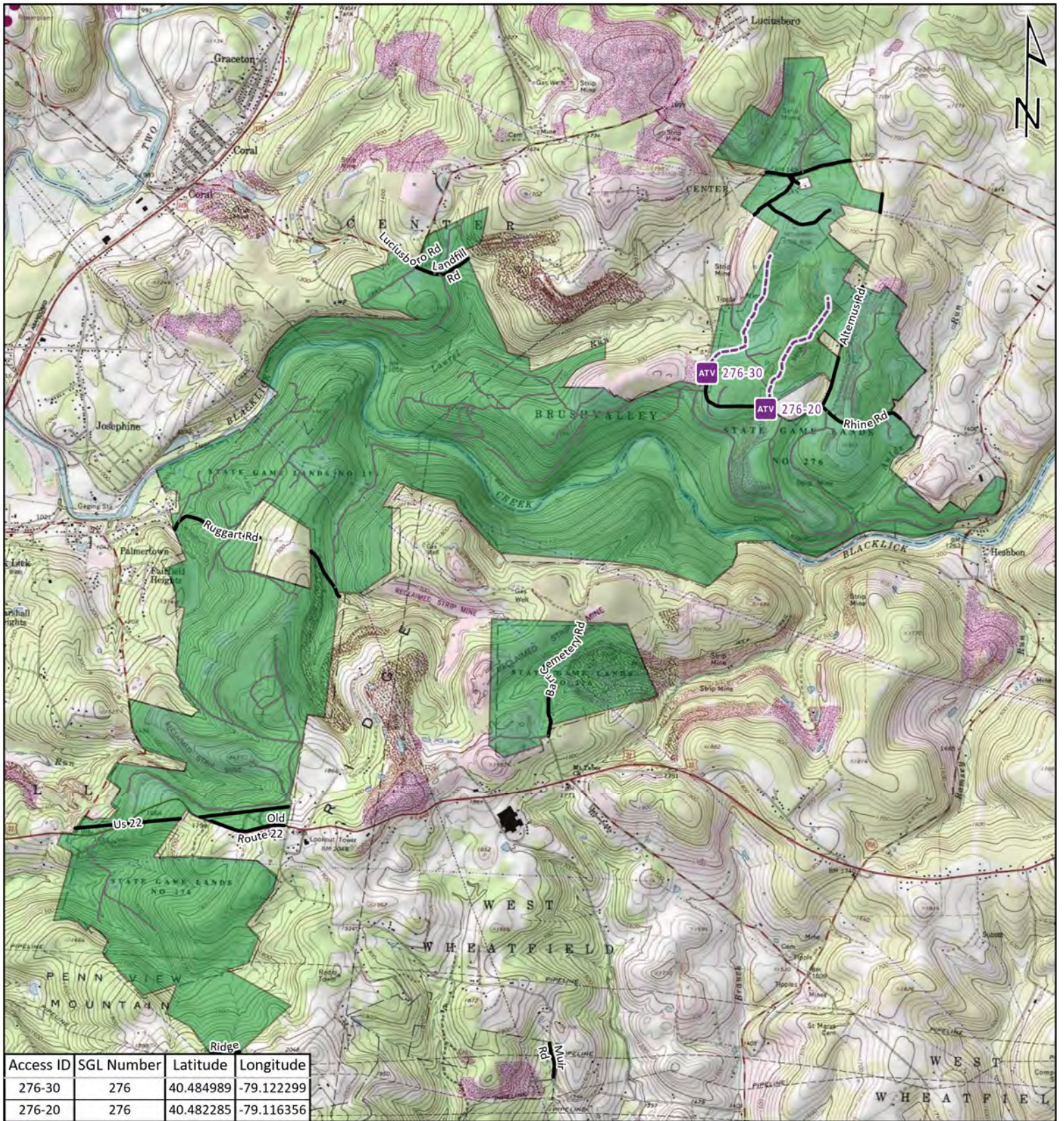


## STATE GAME LAND 247



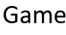






It is unlawful to ride ATV's on state game lands, except on designated roads open for persons issued a Disabled Person Permit, and who have a valid registration from the Department of Conservation & Natural Resources.





Access ID	SGL Number	Latitude	Longitude
276-30	276	40.484989	-79.122299
276-20	276	40.482285	-79.116356

-  ATV Access Trail Start
-  State Game Land Boundary
-  Game Land Roads
-  Roads Open to Vehicle Traffic
-  Roads Seasonally Open to Vehicle Traffic
-  Roads Closed to Vehicle Traffic
-  ATV Access with Permit

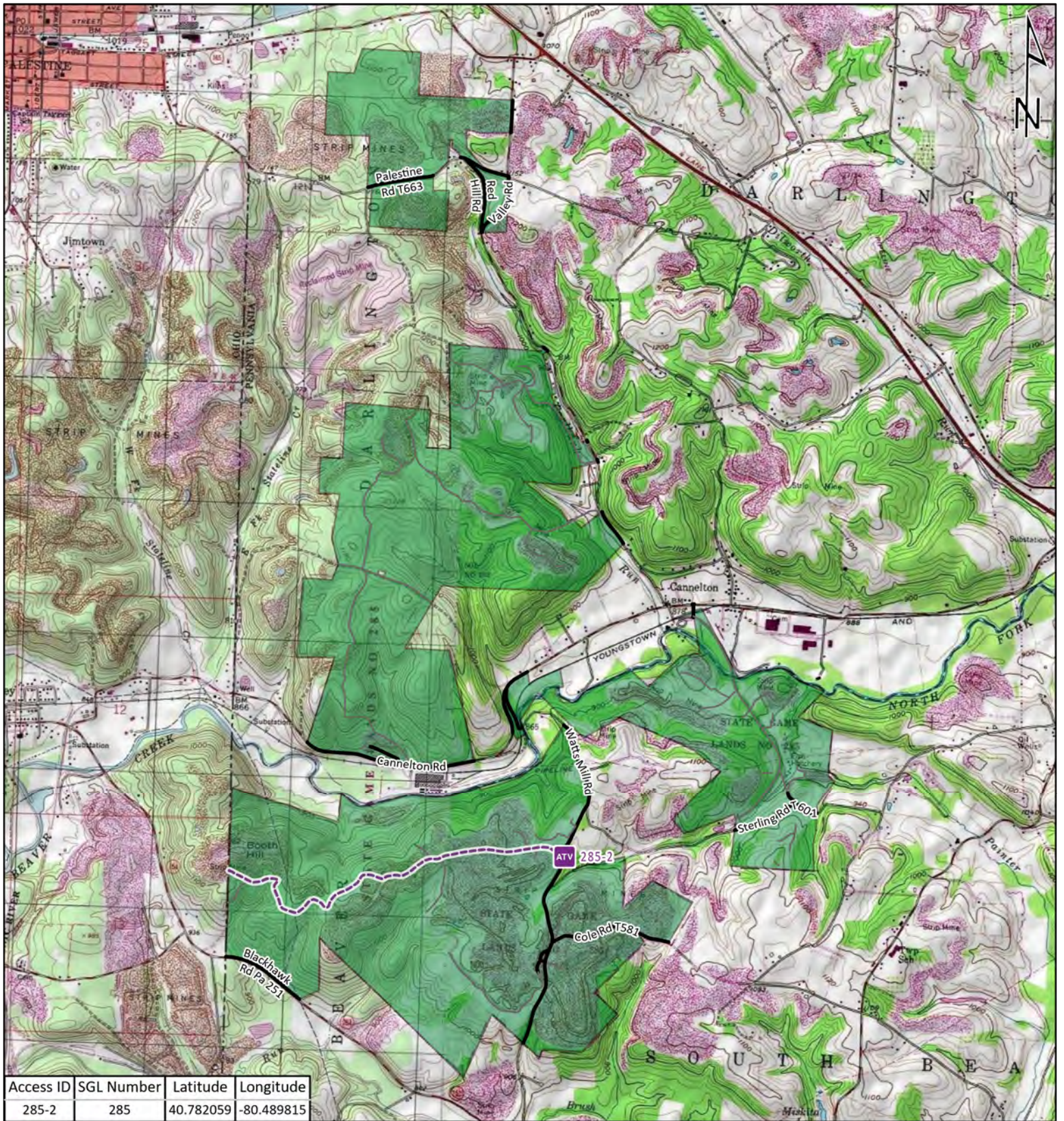


## STATE GAME LAND 276









It is unlawful to ride ATV's on state game lands, except on designated roads open for persons issued a Disabled Person Permit, and who have a valid registration from the Department of Conservation & Natural Resources.



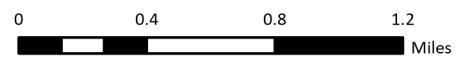
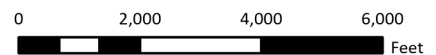


Access ID	SGL Number	Latitude	Longitude
285-2	285	40.782059	-80.489815

-  ATV Access Trail Start
-  State Game Land Boundary
- Game Land Roads**
-  Roads Open to Vehicle Traffic
-  Roads Seasonally Open to Vehicle Traffic
-  Roads Closed to Vehicle Traffic
-  ATV Access with Permit

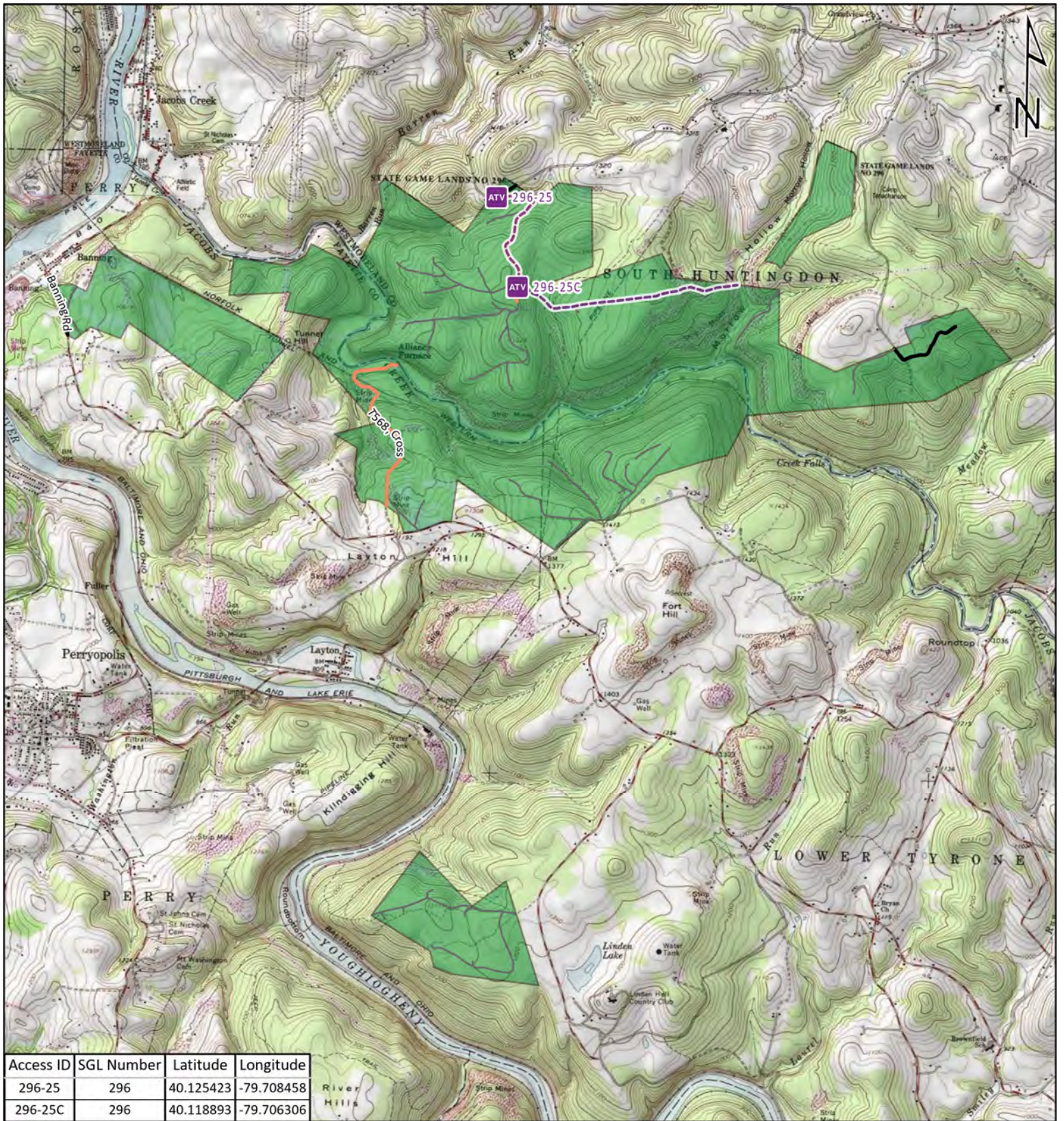


## STATE GAME LAND 285


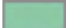







It is unlawful to ride ATV's on state game lands, except on designated roads open for persons issued a Disabled Person Permit, and who have a valid registration from the Department of Conservation & Natural Resources.





Access ID	SGL Number	Latitude	Longitude
296-25	296	40.125423	-79.708458
296-25C	296	40.118893	-79.706306

-  ATV Access Trail Start
-  State Game Land Boundary
-  Game Land Roads
-  Roads Open to Vehicle Traffic
-  Roads Seasonally Open to Vehicle Traffic
-  Roads Closed to Vehicle Traffic
-  ATV Access with Permit



## STATE GAME LAND 296



It is unlawful to ride ATV's on state game lands, except on designated roads open for persons issued a Disabled Person Permit, and who have a valid registration from the Department of Conservation & Natural Resources.