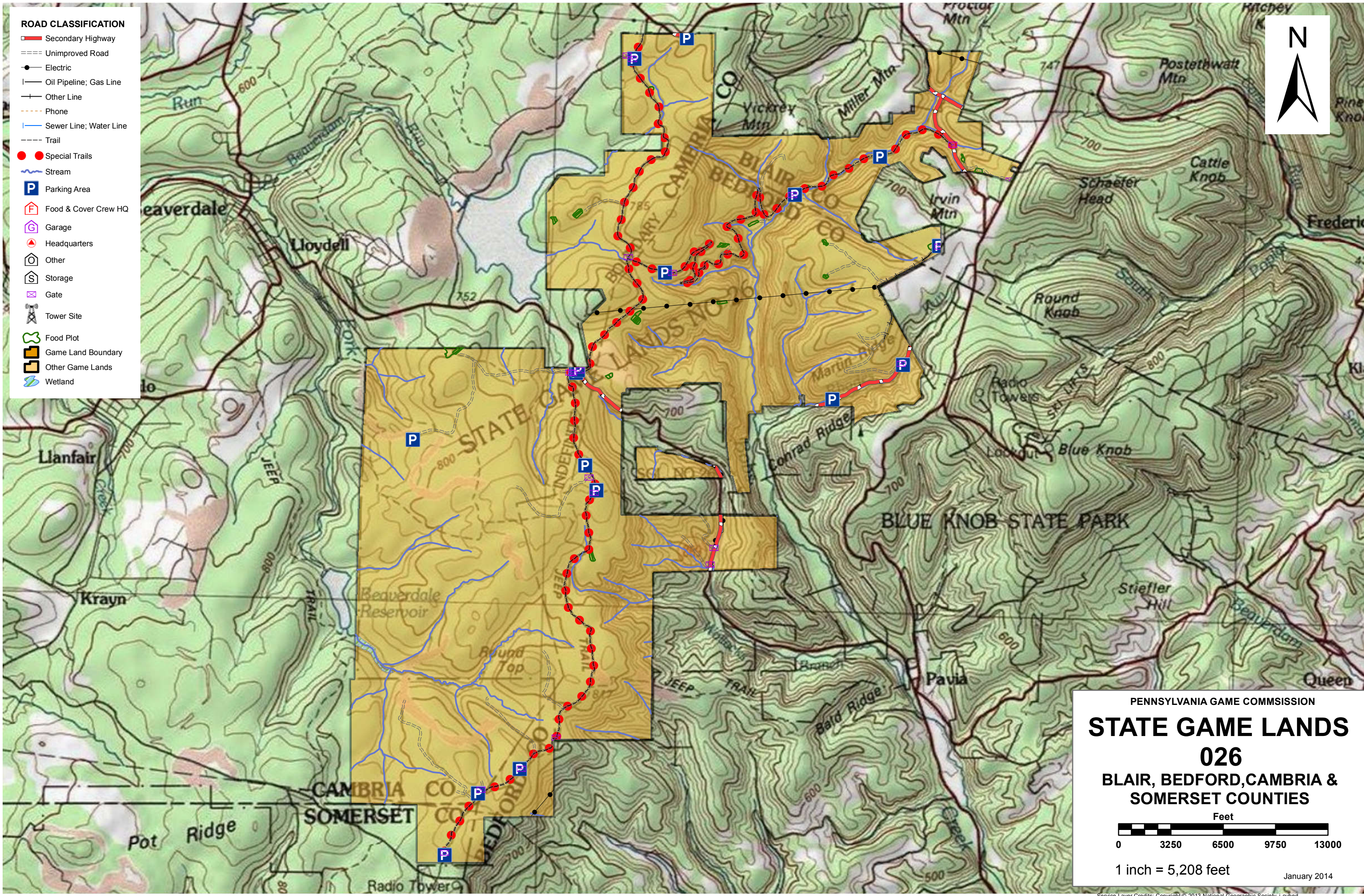


ROAD CLASSIFICATION

- Secondary Highway
- Unimproved Road
- Electric
- Oil Pipeline; Gas Line
- Other Line
- Phone
- Sewer Line; Water Line
- Trail
- Special Trails
- Stream
- Parking Area
- Food & Cover Crew HQ
- Garage
- Headquarters
- Other
- Storage
- Gate
- Tower Site
- Food Plot
- Game Land Boundary
- Other Game Lands
- Wetland



PENNSYLVANIA GAME COMMISSION

STATE GAME LANDS 026

BLAIR, BEDFORD, CAMBRIA & SOMERSET COUNTIES

Feet

0 3250 6500 9750 13000

1 inch = 5,208 feet

January 2014

Service Layer Credits: Copyright © 2013 National Geographic Society, i-cubed



SPORTSMEN'S RECREATION MAP



STATE GAME LANDS No. 026 R, BEDFORD, CAMBRIA & SOMERSET COUN

Each time a hunter buys a hunting license, the money he spends goes toward many facets of wildlife management. Since 1920, close to a million and a half acres of State Game Lands have been acquired with these funds. Each year nearly \$7,000,000 is spent to improve wildlife habitat. Habitat improvements enhance living conditions for non-game birds and mammals as well as those species which are hunted. Pennsylvania hunters willingly share these lands with the non-hunting public, and with few exceptions, State Game Lands are open for general use year round. Surveys indicate that hunting accounts for only thirty-five percent of game land usage. The remaining sixty-five percent is used by the general public for non-hunting purposes.

“Working Together for Wildlife” is a Game Commission program providing everyone an opportunity to help support wildlife management in the areas for endangered and non-game animals. Monies derived from the “Working Together for Wildlife” Program are being used in Pennsylvania to re-introduce the osprey, river otter, bald eagle, peregrine falcon and provide habitat for other birds and mammals indigenous to the Commonwealth. Construction placement of blue bird houses on State Game Lands provides needed homes for this beautiful songbird. Islands in the Susquehanna River have been set aside as propagations areas for non-game shore birds. Numerous other projects are planned on State Game Lands and other public properties which will also provide food and habitat for non-game wildlife.

The future of Pennsylvania’s wildlife resources requires the concern, cooperation and financial support of everyone, hunters and non-hunters alike. “Working Together for Wildlife” is the answer. Send your contributions to “Working Together for Wildlife”, 2001 Elmerton Avenue, Harrisburg, Pennsylvania 17110-9797.

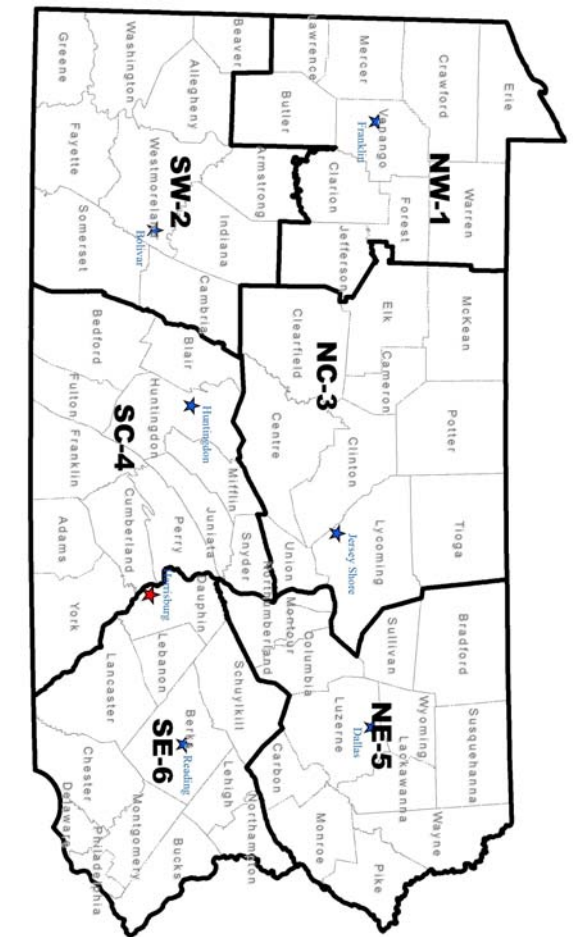
COMMONWEALTH OF PENNSYLVANIA
PENNSYLVANIA GAME COMMISSION

State Game Lands (SGL) 026 in the Game Commission’s Southcentral Region consists of 12,346 acres in two tracts in Lincoln and Pavia townships, Bedford County; Greenfield Township in Blair County; Adams, Portage, and Summerhill townships in Cambria County; and Ogle Township in Somerset County. This Game Lands is approximately 2 miles south of State Route (SR) 164 between the villages of Blue Knob and Portage and approximately 6 miles north of SR 56 between the villages of Pleasantville and Ogletown. Eastern portions border Blue Knob State Park. SGL 026 is entirely with wildlife management unit 2C.

SGL 026 is accessible from the north by County Line Road and Diamond Lane to the south via Skyline Drive and Buffalo Road. SR 869 bisects the Game Lands in a southeast to northwest direction. Monument Road, originating at SR 869 near the village of Pavia, permits access to one section. Three roads are available to public travel during the fall hunting seasons in several sections of the game land. Origins of these roads are along Diamond Lane and SR 869. One of the seasonal roads originating along SR 869 heads in a northerly direction. The other seasonal road lies south of SR 869, extending in a southerly direction. Access to the remaining sections is limited by paucity of roads; adjacent private lands also affect access. Parking is available at each access area, enabling pedestrian access to the existing network of administrative roads and trails, which increase access to all compartments. The 28-mile Lost Turkey Trail traverses the southern end and central parts of the SGL.

Due to forested, mountainous terrain, SGL 026 receives considerable numbers of deer, bear, and turkey hunters. Grouse hunters use the young forested habitats produced from timber operations or natural events while squirrel hunters use more mature forest. Trapping pressure is minimal, but some furtaking occurs. SGL 26 is use sparingly by local hikers, birders, snowmobilers, and to lesser extent horseback riders. A snowmobile trail runs through 8.8 miles of the property and experiences moderate use. Horse and bike trails and the “Lost Turkey Trail” course through the SGL are used lightly.

Common game species of SGL 026 include white-tailed deer, black bear, raccoon, gray squirrels, and coyote. A dense and growing fisher population is located along the Allegheny Front that includes SGL 026. This Game Lands supports a great diversity of birds. Wildlife Action Plan songbirds observed during the second breeding bird atlases on SGL 026 include scarlet tanager, Acadian flycatcher, Louisiana waterthrush, wood thrush, blue-headed vireo, and black-throated green warbler.



- | | | |
|---|---|------------------------------|
| 6 | SOUTHEAST REGIONAL HEADQUARTERS
253 SNYDER RD., READING, PA 19605 | 610-926-3136
610-926-3137 |
| 5 | NORTHEAST REGIONAL HEADQUARTERS
3917 MEMORIAL HWY, DALLAS, PA 18612 | 570-675-1143
570-675-1144 |
| 4 | 8627 WILLIAM PENN HWY, HUNTINGDON, PA 16652 | 814-643-1835 |
| 3 | SOUTHCENTRAL REGIONAL HEADQUARTERS
1566 S ROUTE 44 HWY, JERSEY SHORE, PA 17740 | 814-643-1831
814-643-1835 |
| 2 | NORTHWEST REGIONAL HEADQUARTERS
4820 ROUTE 711, BOULCAR, PA 15923 | 724-238-9524
724-238-9523 |
| 1 | NORTHWEST REGIONAL HEADQUARTERS
1509 PITTSBURG RD, FRANKLIN, PA 16323 | 814-432-3187
814-432-3188 |

FOR FURTHER INFORMATION
CONTACT THE FOLLOWING: