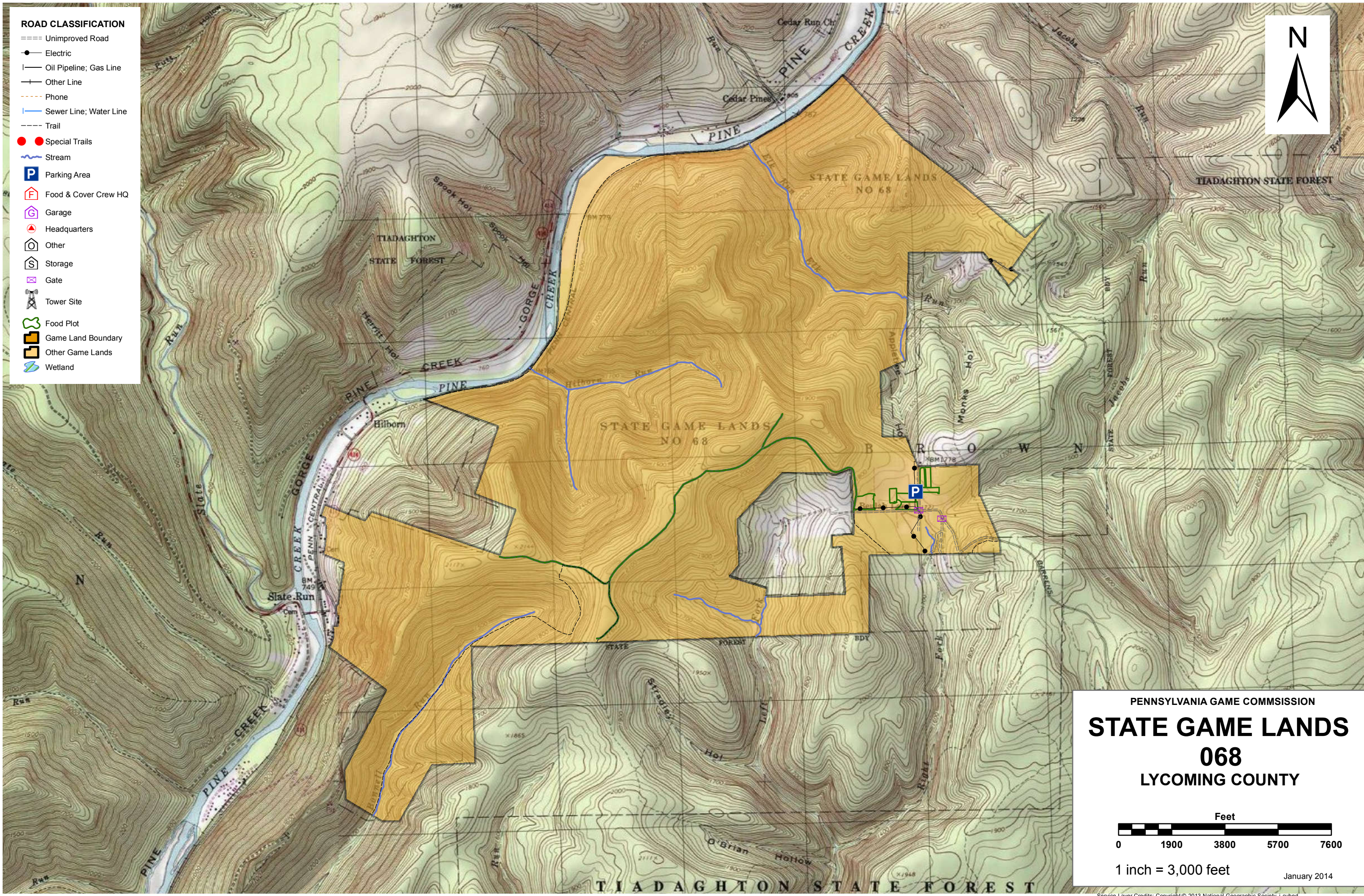


- ROAD CLASSIFICATION**
- ==== Unimproved Road
  - Electric
  - Oil Pipeline; Gas Line
  - Other Line
  - - - Phone
  - Sewer Line; Water Line
  - - - Trail
  - Special Trails
  - ~ Stream
  - P Parking Area
  - 🏠 Food & Cover Crew HQ
  - 🏠 Garage
  - 📍 Headquarters
  - 🏠 Other
  - 🏠 Storage
  - 🚪 Gate
  - 📡 Tower Site
  - 🌿 Food Plot
  - 🗡 Game Land Boundary
  - 🗡 Other Game Lands
  - 🌊 Wetland



PENNSYLVANIA GAME COMMISSION

# STATE GAME LANDS 068

LYCOMING COUNTY

Feet

0 1900 3800 5700 7600

1 inch = 3,000 feet

January 2014

Service Layer Credits: Copyright © 2013 National Geographic Society, I-cubed





# SPORTSMEN'S RECREATION MAP



## STATE GAME LANDS No. 068 LYCOMING COUNTY

Each time a hunter buys a hunting license, the money he spends goes toward many facets of wildlife management. Since 1920, close to a million and a half acres of State Game Lands have been acquired with these funds. Each year nearly \$7,000,000 is spent to improve wildlife habitat. Habitat improvements enhance living conditions for non-game birds and mammals as well as those species which are hunted. Pennsylvania hunters willingly share these lands with the non-hunting public, and with few exceptions, State Game Lands are open for general use year round. Surveys indicate that hunting accounts for only thirty-five percent of game land usage. The remaining sixty-five percent is used by the general public for non-hunting purposes.

“Working Together for Wildlife” is a Game Commission program providing everyone an opportunity to help support wildlife management in the areas for endangered and non-game animals. Monies derived from the “Working Together for Wildlife” Program are being used in Pennsylvania to re-introduce the osprey, river otter, bald eagle, peregrine falcon and provide habitat for other birds and mammals indigenous to the Commonwealth. Construction placement of blue bird houses on State Game Lands provides needed homes for this beautiful songbird. Islands in the Susquehanna River have been set aside as propagations areas for non-game shore birds. Numerous other projects are planned on State Game Lands and other public properties which will also provide food and habitat for non-game wildlife.

The future of Pennsylvania’s wildlife resources requires the concern, cooperation and financial support of everyone, hunters and non-hunters alike. “Working Together for Wildlife” is the answer. Send your contributions to “Working Together for Wildlife”, 2001 Elmerton Avenue, Harrisburg, Pennsylvania 17110-9797.

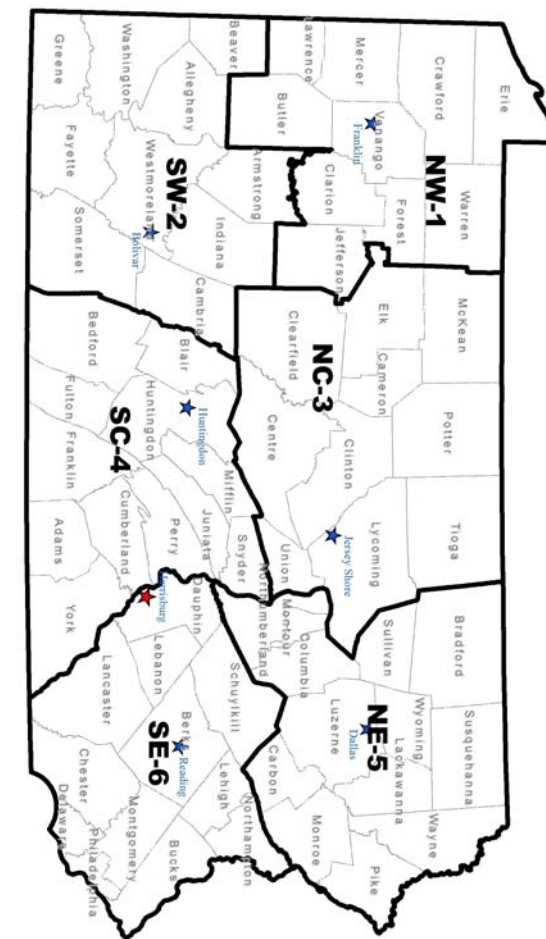
COMMONWEALTH OF PENNSYLVANIA  
PENNSYLVANIA GAME COMMISSION

State Game Land (SGL) 068 (3921.88 acres) is located in Lycoming County within the Pennsylvania Game Commission's Northcentral Region and Wildlife Management Unit 2G. The game land is in one tract and managed in two compartments, access is limited due to being bordered by hunting clubs and other private lands.

State Game Land 068 topography is mostly very steep side hills, highest elevation is 2,200 feet and the lowest is 760 feet along Pine Creek. The soils are primarily suited for woodlands except for Beulah Land where they are well suited for crops and pasture. It is nearly 100% forested with 3,079 acres typed as Limited Opportunity, 612 acres typed as Multiple Opportunity and 56 acres as Herbaceous. The majority of the stands are in the 81-125 year class with 13% in pole timber, 81% in small saw timber and 2% in large saw timber. Dry Oak types cover 69%, Grey Birch with heavy laurel covers 11%, Northern Hardwood types cover 10%, and Conifer types cover 6% of this game lands. There is no early successional habitat. Located within the Pine Creek watershed the game land has six watercourses: Bonnell Run, Elk Run, Hilborn Run, Left Fork Mill Run, Right Fork Mill Run, and an unnamed tributary. Both forks of Mill Run are rated Exceptional Value streams and the remaining streams are rated as High Quality.

State Game Land 068 is located within the Northern Allegheny Plateau Important Mammal Area and near the Pine Creek Gorge Natural Area Important Bird Area. There are no endangered or threatened bird and mammal species currently known to occur on this game lands. Common mammals found include black bear, white-tailed deer, porcupine, coyote, bobcat, rabbits, and squirrels. Mammal species of greatest conservation need may include snowshoe hare, Allegheny woodrat, and fisher. Wild turkey and ruffed grouse are common on this game lands and it likely supports many bird species of greatest conservation need, such as Louisiana waterthrush, scarlet tanager, wood thrush, and blackburnian warbler. Bald eagles are known to nest along Pine Creek and there is a known great blue heron colony nearby.

The management goals for State Game Land 068 are to maintain Late Successional Habitat, create Early Successional Habitat where opportunity exists, increase the Conifer Component, improve herbaceous openings and orchards, and maintain infrastructure.



- |   |   |                              |
|---|---|------------------------------|
| 6 | SOUTHEAST REGIONAL HEADQUARTERS<br>253 SNYDER RD., READING, PA 19605              | 610-926-3136<br>610-926-3137 |
| 5 | NORTHEAST REGIONAL HEADQUARTERS<br>3917 MEMORIAL HWY, DALLAS, PA 18612            | 570-675-1143<br>570-675-1144 |
| 4 | 8627 WILLIAM PENN HWY, HUNTINGDON, PA 16652                                       | 814-643-1831<br>814-643-1835 |
| 3 | SOUTHCENTRAL REGIONAL HEADQUARTERS<br>1566 S ROUTE 44 HWY, JERSEY SHORE, PA 17740 | 570-398-4744<br>570-398-4745 |
| 2 | NORTHWEST REGIONAL HEADQUARTERS<br>4820 ROUTE 711, BOULCAR, PA 15923              | 724-238-9523<br>724-238-9524 |
| 1 | SOUTH WEST REGIONAL HEADQUARTERS<br>1509 PITTSBURG RD, FRANKLIN, PA 16323         | 814-432-3187<br>814-432-3188 |

FOR FURTHER INFORMATION  
CONTACT THE FOLLOWING: