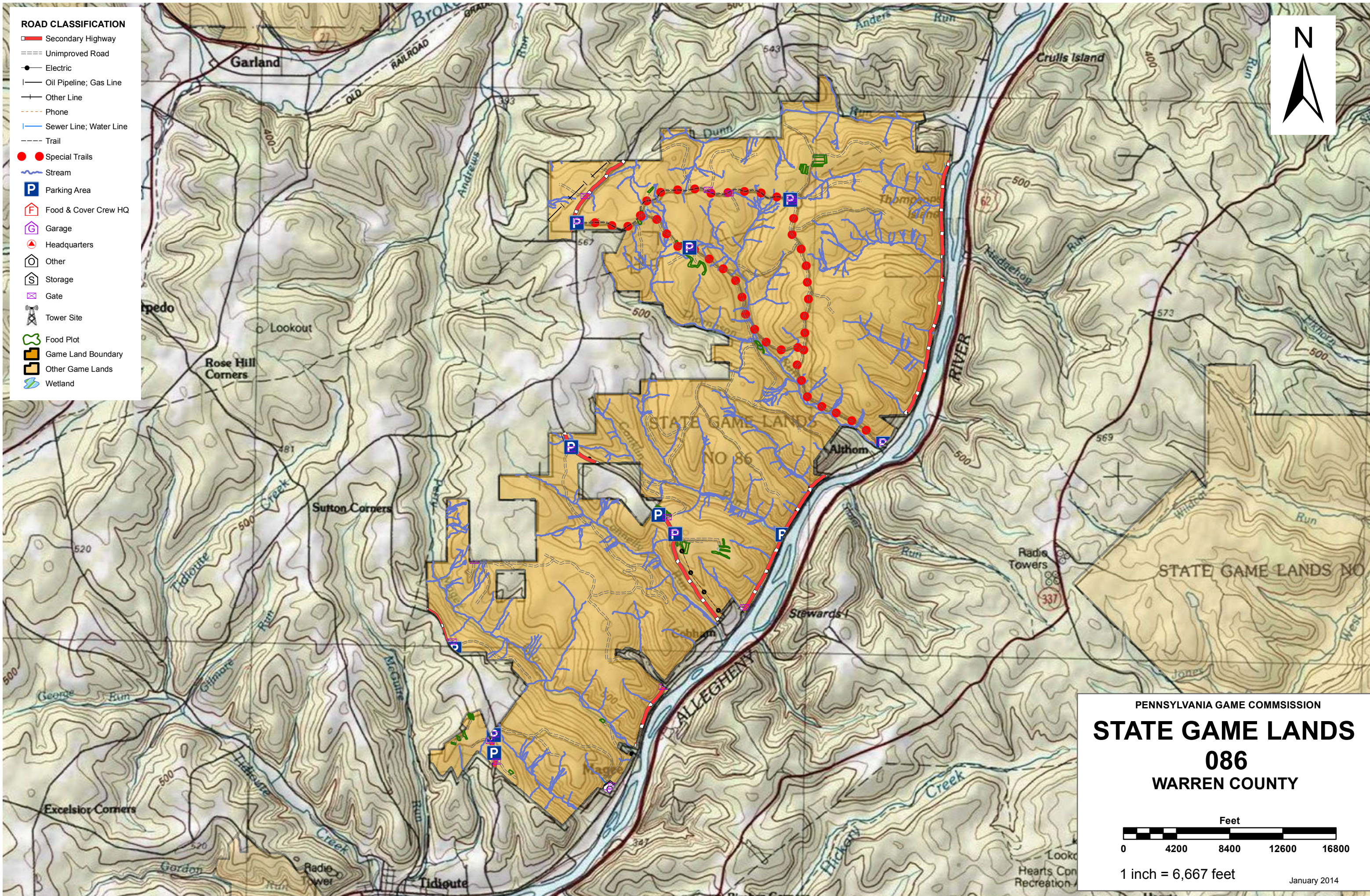


ROAD CLASSIFICATION

- Secondary Highway
- Unimproved Road
- Electric
- Oil Pipeline; Gas Line
- Other Line
- Phone
- Sewer Line; Water Line
- Trail
- Special Trails
- Stream
- Parking Area
- Food & Cover Crew HQ
- Garage
- Headquarters
- Other
- Storage
- Gate
- Tower Site
- Food Plot
- Game Land Boundary
- Other Game Lands
- Wetland



PENNSYLVANIA GAME COMMISSION

STATE GAME LANDS

086

WARREN COUNTY

Feet

0 4200 8400 12600 16800

1 inch = 6,667 feet

January 2014

Service Layer Credits: Copyright © 2013 National Geographic Society, i-cubed



SPORTSMEN'S RECREATION MAP



STATE GAME LANDS No. 086 WARREN COUNTY

Each time a hunter buys a hunting license, the money he spends goes toward many facets of wildlife management. Since 1920, close to a million and a half acres of State Game Lands have been acquired with these funds. Each year nearly \$7,000,000 is spent to improve wildlife habitat. Habitat improvements enhance living conditions for non-game birds and mammals as well as those species which are hunted. Pennsylvania hunters willingly share these lands with the non-hunting public, and with few exceptions, State Game Lands are open for general use year round. Surveys indicate that hunting accounts for only thirty-five percent of game land usage. The remaining sixty-five percent is used by the general public for non-hunting purposes.

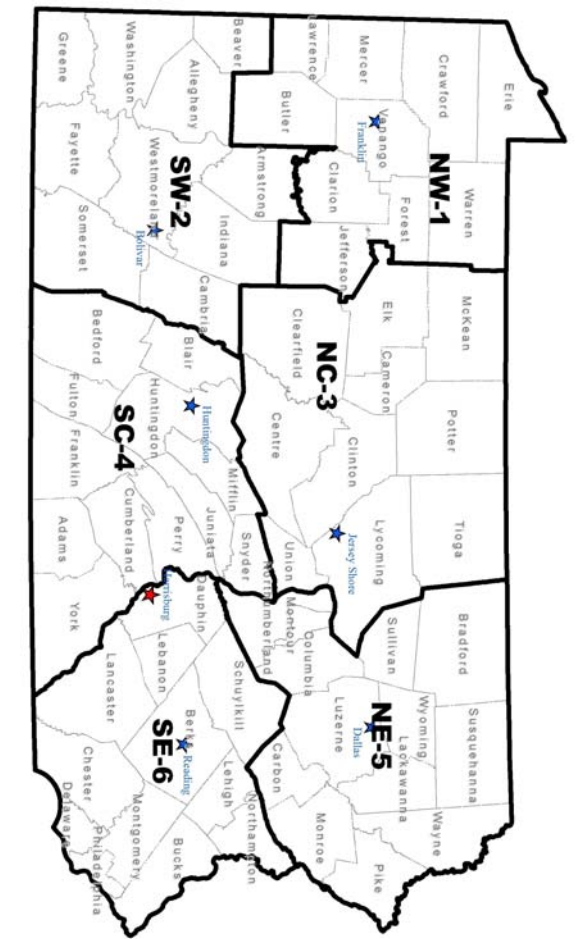
“Working Together for Wildlife” is a Game Commission program providing everyone an opportunity to help support wildlife management in the areas for endangered and non-game animals. Monies derived from the “Working Together for Wildlife” Program are being used in Pennsylvania to re-introduce the osprey, river otter, bald eagle, peregrine falcon and provide habitat for other birds and mammals indigenous to the Commonwealth. Construction placement of blue bird houses on State Game Lands provides needed homes for this beautiful songbird. Islands in the Susquehanna River have been set aside as propagations areas for non-game shore birds. Numerous other projects are planned on State Game Lands and other public properties which will also provide food and habitat for non-game wildlife.

The future of Pennsylvania’s wildlife resources requires the concern, cooperation and financial support of everyone, hunters and non-hunters alike. “Working Together for Wildlife” is the answer. Send your contributions to “Working Together for Wildlife”, 2001 Elmerton Avenue, Harrisburg, Pennsylvania 17110-9797.

State Game Land (SGL) 086 is comprised of one contiguous tract containing approximately 14,320 acres in Deerfield and Brokenstraw Townships, Warren County in the Game Commission's Northwest Region (Wildlife Management Unit 2F). SGL 086 comprises the majority of the western bank of the Allegheny River from Tidioute north to Anders Run.

The majority of SGL 086 was purchased in 1933, 1934 and 1935. Additional parcels were purchased or acquired over the years with the most recent occurring in 2011 with a land for timber exchange with Clear Lake Lumber adding 18 acres at the intersection of Davey Hill Road and Rocky Ridge Road. The vast majority of SGL 086 was completely logged during the early 1900's. Much of the timber was used for the chemical industry as well. Due to the steep nature of the hills along the Allegheny River, log chutes were constructed to transport timber from the hillsides and upper reaches of the area to the river and to railroad sidings. The log chutes were

SGL 086 is best suited to deer, bear, turkey, squirrel and grouse hunting as well as terrestrial furbearer trapping. Notable mammal species occurring on this SGL include black bear, whitetail deer, bobcat, beaver, river otter, fisher, northern water shrew, northern long-eared bat and silverhaired bat. Notable bird species include wild turkey, ruffed grouse, American woodcock, bald eagle, blue-winged warbler, Cerulean warbler, Louisiana waterthrush, scarlet tanager and wood thrush.



- 1 NORTHWEST REGIONAL HEADQUARTERS
1509 PITTSBURG RD, FRANKLIN, PA 16323
- 2 SOUTHWEST REGIONAL HEADQUARTERS
4820 ROUTE 711, BOULCAR, PA 15923
- 3 NORTHCENTRAL REGIONAL HEADQUARTERS
1566 S ROUTE 44 HWY, JERSEY SHORE, PA 17740
- 4 SOUTHCENTRAL REGIONAL HEADQUARTERS
8627 WILLIAM PENN HWY, HUNTINGDON, PA 16652
- 5 NORTHEAST REGIONAL HEADQUARTERS
3917 MEMORIAL HWY, DALLAS, PA 18612
- 6 SOUTHEAST REGIONAL HEADQUARTERS
253 SNYDER RD, READING, PA 19605

FOR FURTHER INFORMATION
CONTACT THE FOLLOWING:

- 814-432-3187
- 814-432-3188
- 724-238-9523
- 724-238-9524
- 570-398-4744
- 570-398-4745
- 814-643-1831
- 814-643-1835
- 570-675-1143
- 570-675-1144
- 610-926-3136
- 610-926-3137

COMMONWEALTH OF PENNSYLVANIA
PENNSYLVANIA GAME COMMISSION