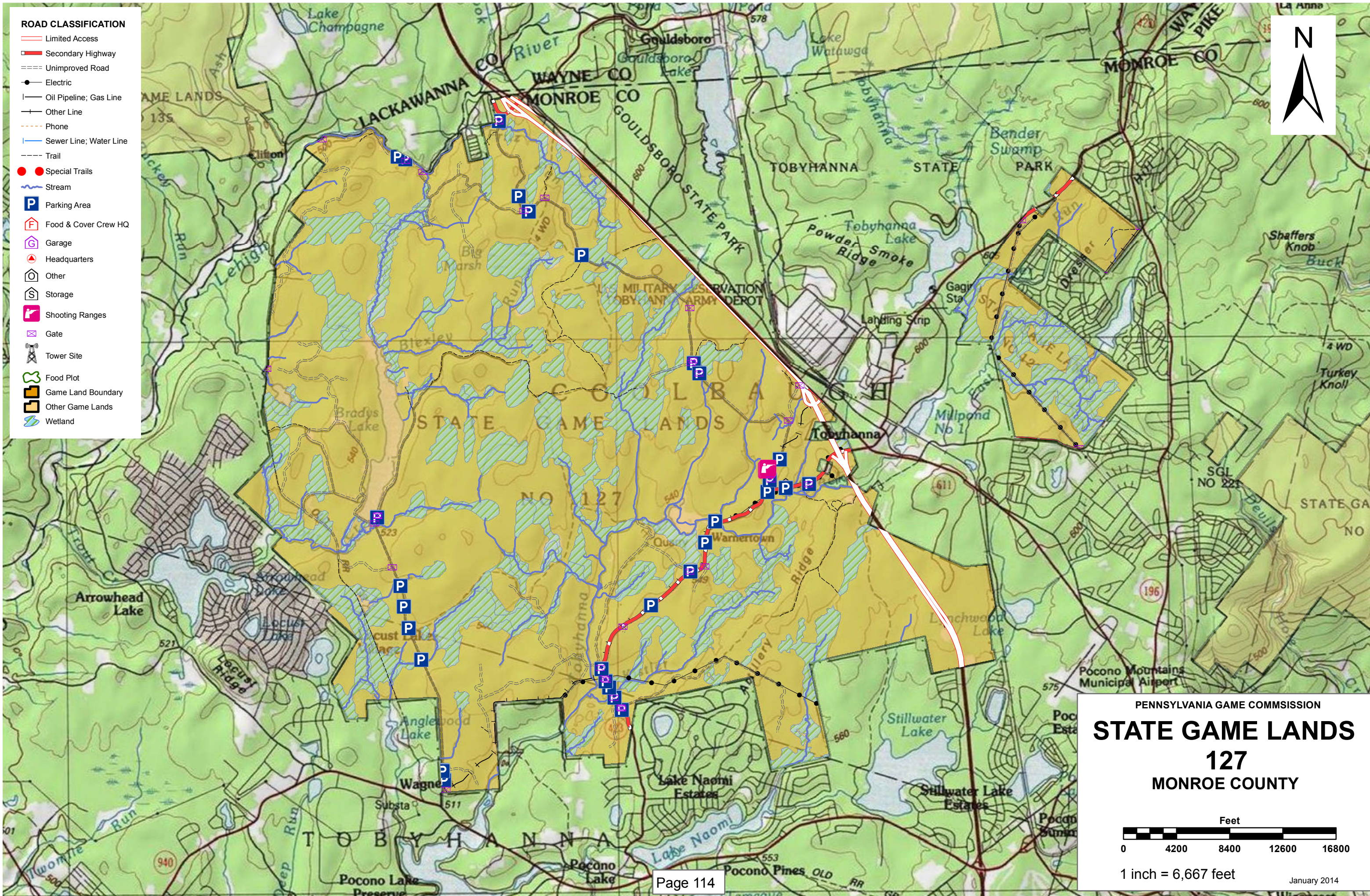


**ROAD CLASSIFICATION**

- Limited Access
- Secondary Highway
- Unimproved Road
- Electric
- Oil Pipeline; Gas Line
- Other Line
- Phone
- Sewer Line; Water Line
- Trail
- Special Trails
- Stream
- Parking Area
- Food & Cover Crew HQ
- Garage
- Headquarters
- Other
- Storage
- Shooting Ranges
- Gate
- Tower Site
- Food Plot
- Game Land Boundary
- Other Game Lands
- Wetland



PENNSYLVANIA GAME COMMISSION

# STATE GAME LANDS

## 127

### MONROE COUNTY

Feet

0 4200 8400 12600 16800

1 inch = 6,667 feet

January 2014

Service Layer Credits: Copyright © 2013 National Geographic Society, I-cubed



# SPORTSMEN'S RECREATION MAP



## STATE GAME LANDS No. 127 MONROE COUNTY

Each time a hunter buys a hunting license, the money he spends goes toward many facets of wildlife management. Since 1920, close to a million and a half acres of State Game Lands have been acquired with these funds. Each year nearly \$7,000,000 is spent to improve wildlife habitat. Habitat improvements enhance living conditions for non-game birds and mammals as well as those species which are hunted. Pennsylvania hunters willingly share these lands with the non-hunting public, and with few exceptions, State Game Lands are open for general use year round. Surveys indicate that hunting accounts for only thirty-five percent of game land usage. The remaining sixty-five percent is used by the general public for non-hunting purposes.

“Working Together for Wildlife” is a Game Commission program providing everyone an opportunity to help support wildlife management in the areas for endangered and non-game animals. Monies derived from the “Working Together for Wildlife” Program are being used in Pennsylvania to re-introduce the osprey, river otter, bald eagle, peregrine falcon and provide habitat for other birds and mammals indigenous to the Commonwealth. Construction placement of blue bird houses on State Game Lands provides needed homes for this beautiful songbird. Islands in the Susquehanna River have been set aside as propagations areas for non-game shore birds. Numerous other projects are planned on State Game Lands and other public properties which will also provide food and habitat for non-game wildlife.

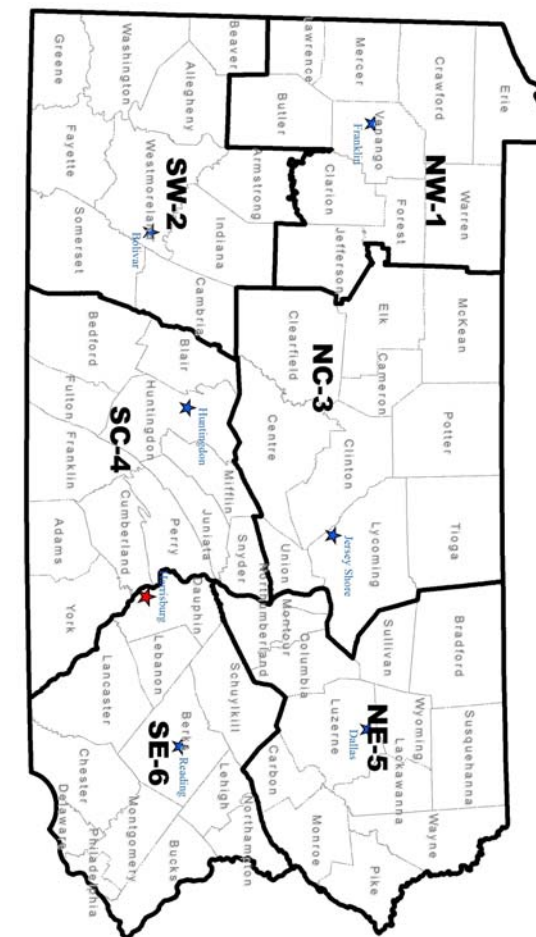
The future of Pennsylvania’s wildlife resources requires the concern, cooperation and financial support of everyone, hunters and non-hunters alike. “Working Together for Wildlife” is the answer. Send your contributions to “Working Together for Wildlife”, 2001 Elmerton Avenue, Harrisburg, Pennsylvania 17110-9797.

State Game Lands (SGL) 127 is located in the Pennsylvania Game Commission's Northeast Region. It is in the north-west corner of Monroe County and lies in Coolbaugh and Tobyhanna Townships. State Game Lands 127 encompasses much of the land area north of SR 940, west of I-380, and south of the Lehigh River. The large tract is transected by SR 423. It is predominately forested with mixed hardwoods including sugar maple, red maple, American beech, black cherry, with lesser components of hemlock, black birch, grey birch, and aspen. Topography consists of slightly undulating upland terrain with elevations ranging from 1,700 to 2,000 feet.

There are two PGC roads open to public travel on SGL 127. Brady's Lake Road travels north from 940 to a high use parking area at the Brady's Lake dam. The portion of Plank Road south of the Lehigh River, within the SGL boundary is also currently open to public use. 7-Mile Road, which travels north from SR 423 to Coolbaugh Road, is open to the public during major hunting seasons. Additionally, state routes 423 and 380 provide year user access. There are 55 vehicle parking areas along these access routes. Compartment 7 can be accessed from SR 423 and Echo Lake Road, but no maintained parking areas exist on the tract.

State Game Lands 127 is located in Wildlife Management Unit 3D. Hunting opportunities include white-tailed deer, bear, turkey, grouse, and snowshoe hare. Stocking of ringneck pheasants occurs during the youth and small game seasons, and provides limited opportunities for hunting. Ring neck pheasants are stocked in areas of the old Rausher farmstead, and the backside of Brady's Lake. Furtaking opportunities include beaver, raccoon, gray fox, coyote, and mink. The size of this game lands provides unique opportunities to remotely hunt and trap with little human contact.

In addition to hunting and furtaking. The rifle range is a very popular place for vacationers visiting the Pocono Region. In the past there have been cross country skiing trails located between Brady's Lake Rd and 7 Mile Rd that a local club maintained annually. Many of the wetlands provide abundant blueberry crops during the summer months. Overall, this Game Lands provides lots of recreational opportunities, with its many interior roads, trails, and wetlands it has become a very popular place for people to spend free time. There is a handicap ATV access near Brady's Lake available during the hunting seasons.



- |                                                                      |                                                                        |                                                                                   |                                                                                   |                                                                     |                                                                          |                                                                          |
|----------------------------------------------------------------------|------------------------------------------------------------------------|-----------------------------------------------------------------------------------|-----------------------------------------------------------------------------------|---------------------------------------------------------------------|--------------------------------------------------------------------------|--------------------------------------------------------------------------|
| 6                                                                    | 5                                                                      | 4                                                                                 | 3                                                                                 | 2                                                                   | 1                                                                        | 1                                                                        |
| SOUTHEAST REGIONAL HEADQUARTERS<br>253 SNYDER RD., READING, PA 19605 | NORTHEAST REGIONAL HEADQUARTERS<br>3917 MEMORIAL HWY, DALLAS, PA 18612 | SOUTHCENTRAL REGIONAL HEADQUARTERS<br>8627 WILLIAM PENN HWY, HUNTINGDON, PA 16652 | NORTHCENTRAL REGIONAL HEADQUARTERS<br>1566 S ROUTE 44 HWY, JERSEY SHORE, PA 17740 | SOUTHWEST REGIONAL HEADQUARTERS<br>4820 ROUTE 711, BOUCAR, PA 15923 | NORTHWEST REGIONAL HEADQUARTERS<br>1509 PITTSBURG RD, FRANKLIN, PA 16323 | NORTHWEST REGIONAL HEADQUARTERS<br>1509 PITTSBURG RD, FRANKLIN, PA 16323 |
| 610-926-3136<br>610-926-3137                                         | 570-675-1143<br>570-675-1144                                           | 814-643-1831<br>814-643-1835                                                      | 570-398-4744<br>570-398-4745                                                      | 724-238-9524<br>724-238-9523                                        | 814-432-3187<br>814-432-3188                                             | 814-432-3187<br>814-432-3188                                             |

FOR FURTHER INFORMATION  
CONTACT THE FOLLOWING:

COMMONWEALTH OF PENNSYLVANIA  
PENNSYLVANIA GAME COMMISSION