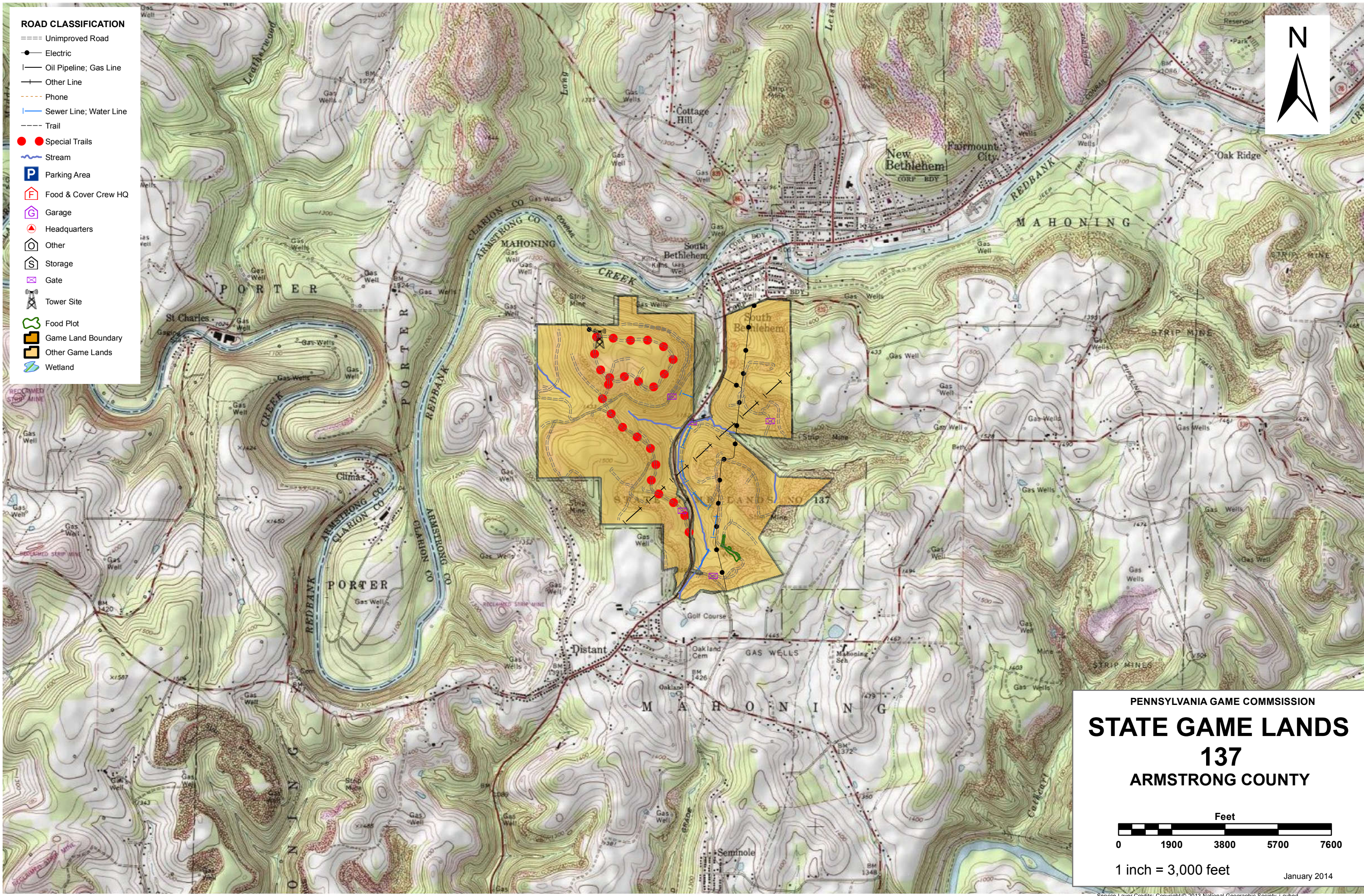


- ROAD CLASSIFICATION**
- ==== Unimproved Road
 - Electric
 - Oil Pipeline; Gas Line
 - Other Line
 - Phone
 - Sewer Line; Water Line
 - Trail
 - Special Trails
 - ~ Stream
 - P Parking Area
 - 🏠 Food & Cover Crew HQ
 - 🏠 Garage
 - 📍 Headquarters
 - 🏠 Other
 - 🏠 Storage
 - 🚪 Gate
 - 📡 Tower Site
 - 🌿 Food Plot
 - 🗡 Game Land Boundary
 - 🗡 Other Game Lands
 - 🌊 Wetland



PENNSYLVANIA GAME COMMISSION

STATE GAME LANDS

137

ARMSTRONG COUNTY

Feet

0 1900 3800 5700 7600

1 inch = 3,000 feet

January 2014

Service Layer Credits: Copyright © 2013 National Geographic Society, I-cubed

SPORTSMEN'S RECREATION MAP



STATE GAME LANDS No. 137 ARMSTRONG COUNTY

COMMONWEALTH OF PENNSYLVANIA
PENNSYLVANIA GAME COMMISSION

Each time a hunter buys a hunting license, the money he spends goes toward many facets of wildlife management. Since 1920, close to a million and a half acres of State Game Lands have been acquired with these funds. Each year nearly \$7,000,000 is spent to improve wildlife habitat. Habitat improvements enhance living conditions for non-game birds and mammals as well as those species which are hunted. Pennsylvania hunters willingly share these lands with the non-hunting public, and with few exceptions, State Game Lands are open for general use year round. Surveys indicate that hunting accounts for only thirty-five percent of game land usage. The remaining sixty-five percent is used by the general public for non-hunting purposes.

“Working Together for Wildlife” is a Game Commission program providing everyone an opportunity to help support wildlife management in the areas for endangered and non-game animals. Monies derived from the “Working Together for Wildlife” Program are being used in Pennsylvania to re-introduce the osprey, river otter, bald eagle, peregrine falcon and provide habitat for other birds and mammals indigenous to the Commonwealth. Construction placement of blue bird houses on State Game Lands provides needed homes for this beautiful songbird. Islands in the Susquehanna River have been set aside as propagations areas for non-game shore birds. Numerous other projects are planned on State Game Lands and other public properties which will also provide food and habitat for non-game wildlife.

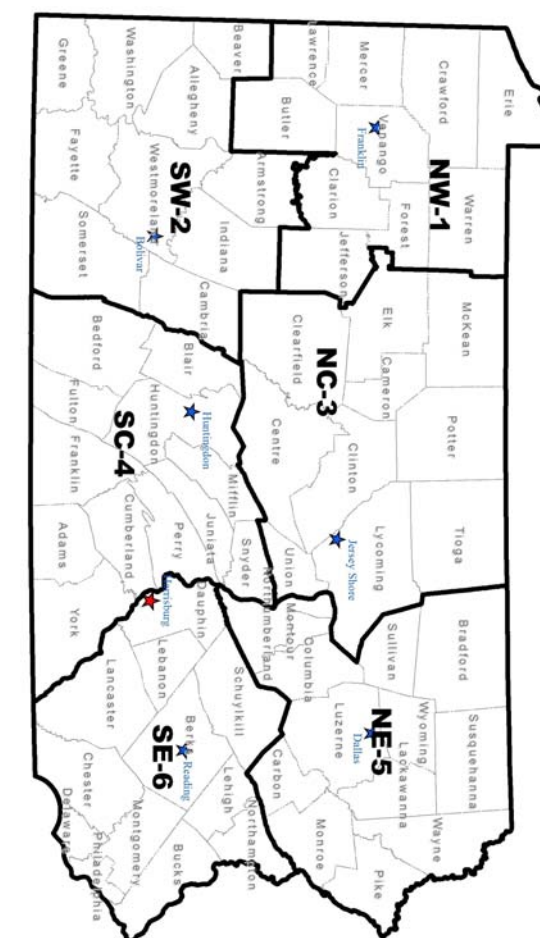
The future of Pennsylvania’s wildlife resources requires the concern, cooperation and financial support of everyone, hunters and non-hunters alike. “Working Together for Wildlife” is the answer. Send your contributions to “Working Together for Wildlife”, 2001 Elmerton Avenue, Harrisburg, Pennsylvania 17110-9797.

State Game Lands (SGL) 137 is located in Mahoning Township in Armstrong County and is in Wildlife Management Unit (WMU) 2D, and currently consists of 1,134.79 acres. The tributaries present on SGL 137 are all classified as cold water fisheries (CWF) and empty into either Redbank Creek or Mahoning Creek which in turn drain into the Allegheny River. The Allegheny River then continues to drain all water into the Ohio River Basin.

SGL 137 is divided in half by State Route (SR) 28/66 and bounded on its southwestern edge by Pheasant Farm Road and Bostonia Country Club. Dayton Rd (SR 839) borders a portion of the northeast corner and Kellersburg Rd. (TR 884) borders a portion of the northwest edge. The PGC currently maintains three public parking areas on SGL 137. There are seven miles of maintained administrative roads throughout SGL 137, providing for public access to this area by foot. All roads are currently closed year-round to public motor vehicle traffic and access is controlled with five locked gates. The gated roads and ROW provide access for hunters and avenues for hiking, wildlife photography and bird-watching. There are no designated trails for horseback riding or mountain biking, nor are there designated snowmobiling routes.

Hunting and furtaking opportunities include white-tailed deer, bear, turkey, ruffed grouse, and squirrel. Furtaking opportunities include raccoon, coyote, red fox, gray fox, mink, and bobcat. No stocking of ring-necked pheasant occurs on the SGL 137. There is no realistic opportunity for the harvest of beaver or muskrat.

The habitat management goal for SGL 137 is to maintain mixed succession conditions with a focus on practices that favor habitat requirements for the game species white-tailed deer and ruffed grouse. Hunting for these species as well as for bears, turkeys and squirrels is popular in this area. Prominent furtaking opportunities include raccoon and red fox. Focusing on these game species coincides well with the non-game focus for SGL 137 – improving early successional habitat within aspen stands, and maintaining interior forest conditions as well as the forested riparian zones. The terrain of SGL 137 should be conducive to these management priorities, as many areas are considered limited opportunity areas or special habitat areas in the context of commercial forestry.



- | | | |
|---|---|------------------------------|
| 6 | SOUTHEAST REGIONAL HEADQUARTERS
253 SNYDER RD., READING, PA 19605 | 610-926-3136
610-926-3137 |
| 5 | NORTHEAST REGIONAL HEADQUARTERS
3917 MEMORIAL HWY, DALLAS, PA 18612 | 570-675-1143
570-675-1144 |
| 4 | SOUTHCENTRAL REGIONAL HEADQUARTERS
8627 WILLIAM PENN HWY, HUNTINGDON, PA 16652 | 814-643-1831
814-643-1835 |
| 3 | NORTHCENTRAL REGIONAL HEADQUARTERS
1566 S ROUTE 44 HWY, JERSEY SHORE, PA 17740 | 570-398-4744
570-398-4745 |
| 2 | SOUTHWEST REGIONAL HEADQUARTERS
4820 ROUTE 711, BOULCAR, PA 15923 | 724-238-9523
724-238-9524 |
| 1 | NORTHWEST REGIONAL HEADQUARTERS
1509 PITTSBURG RD, FRANKLIN, PA 16323 | 814-432-3187
814-432-3188 |

FOR FURTHER INFORMATION
CONTACT THE FOLLOWING: