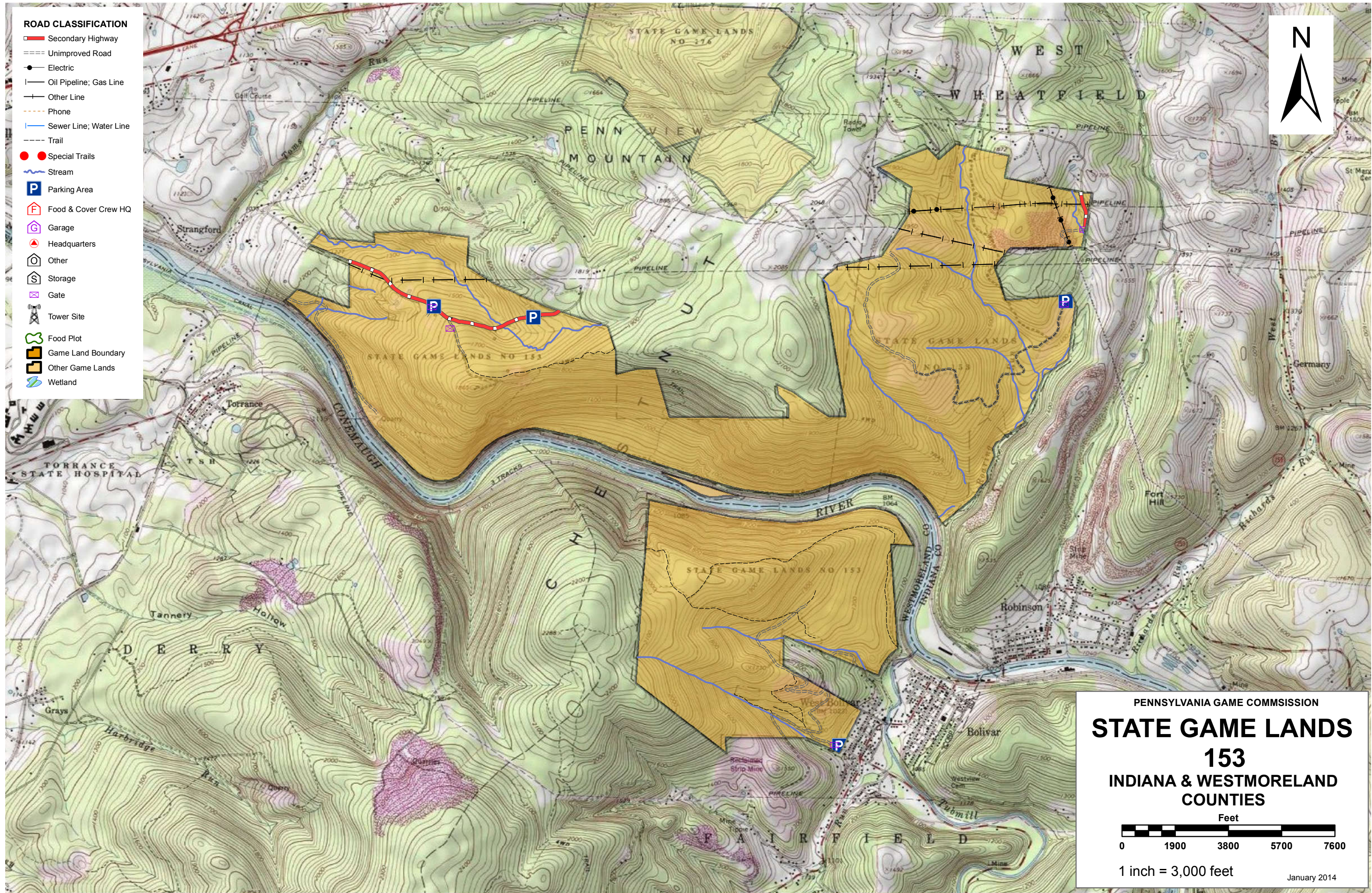


- ROAD CLASSIFICATION**
- Secondary Highway
 - Unimproved Road
 - Electric
 - Oil Pipeline; Gas Line
 - Other Line
 - Phone
 - Sewer Line; Water Line
 - Trail
 - Special Trails
 - Stream
 - Parking Area
 - Food & Cover Crew HQ
 - Garage
 - Headquarters
 - Other
 - Storage
 - Gate
 - Tower Site
 - Food Plot
 - Game Land Boundary
 - Other Game Lands
 - Wetland



PENNSYLVANIA GAME COMMISSION

STATE GAME LANDS 153

INDIANA & WESTMORELAND COUNTIES

Feet

1 inch = 3,000 feet

January 2014

Service Layer Credits: Copyright © 2013 National Geographic Society, I-cubed



SPORTSMEN'S RECREATION MAP



STATE GAME LANDS No. 153 INDIANA & WESTMORELAND COUNTIES

Each time a hunter buys a hunting license, the money he spends goes toward many facets of wildlife management. Since 1920, close to a million and a half acres of State Game Lands have been acquired with these funds. Each year nearly \$7,000,000 is spent to improve wildlife habitat. Habitat improvements enhance living conditions for non-game birds and mammals as well as those species which are hunted. Pennsylvania hunters willingly share these lands with the non-hunting public, and with few exceptions, State Game Lands are open for general use year round. Surveys indicate that hunting accounts for only thirty-five percent of game land usage. The remaining sixty-five percent is used by the general public for non-hunting purposes.

“Working Together for Wildlife” is a Game Commission program providing everyone an opportunity to help support wildlife management in the areas for endangered and non-game animals. Monies derived from the “Working Together for Wildlife” Program are being used in Pennsylvania to re-introduce the osprey, river otter, bald eagle, peregrine falcon and provide habitat for other birds and mammals indigenous to the Commonwealth. Construction placement of blue bird houses on State Game Lands provides needed homes for this beautiful songbird. Islands in the Susquehanna River have been set aside as propagations areas for non-game shore birds. Numerous other projects are planned on State Game Lands and other public properties which will also provide food and habitat for non-game wildlife.

The future of Pennsylvania’s wildlife resources requires the concern, cooperation and financial support of everyone, hunters and non-hunters alike. “Working Together for Wildlife” is the answer. Send your contributions to “Working Together for Wildlife”, 2001 Elmerton Avenue, Harrisburg, Pennsylvania 17110-9797.

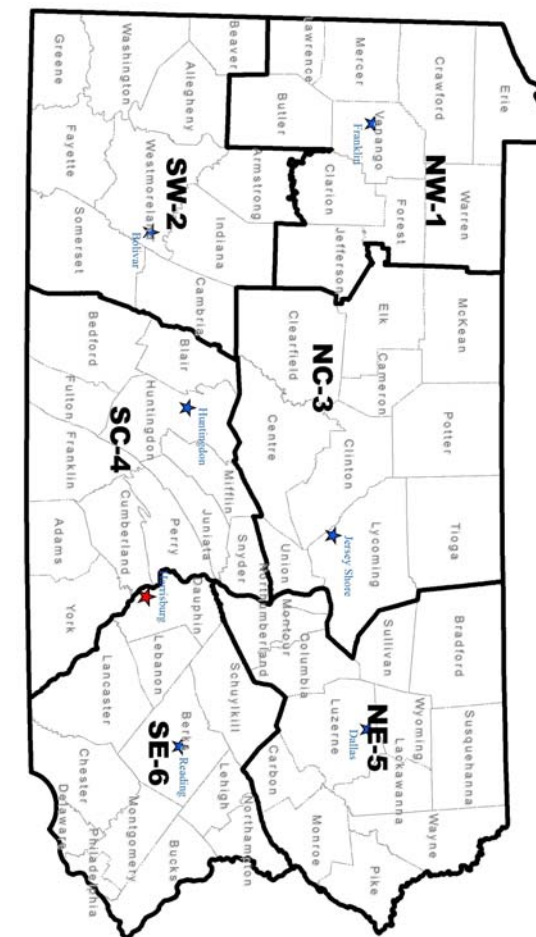
State game land 153 is located in Burrell, West Wheatfield, and Fairfield townships within Indiana and Westmoreland Counties in Wildlife Management Unit 2C, and currently has a deeded acreage of 2,941.76 acres. The Conemaugh River bisects SGL 153, and ultimately all water flows into the Ohio River Basin via the Kiskiminetas River drainage.

The Game Commission currently maintains four public parking areas on SGL 153. There are 4.8 miles of maintained administrative roads throughout SGL 153, providing for public access to this area by foot. All roads, with the exception of the PGC access road to the Roaring Run parking area, are currently closed year-round to public motor vehicle traffic and access is controlled with five locked gates. The gated roads and rights-of-way provide access for hunters and avenues for hiking, wildlife photography and bird-watching. There are two designated trails for horseback riding and mountain biking, a one-mile trail and a two-mile trail on this game land, but there are no designated snowmobiling routes.

The habitat management goal for SGL 153 is to maintain mixed succession conditions with a focus on practices that favor habitat requirements for the game species white-tailed deer and ruffed grouse. Hunting for these species as well as for bears, turkeys and squirrels is popular in this area. Prominent furtaking opportunities include raccoon and red fox. The non-game mammal species of interest on SGL 153 is the Allegheny woodrat, and small-scale habitat improvements will be implemented in areas with active and potential woodrat activity centers. Strangford cave is a known bat hibernaculum, and will remain gated to prevent people from entering for the foreseeable future in an effort to prevent contamination by the fungus associated with the highly lethal bat disease white-nose syndrome.

Additional emphasis will be on moving the oak forest types to an older age-class, and enhancing the unique habitat provided by the riparian buffer and the hemlock forest stands for the nongame bird and mammal species of concern that utilize these habitat types. Finally, consideration will be given to reverting the acres of reclaimed strip-mines back to grassland for the benefit of the many grassland bird species identified in the Pennsylvania Breeding Bird Atlas. Such habitat modification requires intensive effort and regular maintenance and will proceed only if funding sources become available before the area reverts completely to forest species.

Generally, silvicultural approaches to achieve management goals include even-aged management. Some uneven-aged selection cuts will be used to enhance microhabitat in the area through the creation of coarse woody debris. Conifers will be planted to enhance this forest component and to provide additional winter thermal cover. Herbaceous openings will be maintained in legume and legume/mix vegetation, maximizing soil-defined growth potential on this SGL. Ultimately, the long-term strategy for herbaceous openings will be a minimal maintenance approach, planting multi-season and perennial forbs and providing for early succession habitat in border areas.



- 1 NORTHWEST REGIONAL HEADQUARTERS
1509 PITTSBURG RD, FRANKLIN, PA 16323
- 2 SOUTHWEST REGIONAL HEADQUARTERS
4820 ROUTE 711, BOULCAR, PA 15923
- 3 NORTHCENTRAL REGIONAL HEADQUARTERS
1566 S ROUTE 44 HWY, JERSEY SHORE, PA 17740
- 4 SOUTHCENTRAL REGIONAL HEADQUARTERS
8627 WILLIAM PENN HWY, HUNTINGDON, PA 16652
- 5 NORTHEAST REGIONAL HEADQUARTERS
3917 MEMORIAL HWY, DALLAS, PA 18612
- 6 SOUTHEAST REGIONAL HEADQUARTERS
253 SNYDER RD, READING, PA 19605

FOR FURTHER INFORMATION
CONTACT THE FOLLOWING:

- 814-432-3187
- 814-432-3188
- 724-238-9523
- 724-238-9524
- 570-398-4744
- 570-398-4745
- 814-643-1831
- 814-643-1835
- 570-675-1143
- 570-675-1144
- 610-926-3136
- 610-926-3137

COMMONWEALTH OF PENNSYLVANIA
PENNSYLVANIA GAME COMMISSION