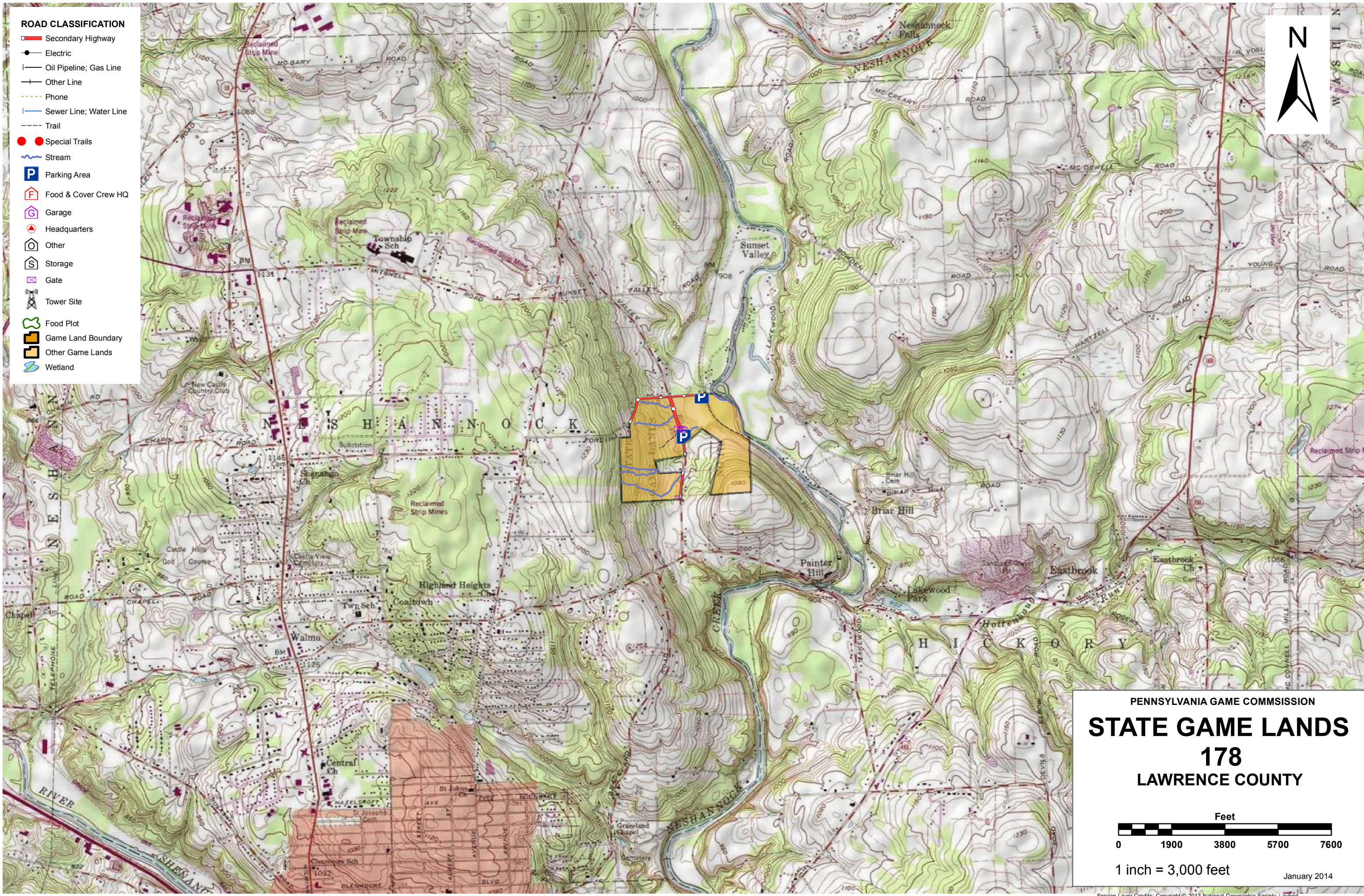


- ROAD CLASSIFICATION**
- Secondary Highway
 - Electric
 - Oil Pipeline; Gas Line
 - Other Line
 - Phone
 - Sewer Line; Water Line
 - Trail
 - Special Trails
 - Stream
 - Parking Area
 - Food & Cover Crew HQ
 - Garage
 - Headquarters
 - Other
 - Storage
 - Gate
 - Tower Site
 - Food Plot
 - Game Land Boundary
 - Other Game Lands
 - Wetland



PENNSYLVANIA GAME COMMISSION

STATE GAME LANDS

178

LAWRENCE COUNTY

Feet

0 1900 3800 5700 7600

1 inch = 3,000 feet

January 2014

Service Layer Credits: Copyright © 2013 National Geographic Society, I-cubed



SPORTSMEN'S RECREATION MAP



STATE GAME LANDS No. 178 LAWRENCE COUNTY

Each time a hunter buys a hunting license, the money he spends goes toward many facets of wildlife management. Since 1920, close to a million and a half acres of State Game Lands have been acquired with these funds. Each year nearly \$7,000,000 is spent to improve wildlife habitat. Habitat improvements enhance living conditions for non-game birds and mammals as well as those species which are hunted. Pennsylvania hunters willingly share these lands with the non-hunting public, and with few exceptions, State Game Lands are open for general use year round. Surveys indicate that hunting accounts for only thirty-five percent of game land usage. The remaining sixty-five percent is used by the general public for non-hunting purposes.

“Working Together for Wildlife” is a Game Commission program providing everyone an opportunity to help support wildlife management in the areas for endangered and non-game animals. Monies derived from the “Working Together for Wildlife” Program are being used in Pennsylvania to re-introduce the osprey, river otter, bald eagle, peregrine falcon and provide habitat for other birds and mammals indigenous to the Commonwealth. Construction placement of blue bird houses on State Game Lands provides needed homes for this beautiful songbird. Islands in the Susquehanna River have been set aside as propagations areas for non-game shore birds. Numerous other projects are planned on State Game Lands and other public properties which will also provide food and habitat for non-game wildlife.

The future of Pennsylvania’s wildlife resources requires the concern, cooperation and financial support of everyone, hunters and non-hunters alike. “Working Together for Wildlife” is the answer. Send your contributions to “Working Together for Wildlife”, 2001 Elmerton Avenue, Harrisburg, Pennsylvania 17110-9797.

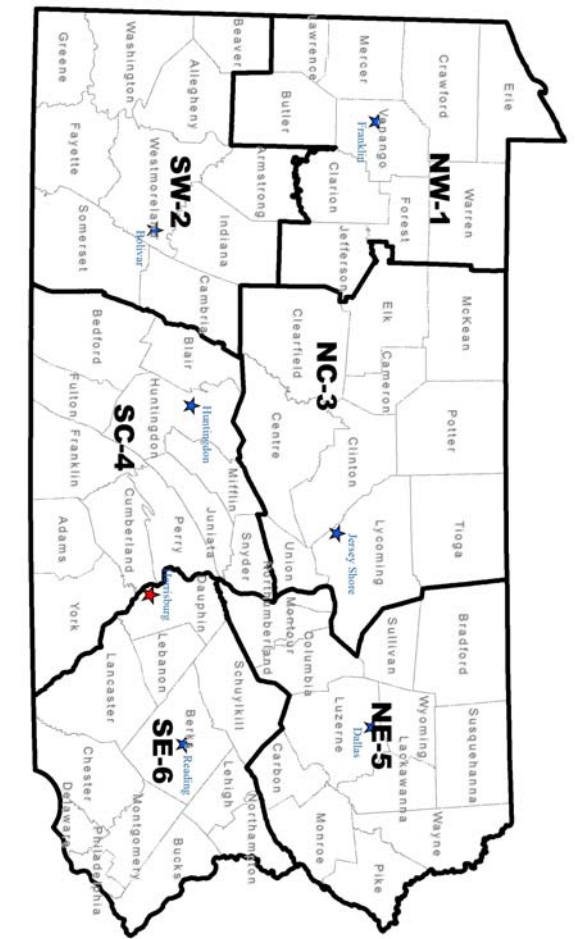
State Game Land 178 is a single contiguous tract of approximately 165 acres in rural, northern Lawrence County. The SGL is located in Neshannock Township, in the Pennsylvania Game Commission's Northwest Region (Wildlife Management Unit 1A). The land purchase was made in 1940.

The game land is easily accessed, located east of SR 18, it is bisected west to east by Valley Road (T 462) and the northern boundary lies along Sunrise Drive (T 551). Two parking lots are maintained and foot travel is welcome on 1.6 miles of gated roads. The SGL contains .7 mile of abandoned Penn Central RR grade. The farthest interior point from a parking area or gate is .36 miles.

SGL 178 is 79% forested, with the majority of the forest cover being northern hardwoods. The remaining forest habitat types are listed according to percent of coverage: tuliptree-beech-maple, black cherry – northern hardwood, red oak – mixed hardwoods, miscellaneous palustrine/floodplain forest, spruce plantations, red maple and mixed hardwood palustrine woodland. Topography varies from level to gently rolling, which permits management access to all of the game land. Elevation varies from 1,135 feet above sea level in the western section of the SGL to 900 feet above sea level near Neshannock Creek which is a stocked trout fishery.

The mixed successional habitat conditions on the SGL provide good hunting and furtaking opportunities. Depending on the season, pressure varies from light to moderate. The principle species hunted are white-tailed deer and eastern wild turkey. Fox squirrels are hunted to a lesser extent where appropriate habitat exists. Furbearer trapping opportunities include raccoon, red and gray fox, and eastern coyote. There is limited pheasant stocking on this SGL.

Hiking, bird watching and cross-country skiing are lawful recreational activities that occur occasionally on the SGL. All roads are closed year-round to public motor vehicle traffic.



- | | | |
|---|---|------------------------------|
| 6 | SOUTHEAST REGIONAL HEADQUARTERS
253 SNYDER RD., READING, PA 19605 | 610-926-3136
610-926-3137 |
| 5 | NORTHEAST REGIONAL HEADQUARTERS
3917 MEMORIAL HWY, DALLAS, PA 18612 | 570-675-1143
570-675-1144 |
| 4 | SOUTHCENTRAL REGIONAL HEADQUARTERS
8627 WILLIAM PENN HWY, HUNTINGDON, PA 16652 | 814-643-1831
814-643-1835 |
| 3 | NORTHCENTRAL REGIONAL HEADQUARTERS
1566 S ROUTE 44 HWY, JERSEY SHORE, PA 17740 | 570-398-4744
570-398-4745 |
| 2 | SOUTHWEST REGIONAL HEADQUARTERS
4820 ROUTE 711, BOULCAR, PA 15923 | 724-238-9523
724-238-9524 |
| 1 | NORTHWEST REGIONAL HEADQUARTERS
1509 PITTSBURG RD, FRANKLIN, PA 16323 | 814-432-3187
814-432-3188 |

FOR FURTHER INFORMATION
CONTACT THE FOLLOWING:

COMMONWEALTH OF PENNSYLVANIA
PENNSYLVANIA GAME COMMISSION