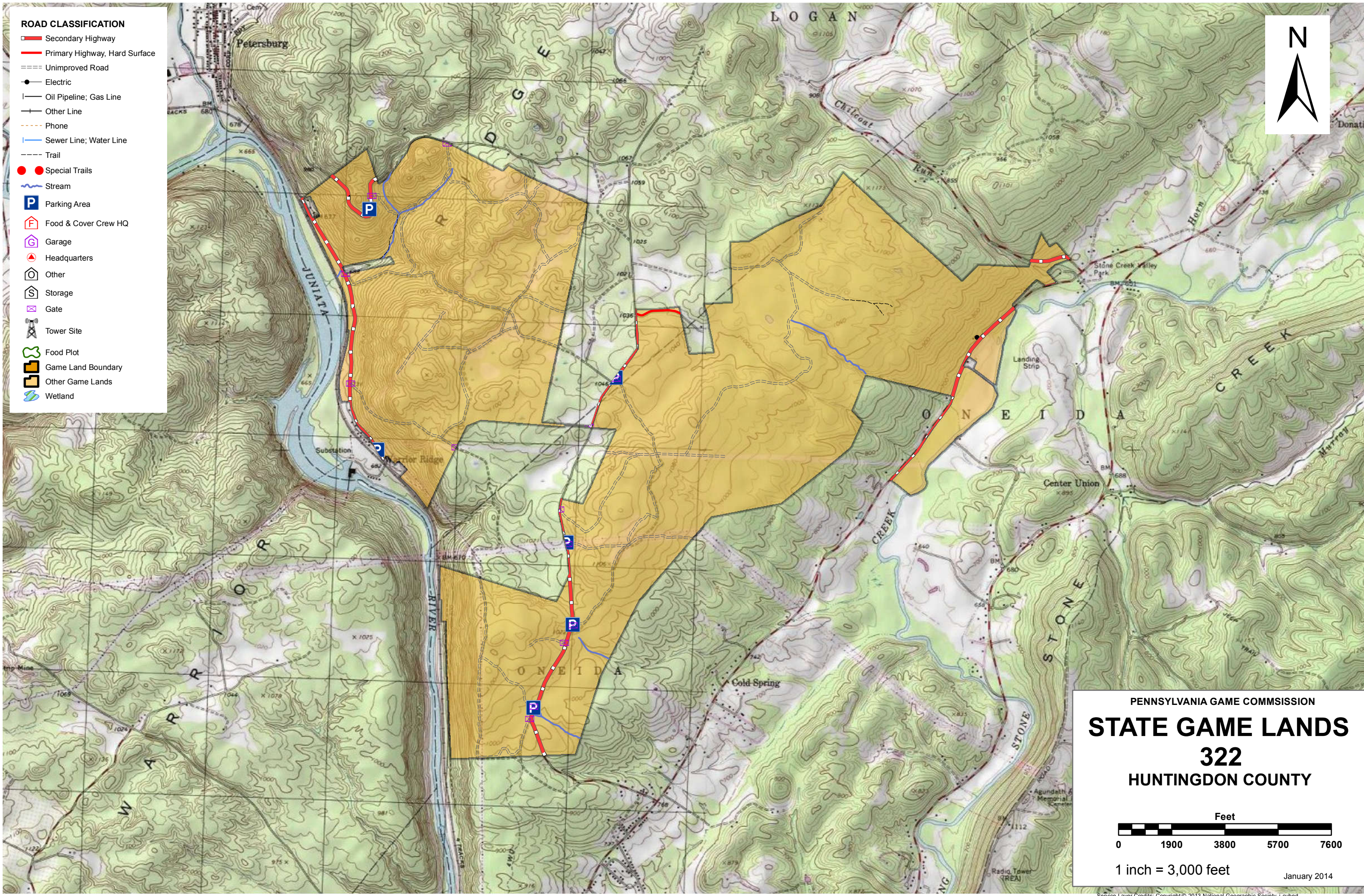


- ROAD CLASSIFICATION**
- Secondary Highway
 - Primary Highway, Hard Surface
 - Unimproved Road
 - Electric
 - Oil Pipeline; Gas Line
 - Other Line
 - Phone
 - Sewer Line; Water Line
 - Trail
 - Special Trails
 - Stream
 - Parking Area
 - Food & Cover Crew HQ
 - Garage
 - Headquarters
 - Other
 - Storage
 - Gate
 - Tower Site
 - Food Plot
 - Game Land Boundary
 - Other Game Lands
 - Wetland



PENNSYLVANIA GAME COMMISSION

STATE GAME LANDS

322

HUNTINGDON COUNTY

Feet

0 1900 3800 5700 7600

1 inch = 3,000 feet

January 2014

Service Layer Credits: Copyright © 2013 National Geographic Society, I-cubed



SPORTSMEN'S RECREATION MAP



STATE GAME LANDS No. 322 HUNTINGDON COUNTY

Each time a hunter buys a hunting license, the money he spends goes toward many facets of wildlife management. Since 1920, close to a million and a half acres of State Game Lands have been acquired with these funds. Each year nearly \$7,000,000 is spent to improve wildlife habitat. Habitat improvements enhance living conditions for non-game birds and mammals as well as those species which are hunted. Pennsylvania hunters willingly share these lands with the non-hunting public, and with few exceptions, State Game Lands are open for general use year round. Surveys indicate that hunting accounts for only thirty-five percent of game land usage. The remaining sixty-five percent is used by the general public for non-hunting purposes.

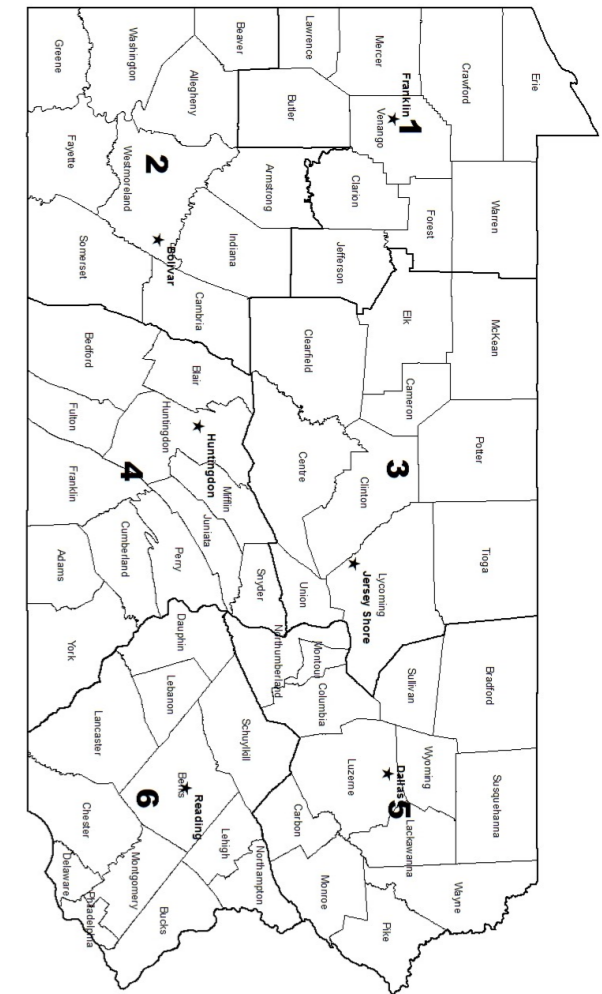
“Working Together for Wildlife” is a Game Commission program providing everyone an opportunity to help support wildlife management in the areas for endangered and non-game animals. Monies derived from the “Working Together for Wildlife” Program are being used in Pennsylvania to re-introduce the osprey, river otter, bald eagle, peregrine falcon and provide habitat for other birds and mammals indigenous to the Commonwealth. Construction placement of blue bird houses on State Game Lands provides needed homes for this beautiful songbird. Islands in the Susquehanna River have been set aside as propagations areas for non-game shore birds. Numerous other projects are planned on State Game Lands and other public

State Game Lands No. 322 (SGL 322) consists of two tracts totaling 2,863.773 surveyed acres. The two tracts are located in Logan (1,240.418 acres) and Oneida (1,623.355 acres) townships, Huntingdon County.

Located in the Appalachian mountain section of the ridge-and-valley physiographic province, SGL 322 is situated primarily on Warrior Ridge and consists largely of, and is surrounded by, contiguous, upland, deciduous forest types, with the Juniata River forming a natural, western boundary. The eastern portion of the game lands is gently rolling woodland, broken by numerous small drainages. The western portion of the game lands includes steep hollows and hilly terrain along Warrior Ridge. Elevations on this game lands range from approximately 680 feet above mean sea level along the Juniata River to 1,200 feet on Warrior Ridge.

Public access to the southern and eastern portion of SGL 322 is excellent. Just north of Huntingdon, the Petersburg Pike (State Route 4007) bisects Compartment 1 and is adjacent to approximately 0.7 miles of Compartment 2. Access to Compartment 3 is available from much of Warrior Ridge Road (Township Route 492) along the western boundary, and from the Petersburg Pike at locations along the northern boundary and one site on the eastern boundary. Several PGC parking areas, wide berms, and a complex of administrative roads facilitate pedestrian access to the interior of all compartments. Availability of parking areas is limited to two points in Compartment 3 along the Petersburg Pike. Boundary lines are well marked and in good condition, and serve to orient SGL users.

Historic and recent hunting effort has been directed primarily toward white-tailed deer, although hunters pursue black bear and wild turkey, with lesser effort expended on ruffed grouse and gray squirrel. Hunting objectives remain the same at present for most SGL users. Trapping and fur-taking activities are light. Additional recreational uses and opportunities on SGL 322 include birding, hiking, cross-country skiing, nature study, and outdoor photography. Two administrative road sections totaling 4.3 miles are available as PGC "designated routes" for use by horseback riders and bicyclists, subject to game lands regulations.



- 1** NORTHWEST REGIONAL HEADQUARTERS
H K, FRANKLIN, PA 16323
814-432-3187
- 2** SOUTHWEST REGIONAL HEADQUARTERS
4820 ROUTE 711, BOLICAR, PA 15923
724-238-9523
- 3** NORTHCENTRAL REGIONAL HEADQUARTERS
OK = , JERSEY SHORE, PA 17740
570-398-4744
- 4** SOUTHCENTRAL REGIONAL HEADQUARTERS
8627 WILLIAM PENN HWY, HUNTINGDON, PA 16652
814-643-1831
- 5** NORTHEAST REGIONAL HEADQUARTERS
3917 MEMORIAL HWY, DALLAS, PA 18612
570-675-1143
- 6** SOUTHEAST REGIONAL HEADQUARTERS
253 SNYDER RD, READING, PA 19605
610-926-3136

FOR FURTHER INFORMATION
CONTACT THE FOLLOWING: