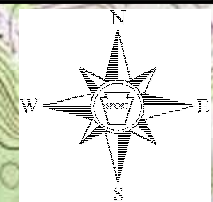


79°20'0"W

79°17'30"W

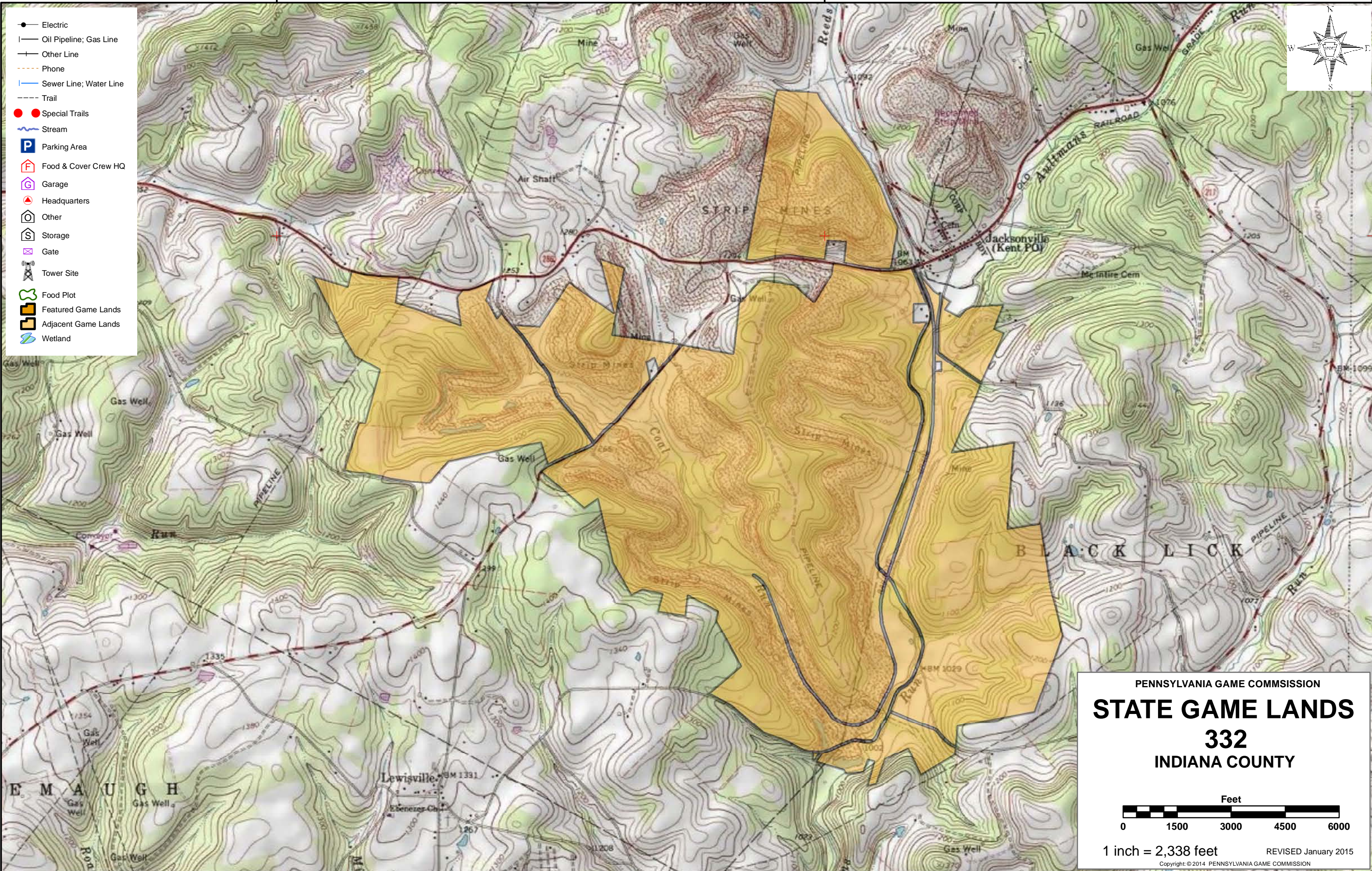
79°15'0"W

- Electric
- Oil Pipeline; Gas Line
- Other Line
- Phone
- Sewer Line; Water Line
- Trail
- Special Trails
- ~ Stream
- P Parking Area
- F Food & Cover Crew HQ
- G Garage
- ▲ Headquarters
- Other
- S Storage
- ⊞ Gate
- ⊞ Tower Site
- 🍀 Food Plot
- 🏠 Featured Game Lands
- 🏠 Adjacent Game Lands
- 🌊 Wetland



40°32'30"N

40°32'30"N



PENNSYLVANIA GAME COMMISSION

# STATE GAME LANDS

## 332

### INDIANA COUNTY

Feet

0 1500 3000 4500 6000

1 inch = 2,338 feet

REVISED January 2015

Copyright: © 2014 PENNSYLVANIA GAME COMMISSION

79°20'0"W

79°17'30"W

79°15'0"W





## SPORTSMEN'S RECREATION MAP



### STATE GAME LANDS No. 332 INDIANA COUNTY

COMMONWEALTH OF PENNSYLVANIA  
PENNSYLVANIA GAME COMMISSION

Each time a hunter buys a hunting license, the money he spends goes toward many facets of wildlife management. Since 1920, close to a million and a half acres of State Game Lands have been acquired with these funds. Each year nearly \$7,000,000 is spent to improve wildlife habitat. Habitat improvements enhance living conditions for non-game birds and mammals as well as those species which are hunted. Pennsylvania hunters willingly share these lands with the non-hunting public, and with few exceptions, State Game Lands are open for general use year round. Surveys indicate that hunting accounts for only thirty-five percent of game land usage. The remaining sixty-five percent is used by the general public for non-hunting purposes.

“Working Together for Wildlife” is a Game Commission program providing everyone an opportunity to help support wildlife management in the areas for endangered and non-game animals. Monies derived from the “Working Together for Wildlife” Program are being used in Pennsylvania to re-introduce the osprey, river otter, bald eagle, peregrine falcon and provide habitat for other birds and mammals indigenous to the Commonwealth. Construction placement of blue bird houses on State Game Lands provides needed homes for this beautiful songbird. Islands in the Susquehanna River have been set aside as propagation areas for non-game shore birds. Numerous other projects are planned on State Game Lands and other public

State Game Lands No. 332, consists of 2,284 acres, located Indiana County. The terrain is rolling and forested interspersed with herbaceous openings. Primary game species are bear, deer, turkey, and grouse.

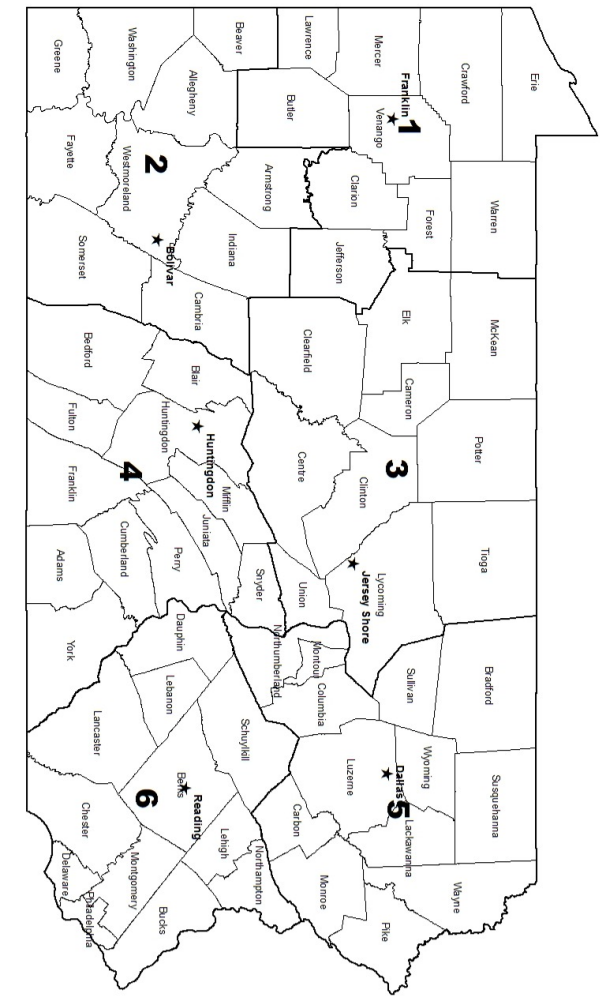
State Game Lands now totaling more than 1,492,861.20 acres are purchased, managed and maintained primarily for outdoor recreation in the form of sport-hunting.

While portions of sportsmen's license fees and taxes on sporting arms and ammunition have made the acquisition and development of these lands possible, other users are welcome. Recreation such as boating, fishing, hiking, birdwatching, and nature study is encouraged.

The Game Commission is concerned with protecting and perpetuating non-game wildlife species, along with managing for an annual harvest of all game species. While sport hunting, embracing the elements of fair chase, is the ultimate goal in wildlife management, other benefits have enhanced the quality of life for all who enjoy the out-of-doors.

For benefit of all users, please respect posted rules and regulations. Entry upon posted wildlife refuges and propagation areas is prohibited. Motorized vehicles are prohibited on gated roads and trails; snowmobiles excepted where so designated and posted.

For current conservation-sport hunting information, read the Pennsylvania Game News and visit the Pennsylvania Game Commission's home page <http://www.pgc.state.pa.us> or write to the Pennsylvania Game Commission, 2001 Elmerton Avenue, Harrisburg, PA 17110-9797.



- |          |   |                              |
|----------|---|------------------------------|
| <b>1</b> | <b>NORTHWEST REGIONAL HEADQUARTERS</b><br>Hickory, PA 16323                               | 814-432-3187<br>814-432-3188 |
| <b>2</b> | <b>SOUTHWEST REGIONAL HEADQUARTERS</b><br>4820 ROUTE 711, BOLICAR, PA 15923               | 724-238-9523<br>724-238-9524 |
| <b>3</b> | <b>NORTH CENTRAL REGIONAL HEADQUARTERS</b><br>OK, JERSEY SHORE, PA 17740                  | 570-398-4744<br>570-398-4745 |
| <b>4</b> | <b>SOUTH CENTRAL REGIONAL HEADQUARTERS</b><br>8627 WILLIAM PENN HWY, HUNTINGDON, PA 16652 | 814-643-1831<br>814-643-1835 |
| <b>5</b> | <b>NORTHEAST REGIONAL HEADQUARTERS</b><br>3917 MEMORIAL HWY, DALLAS, PA 18612             | 570-675-1143<br>570-675-1144 |
| <b>6</b> | <b>SOUTHEAST REGIONAL HEADQUARTERS</b><br>253 SNYDER RD, READING, PA 19605                | 610-926-3136<br>610-926-3137 |

FOR FURTHER INFORMATION  
CONTACT THE FOLLOWING: