



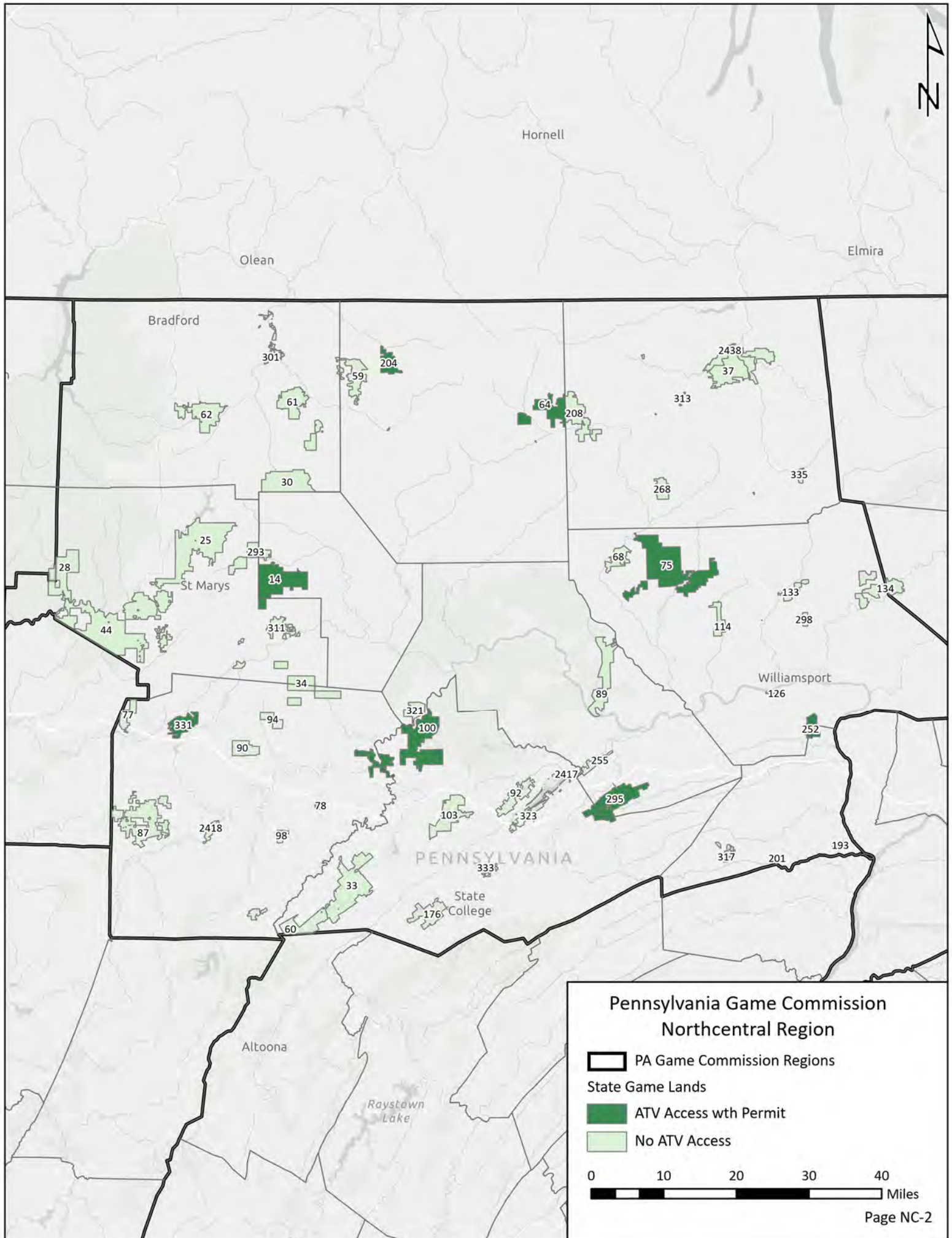
## Northcentral Region



It is unlawful to ride ATVs on state game lands, except on designated roads open for persons issued a Disabled Persons Permit, and who have a valid registration from the Department of Conservation & Natural Resources.

# Table of Contents

<b>Northcentral Region Overview Map</b> .....	NC-2	
<b>State Game Lands 14</b>	Cameron and Elk counties .....	NC-3
<b>State Game Lands 64</b>	Potter and Tioga counties .....	NC-4
<b>State Game Lands 75</b>	Lycoming County.....	NC-5
<b>State Game Lands 78</b>	Clearfield County.....	NC-6
<b>State Game Lands 100</b>	Centre and Clearfield counties .....	NC-7
<b>State Game Lands 204</b>	Potter County.....	NC-8
<b>State Game Lands 252</b>	Lycoming and Union counties.....	NC-9
<b>State Game Lands 295</b>	Centre and Clinton counties .....	NC-10
<b>State Game Lands 331</b>	Clearfield County.....	NC-11



Hornell

Olean

Elmira

Bradford

301

204

2438

37

59

61

64

208

313

62

30

268

335

25

293

14

68

75

133

134

28

St Marys

311

114

298

44

Williamsport

126

34

89

252

77

331

90

321

100

255

295

87

2418

78

2417

92

323

317

201

193

PENNSYLVANIA

State College

176

Altoona

Raystown Lake

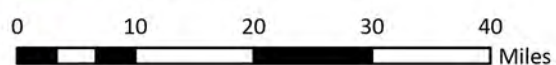
**Pennsylvania Game Commission  
Northcentral Region**

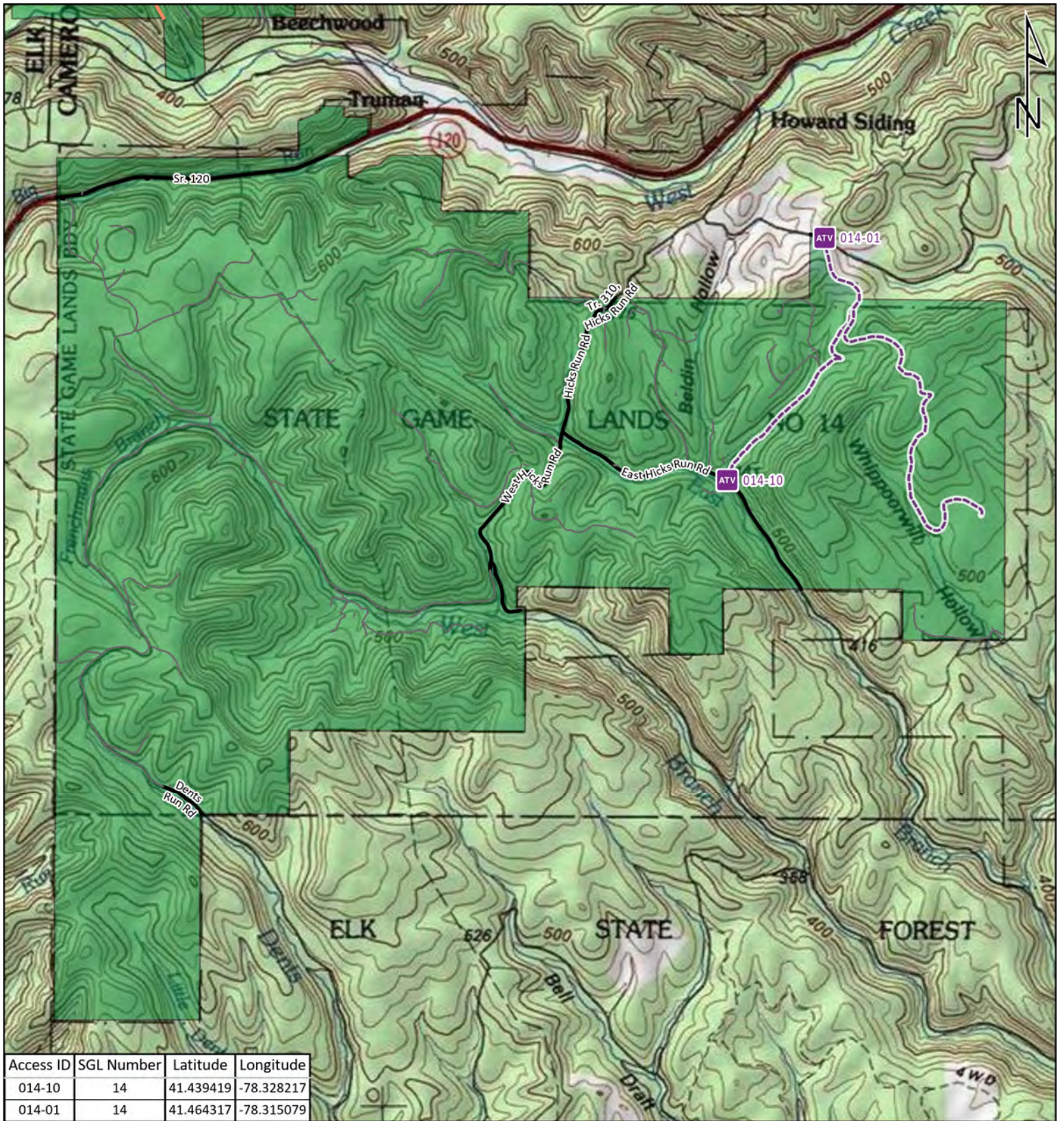
PA Game Commission Regions


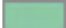
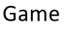




State Game Lands

ATV Access wth Permit

No ATV Access

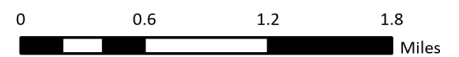
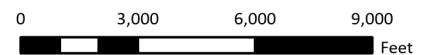




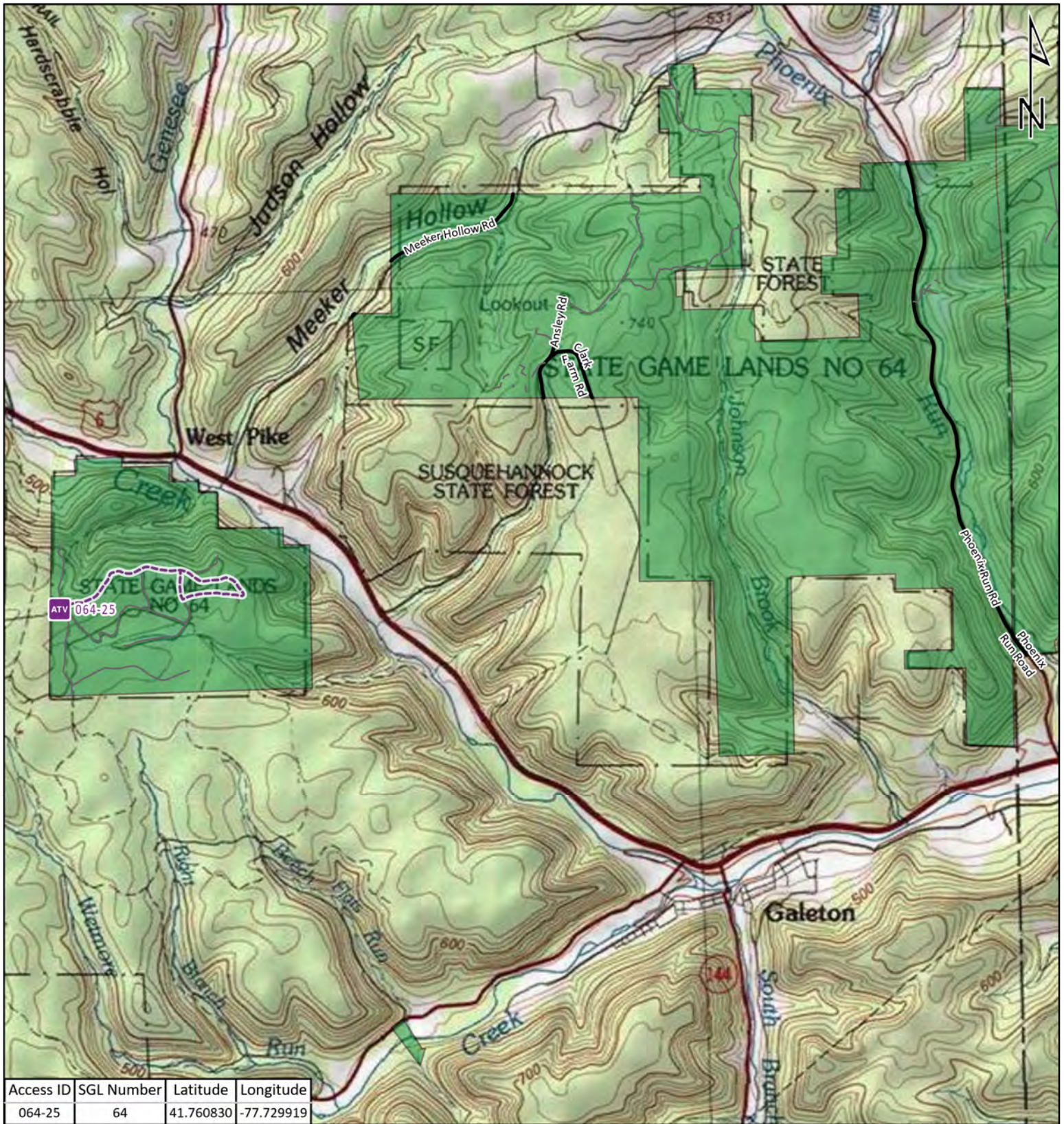
-  Disabled Hunter Access Trail Start
-  State Game Land Boundary
-  Game Land Roads
-  Roads Open to Vehicle Traffic
-  Roads Seasonally Open to Vehicle Traffic
-  Roads Closed to Vehicle Traffic
-  ATV Access with Permit



## STATE GAME LAND 14



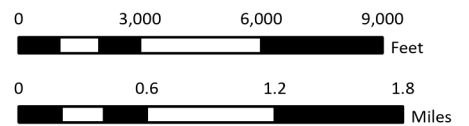
It is unlawful to ride ATV's on state game lands, except on designated roads open for persons issued a Disabled Person Permit, and who have a valid registration from the Department of Conservation & Natural Resources.



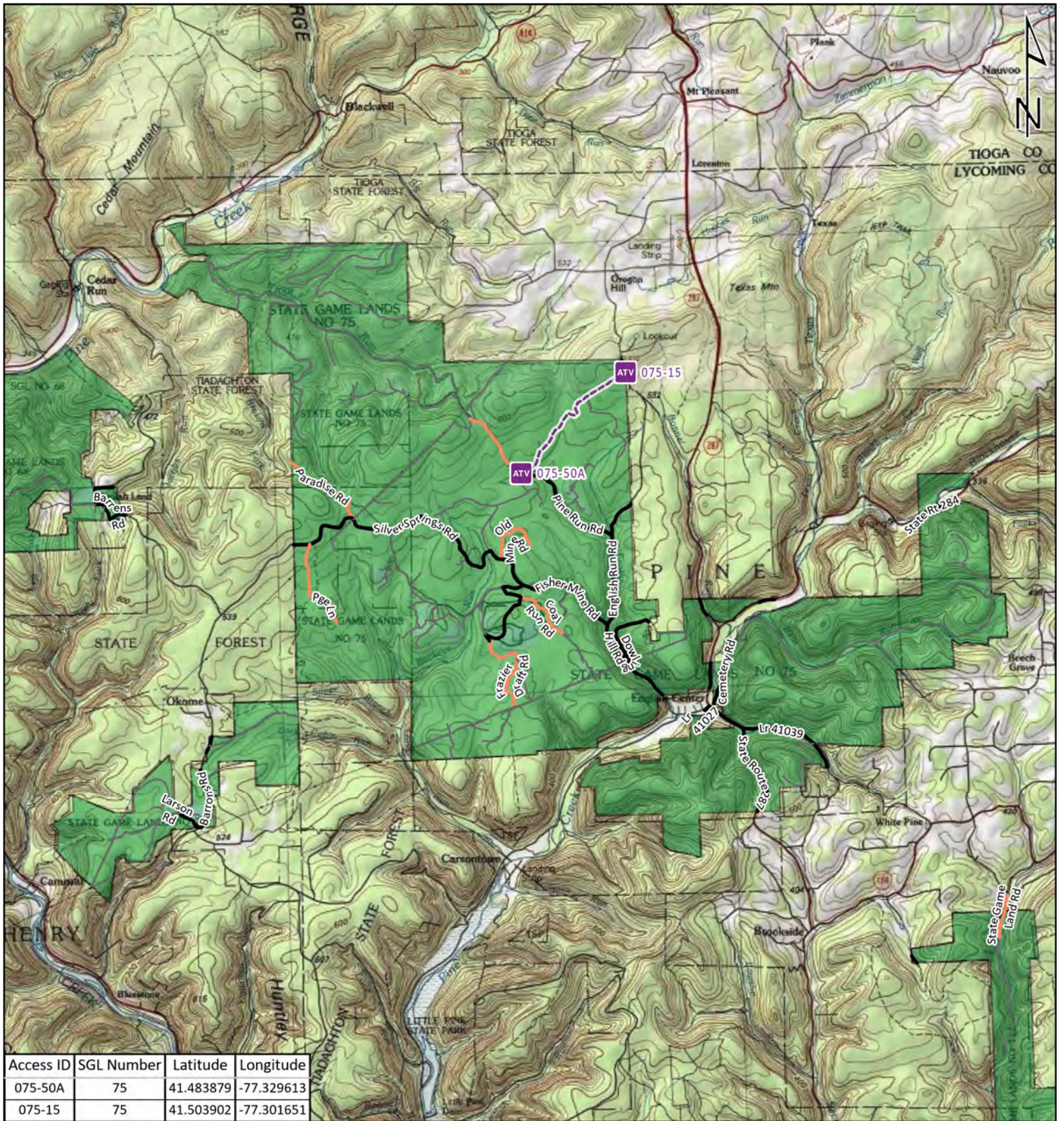
- Disabled Hunter Access Trail Start
- State Game Land Boundary
- Game Land Roads
- Roads Open to Vehicle Traffic
- Roads Seasonally Open to Vehicle Traffic
- Roads Closed to Vehicle Traffic
- ATV Access with Permit


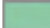







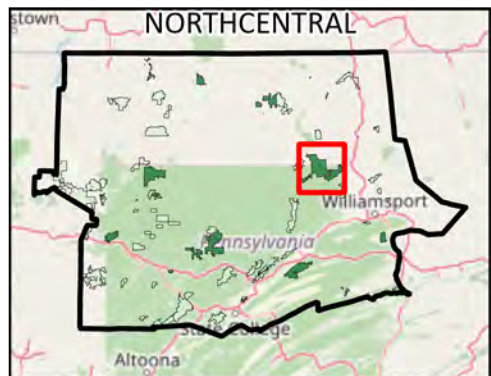
## STATE GAME LAND 64



It is unlawful to ride ATV's on state game lands, except on designated roads open for persons issued a Disabled Person Permit, and who have a valid registration from the Department of Conservation & Natural Resources.



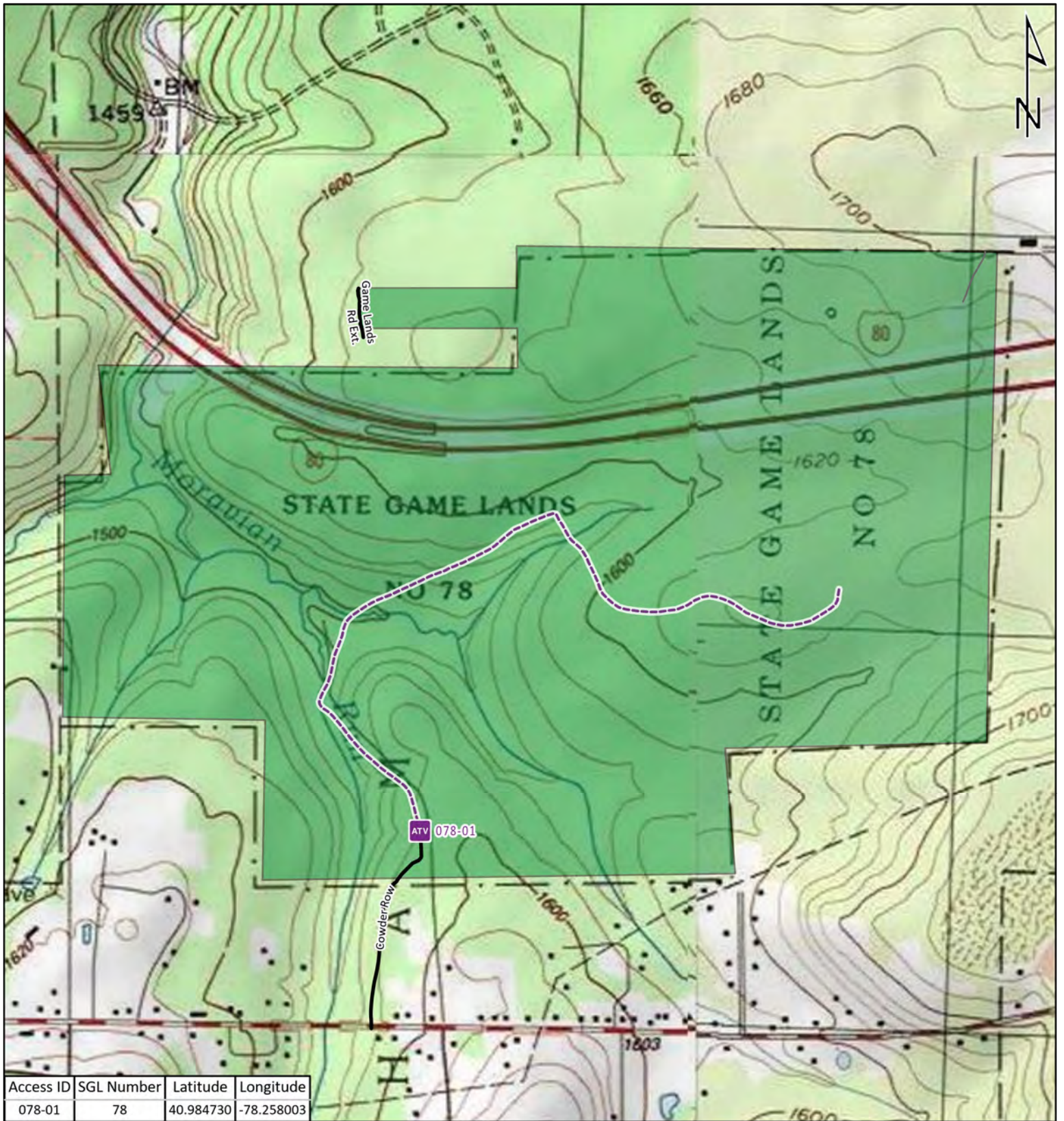
-  Disabled Hunter Access Trail Start
-  State Game Land Boundary
-  Game Land Roads
-  Roads Open to Vehicle Traffic
-  Roads Seasonally Open to Vehicle Traffic
-  Roads Closed to Vehicle Traffic
-  ATV Access with Permit




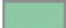
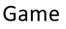




## STATE GAME LAND 75



It is unlawful to ride ATV's on state game lands, except on designated roads open for persons issued a Disabled Person Permit, and who have a valid registration from the Department of Conservation & Natural Resources.

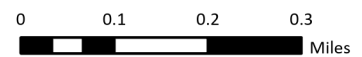
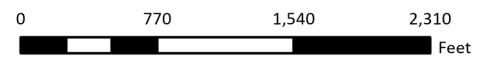


Access ID	SGL Number	Latitude	Longitude
078-01	78	40.984730	-78.258003

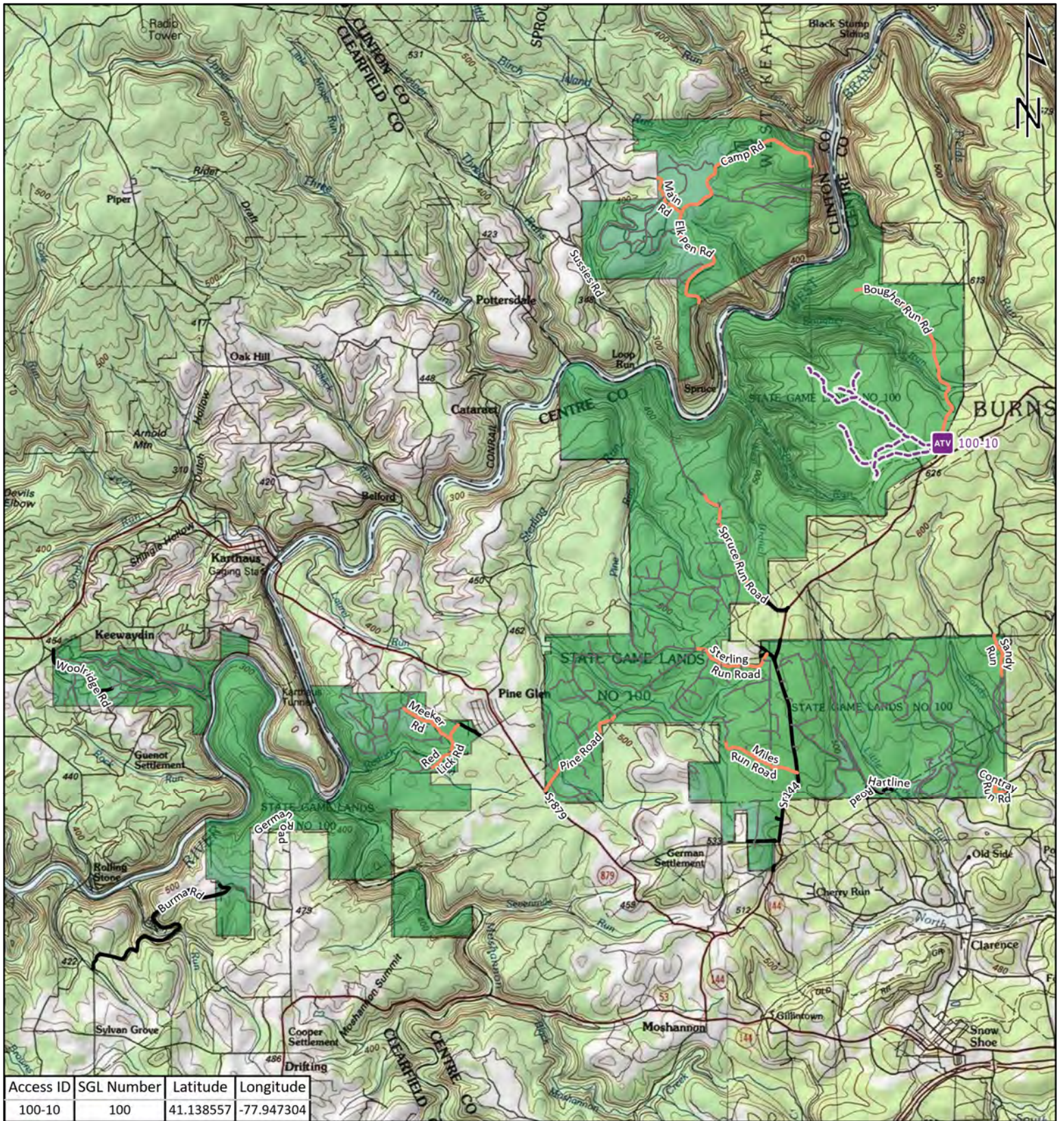
-  Disabled Hunter Access Trail Start
-  State Game Land Boundary
-  Game Land Roads
-  Roads Open to Vehicle Traffic
-  Roads Seasonally Open to Vehicle Traffic
-  Roads Closed to Vehicle Traffic
-  ATV Access with Permit










## STATE GAME LAND 78



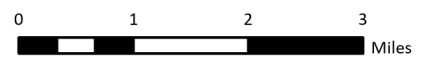
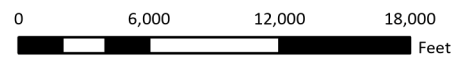
It is unlawful to ride ATV's on state game lands, except on designated roads open for persons issued a Disabled Person Permit, and who have a valid registration from the Department of Conservation & Natural Resources.



-  Disabled Hunter Access Trail Start
-  State Game Land Boundary
-  Game Land Roads
-  Roads Open to Vehicle Traffic
-  Roads Seasonally Open to Vehicle Traffic
-  Roads Closed to Vehicle Traffic
-  ATV Access with Permit

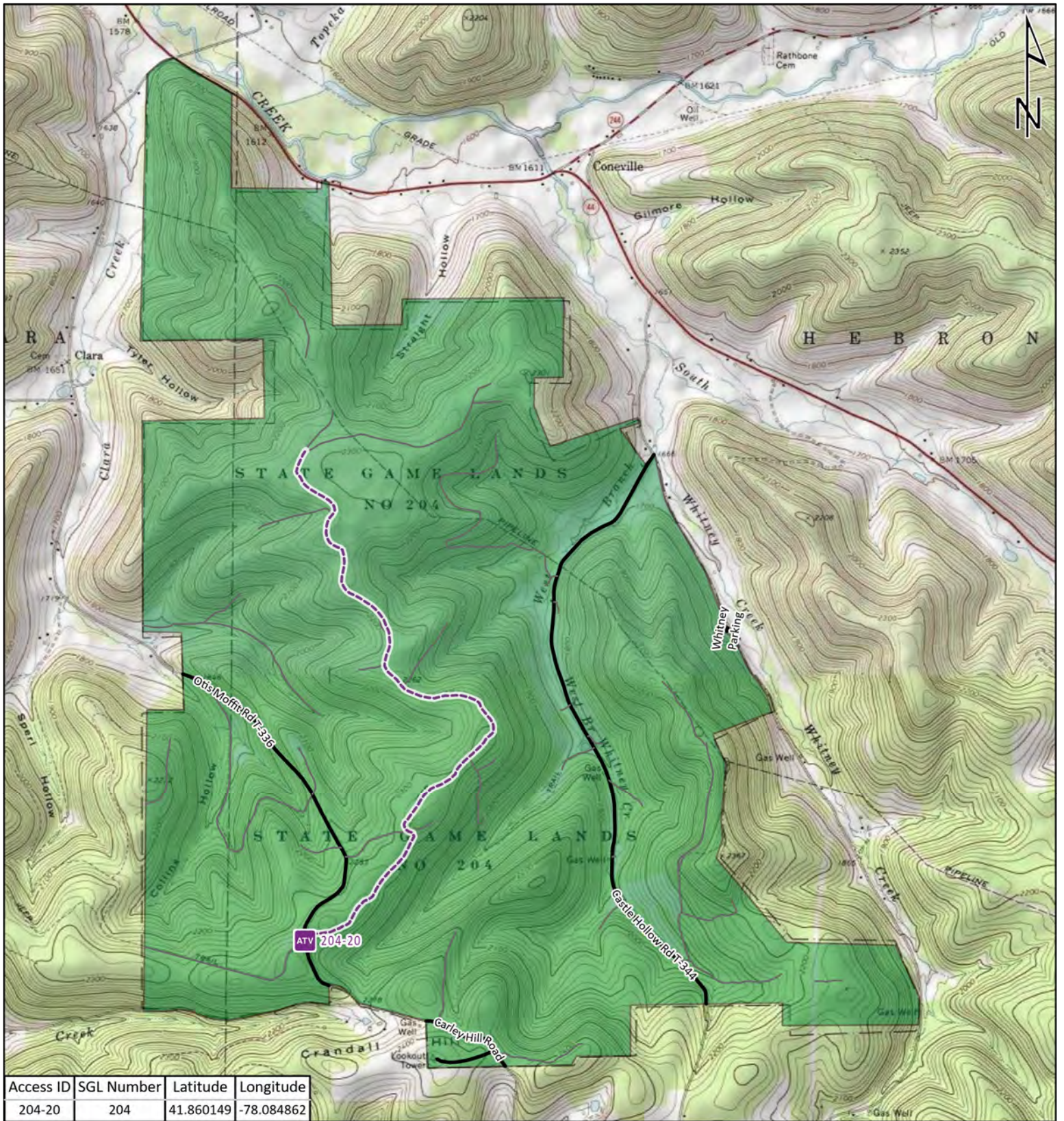


## STATE GAME LAND 100









It is unlawful to ride ATV's on state game lands, except on designated roads open for persons issued a Disabled Person Permit, and who have a valid registration from the Department of Conservation & Natural Resources.



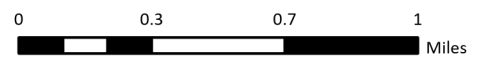
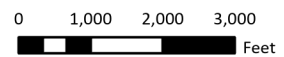


Access ID	SGL Number	Latitude	Longitude
204-20	204	41.860149	-78.084862

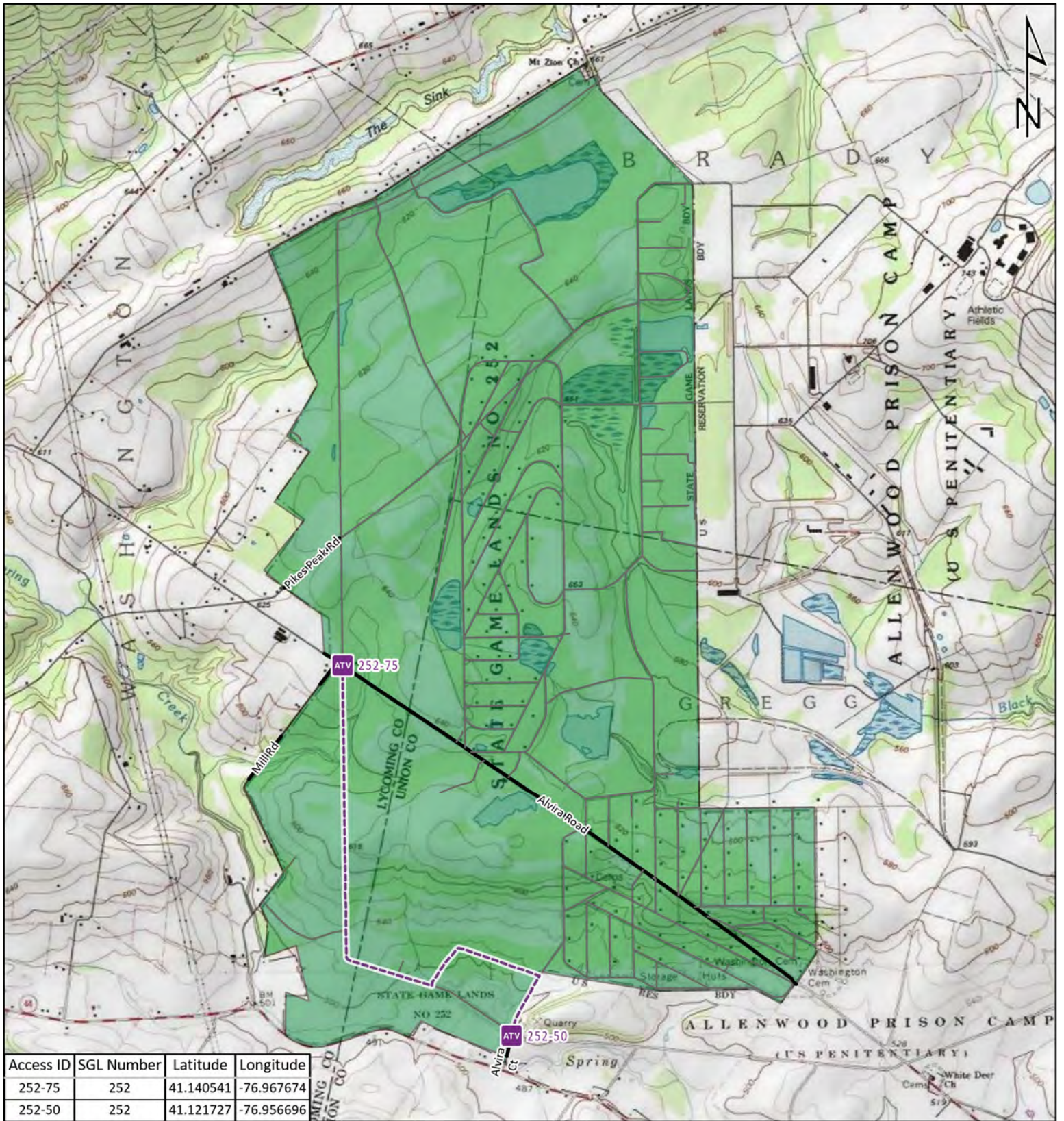
-  Disabled Hunter Access Trail Start
-  State Game Land Boundary
- Game Land Roads**
-  Roads Open to Vehicle Traffic
-  Roads Seasonally Open to Vehicle Traffic
-  Roads Closed to Vehicle Traffic
-  ATV Access with Permit



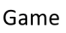





## STATE GAME LAND 204



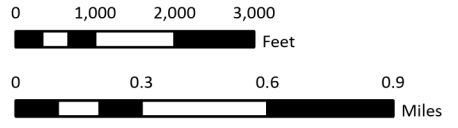
It is unlawful to ride ATV's on state game lands, except on designated roads open for persons issued a Disabled Person Permit, and who have a valid registration from the Department of Conservation & Natural Resources.



-  Disabled Hunter Access Trail Start
-  State Game Land Boundary
-  Game Land Roads
-  Roads Open to Vehicle Traffic
-  Roads Seasonally Open to Vehicle Traffic
-  Roads Closed to Vehicle Traffic
-  ATV Access with Permit

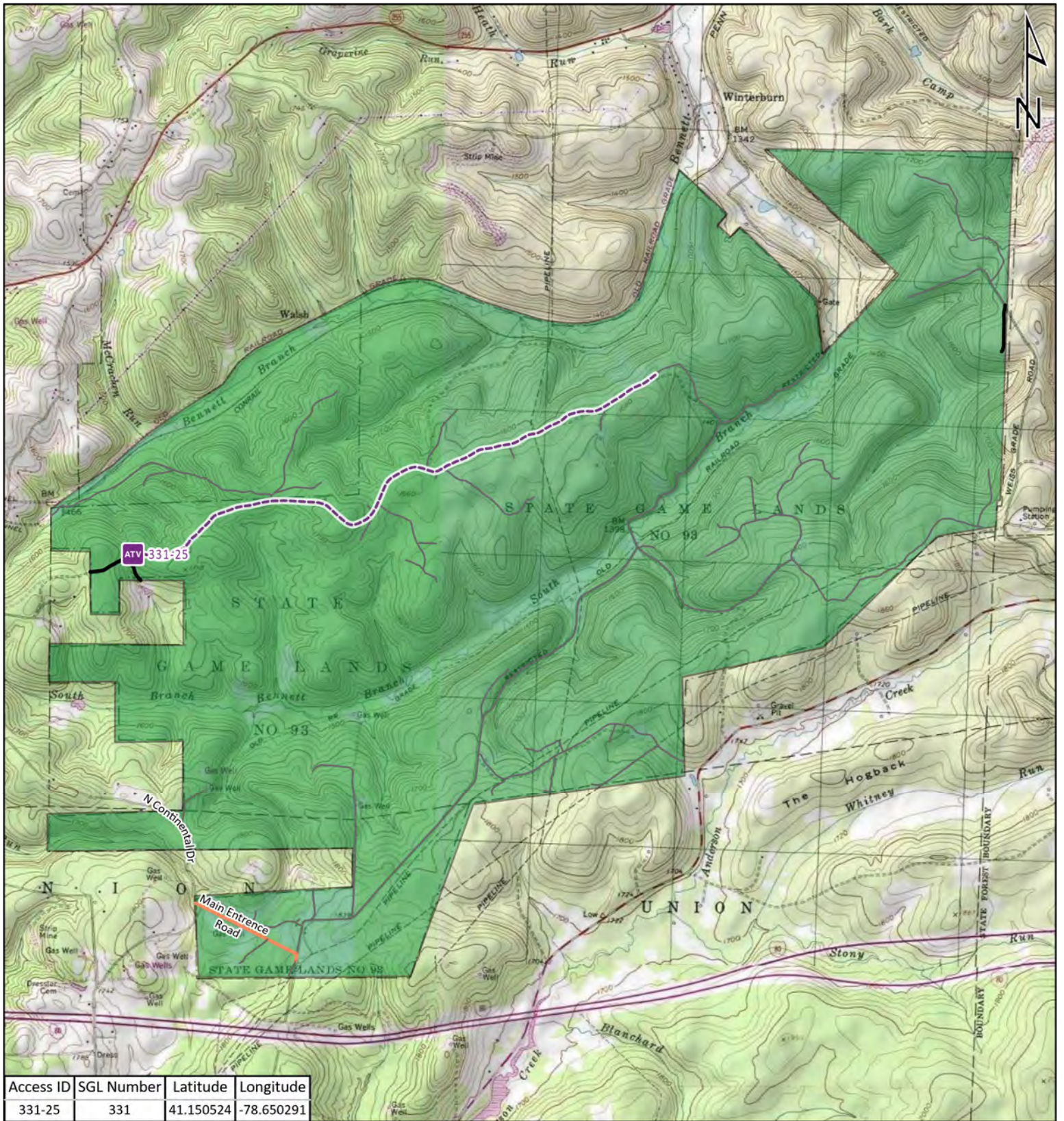


## STATE GAME LAND 252



It is unlawful to ride ATV's on state game lands, except on designated roads open for persons issued a Disabled Person Permit, and who have a valid registration from the Department of Conservation & Natural Resources.



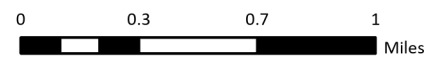
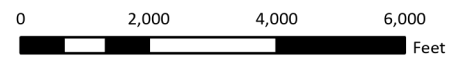


Access ID	SGL Number	Latitude	Longitude
331-25	331	41.150524	-78.650291

- Disabled Hunter Access Trail Start
- State Game Land Boundary
- Game Land Roads
- Roads Open to Vehicle Traffic
- Roads Seasonally Open to Vehicle Traffic
- Roads Closed to Vehicle Traffic
- ATV Access with Permit



## STATE GAME LAND 331



It is unlawful to ride ATV's on state game lands, except on designated roads open for persons issued a Disabled Person Permit, and who have a valid registration from the Department of Conservation & Natural Resources.