



# P E N N S Y L V A N I A GAME COMMISSION

**YOUR STATE  
WILDLIFE AGENCY**

*Managing and protecting wildlife and their habitats while promoting hunting and trapping for current and future generations.*

## STATE OF THE FLOCK

Pennsylvania Game Commission Wild Turkey Biologist Mary Jo Casalena recently provided a video update on the status of Pennsylvania's turkey flock, including population information, current turkey management initiatives and more. The video is available at [www.youtube.com/PAGameCommission](http://www.youtube.com/PAGameCommission) and at [www.Facebook.com/PennsylvaniaGameCommission](http://www.Facebook.com/PennsylvaniaGameCommission).



## REPORT YOUR HARVEST THIS SPRING

### -NEW TOLL-FREE NUMBER-

Successful turkey hunters must immediately and properly tag the bird before moving it from the harvest site and are required by law to report it to the Game Commission. There are three ways harvests can be reported: online at [www.pgc.pa.gov](http://www.pgc.pa.gov); by calling the NEW toll-free number 1-800-838-4431; or by mailing the harvest report card in the hunting and trapping digest.

For most hunters, harvests must be reported within 10 days. Mentored hunters must report harvests within five days. When reporting, it's helpful for hunters to have licenses present, as well as the tag and information, such as beard and spur length. Visit [www.pgc.pa.gov](http://www.pgc.pa.gov) for more information about harvest reporting.

# SPRING GOBBLER SEASON TAKES FLIGHT



PHOTO: BY JACOB DINGEL

**MAY 2021**

Pennsylvania hunters eagerly await the state's only springtime big-game season and the outlook for the season is good. The 2021 statewide Spring Gobbler Season runs May 1-31 and a youth hunt was held on Saturday, April 24. Only bearded birds may be harvested during the spring season, and hunting is permitted by calling only.

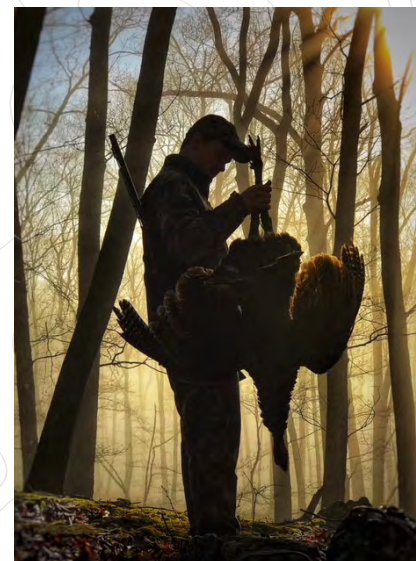
There is no requirement for hunters to wear fluorescent orange during the spring turkey season; however, it is recommended that orange be worn while moving. Turkey hunters should not wear clothing that contains black, like the color found on a turkey's body, or red, white or blue, like those on the turkey's head.

Visit [www.pgc.pa.gov](http://www.pgc.pa.gov) or reference the Pennsylvania Hunting & Trapping Digest for turkey hunting rules and regulations. Good luck in the woods! Have fun and hunt safely.

## 2021 TURKEY HUNT PHOTO CONTEST

Show off your spring turkey hunting adventures by entering the Pennsylvania Game Commission's 2021 Turkey Hunt Photo Contest. To enter, send ONE turkey hunting-related photo, taken in 2021, to [pgc-contest@pa.gov](mailto:pgc-contest@pa.gov), with the subject line: "Turkey," before Tuesday, June 1, 2021.

Photos submitted must be related to turkey hunting and can include hunting blind photos, turkey calling photos, harvest photos and more. Participants could win a custom Pennsylvania made turkey call and an assortment of Game Commission merchandise. [Click here](#) or visit [www.pgc.pa.gov](http://www.pgc.pa.gov) for more details. Thank you to Jarret Bakner of Franklin County for sharing this awesome photo from his 2018 spring gobbler hunt.



# 2021-22 HUNTING LICENSES GO ON SALE MONDAY, JUNE 14

HuntFishPA: NEW MOBILE-FRIENDLY, OUTDOOR RECREATIONAL LICENSING PLATFORM



Pennsylvania's 2021-22 hunting licenses will go on sale Monday, June 14, at various vendor locations across the state, including the Game Commission's region offices and headquarters. Licenses can also be purchased online at [www.huntfish.pa.gov](http://www.huntfish.pa.gov), the state's new user-friendly licensing platform for hunters, anglers and boaters.

Customers will notice that their new hunting and trapping licenses purchased in a store will be printed on durable green paper, replacing the yellow license color that was used previously.

More information about the new licensing system, as well as instructional videos that guide users through their purchases are [available here](#) or by visiting [www.pgc.pa.gov](http://www.pgc.pa.gov).

## 2021-22 HUNTING/TRAPPING SEASONS SET

The Pennsylvania Board of Game Commissioners approved the hunting and trapping seasons and bag limits for the upcoming 2021-22 license year. [Click here](#) or visit [www.pgc.pa.gov](http://www.pgc.pa.gov) for all seasons and bag limits information. Modifications for the 2021-22 seasons include the following:

- A statewide, 14-day concurrent antlered and antlerless firearms season, which was proposed to simplify regulations and provide increased opportunity, especially for younger hunters.
- Expanded Sunday hunting opportunities: There are three Sundays approved for hunting this fall, which encompass any legal species in season on those dates, with the exception of migratory birds. The dates are Sunday, Nov. 14, 21, and 28, 2021.
- Moving up the start of the extended bear season to begin on the firearms deer opener and include Sunday, Nov. 28 in the WMUs where the season is open.
- The closure of the fall turkey season in WMU 5A and reductions in season length for 14 other WMUs due to declining population trends. The recommendations are in accordance with Wild Turkey Management Plan guidelines to increase hen survival.
- One change affecting all fall-turkey hunters is the prohibition of the use of centerfire rifles, rimfire rifles and handguns in

the fall-turkey season. Season lengths have been adjusted in many WMUs.

- The extended (post-Christmas) antlerless firearms season that traditionally has been held in certain counties in southeastern and southwestern Pennsylvania will be held in all of WMUs 2B, 5C and 5D, given that antlerless harvests are evenly distributed throughout these WMUs regardless of firearms restrictions.
- The antlerless designation was removed from the late elk season to provide the Game Commission the flexibility to issue antlered elk licenses for this season.
- The commissioners also set the number of antlerless deer licenses to be allocated, as well as the number of elk licenses to be allocated for the coming license year.



**2021-22  
HUNTING  
SEASONS AND  
BAG LIMITS  
AVAILABLE AT  
[WWW.PGC.PA.GOV](http://WWW.PGC.PA.GOV)**



## 2020-21 DEER HARVEST REPORT

This spring, the Pennsylvania Game Commission released its annual deer harvest report, which estimated hunters harvested 435,180 deer in Pennsylvania during the 2020-21 hunting seasons. Of the deer harvested in the 2020-21 hunting seasons approximately 174,780 were antlered and 260,400 were antlerless deer.

Bowhunters accounted for over a third of Pennsylvania's 2020-21 overall deer harvest taking 160,480 deer (80,130 antlered and 80,350 antlerless deer) with either bows or crossbows. The estimated muzzleloader harvest was 28,260, of which 1,140 were antlered deer. The report is available at [www.pgc.pa.gov](http://www.pgc.pa.gov) or by [clicking here](#). Photo by Jacob Dingel.



# PLEASE DO NOT DISTURB YOUNG WILDLIFE

Many species of wildlife are born in the spring and it's almost certain Pennsylvanians will encounter young wildlife this time of year. While some young animals might appear to be abandoned, usually they are not. Their mothers are likely watching over them from somewhere nearby.

When encountering young wildlife, be it deer, birds, rabbits or other animals, the Game Commission urges Pennsylvanians to resist the urge to interfere with young wildlife or remove any wild animal from its natural setting, for the protection of humans and wildlife. It is illegal to take or possess wildlife from the wild. Photo by Jacob Dingel.

## HOW TO BE BEAR AWARE

Black bears have recently emerged from winter hibernation, and just like a human who wakes up in search of food, bears are hungry, too, and are on the prowl.

Black bears are omnivores, which means they eat a diet consisting of plants and meat. Natural food sources can be low this time of year so bears are more likely to help themselves to food that is easily accessible. This includes bird feeders, trash cans and pet food left outside and within a bear's reach.

Once a bear finds easy access to food, they are likely to frequently come back for more. Why spend energy searching the woods for food when people are handing it out for free, right? Unfortunately, with each returning trip, a bear can slowly lose his or her fear of people and make bolder attempts to access food, which can lead to property damage, or worse, dangerous human-bear interactions.

Help prevent negative human-bear interactions and keep Pennsylvania bears wild by:

- Removing potential bear snacks, like pet food containers or bird feeders, inside overnight or removing them entirely if bears continually return.
- Keeping trash cans inside, when possible, until the morning of collection day.
- Regularly cleaning and removing grease from outside grills.



Please note, in Pennsylvania, it is illegal to intentionally feed bears. For more information about black bears or safety tips visit [www.pgc.pa.gov](http://www.pgc.pa.gov). Photo by Game Commission Southcentral Region Information and Education Supervisor Amy Nabozny.

## SOUNDS OF SPRING

As the days are growing longer, the sun is shining and fresh greenery begins to grow again, springtime in Penn's Woods is a beautiful place! The Game Commission recently published its "Sounds of Spring," an audio tour featuring commonly heard birds in Pennsylvania throughout spring, such as the eastern bluebird, red-winged blackbird, wild turkey and more. [Click here](#) or visit [www.pgc.pa.gov](http://www.pgc.pa.gov) to listen. Photo by Jacob Dingel.



## HELP PROTECT PENNSYLVANIA WILDLIFE

Wildlife crimes affect everyone. The Pennsylvania Game Commission's Operation Game Thief program serves to protect wild birds and wild mammals and encourages those who have information related to wildlife crimes to report details as soon as possible.

To report information, call the Operation Game Thief's toll-free hotline – 24 hours a day, seven days a week, 365 days a year – at 1-888-PGC-8001 or fill out an online form at <http://bit.ly/PGCOGT>.

Calls to the Operation Game Thief hotline are always answered by a secure recording device. Although it is beneficial to provide contact information in case game wardens have follow-up questions, callers may remain confidential. Learn more about the program here: <http://bit.ly/PGCOGT>.



## TUNE IN TO CALL OF THE OUTDOORS

Call of the Outdoors is the Pennsylvania Game Commission's podcast, hosted by Marketing Bureau Director Matt Morrett. New episodes featuring guests from within the agency, as well as hunters, public figures and more, are published each month.

The episodes feature unique and relevant issues, explaining Pennsylvania hunting and wildlife-related subjects and provides listeners with better ways to explore, promote and understand our natural resources. Call of the Outdoors episodes are available on [www.callofthe-outdoorspgc.com](http://www.callofthe-outdoorspgc.com), Apple Podcasts, Google Play Store, iHeartRadio, Spotify and Stitcher.



## REMOTE LEARNING RESOURCES AVAILABLE: WILDLIFE ON WIFI

Wildlife on WiFi (WoW) is the Pennsylvania Game Commission's award-winning virtual wildlife education program and is available [by clicking here](#) or visiting [www.pgc.pa.gov](http://www.pgc.pa.gov). The program's vision is to connect Pennsylvania residents to their state's wildlife agency from anywhere.

WoW provides wildlife enthusiasts – especially educators, students, parents and high-risk health communities – with home-based conservation and wildlife science education activities and lessons, virtual field trips and events, and social media games.



## FOLLOW US ONLINE



[www.facebook.com/PennsylvaniaGameCommission](http://www.facebook.com/PennsylvaniaGameCommission)  
@PennsylvaniaGameCommission



[www.instagram.com/pagamecomm](http://www.instagram.com/pagamecomm)  
@pagamecomm



[www.twitter.com/PAGameComm](http://www.twitter.com/PAGameComm)  
@pagamecomm



[www.youtube.com/PAGameCommission](http://www.youtube.com/PAGameCommission)



[www.facebook.com/OperationGameThiefPGC](http://www.facebook.com/OperationGameThiefPGC)  
@OperationGameThiefPGC



[www.flickr.com/photos/pagamecomm](http://www.flickr.com/photos/pagamecomm)  
Pennsylvania Game Commission

# PENNSYLVANIA GAME COMMISSION: YOUR STATE WILDLIFE AGENCY

### HEADQUARTERS

2001 Elmerton Avenue, Harrisburg, PA 17110-9797  
Phone: 717-787-4250

### REGION OFFICES

**NORTHWEST REGION:** Butler, Clarion, Crawford, Erie, Forest, Jefferson, Lawrence, Mercer, Venango, Warren counties  
1509 Pittsburgh Road, Franklin, PA 16323  
Phone: 814-432-3187

**SOUTHWEST REGION:** Allegheny, Armstrong, Beaver, Cambria, Fayette, Greene, Indiana, Somerset, Washington, Westmoreland counties  
4820 Route 711, Bolivar, PA 15923 | Phone: 724-238-9523

**NORTHCENTRAL REGION:** Cameron, Centre, Clearfield, Clinton, Elk, Lycoming, McKean, Potter, Tioga, Union counties  
1566 South Route 44 Highway, Post Office Box 5038, Jersey Shore, PA 17740-5038 | Phone: 570-398-4744

**SOUTHCENTRAL REGION:** Adams, Bedford, Blair, Cumberland, Franklin, Fulton, Huntingdon, Juniata, Mifflin, Perry, Snyder, York counties  
8627 William Penn Highway, Huntingdon, PA 16652  
Phone: 814-643-1831

**NORTHEAST REGION:** Bradford, Carbon, Columbia, Lackawanna, Luzerne, Monroe, Montour, Northumberland, Pike, Sullivan, Susquehanna, Wayne, Wyoming counties  
3917 Memorial Highway, Dallas, PA 18612-0220  
Phone: 570-675-1143

**SOUTHEAST REGION:** Berks, Bucks, Chester, Dauphin, Delaware, Lancaster, Lebanon, Lehigh, Montgomery, Northampton, Philadelphia, Schuylkill counties  
253 Snyder Road, Reading, PA 19605 | Phone: 610-926-3136

VISIT US ONLINE AT [WWW.PGC.PA.GOV](http://WWW.PGC.PA.GOV)