



P E N N S Y L V A N I A GAME COMMISSION

**YOUR STATE
WILDLIFE AGENCY**

Managing and protecting wildlife and their habitats while promoting hunting and trapping for current and future generations.



Hundreds of Pennsylvania hunters have suffered serious injuries as a result of tree stand-related accidents. Hunters using tree stands can reduce their risk of falling by remembering these STEPS every time they climb into a tree:

- **Safety harness or belt:** Always wear a full-body safety harness whenever your feet leave the ground.
- **Tree stand maintenance:** Check your stand for missing or broken parts before each use.
- **Evaluate your stand site:** Select trees that are alive and will support your weight.
- **Partners and plans:** Hunt with a partner and have a plan in case of an emergency.
- **Signals:** Carry a whistle or other signaling device should you need assistance.

Visit www.pgc.pa.gov for more hunting safety tips. Good luck. Have fun. Hunt safely.

Mark your calendars! Pennsylvania has THREE expanded Sunday Hunting opportunities this November on Sunday, Nov. 12, 19 and 26, 2023.

Turkeys and migratory game birds may not be hunted on any of these three Sundays. All other game that's in season may be hunted on these Sundays.

In 2023, Sunday hunting is open on the following dates for the following species.

1. **SUNDAY, NOV. 12:** Deer (archery), Bear (archery in WMUs 2B, 5B, 5C and 5D only), Squirrel, Pheasant, Rabbit, Grouse, Bobwhite Quail, Woodchuck, Crow, Raccoon, Fox, Coyote, Opossum, Striped Skunk, Weasel and Porcupine.
2. **SUNDAY, NOV. 19:** Bear, Deer (archery in WMUs 2B, 5C and 5D only), Squirrel, Pheasant, Rabbit, Grouse, Bobwhite Quail, Woodchuck, Crow, Raccoon, Fox, Coyote, Opossum, Striped Skunk, Weasel and Porcupine.
3. **SUNDAY, NOV. 26:** Deer, Bear (only in WMUs with Extended Season), Raccoon, Fox and Coyote.

Coyote hunters during any big-game season must follow big-game orange requirements. Aside from these exceptions, Sunday hunting is unlawful in Pennsylvania.

On these three Sundays, hunters on private land are required to carry written permission from the landowner. The permission slip should be signed by the landowner and include the hunter's name, address and CID license number as well as the landowner's name, address and phone number.

GOOD LUCK. HAVE FUN. HUNT SAFELY.



SUPPORT OPENING MORE SUNDAYS TO HUNT?

If you support opening more Sundays to hunt in Pennsylvania, contact your state representative and/or your state senator and ask them to support Senate Bill 67, which seeks to grant the Pennsylvania Game Commission full authority to regulate hunting on Sundays. Contact information for your representative is available at www.legis.state.pa.us.

PENNSYLVANIA'S 2023 SUNDAY HUNTING DATES

SUNDAY, NOV. 12

SUNDAY, NOV. 19

SUNDAY, NOV. 26



RAIGAN FREDERICKS,
Lycoming County,
Sunday, Nov. 27, 2022



STAY VISIBLE. WEAR ORANGE.

Be sure to wear at least 250 square inches of fluorescent orange clothing when hiking, hunting or recreating outdoors during hunting seasons. Learn more in the *Outdoor Digest* or at www.pgc.pa.gov.

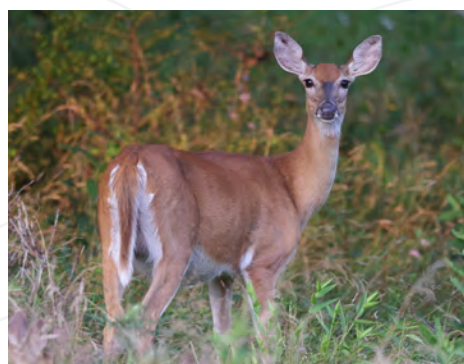
2023-24 HUNTING SEASONS ARE UNDERWAY

Get in the game this fall! From Sunday hunting opportunities, to concurrent deer seasons, to pheasant stockings, managed dove fields and more, the 2023-24 license year is full of opportunity!

The 2023-24 license year features an archery deer season that runs into the prime of the rut; three different elk hunts; multiple opportunities spread across months to take bears with bows, muzzleloaders, shotguns and rifles; and a 14-day firearms deer season that includes three Saturdays and a Sunday.

Deer hunters: Please remember to check updated maps and regulations related to Chronic Wasting Disease (CWD) for the upcoming seasons. CWD is a threat to deer and elk, and all necessary precautions must be taken to keep the disease from spreading to new areas of the state. Learn more at www.pgc.pa.gov.

Thank you for being a Pennsylvania hunter, trapper and conservationist! Good luck. Have fun. Hunt safely.



DMAP PERMITS NOW AVAILABLE ON CERTAIN STATE GAME LANDS

NEW for the 2023-24 hunting seasons, permits for Pennsylvania's Deer Management Assistance Program (DMAP) are available on certain state game lands.

DMAP allows hunters additional permits to allow them to harvest antlerless deer — one per tag — on a specific property.

The Pennsylvania Game Commission is offering DMAP on certain game lands to better achieve its goal of creating healthy wildlife habitat while providing more opportunities for hunters.

Resident hunters can purchase up to two DMAP permits per state game lands DMAP unit for \$10.97, at a license vendor or at www.huntfishpa.gov. Nonresidents are \$35.97. Details on units and remaining permits are available at www.pgcapps.pa.gov/Harvest/DMAP.

HUNTERS REMINDED TO REPORT BANDED BIRDS

Each year, thousands of birds are marked with leg bands to help the Pennsylvania Game Commission and the U.S. Fish and Wildlife Service learn more about migratory movements, harvest numbers and survival rates.

Hunters are encouraged to report banded geese, doves, ducks and woodcock they harvest online at www.reportband.gov or by phone at 1-800-327-BAND. Hunters will be asked to provide information on where, when and what species of migratory birds were taken, in addition to the band number.

This information is critical to the successful management of migratory birds and the setting of hunting regulations. Thank you in advance for assisting in managing this valuable resource!



GET YOUR 2023-24 HUNTING LICENSE TODAY!
Pennsylvania hunters can purchase their 2023-24 hunting and trapping license from a License Agent. Follow the QR code for details.

nt orange clothing that's visible from 360 degrees on your head, chest and back while seasons. Find all fluorescent orange requirements in the 2023-24 Hunting & Trapping

DONATE VENISON THROUGH HUNTERS SHARING THE HARVEST

THANK YOU to generous hunters who donated 235,532 pounds of venison to Hunters Sharing the Harvest, Pennsylvania's premiere venison donation program, during the 2022-23 seasons.

This hunter-inspired community outreach channels hunter-donated venison through a network of approved deer processors, food banks and local charitable provider organizations throughout Pennsylvania's urban and rural communities.

If you already have a full freezer, consider donating your next harvest to help feed a neighbor in need. An average-size deer provides enough high-protein, low-fat meat for 200 meals!

To learn more, donate or volunteer, visit www.sharedeer.org or call 866-474-2142.



EXPERIENCE PENNSYLVANIA'S ELK HERD THIS FALL

Visiting Pennsylvania's Elk Country has become an annual tradition for thousands of people from near and far. Pennsylvania's elk herd of nearly 1,400 freely roams across 3,000 square miles, mostly within Elk, Cameron, Clinton, Clearfield and Centre counties.

While visiting Elk Country, do your part to preserve the wild nature of the elk herd by being ELK SMART.

- 1. GIVE ELK SPACE.** Keep a distance – of at least 100 yards – between you and the elk.
- 2. NEVER FEED ELK.** Not only is it illegal to feed elk in Pennsylvania, but it's also dangerous to both people and elk.
- 3. DON'T NAME ELK.** Characterizing elk, or any wildlife, by naming them degrades their wild essence.
- 4. DO YOUR PART.** If you see someone being disruptive or careless, kindly ask them to stop or report it to the Pennsylvania Game Commission's Northcentral Region by calling 570-398-4744.

Learn more about how to be ELK SMART at www.pgc.pa.gov.

TUNE IN TO THE ELK CAM

If you can't travel to Elk Country this fall, tune in to our Elk Cam, which is live streaming the elk action from Benezette until the start of archery season.

Visit www.hdontap.com and search "PA Game Elk Cam" to watch live.



DAY.
ing licenses online at www.huntfish.pa.gov or in-store at a Licensing Issuing



HELP PROTECT PENNSYLVANIA WILDLIFE

Wildlife crimes affect everyone. The Pennsylvania Game Commission's Operation Game Thief program serves to protect wild birds and wild mammals and encourages those who have information related to wildlife crimes to report details as soon as possible.

Report information to the Operation Game Thief's toll-free hotline – 24 hours a day, seven days a week, 365 days a year – at 1-888-PGC-8001 or fill out an online form at <http://bit.ly/PGCOGT>. Callers may remain confidential. Learn more about the program online at <http://bit.ly/PGCOGT>.



FOLLOW THE PENNSYLVANIA GAME COMMISSION



ARE WE CONNECTED?

Follow the Pennsylvania Game Commission on social media to stay up to date on all things related to wildlife, hunting, trapping and more!

In addition to the Game Commission's official page, each of our regions: Northwest, Southwest, Northcentral, Southcentral, Northeast, Southeast and Middle Creek Wildlife Management Area now have a dedicated Facebook page where you can get the latest news, stories and information at a local level (like prescribed burns, road and range closures, local habitat improvement projects and more)!

For more details on all the ways you can connect with the Game Commission, visit www.pgc.pa.gov.



CONNECT WITH PA WILD WOMEN

The Pennsylvania Game Commission's Hunter Education and Outreach Division recently launched its latest R3 initiative: PA Wild Women.

This is a Facebook Group designed to connect women to the outdoors and is open to everyone, from experienced outdoorswomen to those who are just getting started in any outdoor recreation activity.

Through this group, women will be able to learn from, grow with and encourage each other to participate in hunting, trapping, fishing, hiking, kayaking and much more.

Members of the PA Wild Women Facebook Group will also receive access to online workshops, weekly tips and tactics and notifications of in-person events.

While anyone can join the PA Wild Women Facebook Group, all content is created by women for women. To join PA Wild Women, visit www.facebook.com/groups/pawildwomen.



REPORT YOUR HARVEST

Hunters: Do your part and report your harvest this fall! Report online at www.huntfish.pa.gov; by calling 1-800-838-4431; or by mail (Attn Harvest Reports, PA Game Commission, 2001 Elmerton Ave., Harrisburg, PA 17110-9851).

FOLLOW US ONLINE



PENNSYLVANIA GAME COMMISSION: YOUR STATE WILDLIFE AGENCY

HEADQUARTERS

2001 Elmerton Avenue, Harrisburg, PA 17110-9797
Phone: 717-787-4250

REGION OFFICES

NORTHWEST REGION - 1509 Pittsburgh Road, Franklin, PA 16323
Butler, Clarion, Crawford, Erie, Forest, Jefferson, Lawrence, Mercer, Venango, Warren counties

SOUTHWEST REGION - 4820 Route 711, Bolivar, PA 15923
Allegheny, Armstrong, Beaver, Cambria, Fayette, Greene, Indiana, Somerset, Washington, Westmoreland counties

NORTHCENTRAL REGION - 1566 South Route 44 Highway, Post Office Box 5038, Jersey Shore, PA 17740-5038
Cameron, Centre, Clearfield, Clinton, Elk, Lycoming, McKean, Potter, Tioga, Union counties

SOUTHCENTRAL REGION - 8627 William Penn Highway, Huntingdon, PA 16652

Adams, Bedford, Blair, Cumberland, Franklin, Fulton, Huntingdon, Juniata, Mifflin, Perry, Snyder, York counties

NORTHEAST REGION - 3917 Memorial Highway, Dallas, PA 18612-0220

Bradford, Carbon, Columbia, Lackawanna, Luzerne, Monroe, Montour, Northumberland, Pike, Sullivan, Susquehanna, Wayne, Wyoming counties

SOUTHEAST REGION - 253 Snyder Road, Reading, PA 19605

Berks, Bucks, Chester, Dauphin, Delaware, Lancaster, Lebanon, Lehigh, Montgomery, Northampton, Philadelphia, Schuylkill counties

VISIT US ONLINE AT WWW.PGC.PA.GOV