



COMMONWEALTH OF PENNSYLVANIA
PENNSYLVANIA GAME COMMISSION

AGENDA

HARRISBURG, PENNSYLVANIA
April 12, 2011

Carl G. Roe
Executive Director

Table of Contents

Call to Order 1

Pledge of Allegiance 1

Roll Call of Commissioners..... 1

Approval of Minutes of Meeting held February 1, 2011 1

BUREAU OF WILDLIFE MANAGEMENT

A. State Wildlife Grants Program 2

ADOPTED RULE MAKING

B. Adoption of proposed amendments to §139.4 3-11

C. Adoption of proposed amendments to §141.28 12-13

BUREAU OF WILDLIFE PROTECTION

ADOPTED RULEMAKING

A. Adoption of proposed amendments to §131.2 14-15

B. Adoption of proposed amendments to §141.1 16-17

C. Adoption of proposed amendments to §141.4 18-21

D. Adoption of proposed amendments to §141.20 22-24

E. Adoption of proposed amendments to §141.41 25-26

F. Adoption of proposed amendments to §§141.62, 141.63 and 141.69 27-29

G. Adoption of proposed amendments to §143.67 30-31

BREAU OF WILDLIFE HABITAT MANAGEMENT

REAL ESTATE

A. Acquisition

 Contract No. 3582, State Game Land No. 87, Clearfield County, and
 Contract No. 3583, State Game Land No. 217, Carbon County..... 32-35

B. Land Exchanges

 Contract No. 3584, State Game Land No. 198, Cambria County..... 36-37

OIL/GAS & MINERALS

C. Restricted Surface Use Oil/Gas Production Agreement, State Game Land No. 114,
 Lycoming County 38-39

D. Restricted Surface Use Oil/Gas Production Agreement, State Game Land No. 172,
 Bradford County 40-41

E. Oil/Gas Production Agreement/Land Exchange, State Game Land No. 268,
 Tioga County 42-44

Other New Business..... 45

Commission Meeting Dates approved for 2011 and January 2012 45

Executive Session, if necessary, will be held immediately following the close of the
Commission Meeting 45

Adjournment 45

Commonwealth of Pennsylvania
Pennsylvania Game Commission

Agenda

The Commission Meeting of the Pennsylvania Game Commission will be held on Tuesday, April 12, 2011 at 2001 Elmerton Avenue, Harrisburg, Pennsylvania beginning at 8:30 a.m.

Call to Order

Pledge of Allegiance

Roll Call of Commissioners

Ronald A. Weaner, President
Ralph A. Martone, Vice President
David J. Putnam, Secretary
Gregory J. Isabella
Thomas E. Boop
David W. Schreffler
James J. Delaney, Jr.
Robert W. Schlemmer

Approval of Minutes of Meeting held February 1, 2011.

BUREAU OF WILDLIFE MANAGEMENT

A. State Wildlife Grants Program

Commentary: Congress has appropriated funds under the State Wildlife Grants Program (SWG) directly and exclusively to state wildlife agencies for "wildlife species of the greatest conservation concern." Pennsylvania is eligible to receive these funds for fish and wildlife projects under the SWG program. We are recommending approval of a SWG funded project entitled, *Genetic Approaches to Understanding the Population Structure of Little Brown Bats (Myotis lucifugus) in Pennsylvania.*

This work will be done by Dr. Cassandra Miller-Butterworth at Pennsylvania State University. This project will utilize molecular tools to examine the population genetic structure of *Myotis lucifugus* in Pennsylvania. The intent of the analysis will be to determine which colonies of bats are genetically related, and over what spatial scales and in which directions individuals move between roosts. This research also will identify potential geographic barriers to bat movement, leading to partially isolated, genetically discrete sub populations. The concern is that these bats may be particularly vulnerable to forest habitat fragmentation and White Nose Syndrome, and would need to be considered and treated as distinct management units.

Total SWG funds for this project are \$28,807. This project will not require any net reduction in the Game Fund, since it is a cooperator project. If approved, the Commission will contract with the organization and investigator, and pay SWG-eligible costs from the Game Fund. The Game Fund will be reimbursed by the U.S. Fish and Wildlife Service, Federal Aid program using SWG funds. The Commission will receive up to 3 percent of all SWG funds to administer the program.

Recommendation: The Executive Director and staff recommend approval of this State Wildlife Grant project as described in the above commentary.

Action:

ADOPTED RULE MAKING

B. Adoption of proposed amendments to §139.4.

Commentary: To effectively manage the wildlife resources of this Commonwealth, the Game Commission proposed at its February 1, 2011 meeting, to amend §139.4 (relating to seasons and bag limits for the license year) to provide updated seasons and bag limits for the 2011-2012 hunting license year.

Recommendation: The Executive Director and staff recommend FINAL ADOPTION of this amendment to 58 Pa. Code as shown on EXHIBIT "B."

Action:

EXHIBIT "B"

(SEASONS AND BAG LIMITS TABLE)

2011-2012 OPEN HUNTING AND FURTAKING SEASONS, DAILY LIMIT, FIELD POSSESSION LIMIT AND SEASON LIMIT OPEN SEASON INCLUDES FIRST AND LAST DATES LISTED

Species	First Day	Last Day	Daily Limit	Field Possession Limit After First Day
<i>Squirrels</i> – (Combined species) <i>Eligible Junior Hunters only</i> , with or without the required license, when properly accompanied as required by law	Oct. 8	Oct. 14	6	12
<i>Squirrels</i> – (Combined species)	Oct. 15 and Dec. 12 and Dec. 26	Nov. 26 and Dec. 23 and Feb. 4, 2012	6	12
<i>Ruffed Grouse</i>	Oct. 15 and Dec. 12 and Dec. 26	Nov. 26 and Dec. 23 and Jan. 28, 2012	2	4
<i>Rabbits, Cottontail</i> <i>Eligible Junior Hunters only</i> , with or without the required license, when properly accompanied as required by law	Oct. 8	Oct. 15	4	8
<i>Rabbits, Cottontail</i>	Oct. 22 and Dec. 12 and Dec. 26	Nov. 26 and Dec. 23 and Feb. 25, 2012	4	8
<i>Ring-necked Pheasant</i> – There is no open season for the taking of pheasants in any area designated as a wild pheasant recovery area within any wildlife management unit.				

Species	First Day	Last Day	Daily Limit	Field Possession Limit After First Day
<i>Ring-necked Pheasant - Male only</i> in WMUs 2A, 2B, 2C, 4C, 4E, 5A, & 5B <i>Eligible Junior Hunters only</i> , with or without the required license, when properly accompanied as required by law	Oct. 8	Oct. 15	2	4
<i>Ring-necked Pheasant - Male or female</i> combined in WMUs 1A, 1B, 2D, 2E, 2F, 2G, 3A, 3B, 3C, 3D, 4A, 4B, 4D, 5C & 5D <i>Eligible Junior Hunters only</i> , with or without the required license, when properly accompanied as required by law	Oct. 8	Oct. 15	2	4
<i>Ring-necked Pheasant - Male only</i> in WMUs 2A, 2B, 2C, 4C, 4E, 5A, & 5B	Oct. 22	Nov. 26	2	4
<i>Ring-necked Pheasant - Male or female</i> combined in WMUs 1A, 1B, 2D, 2E, 2F, 2G, 3A, 3B, 3C, 3D, 4A, 4B, 4D, 5C & 5D	Oct. 22 Dec. 12 Dec. 26	and and and Nov. 26 Dec. 23 Feb. 4, 2012	2	4
<i>Bobwhite Quail</i> - The hunting and taking of bobwhite quail is permitted in all WMUs except in WMUs 4A, 4B, 5A, 5B, 5C & 5D where the season is closed.	Oct. 22	Nov. 26	4	8
<i>Hares (Snowshoe Rabbits) or Varying Hares</i>	Dec. 26	Dec. 31	1	2
<i>Woodchucks (Groundhog)</i>	No closed season except during the regular firearms deer seasons.		Unlimited	
<i>Porcupines</i>	No closed season except during the regular firearms deer seasons.		Unlimited	

Species	First Day	Last Day	Daily Limit	Season Limit
<i>Turkey - Male or Female</i>			1	1
WMUs 1A, 1B & 2A (Shotgun, Bow & Arrow only)	Oct. 29 Nov. 24	and Nov. 26		
WMU 2B (Shotgun, Bow & Arrow only)	Oct. 29 Nov. 24	and Nov. 26		
WMUs 2C, 2D, 2E, 4A, 4B & 4D	Oct. 29 Nov. 24	and Nov. 26		
WMUs 2F, 2G, 3A, 3B, 3C, 3D, 4C & 4E	Oct. 29 Nov. 24	and Nov. 26		
WMUs 5A	Nov. 1	Nov. 3		
WMUs 5B, 5C & 5D	Closed to fall turkey hunting			
<i>Turkey (Spring Gobbler) Statewide¹ Bearded Bird only</i>			1	2
	Apr. 28, 2012	May 12, 2012	May be hunted 1/2 hour before sunrise to 12 noon	
		and		
	May 14, 2012	May 31, 2012	May be hunted 1/2 hour before sunrise to 1/2 hour after sunset	
<i>Turkey (Spring Gobbler) Statewide Youth Hunt¹ Bearded Bird only Eligible junior hunters only with the required license and when properly accompanied as required by law</i>	April 21, 2012	April 21, 2012	1	1

MIGRATORY GAME BIRDS

Except as further restricted by this chapter, the seasons, bag limits, hunting hours and hunting regulations for migratory game birds shall conform to regulations adopted by the United States Secretary of the Interior under authority of the Migratory Bird Treaty Act (16 U.S.C.A. §§703-711) as published in the Federal Register on or about August 27 and September 28 of each year. Exceptions:

(a) Hunting hours in §141.4 (relating to hunting hours).

(b) Nontoxic shot as approved by the Director of the United States Fish and Wildlife Service is required for use Statewide in hunting and taking of migratory waterfowl.

Species	First Day	Last Day	Daily Limit	Field Possession Limit After First Day
<i>Crows</i> (Hunting permitted on Friday, Saturday and Sunday only)	July 1	April 8, 2012		Unlimited
<i>Starlings and English Sparrows</i>		No closed season except during the regular firearms deer seasons.		Unlimited

FALCONRY

Species	First Day	Last Day	Daily Limit	Field Possession Limit After First Day
<i>Squirrels</i> – (Combined species)	Sept. 1	Mar. 31, 2012	6	12
<i>Quail</i>	Sept. 1	Mar. 31, 2012	4	8
<i>Ruffed Grouse</i>	Sept. 1	Mar. 31, 2012	2	4
<i>Cottontail Rabbits</i>	Sept. 1	Mar. 31, 2012	4	8
<i>Snowshoe or Varying Hare</i>	Sept. 1	Mar. 31, 2012	1	2
<i>Ring-necked Pheasant - Male and Female</i> - (Combined)	Sept. 1	Mar. 31, 2012	2	4

Migratory Game Birds - Seasons and bag limits shall be in accordance with Federal regulations.

WHITE-TAILED DEER

Species	First Day	Last Day	Season Limit
<i>Deer, Archery (Antlered & Antlerless)</i> ² (Statewide)	Oct. 1	Nov. 12	One antlered and an antlerless deer with each required antlerless license.
	Dec. 26	Jan. 16, 2012	
<i>Deer, Archery (Antlerless only)</i> WMUs 2B, 5C & 5D	Sep. 17	Sep. 30	An antlerless deer with each required antlerless license.
	Nov. 14	Nov. 26	
<i>Deer, Archery (Antlered & Antlerless)</i> ² WMUs 2B, 5C & 5D	Oct. 1	Nov. 12	One antlered and an antlerless deer with each required antlerless license.
	Dec. 26	Jan. 28, 2012	
<i>Deer, Regular firearms (Antlered & Antlerless)</i> ² WMUs 1A, 1B, 2B, 3A, 3D, 4A, 4C, 5A, 5B, 5C & 5D	Nov. 28	Dec. 10	One antlered, and an antlerless deer with each required antlerless license.
<i>Deer, Regular firearms (Antlered only)</i> ² WMUs 2A, 2C, 2D, 2E, 2F, 2G, 3B, 3C, 4B, 4D & 4E	Nov. 28	Dec. 2	One antlered deer.
<i>Deer, Regular firearms (Antlered & Antlerless)</i> ² WMUs 2A, 2C, 2D, 2E, 2F, 2G, 3B, 3C, 4B, 4D & 4E	Dec. 3	Dec. 10	One antlered, and an antlerless deer with each required antlerless license.
<i>Deer, Special firearms (Antlerless only)</i> (Statewide) Only Junior and Senior License Holders, ³ Commission Disabled Person Permit Holders (to use a vehicle as a blind), and Residents serving on active duty in the U.S. Armed Forces, or in the U.S. Coast Guard, with required antlerless license	Oct. 20	Oct. 22	An antlerless deer with each required antlerless license.
<i>Deer, Muzzleloading (Antlerless only)</i> (Statewide)	Oct. 15	Oct. 22	An antlerless deer with each required antlerless license.
<i>Deer, Flintlock (Antlered or Antlerless)</i> ² (Statewide)	Dec. 26	Jan. 16, 2012	One antlered, or one antlerless-plus an additional antlerless deer with each required antlerless license.

WHITE-TAILED DEER – (Continued)

Species	First Day	Last Day	Season Limit
<i>Deer, Flintlock (Antlered or Antlerless)</i> ² WMUs 2B, 5C & 5D	Dec. 26	Jan. 28, 2012	An antlerless deer with each required antlerless license.
<i>Deer, Extended Regular firearms (Antlerless)</i> WMUs 2B, 5C & 5D	Dec. 26	Jan. 28, 2012	An antlerless deer with each required antlerless license.
<i>Deer, Antlerless</i> (Letterkenny Army Depot, Franklin County and New Cumberland Army Depot, York County and Fort Detrick, Raven Rock Site, Adams County)	Hunting is permitted on days established by the United States Department of the Army.		An antlerless deer with each required antlerless license.

BLACK BEAR

Species	First Day	Last Day	Daily Limit	Season Limit
<i>Bear, Archery</i> ⁴ (Statewide)	Nov. 14	Nov. 18	1	1
<i>Bear, Regular firearms</i> ⁴ (Statewide)	Nov. 19	Nov. 23	1	1
<i>Bear, Extended firearms</i> ⁴ WMUs 3A, 3C, and Portions of WMU 3B, East of Rt. 14 from Troy to Canton, East of Rt. 154 from Canton to Rt. 220 at Laporte and East of Rt. 42 from Laporte to Rt. 118 and that portion of 4E, East of Rt. 42.	Nov. 28	Dec. 3	1	1
Portions of WMUs 2G in Lycoming and Clinton counties and 3B in Lycoming County that lie North of the West Branch of the Susquehanna River from the Rt. 405 Bridge, West to Rt. 15 at Williamsport, Rt. 15 to Rt. 220, and North of Rt. 220 to the Mill Hall exit, North of SR 2015 to Rt. 150; East of Rt. 150 to Lusk Run Rd. and South of Lusk Run Rd. to Rt. 120, Rt. 120 to Veterans Street Bridge to SR 1001; East of SR 1001 to Croak Hollow Rd., South of Croak Hollow Rd. to Rt. 664 (at Swisssdale), South of Rt. 664 to Little Plum Rd. (the intersection of SR 1003), South of SR 1003 to SR 1006, South of SR 1006 to Sulphur Run Rd., South of Sulphur Run Rd. to Rt. 44, East of Rt. 44 to Rt. 973, South of Rt. 973 to Rt. 87, West of Rt. 87 to Rt. 864, South of Rt. 864 to Rt. 220 and West of Rt. 220 to Rt. 405 and West of Rt. 405 to the West Branch of the Susquehanna River.				
<i>Bear, Extended firearms</i> ⁴ WMUs 3D, 4C, 4D, 4E, 5B & 5C	Nov. 30	Dec. 3	1	1

ELK

Species	First Day	Last Day	Daily Limit	Season Limit
<i>Elk, Regular firearms</i> ⁵ <i>(Antlered & Antlerless)</i>	Oct. 31	Nov. 5	1	One elk with required license
<i>Elk, Special Conservation</i> ⁵ <i>(Antlered & Antlerless)</i>	Sep. 1	Nov. 5	1	One elk with required license
<i>Elk, Extended firearms</i> ⁵ <i>(Antlered & Antlerless)</i>	Nov. 7	Nov. 12	1	One elk with required license

FUR TAKING - TRAPPING

Species	First Day	Last Day	Daily Limit	Season Limit
<i>Minks and Muskrats</i> <i>(Statewide)</i>	Nov. 19	Jan. 8, 2012		Unlimited
<i>Beaver</i> <i>(Statewide)</i>	Dec. 26	Mar. 31, 2012		
WMUs 1A, 1B, 3A & 3C (Combined)			20	40
WMUs 2A, 2B, 2D, 2E, 2F, 3B & 3D (Combined)			20	20
WMUs 2C, 2G, 4A, 4B, 4C, 4D, 4E, 5A, 5B, 5C & 5D (Combined)			5	5
<i>Coyotes, Foxes, Opossums, Raccoons, Skunks, Weasels - (Statewide)</i>	Oct. 23	Feb. 19, 2012		Unlimited
<i>Coyotes & Foxes - (Statewide)</i> <i>(Cable restraint devices may be used)</i>	Dec. 26	Feb. 19, 2012		Unlimited
<i>Bobcat (with appropriate permit)</i> WMUs 2A, 2C, 2E, 2F, 2G, 3A, 3B, 3C, 3D, 4A, 4D & 4E	Dec. 17	Jan. 8, 2012	1	1
<i>Fisher (with appropriate permit)</i> WMUs 2C, 2D, 2E & 2F	Dec. 17	Dec. 22	1	1

FUR TAKING - HUNTING

Species	First Day	Last Day	Daily Limit	Season Limit
<i>Coyotes - (Statewide)</i>				Unlimited
<i>Coyotes - (During any big game season)</i>				
<i>Opossums, Skunks, Weasels (Statewide)</i>				
<i>Raccoons and Foxes - (Statewide)</i>	Oct. 22	Feb. 18, 2012		Unlimited
<i>Bobcat (with appropriate permit)</i>				
WMUs 2A, 2C, 2E, 2F, 2G, 3A, 3B, 3C, 3D, 4A, 4D & 4E	Dec. 17	Jan. 7, 2012	1	1

No open seasons on other wild birds or wild mammals.

¹ Only persons who possess a special wild turkey license as provided for in section 2709 of the act (relating to license costs and fees) may take a second spring gobbler during the hunting license year; all other persons, including mentored youth hunters, may take only one spring gobbler. A maximum of 2 gobblers per license year may be taken by any combination of licenses or exceptions for mentored youth.

² Only one antlered deer (buck) may be taken during the hunting license year.

³ Includes persons who have reached or will reach their 65th birthday in the year of the application for the license and hold a valid adult license or qualify for license and fee exemptions under section 2706 of the act (relating to resident license and fee exemptions).

⁴ Only one bear may be taken during the hunting license year.

⁵ Only one elk may be taken during the hunting license year.

C. Adoption of proposed amendments to §141.28.

Commentary: To effectively manage the wildlife resources of this Commonwealth, the Game Commission proposed at its February 1, 2011 meeting, to amend §141.28 (relating to wild pheasant recovery areas) to create and define the geographic location of the Franklin County Wild Pheasant Recovery Area (WPRA).

Recommendation: The Executive Director and staff recommend FINAL ADOPTION of this amendment to 58 Pa. Code as shown on EXHIBIT "C."

Action:

EXHIBIT "C"

CHAPTER 141. HUNTING AND TRAPPING

Subchapter B. SMALL GAME

§141.28. Wild pheasant recovery areas.

(a) *Definition.* For the purpose of this section, the phrase "wild pheasant recovery area" (WPRA) includes and is limited to the following geographic locations.

* * * * *

(5) *Franklin County WPRA.* That Portion of Wildlife Management Units 4A and 5A in Franklin County from PA Rt. 30 on the northern border to the Pennsylvania/Maryland state border on the southern border, and from Cove Mountain on the western border to the towns of Laurich and Williamson and the Conococheague Creek on the eastern border. The WPRA is bounded on the north by PA Rt. 30 (Lincoln Highway). Beginning at the town of Fort Loudon at the intersection of PA Rt. 30 (Lincoln Highway) and PA Rt. 75, proceed east on PA Rt. 30 (Lincoln Highway), through St. Thomas, and continue east to Laurich. Just east of Laurich, proceed south along Back Creek to SR3012 (Jack Road). Proceed west along SR3012 (Jack Road), then south along Weber Road. Continue south and southwest along Weber Road to the intersection of Weber, Grapevine and Jacks Mill Roads. Proceed southwest along Grapevine Road and then northwest to intersection with SR 3013. Turn south onto SR 3013 (St Thomas Williamson Road) and then west onto State Rt. 995. Proceed west and then south on State Rt. 995 through Williamson to the West Branch of the Conococheague Creek (northeast of Welsh Run). Proceed along the West Branch of the Conococheague Creek to the confluence with Conococheague Creek. Follow the Conococheague Creek south to the Pennsylvania/Maryland state border. Proceed west along the PA/MD state border to State Rt. 456. Proceed northeast along State Rt. 456 to State Route 16. Proceed east on State Route 16 to Mountain Road. Proceed northeast on Mountain Road to State Rt. 75. Proceed northwest on State Rt. 75 to the intersection of State Rt. 75 and State Rt. 30 at Fort Loudon.

* * * * *

BUREAU OF WILDLIFE PROTECTION

ADOPTED RULE MAKING

A. Adoption of proposed amendments to §131.2.

Commentary: To effectively manage the wildlife resources of this Commonwealth, the Game Commission proposed at its February 1, 2011 meeting, to amend §131.2 (relating to definitions) by creating, amending and deleting certain definitions.

Recommendation: The Executive Director and staff recommend FINAL ADOPTION of this amendment to 58 Pa. Code as shown on EXHIBIT "A."

Action:

EXHIBIT "A"

CHAPTER 131. PRELIMINARY PROVISIONS

§131.2. Definitions.

In addition to the definitions contained in section 102 of the act (relating to definitions), the following words and terms, when used in this part or in the act, have the following meanings, unless the context clearly indicates otherwise:

* * * * *

Antlered deer -

(i) In Wildlife Management Units 1A, 1B, 2A, 2B and 2D, a deer having three or more points on one antler, not including brow tines, which is the point immediately above the antler burr.

* * * * *

Plugged shotgun - For the purpose of section 2308(a)(4) of the act (relating to unlawful devices and methods), any shotgun containing a one-piece plug, stop or filler in the magazine to reduce ammunition capacity that is incapable of removal without disassembling the shotgun or magazine.

* * * * *

Venison - For the purpose of section 2312 of the act (relating to buying and selling game), any meat derived from a white-tailed deer.

B. Adoption of proposed amendments to §141.1.

Commentary: To effectively manage the wildlife resources of this Commonwealth, the Game Commission proposed at its February 1, 2011 meeting, to amend §141.1 (relating to special regulations areas) to expand the shotgun/muzzleloader single projectile exception to bear hunters and also remove the now defunct baiting provisions.

Recommendation: The Executive Director and staff recommend FINAL ADOPTION of this amendment to 58 Pa. Code as shown on EXHIBIT "B."

Action:

EXHIBIT "B"

CHAPTER 141. HUNTING AND TRAPPING

Subchapter A. GENERAL

§141.1. Special regulations areas.

* * * * *

(d) *Permitted acts.* It is lawful to:

(1) Except in Philadelphia County, Ridley Creek State Park, Delaware County and Tyler State Park, Bucks County, hunt and kill deer and bear through the use of a muzzleloading long gun or a shotgun, at least .410 gauge (rifled barrels permitted), including semiautomatics which, upon discharge, propel a single projectile.

* * * * *

(5) Harvest more than one deer at a time when multiple harvests of deer per day are authorized without first lawfully tagging previous harvests, provided all deer harvested are lawfully tagged immediately thereafter.

C. Adoption of proposed amendments to §141.4.

Commentary: To effectively manage the wildlife resources of this Commonwealth, the Game Commission proposed at its February 1, 2011 meeting, to amend §141.4 (relating to hunting hours) by placing the current hunting hours table and migratory bird hunting hours table to accurately reflect the dates and hours of legal hunting for the 2011-2012 hunting license year and also by removing the limitations prohibiting the hunting of woodchuck, opossum, skunk and weasel during legal hunting hours of the spring gobbler season.

Recommendation: The Executive Director and staff recommend FINAL ADOPTION of this amendment to 58 Pa. Code as shown on EXHIBIT "C."

Action:

EXHIBIT "C"

CHAPTER 141. HUNTING AND TRAPPING

Subchapter A. GENERAL

§141.4. Hunting hours.

Except as otherwise provided, wild birds and animals may be hunted 1/2 hour before sunrise to 1/2 hour after sunset.

* * * * *

(2) Raccoon, fox, skunk, opossum, coyote, bobcat and weasel may be hunted any hour, day or night, except during the restricted periods in paragraph (1).

* * * * *

*(See Pennsylvania Meridian Map, Hunting Hours and
Migratory Game Bird Hunting Hours Tables)*

**HUNTING HOURS TABLE
FOR JUNE 26, 2011 THROUGH JUNE 30, 2012**

Dates	Begin A.M.	End P.M.	Dates	Begin A.M.	End P.M.
June 26 – July 2	5:06	9:03	Jan. 1 – 7	6:48	5:14
July 3 – 9	5:10	9:01	Jan. 8 – 14	6:51	5:22
July 10 – 16	5:15	8:58	Jan. 15 – 21	6:47	5:30
July 17 – 23	5:21	8:53	Jan. 22 – 28	6:47	5:37
July 24 – 30	5:27	8:47	Jan. 29 – Feb. 4	6:42	5:46
July 31 – Aug. 6	5:33	8:39	Feb. 5 – 11	6:34	5:54
Aug. 7 – 13	5:40	8:30	Feb. 12 – 18	6:28	6:02
Aug. 14 – 20	5:47	8:21	Feb. 19 – 25	6:19	6:09
Aug. 21 – 27	5:53	8:10	Feb. 26 – Mar. 3	6:09	6:19
Aug. 28 – Sept. 3	6:00	7:59	Mar. 4 – 10	5:59	6:26
Sept. 4 – 10	6:07	7:48	Mar. 11 – 17* begins	6:48	7:34
Sept. 11 – 17	6:13	7:36	Mar. 18 – 24	6:36	7:41
Sept. 18 – 24	6:20	7:25	Mar. 25 – 31	6:25	7:48
Sept. 25 – Oct. 1	6:27	7:13	Apr. 1 – 7	6:14	7:55
Oct. 2 – 8	6:34	7:02	Apr. 8 – 14	6:03	8:02
Oct. 9 – 15	6:41	6:51	Apr. 15 – 21	5:52	8:10
Oct. 16 – 22	6:48	6:41	Apr. 22 – 28	5:42	8:17
Oct. 23 – 29	6:56	6:32	Apr. 29 – May 5	5:33	8:24
Oct. 30 – Nov. 5	7:04	6:24	May 6 – 12	5:24	8:31
Nov. 6 – 12* ends	6:12	5:13	May 13 – 19	5:17	8:38
Nov. 13 – 19	6:20	5:08	May 20 – 26	5:11	8:44
Nov. 20 – 26	6:28	5:08	May 27 – June 2	5:06	8:50
Nov. 27 – Dec. 3	6:35	5:04	June 3 – 9	5:02	8:59
Dec. 4 – 10	6:41	5:05	June 10 – 16	5:02	8:59
Dec. 11 – 17	6:46	5:06	June 17 – 23	5:03	9:02
Dec. 18 – 24	6:50	5:07	June 24 – 30	5:05	9:03
Dec. 25 – 31	6:52	5:11	*Daylight Saving Time		

MIGRATORY GAME BIRD HUNTING HOURS TABLE

Dates	Begin A.M.	End P.M.	Dates	Begin A.M.	End P.M.
Aug. 28 – Sept. 3	6:00	7:29	Dec. 25 – 31	6:52	4:41
Sept. 4 – 10	6:07	7:18	Jan. 1 – 7	6:48	4:44
Sept. 11 – 17	6:13	7:06	Jan. 8 – 14	6:51	4:52
Sept. 18 – 24	6:20	6:55	Jan. 15 – 21	6:47	5:00
Sept. 25 – Oct. 1	6:27	6:43	Jan. 22 – 28	6:47	5:07
Oct. 2 – 8	6:34	6:32	Jan. 29 – Feb. 4	6:42	5:16
Oct. 9 – 15	6:41	6:21	Feb. 5 – 11	6:34	5:24
Oct. 16 – 22	6:48	6:11	Feb. 12 – 18	6:28	5:32
Oct. 23 – 29	6:56	6:02	Feb. 19 – 25	6:19	5:39
Oct. 30 – Nov. 5	7:04	5:54	Feb. 26 – Mar. 3	6:09	5:49
Nov. 6 – 12*ends	6:12	4:43	Mar. 4 – 10	5:59	5:56
Nov. 13 – 19	6:20	4:38	Mar. 11 – 17*begins	6:48	7:04
Nov. 20 – 26	6:28	4:38	Mar. 18 – 24	6:36	7:11
Nov. 27 – Dec. 3	6:35	4:34	Mar. 25 – 31	6:25	7:18
Dec. 4 – 10	6:41	4:35	Apr. 1 – 7	6:14	7:25
Dec. 11 – 17	6:46	4:36	Apr. 8 – 14	6:03	7:32
Dec. 18 – 24	6:50	4:37	*Daylight Saving Time		

D. Adoption of proposed amendments to §141.20.

Commentary: To effectively manage the wildlife resources of this Commonwealth, the Game Commission proposed at its February 1, 2011 meeting, to amend §141.20 (relating to protective material required) to restructure the various fluorescent orange requirements into a more comprehensible set of requirements without altering their substantive standards.

Recommendation: The Executive Director and staff recommend FINAL ADOPTION of this amendment to 58 Pa. Code as shown on EXHIBIT "D."

Action:

EXHIBIT "D"

CHAPTER 141. HUNTING AND TRAPPING

Subchapter A. GENERAL

§141.20. Protective material required.

* * * * *

(b) Permitted acts. It is lawful to:

* * * * *

(1) Hunt without wearing daylight fluorescent orange-colored material for applicable wildlife during the following seasons:

- (i) All crow seasons.
- (ii) All dove seasons.
- (iii) All waterfowl seasons.
- (iv) All falconry small game seasons.
- (v) All flintlock muzzleloading deer seasons.
- (vi) All archery deer seasons, except as otherwise provided in paragraphs (3) (ii) and (4) (ii).
- (vii) All archery bear seasons, except as otherwise provided in paragraph (3) (iii).
- (viii) All furbearer seasons, except coyote seasons.
- (ix) All coyote seasons, except during the respective portion of any coyote season that runs concurrent with the legal hunting hours of any special firearms deer season, regular firearms deer season, regular firearms bear season or extended firearms bear season within each wildlife management unit, when the requirements of subsection (a) remain applicable.
- (x) All spring turkey seasons.

(2) Hunt for woodchucks during any woodchuck season while wearing a hat made of solid daylight fluorescent orange-colored material on the head only.

(3) Move about or relocate while wearing a hat containing a minimum of 100 square inches of solid daylight fluorescent orange-colored material on the head only and be stationary without wearing the required orange-colored material when hunting for applicable wildlife during the following seasons:

(i) All fall turkey seasons in wildlife management units 1A, 1B, 2A, 2B, 5B, 5C and 5D.

(ii) The respective portions of any archery deer season that runs concurrent with any fall turkey season within each wildlife management unit.

(iii) The respective portions of any archery bear season that runs concurrent with any fall turkey season within each wildlife management unit.

(4) Move about or relocate while in compliance with subsection (a) and while stationary place a minimum of 100 square inches of daylight fluorescent orange-colored material within 15 feet of the hunter's location so it is visible in a 360 degree arc when hunting for applicable game or wildlife during the following seasons:

(i) All fall turkey seasons in wildlife management units 2C, 2D, 2E, 2F, 2G, 3A, 3B, 3C, 3D, 4A, 4B, 4C, 4D, 4E and 5A.

(ii) The respective portions of any archery deer season that runs concurrent with any early muzzleloading deer season or any special firearms deer season within each wildlife management unit.

* * * * *

E. Adoption of proposed amendments to §141.41.

Commentary: To effectively manage the wildlife resources of this Commonwealth, the Game Commission proposed at its February 1, 2011 meeting, to amend §141.41 (relating to general) to remove redundant and inconsistent language concerning mistake kills.

Recommendation: The Executive Director and staff recommend FINAL ADOPTION of this amendment to 58 Pa. Code as shown on EXHIBIT "E."

Action:

EXHIBIT "E"

CHAPTER 141. HUNTING AND TRAPPING

Subchapter C. BIG GAME

§141.41. General.

It is unlawful to:

(1) Fail, within 10 days of the kill, to complete the report card supplied with the hunting license for reporting big game killed and mail the report card to the Commission in Harrisburg or by any other method designated by the Director.

(2) Receive a DMAP permit without reporting in the manner prescribed on the permit.

(3) Harvest more than one deer at a time before lawfully tagging a deer previously harvested when multiple harvests of deer per day are authorized, except as otherwise provided in §141.1(relating to special regulations areas).

F. Adoption of proposed amendments to §§141.62, 141.63 and adding 141.69.

Commentary: To effectively manage the wildlife resources of this Commonwealth, the Game Commission proposed at its February 1, 2011 meeting, to amend §§141.62 (relating to beaver trapping) and 141.63 (relating to definitions) and add §141.69 (relating to artificial cubbies) to define and clarify the standards relating to certain trapping activities.

Recommendation: The Executive Director and staff recommend FINAL ADOPTION of this amendment to 58 Pa. Code as shown on EXHIBIT "F."

Action:

EXHIBIT "F"

CHAPTER 141. HUNTING AND TRAPPING

Subchapter D. FURBEARERS

§141.62. Beaver trapping.

* * * * *

(b) Unlawful acts. It is unlawful to:

* * * * *

(4) Set, tend or operate more than a combined Statewide total of 20 traps or snares no more than 10 of which may be traps. No more than two of the traps may be body gripping traps except in Wildlife Management Units 1B, 3A, 3B, 3C and 3D where the two body gripping trap limit does not apply.

* * * * *

§141.63. Definitions.

In addition to the definitions contained in the act and this part, the following words, when used in the enforcement of section 2361 of the act (relating to unlawful acts concerning taking of furbearers) have the following meanings, unless the context clearly indicates otherwise:

Artificial cubby - A baited enclosure constructed of natural or artificial material that is designed to house and corral a furbearer into a body-gripping trap.

* * * * *

Foot encapsulating trap - A device that has all triggering and restraining mechanisms enclosed by a housing which, once set, allows access to the triggering mechanism through a single opening not to exceed 2 inches in diameter or diagonally and is anchored by a swivel-mounted anchoring mechanism.

* * * * *

§141.69. Artificial cubbies.

Furtakers are permitted to trap furbearers through the use of artificial cubbies when the following conditions are met:

(1) The artificial cubby is placed within an established watercourse, waterway, marsh, pond or dam.

(2) The entrance to the artificial cubby does not exceed 50 square inches.

(3) The triggering mechanism of the trap is recessed within the artificial cubby at least 7 inches from the entrance.

(4) The artificial cubby is anchored in a manner so that it cannot be moved or rolled.

G. Adoption of proposed amendments to §143.67.

Commentary: To effectively manage the wildlife resources of this Commonwealth, the Game Commission proposed at its February 1, 2011 meeting, to amend §143.67 (relating to application) to grant the Director the authority to establish the application deadlines for bear licenses at such periods as he determines.

Recommendation: The Executive Director and staff recommend FINAL ADOPTION of this amendment to 58 Pa. Code as shown on EXHIBIT "G."

Action:

EXHIBIT "G"

CHAPTER 143. HUNTING AND FURTKER LICENSES

Subchapter D. BEAR LICENSES

§143.67. Application.

* * * * *

(b) Applications for bear licenses shall be submitted in accordance with periods set by the Director by persons who hold a valid regular hunting license.

BUREAU OF WILDLIFE HABITAT MANAGEMENT

REAL ESTATE

A. Acquisition

Contract No. 3582, State Game Land No. 87, Clearfield County

Commentary:

RLF Deemer Properties, LLC is offering for sale 9,306 +/- acres in Bell and Greenwood Townships, Clearfield County adjoining State Game Land No. 87 (Exhibit RED 1). The option price is \$5,583,600 lump sum payment to be paid with funds by third party commitments for compensation of habitat and recreational losses from previously approved Commission actions on oil/gas and mineral recovery leases. The Grantor shall reserve all rights, title and interest to timber harvested through January 1, 2017 by a prior Standing Timber Sale Agreement. The timber reservation includes all white pine and hardwood timber having a DBH of 12" or greater at time of harvest, except hemlock, beech, hickory, aspen and trees which provide wildlife habitat such as den trees and snags. The Grantor also reserves all remaining rights not previously excepted and reserved relating to title and interest to all minerals, oil/gas on or under the premises. Approximately 5,000 acres of the site consists of natural upland hardwood forest. The remaining approximately 4,000 acres of the site consists of non-timbered land currently or historically cleared for surface coal mining and natural gas development. The USFWS National Wetlands Inventory map identifies numerous natural and manmade wetland areas on the property. There are numerous high quality streams on the property, which support populations of cold water fish. Settlement on the property shall be held no later than July 29, 2011. State Game Land No. 87 currently has 1,225 acres.

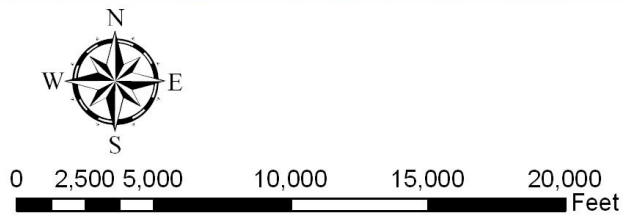
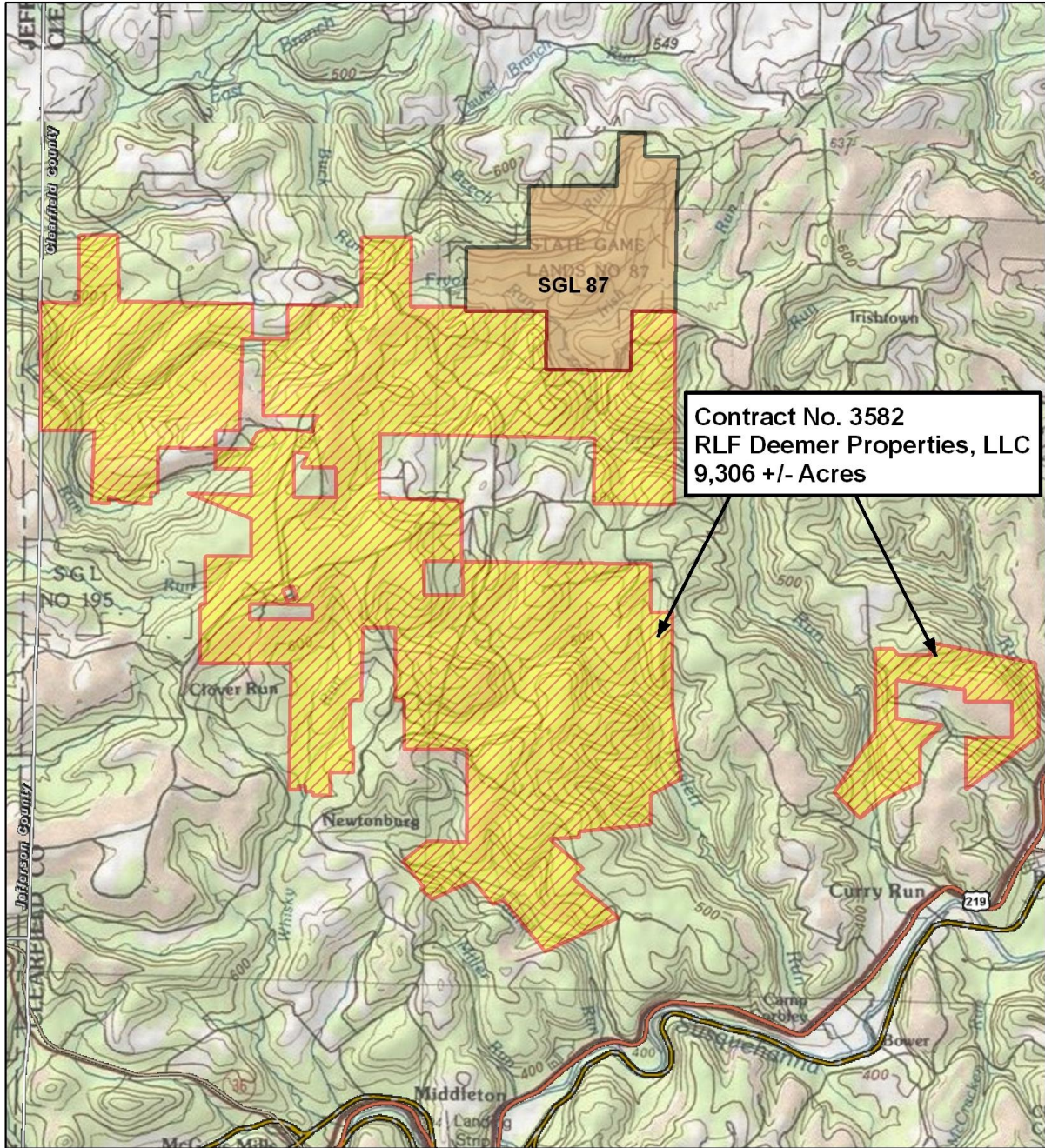
Contract No. 3583, State Game Land No. 217, Carbon County

Commentary:

Wildlands Conservancy, Inc. is offering for sale 172 +/- acres in East Penn Township, Carbon County, adjacent to State Game Land No. 217 (Exhibit RED 2). The option price is \$137,000 lump sum payment to be paid with funds from third party commitments for compensation of habitat and recreational losses from previously approved Commission actions on oil/gas and mineral recovery leases. The property consists of grassland and woodland habitat. On the ridge top is a pitch pine-oak-heath rocky summit community characterized by sparse vegetation with numerous bedrock outcrops. Dominant flora is pitch pine, scrub oak, chestnut oak, common juniper, lowbush blueberry, sweet fern, black huckleberry, Pennsylvania sedge, poverty-grass and common hairgrass, as well as mosses and lichens. The property lies west of the adjacent Lehigh Gap Nature Preserve. There is a perpetual easement on approximately 20 acres which is granted to the United States of America for the Appalachian National Scenic Trail. The tract provides access to the north side of the Blue Mountain and has road frontage along West Sunset Road.

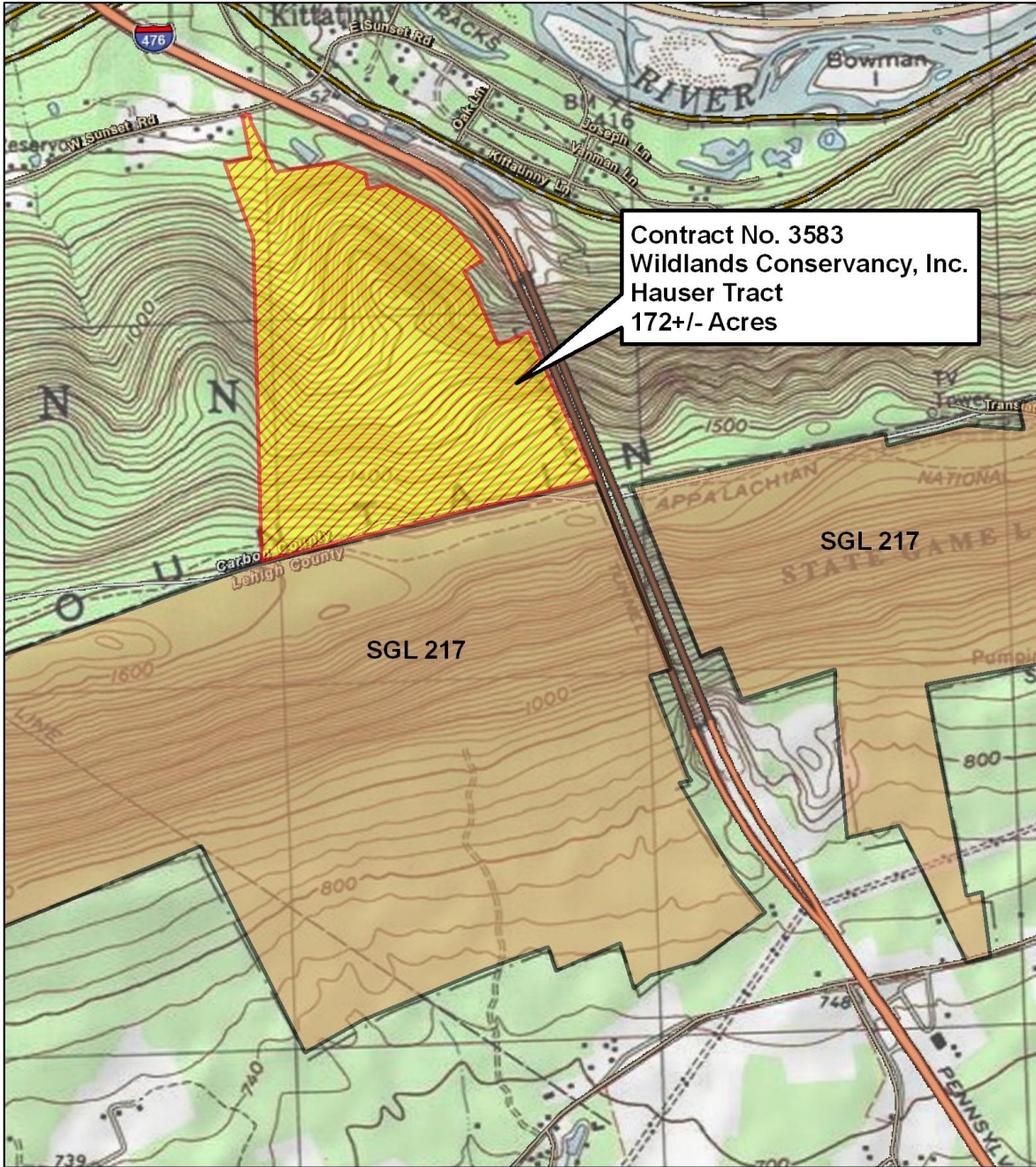
Recommendation: The Executive Director and staff recommend the acquisitions listed above be accepted and the Commission authorize the Bureau of Wildlife Habitat Management to proceed with the acquisition of these tracts.

Action:



Contract No. 3582
 RLF Deemer Properties, LLC
 9,306 +/- Acres

RED 1
State Game Land No. 87
 RLF Deemer Properties, LLC
 9,306 +/- Acres
 Bell & Greenwood Townships
 Clearfield County
 Northcentral Region



Contract No. 3583
 Wildlands Conservancy, Inc.
 Hauser Tract
 172+/- Acres



RED 2
State Game Land No. 217
 Wildlands Conservancy, Inc.
 Hauser Tract
 172 +/- ACRES
 East Penn Township,
 Carbon County
 Southeast Region

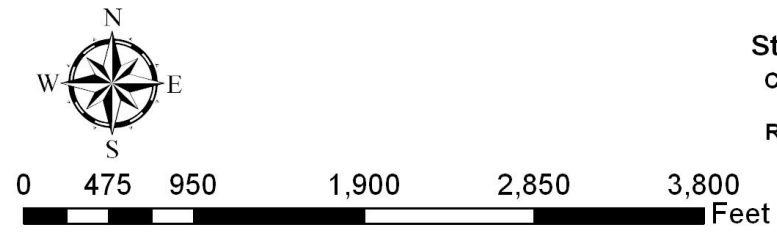
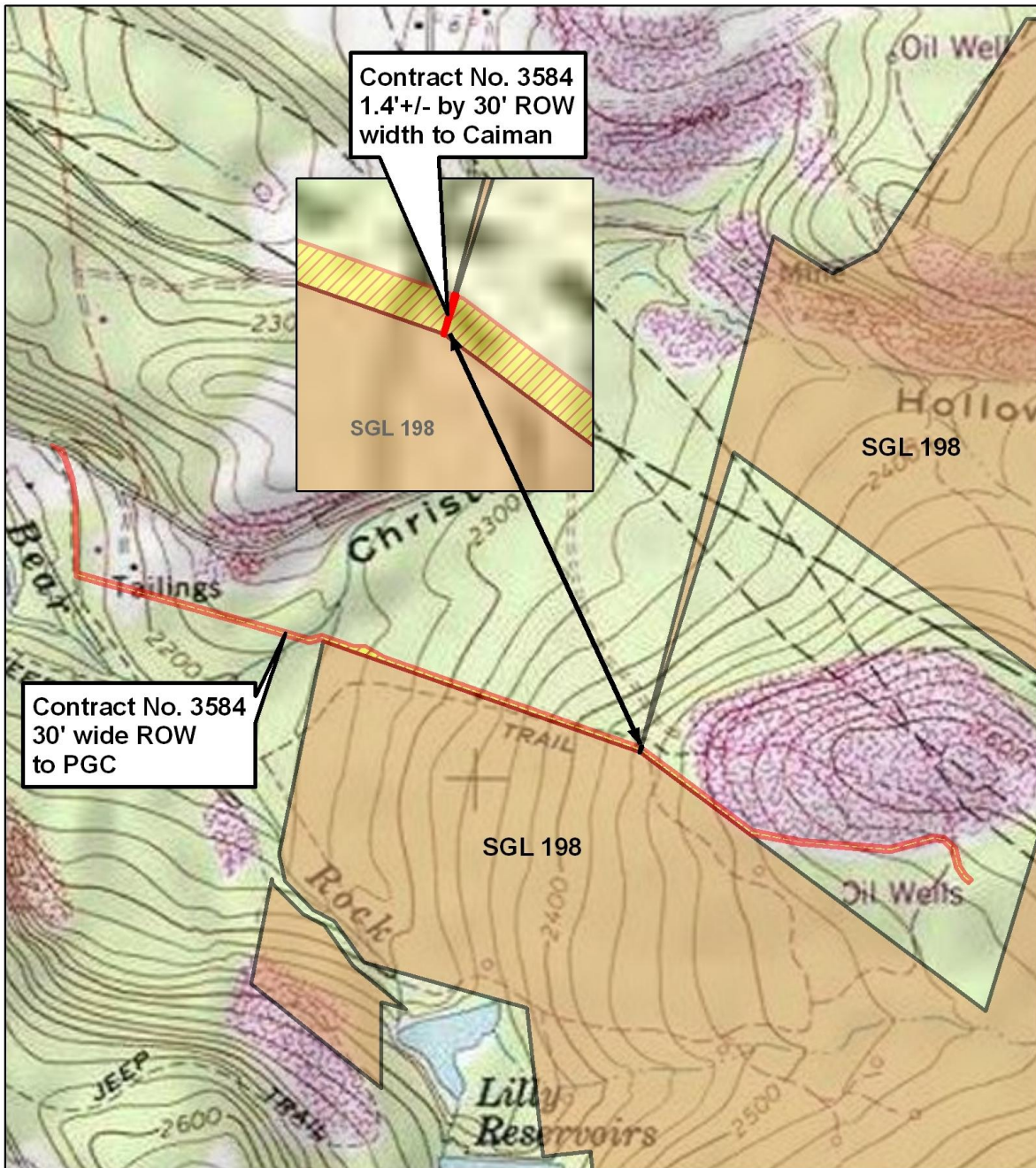
B. Land Exchange

Contract No. 3584, State Game Land No. 198, Cambria County

Commentary: Caiman PENN Midstream LLC has proposed a land exchange which would provide the Commission with an access road into State Game Land No. 198 in Washington Township, Cambria County in exchange for a pipeline Right-of-Way and the use of a portion of the access road Caiman PENN is conveying to the Commission (Exhibit RED 3). The access road shall be 30 feet wide and 4,670 feet, more or less in length and provides access from T.R. 417, Memorial Drive. The Commission shall provide a 30 foot wide Right-of-Way that is 1.4 feet long. The Commission shall have administrative access and shall provide for periodic wildlife protection patrols on the access road. The road shall be open during major hunting seasons.

Recommendation: The Executive Director and staff recommend the exchange listed above be accepted and the Commission authorize the Bureau of Wildlife Habitat Management to proceed with the exchange.

Action:



RED 3
State Game Land No. 198
 Caiman Penn Midstream LLC,
 "Caiman"
 ROW-Access Road Exchange
 Washington Township
 Cambria County
 Southcentral Region

OIL/GAS & MINERALS

C. Restricted Surface Use Oil/Gas Production Agreement, State Game Land No. 114, Lycoming County

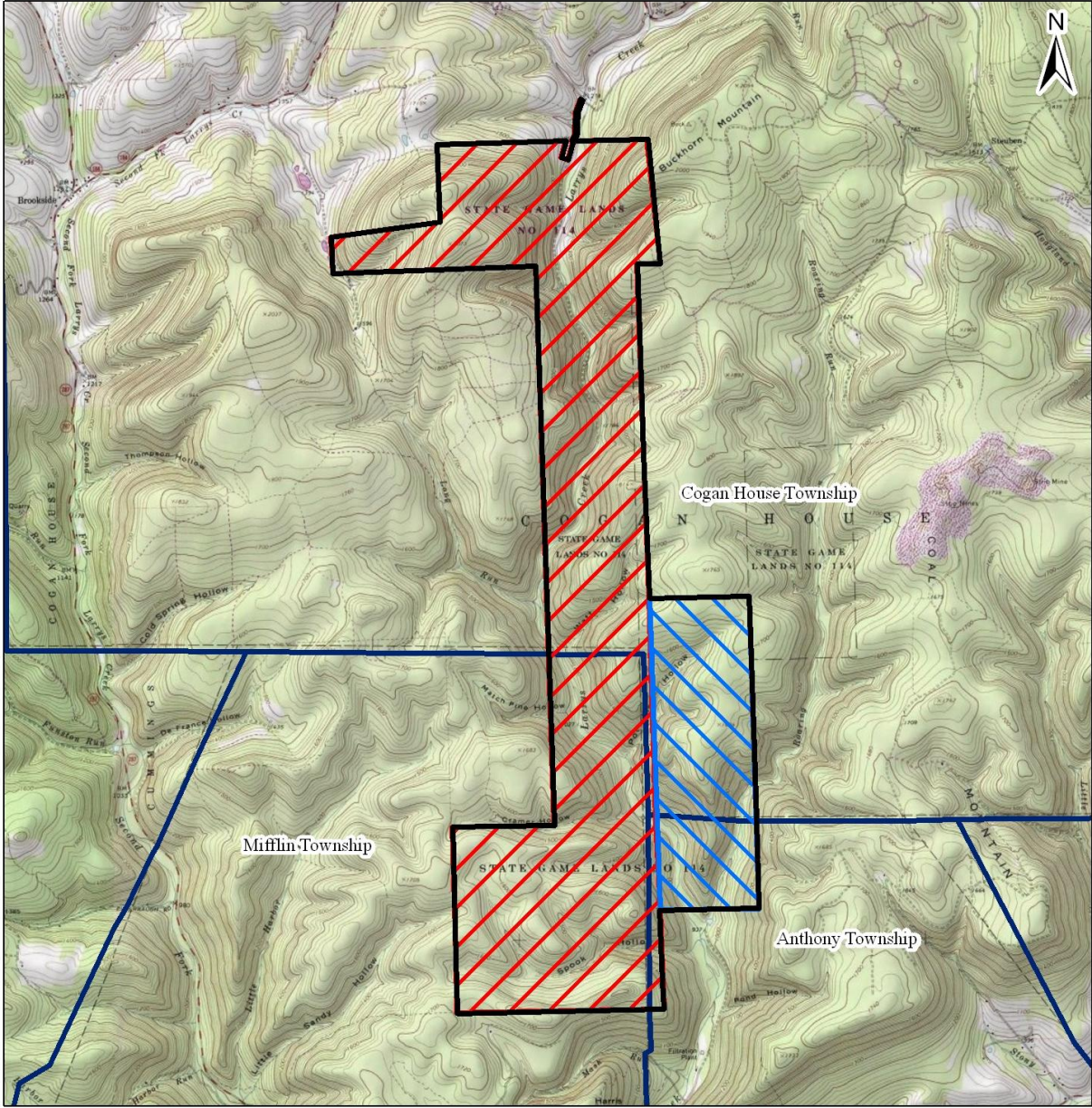
Commentary: Anadarko E&P Company, LP (Anadarko) and EXCO Resources (PA), LLC (EXCO) have requested that the Commission offer its oil and gas ownership under all of State Game Land No. 114 for restricted surface use production. The proposed two restricted surface use tracts, containing 571 +/- acres for EXCO and 2,310.5 +/- acres for Anadarko, are located in Anthony, Cogan House, and Mifflin Townships, Lycoming County (Exhibit OGM 1). The agreement offers are being made after staff evaluation of prospective bidders based on currently existing lease holds surrounding the State game lands.





Both EXCO and Anadarko have initiated well drilling and development programs on private lands adjacent to the State game land. Both operators have the ability to unitize and produce the Commission's oil/gas reserve by developing well locations on private lands and directional drilling beneath the State game lands. Therefore, both of the agreements prohibit any well pad construction or drilling on the State game lands, and further restrict surface uses from infrastructure development on the State game lands via pipelines, access roads, and geophysical testing in an effort to prudently develop the Commission's oil/gas reserve and simultaneously protect the wildlife resources and recreational uses on State Game Land No. 114. The agreements include a 5 year primary term, a \$3,000 per acre up-front bonus payment, and an initial royalty rate of 18% with a step royalty increase of 20% of the gas production upon each well's initial payback having been reached.

The sum of the bonus payment and rentals (\$8,644,500) will be deposited into the Game Fund and/or deposited into an interest bearing escrow account for future purchase of wildlife habitats and lands acceptable to the Commission. All royalties will be directly deposited into the Game Fund. Oil/gas development will be regulated by the Commonwealth's oil/gas regulations and the Commission's standard restricted surface use Oil/Gas Production Agreement.

Recommendation: The Executive Director and staff recommend that this restricted surface use Oil/Gas Production Agreement be approved and that the Commission authorize the Bureau of Wildlife Habitat Management to proceed with the agreement as listed above.

Action:



-  Anadarko-Tract 114A-11 (2,310.5 +/- Acres)
-  EXCO-Tract 114B-11 (571 +/- Acres)
-  Game Land Boundary
-  Township Boundary

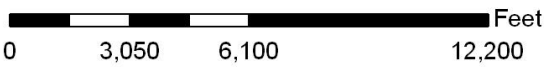


Exhibit OGM 1
 PENNSYLVANIA GAME COMMISSION
State Game Lands No. 172
Anadarko & EXCO
Restricted Surface Use
Oil/Gas Production Area Map
Tracts 114A-11 & 114B-11
 Anthony, Cogan House, & Mifflin Townships
 Lycoming County
 Northcentral Region

D. Restricted Surface Use Oil/Gas Production Agreement, State Game Land No. 172, Bradford County

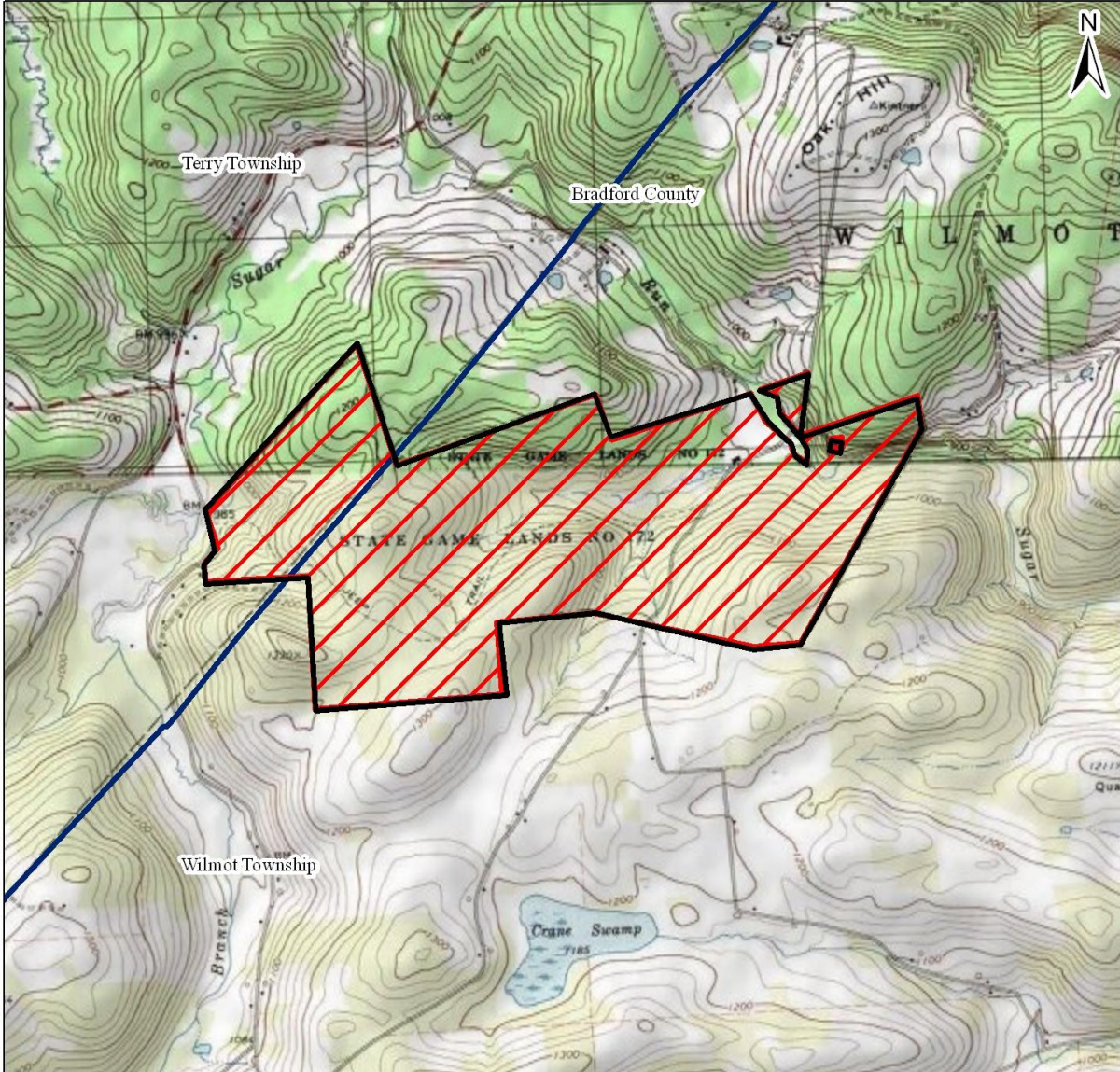
Commentary: Chesapeake Appalachia, LLC of Oklahoma City, OK requested the Commission offer its oil and gas ownership under all of State Game Land No. 172. The proposed tract, containing a total of 722.3 acres, is located in Terry and Wilmot Townships, Bradford County (Exhibit OGM 2).


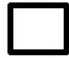

The terms of the agreement are a paid up, 5 year, restricted surface use Oil/Gas Production Agreement, a \$5,000 per acre bonus payment and a 20% royalty. Chesapeake Appalachia, LLC has a strong lease position surrounding State Game Land No. 172 and has initiated well drilling and development programs on private lands adjacent to the State game land. Chesapeake Appalachia has the ability to unitize the Commission's oil/gas reserve by developing well locations on private lands and directional drilling beneath the State game lands. Therefore, the agreement prohibits any well pad construction or drilling on the State game lands, and further restricts surface uses from infrastructure development on the State game lands via pipelines, access roads, and geophysical testing in an effort to safeguard the prudent development of the Commission's oil/gas reserve and simultaneously protect the wildlife resources and recreational use of State Game Land No. 172.

The sum of bonus payment and rentals (\$3,611,500) will be deposited into the Game Fund and/or deposited into an interest bearing escrow account for future purchase of wildlife habitats and lands acceptable to the Commission. All royalties will be directly deposited into the Game Fund. Oil and gas development will be regulated by the Commonwealth's oil/gas regulations and the Commission's standard restricted surface use Oil/Gas Production Agreement.

Recommendation: The Executive Director and staff recommend that this restricted surface use Oil/Gas Production Agreement be approved and that the Commission authorize the Bureau of Wildlife Habitat Management to proceed with the agreement as listed above.

Action:



-  Tract 172A-11 (722.3 Acres)
-  Game Land Boundary
-  Township Boundary

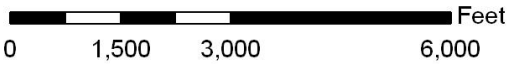


Exhibit OGM 2
 PENNSYLVANIA GAME COMMISSION
State Game Lands No. 172
Chesapeake Appalachia, LLC
Restricted Surface Use
Oil/Gas Production Area Map
Tract 172A-11
 Terry & Wilmot Townships
 Bradford County
 Northeast Region

E. Oil/Gas Production Agreement/Land Exchange, State Game Land No. 268, Tioga County

Commentary: Endless Mountain Energy requests the Commission offer its oil and gas ownership under a portion of State Game Land No. 268. The tract, containing a total of 1,930 +/- acres, is located in Morris Township, Tioga County (Exhibit OGM 3).

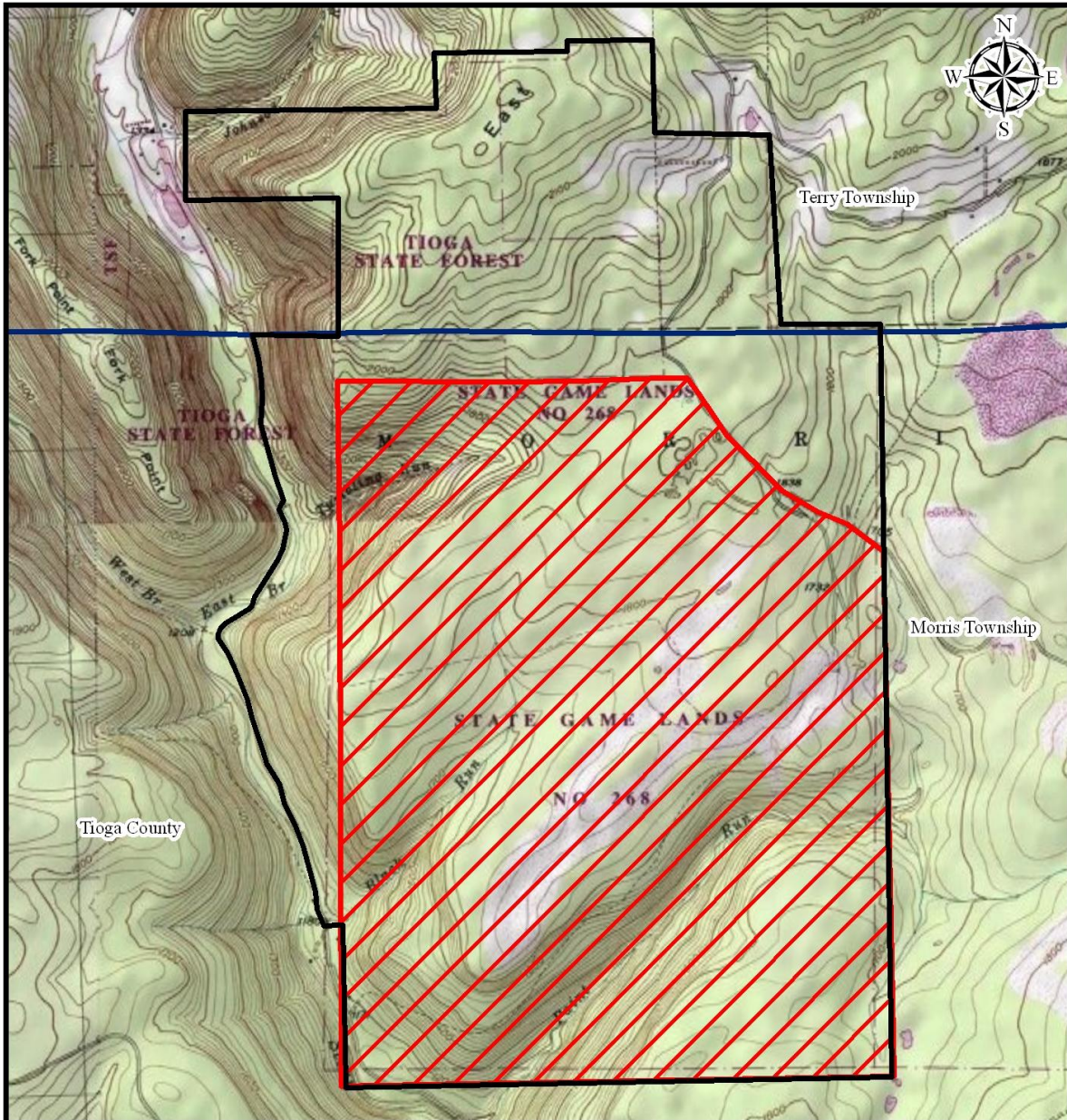
In exchange for an oil/gas agreement, Endless Mountain Energy will cause to convey to the Commission a 584.78 acre tract of land adjacent to State Game Land No. 62 known as the Kane Tract in Hamlin Township, McKean County (Exhibit OGM 4). The Kane Tract is valued at \$700 per acre. The reservations on the property are a 10 year timber reservation and an oil and gas reservation. This tract has undergone shallow, vertical drilling under an existing oil/gas lease. The 10 year timber reservation was developed between the former property owner and the Commission's staff to better benefit the Commission's wildlife goals.




The terms of the agreement are a paid up, 5 year, oil/gas agreement, a \$3,500 per acre bonus payment, a \$15,000 well location fee, \$25 per acre rental, and a 20% royalty. Of the total bonus payment, \$409,346 will be credited towards the conveyance to the Commission of the Kane Tract. The remainder of the bonus payment, \$6,345,654, will be deposited into the Game Fund or an interest bearing escrow account and to be used for the future purchase of wildlife habitats and lands acceptable to the Commission. All royalties will be directly deposited into the Game Fund.

Oil and gas development will be regulated by the Commonwealth's oil/gas regulations and the Commission's standard Oil/Gas Production Agreement and a \$25,000 performance bond. The Oil/Gas Production Agreement will include the Commission's standard wildlife and protection measures and further limits well development to a total of three well pads and related surface infrastructure.

Recommendation: The Executive Director and staff recommend this Oil/Gas Production Agreement be approved and that the Commission authorize the Bureau of Wildlife Habitat Management to proceed with the agreement as listed above.

Action:



-  Tract 268A-11 (1,930 +/- Acres)
-  Game Land Boundary
-  Township Boundary

Notes:

1. Northern border is approximately 800 feet south of the Delmar-Morris Township boundary.
2. Rattler Road is the northeast boundary.

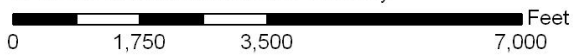
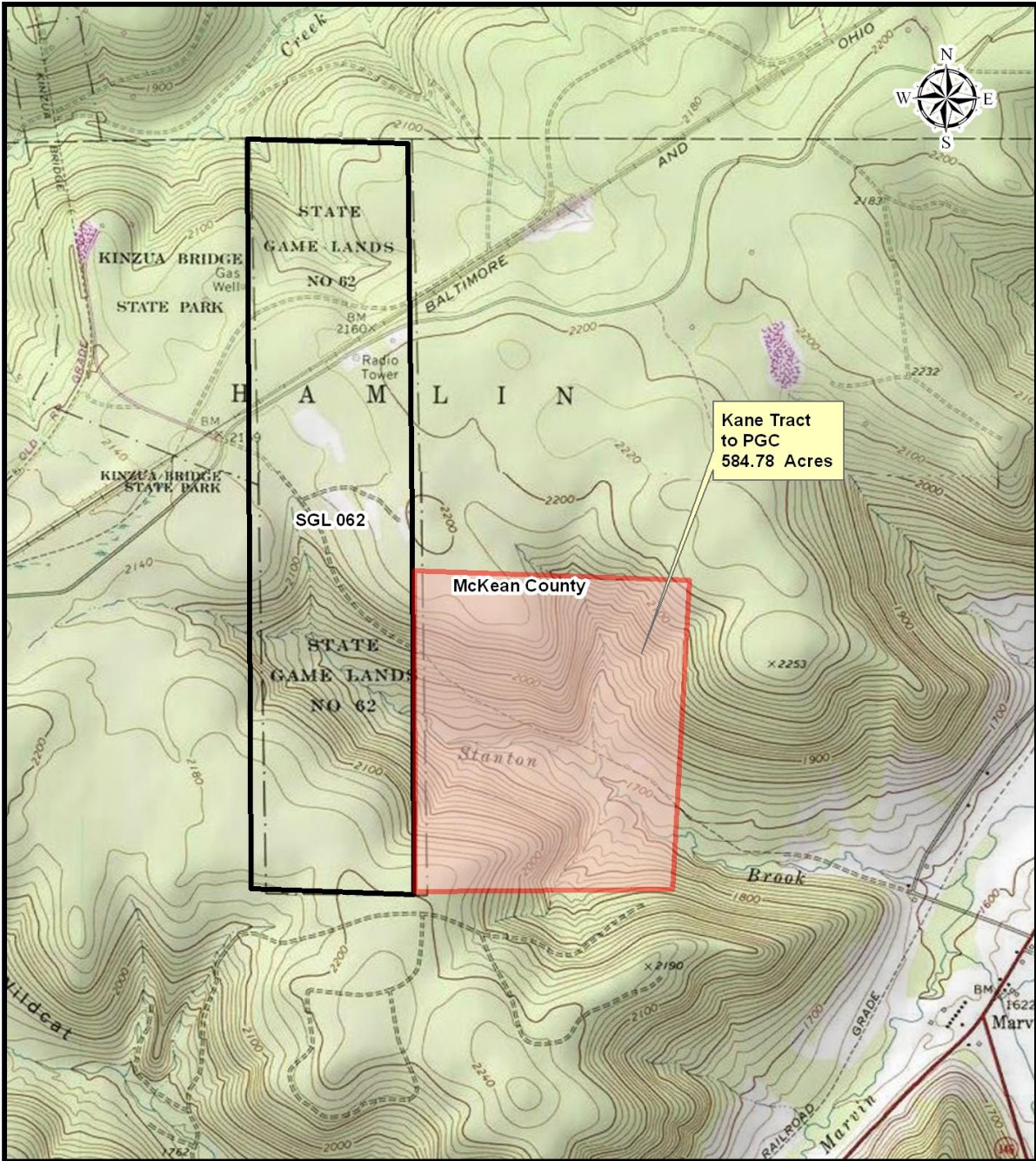


Exhibit OGM 3
 PENNSYLVANIA GAME COMMISSION
State Game Lands No. 268
Endless Mountain Energy
Restricted Surface Use
Oil/Gas Production Area Map
Tract 268A-11
 Morris Township
 Tioga County
 Northcentral Region



- Kane Tract
- Gameland Boundary

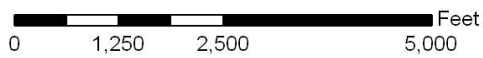


Exhibit OGM 4
Land Exchange to
Pennsylvania Game Commission
Kane Tract
584.78 Acres
Hamlin Township, McKean County

Other New Business

The following Commission Meeting dates were approved for 2011 and January 2012. Does the Commission wish to proceed with these dates and locations?

June 27-28, 2011 (Harrisburg)

October 3-4, 2011 (Harrisburg)

January 29, 30 and 31, 2012 (Harrisburg)

Executive Session, if necessary, will be held immediately following the close of the Commission Meeting.

Adjournment