



# Deer Head Collection Containers and High-Risk Parts Dumpsters

Updated October 13, 2023

**Head collection bins will be placed at these locations a week or two before the beginning of the season.**

How do I get my deer tested for CWD?

If your deer was harvested in a Disease Management Area (DMA), free testing is available. Deposit the head of your deer into any CWD Head Collection Container. The harvest tag must be filled out completely, legible, and physically attached to the deer's ear. The head must be placed in a plastic garbage bag and sealed before being placed in the collection bin. You will be notified of sample submission. You may remove and keep antlers as skulls and antlers will not be returned.

What are high-risk carcass parts and what are the regulations on moving them?

High-risk carcass parts include: head (including brain, tonsils, eyes, and lymph nodes); spinal cord/backbone (vertebra); spleen; skull plate with attached antlers, if visible brain or spinal cord material is present; cape, if visible brain or spinal cord material is present; upper canine teeth, if root structure or other soft material is present; any object or article containing visible brain or spinal cord material; and brain-tanned hide.

It is illegal to export any high-risk cervid parts or materials from any DMA or designated Established Area within the Commonwealth unless going directly to a Game Commission approved cooperating processor or taxidermist. It is also illegal to import high-risk parts from any state or province outside of Pennsylvania unless going directly to a Game Commission approved cooperator. A list of approved cooperators can be found at [pgc.pa.gov/CWD](http://pgc.pa.gov/CWD).

## Head Collection and High-Risk Disposal Containers in DMA 2:

SERVICE	COUNTY	INFORMATION
1) Head Collection	Adams	MICHAUX STATE FOREST, 950 Newman Rd., Ortanna, PA 17353 - From the Intersection of US 30 and Old Route 30 turn onto Newman Road. Follow Newman Road south 1.7 miles to bin on right.
2) Head Collection	Bedford	PA FISH & BOAT COMMISSION, REYNOLDSDALE FISH CULTURE STATION, 2921 Reynoldsdale Rd, New Paris, PA 15554 - From Pleasantville, Take SR 56 East 2.3 miles; turn left on SR 4032, Reynoldsdale Road, for 0.5 miles to driveway on left.
3) Head Collection	Bedford	SGL 97 SR 2015, BLACK VALLEY ROAD PARKING AREA, Black Valley Rd., Everett, PA 25537 - From Everett, Take SR 2015, Black Valley Road, 0.6 miles south to SGL 97 parking area on right.
4) Head Collection	Bedford	SGL 49 BIG CREEK ROAD PARKING AREA, Big Creek Rd, Clearville, PA 15535 - From the intersection with SR 26 near Inglesmith, proceed North on SR 2007 (Big Creek Road) 5.5 Miles to SGL parking area on left.
5) Head Collection & Parts Disposal	Bedford	BEDFORD COUNTY CREW HEADQUARTERS, 372 Replogle School Rd., New Enterprise, PA 16664 - From SR 869 take Replogle School Road to Food and Cover Headquarters.
6) Head Collection & Parts Disposal	Bedford	SGL 97 SR 326 PARKING AREA, 899 Main Rd., Bedford, PA 15522 - From Chaneyville take SR 326 West 3.0 Miles. Dumpster is in parking area on left.
7) Head Collection	Bedford	SGL 48 MILLIGANS COVE ROAD PARKING AREA, 2020 Milligans Cove Rd., Buffalo Mills, PA 15534 - From SR 96 take Cove Road to Milligans Cove Road to SGL parking lot on right.

<b>SERVICE</b>	<b>COUNTY</b>	<b>INFORMATION</b>
8) Head Collection	Blair	SGL 41 SPROUL MT ROAD PARKING AREA, 695 Sproul Mountain Rd, Roaring Spring, PA 16673 - From I-99, take Exit 15, Sproul Mountain Road, East 1.2 miles to SGL parking lot on left.
9) Head Collection	Blair	SGL 073, 131 Tollgate Lane, Martinsburg, PA 16662– From Martinsburg, PA head east on PA-164 for 4 miles then turn left on Tollgate Rd. Bin is located in parking area on the left.
10) Head Collection	Blair	BALD EAGLE SPORTSMEN’S ASSOCIATION, 289 Bald Eagle Sportsman Rd., Tyrone, PA 16686– From Bald Eagle, PA, take Route 350 north about 1 mile, turn right on Bald Eagle Sportsmen’s Club Road. Follow road across stream then bear right, Club is at end of the lane.
11) Head Collection	Blair	SGL 198 VALLEY FORGE ROAD, 372 Valley Forge Rd., Duncansville, PA 16635 - From Old Rte 22, take SR 3009 (Valley Forge Road) south 0.7 miles to SGL parking area on right.
12) Head Collection	Blair	SGL 198 HEALY ROAD PARKING AREA, 292 Healy Rd., Duncansville, PA 16635 - From Old Rt. 22 take Healy Road to SGL parking lot on left.
13) Head Collection & Parts Disposal	Blair	SGL 147 SELDOM SEEN ROAD PARKING AREA, 128 Seldom Seen Rd., Martinsburg, PA 16662 - From SR 164 take Seldom Seen Road to bin and dumpster on right.
14) Head Collection	Cambria	GALLITZIN STATE FOREST, Windber, PA 15963 - 0.25 miles north of Krayn on Weigh Station Rd.
15) Head Collection	Cambria	SGL 108 SHOOTING RANGE, 198 Eugene Rd., Dysart, PA 16636 - From SR 53 near Fallentimber, take SR 1026 (Marina Road) 0.9 Miles to SGL Access Road on left. Proceed past Shooting Range to bin.
16) Head Collection	Cambria	SGL 26 SR 869 PARKING AREA, 2193 Shawnee Rd., Sidman, PA 15955 - From Pavia, take SR 869 West. SGL parking lot is on right at top of mountain.
17) Head Collection	Cambria	SGL 79, PA-271 (Station Road), Nanty-Glo, PA 15943 – From Nanty-Glo, PA take PA-271 north for 1.2 miles, bin will be on right
18) Head Collection	Centre	PENN NURSERY, 1493 Crowfield Rd, Spring Mills, PA 16875—From Rt 322, continue west on Crowfield Rd 0.4 mile to pull-off on left.
19) Head Collection	Centre	SGL 33 PUBLIC ACCESS PARKING LOT, along US Route 322 approximately 4.3 miles south of Rt 504 intersection at Philipsburg, 0.25 mi south of PennDOT maintenance lot.
20) Head Collection	Centre	SGL 176 PARKING AREA, south end of Scotia Range Rd, near intersection with W. Gatesburg Rd, 1.5miles northwest from Tadpole Rd
21) Head Collection	Centre	SGL 176, north end of Scotia Range Rd, from I-99 head south 0.3 miles on Grays Woods Blvd, then left onto Scotia Rd for 0.4 miles, then left on to Scotia Range Rd for 0.1 miles
22) Head Collection	Cumberland	SGL 230 ENOLA ROAD PARKING AREA, 350 Enola Rd., Carlisle, PA 17013– From Schlusser, PA, take PA-34 N (Spring Rd.) for 1.9 mi, then turn left on PA-944 W (Enola Rd.). Continue 0.7 mi, bin will be on left.
23) Head Collection	Cumberland	SGL 169 PARK HILL ROAD PARKING AREA, Newville, PA 17241 - From the intersection of SR 641 (Greenspring Rd) and SR 4007 (Mountain Rd), follow SR 4007 1.5 mi to Park Hill Rd. Turn right onto Park Hill Rd and proceed 0.6 mi to State Game Lands parking area on left.
24) Head Collection	Cumberland	MICHAUX STATE FOREST FERN RIDGE, 1370 Pine Grove Rd., Gardners, PA 17324 - From I-81 take Exit 37, head South 9.2 miles on PA Route 233 (Pine Grove Road). Turn right on Old Orchard Road to bin on left.
25) Head Collection	Dauphin	SGL 290, east of Route 22 “behind” Red Rabbit near managed dove field parking area.
26) Head Collection	Franklin	CHAMBERSBURG WASTEWATER PLANT, Dump Rd., Chambersburg, PA 17201 - From W. South St. turn left onto Hollywell Ave. Proceed 0.3 mi, turn right onto Dump Rd. Take first left, bin will be 500 ft down the road on the left.

<b>SERVICE</b>	<b>COUNTY</b>	<b>INFORMATION</b>
27) Head Collection & Parts Disposal	Franklin	SGL 124 LITTLE COVE ROAD PARKING AREA, 3703 Little Cove Road, Mercersburg, PA 17236 - From Mercersburg, follow SR 16, Buchanan Trail, West 4.5 Miles to SR 456, Little Cove Road. Follow Little Cove Road South 0.1 7 miles to dumpster and bin on right.
28) Head Collection	Fulton	SGL 53 JAMIE ROAD PARKING AREA, 382 Jamie Rd., McConnellsburg, PA 17233 - From McConnellsburg, follow US 30 west 4.2 miles. Turn left on T482 Jamie Road and proceed 0.3 miles to SGL parking area.
29) Head Collection & Parts Disposal	Fulton	SGL 128, 941 Deneens Gap Rd, Warfordsburg, PA 17267— From I-70, take Exit 163; proceed east on Deneens Gap Road for 0.4 miles, then turn left on Moss Road. SGL parking lot is 0.4 miles on left.
30) Head Collection & Parts Disposal	Fulton	DCNR BUCHANAN STATE FOREST on SR 915, 1373 North Valley Rd., Wells Tannery, PA 17228
31) Head Collection	Huntingdon	PSU STONE VALLEY FOREST HEADQUARTERS PARKING AREA, 4924 Headquarters Ln., Huntingdon, PA 16652— From Huntingdon, PA, take PA-26 N for 11.1 mi then turn left onto Wesley Chapel Rd and continue 2.7 mi. Slight right onto PA-305 E and continue 0.6 mi. Bin will be on right.
32) Head Collection	Huntingdon	PSU STONE VALLEY FOREST MASSEYBURG PARKING AREA, 3996 Charter Oak Rd., Petersburg, PA 16669— From Petersburg, PA, take PA-305 E for 6.6 mi then continue straight on Charter Oak Rd. for another 2.8 mi. Turn left onto gravel road (across from Stone Valley Recreation Area West Entrance).
33) Head Collection	Huntingdon	SGL 112 THOUSAND STEPS PARKING AREA, 14559 William Penn Hwy., Mount Union, PA 17066
34) Head Collection	Huntingdon	SGL 322 PETERSBURG PIKE PARKING AREA, Petersburg Pike, Petersburg, PA 16669-From Cold Springs Rd. in Huntingdon, PA, proceed 1.2 mi then turn left onto Petersburg Pike Rd (SR 4007). Continue 0.9 mi and bin will be on left.
35) Head Collection	Huntingdon	SGL 118 DINER 22 PARKING AREA, 5094 William Penn Hwy., Alexandria, PA 16611
36) Head Collection & Parts Disposal	Huntingdon	SGL 121 JOLLER PARKING AREA, 9216 Old Plank Rd., Robertsdale, PA 16674
37) Head Collection	Huntingdon	SOUTH CENTRAL REGIONAL OFFICE, 8627 William Penn Hwy, Huntingdon, PA 16652
38) Head Collection	Juniata	DELAWARE TOWNSHIP MUNICIPAL BUILDING, 814 Quarry Rd., McAlisterville, PA 17049
39) Head Collection	Juniata	RICHFIELD FIRE COMPANY, 38156 PA 35, Richfield, PA 17086
40) Head Collection	Mifflin	SGL 107 PAINTERSVILLE PARKING AREA, 3636 Back Maitland Rd., Lewistown, PA 17044
41) Head Collection	Mifflin	SGL 113 WAKEFIELD RD PARKING AREA, Wakefield Rd., McVeytown, PA 17051 From McVeytown, PA, take US-22 E/US-522 N for 2.7 mi, turn left onto Wakefield Rd and continue for 0.8 mi, bin will be on right.
42) Head Collection	Mifflin	BELLEVILLE FIRE COMPANY, 4231 E. Main St., Belleville, PA 17004
43) Head Collection	Perry	DCNR TUSCARORA STATE FOREST BIG SPRING PARK, 7902 Big Spring Rd., New Germantown, PA 17071
44) Head Collection	Perry	DCNR TUSCARORA STATE FOREST HWY 233, 1471 Sheaffers Valley Rd., Landisburg, PA 17040
45) Head Collection	Perry	SAVILLE TOWNSHIP BUILDING, 3954 Veterans Way, Elliotsburg, PA 17024
46) Head Collection	Perry	SGL 256 HWY 274 PARKING AREA, 1660 PA-274, (New Bloomfield Rd.), New Bloomfield, PA 17068— From Duncannon, PA, take PA-274 west for 6.1 mi, bin will be on right.
47) Head Collection	Snyder	DCNR BALD EAGLE STATE FOREST HWY 235 TRAILHEAD, 17703 PA 235, Beaver Springs, PA 17812— From McAlisterville, PA, take PA-235 N for 4.9 mi, bin will be on right.
48) Head Collection	Snyder	SGL 194 GAMELAND ROAD PARKING AREA, 15 Gameland Rd., Mount Pleasant Mills, PA 17853

<b>SERVICE</b>	<b>COUNTY</b>	<b>INFORMATION</b>
49) Head Collection	Snyder	MIDDLEBURG BORO MAINTENANCE SHED, 193 Edmond Ave., Middleburg, PA 17842
50) Head Collection	Snyder	SGL 188, 5798 CREEK ROAD, BEAVERTOWN, PA 17813— From Beavertown, PA take Pine Swamp Rd. north 1.5 mi then turn right onto Creek Rd and continue 0.3 mile, bin will be on left.
51) Head Collection	Snyder	SGL 212—From intersection of Inch Hill Road and Dam Hill Road, follow Dam Hill Road east for 0.73 mile. Bin in parking lot on left.
52) Head Collection	Somerset	SGL 42 PARKING AREA OFF HWY 271, Menoher Hwy., Johnstown, PA 15905— From Ligonier, PA, take PA-711 N (N Market St.) for 2.5 mi then a slight right onto PA-271 N. Continue 7.9 mi, bin will be on left.
53) Head Collection	Somerset	SGL 82 SR 160 PARKING AREA, 3974 Cumberland Hwy., Meyersdal, PA 15552— From Berlin, follow SR 160 south 10 miles to SGL parking lot on the left.
54) Head Collection	Somerset	SGL 228 LAMBERT MOUNTAIN ROAD PARKING AREA, 2737 Lambert Mountain Rd., Cairnbrook, PA 15924 - From Central City, take Main St. 0.4 mi then turn left onto Shaffer Mountain Rd. Continue 0.8 mi then bear right onto Lambert Mountain Road. Continue 1.6 mi to SGL parking lot on right.
55) Head Collection	Somerset	SGL 050, 744 Berlin Plank Rd., Somerset, PA 15501— From Somerset, PA, follow E Main St. then slight right on Berlin Plank Rd. Continue 1.4 mi to SGL parking lot on right.
56) Head Collection	Somerset	PennDOT MAINTENANCE AREA, Glades Pike (Rt. 31), Roxbury, PA—From Berlin, PA take PA-160 N for 2.8 miles. Turn right onto PA-31 E and continue 1.3 miles. Bin will be in maintenance area on left.
57) Head Collection	Union	DCNR BALD EAGLE DISTRICT OFFICE 18865 Old Turnpike Rd., Millmont, PA 17845—From intersection of Rt 235 and 45 west of Hartleton, continue west of Rt 45 0.1 mile to DCNR District Office on left.
58) Head Collection	Westmoreland	SOUTHWEST REGIONAL OFFICE, 4820 Route 711, Bolivar, PA 15923

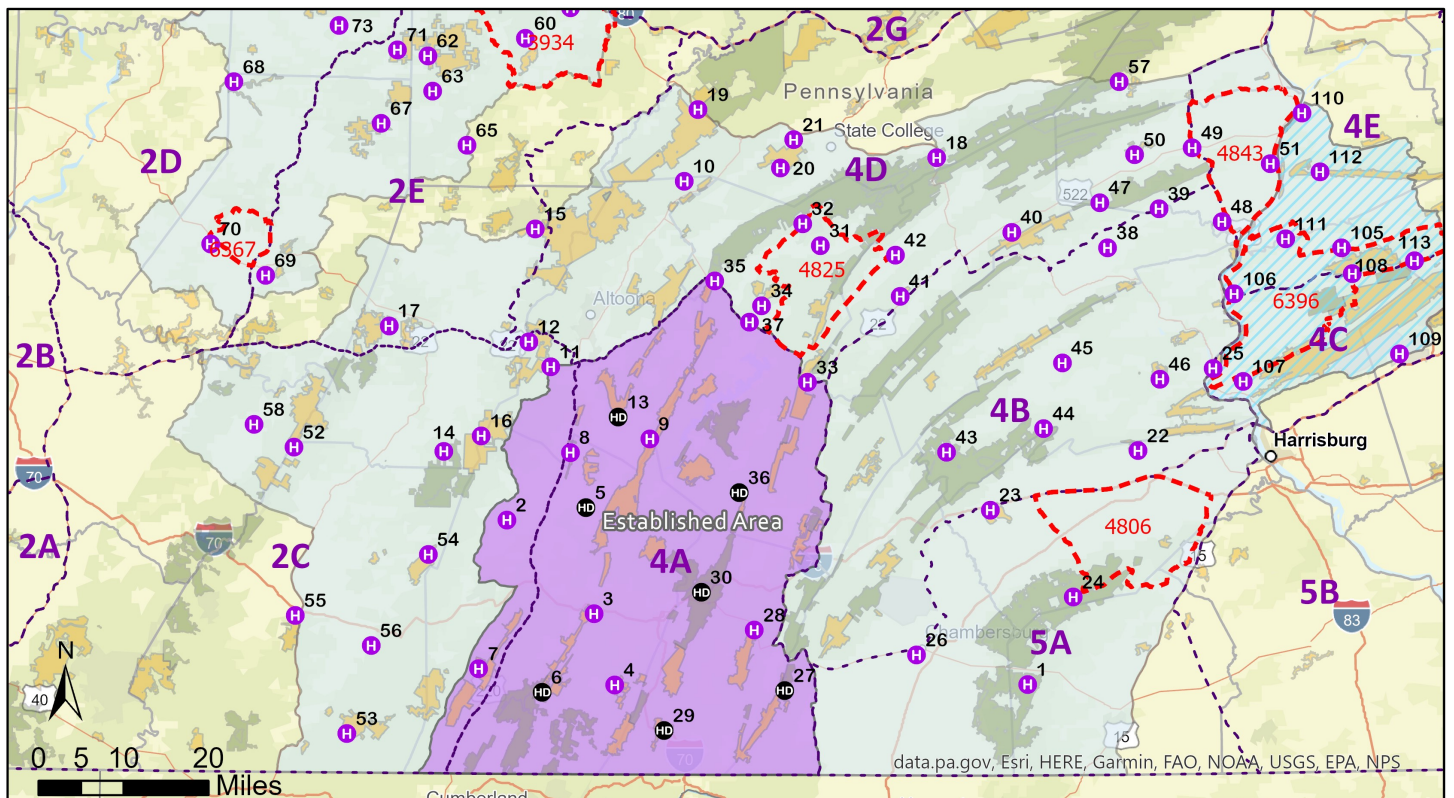
**DMA 2 MAP ON NEXT PAGE**

PENNSYLVANIA GAME COMMISSION

# Disease Management Area 2 and Established Area

## Public Use Head Bin and High-Risk Parts Dumpster Locations

- H Head Collection Bin
- HD Head Collection Bin & Parts Dumpster
- 2023-24 CWD DMAP Units
- Established Area (EA)
- Disease Management Area (DMA)
- DMA 8
- Wildlife Management Unit (WMU)
- State Game Lands
- State Forest
- County



### **Head Collection Containers in DMA 3:**

<b>SERVICE</b>	<b>COUNTY</b>	<b>INFORMATION</b>
59) Head Collection	Clearfield	SANDY TOWNSHIP STOCKPILE, 4594 Rockton Road, Dubois, PA 15801 - From US 322 at Rockton, take SR 4014 (Dubois Rockton Road) 4.5 miles to Sandy Township Stockpile on right.
60) Head Collection	Clearfield	PIKE TOWNSHIP MUNICIPAL BUILDING, 4257 Curwensville-Grampian Hwy., Curwensville, PA 16833– From Curwensville, go west on 879 for 1.5 miles, turn right into municipal building lot, continue to back of lot at Bridgeport Rd.
61) Head Collection	Clearfield	CLEARFIELD COUNTY FAIRGROUNDS, 5615 Park St., Clearfield, PA 16830– From intersection of 879 and 322, continue 2 miles west on 322 through Clearfield, left on Weaver St., right on Stadium Dr., bin is at west end of Fairground Bldg.
62) Head Collection	Clearfield	SGL 87, 1199 McGees Mills Rd., Mahaffey, PA 15757– From Troutville, take SR 3009 south 7.4 miles. Turn right on SGL access road for 200 feet.
63) Head Collection	Clearfield	BELL TOWNSHIP MUNICIPAL BUILDING, 6018 Colonel Drake Hwy., Mahaffey, PA 15757—From the intersection of SR 36/US 219 and SR 3009 Newtonburg Rd., proceed west 0.2 miles to Bell Township Municipal Building on right.
64) Head Collection	Clearfield	BRADY TOWNSHIP BUILDING, 3058 Shamokin Trail, Luthersburg, PA 15848 - From US 219/US 322, take SR 410 southwest 0.2 miles to bin on left.
65) Head Collection	Clearfield	HUGILL SANITATION, 2811 Five Points Road, LaJose, PA 15753 - From State Highway 36 approximately 3.3 miles north of Westover, turn left onto SR 3014, Five Points Road. Follow Five Points Road west 0.3 miles to bin on left.
66) Head Collection	Elk	SGL 44 HEADQUARTERS BUILDING, Game Commission Road (Township Road 318), 0.7 mile south of intersection with State Route 949, 1.4 miles east of Portland Mills.
67) Head Collection	Indiana	SGL 262 BUILDING, 2064 Logan Road, Glen Campbell, PA 15742 - From Glen Campbell, take Glen Campbell Rd. north for 2.5 mi. Turn left onto Smithport Rd. and continue 0.3 mi then turn left onto Logan Rd. Continue 0.5 mi, bin will be on left.
68) Head Collection	Indiana	SGL 427 MAHONING CREEK ACE FLOOD CONTROL, Allen Flat Rd., Dayton, PA 16222– From Dayton, PA, take E Main St. 0.4 mile then turn left onto PA-839 N for 2.2 miles, turn right onto Allen Flats Rd and continue for 1 mile, bin will be on right.
69) Head Collection	Indiana	SGL 273 PARKING AREA- from Homer City, PA take Lucerne Rd for 2.3 miles, turn right onto PA-954 S and continue for 0.6 miles, turn left and the bin will be in the parking lot on the left.
70) Head Collection	Indiana	PARKWOOD RD - From the city of Indiana, take US-422 W northwest for 3.7 miles, turn left onto Parkwood Rd. Continue for approximately 0.8 miles and bin will be on your left.
71) Head Collection	Jefferson	SGL 195 PARKING AREA, 1707 Filtering Plant Rd., Punxsutawney, PA 15767 - From Big Run take T960 (Filtering Plant Road) south 2.3 miles to SGL parking area on right.
72) Head Collection	Jefferson	CLEAR CREEK STATE PARK, Sigel, PA 15860 - From the intersection of SR 36 and SR 949, follow SR 949 northeast 4 miles to Clear Creek State Park. Continue 1 mile past Clear Creek Park Rd. Bin will be on right.
73) Head Collection	Jefferson	MCCALMONT TOWNSHIP FIRE HALL, 101 Firehouse Ln, Anita, PA 15711 - From SR 310 (Main Street), in Anita, go east on Spruce Street for approximately 300 feet, then turn right onto Firehouse Lane to Head Collection Bin.
74) Head Collection	Jefferson	SGL 31 PARKING AREA, 4152 Knox Dale Rd., Reynoldsville, PA 15825 - From Knox Dale follow SR 2023 (Knox Dale Road) south 3.7 Miles. Turn right onto SGL Access road for 300 feet to SGL parking area on left.
75) Head Collection	Jefferson	JEFFERSON COUNTY CONSERVATION DISTRICT, 1514 Rte. 28, Brookville, PA 15825 - From I-80 near Brookville, take Exit 81 for PA 28. Head north for 0.3 mile to Jefferson County Conservation District on right.

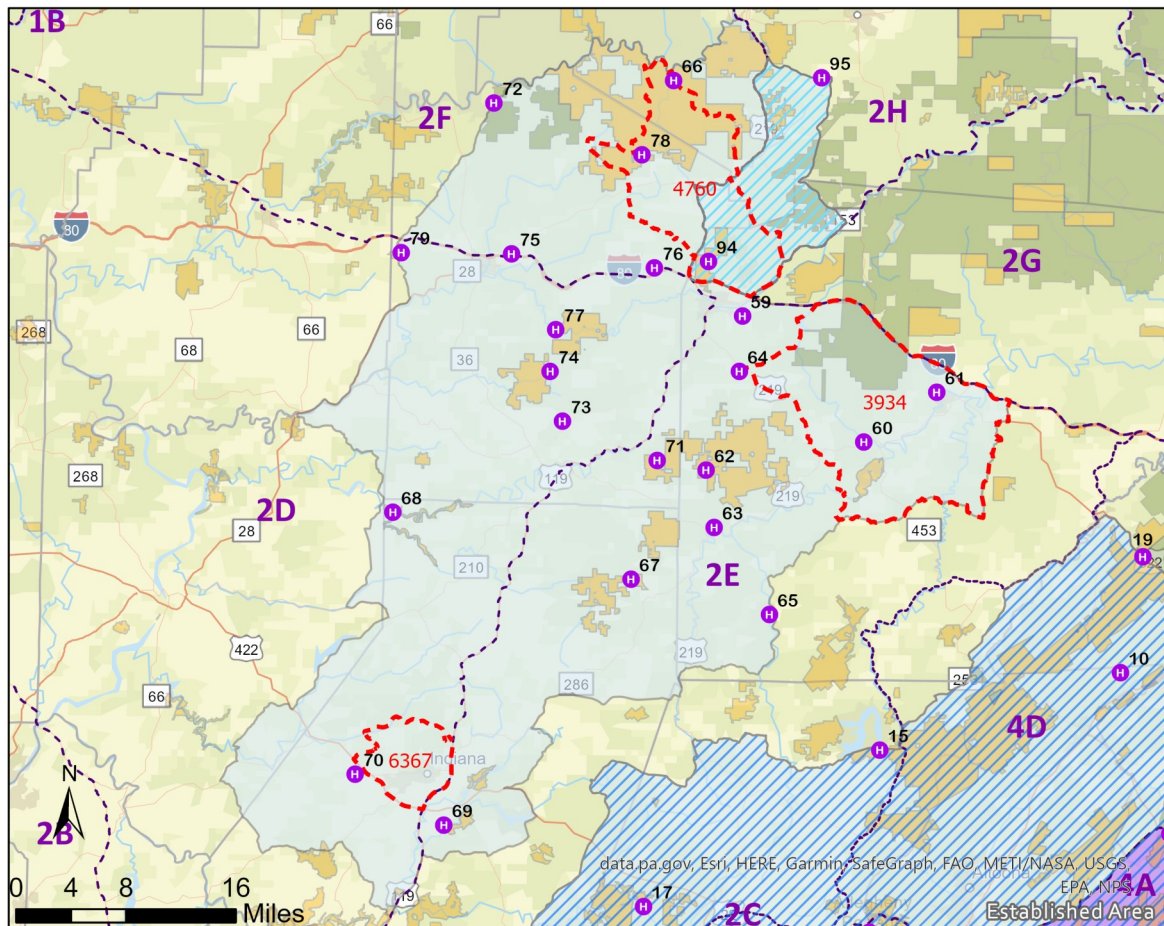
SERVICE	COUNTY	INFORMATION
76) Head Collection	Jefferson	KYLE LAKE PARKING AREA, Kyle Run Rd, Falls Creek, PA 15840 - From Falls Creek, follow Airport Rd. northwest. Cross over I-80 and turn left onto Kyle Run Rd. Continue for 1 mile to bin on left.
77) Head Collection	Jefferson	SGL 244 SANDY LICK CREEK PARKING AREA - Take Exit 86 off I-80. Go South on SR 1830 (Fuller Rd.) 0.8 mi. to the intersection with US 322. Cross US 322 South on Fuller Rd 2.1 mi. to just before the bridge at Sandy Lick Creek. Turn left on gravel road for 0.4 mile.
78) Head Collection	Jefferson	SGL 54 GAME SCHOOL ROAD PARKING AREA - Game School Rd., Brockway, PA 15824. From the intersection of SR 28 and Game School Road just west of Brockway, follow Game School Rd north then west 3.2 miles to bin on right.
79) Head Collection	Jefferson	SGL 266 PARKING AREA, Route 949, Corsica, PA 15829 - From the intersection of US 322 (Main Street) and SR 949 (Corsica Summerville Rd) in Corsica, follow SR 949 south for 0.5 miles to SGL parking area on right.

PENNSYLVANIA GAME COMMISSION

# Disease Management Area 3

## Public Use Head Bin Locations

- Head Collection Bin
- 2023-24 CWD DMAP Units
- Disease Management Area (DMA)
- DMA 2
- DMA 6
- Wildlife Management Unit (WMU)
- State Game Lands
- State Forest
- County



## Head Collection Containers in DMA 4:

<b>SERVICE</b>	<b>COUNTY</b>	<b>INFORMATION</b>
80) Head Collection	Lancaster	BOWMANSVILLE FIRE COMPANY, 146 W. Maple Grove Rd, Bowmansville, PA 17507, From Bowmansville (intersection of SR-625 and West Maple Grove Rd.) travel west on Maple Grove Rd. 0.2 mile to Fire Company on right.
81) Head Collection	Lancaster	WEST EARL TOWNSHIP BUILDING, 157 W. Metzler Rd, Ephrata, PA 17522– From US-222 take exit for PA-772 towards Brownstown/Rothsville, turn right onto PA-772 W for 0.2 mile, turn right onto PA-272 N for 0.3 mile, turn right onto N Church St. SW and continue 0.1 mile, turn left onto W Metzler Rd. for 0.2 mile to Twp Building on left.
82) Head Collection	Lancaster	MUDDY RUN PA-372 PARKING AREA, Holtwood Rd, Holtwood, PA 17532– 400 ft north of intersection of SR 0372 (Holtwood Road), Old Pinnacle Rd. (T-434), and River Rd. (SR 3006)
83) Head Collection	Lancaster	SGL 136 PUSEYVILLE RD PARKING AREA, Puseyville Rd, Kirkwood, PA 17536– at intersection of Puseyville Road (SR 2010) and Street Road (T-353)
84) Head Collection	Lancaster	BLUE ROCK FIRE RESCUE HOUSE 903– 3079 River Rd, Conestoga, PA 17516, 0.3 mile north of intersection with Indian Marker Road (T-579) and 0.27 mile south of intersection with Breneman Road (T-581)
85) Head Collection	Lancaster	SALISBURY TOWNSHIP OFFICE– 5581 Old Philadelphia Pike, Gap, PA 17527, 0.1 mile east of the intersection with Meetinghouse Road (T-944) and White Horse Road (SR 0897).
86) Head Collection	Lebanon	MIDDLE CREEK WILDLIFE MANAGEMENT AREA, SGL 46, Hopeland Road, Newmanstown, PA 17073– From Kleinfeltersville, PA take PA-897 to Hopeland Rd. and continue 1 mi to bin on right.



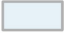

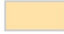


**DMA 4 MAP ON NEXT PAGE**

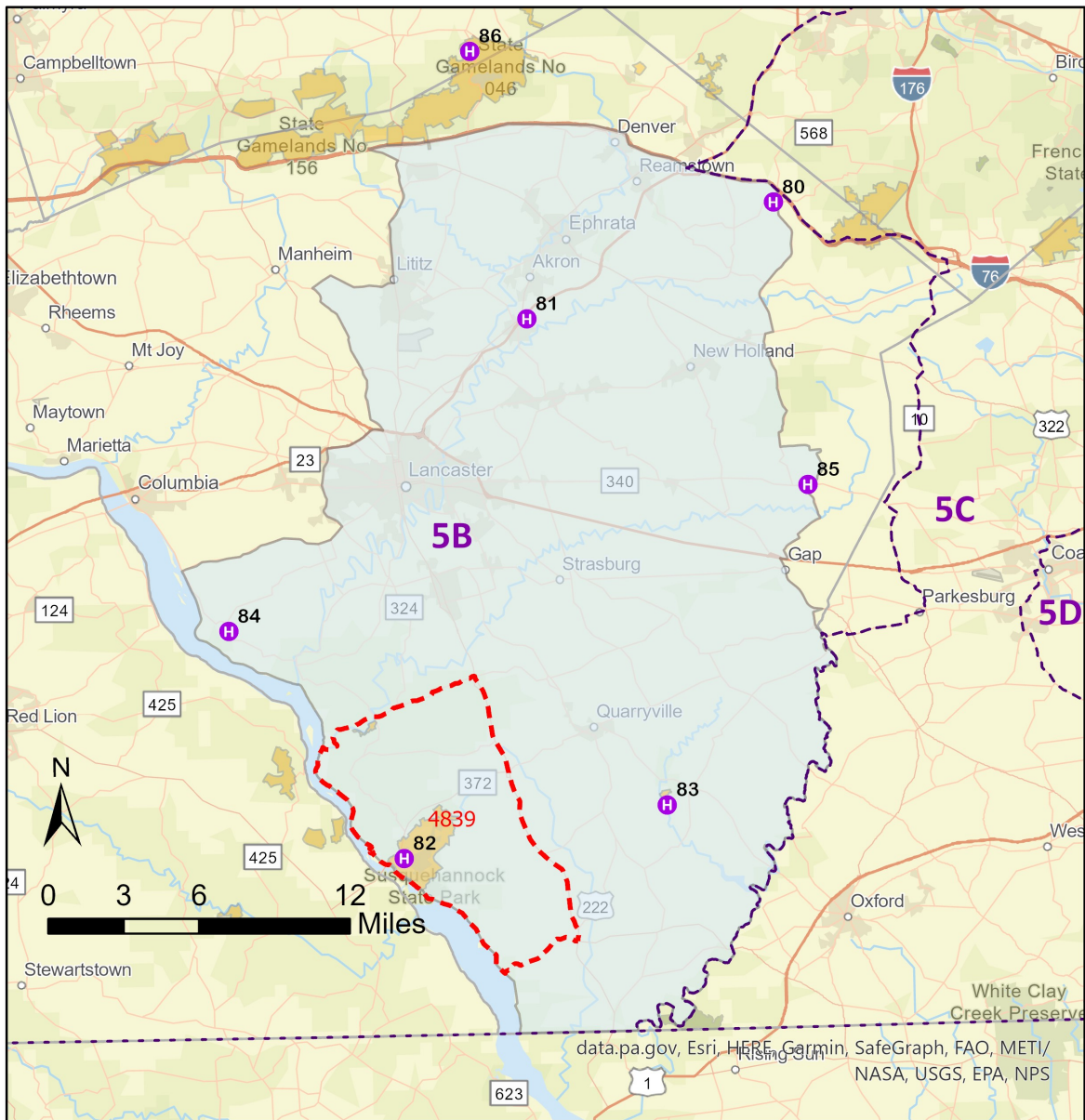


# PENNSYLVANIA GAME COMMISSION

## Disease Management Area 4

### Public Use Head Bin Locations

-  Head Collection Bin
-  2023-24 CWD DMAP Units
-  Disease Management Area (DMA)
-  Wildlife Management Unit (WMU)
-  State Game Lands
-  State Forest
-  County



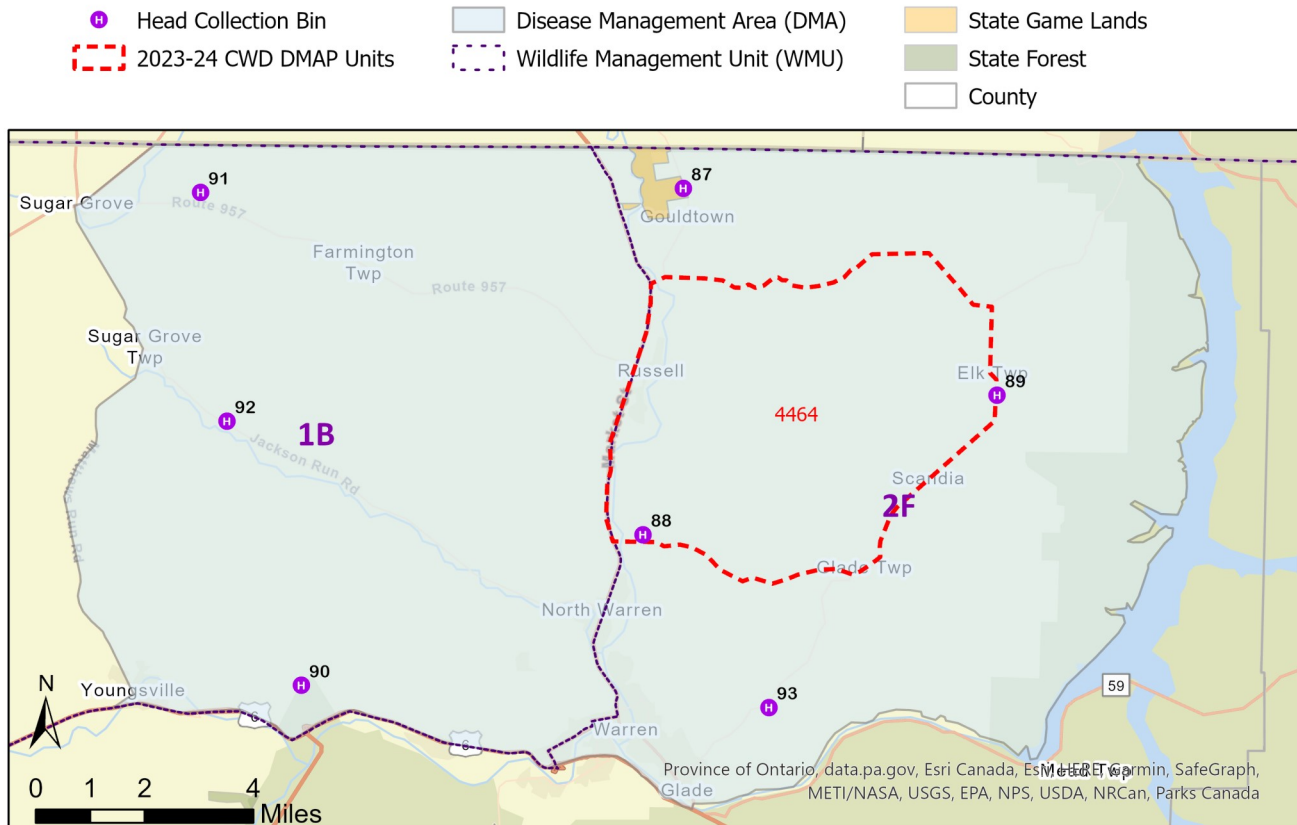
## Head Collection Containers in DMA 5:

SERVICE	COUNTY	INFORMATION
87) Head Collection	Warren	SGL 282 PARKING AREA, along Akeley Road at junction with Howard Road, 1.8 miles north of Akeley, PA.
88) Head Collection	Warren	PennDot MAINTENANCE STOCKPILE, 4100 Conewango Avenue, Warren, PA 16365
89) Head Collection	Warren	ELK TWP. MAINTENANCE GARAGE, 6962 Scandia Rd., Russell, PA 16345, From Scandia, follow Scandia Rd/Warren-Olean Rd north for 2 miles to Maintenance Garage on right.
90) Head Collection	Warren	ALLEGHENY NATIONAL FOREST, Keller Road, from US-6/US-62 S, take US-62 S exit toward Tidioute/Tionesta, turn right onto Irvine Run Rd. for 0.2 mile, keep right to continue on Keller Rd. for 0.7 mile, bin will be on left.
91) Head Collection	Warren	SUGAR GROVE TOWNSHIP BUILDING, 195 Creek Rd., Sugar Grove, PA 16350, From Sugar Grove, take PA-957 E for 2.1 mile. Take slight left onto Old State Rd. (T-589), then left onto Creek Rd. Continue 0.2 mile to Township Building.
92) Head Collection	Warren	MORTENSON RECYCLING, 8336 Jackson Run Road, Sugar Grove, PA 16350
93) Head Collection	Warren	COBHAM PARK SELF STORAGE, 2420 Cobham Park Road, Warren, PA 16365

## PENNSYLVANIA GAME COMMISSION

# Disease Management Area 5

### Public Use Head Bin Locations











## Head Collection Containers in DMA 6:

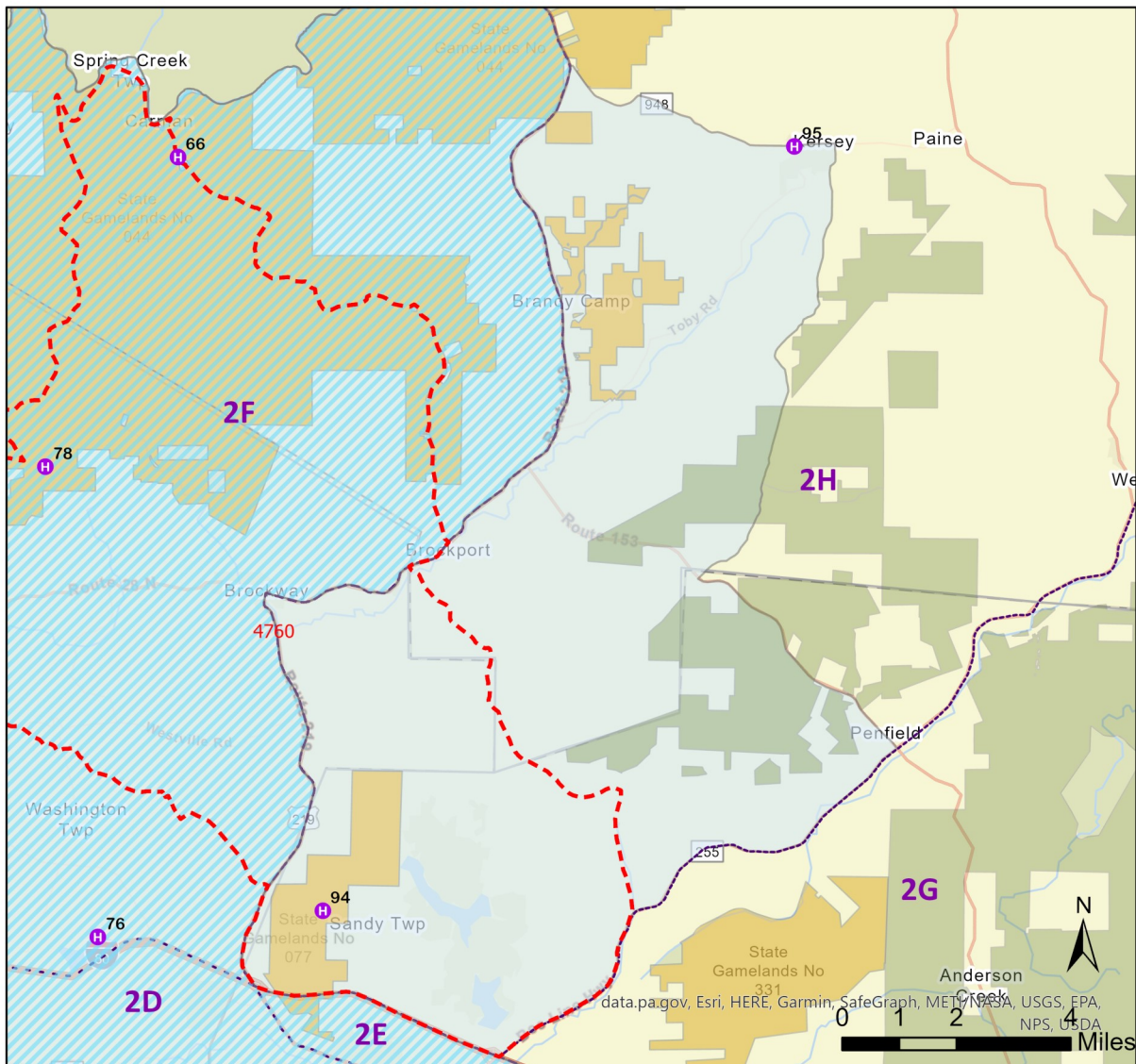
SERVICE	COUNTY	INFORMATION
94) Head Collection	Clearfield	SGL 77 PUBLIC SHOOTING RANGE, on Game Lands Road (Township Road 587), 1.3 miles east of State Route 219.
95) Head Collection	Elk	CORNER MARKET & DELI, 421 Main Street, Kersey, PA 15846.

### PENNSYLVANIA GAME COMMISSION

## Disease Management Area 6

### Public Use Head Bin Locations

-  Head Collection Bin
-  Disease Management Area (DMA)
-  State Game Lands
-  2023-24 CWD DMAP Units
-  DMA 3
-  State Forest
-  Wildlife Management Unit (WMU)
-  County



## Head Collection Containers in DMA 7:


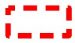


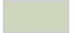


<b>SERVICE</b>	<b>COUNTY</b>	<b>INFORMATION</b>
96) Head Collection	Columbia	SGL 226 PARKING LOT, along Spruce Run Rd, 1.2 miles north of Rt 254, west of Millville.
97) Head Collection	Lycoming	SGL 134 ENTRANCE TO OLD PHEASANT FARM, 1609 Proctor Rd, Williamsport, PA 17701. From intersection of Wallis Run Rd and Hoppestown Rd near Proctor, 0.4 miles south on Proctor Rd.
98) Head Collection	Lycoming	98 Upper Powys Rd, Cogan Station, PA 17728. Located in roadside lot 150 yards east of intersection with Lycoming Creek Rd, 3.2 miles south of Trout Run or 2.5 miles north of Rt 973.
99) Head Collection	Lycoming	ENTRANCE TO LOYALSOCK GAME FARM, 18 Game Farm Rd, Montoursville, PA 17754. 0.1 miles west of Rt 87 on Rt 973 at intersection with Wallis Run Rd.
100) Head Collection	Lycoming	PENN TOWNSHIP BUILDING, 4600 Beaver Lake Rd Hughesville PA. Along Beaver Lake Rd 4.5 miles west from Rt 42, near intersection with Election House Hill Rd.
101) Head Collection	Lycoming	MUNCY CREEK TOWNSHIP BUILDING, 575 Rt 442, Muncy, PA 17756, east of Muncy, along Rt 442, 0.6 miles from Rt 405 intersection.
102) Head Collection	Lycoming	MILL CREEK TOWNSHIP BUILDING, 2064 Woodley Hollow Rd, Montoursville, PA 17745. From Rt 864 between Farragut and Picture Rocks, 1.4 miles south on Woodley Hollow Rd.
103) Head Collection	Lycoming	LOYALSOCK TOWNSHIP BUILDING between Williamsport and Montoursville. 2501 E 3rd St, Williamsport, PA 17701. Use 3rd Street exit, turn onto Country Club Drive at first light, behind building and just beyond gate.
104) Head Collection	Sullivan	Approximately 2.2 miles south of Hillsgrove at the intersection of SR 87 and Ogdonia rd.

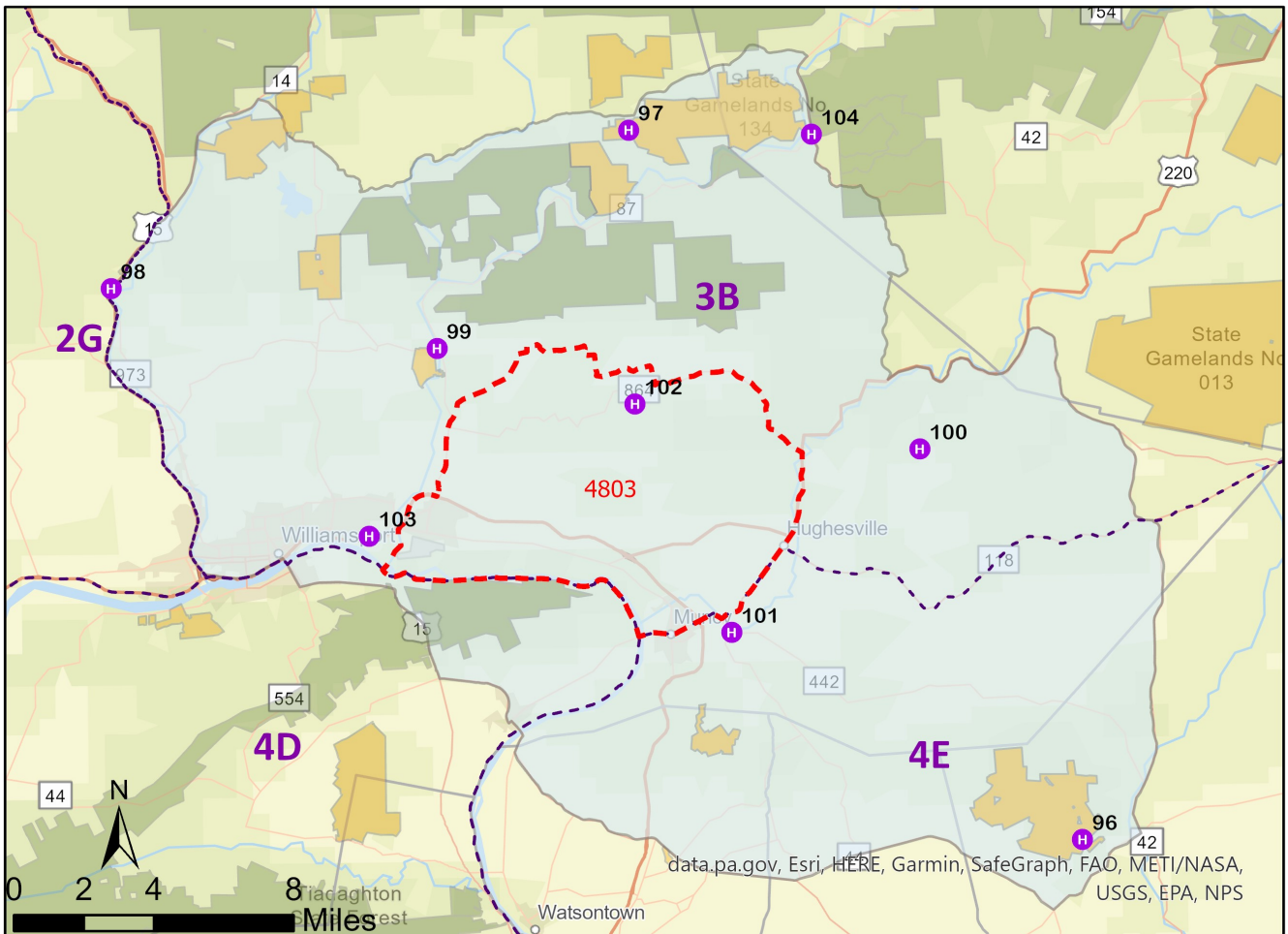
**DMA 7 MAP ON NEXT PAGE**

PENNSYLVANIA GAME COMMISSION

# Disease Management Area 7

## Public Use Head Bin Locations

-  Head Collection Bin
-  2023-24 CWD DMAP Units
-  Wildlife Management Unit (WMU)
-  Disease Management Area (DMA)
-  State Forest
-  State Game Lands
-  County



## **Head Collection Containers in DMA 8:**

<b>SERVICE</b>	<b>COUNTY</b>	<b>INFORMATION</b>
105) Head Collection	Dauphin	GRATZ COMMUNITY CENTER PARKING AREA- 125 N. Center St Lykens PA
106) Head Collection	Dauphin	MILLERSBURG- Corner of Market St. & Pine St., 200 Pine St. Millersburg PA
107) Head Collection	Dauphin	CLARKS VALLEY RD– at the intersection of Peters Mountain Rd and Clarks Valley Rd. The pull off is on Clarks Valley Rd.
108) Head Collection	Dauphin	WISCONISCO FIRE COMPANY NO 1– 387 Arch St, Wisconisco PA
109) Head Collection	Lebanon	FORT INDIANTOWN GAP, intersection of Asher Miner Rd and Clement Ave.
110) Head Collection	North- umberland	PA FISH & BOAT COMMISSION SUNBURY BOAT LAUNCH, SR 147 Sunbury, PA 17081
111) Head Collection	North- umberland	MAHANTANGO CREEK RD- approximately 0.27 mile east of Game Farm Rd. intersection, Dalmatia, PA 17017
112) Head Collection	North- umberland	SGL 084—798 Creek Rd, Dornsife, PA 17823
113) Head Collection	Schuylkill	TOWER CITY BOROUGH HALL, 245 E Colliery Ave., Tower City, Off Rt. 209, across N 3rd St from the borough hall.

**DMA 8 MAP ON NEXT PAGE**

PENNSYLVANIA GAME COMMISSION

# Disease Management Area 8

## Public Use Head Bin Locations

- H Head Collection Bin
- 2023-24 CWD DMAP Units
- Disease Management Area (DMA)
- DMA 2
- Wildlife Management Unit (WMU)
- State Game Lands
- State Forest
- County

